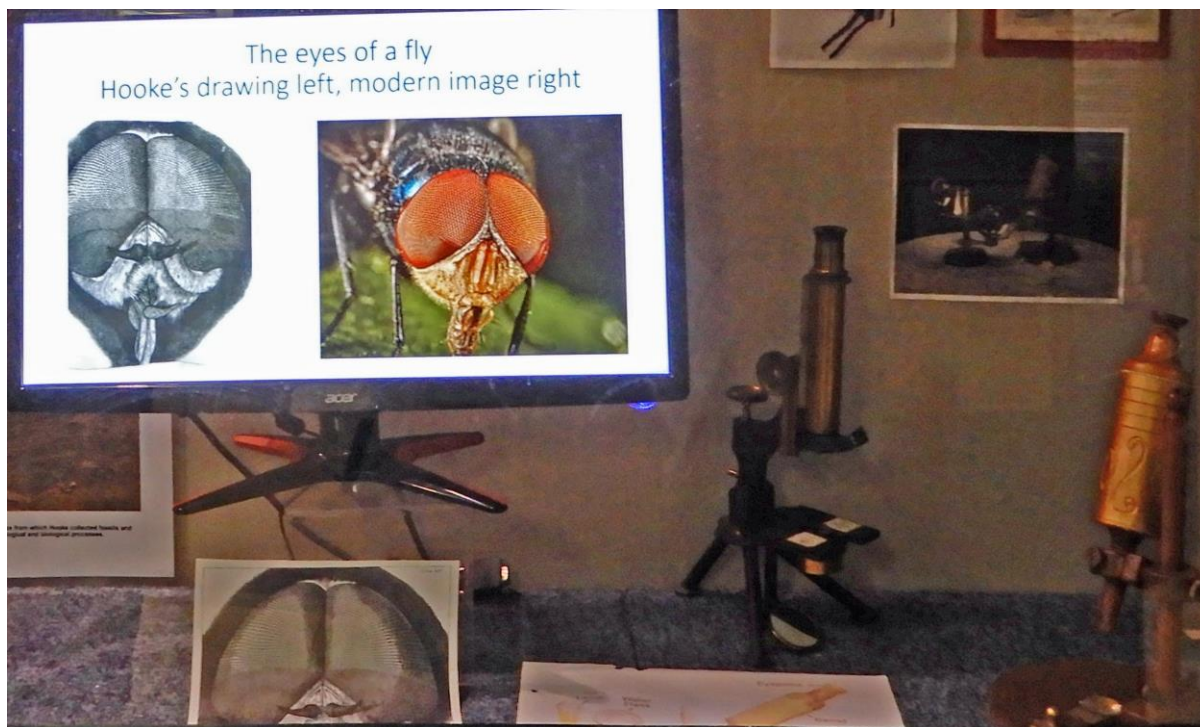


We are pleased to announce that we will be running a trip to The Robert Hooke Museum on the Isle of Wight on **Saturday 10<sup>th</sup> May 2025**



The coach will pick-up at Emsworth bus stop opposite the King's Arms at 08:30 hrs and will travel to the University of Southampton, Highfield Campus, Unilinc Bus Terminal and will pick-up there between 09:45 hrs and 10:00 hrs. It will then proceed to the Red Funnel Ferry Port to board the 11:00 hrs sailing to Cowes this will also be a pick-up point. We will aim to be at the museum by 13:00 hrs for a look around and lecture by a member of the Robert Hooke Society about the life of Robert Hooke FRS and his connection to the Isle of Wight. There will also be a small magic show for younger children instead of the lecture. The museum is located in the planetarium at Fort Victoria, close to Yarmouth. There is a café there and another café about 200 metres along the beach. A packed lunch is recommended although food and drink will be available at the cafes.

#### **Health & Safety**

It is important that all children are under supervision of a responsible adult at all times. The identified hazards of this trip are dangerous tidal currents making the sea there unfit for bathing. There is also an elevated walkway along the fort wall, this presents a risk of a fall from height for small children.

This event is being sponsored by this local section of the Royal Society of Chemistry with all travel costs paid. Only a limited number of seats will be available on the coach and these will be allocated on a first come first served basis so reserve your seat early by booking directly with Roger Kevern at: [roger.kevern@k4safety.com](mailto:roger.kevern@k4safety.com)