

**2nd RSC Symposium on Chemical Biology for Drug Discovery
20th-21st March 2012, AstraZeneca, Macclesfield**

APPLICATION FORM

Please note that a late application fee applies after 11th February 2012.
This form should be completed clearly and returned with your remittance to: Conference Secretariat,
Maggi Churchouse, 3 East Barn, Market Weston Road, Theltham, Diss IP22 1JJ, UK
Fax: +44 (0)1359 221004, e-mail: maggi@maggichurchoosevents.co.uk

Title (Prof, Dr, etc): First Name:

Last (Family) Name:

Job Title:

Organisation:

Address:

Postcode: Telephone (for contact by us):

E-mail (for correspondence):

Special dietary or other needs:

Registration Fees (including conference dinner)

Please tick as appropriate.	Up to 31 December	1 Jan to 10 Feb
<input type="checkbox"/> RSC member*	£200	£220
<input type="checkbox"/> Non-members	£260	£280
<input type="checkbox"/> RSC student member*	£110	£120
<input type="checkbox"/> Non-member student	£130	£150
<input type="checkbox"/> Trade stand (excluding delegate)	£550	£550
		£30

Add late booking fee for registration payments received by the Secretariat from 11 February

I confirm that I **will** / **will not** attend the conference dinner on Tuesday, 20th March

* RSC membership number:

Transport: I plan to use the free transport between: Tue am Tue pm Wed am Wed pm

- ☐ Stockport railway station and venue
- ☐ Manchester Airport Marriott hotel and venue
- ☐ Manchester airport and venue

Transport offered subject to availability

- ☐ I require a car parking space at AstraZeneca

Payment Methods

- Cheque:** I enclose a cheque payable to Maggi Churchouse Events for £
- Bank Transfer:** Payments may be made by BACS - please contact Conference Secretariat for details. All charges must be paid by the sender. Please include the delegate name and invoice number as the reference in the bank instruction and send a copy with the application form.
- Card:** Card payments may be made online at www.maggichurchoosevents.co.uk/bmcs

DATA PROTECTION: The information you supply will be used for the administration of the meeting. A list of participants' names and e-mail addresses will be distributed at the conference. If you DO NOT wish your address to be included, please tick the box - ☐

Additional Information

Venue and Travel

AstraZeneca, Alderley Park, Macclesfield, UK

To reach Alderley Park, take a direct two-hour train journey from London to Macclesfield, followed by a short taxi ride. Alternatively take a flight or train to Manchester International Airport - then travel by taxi to the hotel (5-10 minutes) or by taxi to Alderley Park (20-30 minutes).

We are providing free-of-charge transport between AstraZeneca and three locations: Manchester airport, the Marriott hotel, and Stockport railway station. This transport may should be booked at time of registration.

Accommodation

We have held hotel bedrooms at special rates for this conference at three hotels, and further details may be found on the website. The hotels are the Manchester Airport Marriott, the Radisson Blu, and the Etrop Grange.

Conference Dinner

The conference dinner will be held on Tuesday, 20th March at Players' Restaurant, which is adjacent to the Manchester Airport Marriott Hotel. This dinner is included in the registration fee, and will start at 7.30 pm.

Organising Committee

Paul Brennan	The Structural Genomics Consortium
Frederick Goldberg	AstraZeneca
Tom Heightman (chair)	Astex Pharmaceuticals
Lyn Jones	Pfizer
Jason Micklefield	University of Manchester
Brandon Turunen	GlaxoSmithKline
Simon Ward	University of Sussex

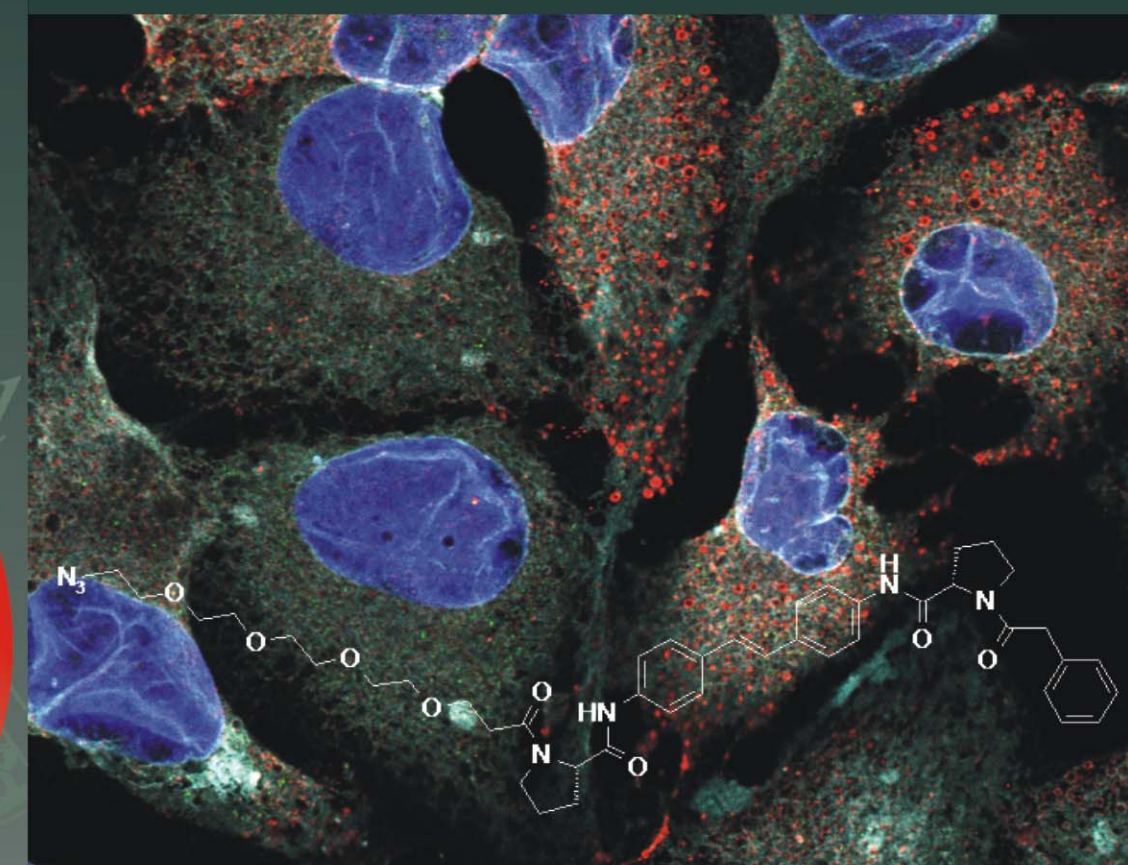
Contact/Sekretariat and to register an interest

Maggi Churchouse, 3 East Barn, Market Weston Road, Theltham, Diss IP22 1JJ

telephone and fax +44 (0)1359 221004, maggi@maggichurchoosevents.co.uk

Website: www.maggichurchoosevents.co.uk/bmcs

Final Announcement and Application Form



**2nd RSC Symposium on
Chemical Biology
for Drug Discovery**

Tuesday-Wednesday, 20th-21st March 2012

AstraZeneca, Alderley Park, Macclesfield, UK



Introduction and Programme

Introduction

This symposium covers progress in the interdisciplinary field of Chemical Biology in enhancing our understanding of the molecular mechanisms of human biology in health and disease.

Topics will include discovery and use of chemical probes, chemical modification of biological molecules, in-cell protein labelling, carbohydrate therapeutics and biomarkers, and the study of protein-protein interactions.

Programme - Tuesday 20th March

- 09:00 Registration
- 10:00 Welcome and opening remarks
- 10:15 Development of bisubstrate-based protein kinase inhibitors and monitoring of phosphatase activity using dynamic peptide microarrays
Rob Liskamp, Utrecht University
- 11:00 Chemical handles on post-translational modifications: enabling tools for drug discovery
Ed Tate, Imperial College London
- 11:45 Manipulating maleimides: new opportunities in protein modification
James Baker, University College London
- 12:30 Lunch
- 13:30 Inhibition of protein-protein interactions using designed molecules
Andrew Wilson, Leeds University
- 14:15 Synthesis directed at the disruption of protein-protein interactions - asthma- and cancer- related targets
Alan Spivey, Imperial College London
- 15:00 Synthetic approaches for the systematic exploration of biologically-relevant chemical space
Adam Nelson, Leeds University
- 15:45 Refreshments
- 16:15 The GSK published kinase inhibitor set: a resource for investigating the untargeted kinome
Bill Zuercher, GlaxoSmithKline
- 17:00 A chemical approach to controlling cell fate
Sheng Ding, Scripps
- 17:45 Poster session and drinks reception
- 19:30 Conference dinner

Programme

Programme - Wednesday 21st March

- 09:00 Chemical biology of glucosylceramide metabolism in health and disease
Herman Overkleeft, Leiden University
- 09:45 Enzymatic reactions on arrays surface
Sabine Flitsch, University of Manchester
- 10:30 Refreshments
- 11:00 Sugars and proteins
Ben Davis, Oxford University
- 11:45 Iminosugar drug discovery
Richard Storer, Summit
- 12:30 Lunch
- 13:30 [presentation title to be confirmed]
Nigel Ramsden, Cellzome Ltd
- 14:15 Chemical probes for epigenetics
Mark Bunnage, Pfizer
- 15:00 Refreshments
- 15:30 Chemogenomic approaches to novel antimalarials
Ralph Mazitschek, Harvard University
- 16:15 Small molecule epigenetic intervention of disease
Matt Fuchter, Imperial College London
- 17:00 Closing remarks

Abstract & Registration Information

Posters

Posters are seen as an important part of the meeting and will be displayed throughout. Poster sessions will take place each lunchtime and on Tuesday evening. Offers of posters relevant to the themes of the meeting are invited. Please submit a one-page abstract using the template provided on the website, to reach the Secretariat by 21st February.

Exhibition Opportunities

A limited number of trade stands can be accommodated, charged at £550 (excluding delegate), and allocated on a "first come, first served" basis.

Who should attend

This meeting is aimed at chemists and biologists from across the academic and industrial sectors interested in harnessing chemical science to answer fundamental questions in biology.

Registration

Website: www.maggichurchousevents.co.uk/bmcs

Registration: For card payment, please register online via the website above.

Cheque and bank transfer payment: Please complete and return the form overleaf.

Discounts: We offer discounts to RSC members quoting membership number and to students. Early-bird discounts apply to payments received by 31st December and standard rates will apply thereafter. A late fee of £40 will be charged on registration payments received after 11th February.

Cancellation: In the event of your cancellation before 5th March, 80% of the fee paid will be refunded. Refunds will not be possible after that date, although substitutions are possible at any time. In the unlikely event of cancellation of the meeting, fees paid will be refunded in full.

Bursaries

The organisers have a number of bursaries available for students, preference being given to those offering posters and to student members of the RSC and EFMC. The bursaries are worth £250 which will be used for the registration fee with the balance available for travel and accommodation expenses against receipts. To apply, please complete a bursary application form and arrange for the research supervisor to endorse the application. Please send by e-mail to the secretariat by 31st January.

Acknowledgements / Sponsors

Special thanks to AstraZeneca for hosting this event, and to Pfizer and GlaxoSmithKline for their generous sponsorship

