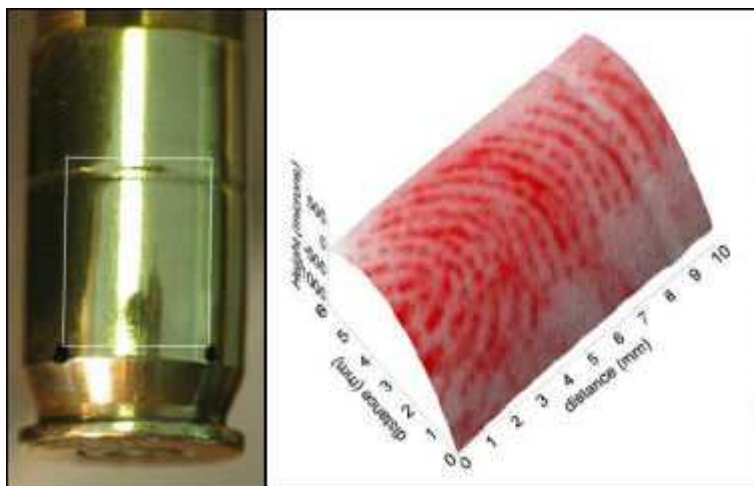


CSI - Novel Fingerprint Detection (Swansea University)

Wednesday 11th May 2011



An invitation to attend a lecture organised by SWMA to hear about a novel technique for fingerprint detection, currently being developed in Swansea University

Within the Materials Research Centre, [Swansea University](http://www.swansea.ac.uk), Professor Neil McMurray and Dr Geraint Williams have developed a technique that enables fingerprints to be visualised on metallic and electrically conductive surfaces without the need to develop the prints first.

The technique involves the use of an instrument called a scanning Kelvin probe (SKP), which measures the voltage, or electrical potential, at pre-set intervals over the surface of an object on which a fingerprint may have been deposited. These measurements can then be mapped to produce an image of the fingerprint.

This method is non-contact, so has the potential to allow fingerprints to be retrieved while still leaving intact any material that could subsequently be subjected to DNA analysis. The University of Swansea group hope to have a forensically usable prototype in the near future and it is intended that eventually the instrument will be manufactured in sufficiently large numbers that it will be widely used by forensic teams on the frontline.

Programme

**Venue = Civil and Computational Engineering Lecture Theatre (CCELT)
Engineering Building, Swansea University**

6.00pm – Buffet / Networking

6.30 – 7.30pm Lecture – Geraint Williams

Please let Dave Eaves know if you will attend (for catering arrangements):

(email = david eaves: 326238@gmail.com)