

Fig. S1, Supporting Information

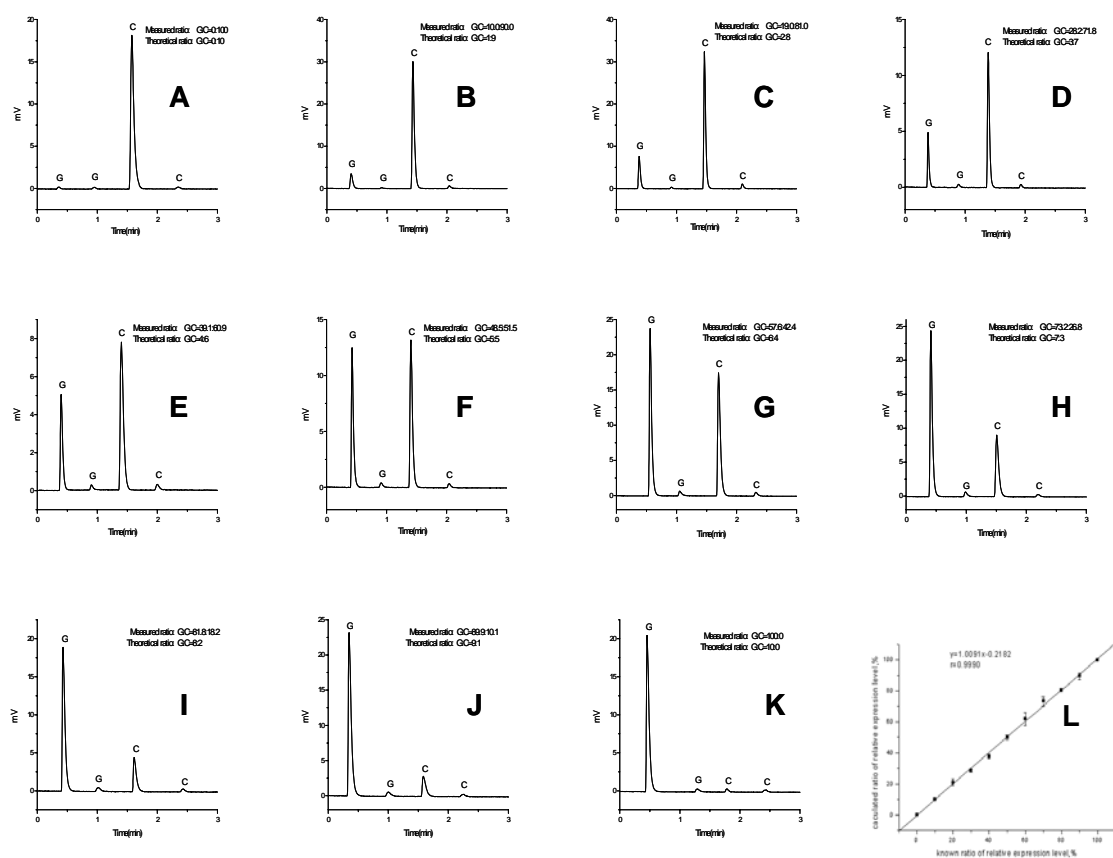


Fig. S1 Accuracy of the improved SRPP method.

(A-K) Pyrograms of artificial templates pooled with two source-specific cDNAs at ratios of 0:10, 1:9, 2:8, 3:7, 4:6, 5:5, 6:4, 7:3, 8:2, 9:1, and 10:0 (G:C), respectively. Each dNTP was dispensed twice to detect background due to PPI impurities in the dNTP solution. (L) Correlation between the theoretical and observed ratios in two sources by the SRPP method, based on the comparison of peak intensities ($n=3$). The ratios were calculated with the formula $G/(G+C) \times 100$, where G and C signify peak intensity.

Fig. S2, Supporting Information

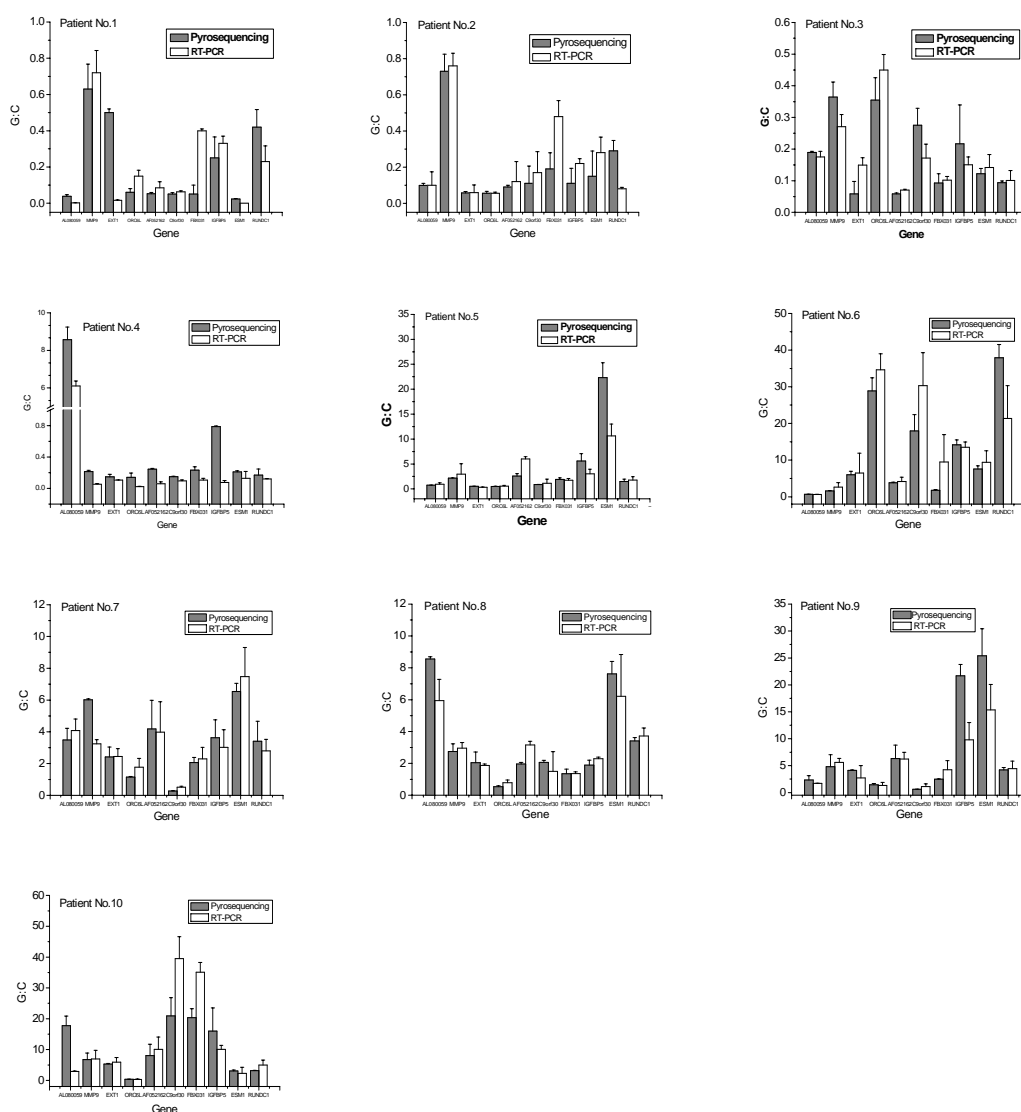


Fig. S2 Comparison of gene expression levels of ten breast prognostic genes in normal and tumor tissues from 10 patients, as measured by portable bioluminescence analysis (grey) and real-time PCR (white).