

Nanoparticle Labelling-based Magnetic Immunoassay on Chip Combined with Electrothermal Vaporization – Inductively Coupled Plasma Mass Spectrometry for the Determination of Carcinoembryonic Antigen in Human Serum

Beibei Chen, Bin Hu*, Ping Jiang, Man He, Hanyong Peng, Xing Zhang

Key Laboratory of Analytical Chemistry for Biology and Medicine (Ministry of Education),

Department of Chemistry, Wuhan University, Wuhan 430072, China

*Corresponding author: Dr. Bin Hu, E-mail: binhu @ whu.edu.cn, Fax: 86-27-68754067

Contents:

Figures S-1 to S-5

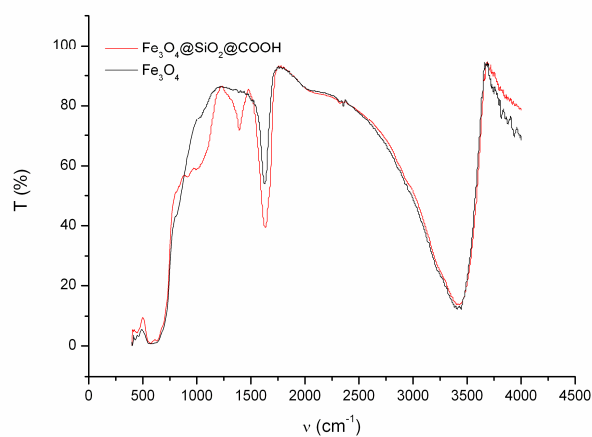


Figure S-1 FT-IR of IDA-SCMNPs

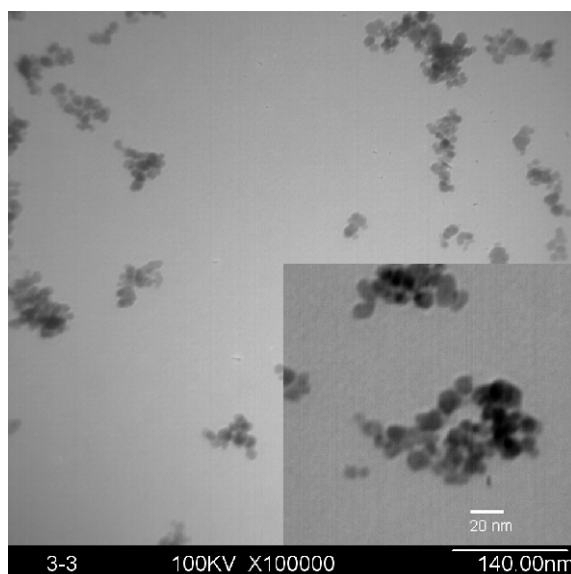


Figure S-2 TEM of IDA-SCMNPs

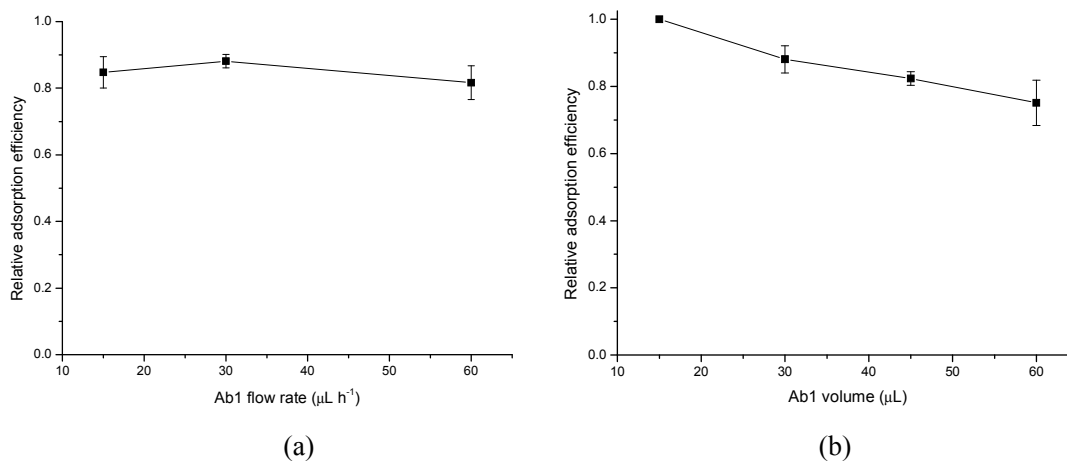


Figure S-3 Effect of Ab1 flow rate (a) and volume (b)

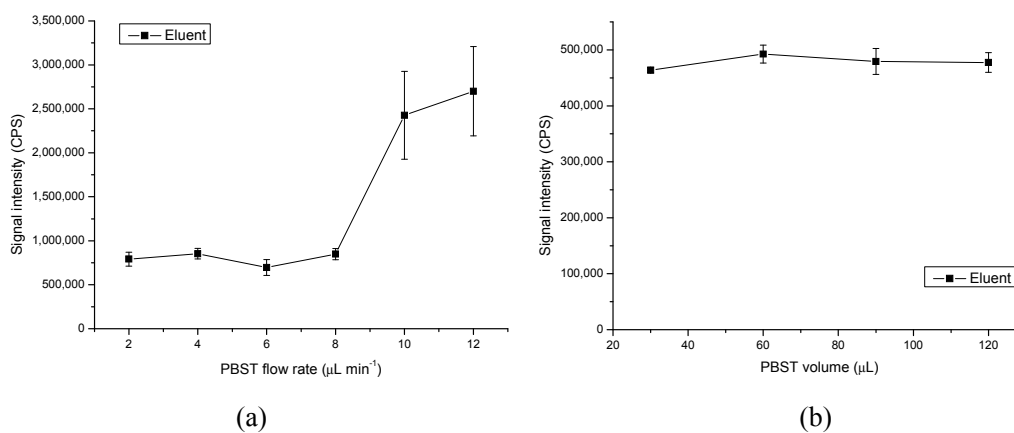


Figure S-4 Effect of PBST flow rate (a) and volume (b). (Blocking: 5% (m/v) BSA, 60 μL , 8 $\mu\text{L min}^{-1}$; other experimental conditions seen in Fig. 4)

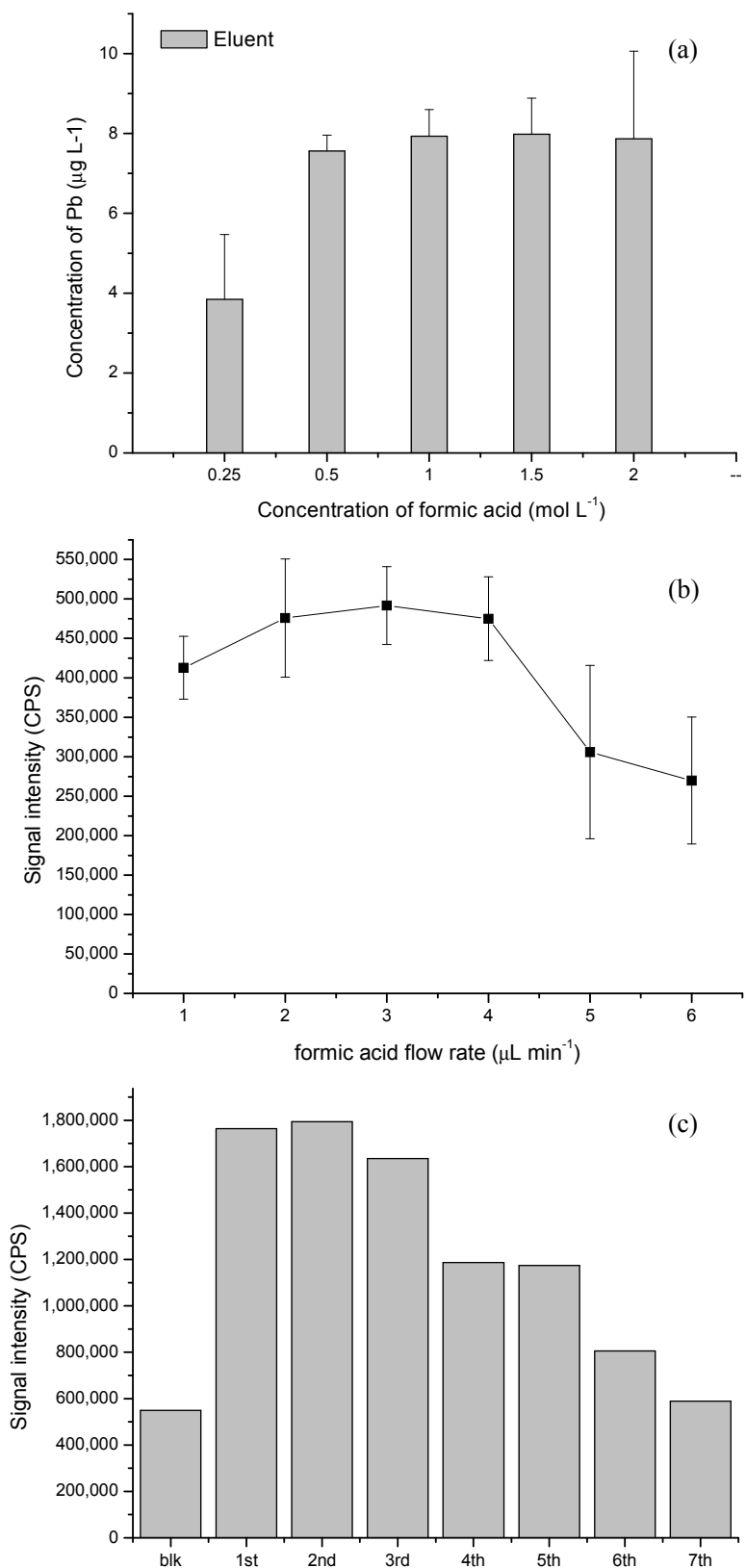


Figure S-5 Effect of the concentration (a), flow rate (b) and volume (c) of formic acid.
(Blocking: 5% (m/v) BSA, 60 μL , 8 $\mu\text{L min}^{-1}$; Flushing: 0.5% (v/v) PBST, 30 μL , 6 $\mu\text{L min}^{-1}$;
other experimental conditions seen in Fig. 4)