

SUPPLEMENTARY MATERIAL

for

Square-wave adsorptive stripping voltammetric determination of nanomolar levels of bezafibrate using a glassy carbon electrode modified with multi-walled carbon nanotubes within a dihexadecyl hydrogen phosphate film

Jorge Armando Ardila^a, Geiser Gabriel Oliveira^b, Roberta Antigo Medeiros^c and
Orlando Fatibello-Filho^{a,d*}

^aDepartamento de Química, Universidade Federal de São Carlos, C.P. 676,
CEP 13.560-970, São Carlos – SP, Brazil

^bInstituto de Química de São Carlos, USP – Universidade de São Paulo, C.P. 780,
CEP 13.560-970, São Carlos – SP, Brazil

^cCentro de Engenharias e Ciências Exatas, Universidade do Oeste do Paraná,
CEP 85903-000, Toledo – PR, Brazil

^dInstituto Nacional de Ciência e Tecnologia de Bioanalítica (INCT de Bioanalítica)

*Corresponding author. Tel.: +55-16-33518098; Fax +55-16-33518350

e-mail: bello@ufscar.br (O. Fatibello-Filho)

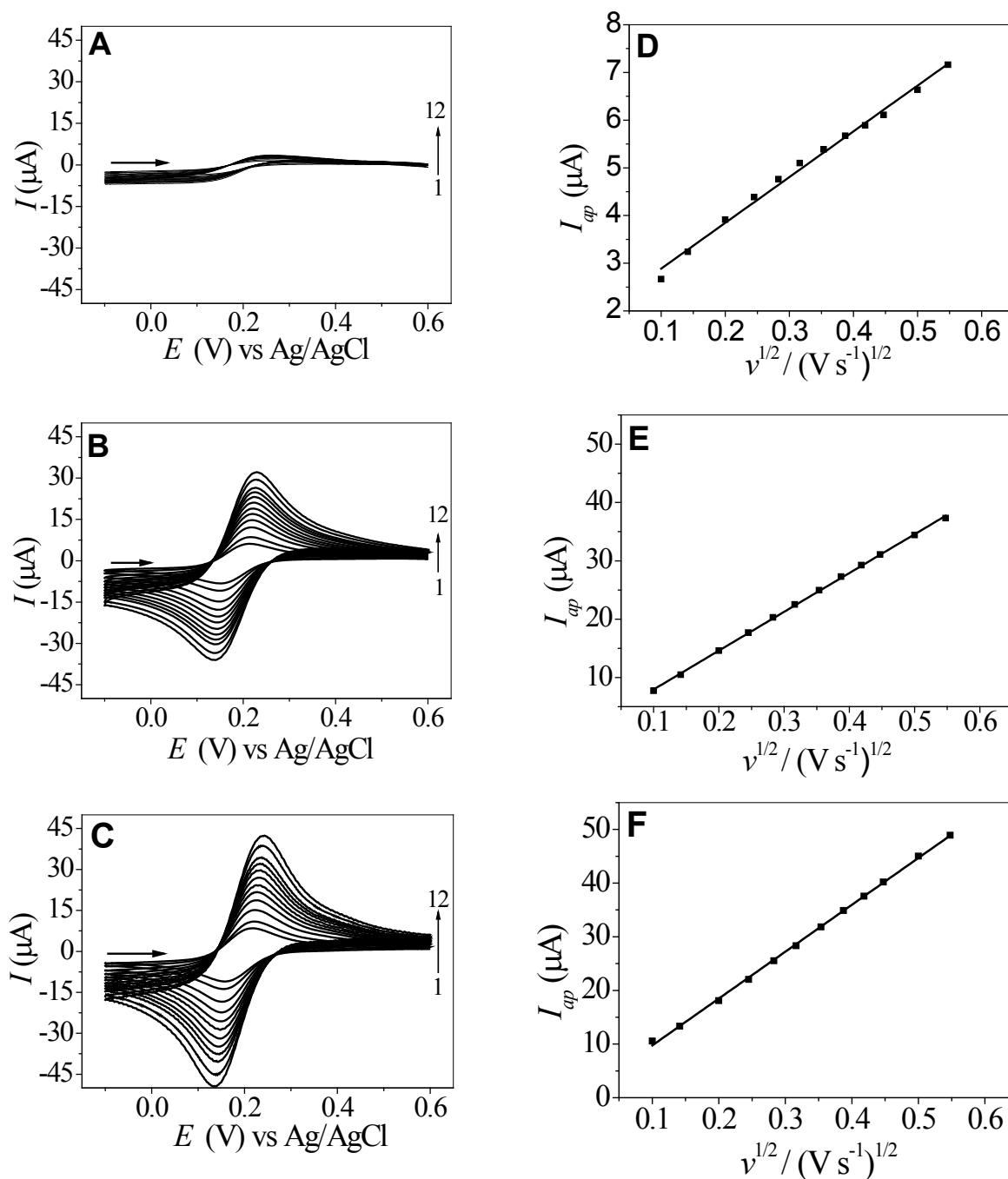


Figure SM-1: Cyclic voltammograms for $1.0 \text{ mmol L}^{-1} \text{ K}_3[\text{Fe}(\text{CN})_6]$ in $0.1 \text{ mol L}^{-1} \text{ KCl}$ at the (A) DHP/GCE (B) GCE and (C) MWCNT-DHP/GCE at different scan rates (ν): (1) 0.01, (2) 0.02, (3) 0.03, (4) 0.05, (5) 0.07, (6) 0.100, (7) 0.125, (8) 0.150, (9) 0.170, (10) 0.200, (11) 0.250 and (12) 0.300 V s^{-1} . Linear dependence of I_{ap} on $\nu^{1/2}$ at the (A) DHP/GCE (B) GCE and (C) MWCNTs-DHP/GCE.

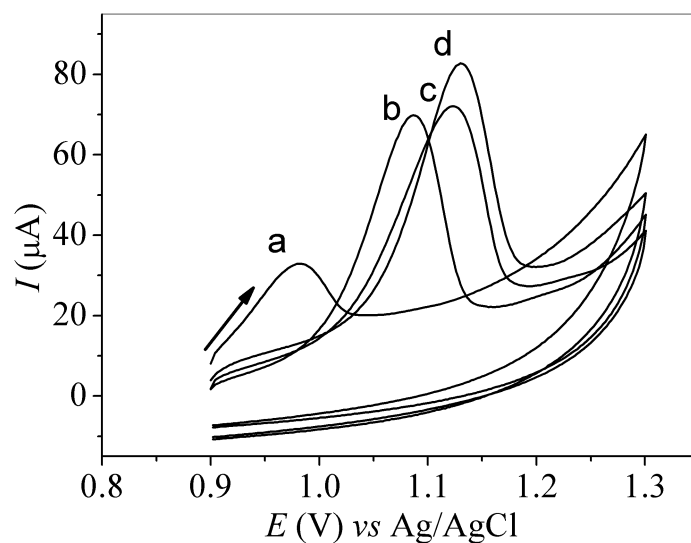


Figure SM-2: Cyclic adsorptive stripping voltammograms (50 mV s^{-1}) of 300 nmol L^{-1} BZF in different supporting electrolytes obtained using the MWCNT-DHP/GCE: (a) 0.10 mol L^{-1} acetate buffer solution (pH 4.5), (b) 0.10 mol L^{-1} phosphate buffer solution (pH 2.0), (c) BR buffer solution (pH 2.0) and (d) 0.1 mol L^{-1} sulphuric acid solution. Absorption time 180 s.

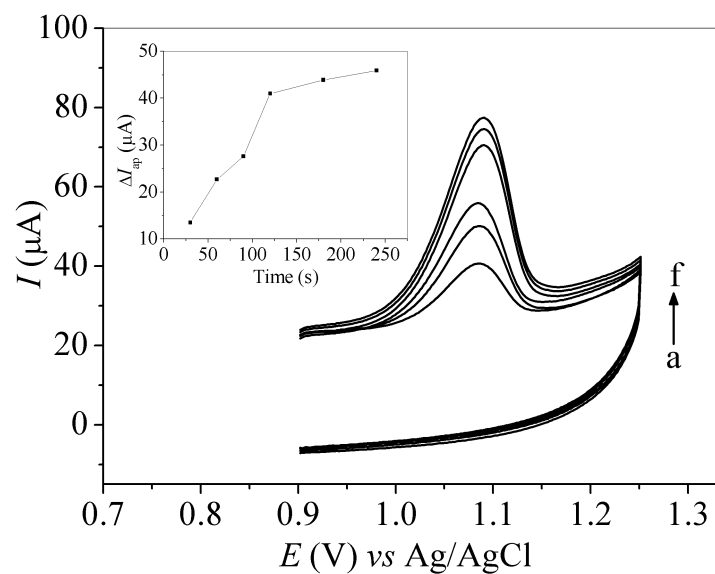


Figure SM-3: Cyclic adsorptive stripping voltammograms (50 mV s^{-1}) of 300 nmol L^{-1} BZF in phosphate buffer solution (pH 2.0) at different adsorption times: (a) 30, (b) 60, (c) 90, (d) 120, (e) 180, (f) 240 s. Insert: dependence of ΔI_{ap} on adsorption time.

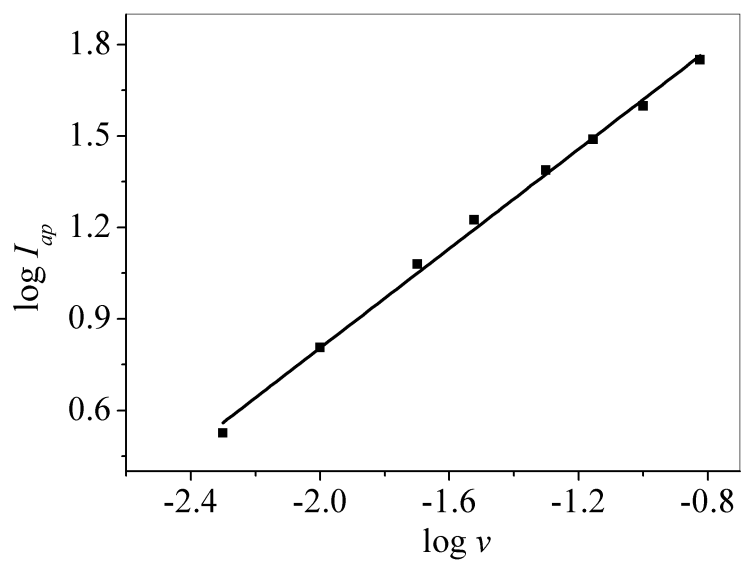


Figure SM-4: Linear dependence of $\log I_{ap}$ on $\log \nu$ for 300 nmol L^{-1} BZF in phosphate buffer solution (pH 2.0) using the MWCNT-DHP/GCE.