

Supplementary Information

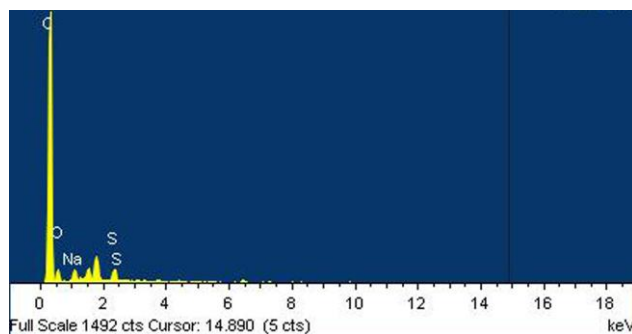


Fig. S1 EDS spectra of CNSs xanthate.

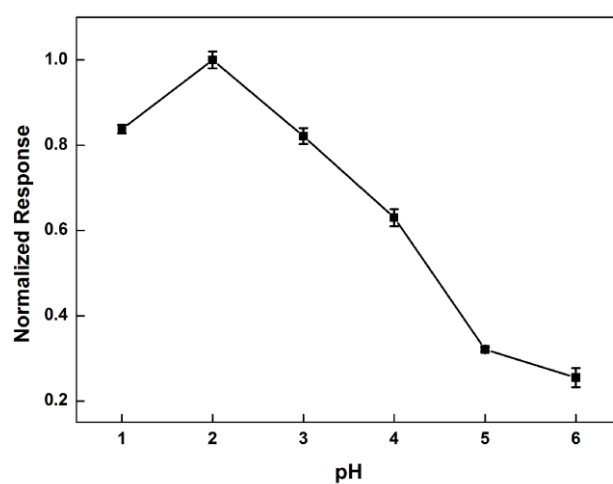


Fig. S2 Plots of SWSVs relative peak current against pH (deposition potential: -0.4 V, deposition time: 180s) obtained from the modified CPE for 2 μM Cu^{2+} in 0.01 M HNO_3 solution.

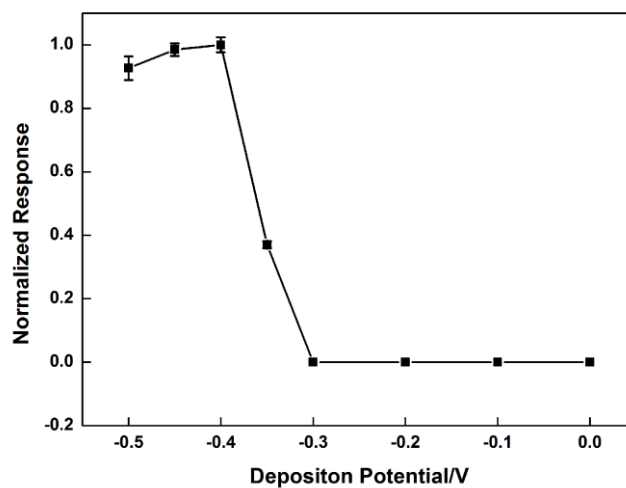


Fig. S3 Plots of SWSVs relative peak current against deposition potential (deposition time: 180s) obtained from the modified CPE for $2 \mu\text{M Cu}^{2+}$ in 0.01 M HNO_3 solution.

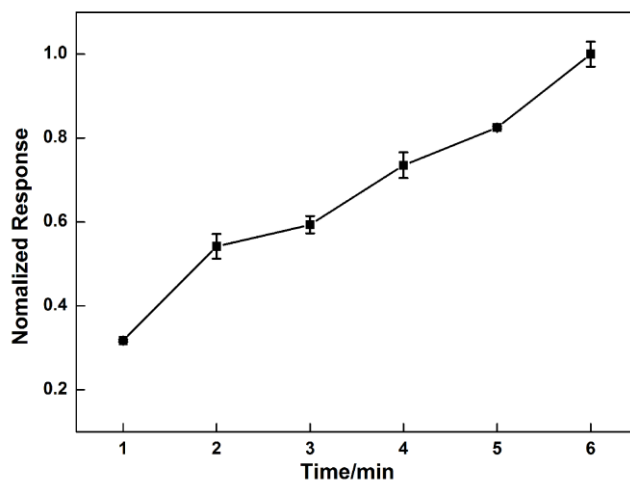


Fig. S4 Plots of SWSVs relative peak current against deposition time (deposition potential: -0.4 V) obtained from the modified CPE for $2 \mu\text{M Cu}^{2+}$ in 0.01 M HNO_3 solution.

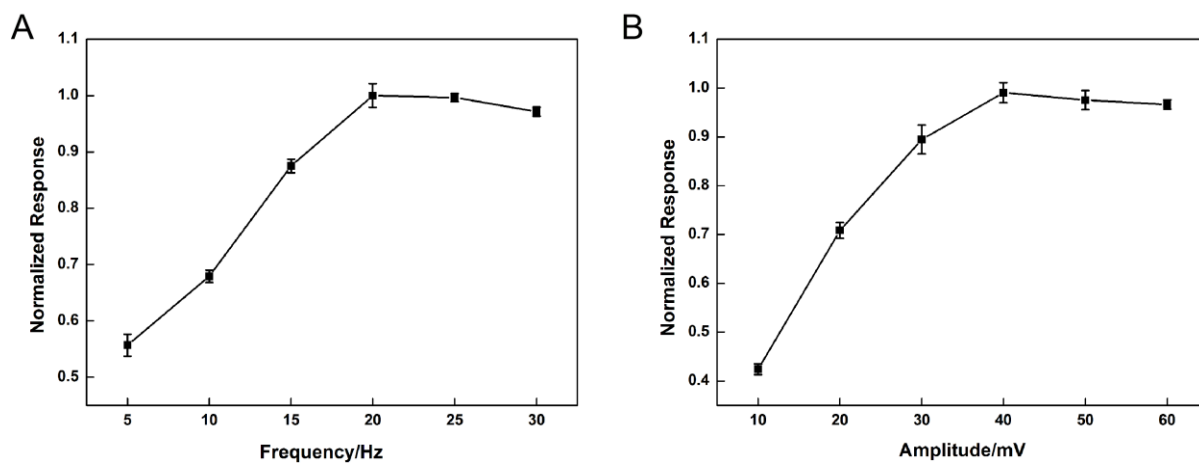


Fig. S5 Plots of SWSVs relative peak current against (A) frequency (amplitude: 40 mV); (B) amplitude (frequency: 20 Hz), respectively, obtained from the modified CPE for $2 \mu\text{M Cu}^{2+}$ in 0.01 M HNO_3 solution.