

Supplemental information B

Characterization of the herb-derived components in rats following oral administration of *Carthamus tinctorius* extract by extracting diagnostic fragment ions (DFIs) in the MSⁿ chromatograms

Jin-Feng Chen,^{a#} Yue-Lin Song,^{b#} Xiao-Yu Guo,^a Peng-Fei Tu^{ab} and Yong Jiang^{*a}

^a *State Key Laboratory of Natural and Biomimetic Drugs, School of Pharmaceutical Sciences, Peking University, Beijing 100191, China. E-mail: yongjiang@bjmu.edu.cn; Tel/Fax: +86-10-82802719*

^b *Modern Research Center for Traditional Chinese Medicine, Beijing University of Chinese Medicine, Beijing 100029, China*

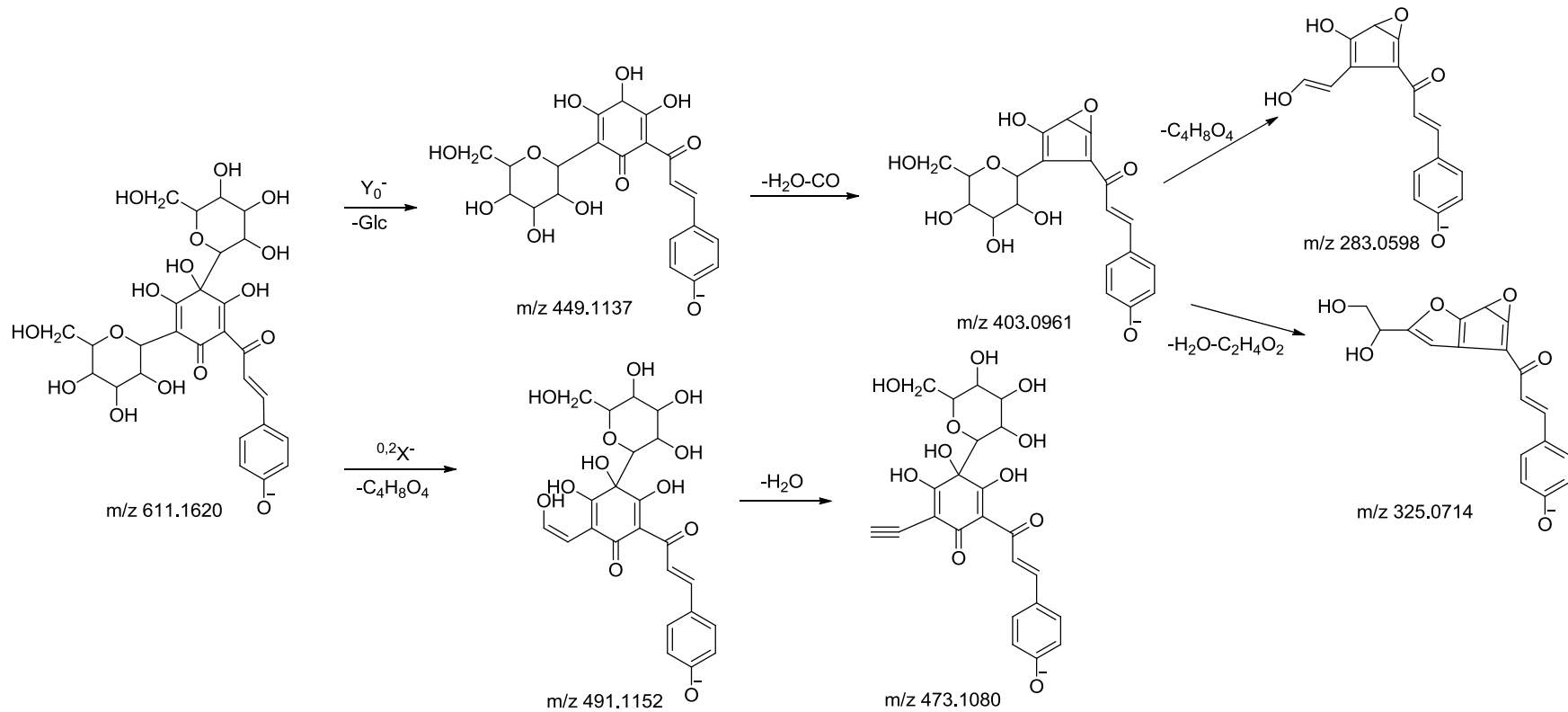


Fig. S1A The characteristic fragmentation pathways of HSYA.

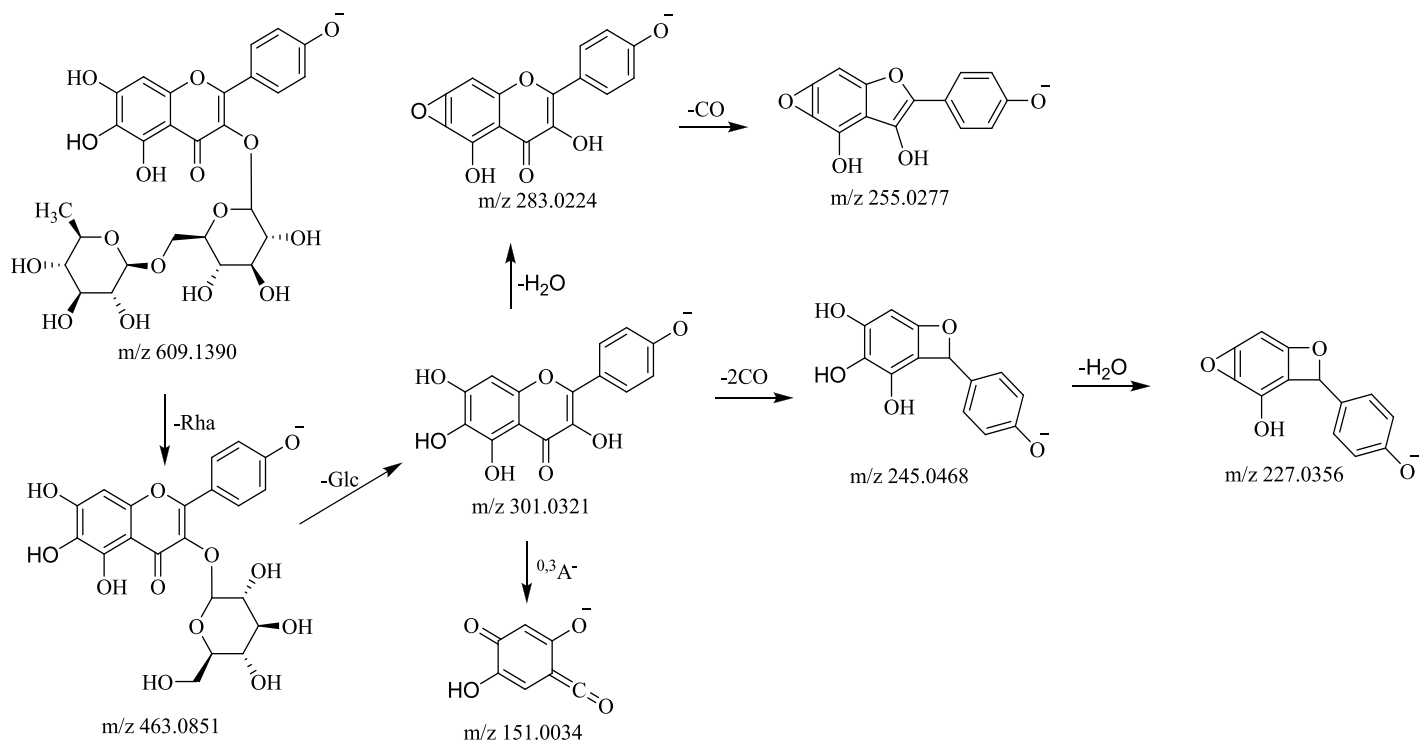


Fig. S1B The characteristic fragmentation pathways of 6-Hydroxykaempferol-3-*O*-rutinoside.

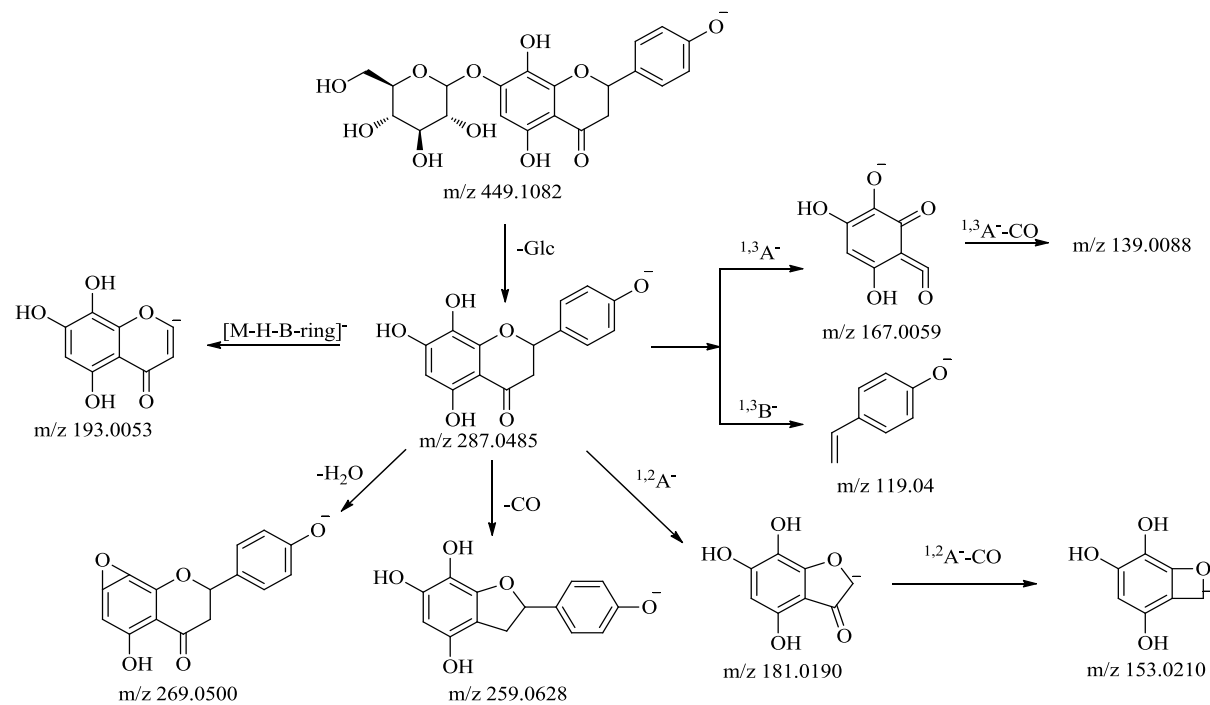


Fig. S1C The characteristic fragmentation pathways of Cathamidin-7-O-glucoside.

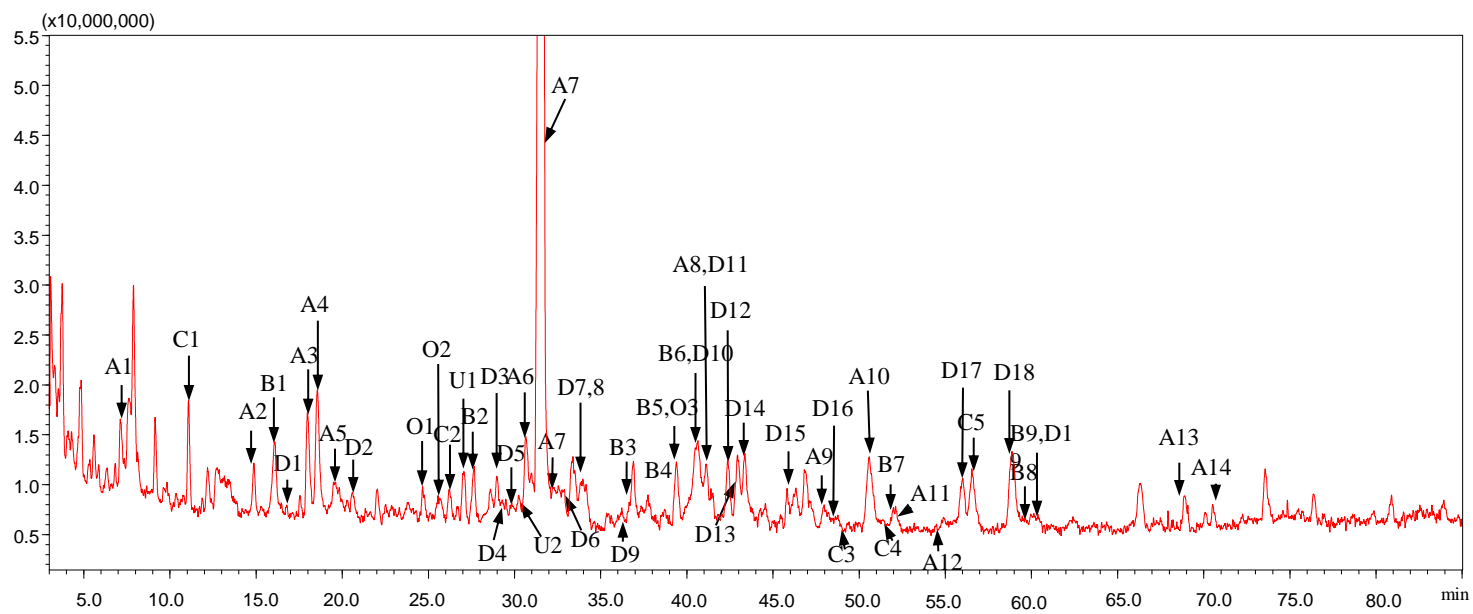


Fig. S2 The total ion current chromatogram (TIC) of ECT.

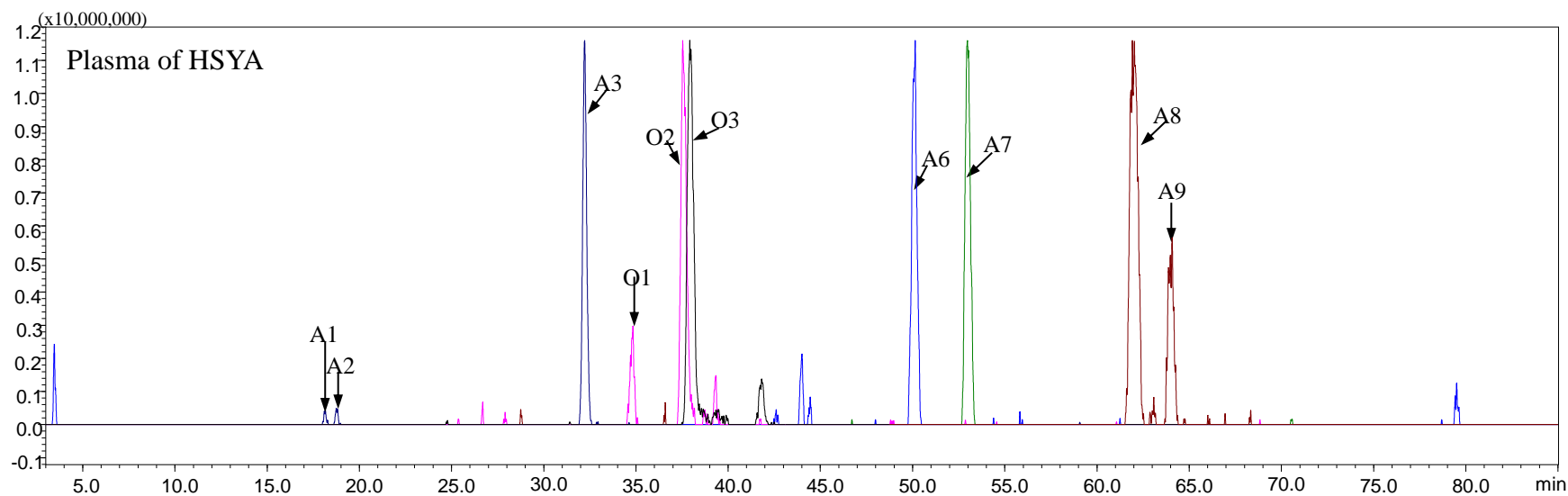
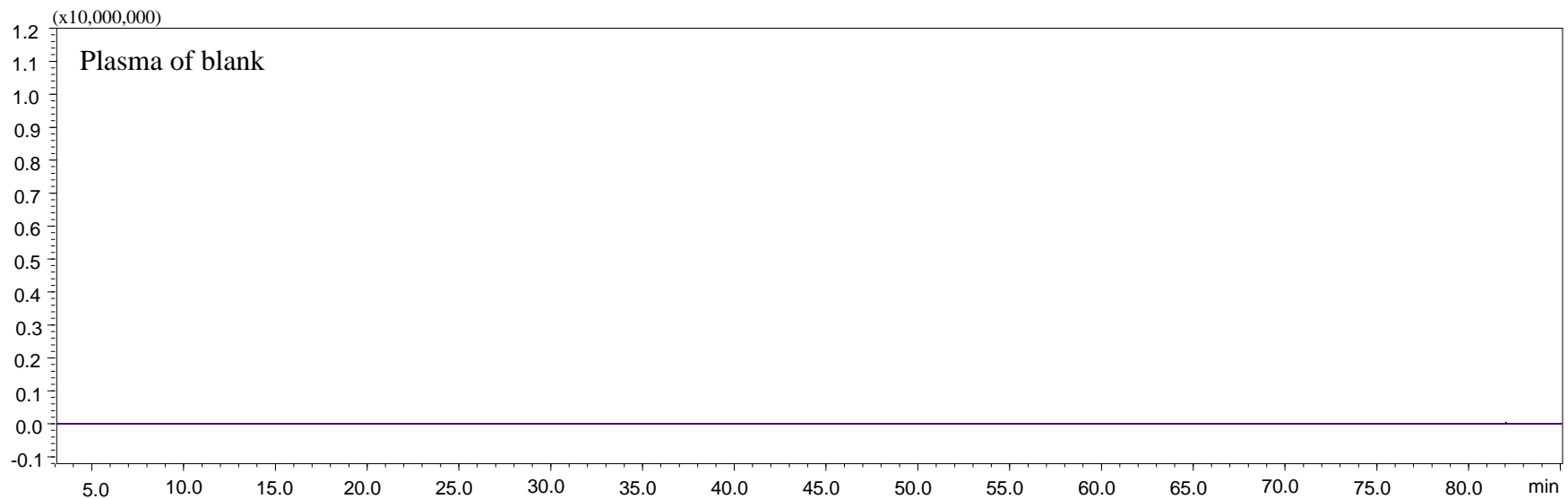


Fig. S3 The extracted ion chromatograms of blank samples and biological samples in rats after oral administration of HSYA.

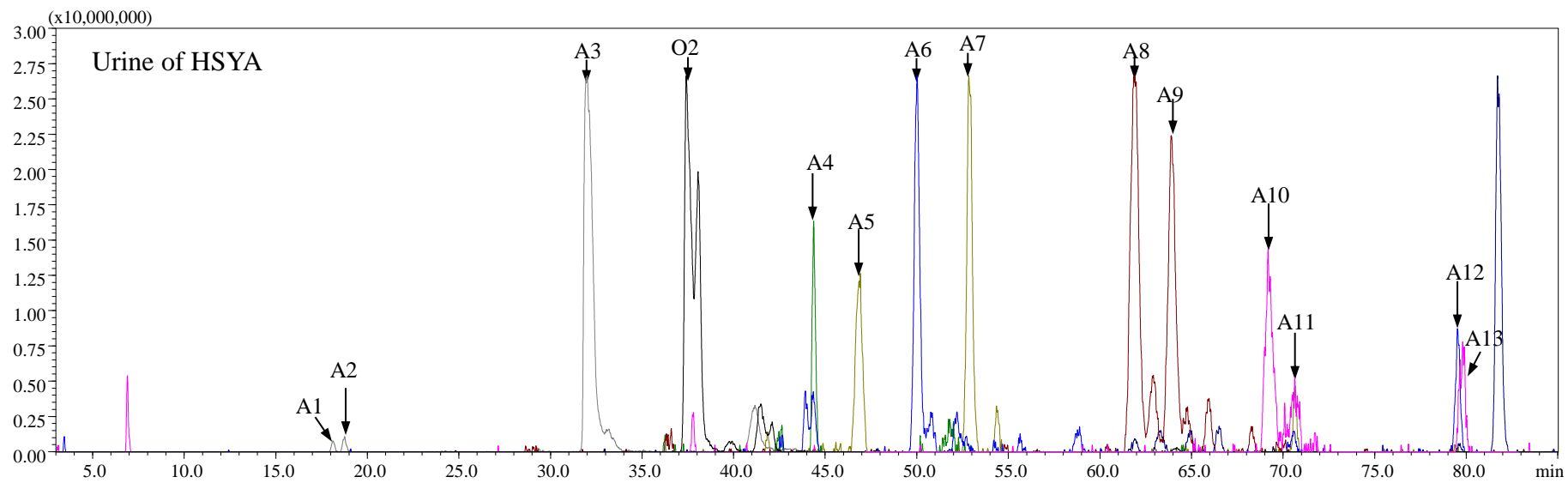
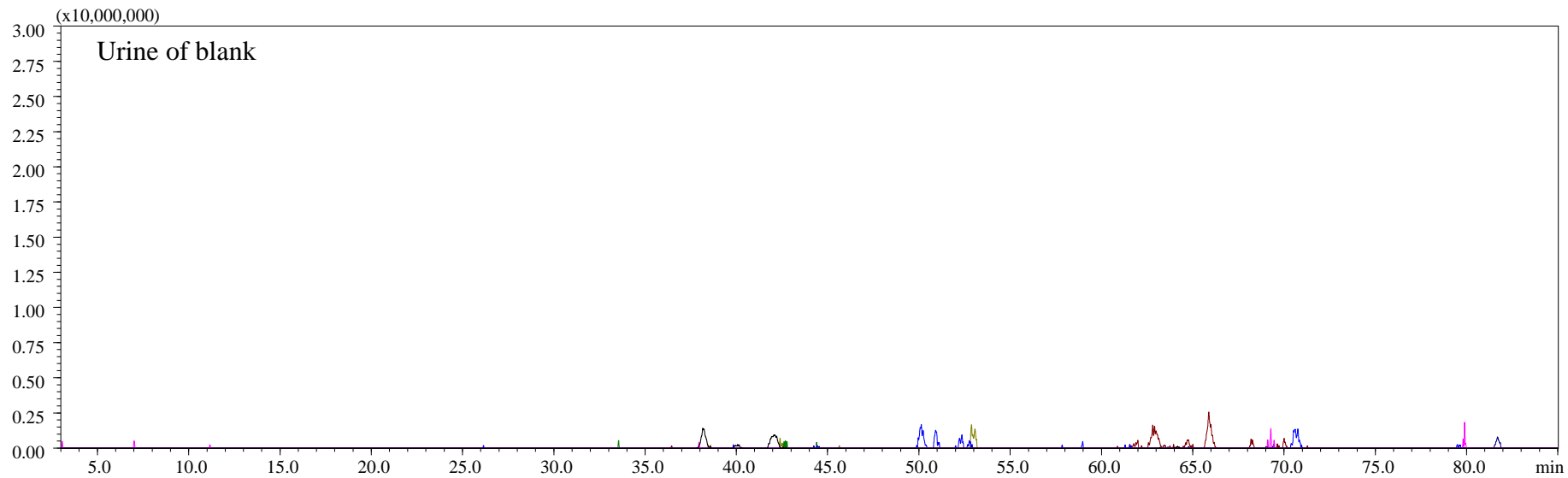


Fig. S3 (continued)

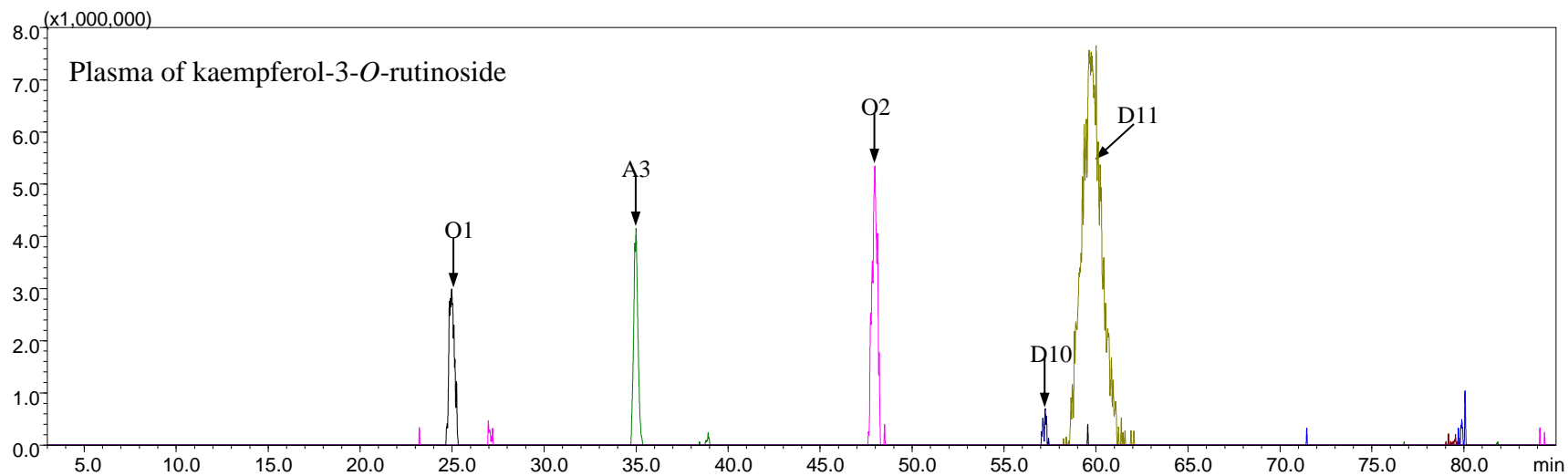
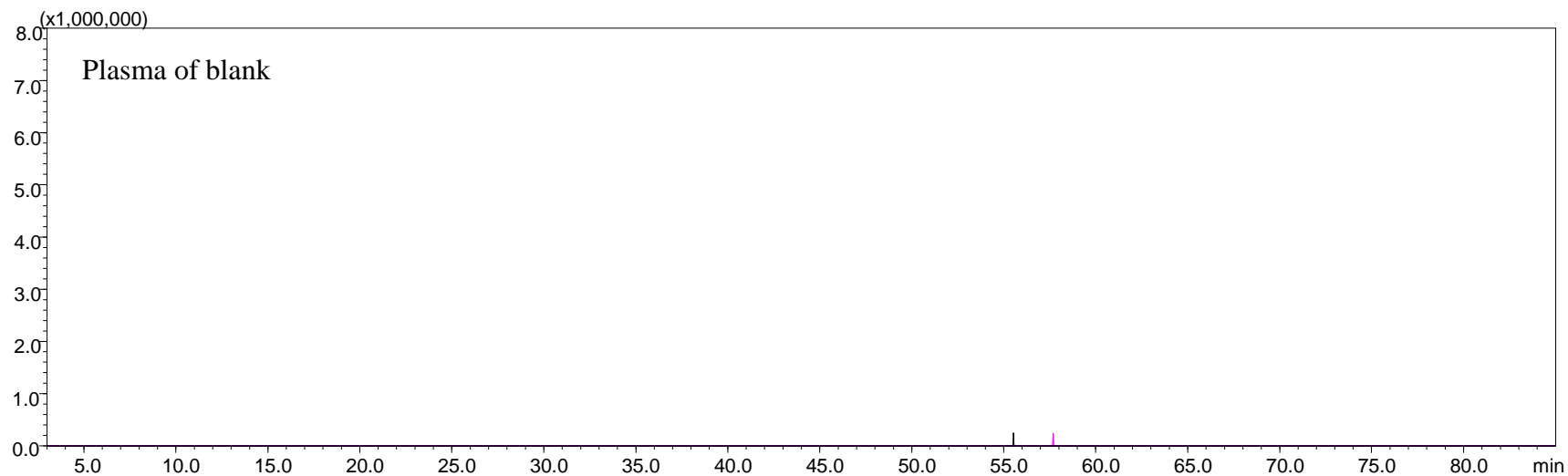


Fig. S4 The extracted ion chromatograms of blank samples and biological samples in rats after oral administration of kaempferol-3-*O*-rutinoside.

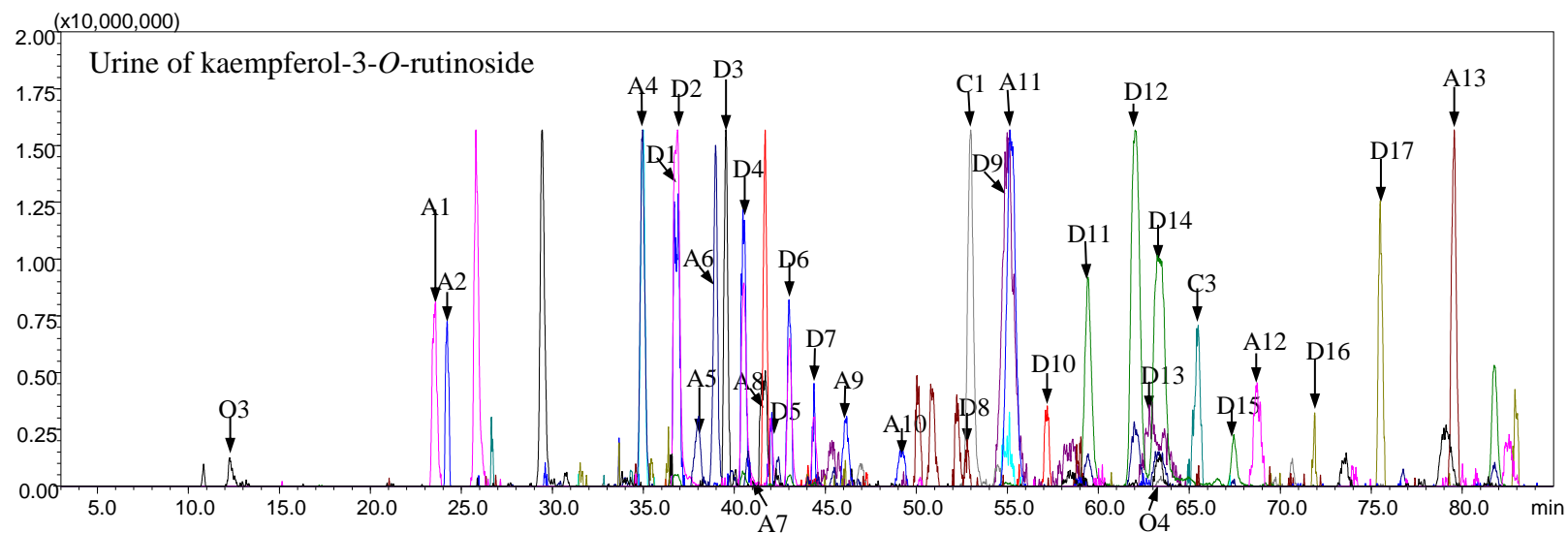
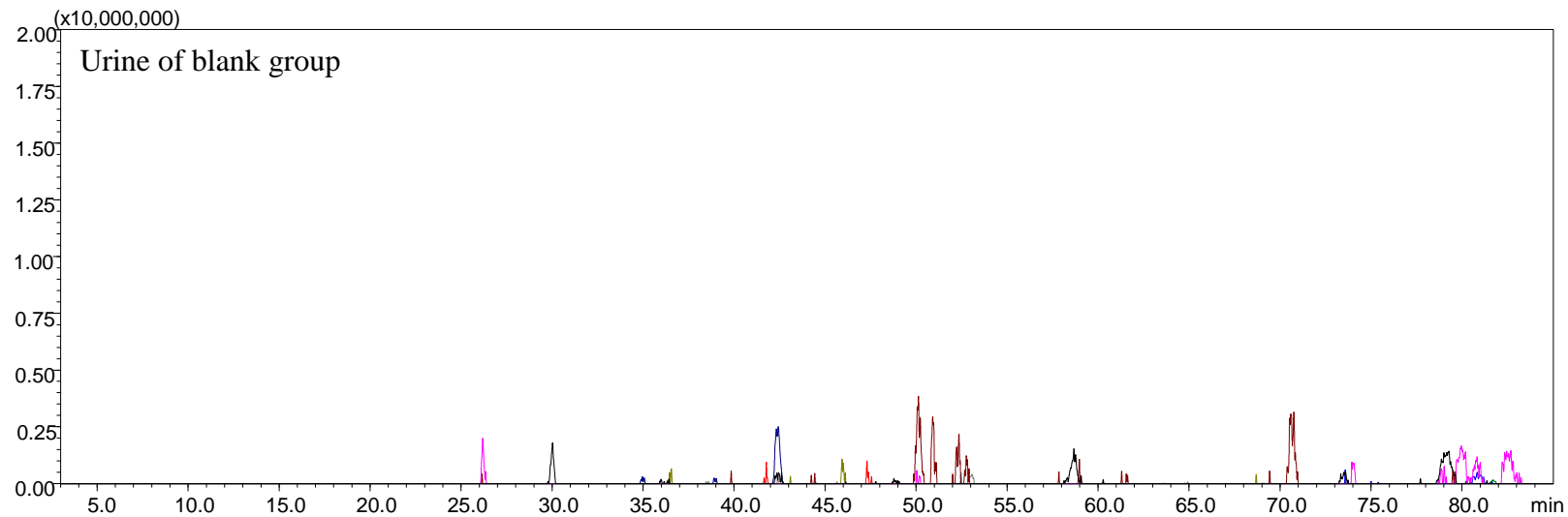


Fig. S4 (continued)

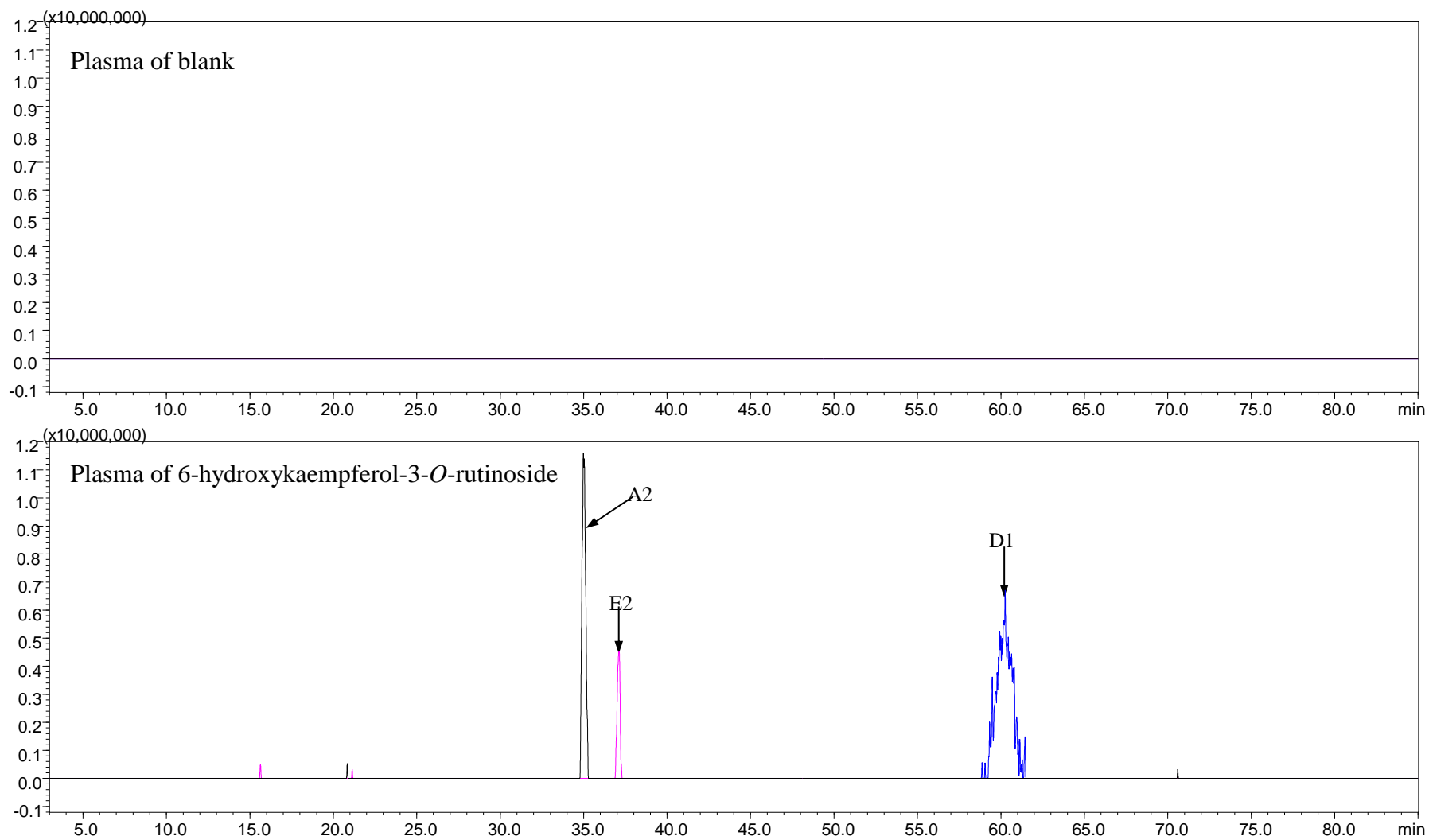


Fig. S5 The extracted ion chromatograms of blank samples and biological samples in rats after oral administration of 6-hydroxykaempferol-3-*O*-rutinoside.

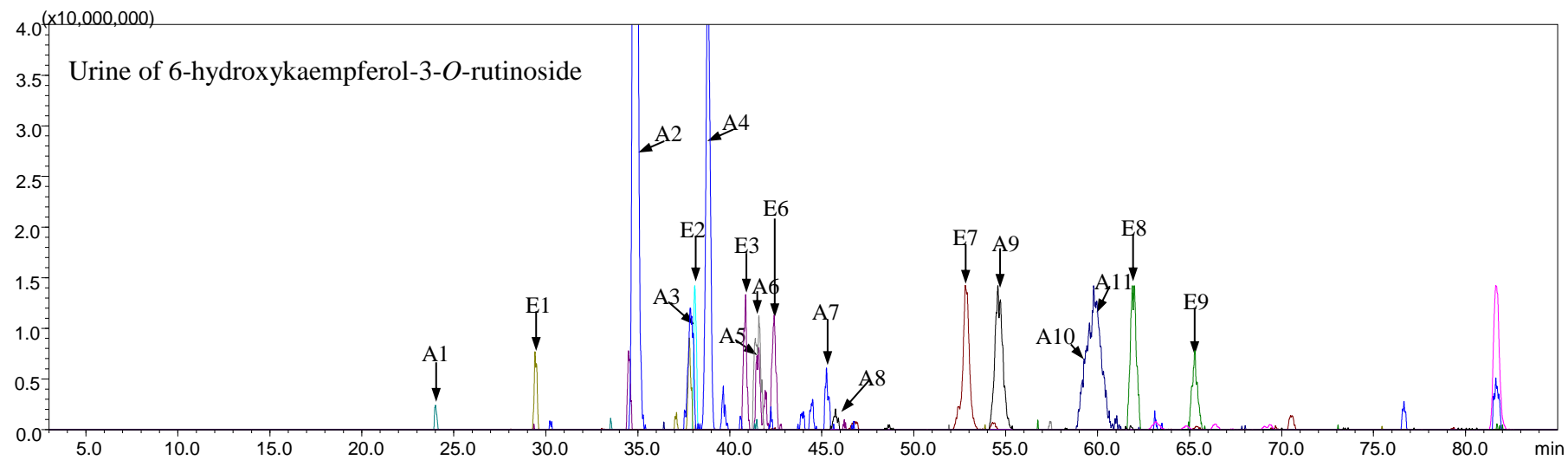
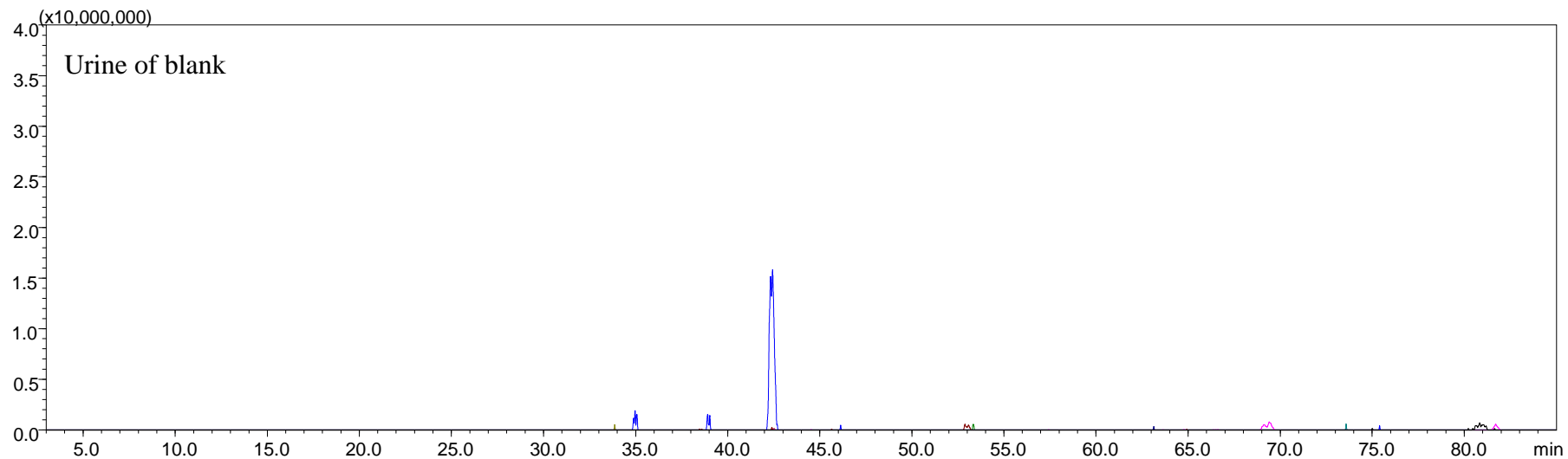


Fig. S5 (continued)

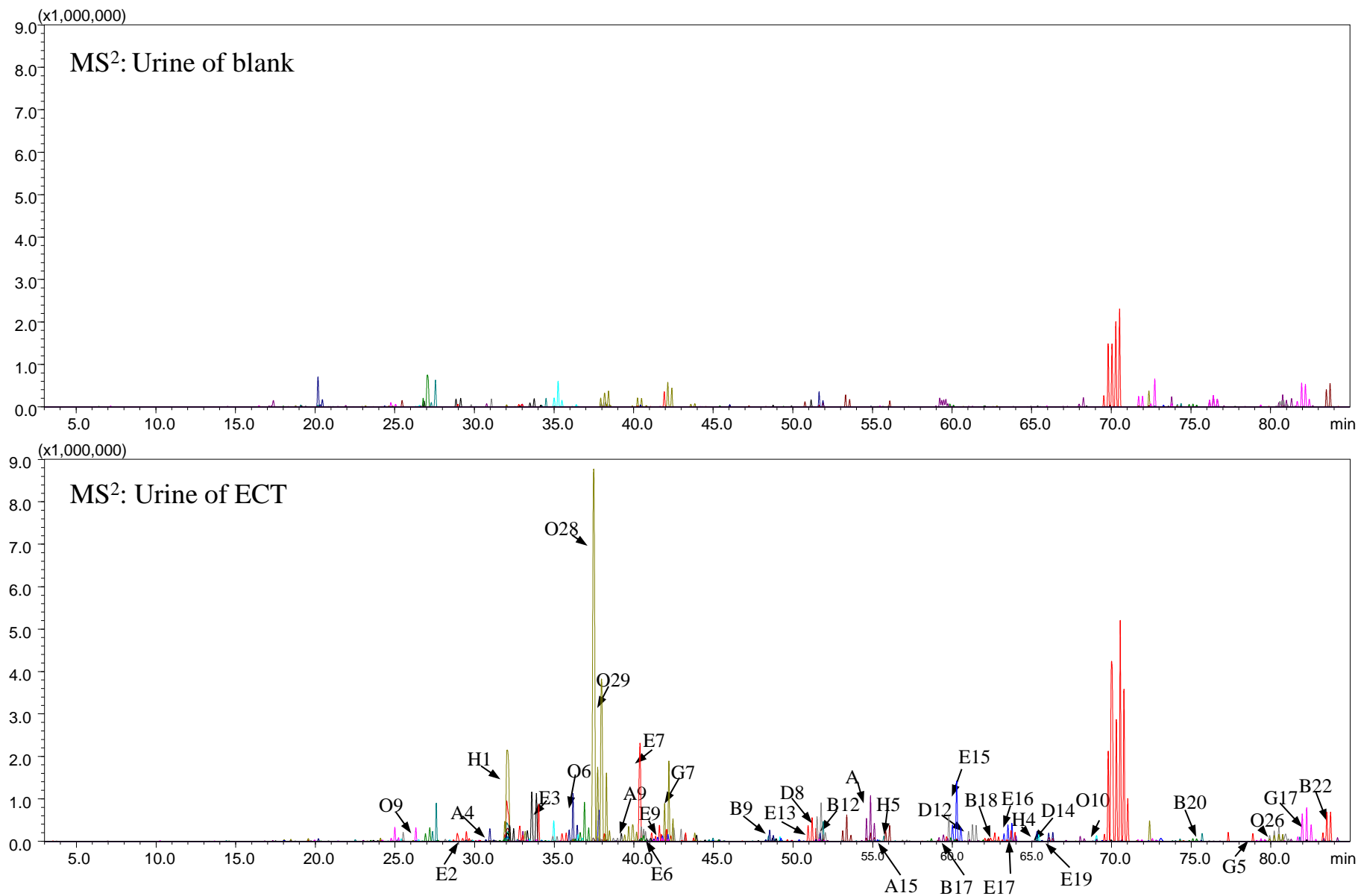


Fig. S6 The MSⁿ E(DFI)Cs of blank samples and biological samples in rats after oral administration of ECT.

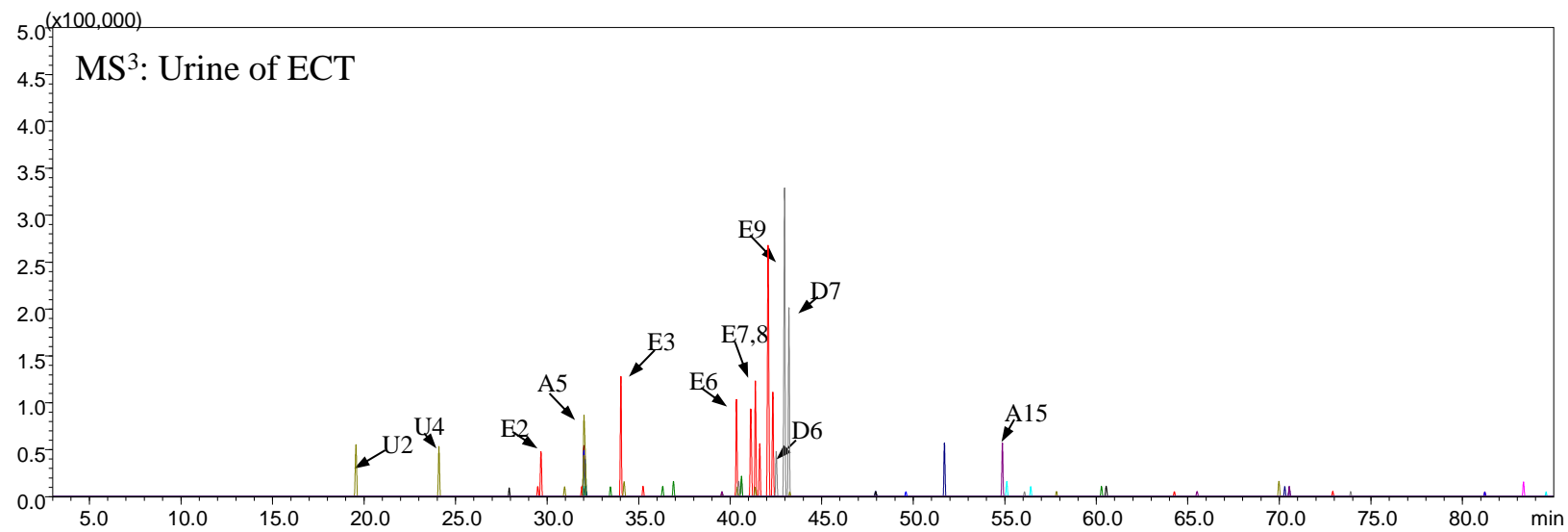
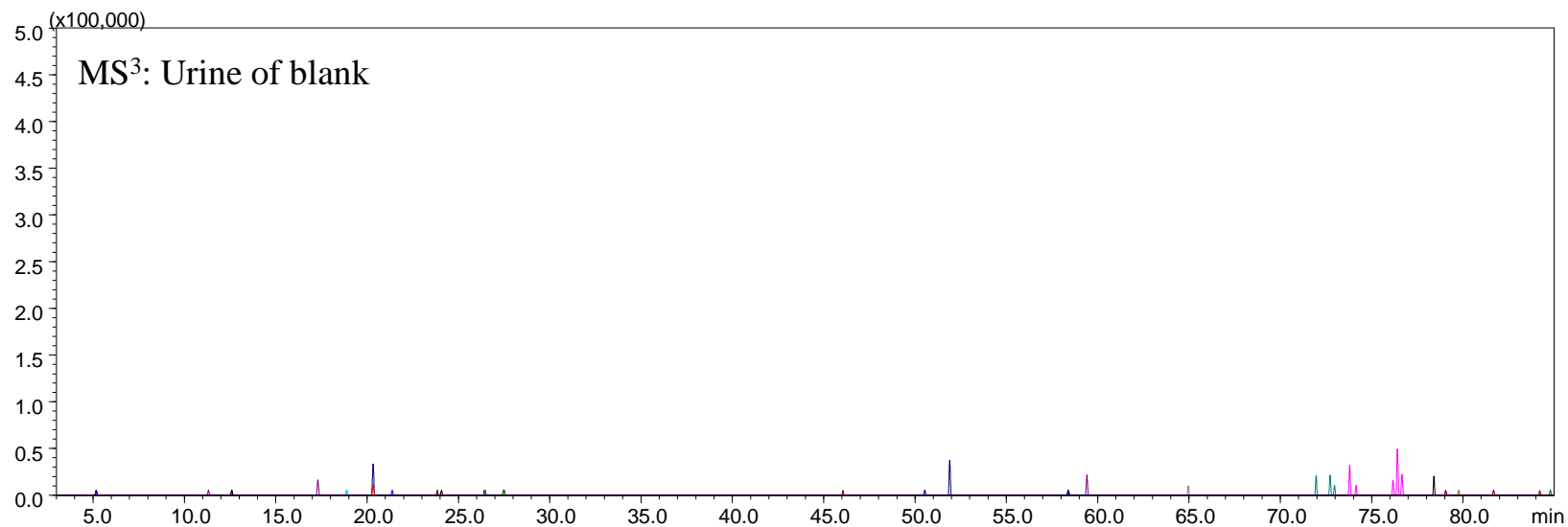


Fig. S6 (continued)

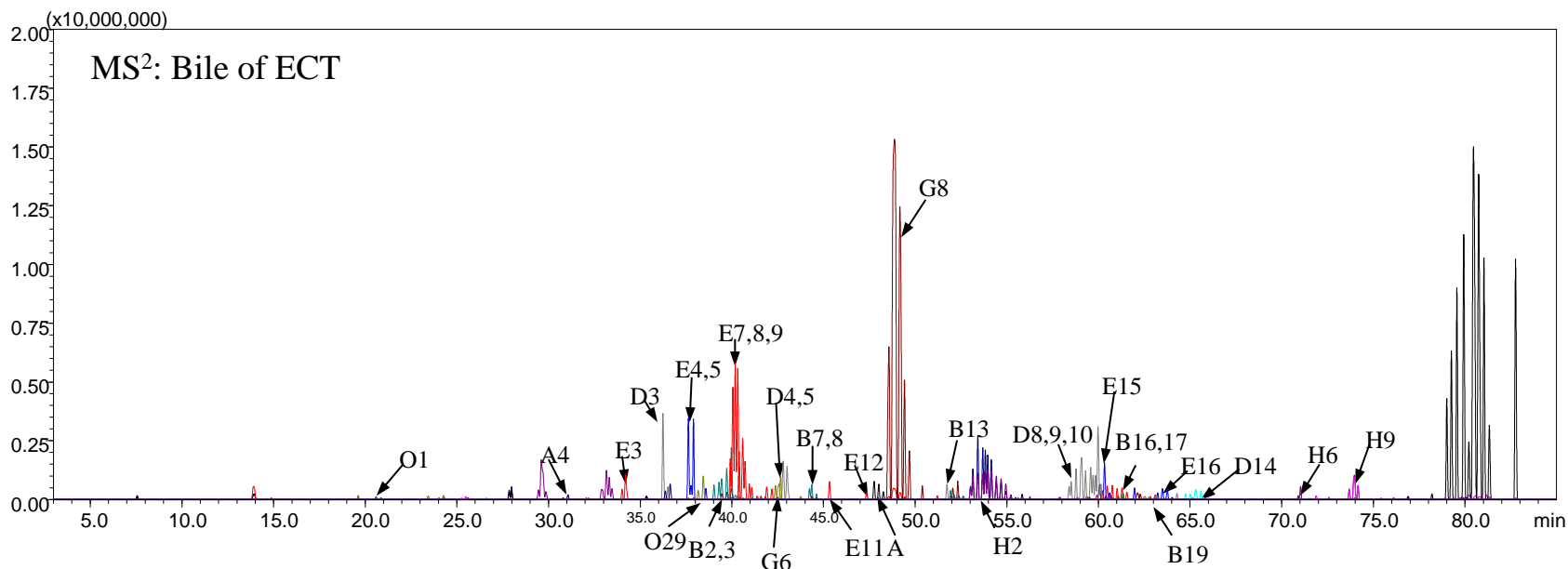
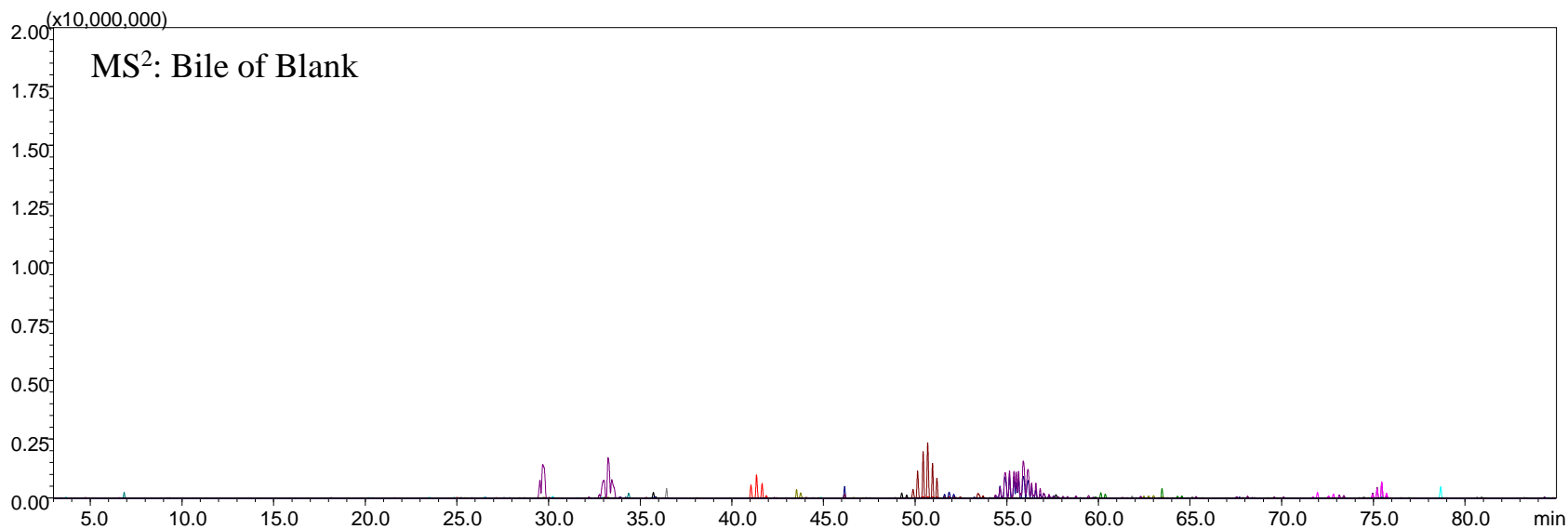


Fig. S6 (continued)

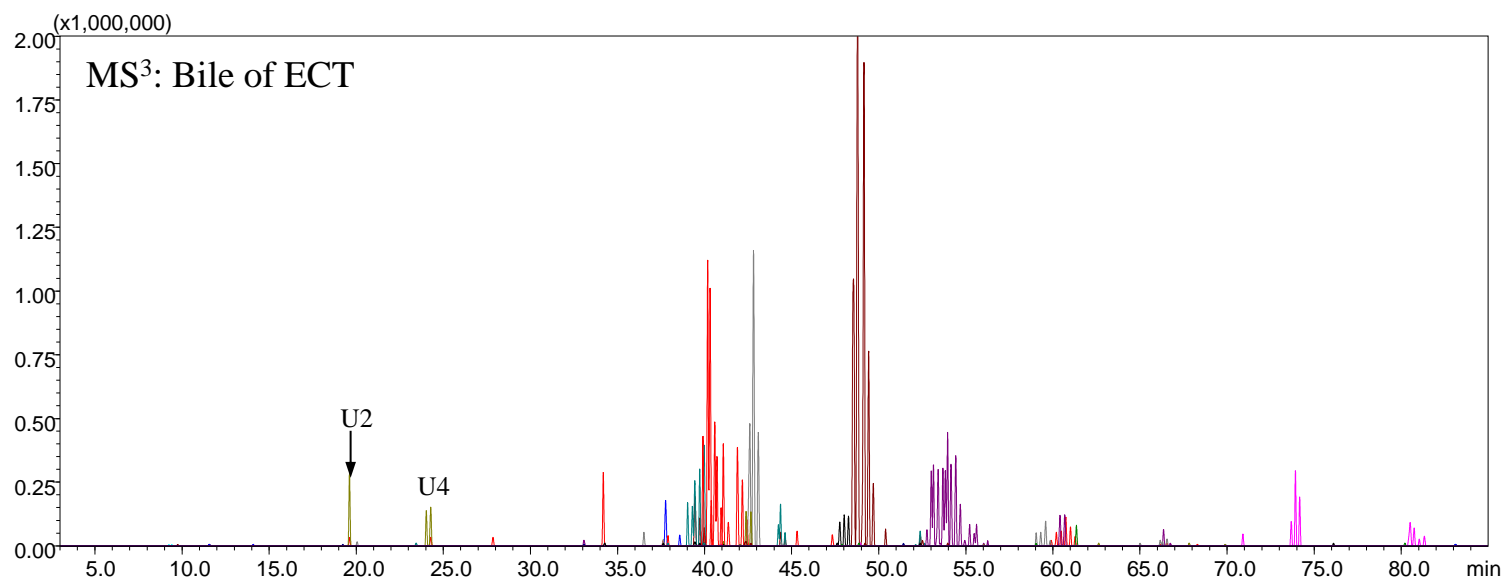
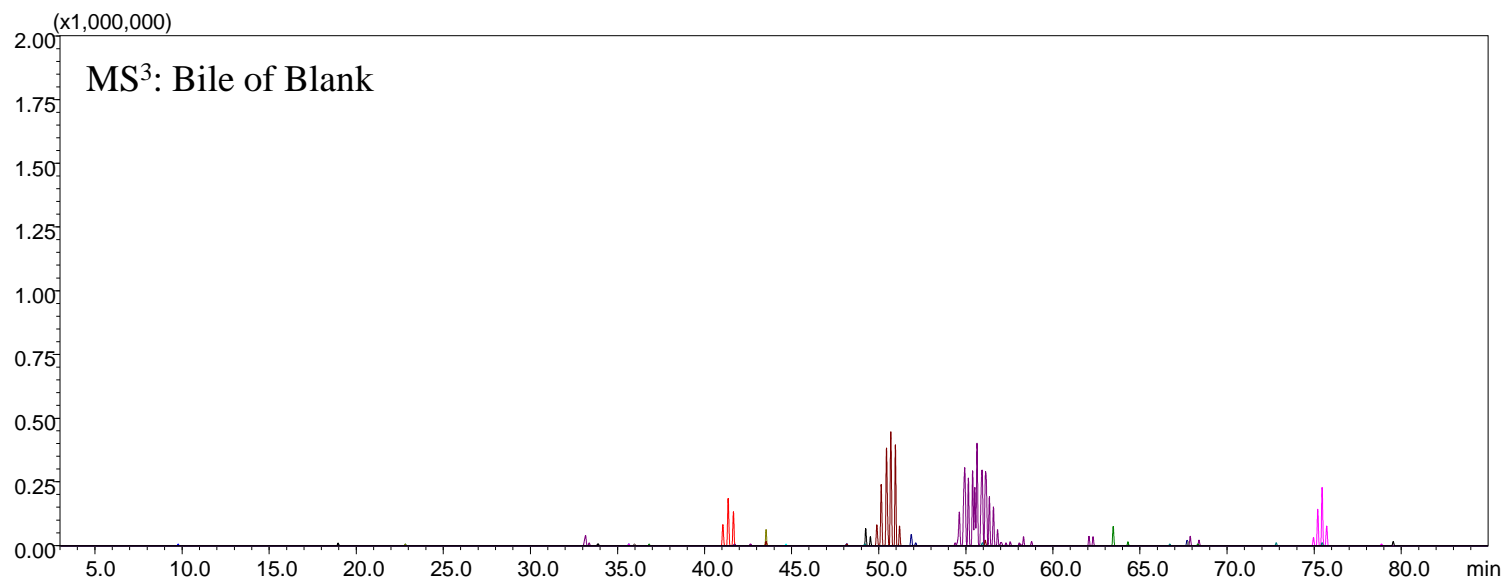


Fig. S6 (continued)

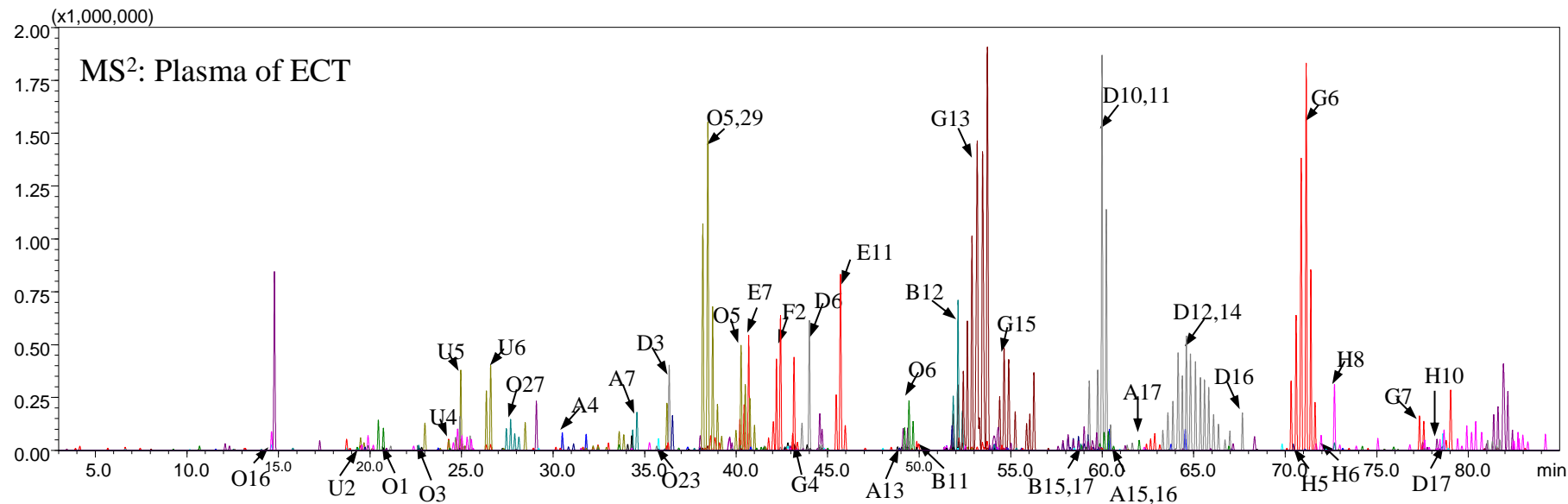
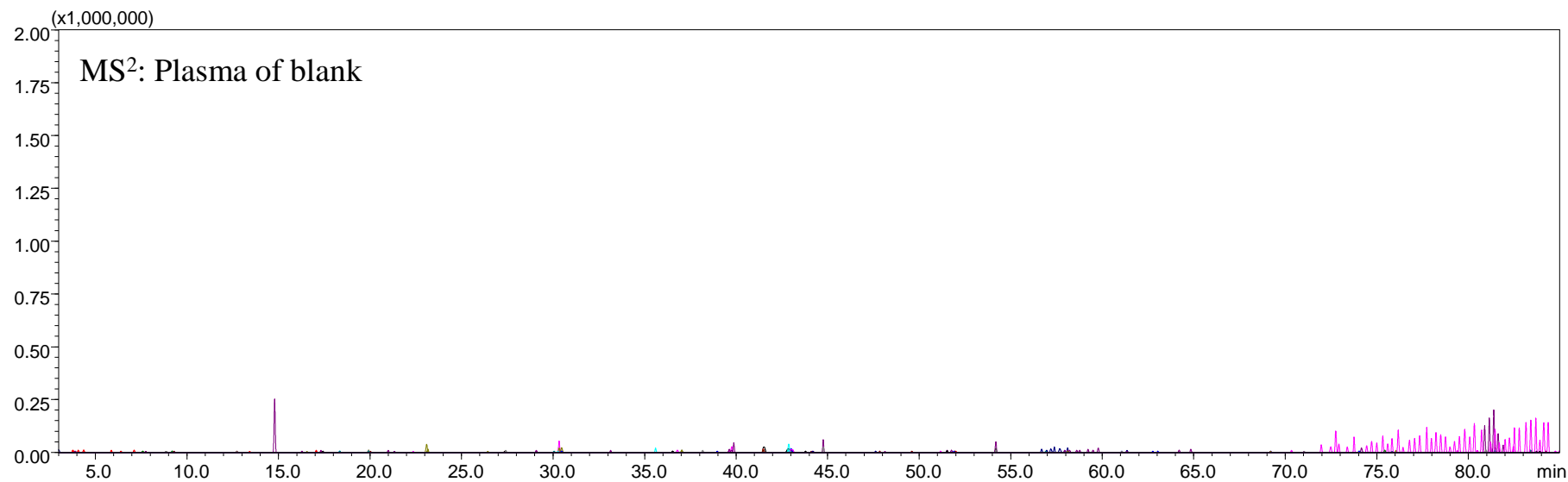


Fig. S6 (continued)

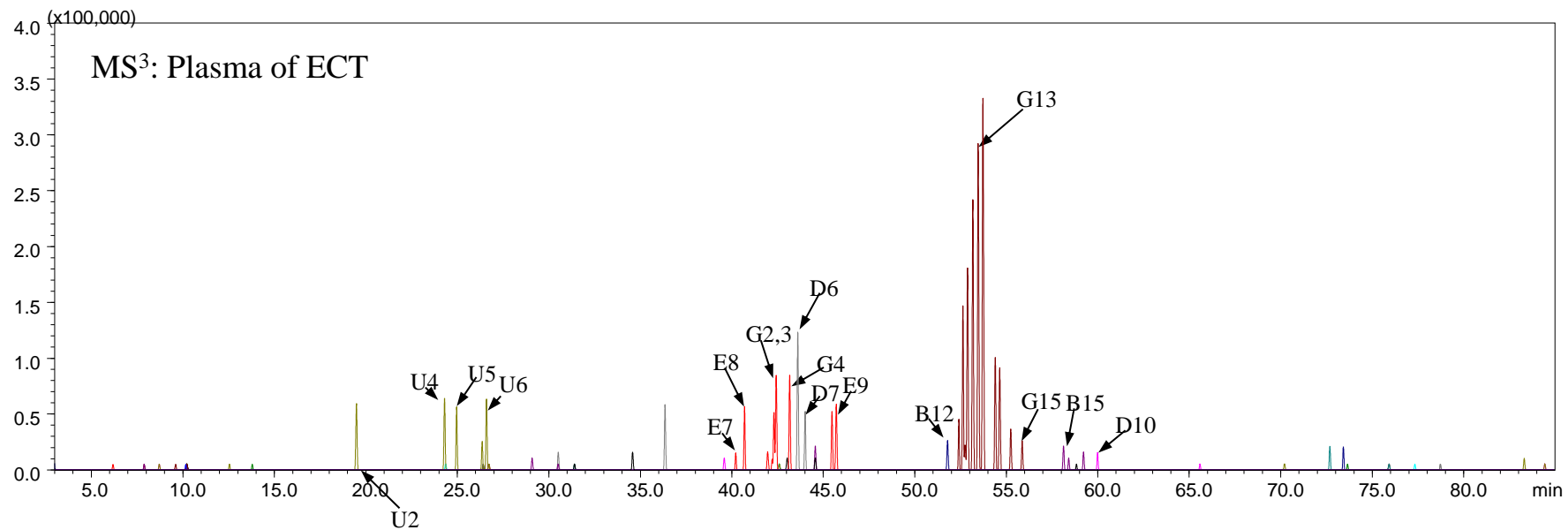
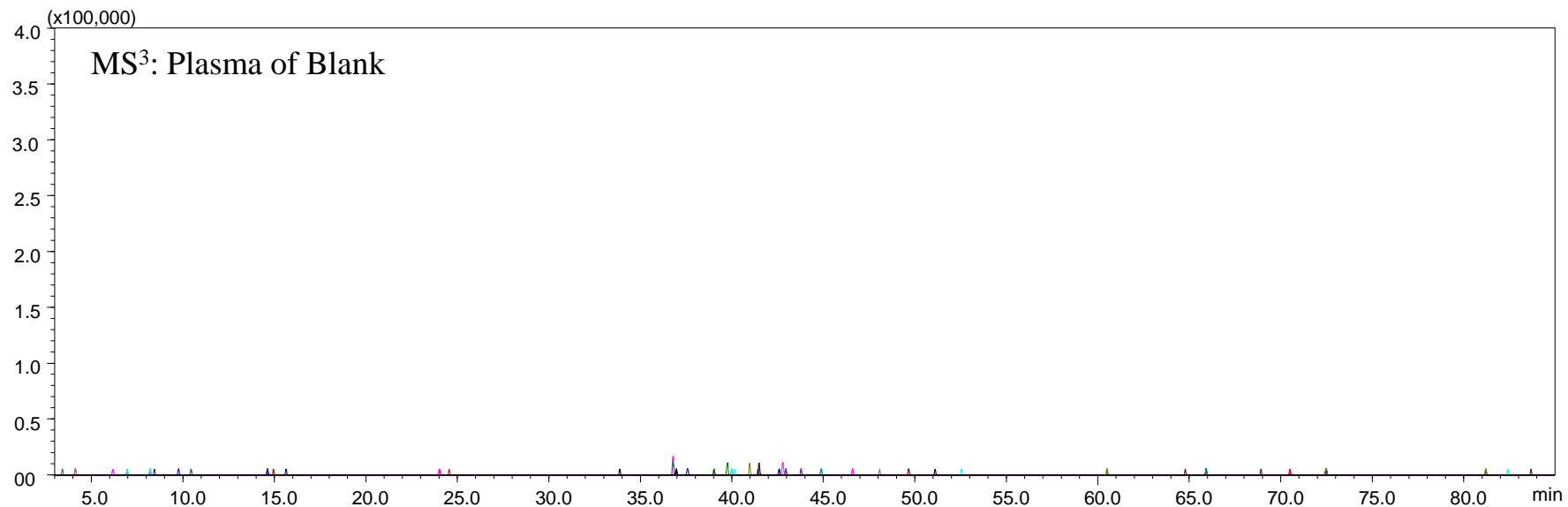


Fig. S6 (continued)