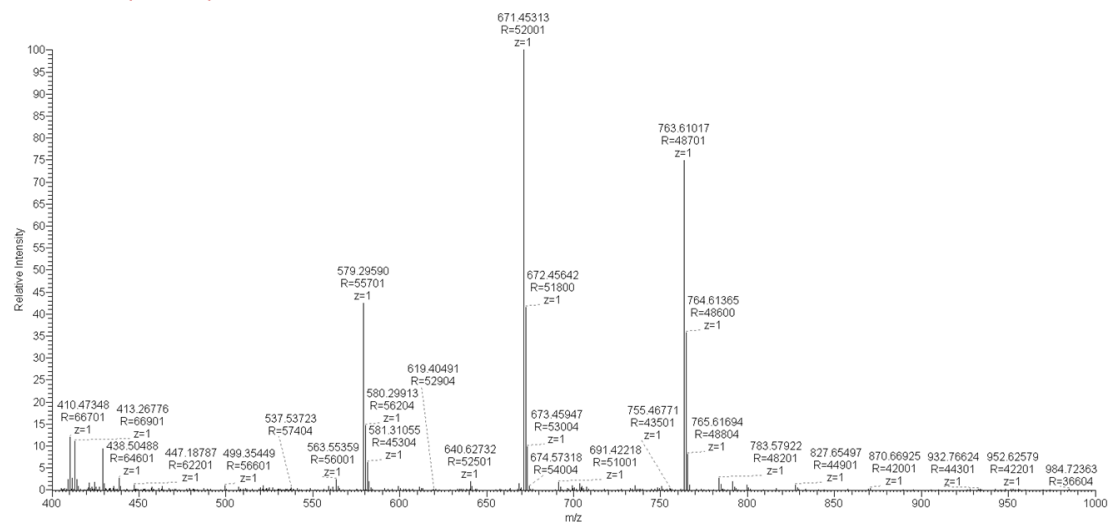


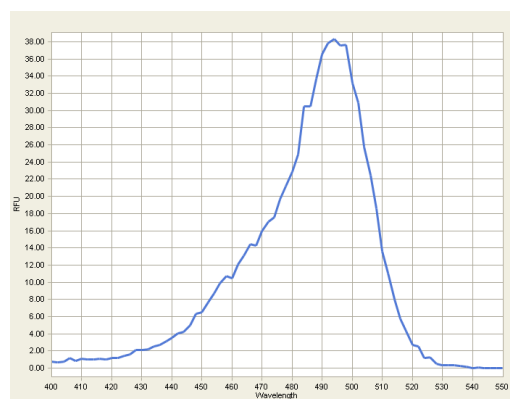
## Supplementary information for

### “A fluorescence-based method for the characterization of amino loading density on the flat surface of functionalized glass tubes”

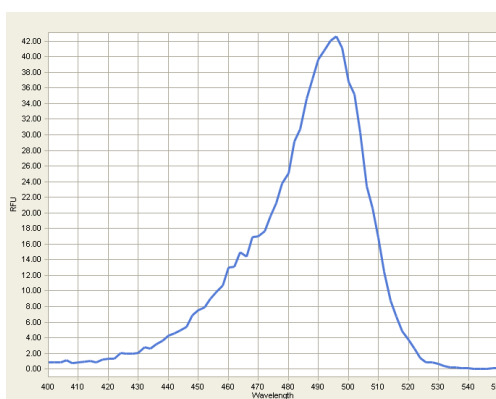
#410 IT: 8.753 ST: 1.08 CS: 1 AMW: 670.45 NL: 1.77E7  
F: FTMS + c ESI Full ms [400.00-1000.00]



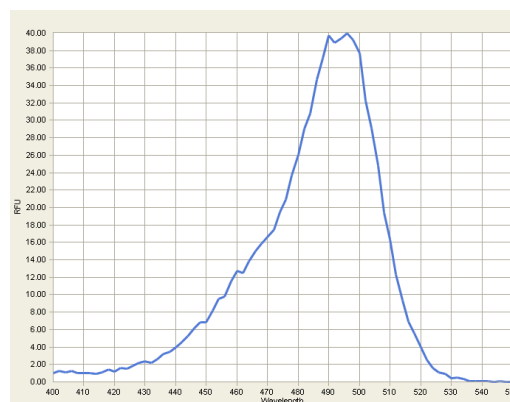
**Figure S1** HRMS of released molecules from fluorescent-labeled glass tubes. ESI mode.



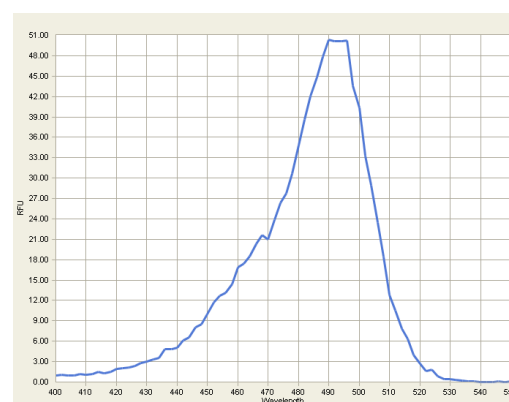
**Compound 2a**



**Compound 2b**

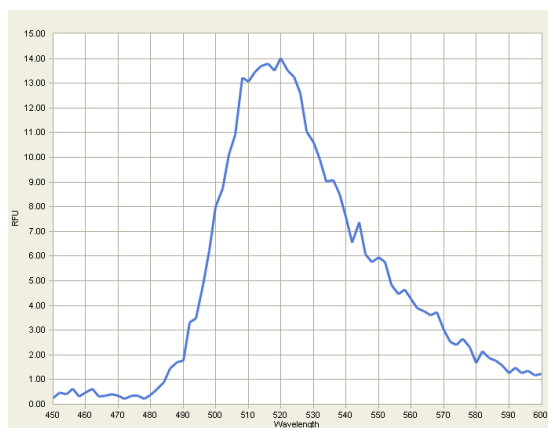


**Compound 2c**

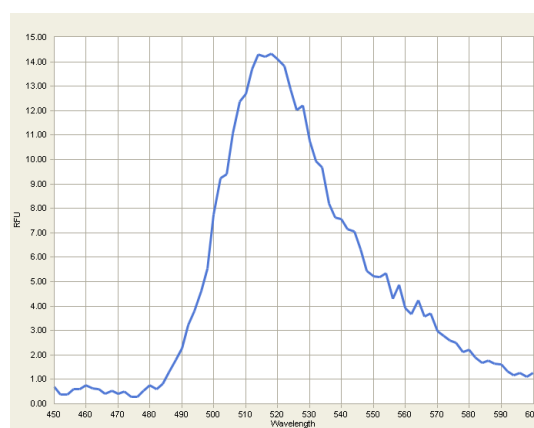


**Compound 3**

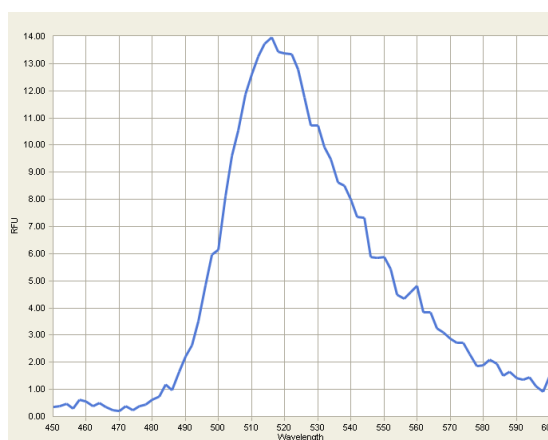
**Figure S2** Excitation spectra of the fluorescent molecules **2a**, **2b**, **2c** and **3** ( $\lambda_{em} = 600$  nm)



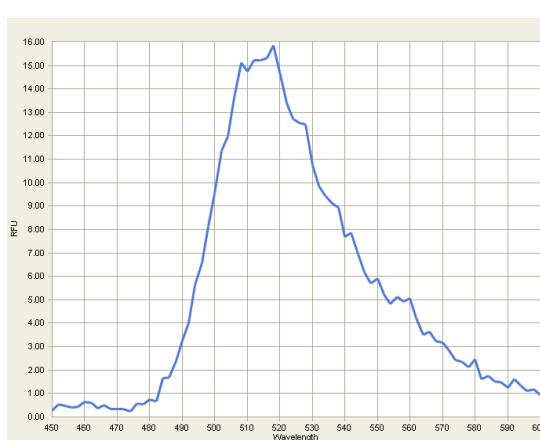
Compound 2a



Compound 2b



Compound 2c



Compound 3

**Figure S3** Emission spectra of the fluorescent molecules **2a**, **2b**, **2c** and **3** ( $\lambda_{\text{ex}} = 400 \text{ nm}$ )