

Supplemental Data

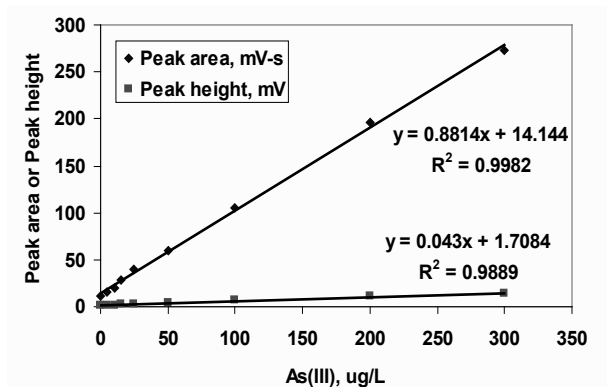


Figure S-1. Comparison of peak area and peak height based calibrations without background subtraction.

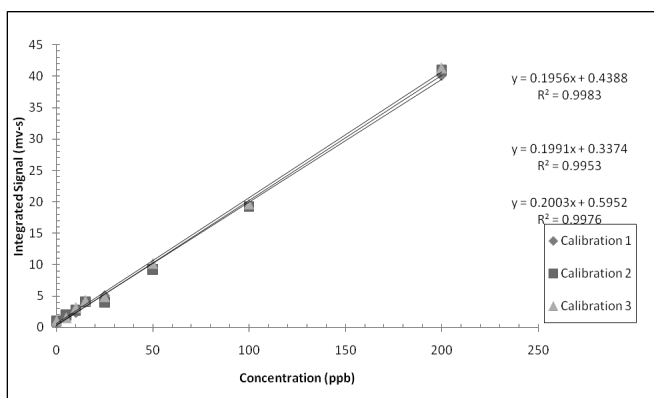
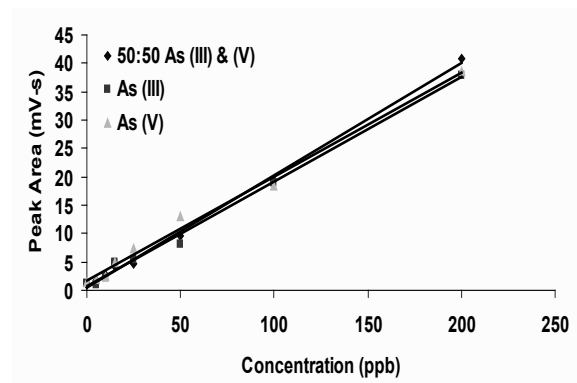


Figure S-2. Concentration calibrations in three consecutive days.



First draft 05/2010 ah rev2/6/25/2011 11:57:22 AM

Figure S-3. Concentration calibrations for arsenic species. Calibration parameters are listed in Table 1

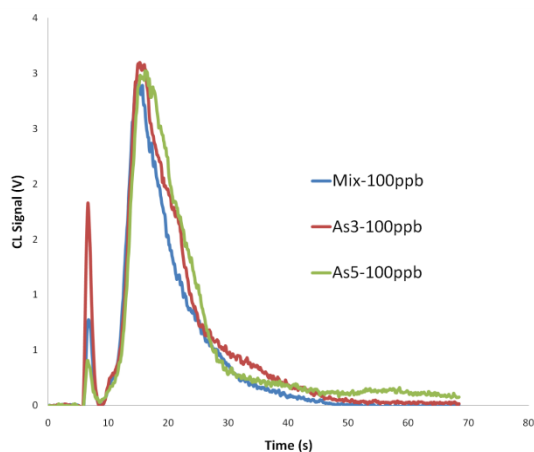


Figure S-4. Transient signal reproducibility of As(III), As(V), and the mixture superimposed upon each other

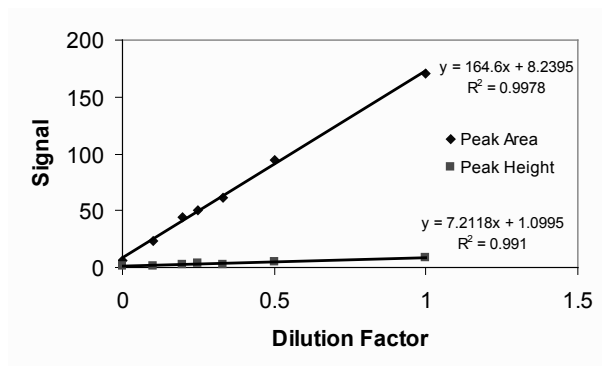


Figure S-5. Dilution experiment with a groundwater sample. Peak area shows better linearity compared to peak height. The lowest dilution factor 0.1 corresponds to 26.8 $\mu\text{g/L}$ As(total).

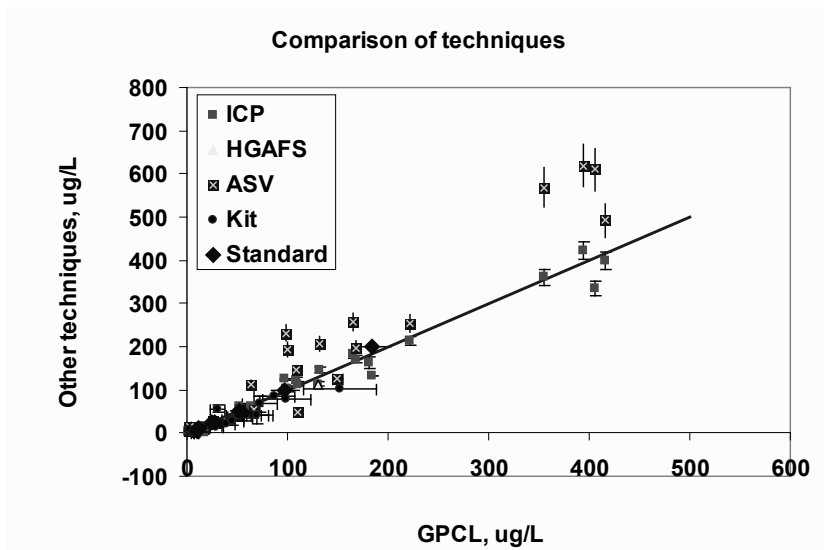


Figure S-6. Linear plot of field sample analysis comparison