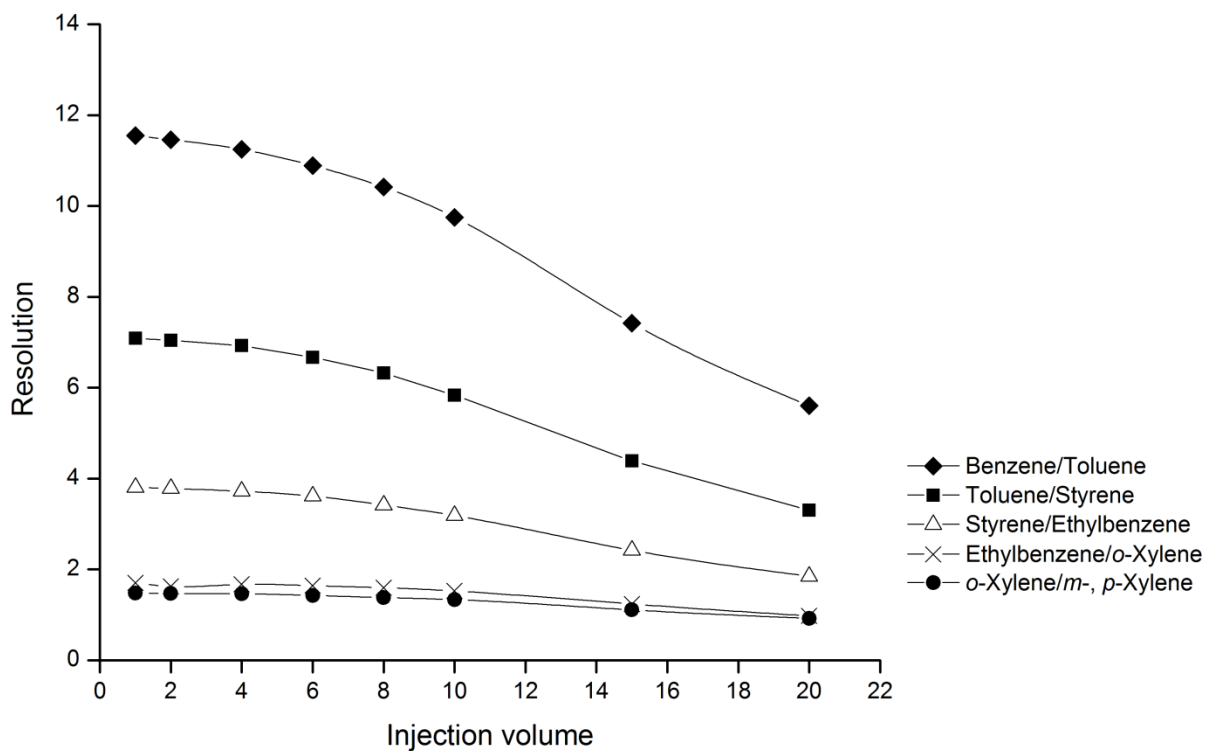


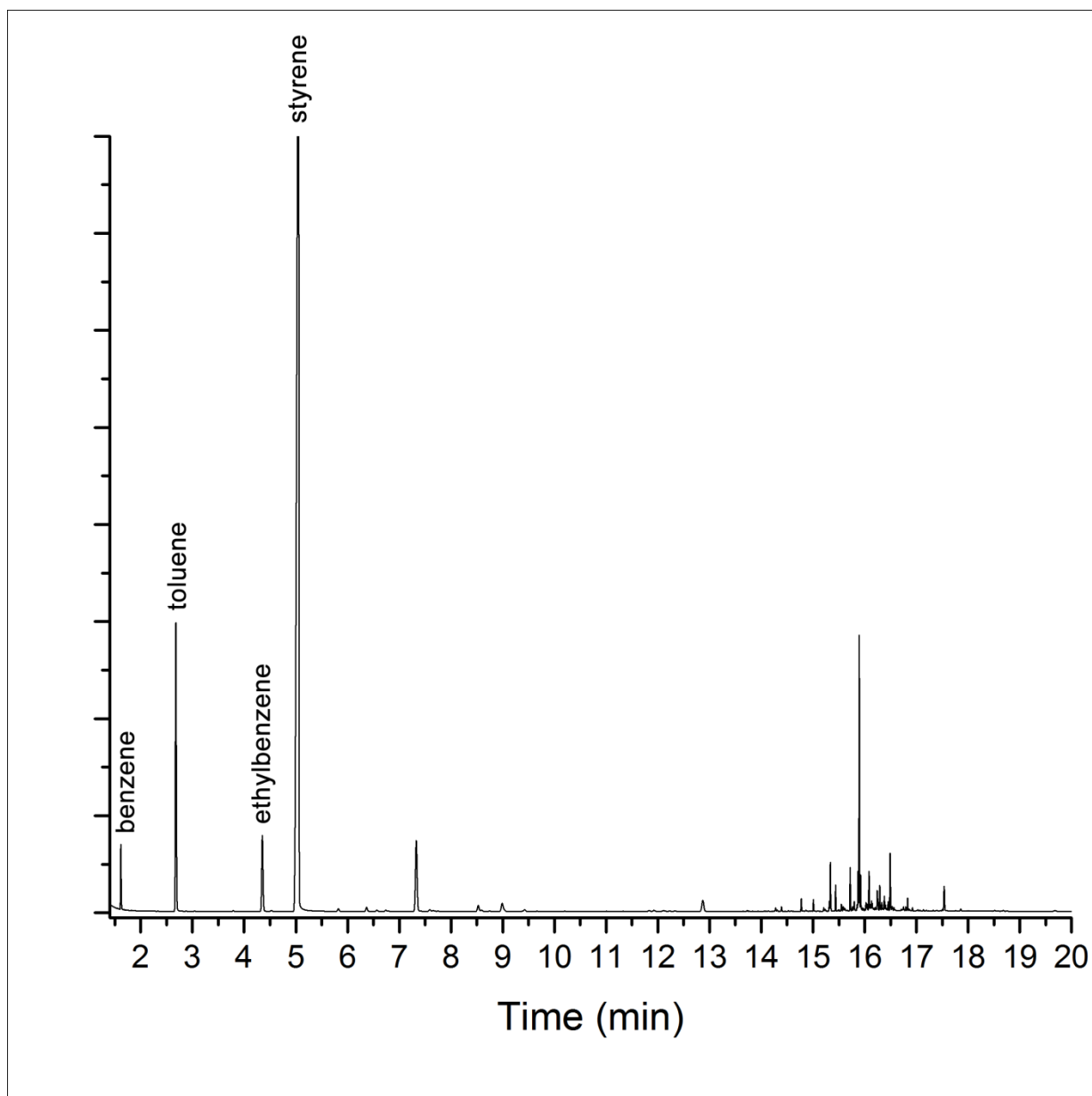
1 Supplementary figures



2

3 Fig. S1. Effect of injection volume on the resolution of a standard 2.0 mM equimolar mixture of
4 BTEXS. Separation was conducted with 60% methanol mobile phase at a flow rate of 1.2
5 mL/min. Results are the average of three independent experiments with standard deviations
6 within ± 0.12 .

7



8

9 Fig. S2. GC-FID analysis of a real wastewater sample contaminated by petroleum aromatic
10 products from a plastic pyrolysis facility. The elution times of benzene, toluene, ethylbenzene
11 and styrene were 1.6, 2.6, 4.3 and 5.0 min respectively.