

Appendix A. Supplementary Data

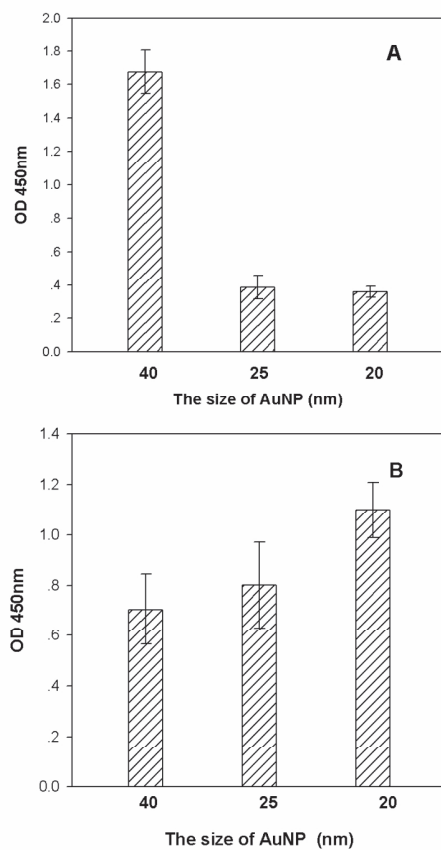


Fig. S1. Optimization of the size of AuNP. Panel A, the ODs of unconjugated HRP residue in the supernatant after centrifugation at 10,000 rpm for 40 min. Panel B, the absorbance of HRP-conjugates based on AuNP resuspended in preservation solution.
127x180mm (300 x 300 DPI)

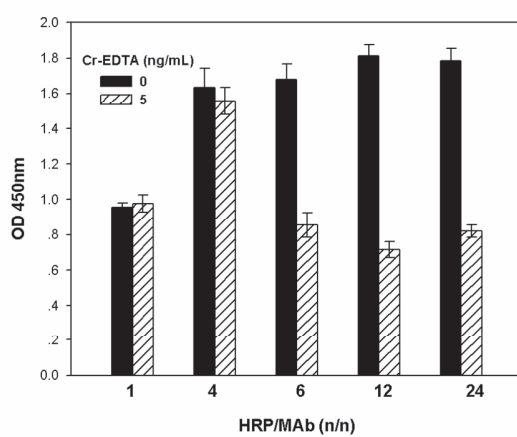


Fig. S2. The optimal ratio of HRP and MAb. The blank bars refer to the ODs of competitor-free microwell, the stripe bars mean of the reaction well containing 5 ng/mL of Cr (III)-EDTA.
112x159mm (300 x 300 DPI)

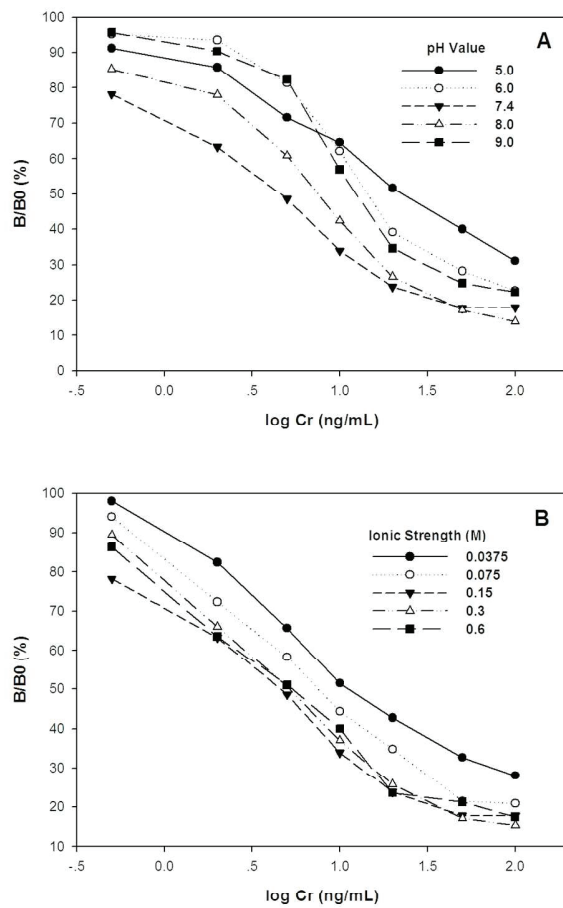


Fig. S3. Optimization of pH and ionic strength. Panel A, effects of pH on competitive ELISA. Panel B, effects of ionic strength on ELISA.
127x180mm (300 x 300 DPI)