

Supporting Information

Hierarchical Cu-Co-Ni Nanostructures Electrodeposited on Carbon Nanofiber Modified Glassy Carbon Electrode: Application to Glucose Detection

Hongyu Liu*, Xingping Lu*, Dejian Xiao*, Minxian Zhou*, Dujian Xu*, Lanlan Sun**, Yonghai Song*,¹

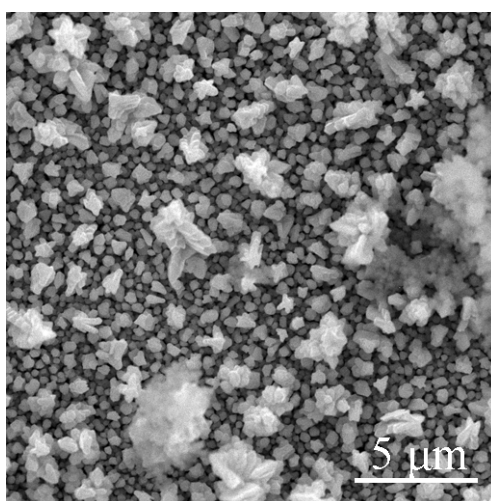


Fig. S1 SEM of Cu-Co-Ni NSs/GCE.

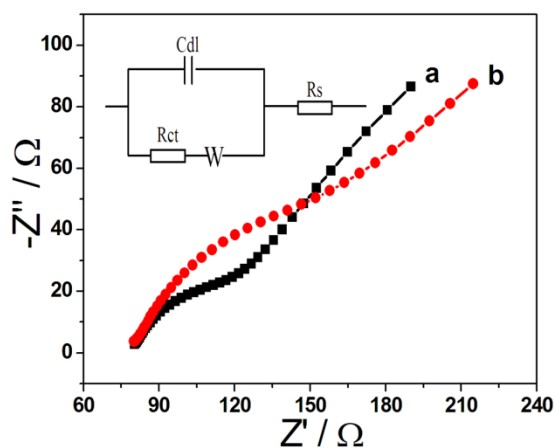


Fig. S2 EIS of Cu-Co-Ni NSs/CNFs/GCE (a) and Cu-Co-Ni NSs/GCE (b).

¹ Corresponding author: Tel/Fax: +86 791 88120862. E-mail: yhsonggroup@hotmail.com (Y. Song).