

Facile synthesis of hierarchical MCM-41 spheres with ultrahigh surface area and its application for removal of methylene blue from wastewater

Qishu Qu,* Zuli Gu

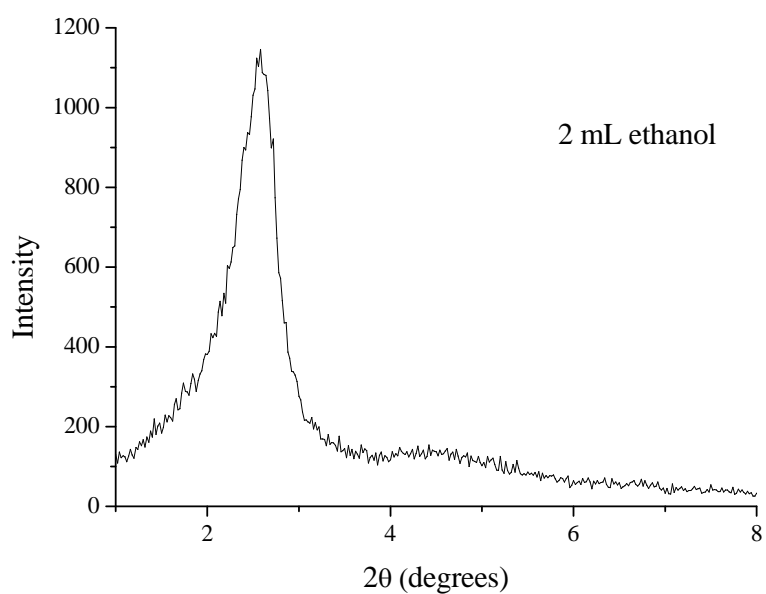


Figure S1. Small angle XRD patterns of mesoporous silica prepared using 2 mL ethanol in the initial mixture.

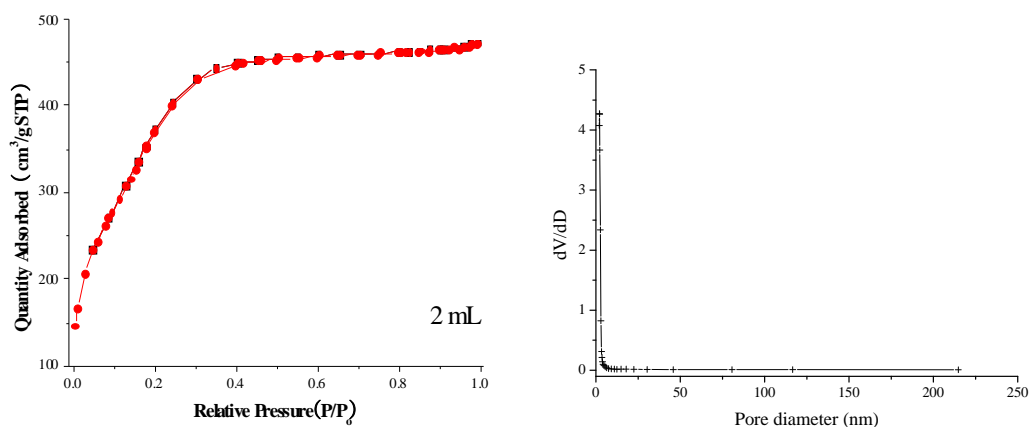


Figure S2. N₂ adsorption–desorption isotherms and pore distribution of mesoporous silica prepared using 2 mL ethanol in the initial mixture.

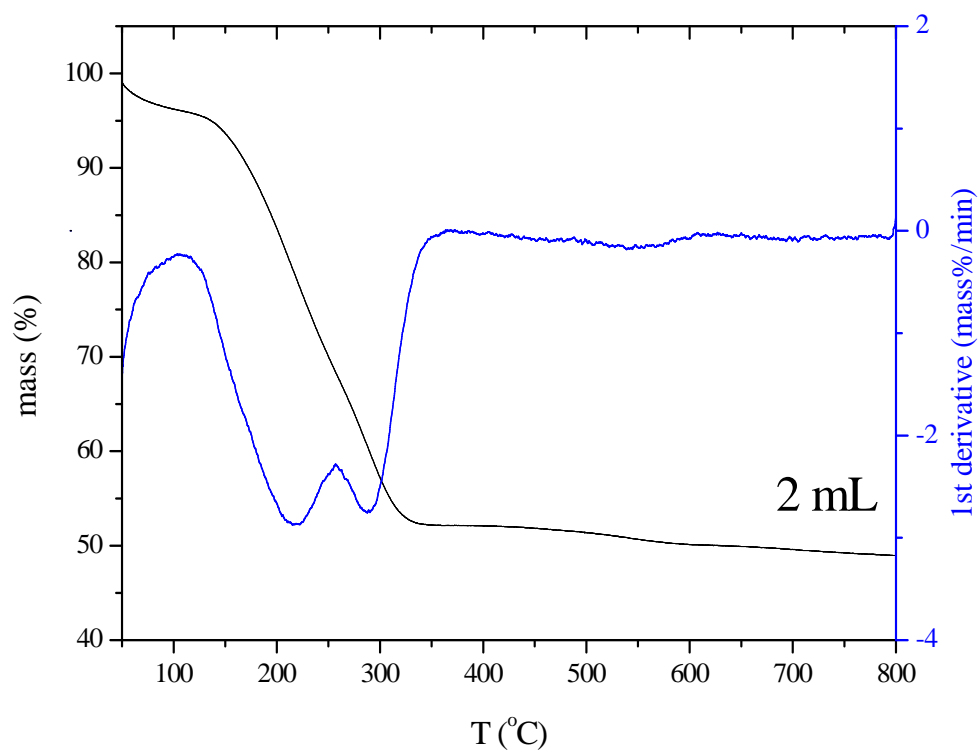


Figure S3. TG and DTG curves of mesoporous silica prepared using 2 mL ethanol in the initial mixture.

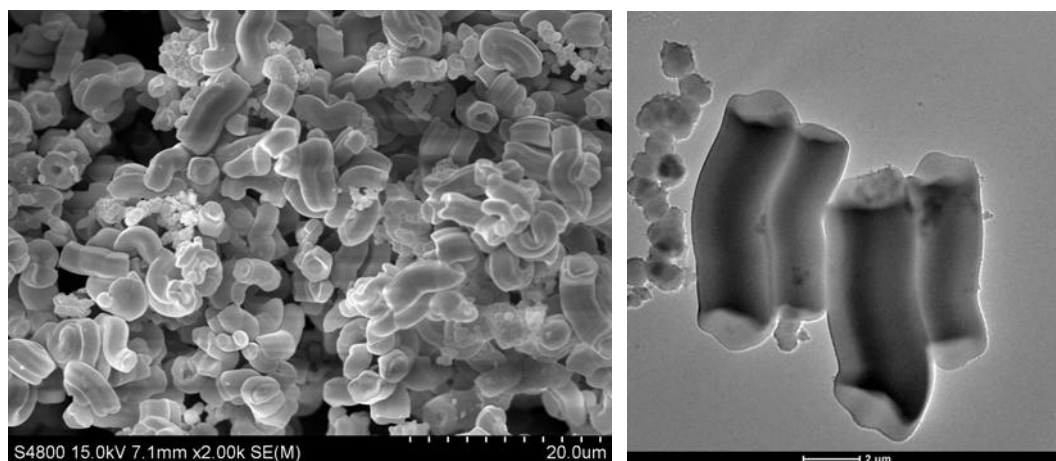


Figure S4. SEM and HRTEM images of mesoporous silica particles prepared using 2 mL ethanol in the reactant.