

Fig.S1 Representative gel electrophoresis result of total RNA samples. M: DNA marker, 1-4 represents RNA samples extracted from Huh7, Huh7.5, H20986 and JFH1(HCV) infected Huh7.5 cells, respectively.

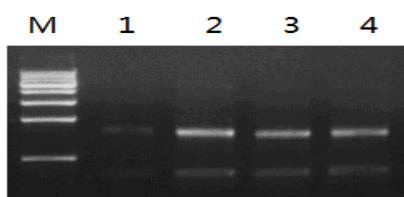


Fig.S2 Agarose gel electrophoresis and ethidium bromide staining of a 259 bp product specific for VEGF mRNA in Huh7 cells amplified by qPCR

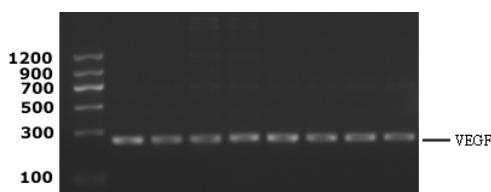


Fig.S3 The VEGF mRNA detection in Huh7 cells treated with a specific inhibitor (50 μ M Cox2) for 24 hours (blue sample) or not (red sample) based on dual molecular beacons.

