

# Supplemental data

## **Development of the enantiospecific and chemoselective methods for determination of praeruptorin A enantiomers and their metabolites in rat plasma using chiral and achiral LC-MS/MS**

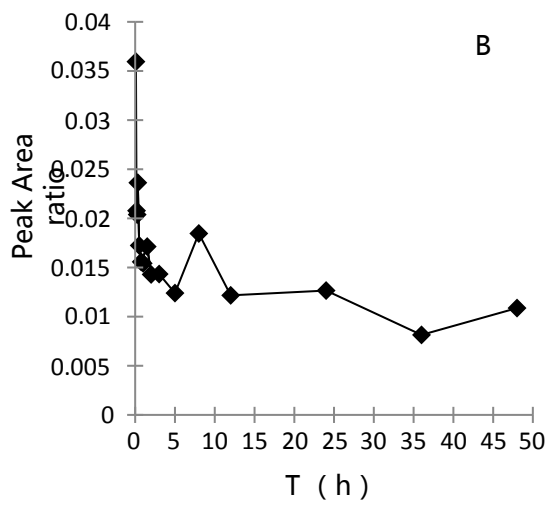
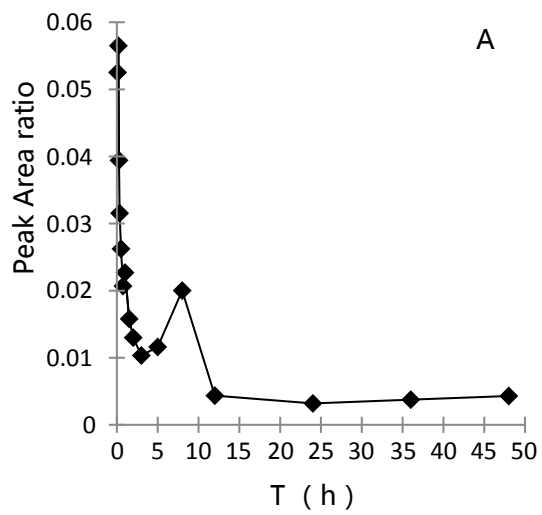
Yuelin Song <sup>a,b#</sup>, Wanghui Jing <sup>a#</sup>, Pengfei Tu <sup>b,c</sup>, Yi-Tao Wang <sup>a\*</sup>

### **Figure Legends**

**Figure S1** Mean (+ S.E.) plasma peak area ratio-time profiles of *d*PA after oral administration of PA (A) and *d*PA (B) (n = 6).

**Figure S2** Mean (+ S.E.) plasma peak area ratio-time profiles of D1 after oral administration of PA (A) and *d*PA (B) (n = 6).

**Figure S3** Mean (+ S.E.) plasma peak area ratio-time profiles of L3 after p.o. administration of PA (A) and *l*PA (B) (n = 6).



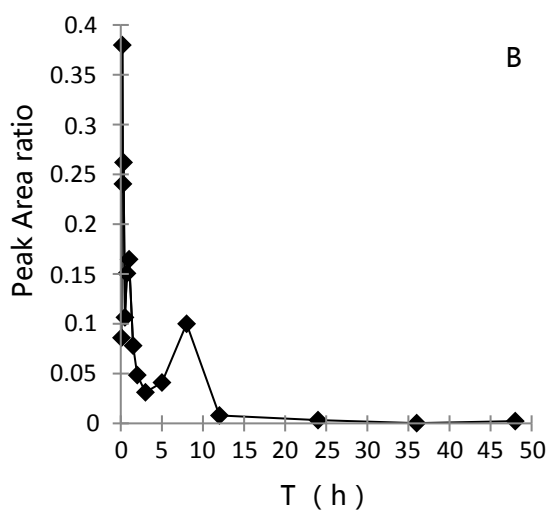
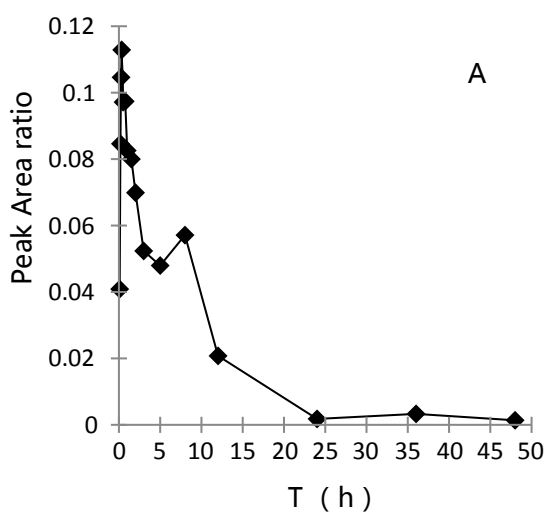


Figure S2

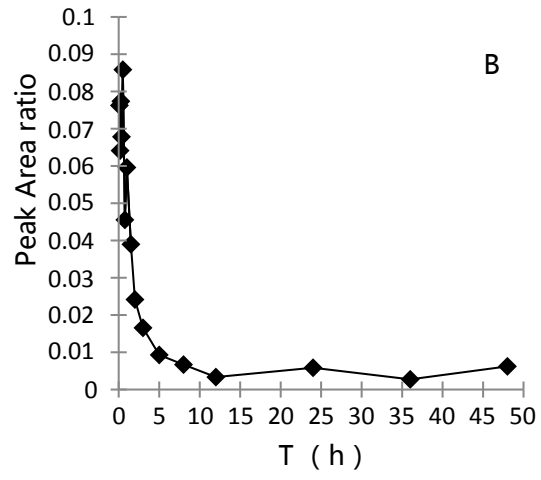
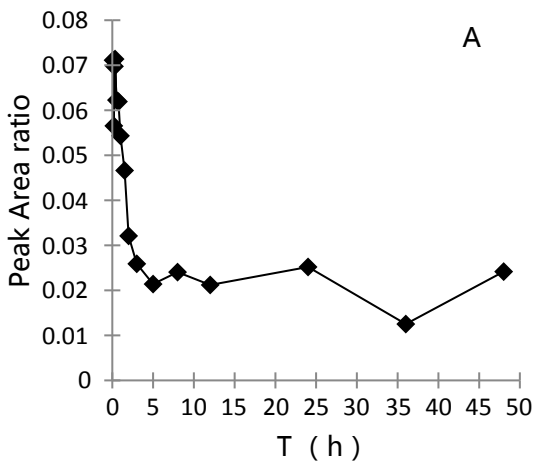


Figure S3