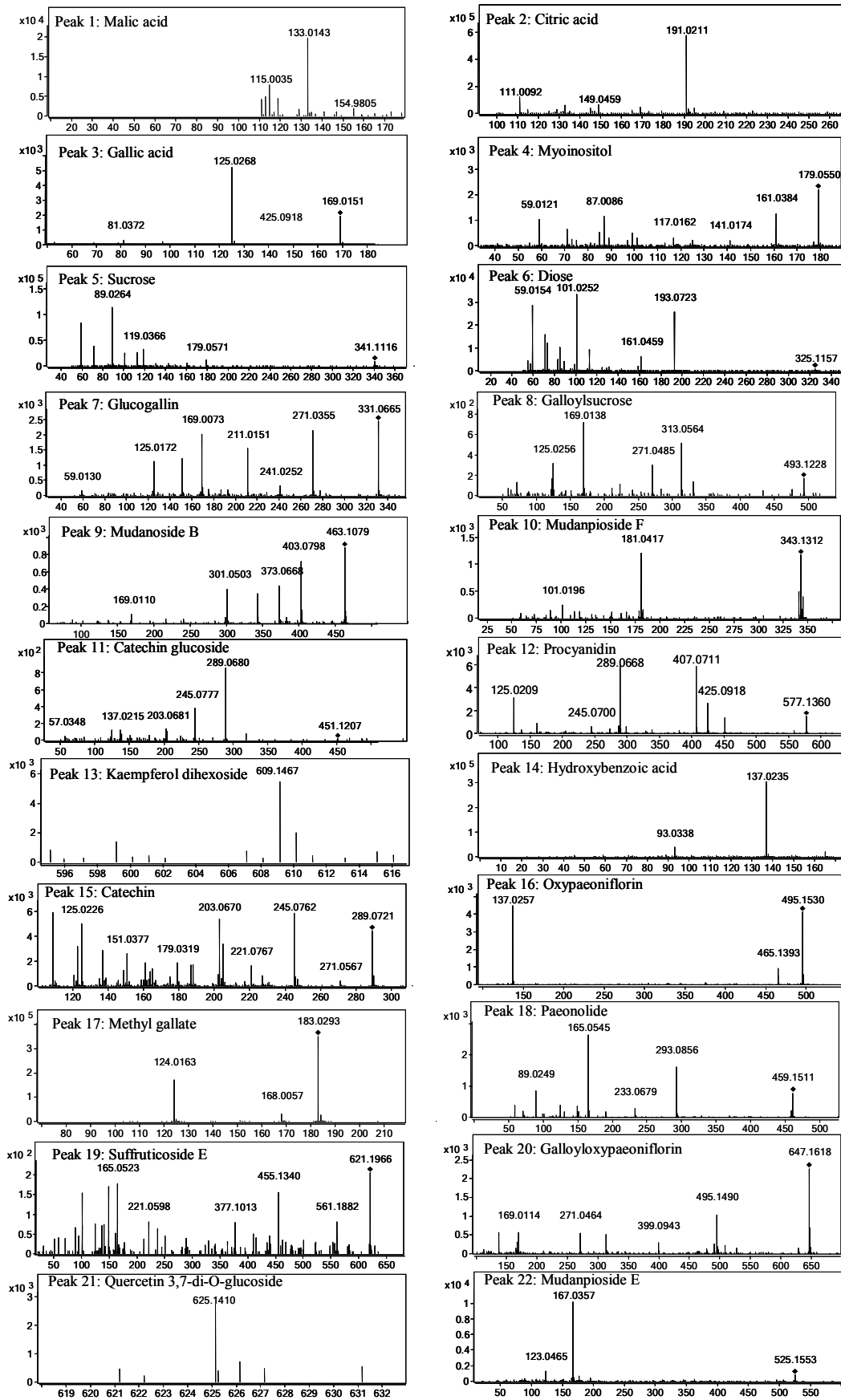


## Supplementary information

**Figure S1** The MS or MS/MS spectra of identified metabolites in the root bark extracts from tree peony.

**Figure S2** The MS/MS spectra of galloylpaeoniflorin at the different collision energies: (A) 10 eV, (B) 20 eV, (C) 30 eV and (D) 40 eV.

Figure S1



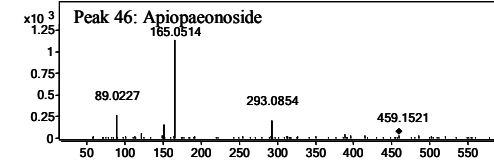
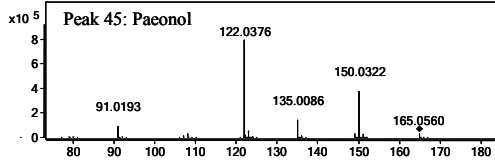
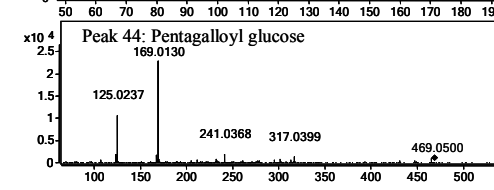
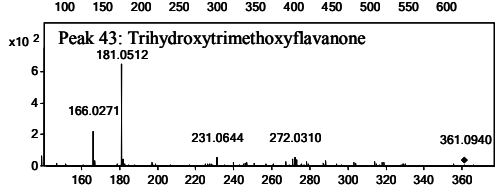
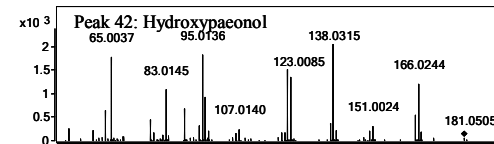
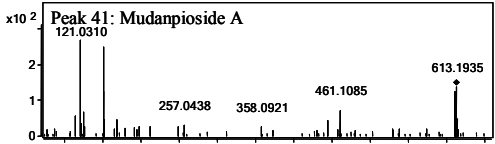
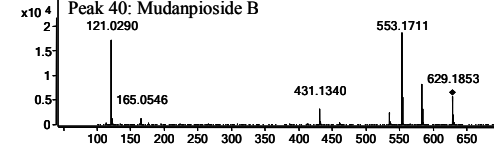
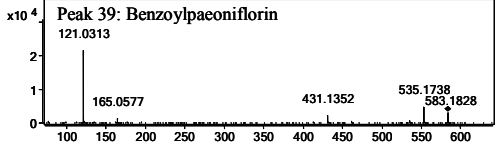
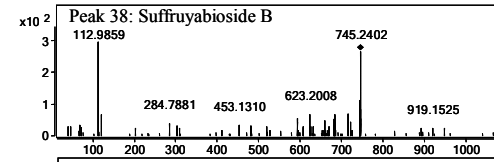
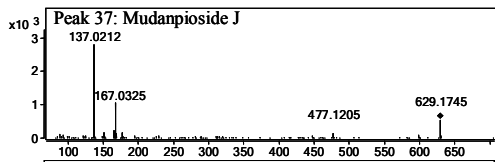
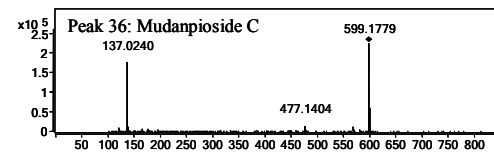
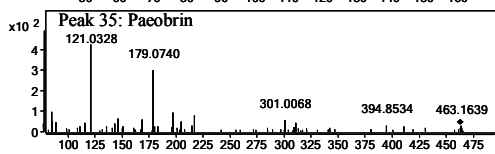
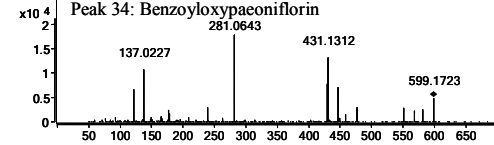
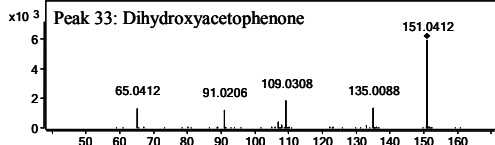
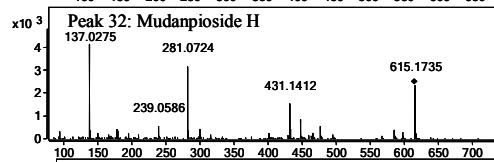
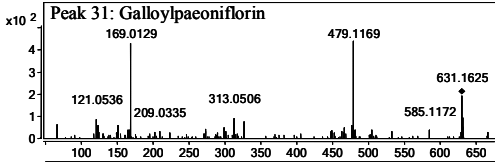
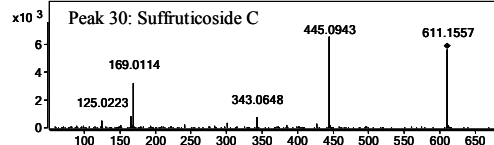
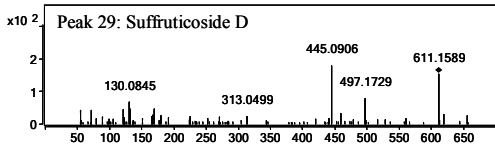
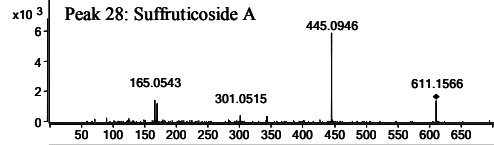
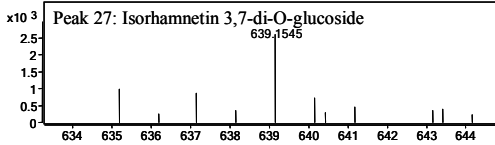
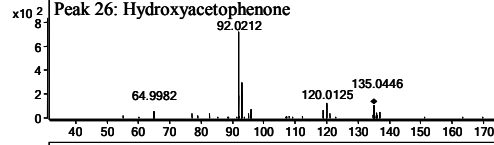
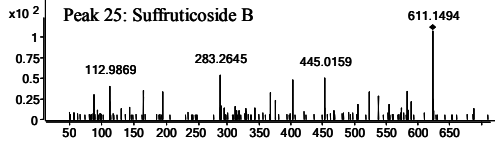
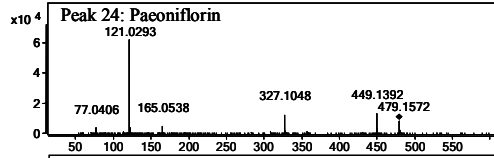
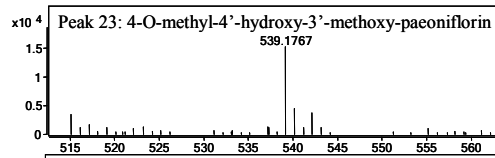


Figure S2

