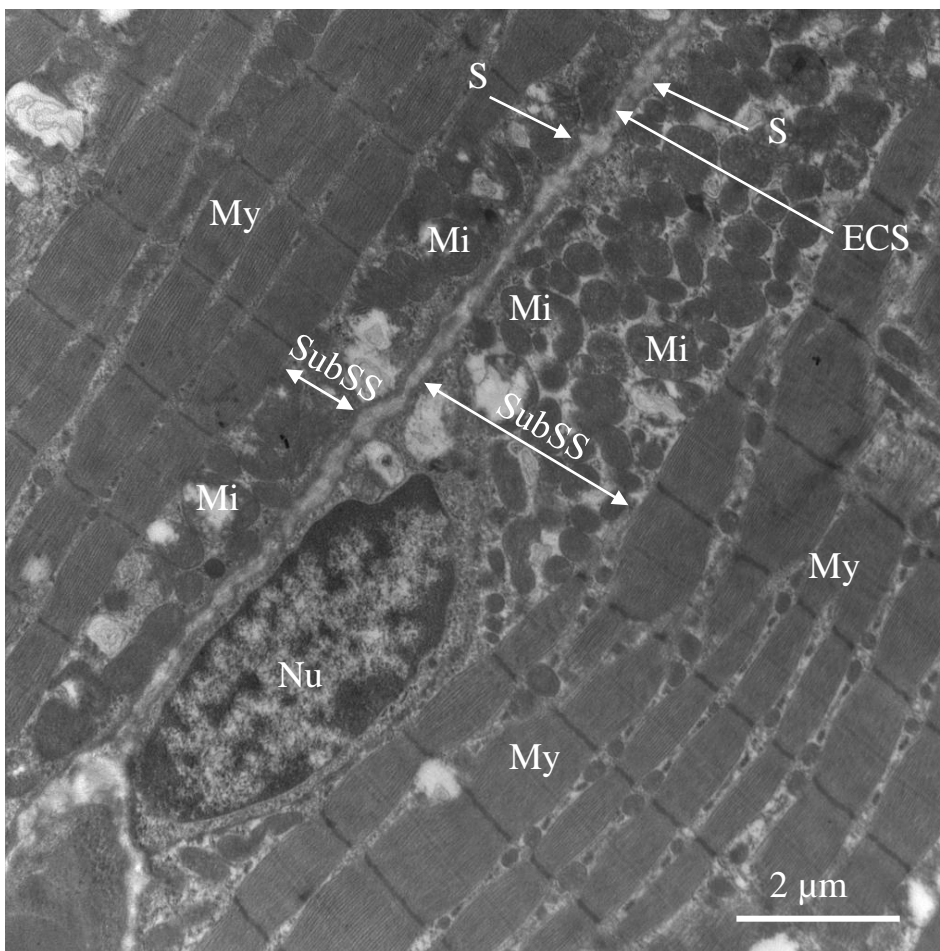


Figure S2: Autofluorescence of deep ultraviolet excited rat skeletal muscle fibre sub-types. Chagnot et al.

Electron microscopy of rat EDL muscle



Longitudinal section of rat EDL muscle showing 2 muscles fibres separated by the extracellular space showing their respective subsarcolemmal spaces full of mitochondria.

Nu: Nucleus, My: Myofibril, Mi: Mitochondria, SubSS: Subsarcolemmal space, S: Sarcolemma, ECS: Extracellular space (Photo T. Astruc)