

Fig. S1 The targeted MS/MS spectrum of **M1** at CE of 30 eV in positive ion mode

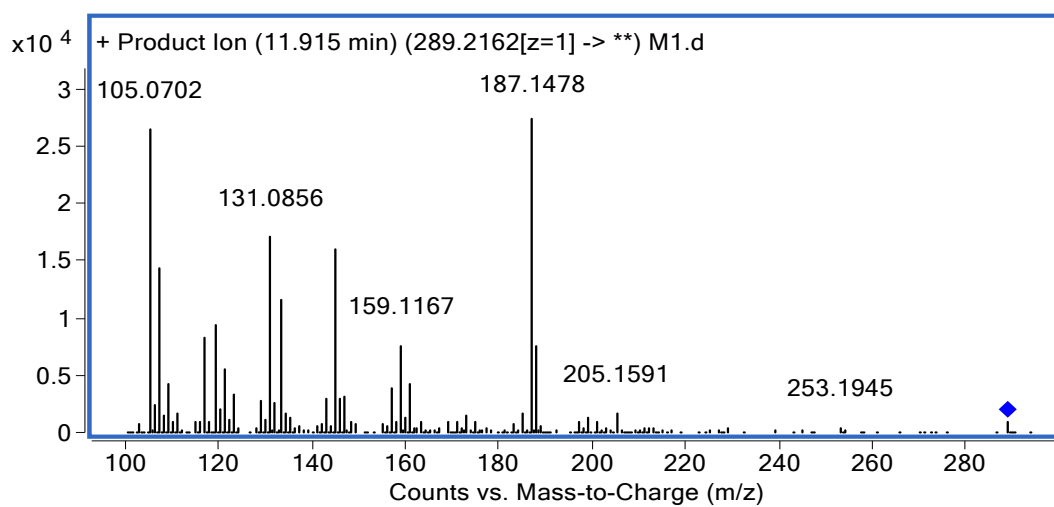


Fig. S2 The targeted MS/MS spectrum of **M2** at CE of 30 eV in positive ion mode

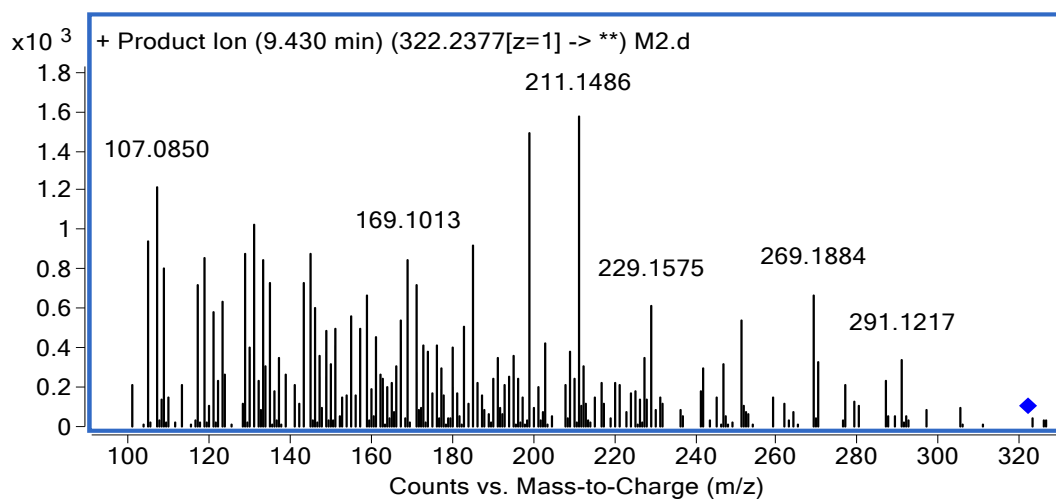


Fig. S3 The targeted MS/MS spectrum of **M3** at CE of 30 eV in positive ion mode

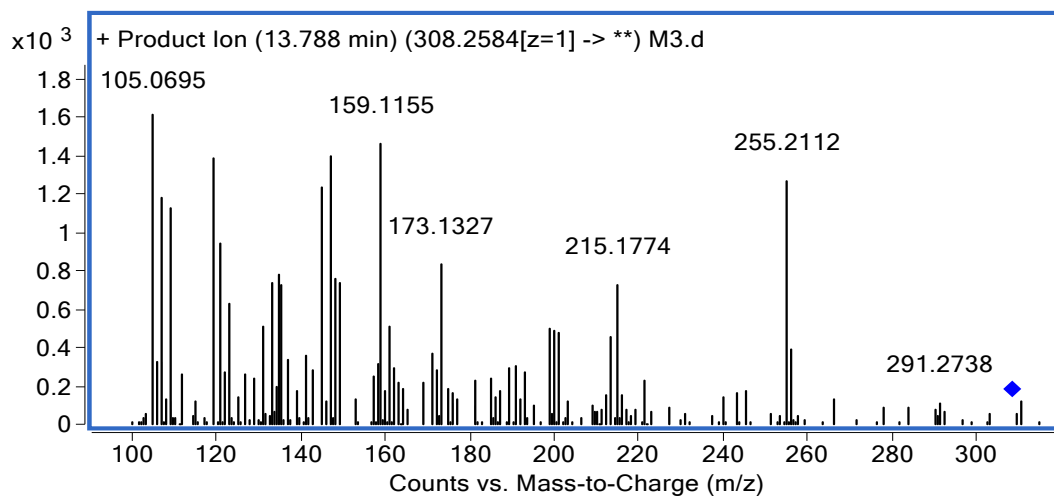


Fig. S4 The targeted MS/MS spectrum of **M4** at CE of 30 eV in positive ion mode

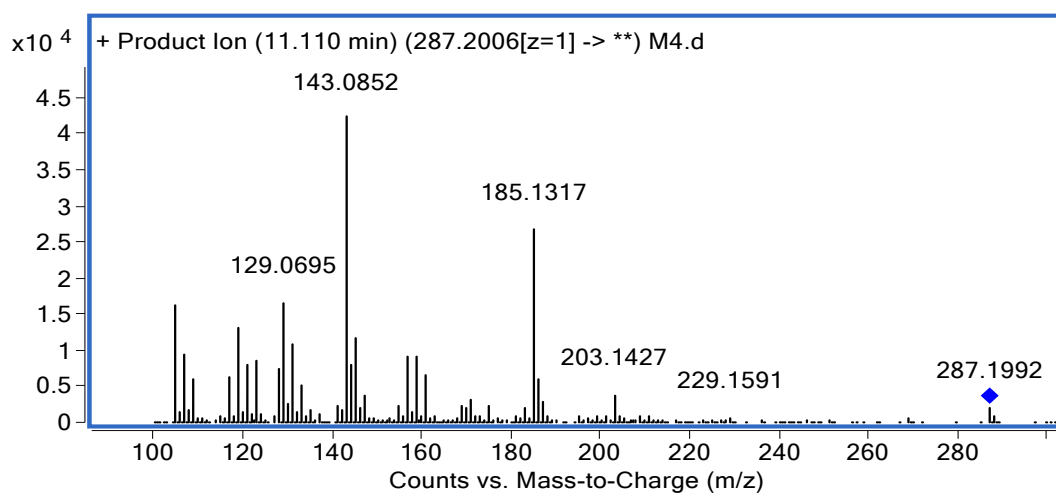


Fig. S5 The extraction ion chromatogram of **S1** in negative ion mode

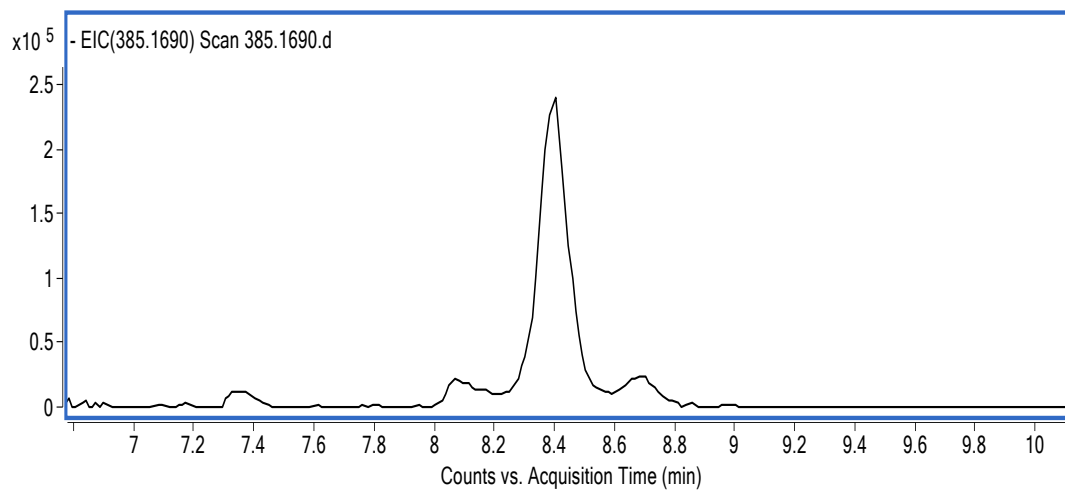


Fig. S6 The extraction ion chromatogram of **M1** in positive ion mode

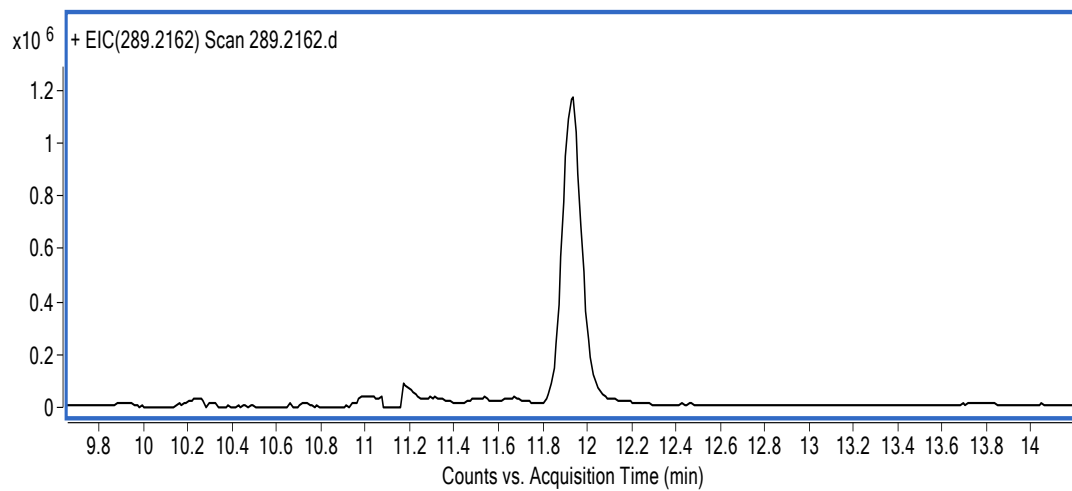


Fig. S7 The extraction ion chromatogram of **M2** in positive ion mode

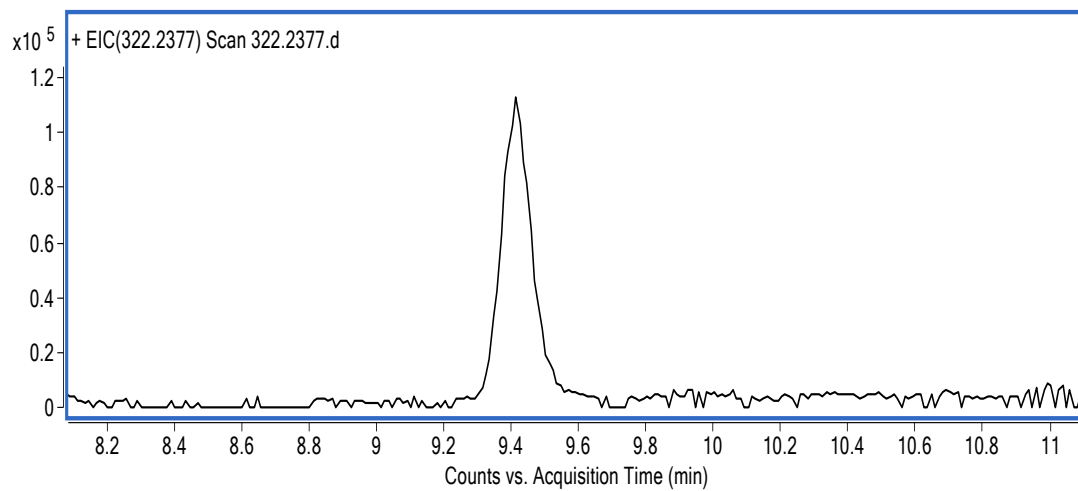


Fig. S8 The extraction ion chromatogram of **M3** in positive ion mode

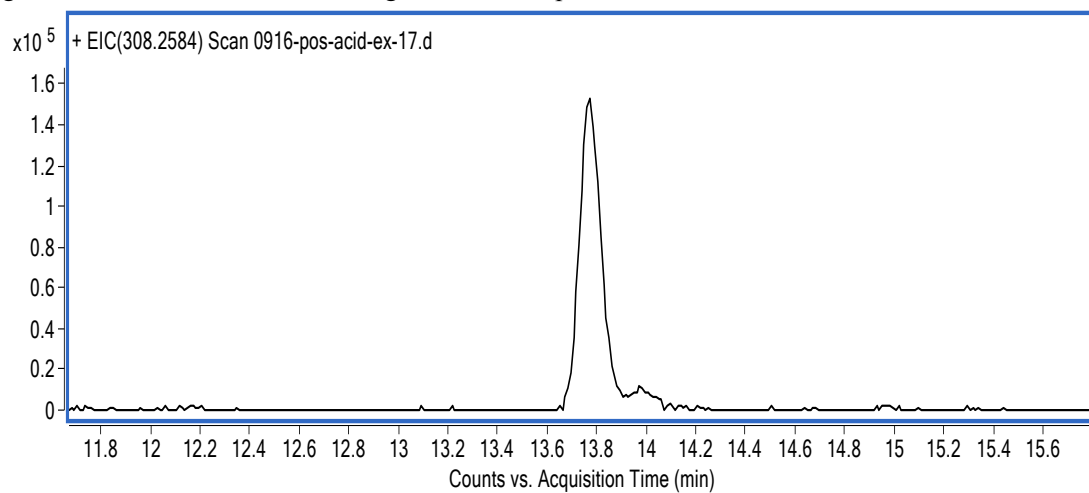


Fig. S9 The extraction ion chromatogram of **M4** in positive ion mode

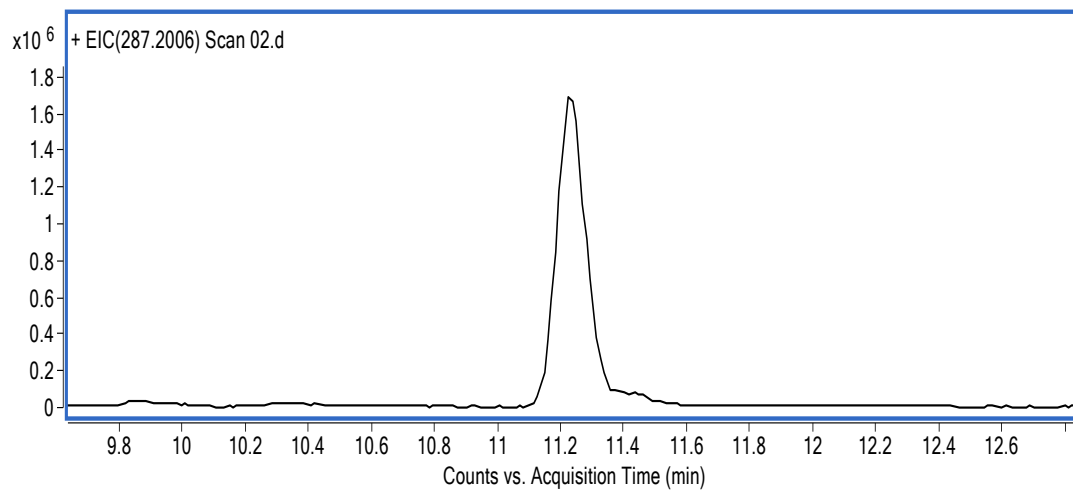


Fig. S10 Electron ionization mass spectrum of bis-O-TMS derivative of **M1**

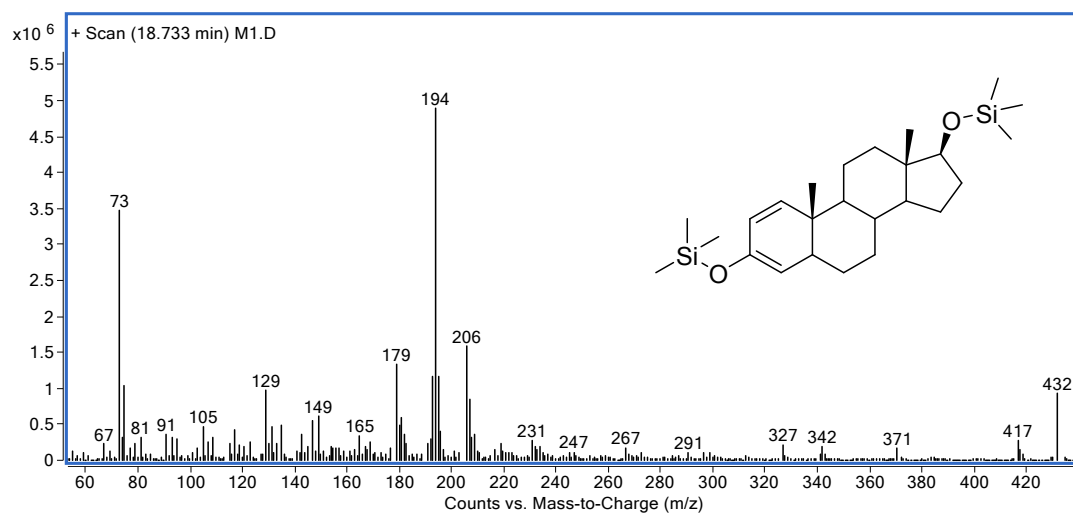


Fig. S11 Electron ionization mass spectrum of bis-O-TMS derivative of **M2**

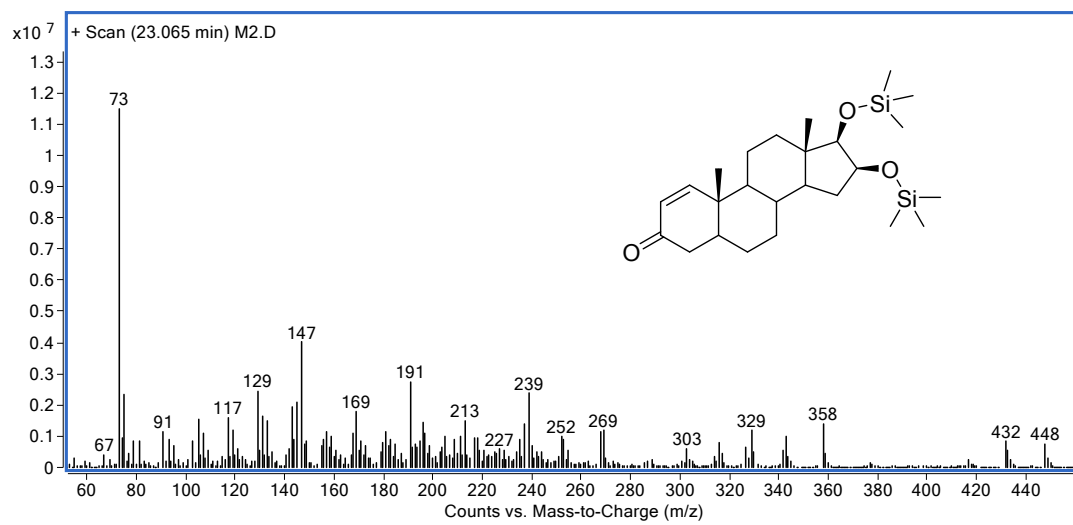


Fig. S12 Electron ionization mass spectrum of bis-O-TMS derivative of **M3**

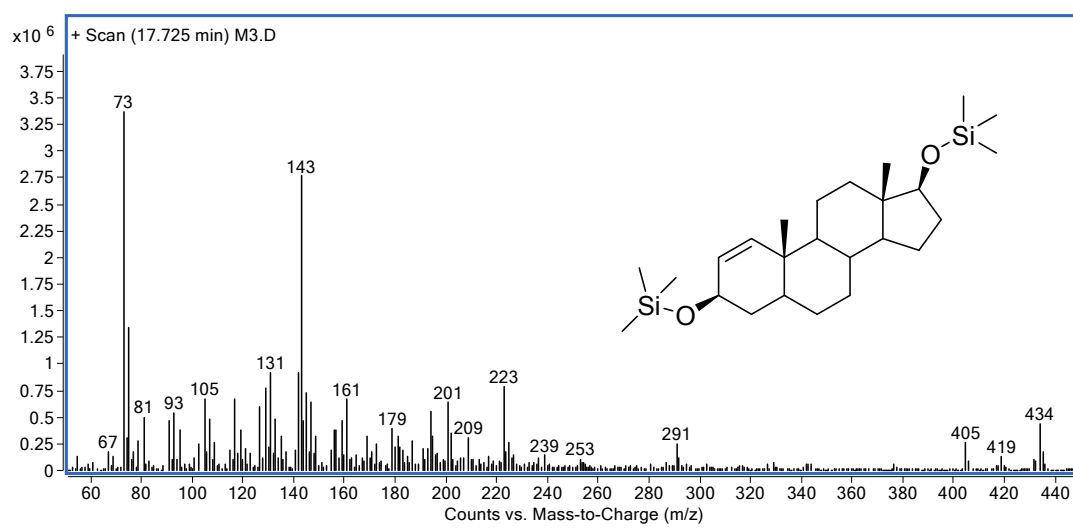


Fig. S13 Electron ionization mass spectrum of bis-O-TMS derivative of **M4**

