

## Electronic Supplementary Information

### Separation of micro-phytoplankton from inorganic particulate in Antarctic seawater (Ross Sea) for the determination of Cd, Pb and Cu: optimization of the analytical methodology

C. Truzzi, A. Annibaldi, C. Finale, G. Libani, T. Romagnoli, G. Scarponi, S. Illuminati<sup>a</sup>.

#### Notes and references

<sup>a</sup> Department of Life and Environmental Sciences, Università Politecnica delle Marche, Via Breccie Bianche 60131 Ancona, Italy.

†Electronic Supplementary Information (ESI) available: ESI: examples of phytoplankton cells together with a picture that shows the diameter of the capillary used to suck phytoplankton cells.

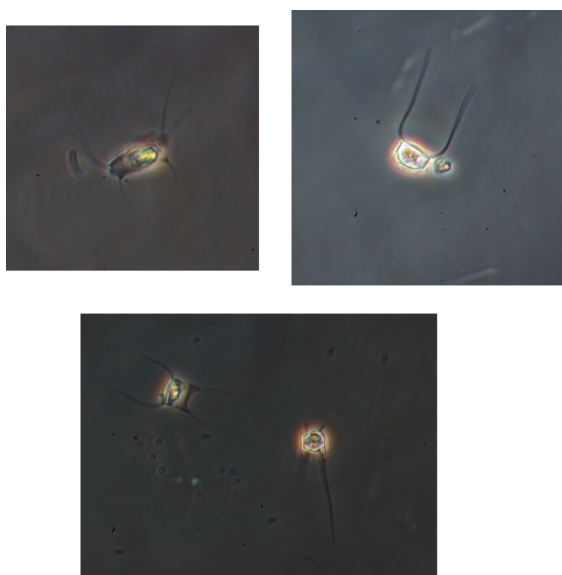


Figure S1 *Chaetoceros sp.*

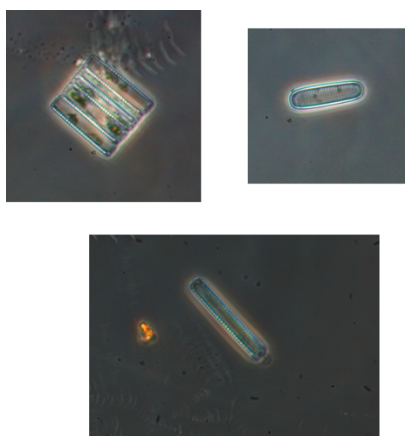


Figure S2 *Fragilariopsis curta*

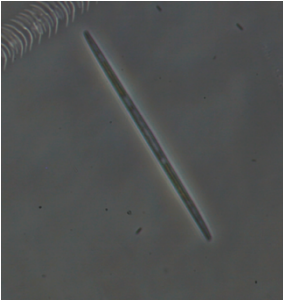


Figure S3 *Pseudo-nitzschia*

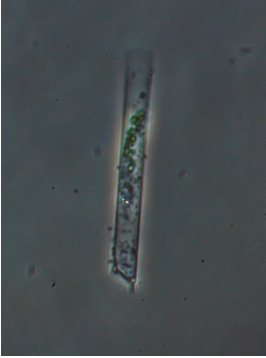


Figure S4 *Rhizosolenia* sp.



Figure S5 *Rhizosolenia*

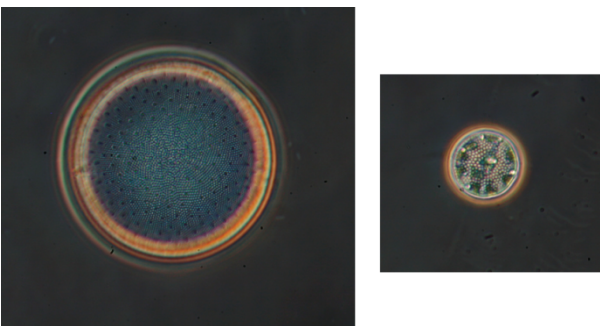


Figure S6 Indeterminate Centric Diatoms

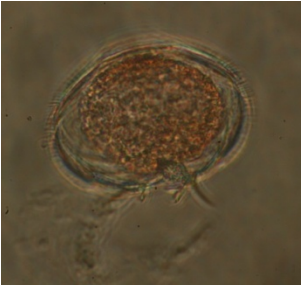


Figure S7 *Protoperidinium sp.*

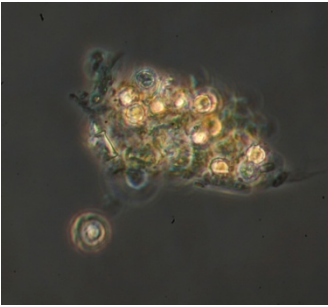


Figure S8 phytoplankton aggregate

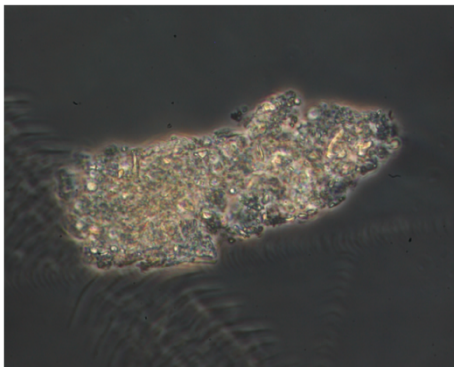
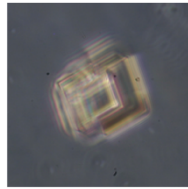
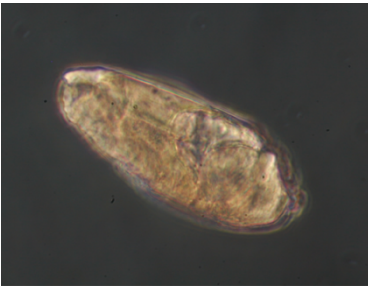


Figure S9 Inorganic particulate

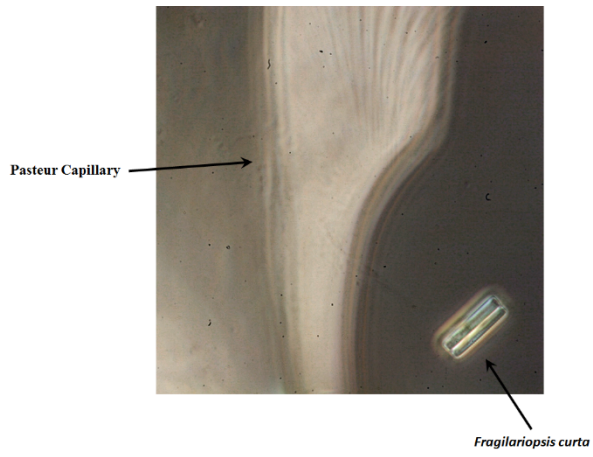


Figura S10 Pauster during isolation