

SUPPORTING INFORMATION

Synthesis of High Contrast Fluorescein-Diethers for Rapid Bench-Top
Sensing of Palladium

Weston R. Kitley, Peter J. Santa Maria, Ryan A. Cloyd, Laura M. Wysocki*

*Janelia Research Campus, Howard Hughes Medical Institute, 19700 Helix Dr., Ashburn, VA
20147*

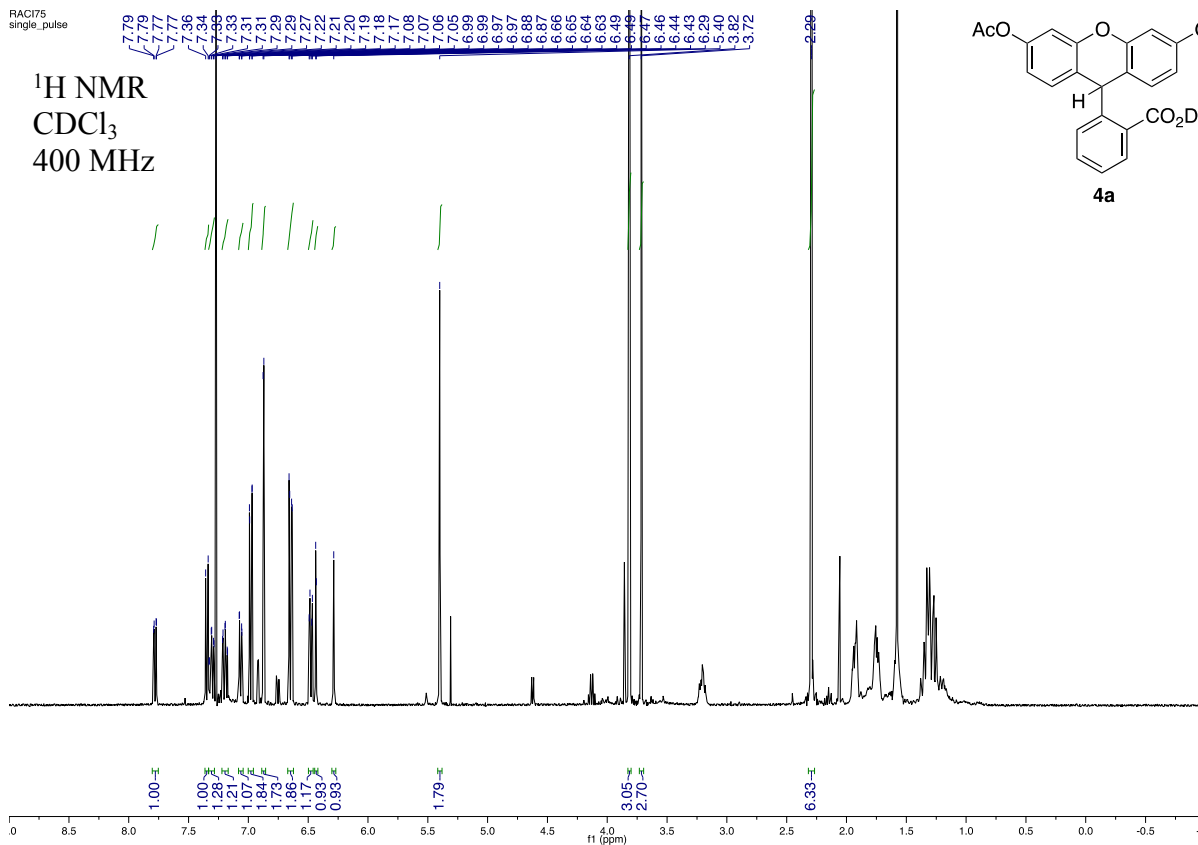
Wabash College, 301 W. Wabash Ave., Crawfordsville, IN 47933

Email: wysockil@wabash.edu

S2: ¹H and ¹³C NMR Spectra for All Compounds

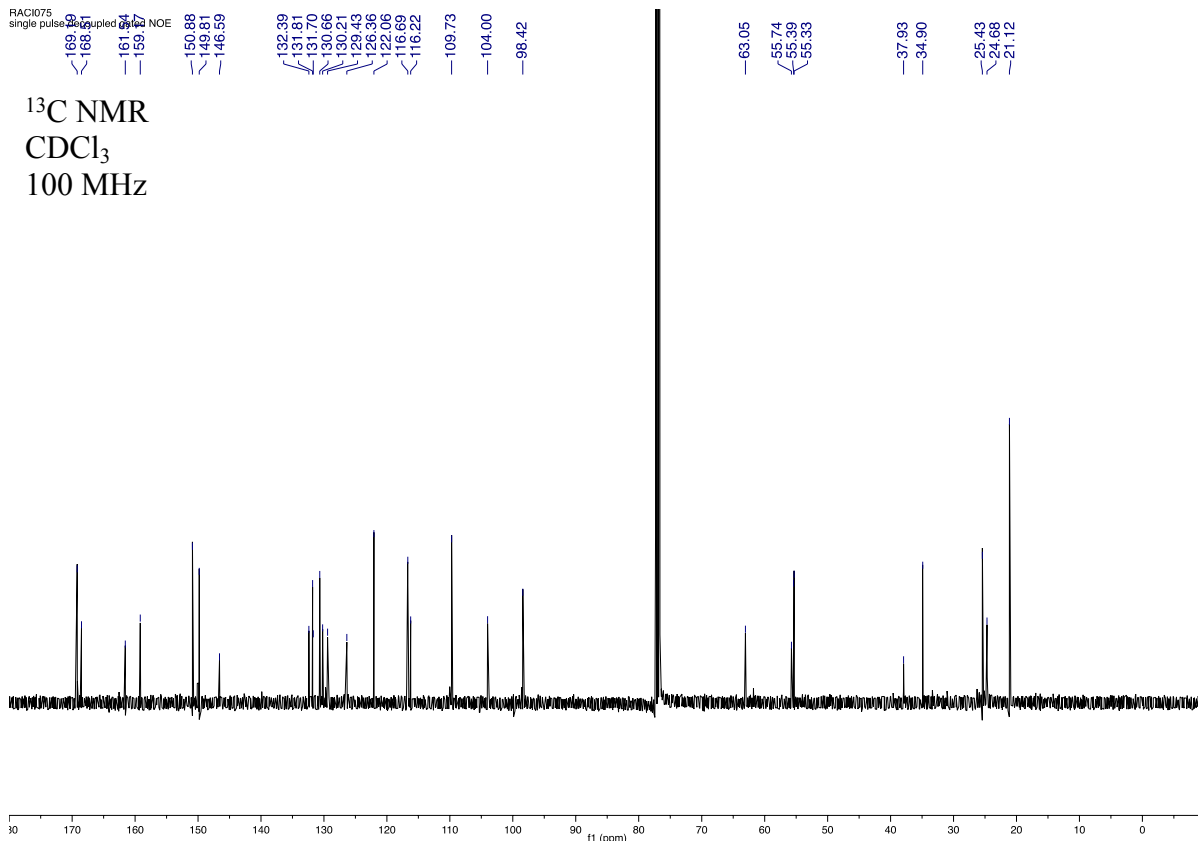
RAC1075
single_pulse

¹H NMR
CDCl₃
400 MHz



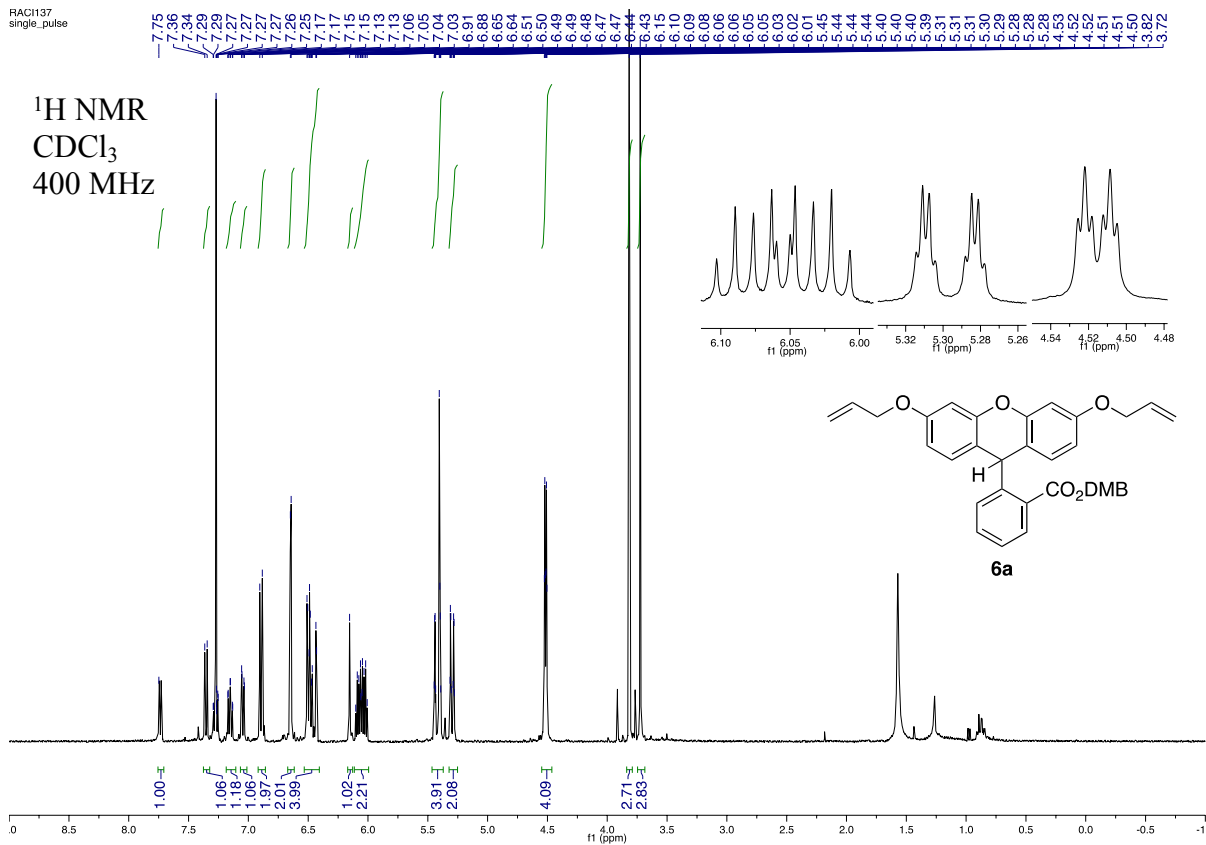
RAC1075
single_pulse

¹³C NMR
CDCl₃
100 MHz



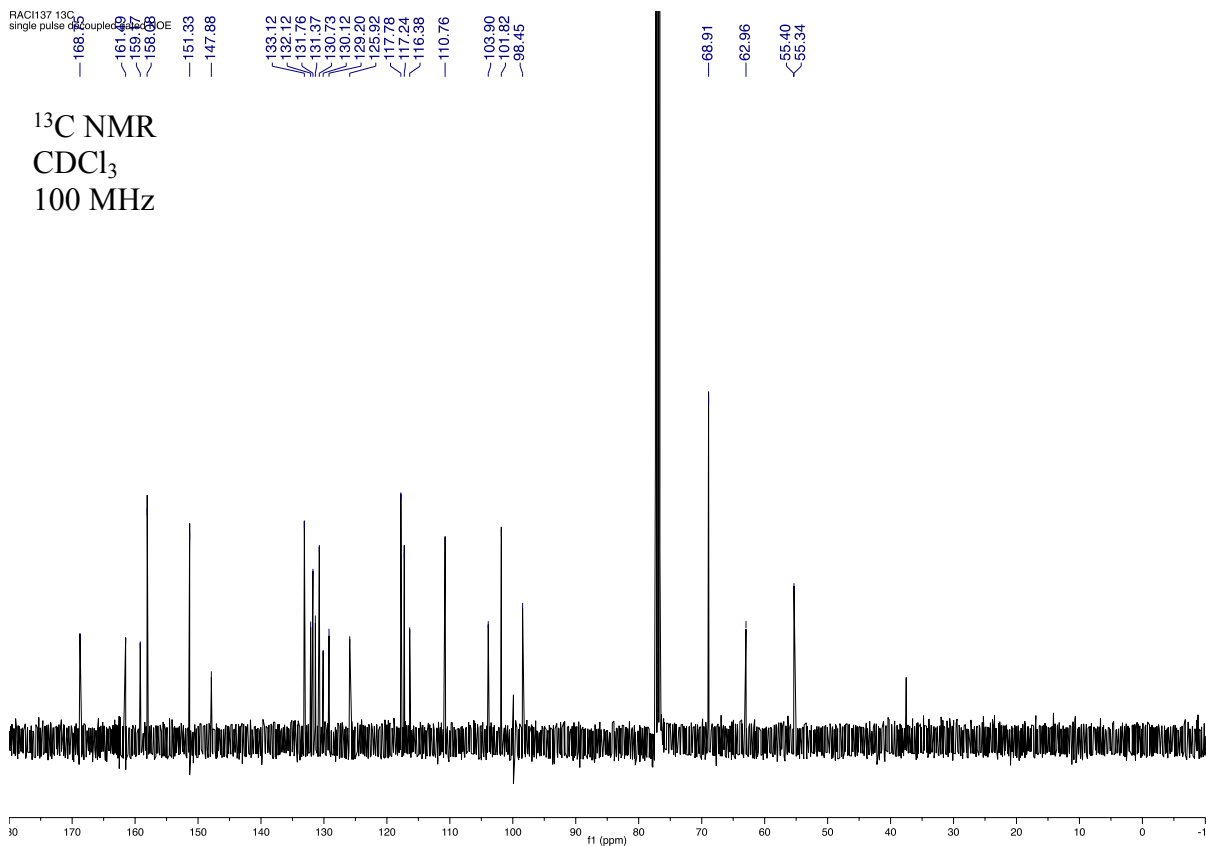
RAC1137
single_pulse

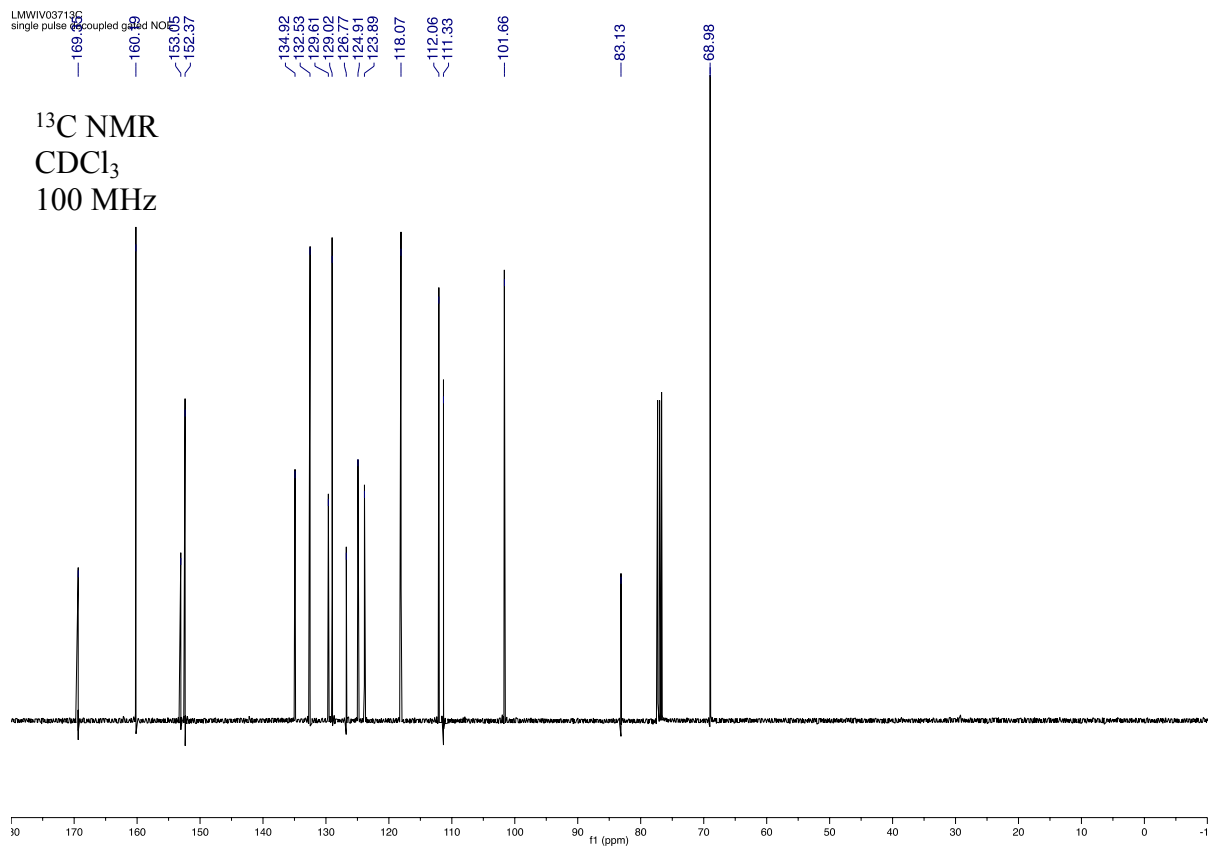
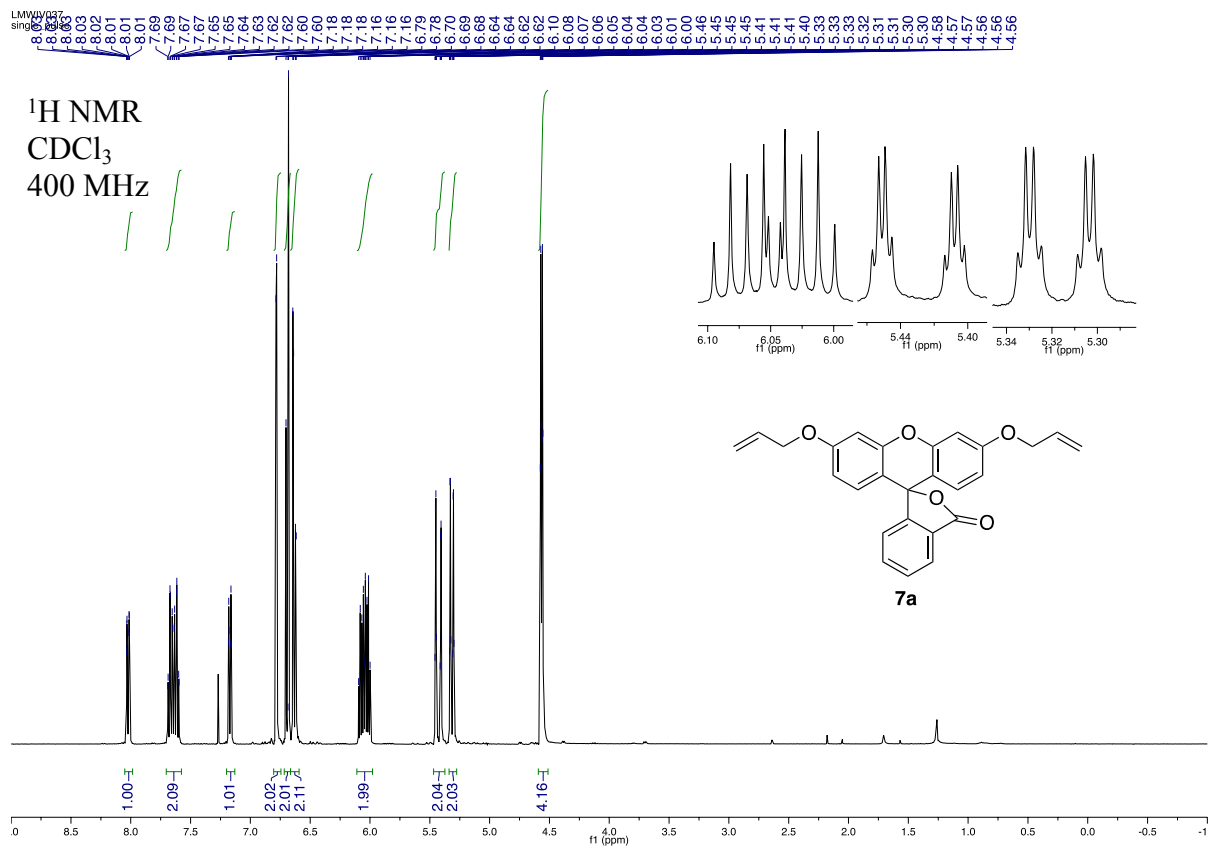
¹H NMR
CDCl₃
400 MHz



RAC1137 13C
single_pulse

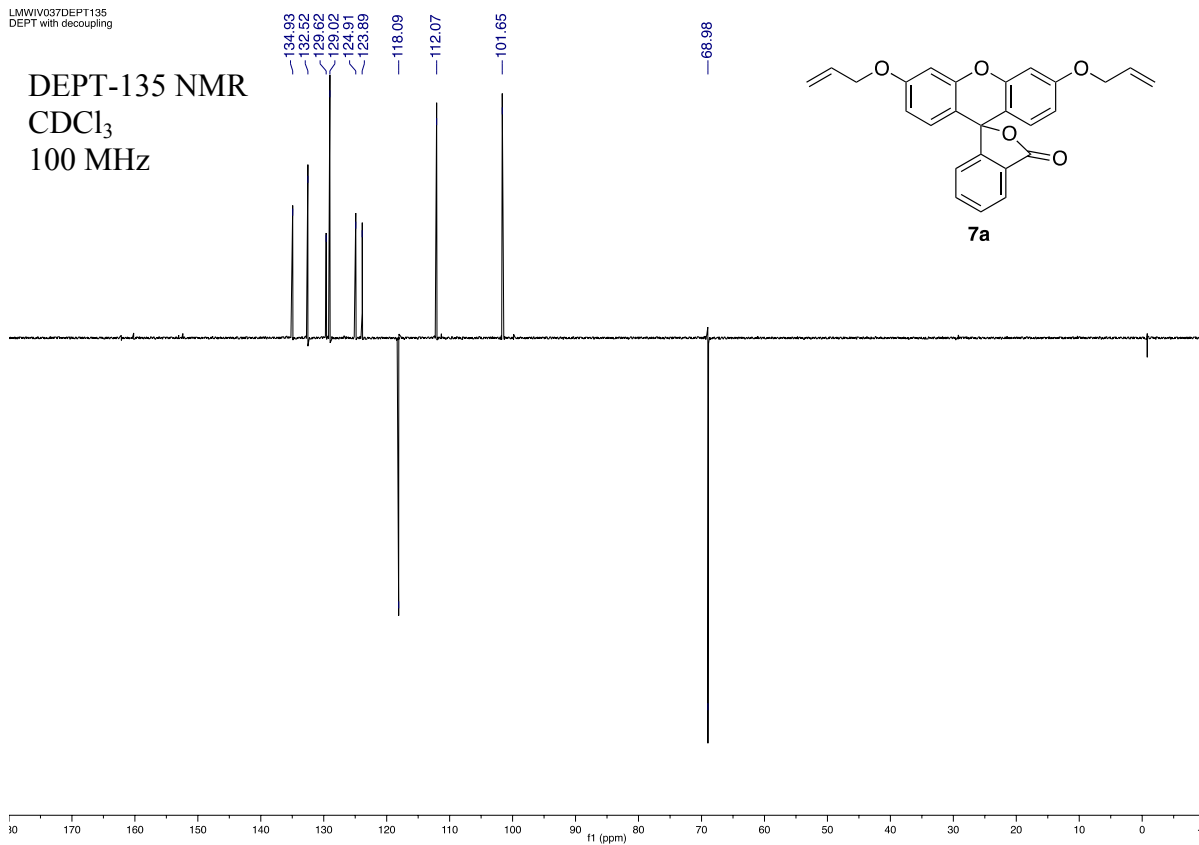
¹³C NMR
CDCl₃
100 MHz





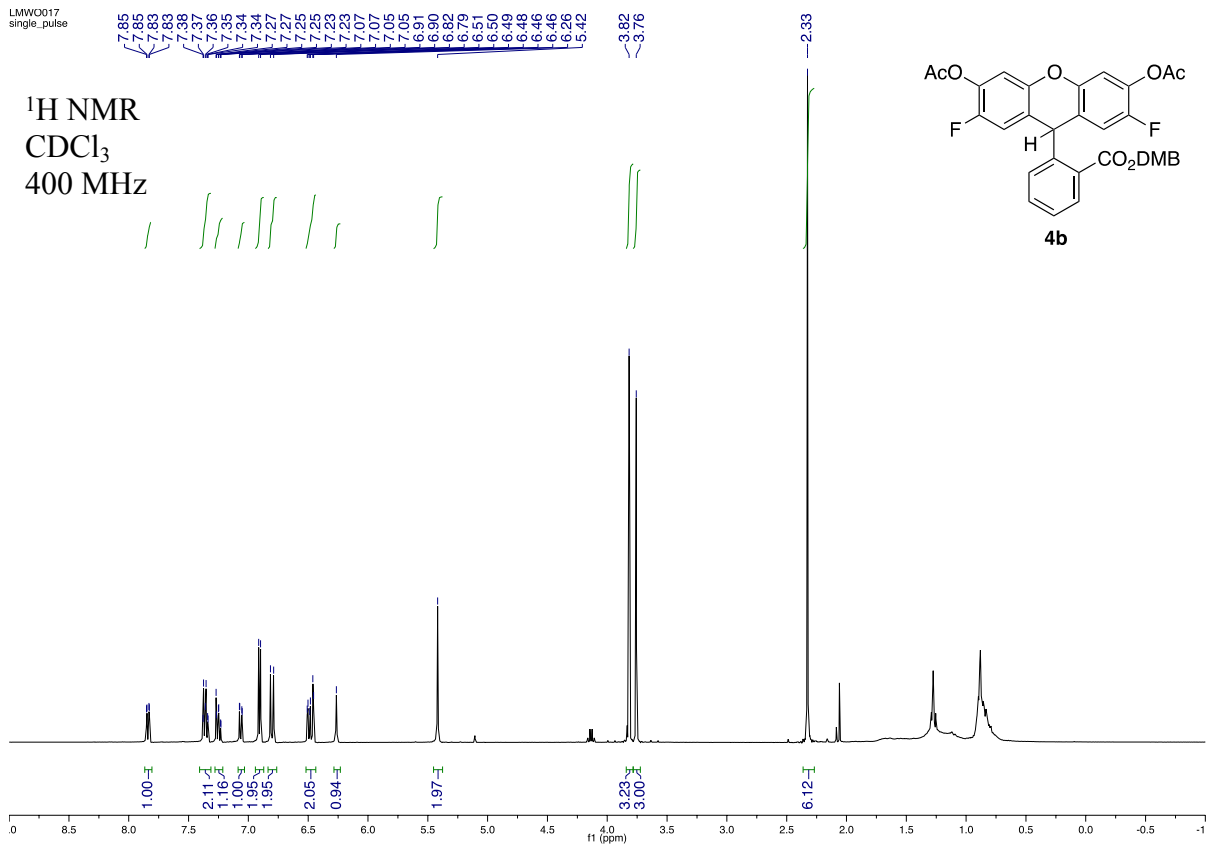
LMWV037DEPT135
DEPT with decoupling

DEPT-135 NMR
CDCl₃
100 MHz



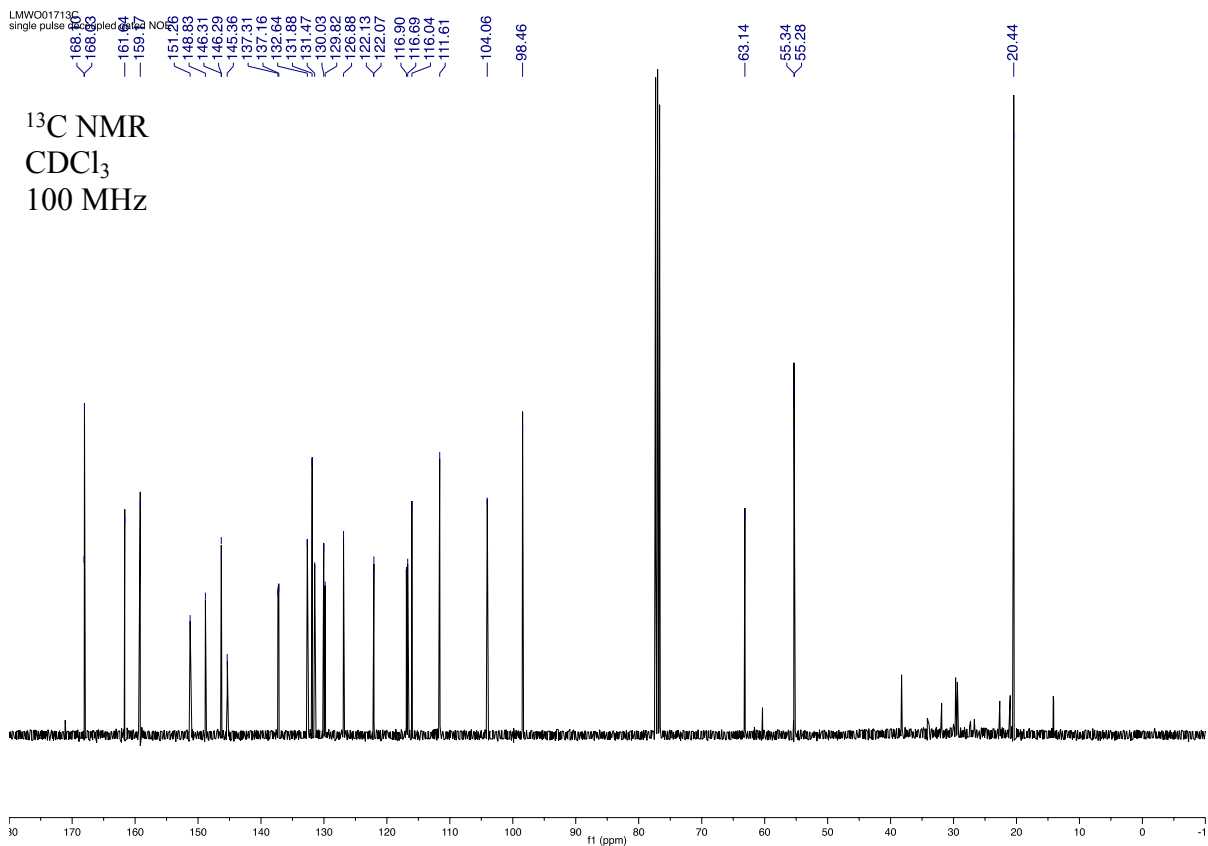
LMW0017
single_pulse

¹H NMR
CDCl₃
400 MHz



LMW001713C
single_pulse

¹³C NMR
CDCl₃
100 MHz



LMW0017DEPT135
DEPT with decoupling

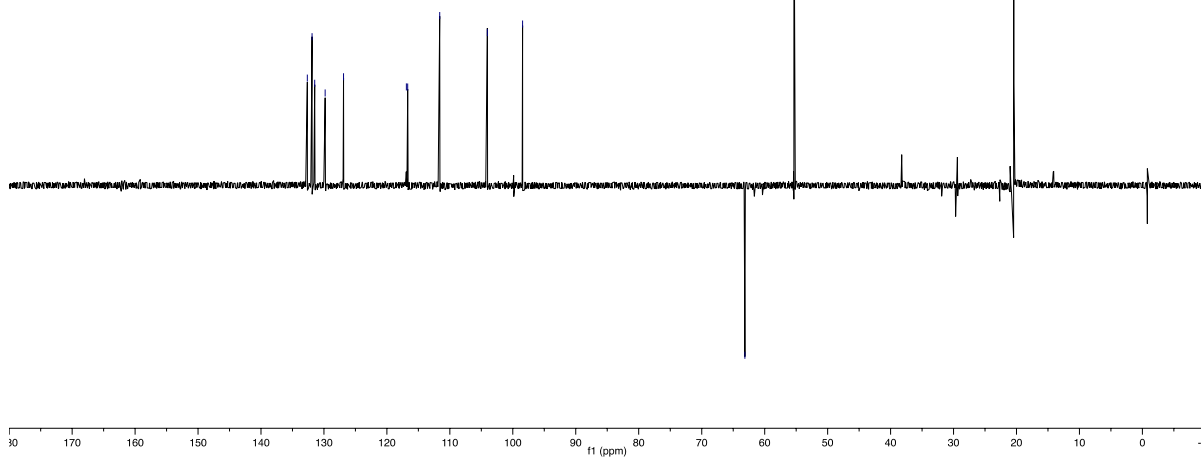
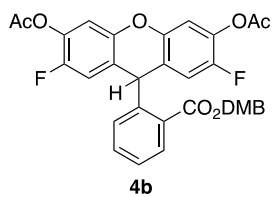
DEPT-135 NMR
CDCl₃
100 MHz

132.65
131.88
131.47
129.52
126.88

116.90
116.69
111.61
104.04
98.45

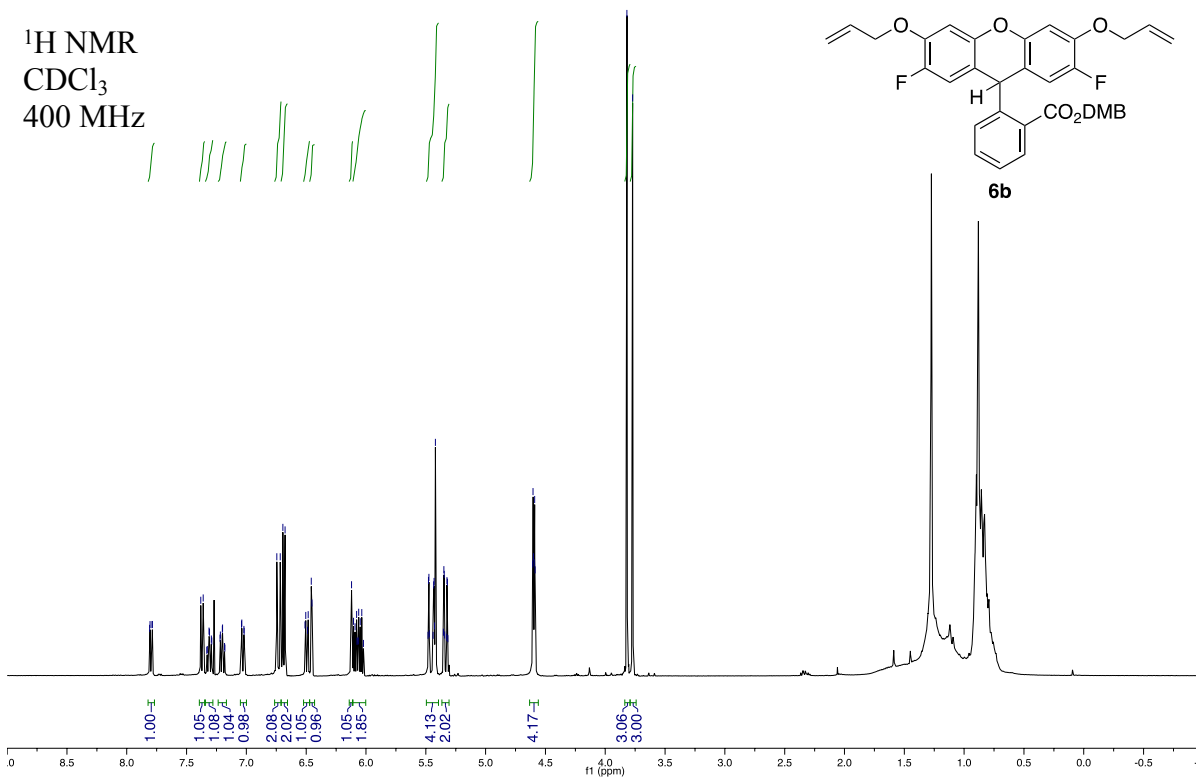
63.14
55.34
55.28

20.44



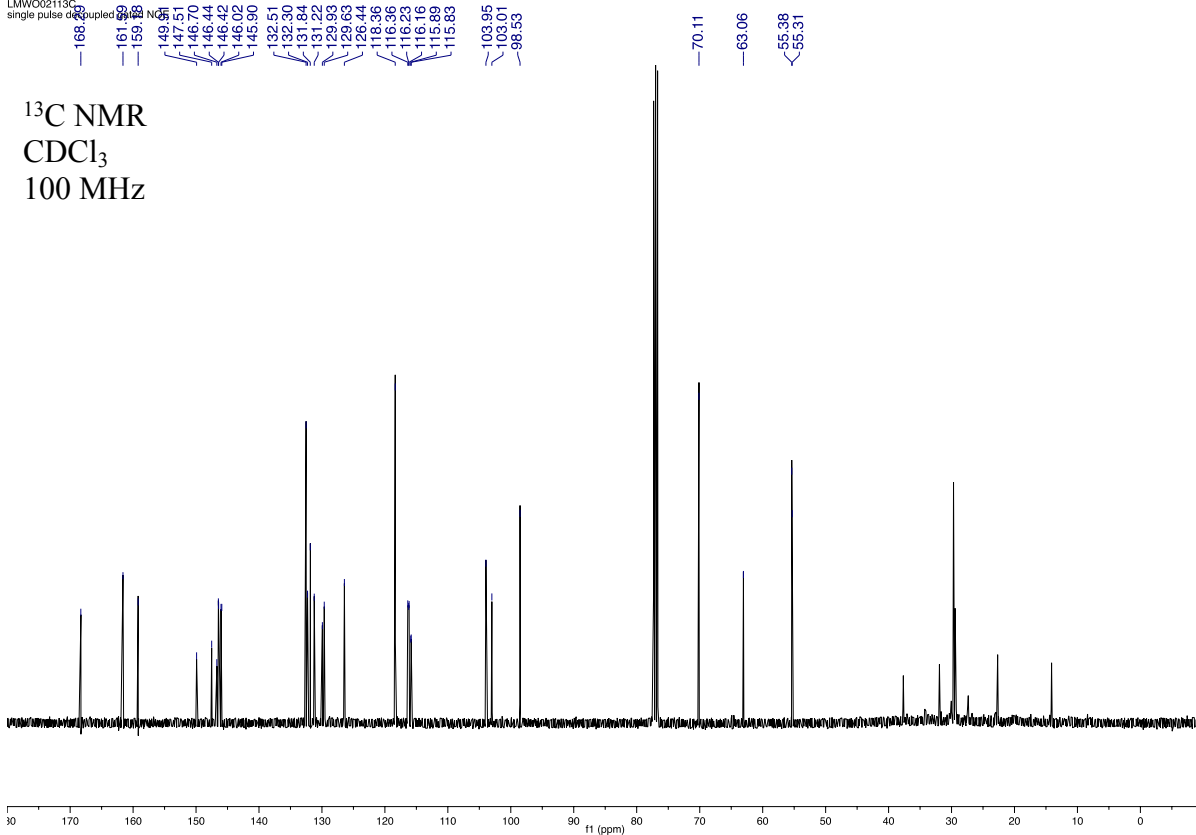
LMW0021
single_pulse

¹H NMR
CDCl₃
400 MHz



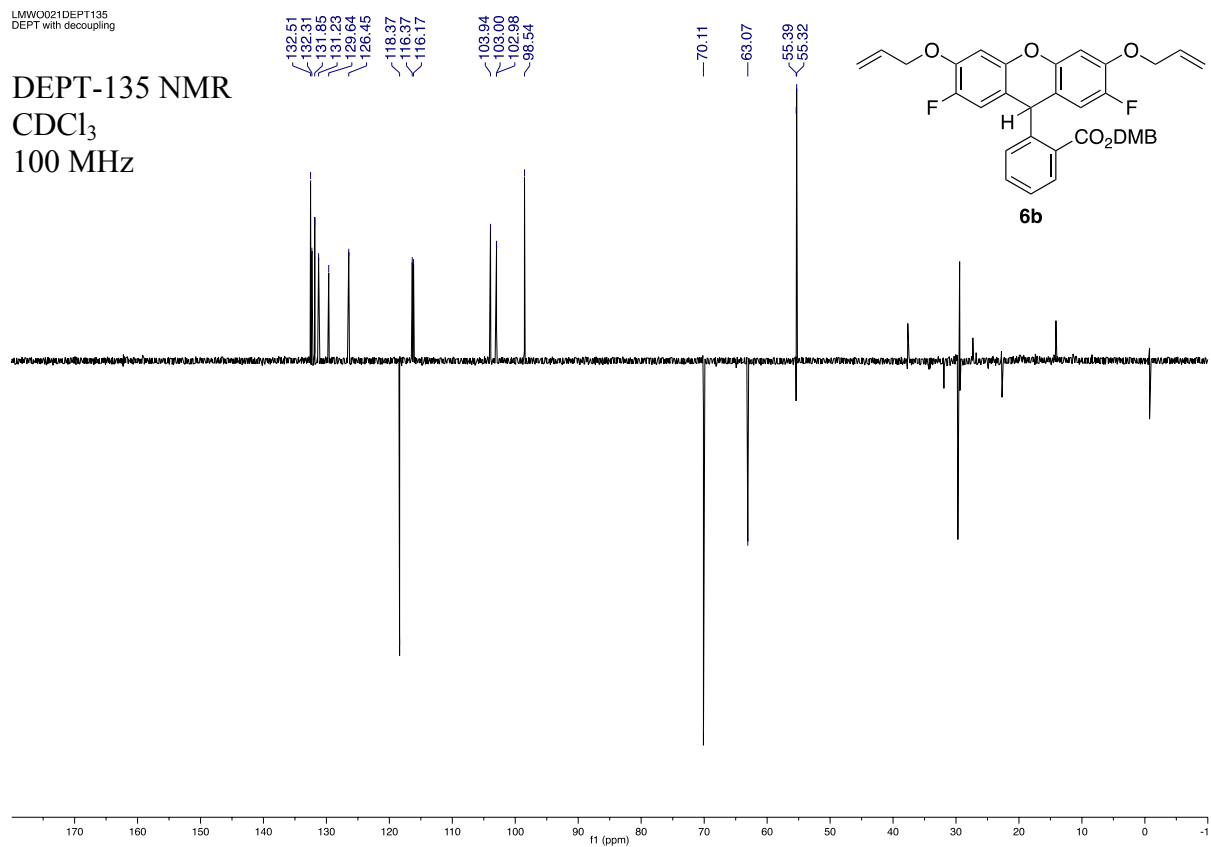
LMW002113C
single_pulse decoupled

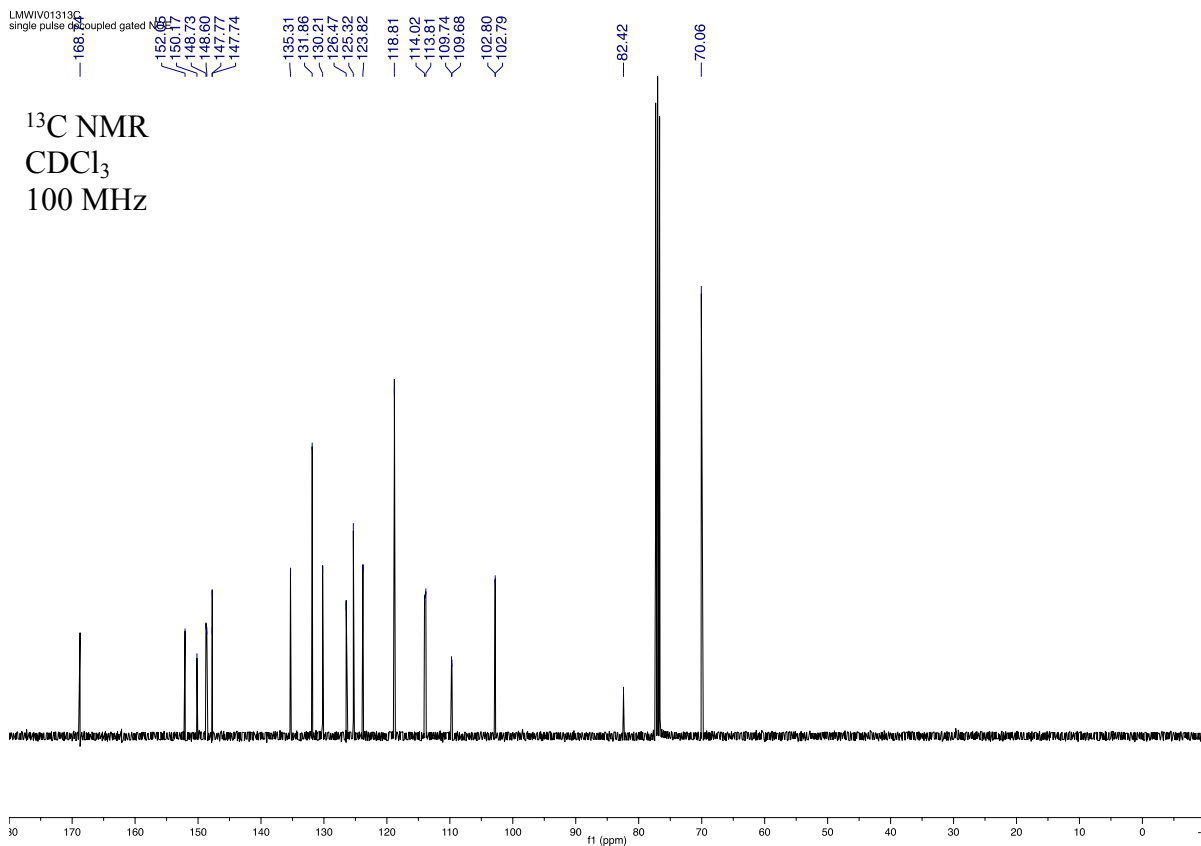
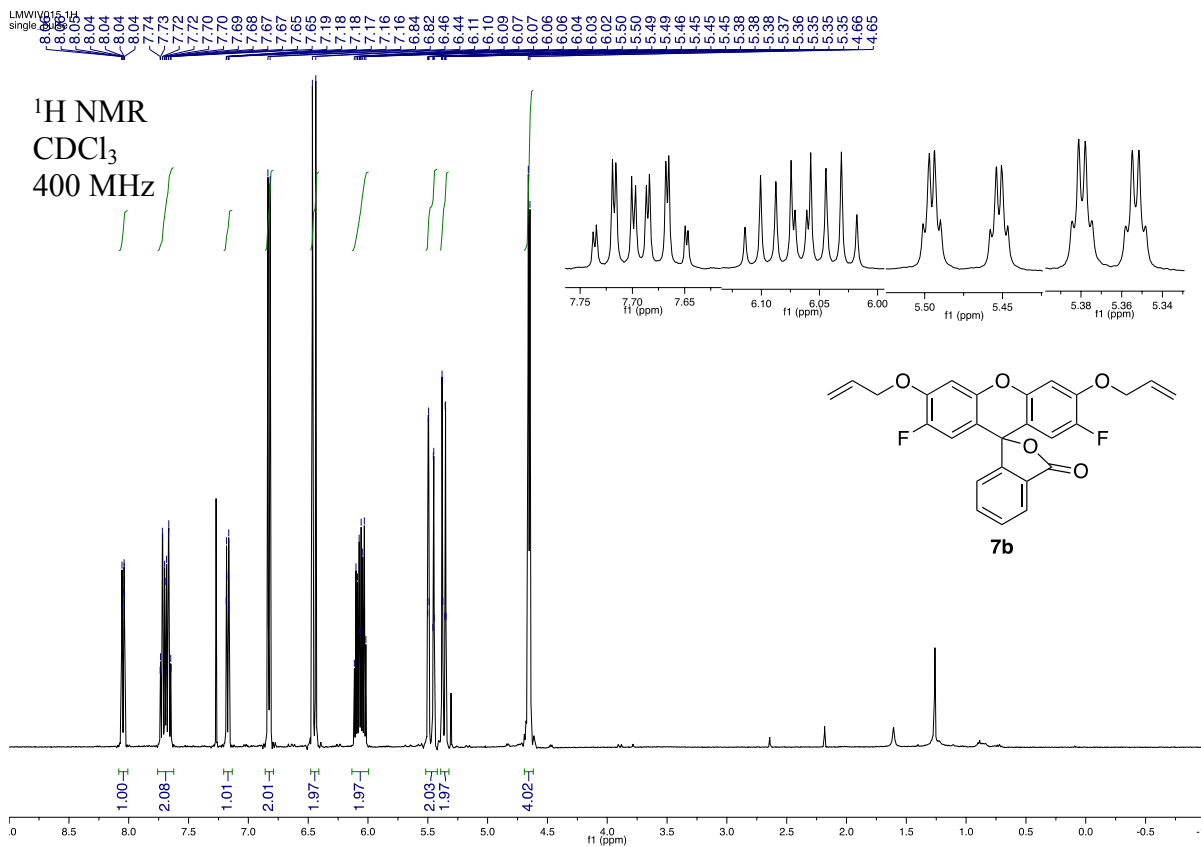
¹³C NMR
CDCl₃
100 MHz



LMW0021DEPT135
DEPT with decoupling

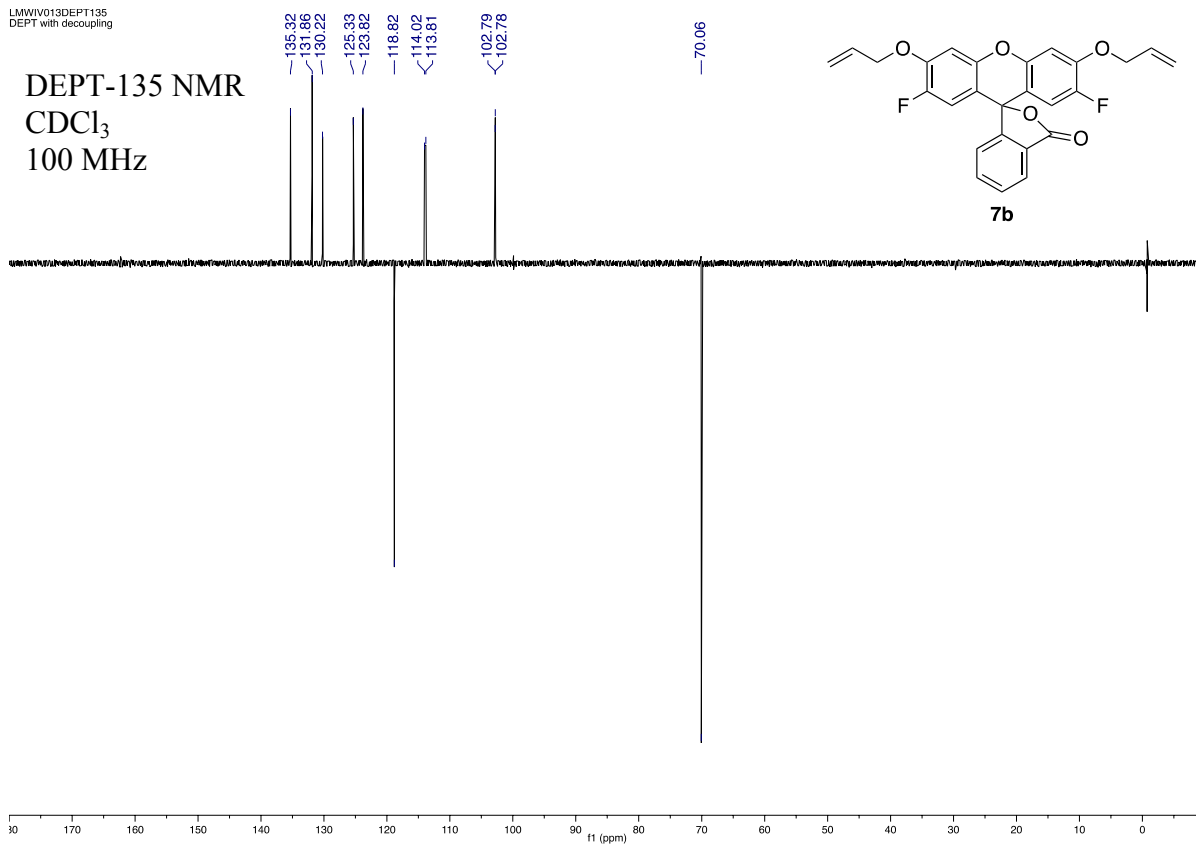
DEPT-135 NMR
CDCl₃
100 MHz

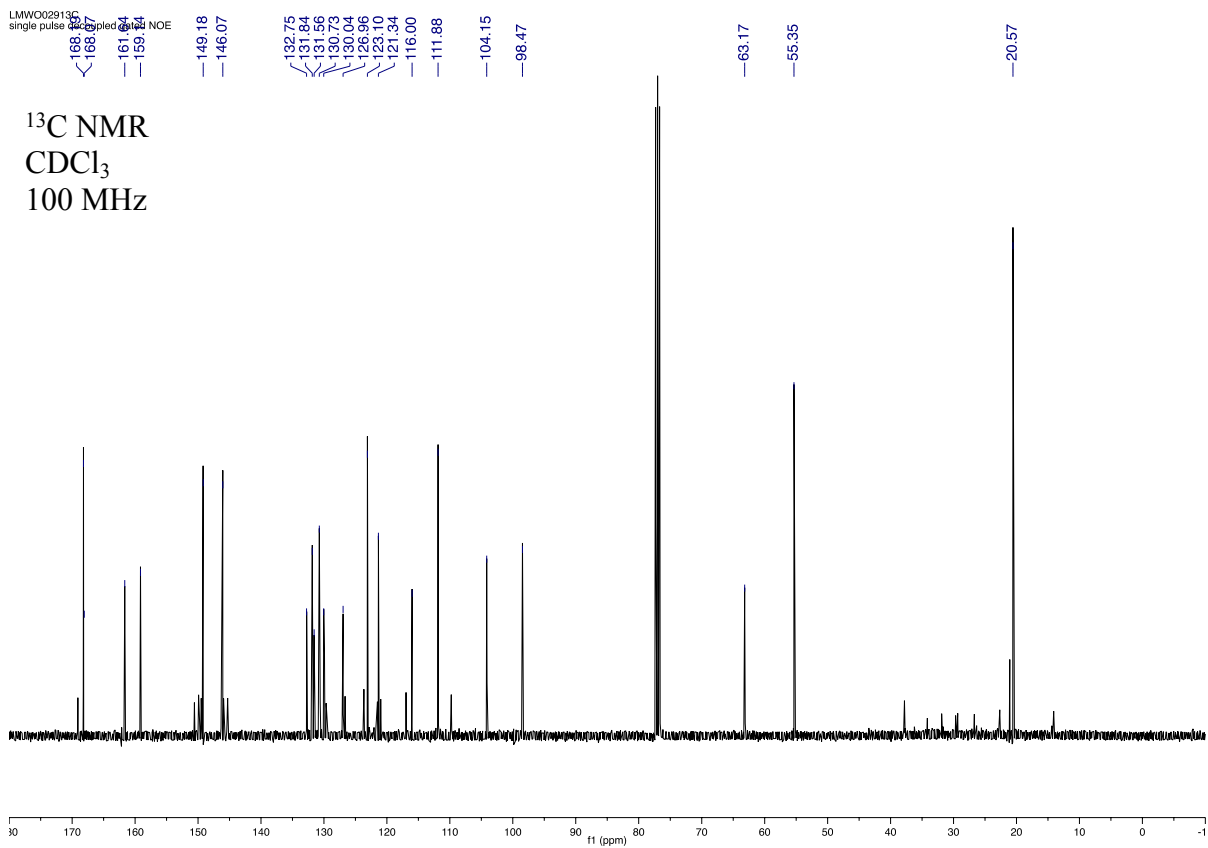
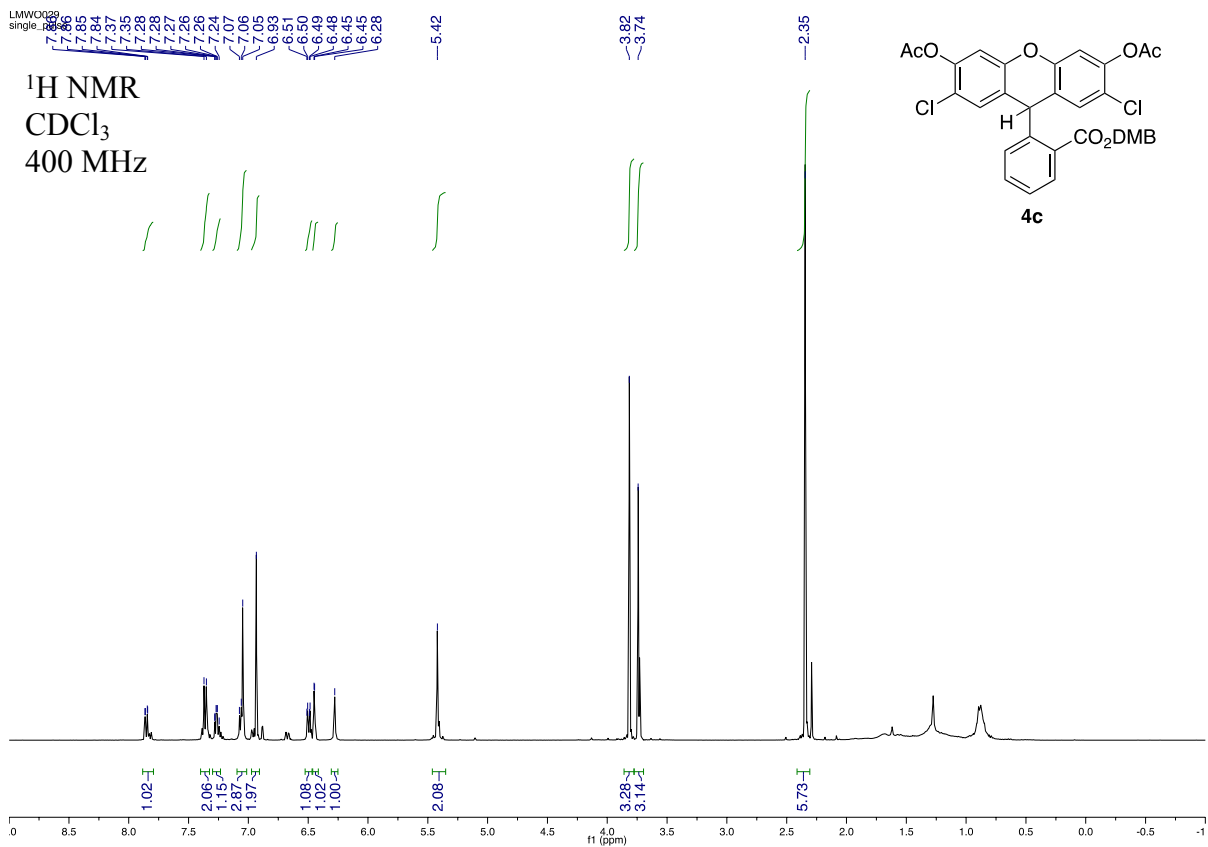




LMWIV013DEPT135
DEPT with decoupling

DEPT-135 NMR
CDCl₃
100 MHz





LMW0029DEPT135
DEPT with decoupling

DEPT-135 NMR
CDCl₃
100 MHz

132.76
131.85
130.73
126.96

111.88

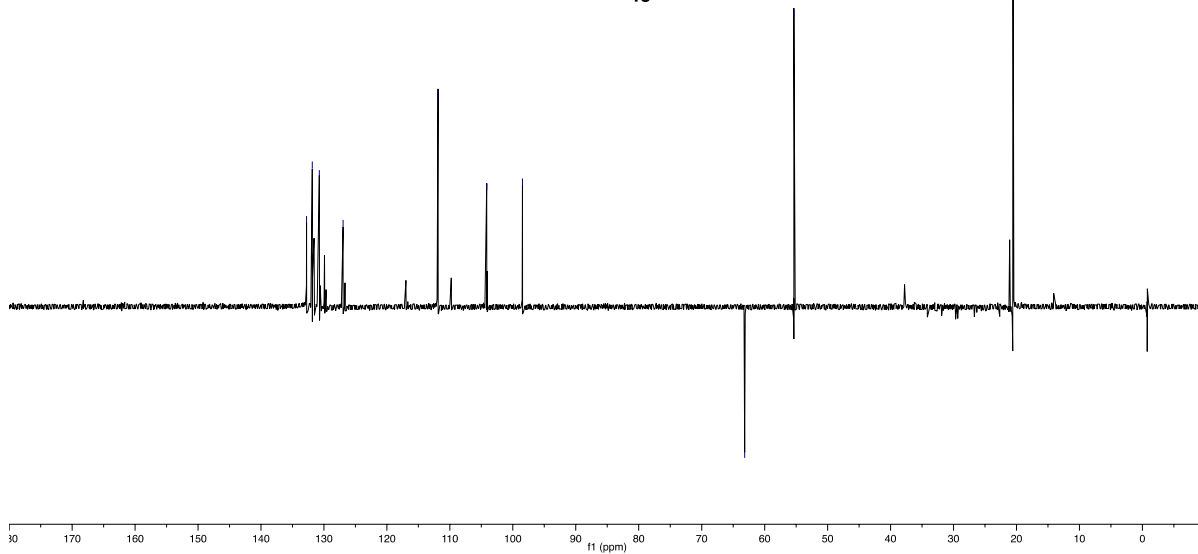
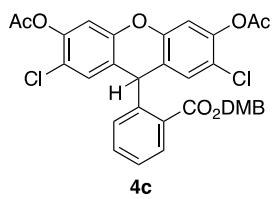
104.14

98.47

63.17

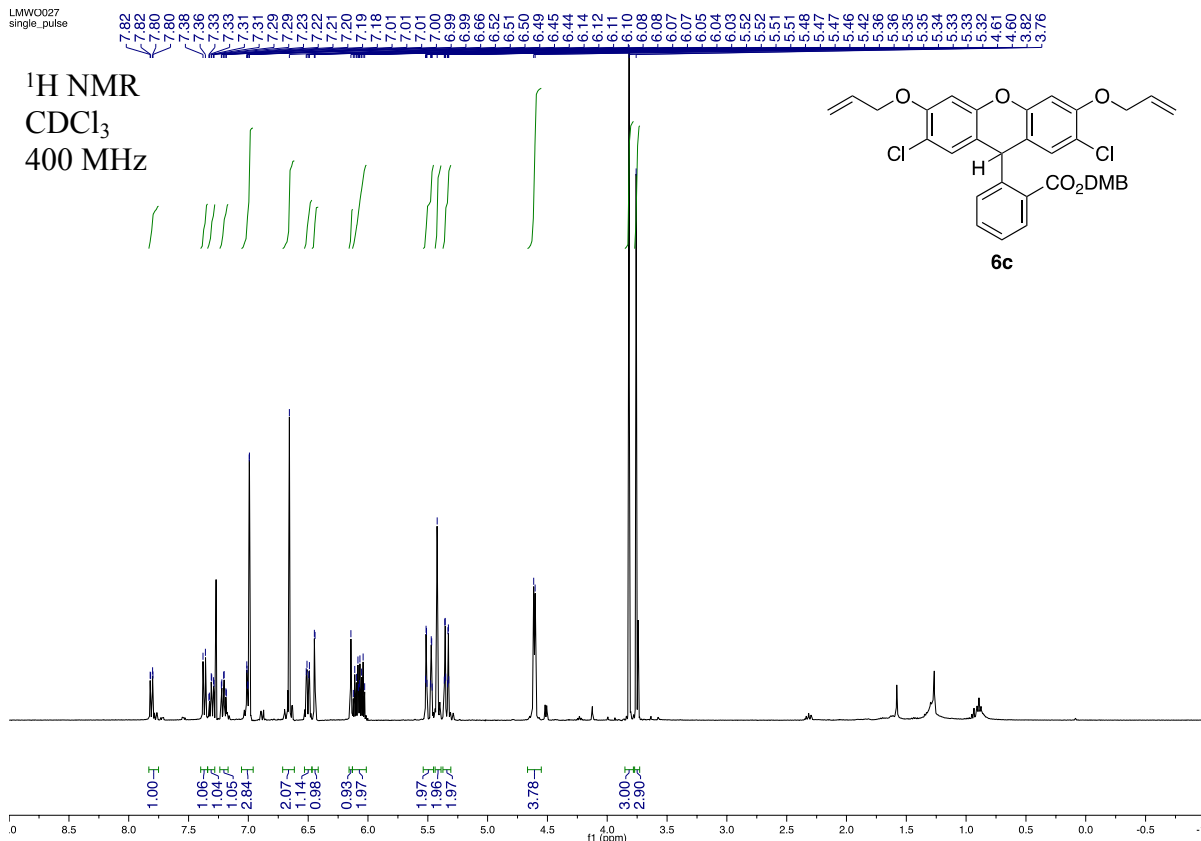
55.35

20.57



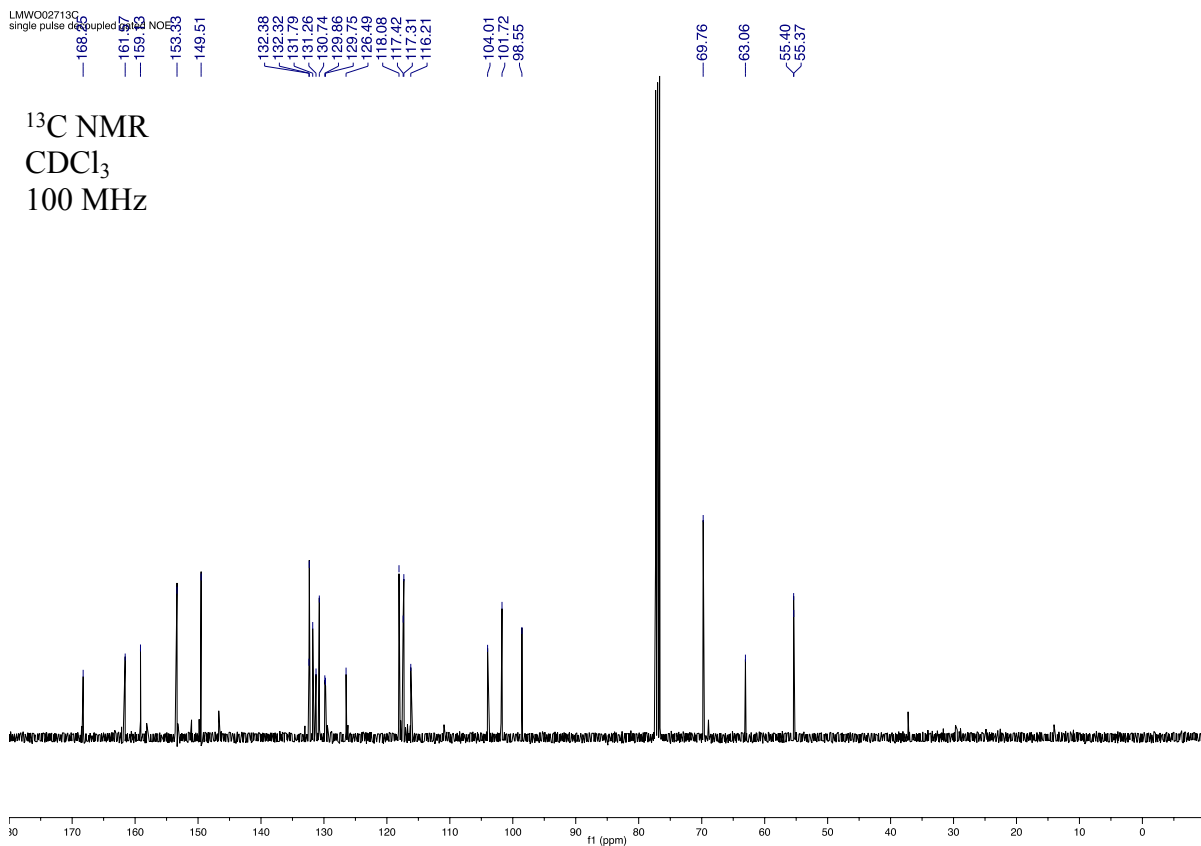
LMW0027
single_pulse

¹H NMR
CDCl₃
400 MHz



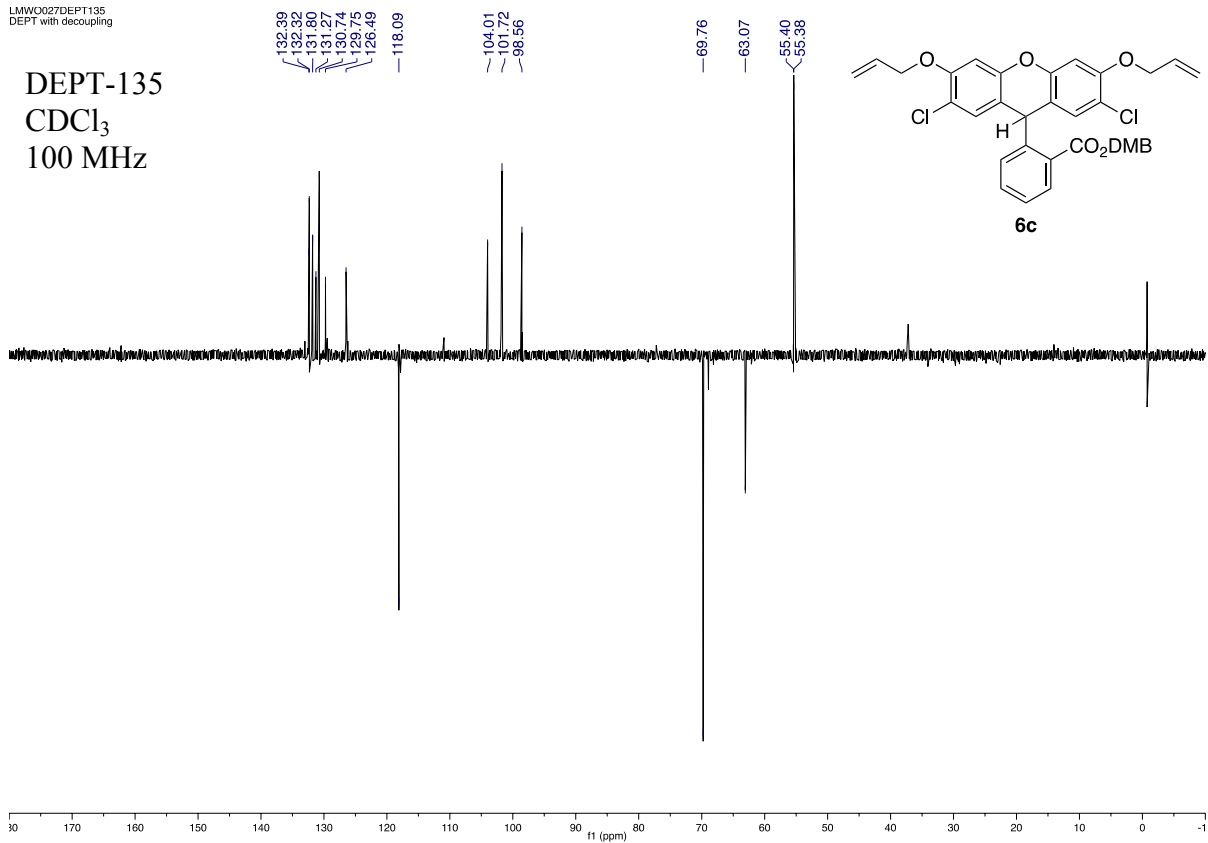
LMW002713G
single_pulse decoupled NOESY

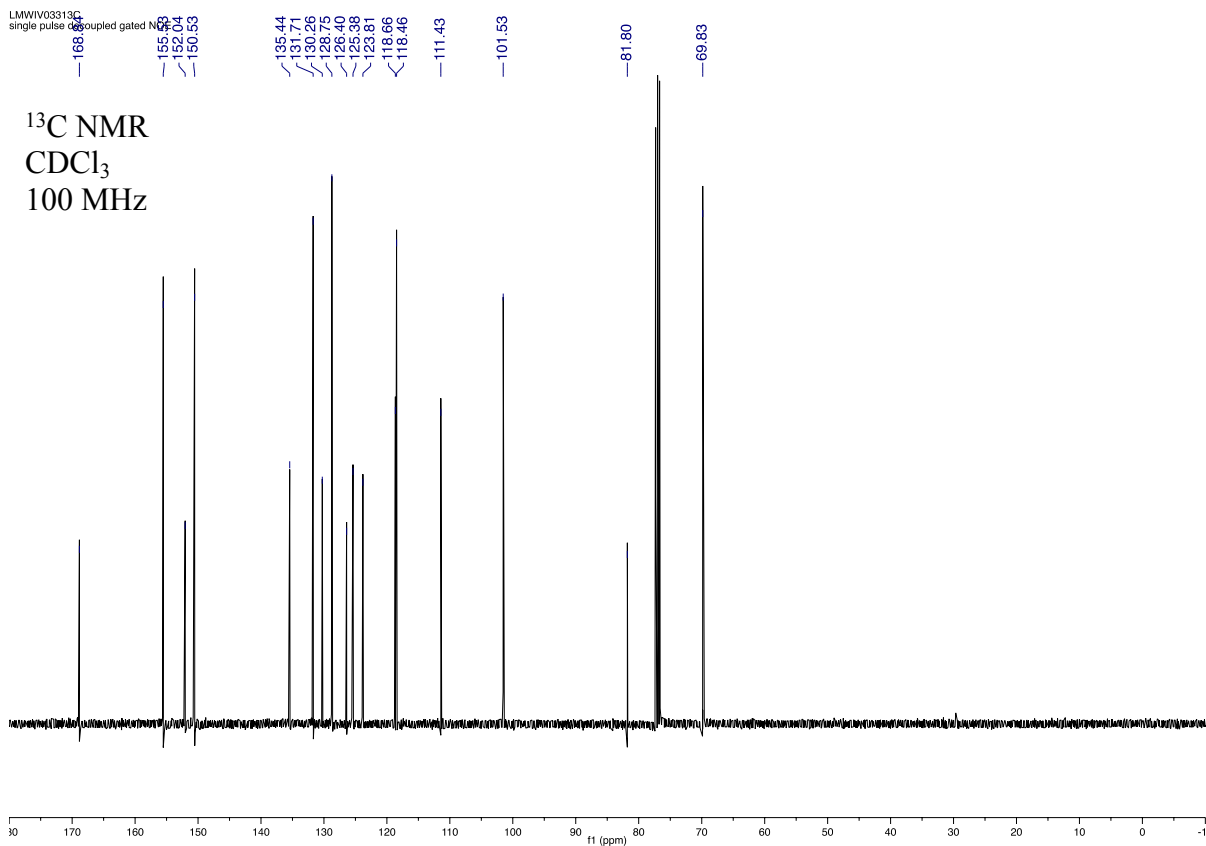
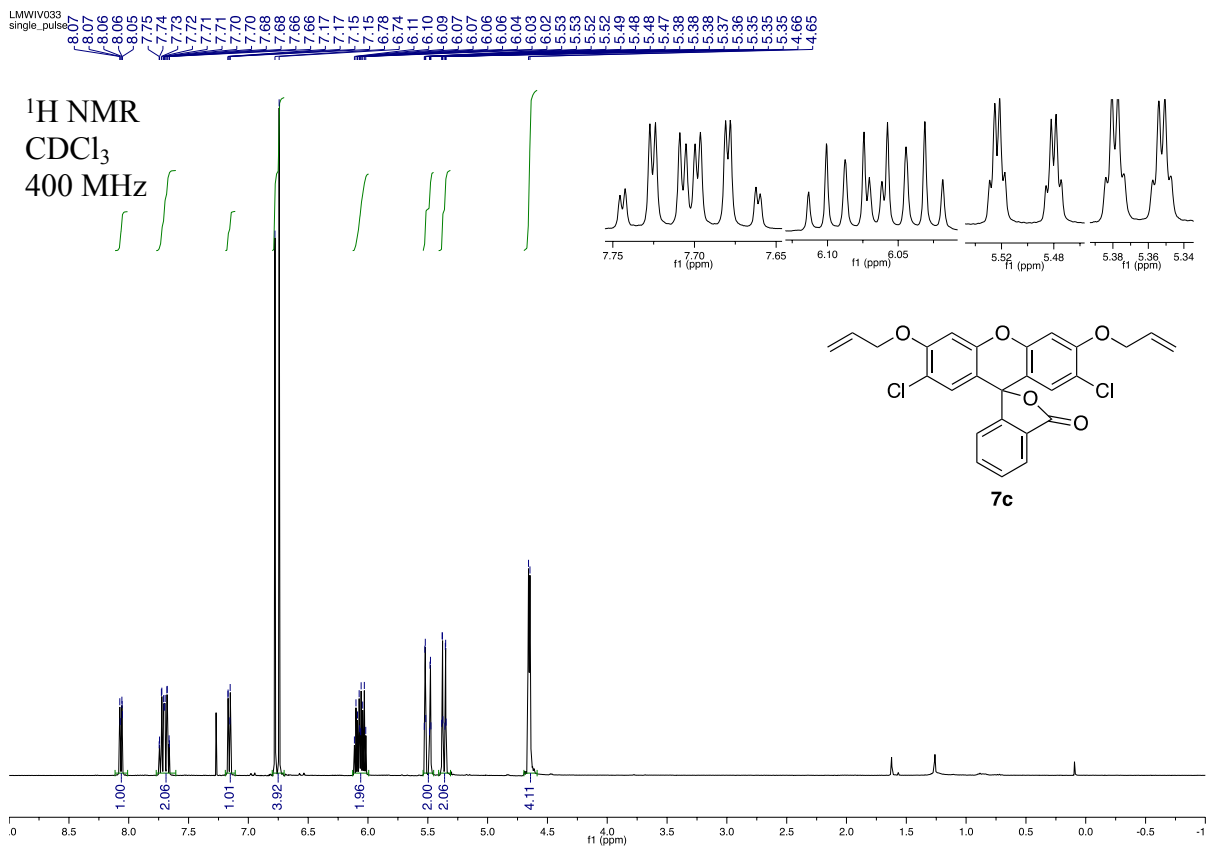
¹³C NMR
CDCl₃
100 MHz



LMW0027DEPT135
DEPT with decoupling

DEPT-135
CDCl₃
100 MHz





LMWIV033DEPT135
DEPT with decoupling

DEPT-135
CDCl₃
100 MHz

