

Supporting Information

Spherical Octanuclear Clusters in the Na-*Ln*-Dipic System –
Encapsulation of Nitrate Ion and Incorporation of Water Nonamers and
Dodecamers

S. M. Elahi and M. V. Rajasekharan*

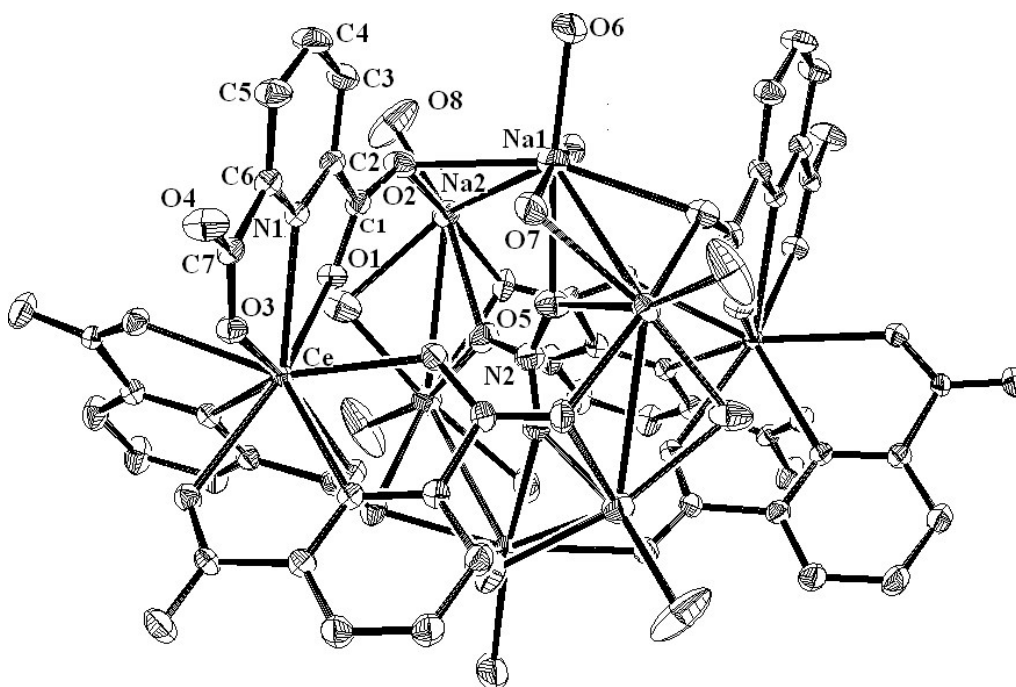


Figure S1. Ortep diagram of compound **1**, showing thermal ellipsoids at 50% probability. All lattice water molecules and hydrogen atoms were omitted for clarity.

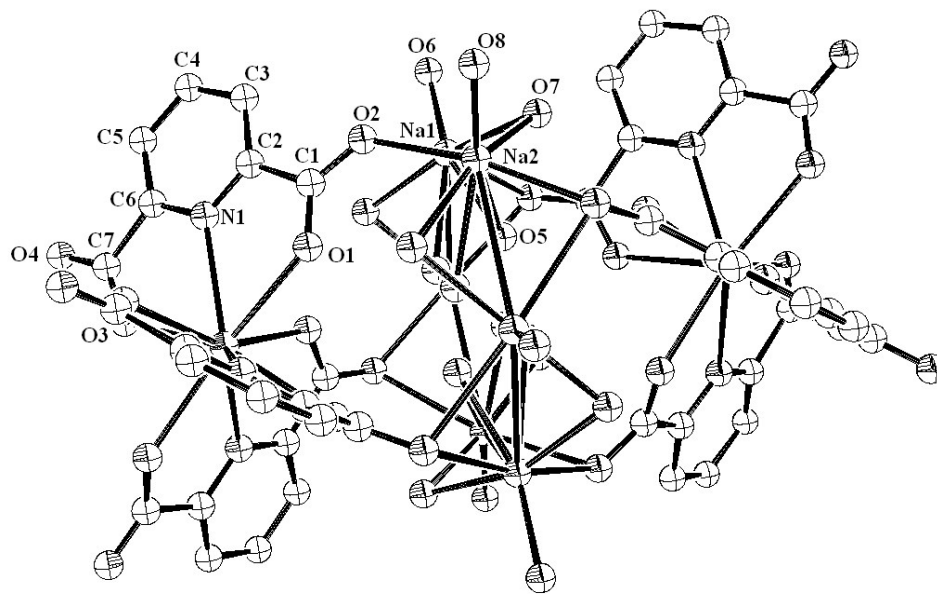


Figure S2. Ortep diagram of compound **4**, showing thermal ellipsoids at 50% probability. All lattice water molecules and hydrogen atoms were omitted for clarity.

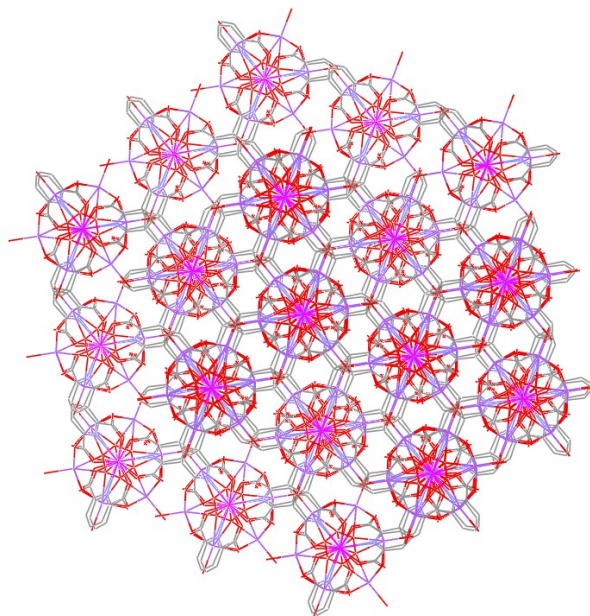


Figure S3. Packing through *c*-axis of compound **1**.

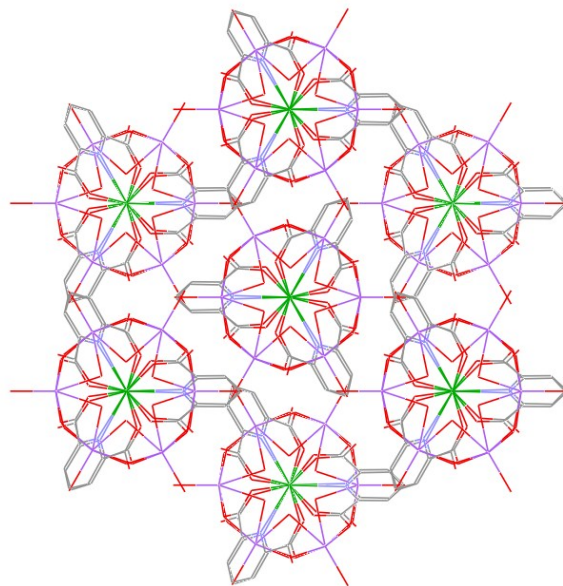


Figure S4. Packing through *c*-axis of compound **4**.

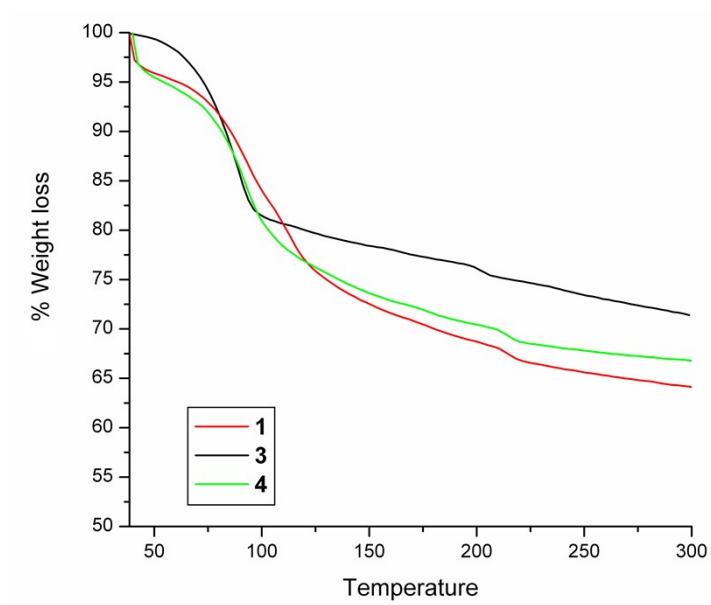


Figure S5. Thermogravimetric plots of compound **1**, **3** and **4**.