

Supporting information

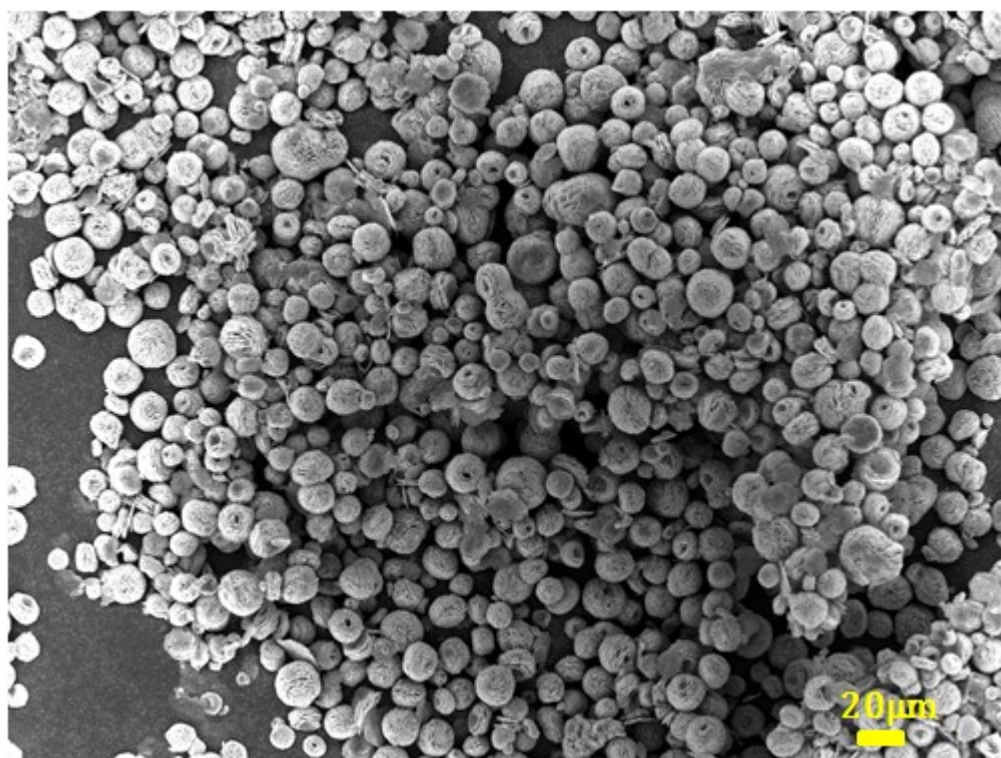


Fig. S1 lower magnification SEM image of China rose-like structured β -Co(OH)₂

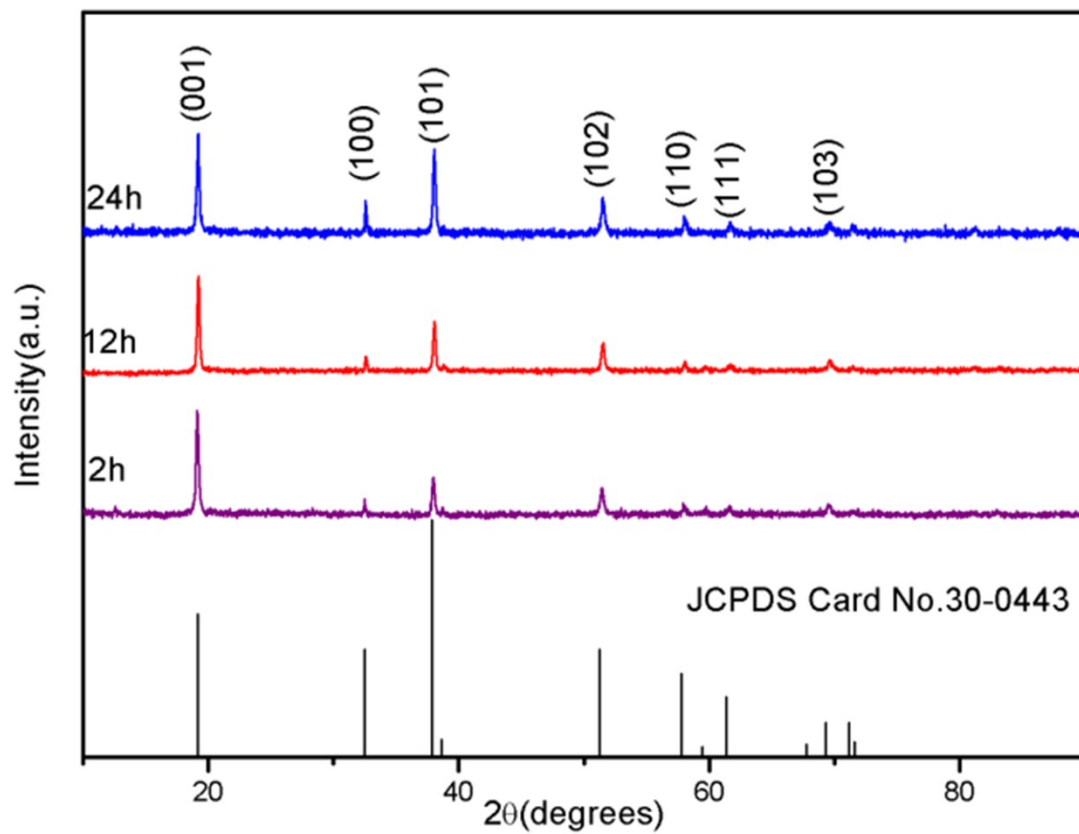


Fig. S2 XRD patterns of the time-dependent evolution in the form of β -Co(OH)₂

China rose-like flowers at time of 2, 12, and 24 h, respectively.

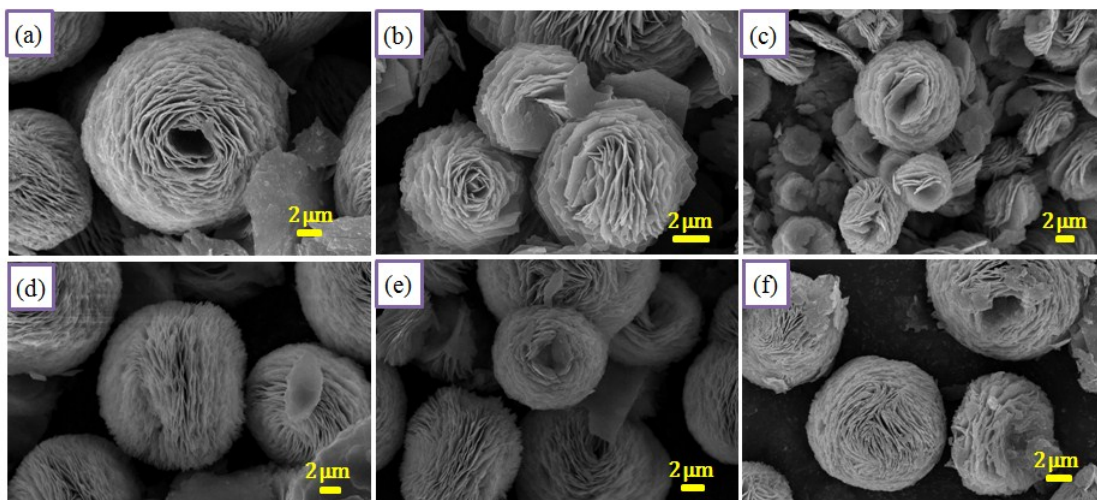


Fig. S3 Large scale SEM images of products at different calcination temperature: (a) precursor; (b) 280 °C; (c) 360 °C; (d) 400 °C; (e) 440 °C; (f) 520 °C.