

Supplemental Information

X-ray Absorption Spectroscopy of Lithium Insertion and De-Insertion in Copper Birnessite Nanoparticle Electrodes †

Christopher J. Pelliccione,^a Yue Ru Li,^b Amy C. Marschilok,^{b,c*} Kenneth J. Takeuchi^{b,c*} and Esther S. Takeuchi^{a,b,c*}

a. Brookhaven National Laboratory, Upton, NY 11973

b. Department of Chemistry, Stony Brook University, Stony Brook, NY 11790

c. Department of Materials Science and Engineering, Stony Brook University, Stony Brook, NY 11790

*corresponding authors: (ACM) amy.marschilok@stonybrook.edu, (KJT) kenneth.takeuchi.1@stonybrook.edu, (EST) esther.takeuchi@stonybrook.edu

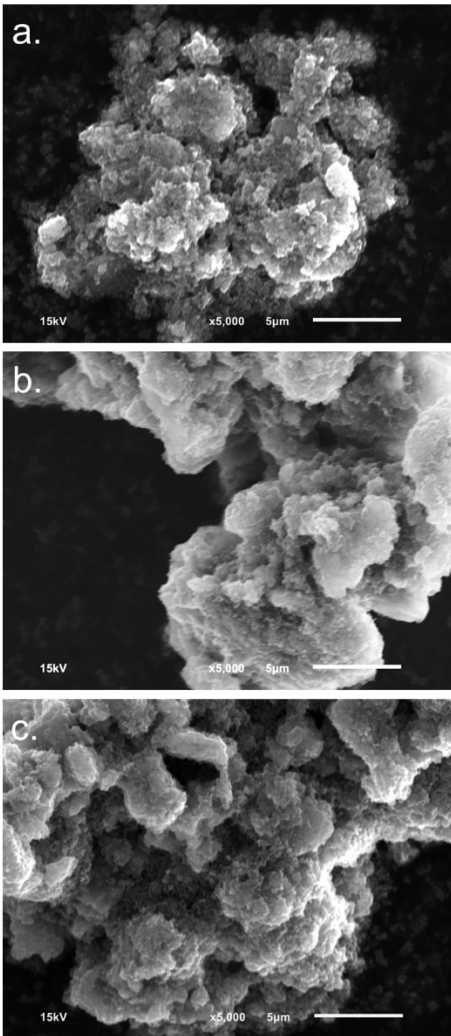


Figure S1. Scanning electron micrographs of copper birnessite samples, a) as-prepared, after cyclic voltammetry in b) LiBF_4 and c) LiPF_6 electrolyte.

Scanning electron micrographs were recorded of the as-prepared material and the material isolated after cyclic voltammetry (Figure S1). All samples showed granular material comprised of agglomerates several microns in size. No significant differences were observed in the samples, suggesting no significant change after cyclic voltammetry.