

**Transnitrosylation Products of the Dipeptide Cysteinyl-Cysteine: An Examination  
by Tandem Mass Spectrometry and Density Functional Theory  
Electronic Supplementary Information (ESI)**

Matias Butler<sup>1,2</sup>, K.W. Michael Siu<sup>1,3</sup> and Alan C. Hopkinson<sup>1</sup>

<sup>1</sup> Department of Chemistry and Centre for Research in Mass Spectrometry, York University, 4700 Keele Street, Toronto, Ontario, Canada M3J 1P3.

<sup>2</sup> Current address: Departamento de Química Orgánica, UMyMFOR-CONICET, Facultad de Ciencias Exactas y Naturales, Universidad de Buenos Aires, Ciudad Universitaria, Pabellón II, 3º piso, C1428EHA, Buenos Aires, Argentina

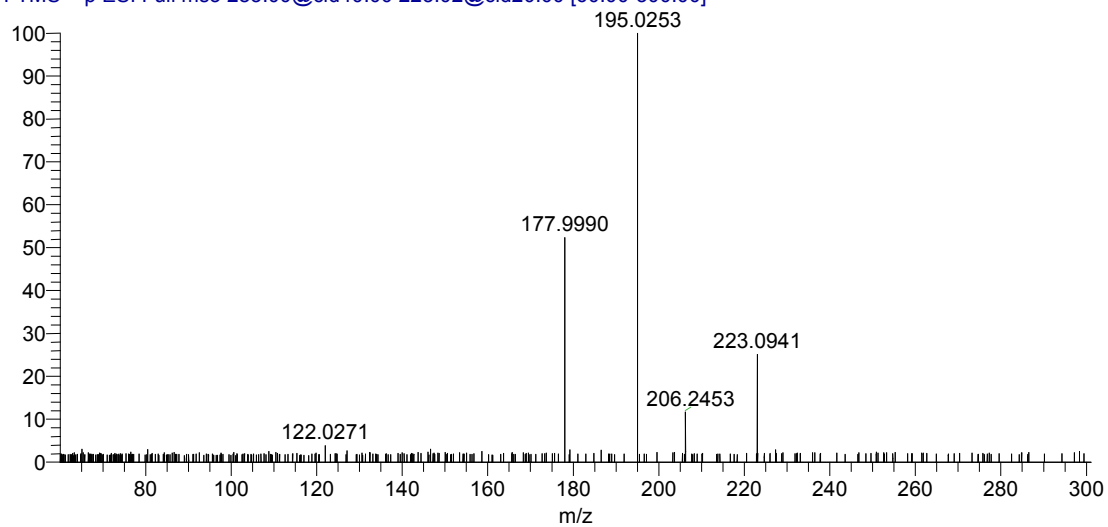
<sup>3</sup> Department of Chemistry and Biochemistry, University of Windsor, 401 Sunset Avenue, Windsor, Ontario, Canada N9B 3P4

Contents

1. Mass spectra (Figures S1-S7)	S2
2. Optimized structures (Figure S8)	S9
3. Energy profiles (Figures S9-S10)	S10
4. Total energies of calculated structures	S12
5. Cartesian coordinates of calculated structures	S14

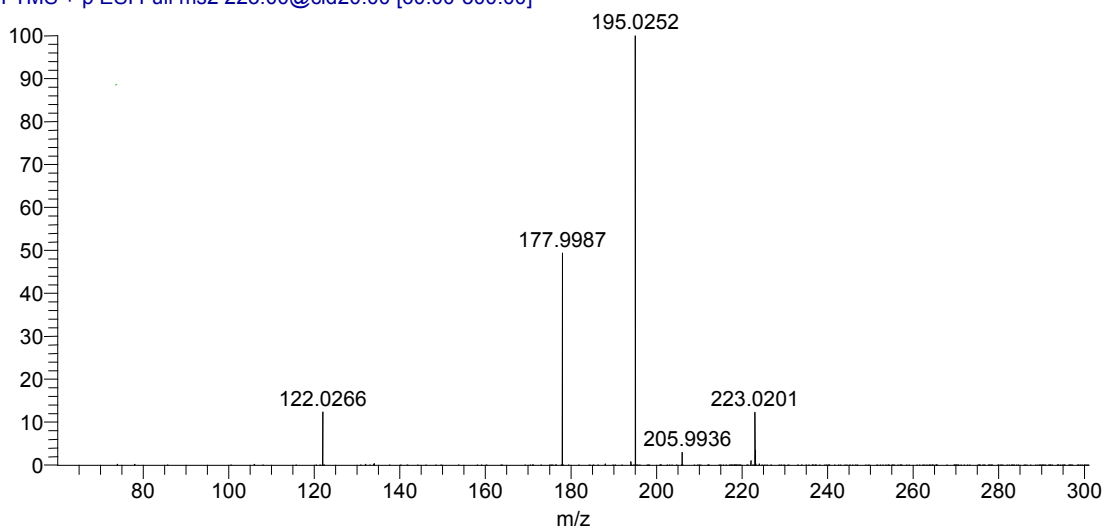
a)

T: FTMS + p ESI Full ms3 283.00@cid40.00 223.02@cid20.00 [60.00-300.00]



b)

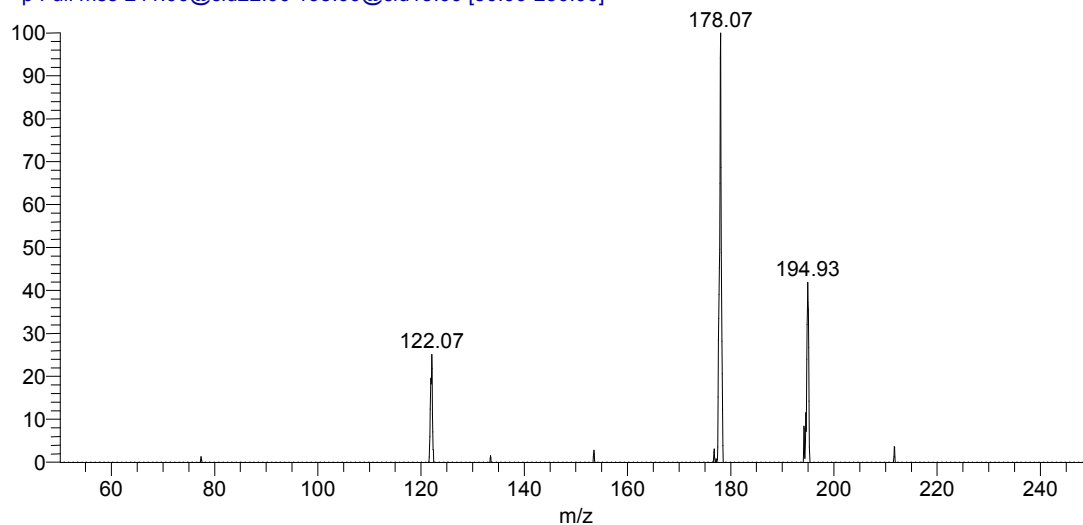
T: FTMS + p ESI Full ms2 223.00@cid20.00 [60.00-300.00]



**Figure S1.** a) HR-(+)ESI MS<sup>3</sup> mass spectrum (CE 20 eV) obtained in the Orbitrap selecting the precursor ion of [CysNO-CysNO+H]<sup>+</sup> (*m/z* 283). b) HR-ESI(+) CID mass spectrum (CE 20 eV) obtained in the Orbitrap selecting the precursor ion of [ox-(Cys-Cys)+H]<sup>+</sup> (*m/z* 223).

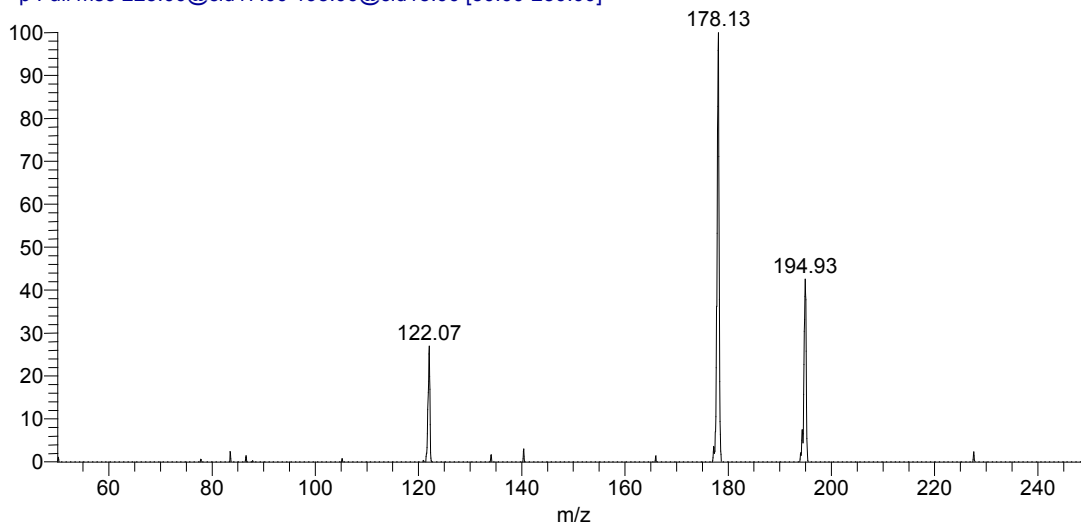
a)

T: + p Full ms3 241.00@cid22.00 195.00@cid15.00 [50.00-250.00]



b)

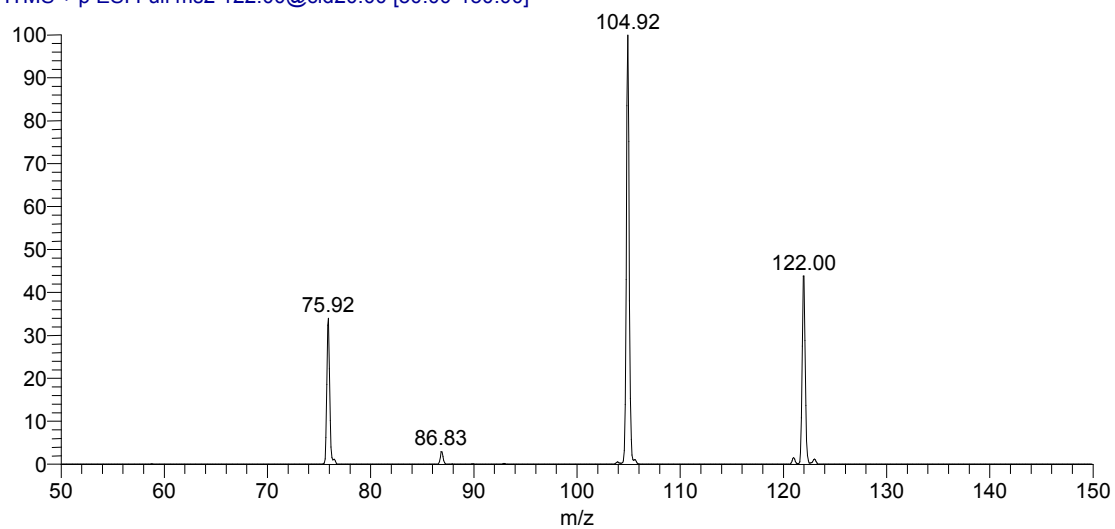
T: + p Full ms3 223.00@cid17.00 195.00@cid15.00 [50.00-250.00]



**Figure S2.** ESI(+)- CID MS<sup>3</sup> mass spectra (CE 15 eV) obtained in the LCQ selecting the precursor ion of  $m/z$  195.00 a) after dissociation of  $[(\text{Cys})_2+\text{H}]^+$  ( $m/z$  241) and b) after dissociation of  $[\text{ox}-(\text{Cys}-\text{Cys})+\text{H}]^+$  ( $m/z$  223).

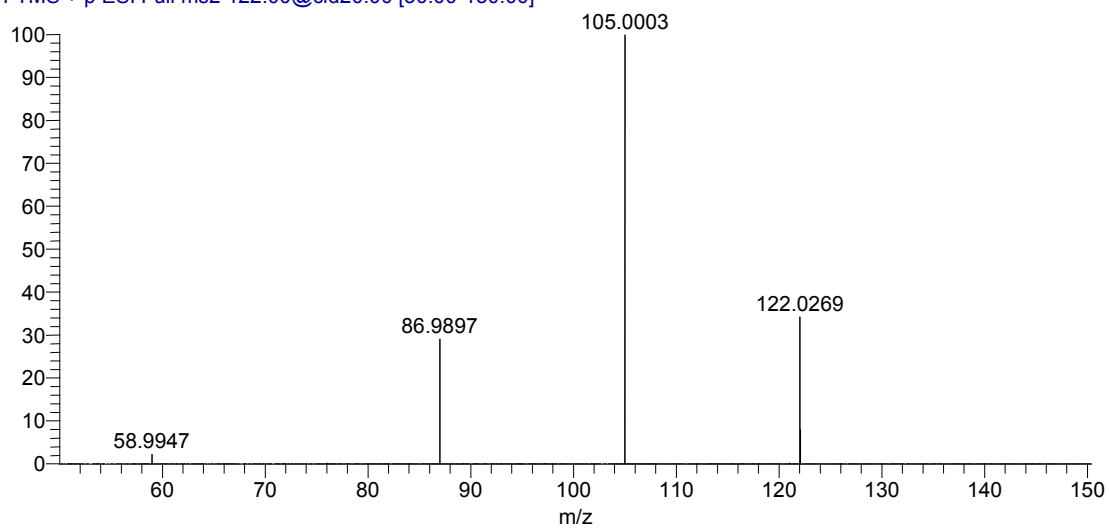
a)

T: ITMS + p ESI Full ms2 122.00@cid20.00 [50.00-150.00]



b)

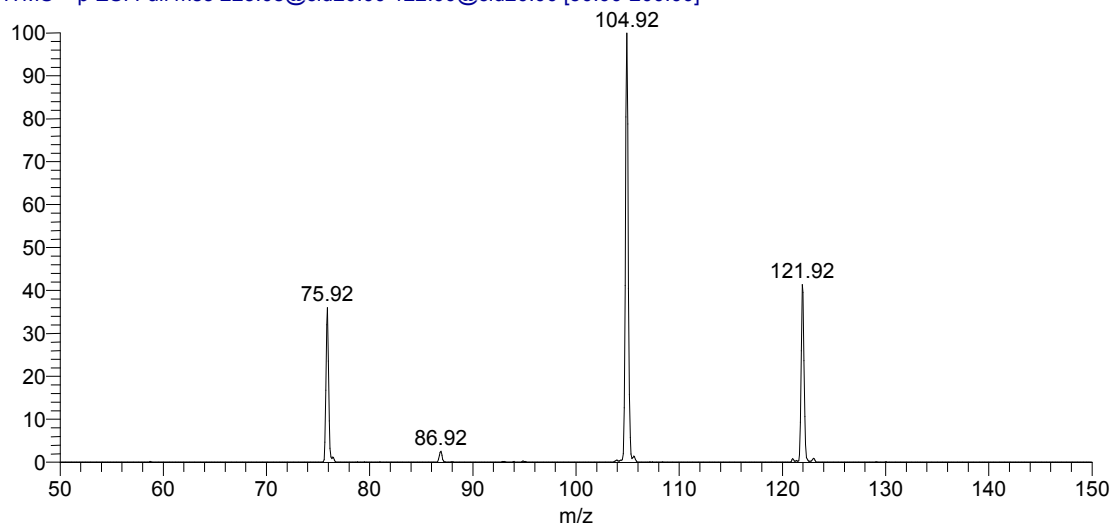
T: FTMS + p ESI Full ms2 122.00@cid20.00 [50.00-150.00]



**Figure S3.** ESI(+)-CID mass spectra (CE 20 eV) obtained in the Orbitrap selecting the precursor ion of [Cys+H]<sup>+</sup> (*m/z* 122) with both low a) and high b) resolution and accuracy.

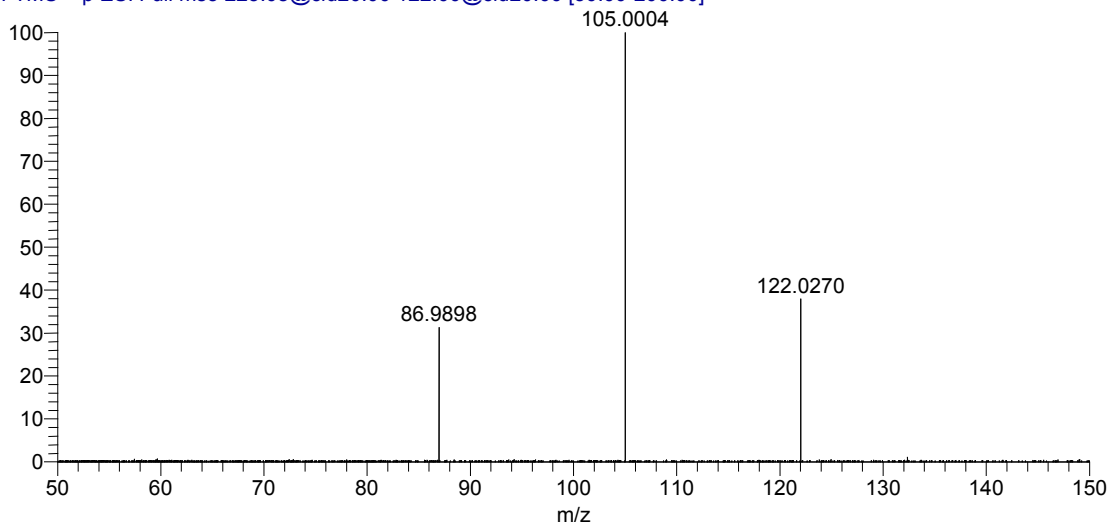
a)

T: ITMS + p ESI Full ms3 223.08@cid20.00 122.00@cid20.00 [50.00-200.00]



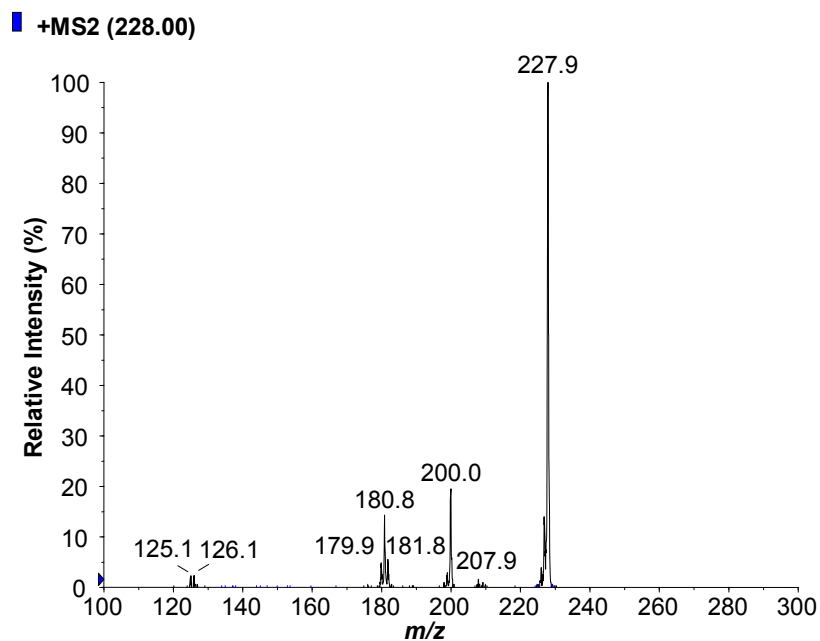
b)

T: FTMS + p ESI Full ms3 223.08@cid20.00 122.00@cid20.00 [50.00-200.00]



**Figure S4.** ESI(+)-CID MS<sup>3</sup> (CE 20 eV) mass spectrum obtained in the Orbitrap selecting the precursor ion of  $m/z$  122.00 after dissociation of  $[\text{ox}-(\text{Cys-Cys})+\text{H}]^+$  ( $m/z$  223) with both low a) and high b) resolution and accuracy.

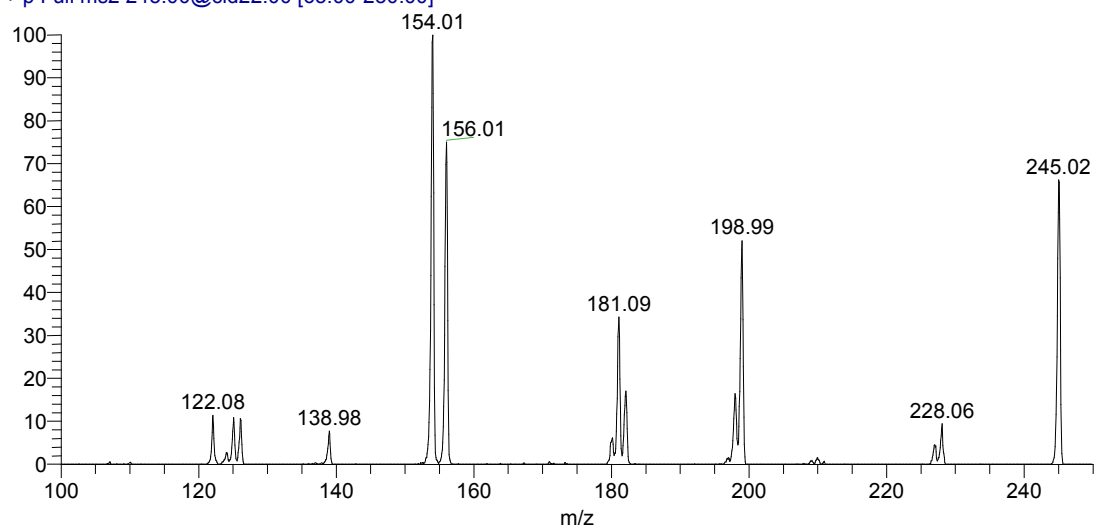
There is a difference between the conditions in the collision cell when using the ion trap (low resolution) (Figures S3a and S4a) and the Orbitrap (high resolution) (Figures S3b and S4b), namely the pressure. Therefore, the activation conditions of the ions are not the same. Taking that into account, it is not surprising to obtain differences in the product ion abundances. The ion of  $m/z$  75.92 may be a product ion obtained from some of the other ions seen in the spectrum and the ion activation conditions may not be enough to produce it at high resolution.



**Figure S5.** ESI(+)-CID mass spectrum obtained in the 2000-Qtrap selecting the precursor ion of [ox-(Cys-Cys)- $d_4$ +D]<sup>+</sup> ( $m/z$  228).

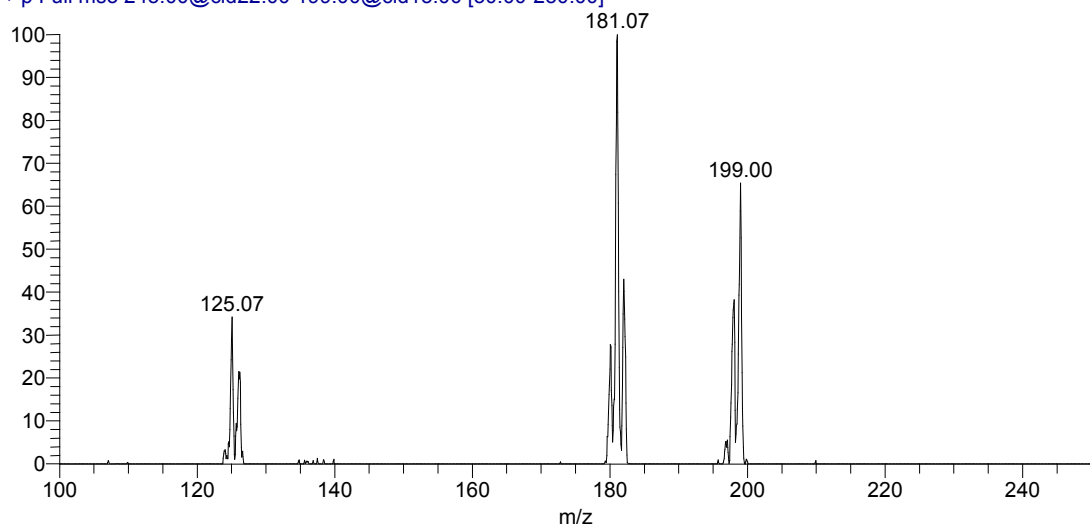
a)

T: + p Full ms2 245.00@cid22.00 [65.00-250.00]



b)

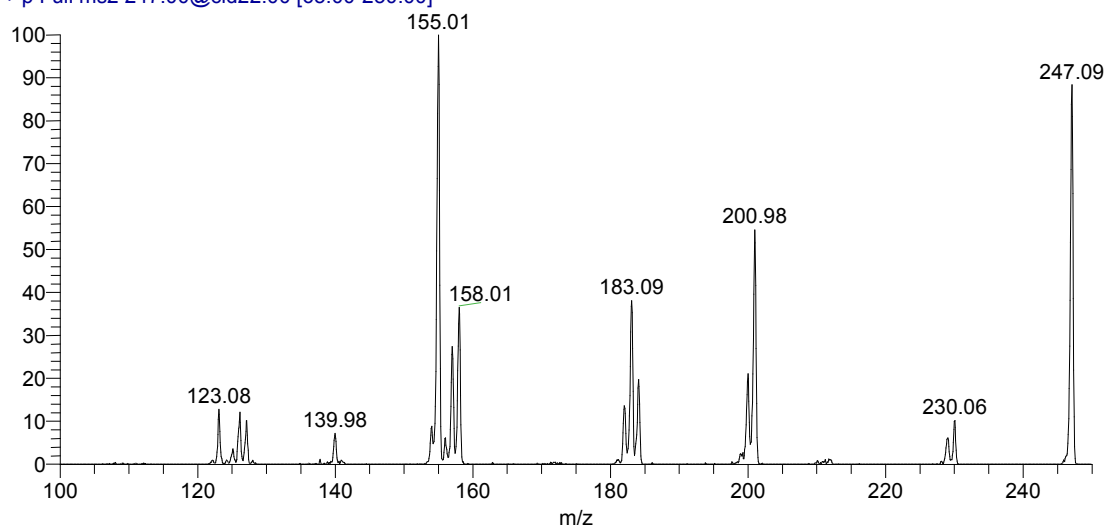
T: + p Full ms3 245.00@cid22.00 199.00@cid15.00 [50.00-250.00]



**Figure S6.** a) ESI(+)-CID mass spectrum (CE 22 eV) obtained in the LCQ selecting the precursor ion of protonated cystine- $d_4$  ( $m/z$  241). b) CID MS<sup>3</sup> (CE 15 eV) selecting the precursor ion of  $m/z$  199.00.

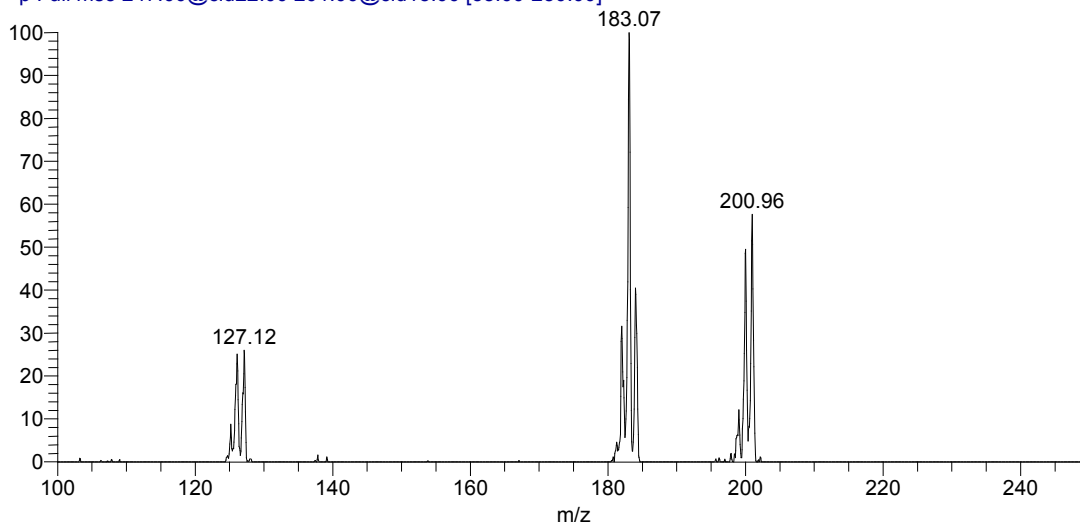
a)

T: + p Full ms2 247.00@cid22.00 [65.00-250.00]



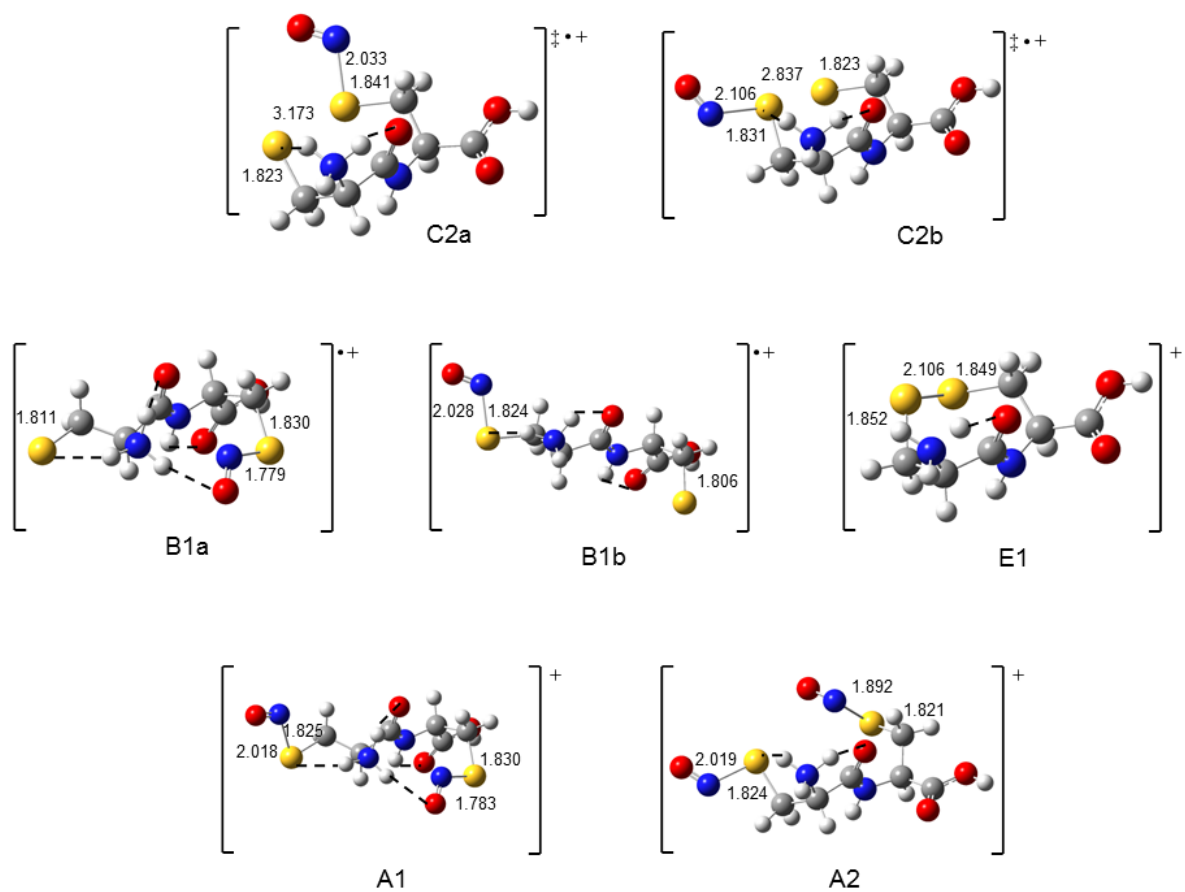
b)

T: + p Full ms3 247.00@cid22.00 201.00@cid15.00 [55.00-250.00]

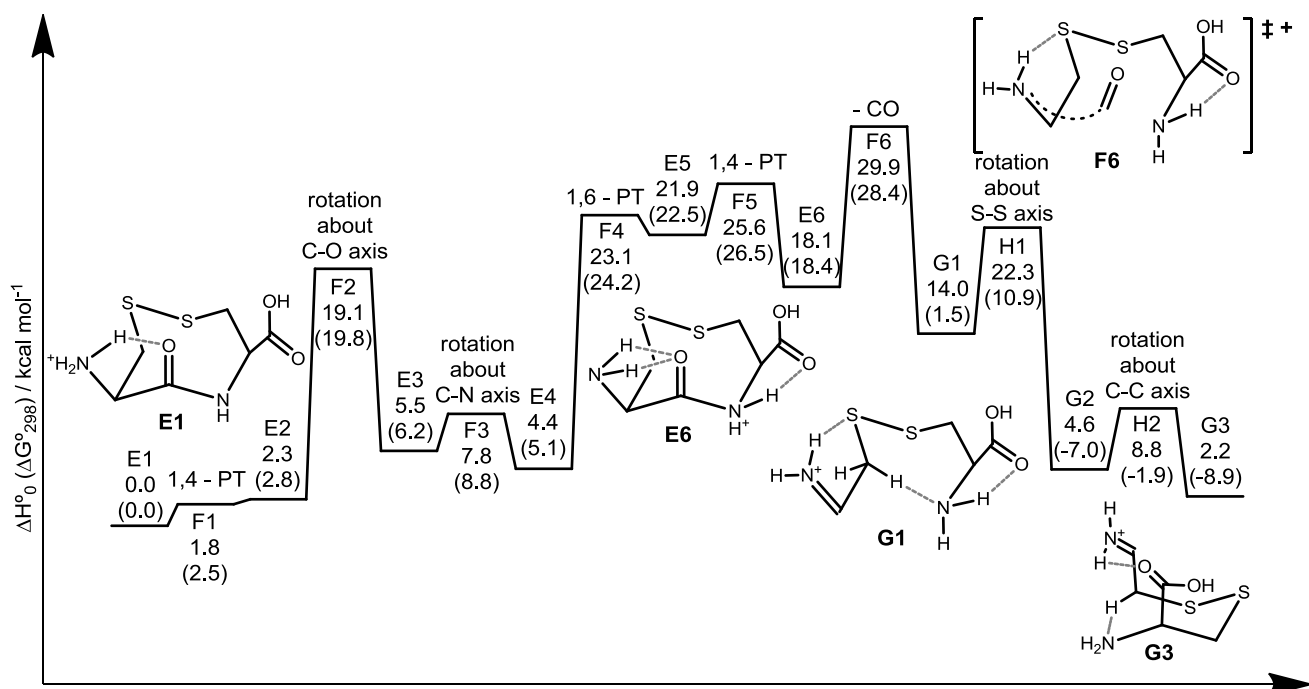


**Figure S7.** a) ESI (+)-CID mass spectrum (CE 22 eV) obtained in the LCQ selecting the precursor ion of protonated cystine- $d_6$  ( $m/z$  243). b) CID MS<sup>3</sup> (CE 15 eV) selecting the precursor ion of  $m/z$  201.00.

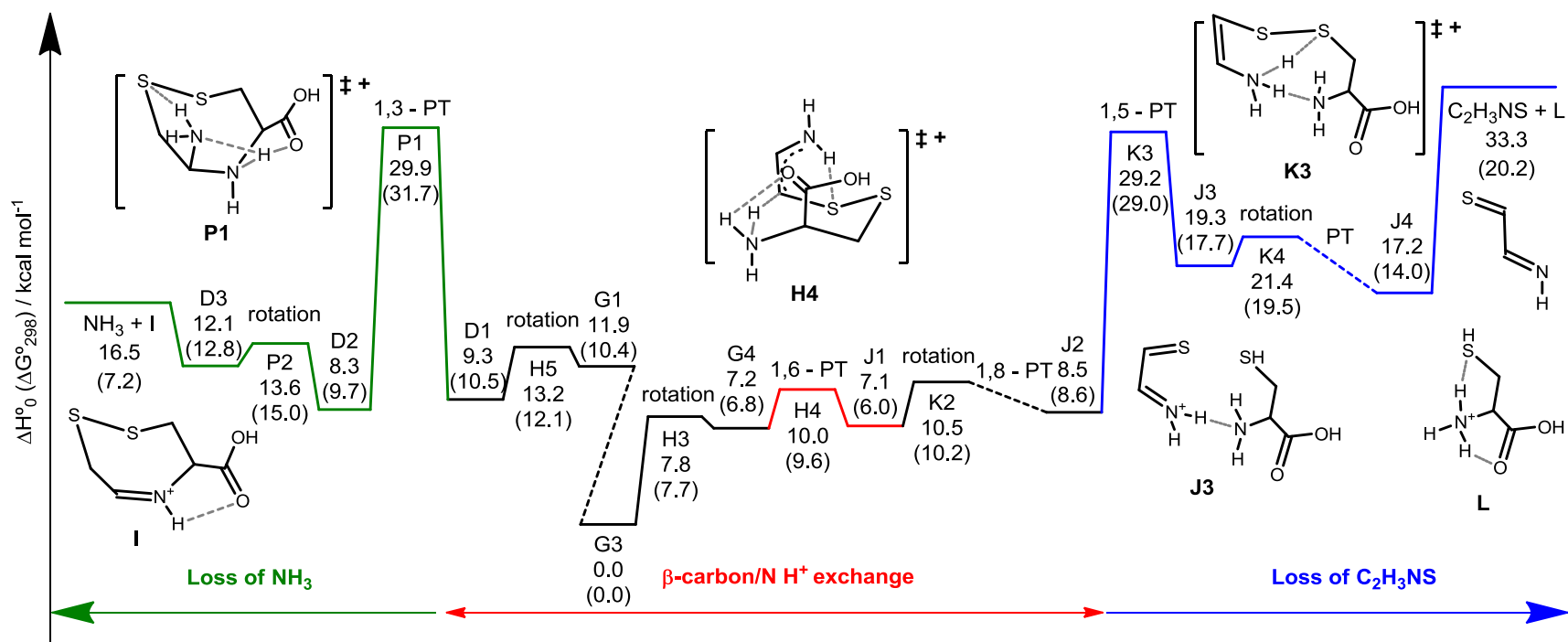




**Figure S8.** Optimized structures of  $[\text{CysNO-CysNO+H}]^+$  (A1-A2), the radical cations  $[\text{Cys}^\bullet\text{-CysNO+H}]^+$  (B1a) and  $[\text{CysNO-CysS}^\bullet\text{+H}]^+$  (B1b) and the transition state structures (C2a and C2b) leading to formation of  $[\text{ox-(Cys-Cys)+H}]^+$  (E1). Relevant distances for bonds involving the sulfur atoms are given in Å.



**Figure S9.** Fragmentation pathway for the loss of CO starting from structure **E1**. The energetic contribution of the CO molecule lost from structure **G1** onwards is considered although not shown for simplicity in the diagram. The enthalpies at 0K ( $\Delta H^\circ_0$ ) and free energies at 298K ( $\Delta G^\circ_{298}$ , in parentheses) are given in kcal mol<sup>-1</sup> relative to structure **E1**. Transition state structures **F<sub>n</sub>** are associated with rearrangements and dissociation of protonated ox-(Cys-Cys), *m/z* 223; structures **H<sub>n</sub>** are transition states associated with rearrangements and dissociation of the *m/z* 195 ion.



**Figure S10.** Energy barriers and pathways after the loss of CO starting from the structure **G3**: proton exchange between the  $\beta$ -carbon and the nitrogen (middle in red); loss of ammonia (left side in green) and loss of C<sub>2</sub>H<sub>3</sub>NS (right side in blue). The enthalpies at 0K ( $\Delta H^\circ_0$ ) and free energies at 298K ( $\Delta G^\circ_{298}$ , in parentheses) are given in kcal mol<sup>-1</sup> relative to structure **G3**. The interconversion steps between structures **G1** and **G3** are shown in Figure S9. Proton transfers (PT) that occur with trivial energy barriers are omitted. **P1** and **K3** are the critical transition states leading to product ions **I** and **L** respectively.

#### 4. Total energies of calculated structures

Table S1. Total electronic energies and unscaled zero-point vibrational energies (ZPVE) at the UB3LYP-6-311++G(d,p) level (all data in hartrees)

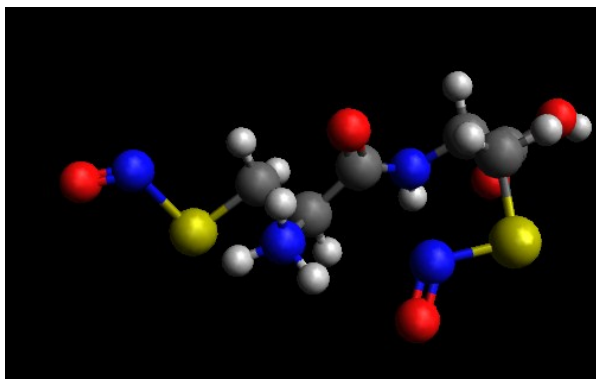
Structure	Electronic energy	ZPVE
A1	-1626.7155512	0.2022544
A2	-1626.7074182	0.2014062
NO	-129.9316566	0.00451
B1a	-1496.7409555	0.1945265
B1b	-1496.7381876	0.1934034
B2a	-1496.7334583	0.1939715
B2b	-1496.7322455	0.1933981
C2a	-1496.7323868	0.1936459
C2b	-1496.7262677	0.1933211
E1	-1366.8251065	0.1880665
E2	-1366.8207582	0.1873304
E3	-1366.8153852	0.1870877
E4	-1366.817142	0.1871719
E5	-1366.7889097	0.1867531
E6	-1366.7948972	0.1867039
F1	-1366.8184777	0.1843216
F2	-1366.7920325	0.1854346
F3	-1366.8111421	0.1864675
F4	-1366.7863407	0.1861738
F5	-1366.7791376	0.1829587
F6	-1366.771983	0.1825235
CO	-113.3490503	0.0050387
G1	-1253.444685	0.1740044
G2	-1253.4609771	0.1752697

G3	-1253.465333	0.1757346
G4	-1253.4525797	0.1744234
H1	-1253.4308659	0.1734022
H2	-1253.4542308	0.1752241
H3	-1253.4511668	0.1739896
H4	-1253.4443912	0.1707908
H5	-1253.442274	0.1737388
D1	-1253.4534325	0.1786555
D2	-1253.455114	0.1787513
D3	-1253.4483819	0.1781089
P1	-1253.4188401	0.1768857
P2	-1253.4453187	0.1774722
I	-1196.8517304	0.1368107
NH3	-56.582722	0.0342648
J1	-1253.4535447	0.1752628
J2	-1253.45213	0.1760985
J3	-1253.4302477	0.1714224
J4	-1253.4331714	0.1709986
K2	-1253.4483327	0.1755392
K3	-1253.4134717	0.1704385
K4	-1253.4249367	0.1695195
L	-722.4259278	0.1219837
C2H3NS	-530.9805622	0.0480119

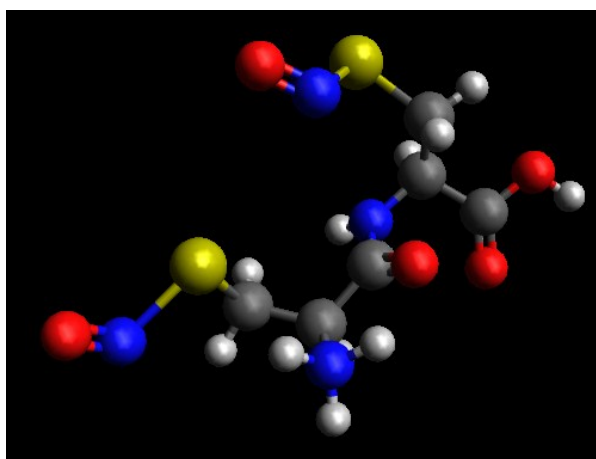
## 10. Cartesian coordinates of calculated structures

B3LYP/6-311++G(d,p) fully optimized geometries, given in standard XYZ format: coordinates are Cartesian coordinates in the usual order, units are ångstroms, first line is molecule name, second line indicates total number of atoms.

```
A1
28
C          0.08449      -0.30541      0.56228
O          0.19314      -0.04056      1.75077
C          1.26744       0.05174     -0.36790
C          2.42710     -0.94692     -0.22095
N          1.70430       1.41731      0.10596
H          0.96968       0.15479     -1.41145
H          2.68222       1.57502     -0.18231
H          1.10236       2.16391     -0.26642
H          2.12343     -1.89698     -0.66147
H          2.65035     -1.11897      0.83880
S          3.96856     -0.37616     -1.01378
N          5.00062     -0.55138      0.71192
O          6.12551     -0.35385      0.65837
H          1.62060       1.41731      1.13541
N         -0.99578     -0.84122     -0.02535
C         -2.27653     -0.99868      0.65077
H         -1.01102     -1.05506     -1.01796
C         -3.19848     -1.71868     -0.33519
C         -2.86173      0.34830      1.14777
H         -2.16090     -1.63528      1.53415
O         -4.38703     -1.97688      0.21402
O         -2.87398     -2.00153     -1.45972
H         -2.22216      0.75561      1.92931
H         -3.85680      0.18570      1.56189
S         -3.04399      1.63247     -0.14381
H         -4.94655     -2.43481     -0.43469
N         -1.32432      2.10026     -0.10848
O         -0.94413      2.91421     -0.90253
```



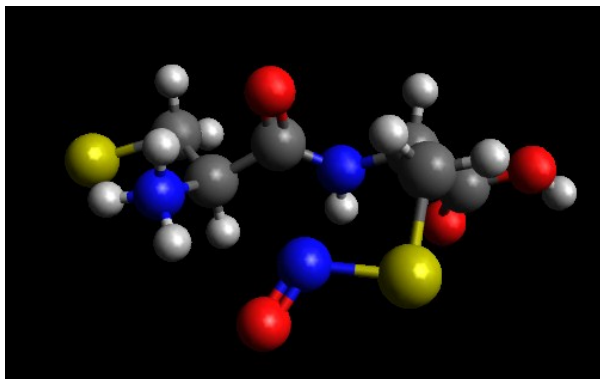
```
A2
28
C          0.29672     -1.09204      0.21408
O          0.66083     -1.11157      1.38468
C         -1.04991     -1.79411     -0.12994
C         -2.06429     -1.01081     -0.97996
N         -1.61203     -2.13405      1.22359
H         -0.80137     -2.73421     -0.62971
H         -1.96982     -3.08604      1.29991
H         -2.35160     -1.45313      1.46036
H         -2.87432     -1.67535     -1.30409
H         -1.57739     -0.64219     -1.88305
S         -2.84892      0.37907     -0.09762
N         -4.69130     -0.35576     -0.47469
O         -5.57707      0.29142     -0.15445
H         -0.79900     -1.97157      1.87309
N         0.98838     -0.55645     -0.79952
C         2.38298     -0.12974     -0.65818
H         0.63511     -0.66045     -1.73828
C         3.24317     -1.34855     -0.26111
C         2.56492      1.09648      0.25683
H         2.71840      0.14541     -1.66224
O         4.48593     -0.97116      0.06311
O         2.85663     -2.48583     -0.29553
```



H	3.62870	1.28989	0.38245
H	2.12782	0.91966	1.24119
S	1.80382	2.61015	-0.41190
H	5.01392	-1.76293	0.25592
N	0.31809	2.54087	0.75777
O	-0.46287	3.40387	0.65923

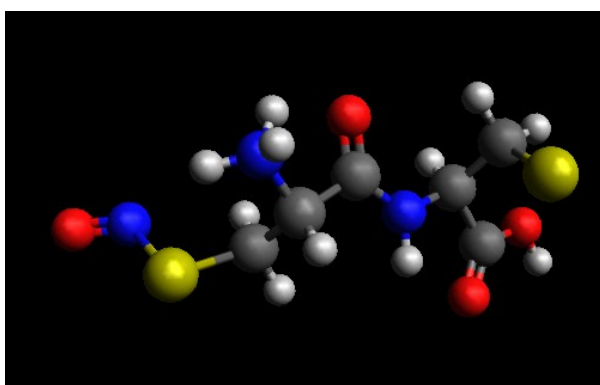
B1a  
26

C	0.64577	-0.39712	0.67890
O	0.70261	-0.11345	1.86624
C	1.90822	-0.14910	-0.17872
C	3.00267	-1.19628	0.10793
N	2.39105	1.21424	0.24851
H	1.69725	-0.09366	-1.24694
H	3.39735	1.28801	0.01848
H	1.86466	1.97319	-0.20633
H	2.71343	-2.15583	-0.32675
H	3.09373	-1.35830	1.19053
S	4.65511	-0.73281	-0.46916
H	2.24516	1.28532	1.26761
N	-0.43244	-0.86745	0.03419
C	-1.76262	-0.91344	0.62745
H	-0.40160	-1.10321	-0.95314
C	-2.66763	-1.59562	-0.40073
C	-2.28014	0.48624	1.04845
H	-1.75080	-1.52973	1.53243
O	-3.90445	-1.75460	0.07340
O	-2.29102	-1.93074	-1.49430
H	-1.66434	0.87316	1.85900
H	-3.30876	0.40698	1.40017
S	-2.28521	1.73623	-0.28815
H	-4.45258	-2.19011	-0.60011
N	-0.54387	2.07305	-0.15366
O	-0.04874	2.82410	-0.94793



B1b  
26

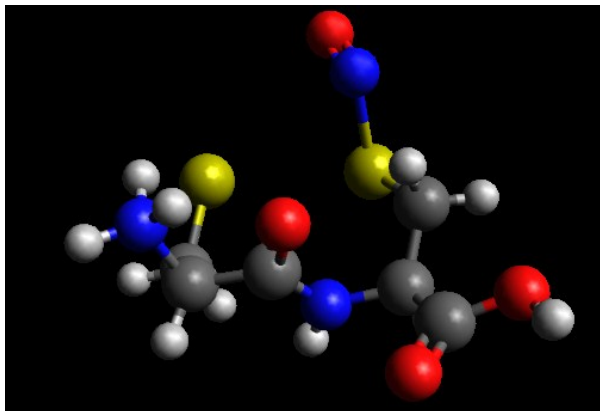
C	0.05654	-0.63464	0.37986
O	0.04926	-1.24629	1.44718
C	-1.20057	-0.74605	-0.52172
C	-2.11136	0.48949	-0.35747
N	-1.90225	-1.97807	-0.01502
H	-0.94625	-0.90434	-1.56966
H	-2.92377	-1.84427	-0.08192
H	-1.64491	-2.81938	-0.53446
H	-1.64804	1.33064	-0.87273
H	-2.21140	0.75658	0.70187
S	-3.80023	0.23798	-0.99972
N	-4.61808	0.76665	0.77919
O	-5.75665	0.83901	0.81856
H	-1.56881	-2.08906	0.96836
N	1.03464	0.15179	-0.06127
C	2.25697	0.42704	0.69011
H	0.97648	0.62366	-0.95927
C	2.91390	1.62035	-0.00403
C	3.19954	-0.79349	0.79809
H	1.99082	0.73349	1.70753
O	4.02890	1.99473	0.62516
O	2.46550	2.14257	-0.99338
H	2.70894	-1.57102	1.39297
H	4.10049	-0.50969	1.34836
S	3.68513	-1.55388	-0.76694



H	4.42161	2.74893	0.15596
---	---------	---------	---------

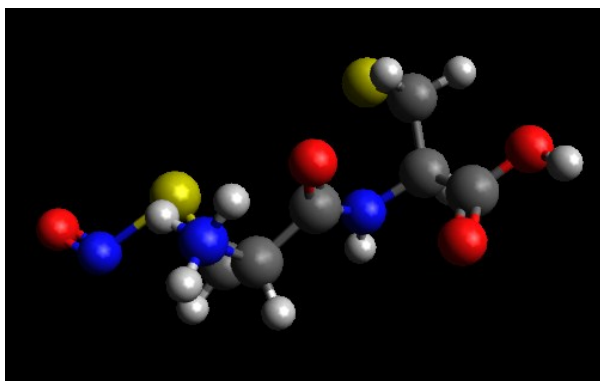
B2a

26			
C	0.15102	-1.33543	0.23344
O	0.39314	-1.02143	1.39260
C	-1.06156	-2.26303	-0.04205
C	-2.04371	-1.69246	-1.08216
N	-1.73662	-2.35328	1.29891
H	-0.71658	-3.26199	-0.32061
H	-2.13742	-3.26753	1.50818
H	-2.46746	-1.61353	1.31499
H	-2.86960	-2.39405	-1.24651
H	-1.55041	-1.57900	-2.04836
S	-2.79100	-0.12115	-0.54563
H	-1.01154	-2.07254	1.99408
N	0.81900	-0.88683	-0.83649
C	1.81381	0.17577	-0.75025
H	0.59154	-1.24277	-1.75147
C	3.09120	-0.34365	-0.06037
C	1.26409	1.46799	-0.10447
H	2.10455	0.40287	-1.77960
O	3.91313	0.67557	0.23390
O	3.32626	-1.50158	0.13766
H	1.97372	2.27385	-0.28713
H	1.13713	1.35107	0.97312
S	-0.36117	1.97167	-0.78327
H	4.72606	0.31777	0.62635
N	-1.00812	2.58169	1.03654
O	-2.02680	3.10136	1.06356



B2b

26			
C	0.31793	-0.80149	0.14694
O	0.65475	-0.93209	1.32045
C	-1.02078	-1.46152	-0.29541
C	-2.03929	-0.55103	-1.00405
N	-1.57566	-2.00709	0.99264
H	-0.77583	-2.31080	-0.93821
H	-1.89118	-2.97512	0.93463
H	-2.34323	-1.39635	1.31512
H	-2.85561	-1.15266	-1.42138
H	-1.55592	-0.04369	-1.83899
S	-2.80668	0.68572	0.09496
N	-4.65790	0.03022	-0.37318
O	-5.53573	0.62392	0.05470
H	-0.77373	-1.89879	1.66783
N	1.02405	-0.16617	-0.79197
C	2.38945	0.31523	-0.57144
H	0.67872	-0.15005	-1.73906
C	3.31320	-0.89041	-0.30824
C	2.48471	1.42423	0.49683
H	2.71609	0.74252	-1.52301
O	4.53979	-0.47708	0.03801
O	2.98625	-2.03912	-0.43915
H	3.52320	1.75507	0.58015
H	2.20321	1.04484	1.48269
S	1.46910	2.87833	0.15196
H	5.11049	-1.25348	0.15718

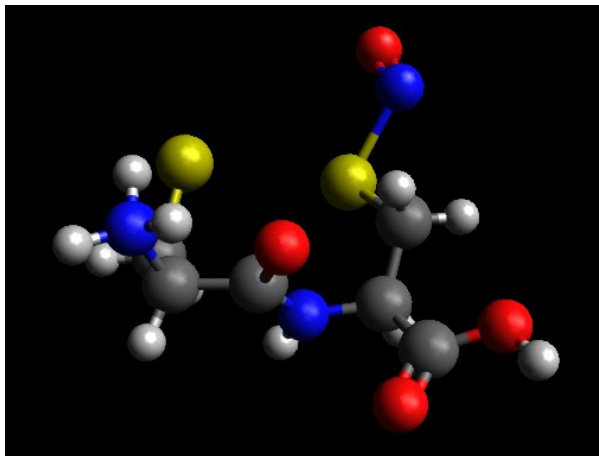


C2a

26			
C	0.19206	-1.49953	0.16356

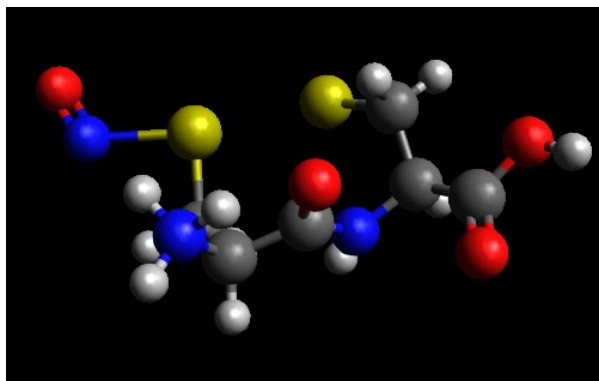


O	0.50461	-1.32771	1.33519
C	-1.01859	-2.41535	-0.15116
C	-2.09185	-1.73005	-1.01998
N	-1.58596	-2.71543	1.20887
H	-0.67989	-3.35359	-0.59780
H	-1.95637	-3.66001	1.31230
H	-2.32479	-2.00278	1.38291
H	-2.90565	-2.43148	-1.23616
H	-1.67295	-1.44744	-1.98652
S	-2.84632	-0.29020	-0.19503
H	-0.81792	-2.51650	1.88436
N	0.77608	-0.89133	-0.87847
C	1.71985	0.21165	-0.70571
H	0.51621	-1.14656	-1.81834
C	3.05047	-0.31022	-0.12839
C	1.10867	1.37225	0.10251
H	1.95260	0.57368	-1.71123
O	3.80793	0.70897	0.30545
O	3.37232	-1.46405	-0.12120
H	1.76569	2.23849	0.03658
H	0.98498	1.09598	1.14767
S	-0.52890	1.83944	-0.59721
H	4.65669	0.35533	0.61763
N	-0.74937	3.40068	0.68581
O	-1.73035	3.97992	0.60131



C2b

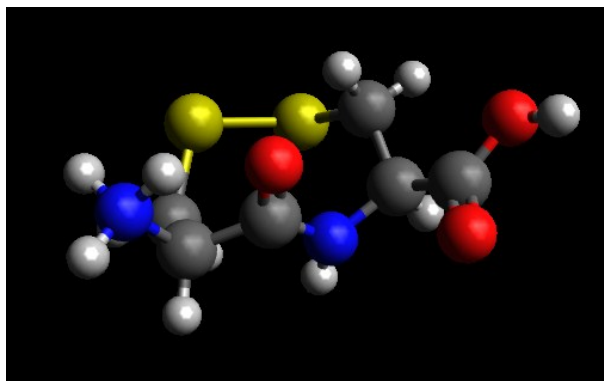
26			
C	0.50419	1.16934	0.13371
O	0.78284	1.36677	-1.04621
C	-0.83551	1.75402	0.66101
C	-1.80515	0.66458	1.15401
N	-1.38016	2.47648	-0.54543
H	-0.65921	2.49080	1.44771
H	-1.63468	3.44855	-0.37047
H	-2.17731	1.96949	-0.94475
H	-2.76371	1.11082	1.44082
H	-1.39334	0.18977	2.04448
S	-2.15469	-0.62916	-0.09297
N	-4.19237	-0.09605	-0.11274
O	-4.89218	-0.73535	-0.74266
H	-0.58351	2.39462	-1.23980
N	1.21668	0.42907	0.98296
C	2.21581	-0.53412	0.51321
H	0.87310	0.29864	1.92192
C	3.43793	0.20247	-0.05844
C	1.57695	-1.57400	-0.43503
H	2.57417	-1.05669	1.40403
O	4.21240	-0.65123	-0.74827
O	3.68703	1.35953	0.13004
H	2.28443	-2.38447	-0.62672
H	1.33940	-1.13225	-1.40441
S	0.07620	-2.34784	0.25254
H	5.00155	-0.17533	-1.05361



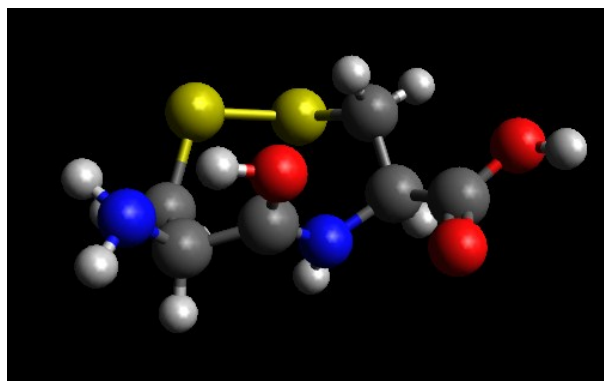
E1

24			
C	0.21708	-1.20258	0.16368
O	-0.13616	-1.51200	-0.96876
C	1.68726	-1.48561	0.56517
C	2.44314	-0.16288	0.80178
N	2.22166	-2.23759	-0.63412
H	1.76321	-2.13876	1.43691

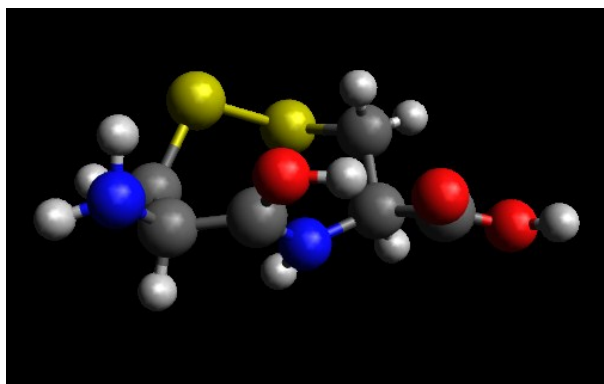
H	2.51122	-3.19244	-0.41824
H	2.99357	-1.75180	-1.09613
H	3.52312	-0.33921	0.82314
H	2.17464	0.24529	1.77650
S	2.16413	1.13250	-0.49273
H	1.38463	-2.24402	-1.28594
N	-0.51285	-0.50254	1.03810
C	-1.56785	0.40322	0.57938
H	-0.11468	-0.30123	1.94294
C	-2.79580	-0.38805	0.09693
C	-1.00978	1.41548	-0.44615
H	-1.90239	0.95243	1.46360
O	-3.61176	0.41296	-0.60842
O	-3.01029	-1.53553	0.36116
H	-1.73208	2.21685	-0.60718
H	-0.80397	0.95029	-1.40872
S	0.51502	2.27207	0.15310
H	-4.40391	-0.09060	-0.85699



E2			
24			
C	0.28296	-1.17565	0.22175
O	-0.09179	-1.47601	-0.96333
C	1.74125	-1.49062	0.56712
C	2.46211	-0.12685	0.75642
N	2.24082	-2.27569	-0.56260
H	1.79147	-2.05465	1.50359
H	2.44296	-3.24017	-0.32332
H	3.05670	-1.87065	-1.00883
H	3.54233	-0.28981	0.72701
H	2.22833	0.30533	1.72978
S	2.11343	1.14487	-0.54877
H	0.72302	-1.95985	-1.34143
N	-0.48214	-0.48826	1.02714
C	-1.57707	0.39148	0.57953
H	-0.10455	-0.28956	1.94408
C	-2.77356	-0.43579	0.08232
C	-1.04089	1.43512	-0.42727
H	-1.91882	0.91456	1.47576
O	-3.68842	0.37904	-0.45862
O	-2.87224	-1.62300	0.20186
H	-1.78094	2.22744	-0.54800
H	-0.85314	0.99981	-1.40782
S	0.49110	2.28785	0.16190
H	-4.45995	-0.14462	-0.73127



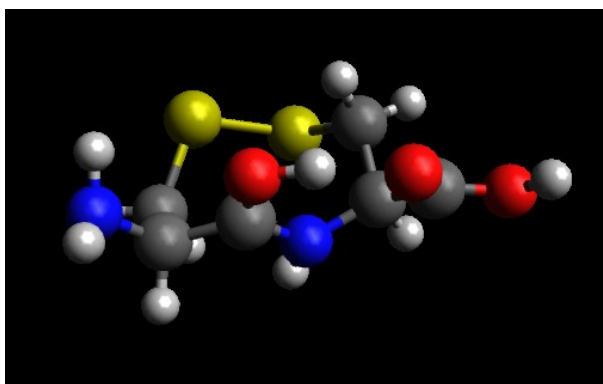
E3			
24			
C	0.34929	-1.23903	0.26117
O	-0.06186	-1.79256	-0.81037
C	1.81211	-1.39689	0.64009
C	2.45223	0.03333	0.72069
N	2.43984	-2.35692	-0.22624
H	1.83003	-1.81102	1.65741
H	3.33332	-2.67157	0.12980
H	2.54023	-2.04413	-1.18538
H	3.53638	-0.08649	0.67437
H	2.22425	0.54202	1.65999
S	2.02638	1.17698	-0.66867
H	-1.07338	-1.71677	-0.92168
N	-0.42861	-0.47665	1.02210
C	-1.55545	0.37774	0.58096
H	0.02056	-0.11796	1.85533



C	-2.71482	-0.43042	0.00782
C	-1.08292	1.43207	-0.45645
H	-1.90752	0.88701	1.47696
O	-3.88386	0.08935	0.31853
O	-2.56925	-1.40692	-0.70758
H	-1.86071	2.19108	-0.56800
H	-0.90325	0.98360	-1.43435
S	0.43237	2.34219	0.06042
H	-4.60151	-0.40723	-0.11370

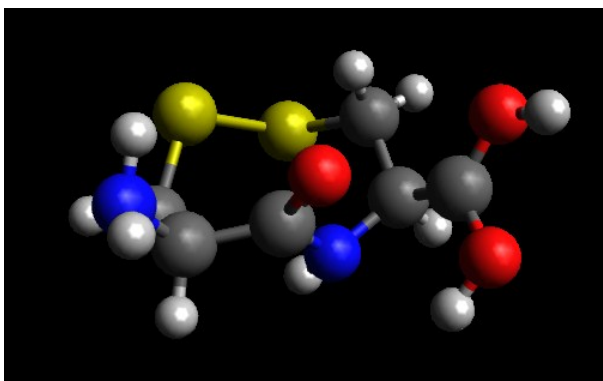
E4  
24

C	0.34384	-1.24198	0.28045
O	-0.08185	-1.85308	-0.75711
C	1.82694	-1.39633	0.64287
C	2.45714	0.02379	0.73179
N	2.58301	-2.24063	-0.23863
H	1.86251	-1.83654	1.64823
H	2.55009	-1.94496	-1.20831
H	2.32817	-3.21919	-0.18288
H	3.53942	-0.10448	0.68401
H	2.22507	0.53217	1.66856
S	2.02798	1.16143	-0.66297
H	-1.09476	-1.77093	-0.86521
N	-0.42581	-0.45397	1.02062
C	-1.55972	0.39031	0.57371
H	0.04546	-0.05130	1.82181
C	-2.71765	-0.42311	0.00839
C	-1.08249	1.43854	-0.46764
H	-1.91396	0.90527	1.46587
O	-3.88340	0.12456	0.27966
O	-2.57725	-1.42840	-0.66809
H	-1.85563	2.20146	-0.58353
H	-0.90194	0.98412	-1.44275
S	0.43755	2.34174	0.05135
H	-4.60166	-0.37591	-0.14698

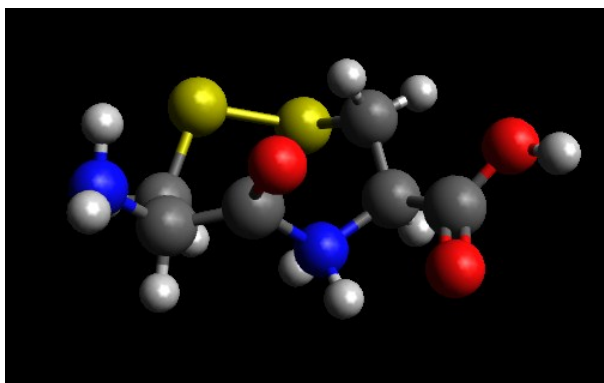


E5  
24

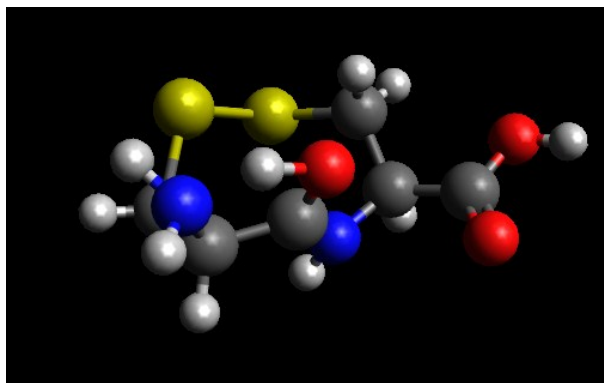
C	0.03494	1.17104	0.23067
O	0.74571	1.38135	-0.74213
C	-1.37003	1.75698	0.42652
C	-2.37540	0.59454	0.64426
N	-1.80796	2.61796	-0.64285
H	-1.35408	2.34360	1.35420
H	-1.74202	2.16759	-1.55023
H	-1.28514	3.48488	-0.68448
H	-3.37749	1.01015	0.52531
H	-2.31421	0.15981	1.64317
S	-2.28536	-0.77668	-0.59411
N	0.52518	0.29282	1.18980
C	1.39703	-0.72776	0.61166
H	-0.12156	-0.05984	1.88441
C	2.53758	0.02794	-0.02831
C	0.68272	-1.70178	-0.36184
H	1.84597	-1.29273	1.43806
O	3.06353	-0.43859	-1.09977
O	3.17145	0.97174	0.58478
H	1.26285	-2.62135	-0.45876
H	0.56963	-1.26129	-1.35064
S	-0.98281	-2.20571	0.23986
H	3.82823	0.08534	-1.40452
H	2.67141	1.28478	1.36204



E6			
24			
C	0.26479	-1.30446	-0.02008
O	-0.29488	-1.59518	-1.01241
C	1.71331	-1.56052	0.41196
C	2.41848	-0.22912	0.77297
N	2.46542	-2.29263	-0.56623
H	1.65787	-2.16440	1.33015
H	2.53232	-1.81267	-1.45807
H	2.11967	-3.23200	-0.72330
H	3.48715	-0.44652	0.81738
H	2.12677	0.16730	1.74729
S	2.22287	1.10649	-0.48524
N	-0.61913	-0.55612	1.07584
C	-1.56132	0.49501	0.52162
H	-0.02924	-0.14458	1.80159
C	-2.80786	-0.28020	0.06515
C	-0.89702	1.44018	-0.48008
H	-1.87865	1.07584	1.39433
O	-3.54217	0.41401	-0.78954
O	-3.06339	-1.36656	0.51936
H	-1.59884	2.24739	-0.69504
H	-0.64720	0.95552	-1.42202
S	0.60911	2.24816	0.22261
H	-4.34934	-0.08177	-1.01123
H	-1.23498	-1.28088	1.48495

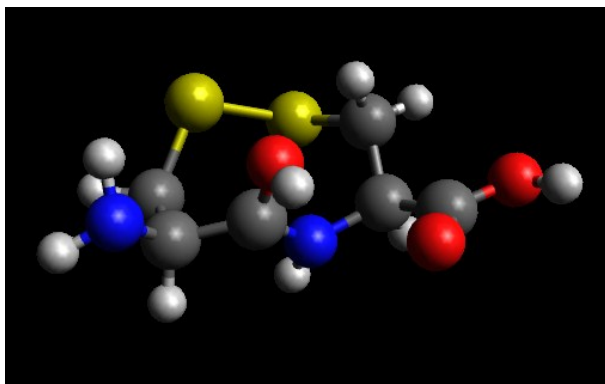


F1			
24			
C	0.24166	-1.18477	0.23614
O	-0.09343	-1.52256	-0.92760
C	1.71273	-1.50027	0.57473
C	2.46978	-0.16713	0.77482
N	2.13313	-2.25421	-0.63155
H	1.79976	-2.12333	1.46765
H	2.36653	-3.22593	-0.44664
H	2.89601	-1.81748	-1.14325
H	3.54737	-0.35026	0.75133
H	2.24019	0.25854	1.75225
S	2.15492	1.11683	-0.52599
H	0.93692	-2.05224	-1.20383
N	-0.50628	-0.47451	1.05131
C	-1.57395	0.41890	0.57770
H	-0.11682	-0.25587	1.95769
C	-2.78410	-0.39004	0.08307
C	-1.00736	1.43076	-0.44477
H	-1.91714	0.96693	1.45865
O	-3.65441	0.42669	-0.52788
O	-2.93289	-1.56452	0.26039
H	-1.72950	2.23369	-0.59854
H	-0.80918	0.96833	-1.41074
S	0.52797	2.27211	0.15239
H	-4.43508	-0.08598	-0.79466

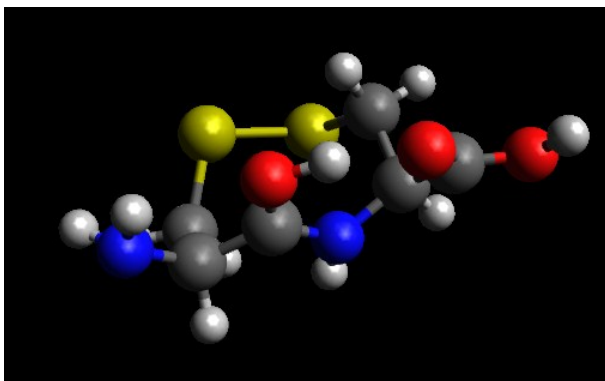


F2			
24			
C	0.33221	-1.15675	0.20304
O	-0.06923	-1.37208	-1.03014
C	1.76425	-1.46408	0.58722
C	2.48829	-0.06588	0.67981
N	2.29876	-2.44472	-0.32290
H	1.76769	-1.89790	1.59369
H	3.11434	-2.91220	0.05325

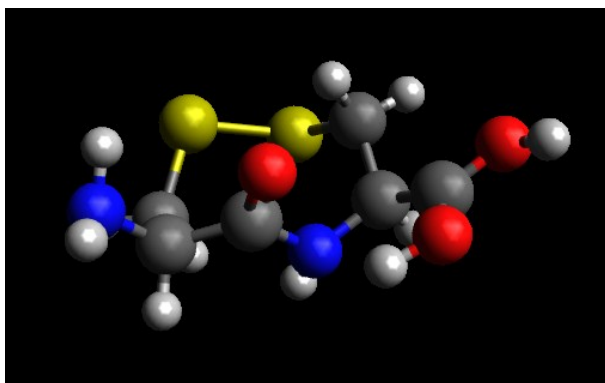
H	2.51865	-2.06636	-1.23825
H	3.56016	-0.23787	0.55927
H	2.33500	0.40061	1.65510
S	2.05684	1.17506	-0.62855
H	-0.53426	-2.21754	-1.15409
N	-0.42109	-0.46595	1.00485
C	-1.56718	0.37244	0.59740
H	-0.03096	-0.25000	1.91611
C	-2.72503	-0.48749	0.07386
C	-1.08307	1.45865	-0.39667
H	-1.91558	0.85974	1.50980
O	-3.78031	0.29052	-0.16733
O	-2.67951	-1.67862	-0.08307
H	-1.84146	2.24045	-0.46052
H	-0.92312	1.05094	-1.39345
S	0.46187	2.31225	0.15700
H	-4.51789	-0.25210	-0.49336



F3			
24			
C	0.34176	-1.22923	0.27336
O	-0.08024	-1.80149	-0.78745
C	1.79360	-1.40117	0.66349
C	2.45271	0.01008	0.71979
N	2.48243	-2.34309	-0.18462
H	1.77648	-1.77485	1.70316
H	3.36838	-2.00551	-0.53374
H	1.93054	-2.71923	-0.94318
H	3.53687	-0.11896	0.68589
H	2.23024	0.52835	1.65423
S	2.03279	1.14341	-0.68077
H	-1.09831	-1.72446	-0.89284
N	-0.43505	-0.46499	1.03213
C	-1.55422	0.39404	0.58183
H	0.01978	-0.10067	1.86068
C	-2.71380	-0.41089	0.00595
C	-1.06888	1.44263	-0.45735
H	-1.90886	0.90854	1.47381
O	-3.88088	0.12333	0.29239
O	-2.56901	-1.40076	-0.69335
H	-1.83738	2.21100	-0.56838
H	-0.89618	0.99049	-1.43486
S	0.45968	2.33363	0.05508
H	-4.59859	-0.37213	-0.14139



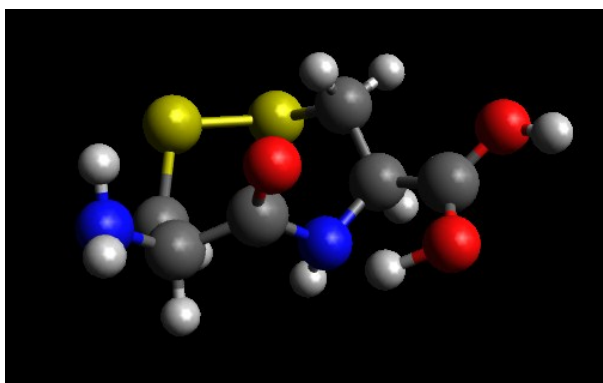
F4			
24			
C	-0.21736	1.25442	0.12714
O	0.32730	1.57619	-0.91112
C	-1.68410	1.56206	0.46836
C	-2.44453	0.23689	0.73625
N	-2.36365	2.34466	-0.53517
H	-1.69740	2.12807	1.40911
H	-2.24939	1.94971	-1.46366
H	-2.03277	3.30202	-0.56640
H	-3.51101	0.46717	0.71641
H	-2.21403	-0.19928	1.70919
S	-2.21435	-1.07380	-0.54531
H	2.18171	1.95481	0.44742
N	0.52105	0.52771	1.07259
C	1.47223	-0.45720	0.57760
H	0.01530	0.21033	1.88955
C	2.71708	0.20941	0.05799



C	0.88579	-1.47538	-0.45431
H	1.82499	-1.03345	1.44245
O	3.61403	-0.54806	-0.45928
O	2.96959	1.45698	0.14508
H	1.60326	-2.28061	-0.62019
H	0.67178	-0.98872	-1.40449
S	-0.64539	-2.26505	0.18111
H	4.39941	-0.05709	-0.76982

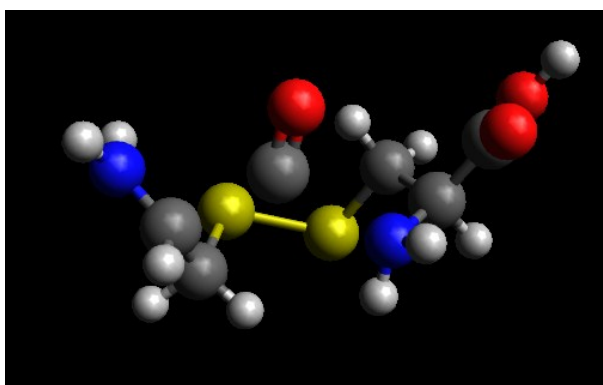
F5  
24

C	0.23043	-1.27104	-0.04517
O	-0.21179	-1.46412	-1.13823
C	1.65547	-1.57267	0.43123
C	2.36137	-0.25294	0.84071
N	2.44454	-2.29170	-0.53467
H	1.57576	-2.18844	1.33831
H	2.48626	-1.81299	-1.42918
H	2.10292	-3.23200	-0.69722
H	3.42305	-0.48232	0.94605
H	2.00761	0.14818	1.79166
S	2.26095	1.09139	-0.42046
N	-0.68431	-0.67862	0.95729
C	-1.50208	0.48788	0.49143
H	-0.24574	-0.50643	1.85799
C	-2.79129	-0.21121	0.06820
C	-0.85820	1.45031	-0.51443
H	-1.76381	1.05888	1.38971
O	-3.68563	0.44483	-0.58746
O	-2.90095	-1.39191	0.44779
H	-1.56579	2.25738	-0.71731
H	-0.60803	0.96788	-1.45694
S	0.63661	2.26102	0.19964
H	-4.47636	-0.09395	-0.77739
H	-1.80554	-1.45500	0.92034



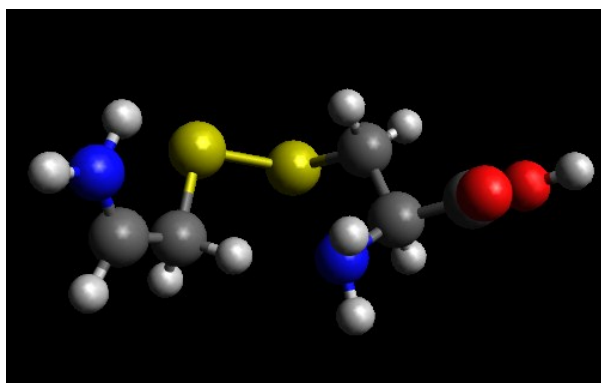
F6  
24

C	-0.52104	1.65979	0.03982
O	0.06760	2.27716	-0.71024
C	-2.51356	1.36300	0.41607
C	-2.52949	-0.07642	0.84565
N	-3.14483	1.72619	-0.69629
H	-2.52559	2.10330	1.21110
H	-3.24576	1.07478	-1.46598
H	-3.32193	2.69988	-0.90210
H	-3.55501	-0.29937	1.15949
H	-1.87650	-0.23174	1.70023
S	-2.09434	-1.28611	-0.48716
N	0.95233	0.49133	1.30714
C	1.81613	-0.43533	0.55844
H	0.48681	0.01308	2.07125
C	2.98259	0.37529	-0.01841
C	1.05690	-1.22523	-0.52042
H	2.27926	-1.15968	1.24241
O	3.71600	-0.35026	-0.86984
O	3.21373	1.51362	0.29513
H	1.73172	-1.94691	-0.98039
H	0.66531	-0.58138	-1.30748
S	-0.34364	-2.22151	0.16470
H	4.46855	0.18427	-1.17215
H	1.52046	1.25221	1.67984



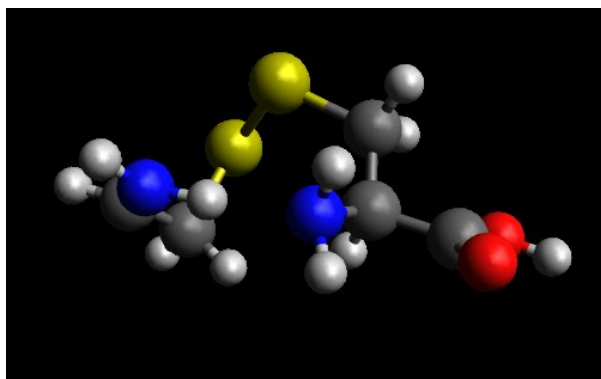
G1  
22

C	3.07785	-1.39008	0.41336
C	2.23438	-0.28619	0.83651
N	3.33695	-1.68427	-0.82137
H	3.49961	-2.05185	1.16735
H	2.98022	-1.10051	-1.57689
H	3.88889	-2.49744	-1.07243
H	2.56286	0.09922	1.80442
H	1.19604	-0.72437	0.98140
S	2.02310	1.03421	-0.42831
N	-0.70475	-1.12617	0.83283
C	-1.67000	-0.06625	0.50471
H	-0.95489	-1.53840	1.72861
C	-2.94624	-0.66832	-0.10474
C	-1.10117	0.96071	-0.49103
H	-1.94667	0.46058	1.42021
O	-3.96688	0.19960	-0.07452
O	-2.99991	-1.77569	-0.57471
H	-1.87386	1.68716	-0.75242
H	-0.75980	0.48483	-1.41203
S	0.27148	1.98148	0.19154
H	-4.74316	-0.21002	-0.49049
H	-0.82263	-1.87762	0.15132



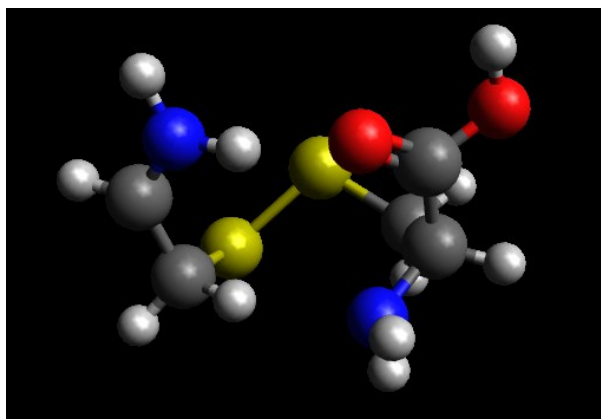
G2  
22

C	-2.68569	1.31259	0.39732
N	-1.93011	1.95256	-0.42701
C	-2.12115	0.37455	1.37091
S	-2.02509	-1.31266	0.50971
S	-0.92884	-0.99954	-1.21930
C	0.84120	-1.00700	-0.71213
C	1.30938	0.18818	0.13464
C	2.83944	0.14621	0.29900
O	3.56823	1.04274	-0.02956
N	0.86741	1.48249	-0.41196
O	3.23583	-1.00266	0.86590
H	-3.76352	1.41252	0.30024
H	-0.86820	1.83403	-0.41651
H	-2.34510	2.53078	-1.15125
H	-2.79693	0.19371	2.20614
H	-1.13942	0.66712	1.73284
H	1.37503	2.22274	0.07262
H	0.89914	0.07749	1.14360
H	1.06420	-1.94062	-0.19930
H	1.35695	-1.02495	-1.67888
H	4.20201	-0.99032	0.96573
H	1.18611	1.55947	-1.37824



G3  
22

C	-2.23356	1.56522	-0.03220
C	-2.09083	0.49505	0.95459
N	-1.21657	2.20035	-0.51117
H	-3.21195	1.80102	-0.44235
H	-0.24809	2.01535	-0.19526
H	-2.96681	0.41731	1.59931
H	-1.15618	0.52545	1.51852
S	-2.11735	-1.10024	-0.04257
H	-1.33558	2.87862	-1.25632
N	0.88410	-0.19372	1.93487
C	1.71769	-0.62088	0.81245



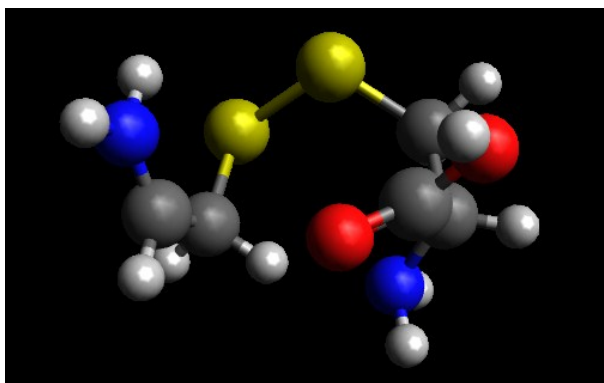
S23



H	0.71080	-0.98476	2.54959
C	2.10500	0.58978	-0.03035
C	0.99370	-1.67185	-0.05681
H	2.65988	-1.09163	1.12573
O	3.19318	0.34934	-0.75678
O	1.50200	1.64370	-0.06389
H	0.60598	-2.47408	0.57279
H	1.70126	-2.11433	-0.76226
S	-0.36445	-1.07112	-1.15663
H	3.39907	1.12667	-1.30207
H	1.36426	0.50745	2.49282

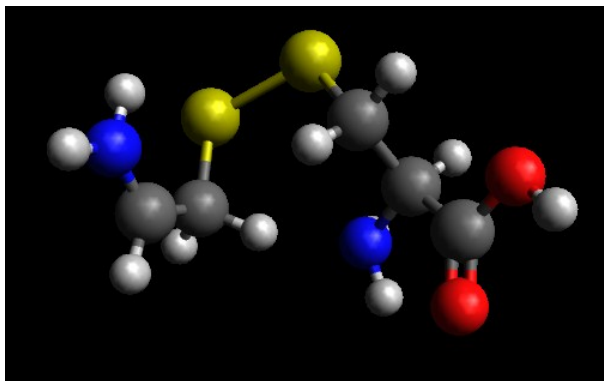
G4  
22

C	-1.83120	1.60831	0.40147
C	-1.68464	0.32484	1.10134
N	-2.19459	1.72576	-0.82606
H	-1.60970	2.52378	0.94438
H	-2.40781	0.88933	-1.37005
H	-2.41212	0.28547	1.92309
H	-0.68291	0.30858	1.57994
S	-1.88166	-1.21413	0.12441
H	-2.25761	2.62840	-1.28415
N	1.19648	-0.35143	1.93477
C	1.88480	-0.46526	0.64864
H	1.25132	-1.23124	2.44028
C	1.81366	0.87572	-0.08242
C	1.26909	-1.58735	-0.21723
H	2.95007	-0.71133	0.75435
O	2.71889	0.93158	-1.06424
O	1.03661	1.76777	0.17154
H	1.07231	-2.47118	0.39202
H	1.97429	-1.87293	-1.00168
S	-0.23858	-1.17574	-1.19333
H	2.64091	1.78259	-1.52441
H	1.63767	0.35396	2.51861



H1  
22

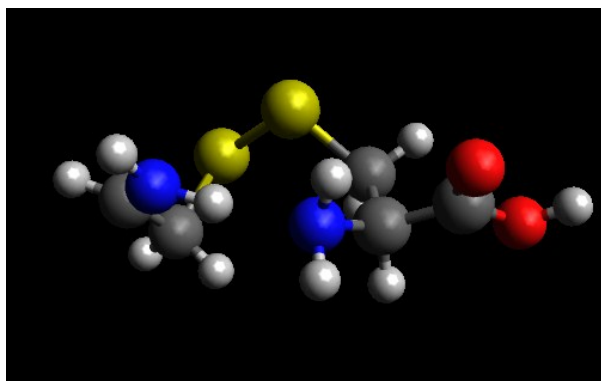
C	-2.10134	1.88842	-0.30086
C	-1.79041	0.97270	0.79871
N	-2.62309	1.50028	-1.41359
H	-1.86868	2.94666	-0.19581
H	-2.88873	0.51280	-1.50141
H	-2.81853	2.13816	-2.17793
H	-2.21411	1.37219	1.72857
H	-0.67716	0.96651	1.01182
S	-2.35589	-0.74168	0.58903
N	1.00892	0.27717	1.55206
C	1.64683	-0.44018	0.44360
H	0.83106	-0.34442	2.33415
C	2.84065	0.37947	-0.05877
C	0.66841	-0.69034	-0.72211
H	2.04262	-1.41002	0.76216
O	3.47579	-0.24282	-1.06264
O	3.15900	1.44882	0.39245
H	1.18238	-1.21115	-1.53451
H	0.29728	0.25026	-1.13600
S	-0.71364	-1.83891	-0.36401
H	4.23705	0.29508	-1.33478
H	1.62527	1.02281	1.87217





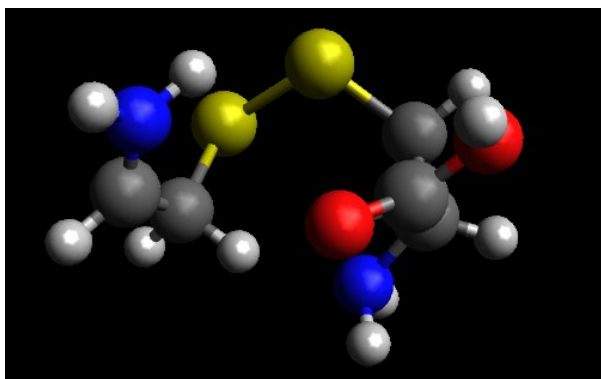
H2  
22

C	-2.82829	1.30815	0.14029
N	-1.86591	1.97922	-0.39445
C	-2.55820	0.24568	1.11167
S	-2.31175	-1.31485	0.07948
S	-0.61078	-0.93514	-1.04419
C	0.77955	-1.11933	0.15242
C	1.50437	0.19625	0.61124
C	2.94704	0.16854	0.08753
O	3.35246	0.89588	-0.78116
N	0.85656	1.45963	0.20553
O	3.67003	-0.78008	0.69631
H	-3.84234	1.48086	-0.20984
H	-0.85357	1.79200	-0.12661
H	-2.05881	2.64269	-1.13808
H	-3.42257	0.02246	1.73592
H	-1.67735	0.42357	1.72475
H	1.17839	2.18870	0.84054
H	1.55090	0.17188	1.70146
H	0.39387	-1.66354	1.01315
H	1.48487	-1.78486	-0.34633
H	4.56618	-0.78932	0.32119
H	1.25966	1.72134	-0.69845



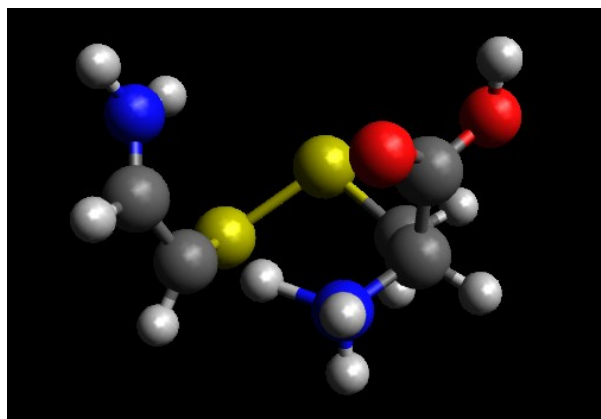
H3  
22

C	-2.04173	1.69090	0.25665
C	-1.91843	0.41774	0.97170
N	-1.62809	1.90171	-0.94377
H	-2.46247	2.54663	0.78199
H	-1.16954	1.15492	-1.47043
H	-2.67711	0.35095	1.75470
H	-0.91659	0.42255	1.48008
S	-2.00393	-1.15728	0.02825
H	-1.67435	2.82254	-1.36625
N	0.89737	-0.23936	1.95600
C	1.74838	-0.54036	0.80257
H	0.83017	-1.05392	2.56057
C	1.97788	0.73613	-0.00265
C	1.13442	-1.63856	-0.08553
H	2.74146	-0.90907	1.09589
O	2.95309	0.56139	-0.90436
O	1.35788	1.76245	0.13711
H	0.82000	-2.49027	0.51996
H	1.87978	-1.99108	-0.80206
S	-0.27936	-1.15355	-1.17010
H	3.08344	1.38658	-1.39832
H	1.30218	0.51129	2.50933



H4  
22

C	-2.14084	1.61910	0.12889
C	-1.85592	0.46966	0.89443
N	-2.18162	1.68593	-1.18056
H	-2.28068	2.56346	0.65029
H	-2.10536	0.84688	-1.74404
H	-2.30342	0.48729	1.88832
H	-0.53062	0.51981	1.28459
S	-1.96737	-1.18121	0.15638
H	-2.31566	2.56468	-1.66043
N	0.71104	0.35349	1.78551
C	1.69378	-0.31532	0.89302

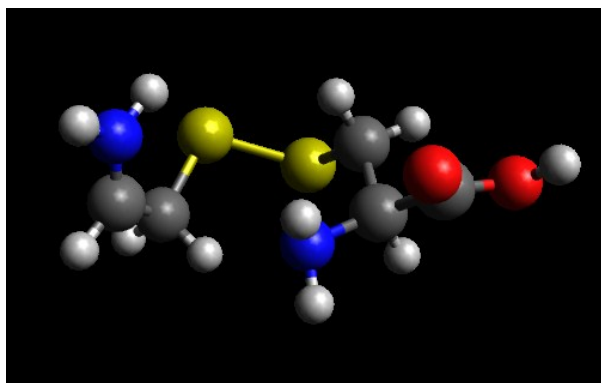


S25

H	0.61160	-0.15959	2.66053
C	2.14550	0.72422	-0.13408
C	1.13665	-1.59837	0.26607
H	2.58307	-0.58929	1.47495
O	2.97780	0.19205	-1.02999
O	1.80558	1.87935	-0.09579
H	0.77479	-2.28379	1.03470
H	1.93721	-2.09962	-0.28103
S	-0.19078	-1.33588	-0.98018
H	3.27408	0.88341	-1.64443
H	1.03752	1.29742	1.99886

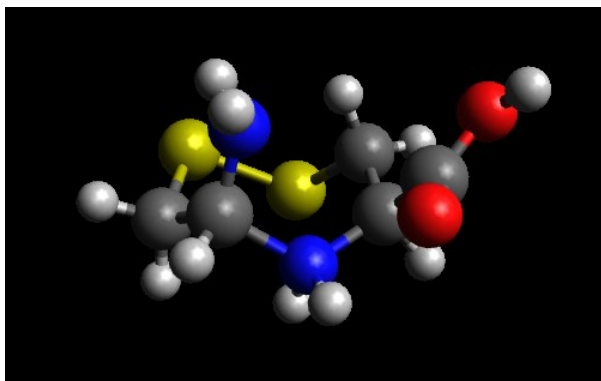
H5  
22

C	-2.63426	1.65613	0.34756
C	-2.49653	0.27245	0.83571
N	-2.41484	2.00514	-0.86898
H	-2.93020	2.43693	1.04618
H	-2.13035	1.28620	-1.54136
H	-2.49430	2.96785	-1.18169
H	-3.38115	0.01682	1.42969
H	-1.62823	0.28806	1.51079
S	-2.18637	-0.97497	-0.48232
N	0.67615	1.04529	0.93666
C	1.58594	-0.03953	0.54897
H	0.92535	1.36273	1.86996
C	2.88039	0.52074	-0.06187
C	0.95919	-0.99578	-0.48401
H	1.85434	-0.62276	1.43239
O	3.86454	-0.38895	-0.07075
O	2.97552	1.63646	-0.50703
H	1.68931	-1.75281	-0.77975
H	0.64406	-0.46663	-1.38502
S	-0.46332	-1.97335	0.15662
H	4.65066	-0.00059	-0.48863
H	0.87747	1.84014	0.32904

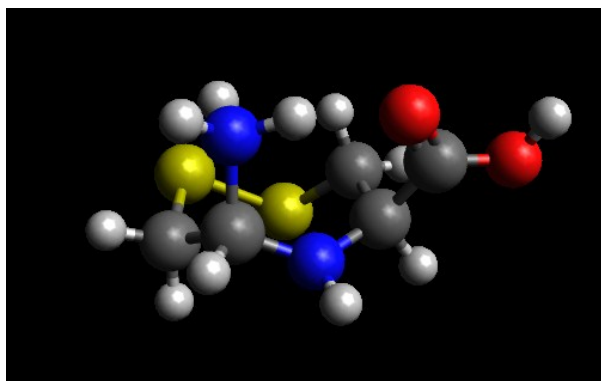


D1  
22

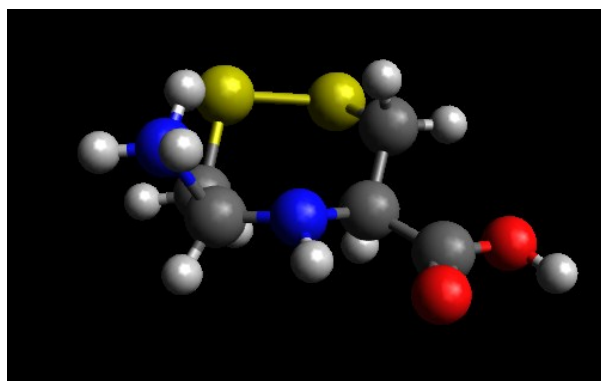
C	-0.27624	1.67738	0.22140
C	-1.78990	1.46434	0.33915
N	0.25790	1.58688	-1.07088
H	-0.01274	2.61721	0.71044
H	-0.38877	1.28617	-1.78885
H	0.86720	2.33777	-1.36067
H	-2.27960	2.34054	-0.09554
H	-2.10105	1.40136	1.38439
S	-2.45818	0.04214	-0.60079
N	0.45284	0.61500	1.20240
C	1.08439	-0.62441	0.61811
H	-0.21446	0.32770	1.92201
C	2.41352	-0.17318	0.00318
C	0.16301	-1.47641	-0.26514
H	1.36265	-1.21928	1.49596
O	2.88166	-1.05709	-0.86959
O	2.96694	0.83666	0.35944
H	0.54987	-2.49669	-0.27490
H	0.13112	-1.12175	-1.29166
S	-1.55641	-1.58429	0.38150
H	3.75921	-0.77582	-1.17965
H	1.22725	1.12119	1.64739



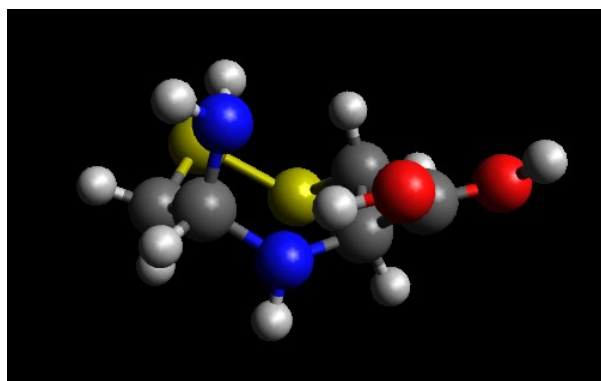
D2			
22			
C	-0.47084	1.56648	0.67676
C	-1.95349	1.16027	0.61751
N	-0.03066	2.02901	-0.74441
H	-0.40697	2.46262	1.29626
H	-0.53962	1.46233	-1.43925
H	-0.23849	3.01433	-0.91677
H	-2.57030	2.03011	0.36662
H	-2.24305	0.80836	1.60695
S	-2.37693	-0.10234	-0.63438
N	0.42808	0.61974	1.25337
C	1.11206	-0.52107	0.64680
H	0.99819	1.03387	1.97633
C	2.38536	-0.07982	-0.09313
C	0.31598	-1.40487	-0.34668
H	1.41924	-1.15774	1.47904
O	3.36088	-0.97075	-0.00961
O	2.47888	0.96538	-0.71488
H	0.83347	-2.36331	-0.42747
H	0.28756	-0.97369	-1.34942
S	-1.40456	-1.79239	0.13473
H	4.13168	-0.67020	-0.52146
H	0.99776	1.84479	-0.85061



D3			
22			
C	-1.73754	0.65307	1.09121
S	-2.37519	-0.61011	-0.08724
S	-0.87943	-2.08087	-0.02870
C	0.58791	-1.20542	-0.68064
C	1.08583	-0.06451	0.23062
C	2.59916	0.17762	0.07266
O	3.08467	1.26934	-0.07889
C	-0.79697	1.67580	0.44761
N	-1.56545	2.23490	-0.82414
N	0.46074	1.23732	-0.02219
O	3.29091	-0.95964	0.16619
H	-0.71821	2.55777	1.09159
H	-1.88593	1.40592	-1.35250
H	-2.37563	2.81761	-0.59305
H	-2.61634	1.17053	1.48619
H	-1.24504	0.16226	1.93094
H	1.18033	1.95637	-0.00547
H	0.96462	-0.38565	1.27371
H	1.33975	-1.99665	-0.72127
H	0.40766	-0.84457	-1.69428
H	4.23968	-0.76104	0.10244
H	-0.91893	2.77059	-1.40623



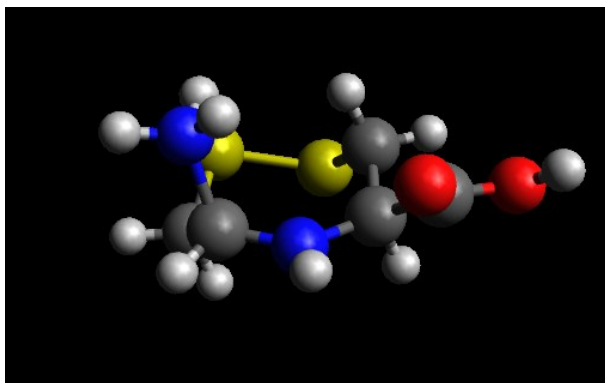
P1			
22			
C	-0.44166	1.67672	0.39873
C	-1.92404	1.25974	0.51188
N	0.05142	1.90680	-0.95125
H	-0.36447	2.61931	0.94979
H	-0.47442	1.37099	-1.63795
H	-0.01332	2.88368	-1.21474
H	-2.54497	2.11102	0.21452
H	-2.17408	1.00852	1.54439
S	-2.46757	-0.09973	-0.58166
N	0.53216	0.79861	1.10756
C	1.05077	-0.47501	0.62294



H	0.32370	0.74731	2.09664
C	2.40561	-0.20766	-0.00253
C	0.23469	-1.39749	-0.33845
H	1.27301	-1.08370	1.50676
O	3.13893	-1.20253	-0.35716
O	2.82668	0.97418	-0.17593
H	0.74231	-2.36273	-0.40072
H	0.17334	-0.98287	-1.34418
S	-1.45619	-1.72567	0.26395
H	3.99041	-0.92900	-0.74795
H	2.08662	1.57481	0.13192

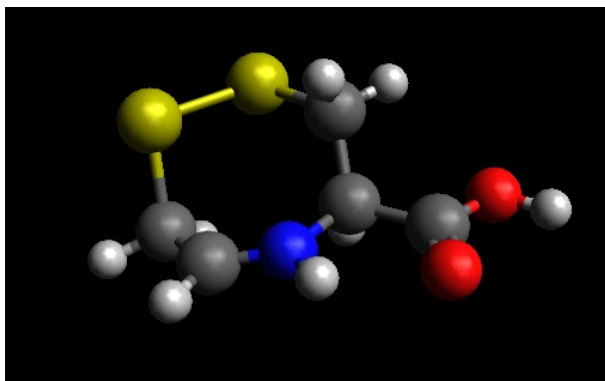
P2  
22

C	-1.97716	0.88143	0.86412
S	-2.47761	-0.39116	-0.35312
S	-1.12815	-1.92720	0.08355
C	0.44533	-1.18974	-0.49194
C	1.14462	-0.26471	0.51976
C	2.57185	0.01393	0.00540
O	2.96329	1.10306	-0.33166
C	-0.67420	1.63099	0.56190
N	-0.80205	2.12221	-1.02165
N	0.55288	1.04649	0.82215
O	3.30259	-1.10267	-0.01667
H	-0.69416	2.59354	1.07424
H	0.12747	2.36247	-1.37191
H	-1.19056	1.33538	-1.56137
H	-2.80430	1.59716	0.88606
H	-1.89401	0.43295	1.85450
H	1.28164	1.72558	1.00008
H	1.24879	-0.83025	1.45218
H	1.10226	-2.04859	-0.64477
H	0.29517	-0.72077	-1.46753
H	4.19497	-0.89747	-0.34102
H	-1.42048	2.92835	-1.13967



I  
18

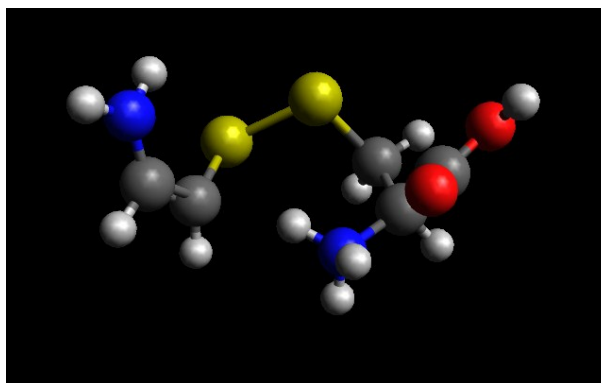
C	-1.82563	1.30649	0.76378
S	-2.52973	0.04384	-0.40425
S	-1.36349	-1.61257	0.14288
C	0.29539	-1.14188	-0.48125
C	0.97606	0.00300	0.29513
C	2.49111	0.04938	0.02211
O	3.01803	0.98435	-0.52446
C	-0.65695	1.89978	0.07598
N	0.49223	1.34401	-0.10581
O	3.08900	-1.05060	0.45645
H	-0.76027	2.88681	-0.37034
H	-2.58884	2.06404	0.93782
H	-1.57177	0.81130	1.70231
H	1.22019	1.86173	-0.61459
H	0.82184	-0.12870	1.36975
H	0.89115	-2.04542	-0.33540
H	0.25437	-0.92292	-1.54965
H	4.04315	-1.00600	0.27232



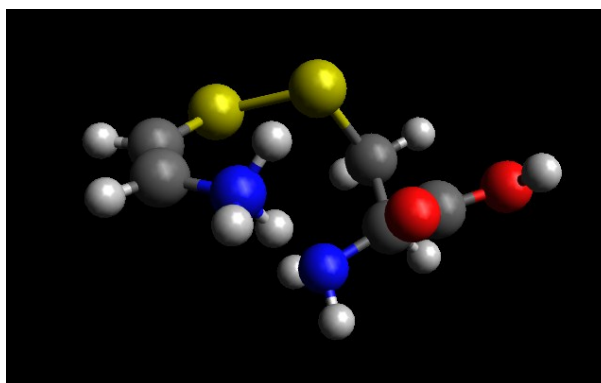
J1  
22

C	-2.80037	1.37592	0.08133
C	-2.20612	0.40453	0.84718
N	-3.06172	1.31791	-1.22976

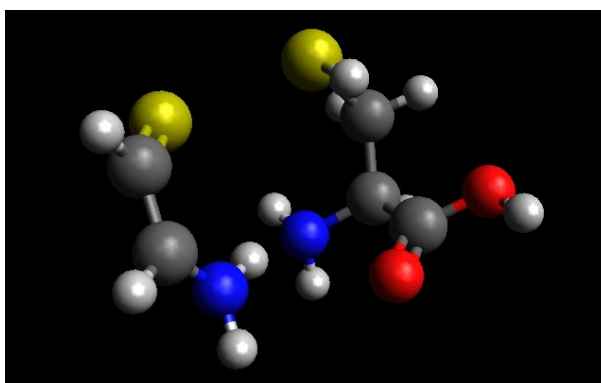
H	-3.07682	2.31175	0.55995
H	-2.93578	0.45455	-1.73974
H	-2.20450	0.53722	1.92358
H	-0.15653	0.80611	1.00064
S	-1.95894	-1.24451	0.25858
H	-3.55609	2.06422	-1.69071
N	0.80693	0.96074	1.39045
C	1.81007	-0.06222	0.90830
H	0.72991	0.97812	2.40829
C	2.56597	0.63606	-0.23279
C	1.16112	-1.39772	0.53840
H	2.53030	-0.21585	1.71860
O	3.36753	-0.19881	-0.87551
O	2.44062	1.81611	-0.44750
H	0.69994	-1.86306	1.41105
H	1.94504	-2.06435	0.17641
S	-0.09291	-1.24287	-0.79889
H	3.85780	0.27898	-1.56615
H	1.13071	1.88198	1.04787



J2			
22			
C	-2.20236	1.76084	-0.16166
C	-2.78277	0.58797	0.08625
N	-0.77051	1.92349	-0.42676
H	-2.77035	2.67997	-0.15437
H	-0.45459	1.41942	-1.26162
H	-3.84926	0.61448	0.29817
H	-0.17656	1.51367	0.38561
S	-2.26466	-1.09652	0.12422
H	-0.51928	2.90470	-0.54890
N	0.65918	0.69432	1.60098
C	1.57287	-0.29657	1.00387
H	0.04718	0.24012	2.27574
C	2.35076	0.37138	-0.13200
C	0.81453	-1.53619	0.49847
H	2.31180	-0.66316	1.72717
O	3.39748	-0.36998	-0.49785
O	2.04206	1.42227	-0.64219
H	0.29745	-2.02873	1.32365
H	1.52999	-2.25000	0.08644
S	-0.40570	-1.27572	-0.86712
H	3.86297	0.06517	-1.23122
H	1.19117	1.39269	2.11680



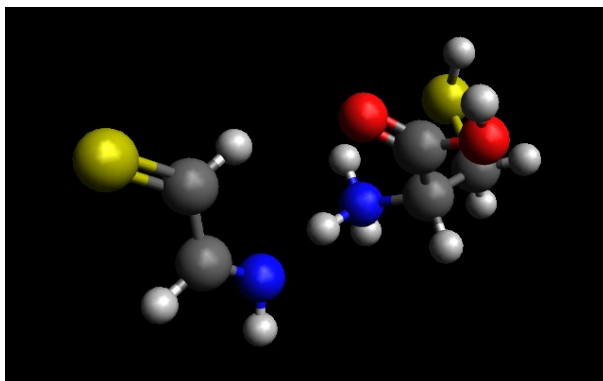
J3			
22			
C	-2.44895	1.61485	-0.44053
C	-2.86207	0.25090	-0.62346
N	-1.41850	1.98366	0.25294
H	-3.01425	2.39699	-0.94284
H	0.43274	-1.10087	-1.62540
H	-3.55445	0.07709	-1.44300
H	-0.75835	1.31700	0.72353
S	-2.33114	-0.99691	0.30145
H	-1.16382	2.96349	0.29363
N	0.62086	0.46666	1.68492
C	1.76570	-0.04149	0.91774
H	0.25289	-0.25691	2.29629
C	2.04601	0.90632	-0.25219
C	1.60480	-1.50335	0.47052
H	2.68958	-0.04353	1.51462
O	3.09974	0.48885	-0.96875



O	1.41736	1.90651	-0.49139
H	1.48561	-2.14457	1.34602
H	2.50990	-1.82046	-0.04706
S	0.18861	-1.96728	-0.61733
H	3.28677	1.13554	-1.66848
H	0.92752	1.22480	2.29024

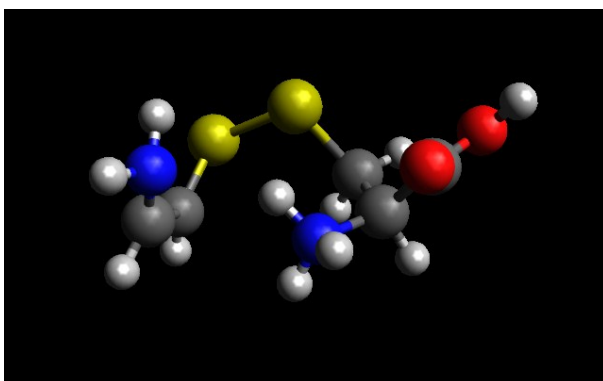
J4  
22

C	2.89646	-1.12875	-0.56402
C	2.99139	0.04072	0.31686
N	1.76805	-1.66740	-0.85591
H	3.84132	-1.51462	-0.95208
H	-3.26525	1.10808	1.43690
H	2.04832	0.45724	0.66892
H	0.20375	-1.36699	-0.32398
S	4.41969	0.68614	0.73690
H	1.88943	-2.47066	-1.47476
N	-0.83749	-1.32197	-0.00551
C	-1.66852	-0.38178	-0.82334
H	-0.87857	-1.02565	0.97759
C	-1.05956	1.00940	-0.65291
C	-3.15224	-0.43921	-0.41004
H	-1.57416	-0.67857	-1.87145
O	-1.66259	1.89023	-1.44871
O	-0.16582	1.24874	0.11712
H	-3.56326	-1.42011	-0.65839
H	-3.71063	0.30066	-0.98121
S	-3.44677	-0.22859	1.39042
H	-1.26706	2.76939	-1.32420
H	-1.22239	-2.26780	-0.05102



K2  
22

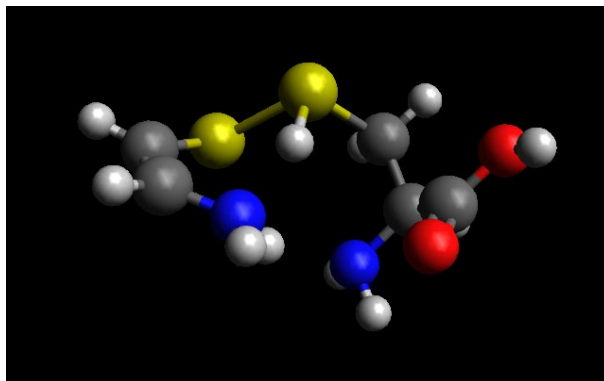
C	-2.53540	1.48049	0.22441
C	-2.62881	0.24696	0.76120
N	-1.95023	1.79552	-0.98946
H	-2.85389	2.33414	0.81591
H	-1.96950	1.06464	-1.69324
H	-3.04731	0.12677	1.75266
H	0.15602	1.57016	1.57841
S	-2.27795	-1.28739	-0.05909
H	-2.20226	2.69742	-1.37248
N	0.71285	1.35409	0.74987
C	1.56607	0.12488	0.93200
H	1.32287	2.14446	0.49938
C	2.72046	0.29147	-0.06846
C	0.74487	-1.16461	0.80100
H	2.00622	0.17705	1.93312
O	3.42803	-0.82222	-0.19115
O	2.93680	1.34271	-0.61566
H	0.07303	-1.28223	1.65192
H	1.43218	-2.00998	0.78672
S	-0.25989	-1.17842	-0.74614
H	4.17655	-0.67420	-0.79421
H	0.05144	1.21835	-0.04375



K3  
22

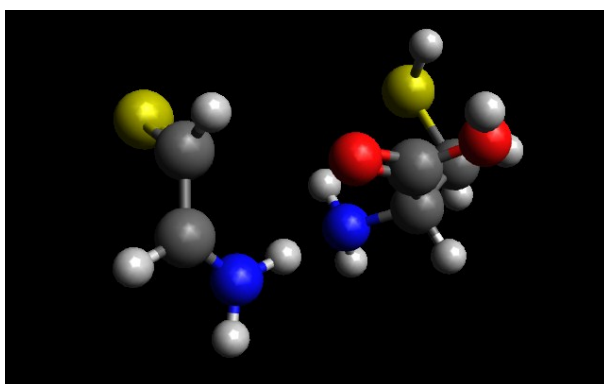
C	-2.29025	1.66655	-0.37092
C	-2.97259	0.51170	-0.19397
N	-0.93586	1.78533	-0.10364
H	-2.76666	2.50289	-0.87085

H	-0.34901	0.40744	-0.81295
H	-3.99773	0.41564	-0.52534
H	-0.56299	1.37961	0.77060
S	-2.22530	-0.94106	0.42859
H	-0.51649	2.68492	-0.30912
N	0.85196	0.31692	1.76166
C	1.68645	-0.49417	0.87750
H	0.50082	-0.23875	2.53654
C	2.40902	0.42735	-0.11221
C	0.88594	-1.59445	0.16660
H	2.48332	-1.03714	1.40977
O	3.18839	-0.27805	-0.94463
O	2.29301	1.62431	-0.12739
H	0.41695	-2.26470	0.88919
H	1.53630	-2.18476	-0.47912
S	-0.48678	-1.03766	-0.95790
H	3.66927	0.33212	-1.52774
H	1.40411	1.07462	2.15596



K4  
22

C	2.91138	-0.97747	0.31568
C	2.67096	0.04099	-0.72874
N	2.06480	-1.28372	1.22491
H	3.88823	-1.46317	0.32829
H	-2.43971	1.46576	-1.36104
H	2.32465	-0.31101	-1.70008
H	1.06240	-0.86540	1.27761
S	3.03472	1.57627	-0.38163
H	2.34089	-1.94579	1.94544
N	-0.46288	-0.16513	1.49062
C	-1.59942	-0.73913	0.74623
H	-0.34465	0.80230	1.17749
C	-1.11161	-1.20011	-0.62633
C	-2.82140	0.20104	0.65308
H	-1.92296	-1.64882	1.26614
O	-2.11885	-1.65961	-1.37486
O	0.04100	-1.17800	-0.99160
H	-3.18601	0.40809	1.66074
H	-3.62993	-0.27060	0.09800
S	-2.44137	1.84890	-0.06727
H	-1.76919	-1.97345	-2.22442
H	-0.70735	-0.10979	2.47766



L  
15

H	-1.29976	-1.20662	-1.28108
H	-0.78158	1.62822	-0.51709
N	0.03254	1.77837	0.11467
C	0.31667	0.45752	0.78597
H	-0.17619	2.53331	0.77068
C	1.40244	-0.20064	-0.08013
C	-0.97678	-0.36126	0.95834
H	0.75896	0.66184	1.76501
O	1.62974	-1.45107	0.28975
O	1.96383	0.40471	-0.95760
H	-1.58933	0.07456	1.74945
H	-0.71941	-1.37437	1.26100
S	-2.05169	-0.37257	-0.53031
H	2.35587	-1.82961	-0.23584
H	0.84818	2.02235	-0.47209

