

Supporting Information

4-Substituent Pyridines Directed Cobalt(II) Azides: Solvothermal Synthesis, Structure, and Magnetic Properties

Jiong-Peng Zhao,^{†,‡,§} Cui Zhao,[†] Wei-Chao Song,[‡] Lei Wang,[§] Yabo Xie,[†] Jian-Rong
Li,^{†,*} and Xian-He Bu[‡]

[†] *Beijing Key Laboratory for Green Catalysis and Separation, College of Environmental and
Energy Engineering, Beijing University of Technology, Beijing 100124, P. R. China*

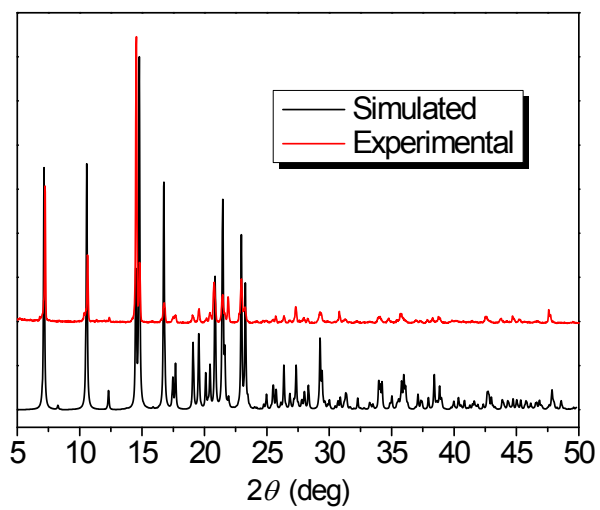
[‡] *Department of Chemistry, Nankai University, Tianjin 300071, P. R. China*

[§] *School of Chemistry and Chemical Engineering, Tianjin University of Technology, Tianjin
300384, China*

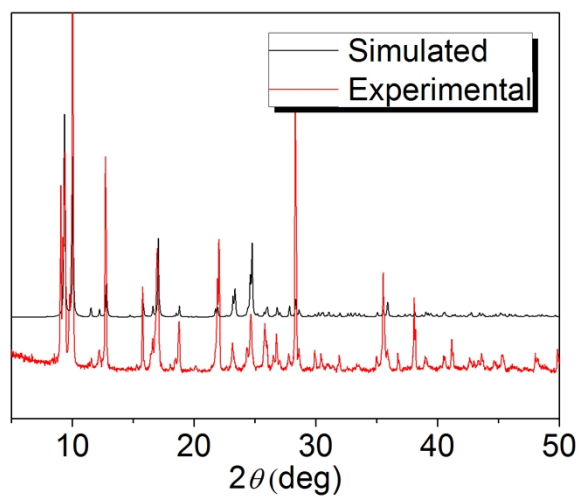
* Corresponding author. E-mail: jrli@bjut.edu.cn.

To *Dalton Trans.* (Article)

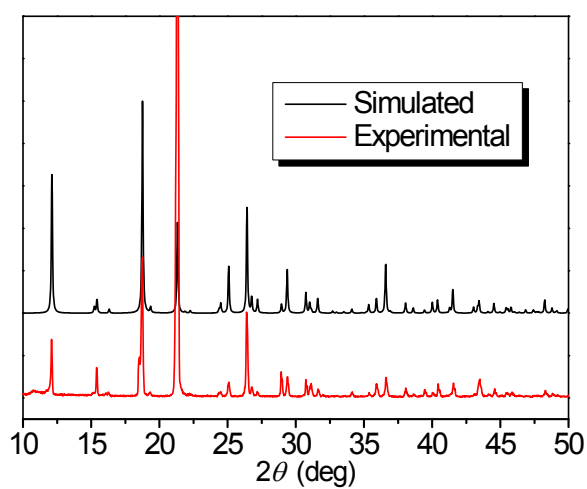
Additional Figures



(a)

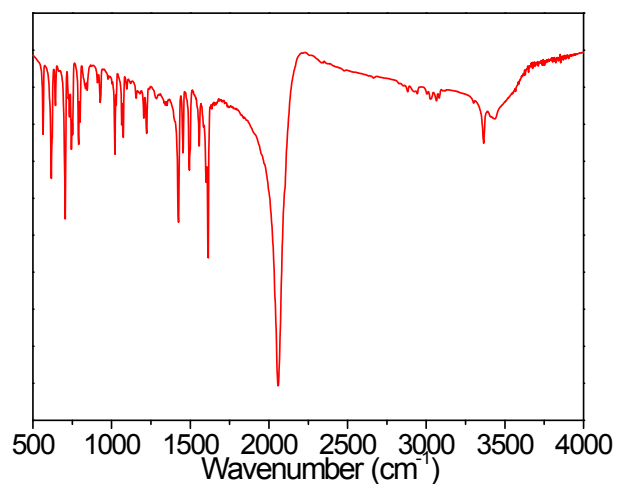


(b)

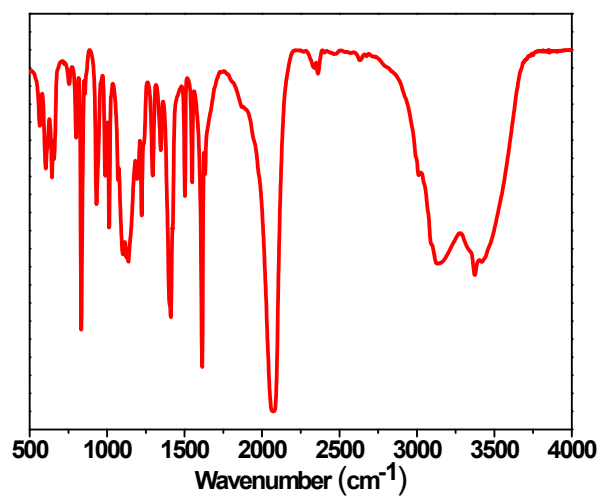


(c)

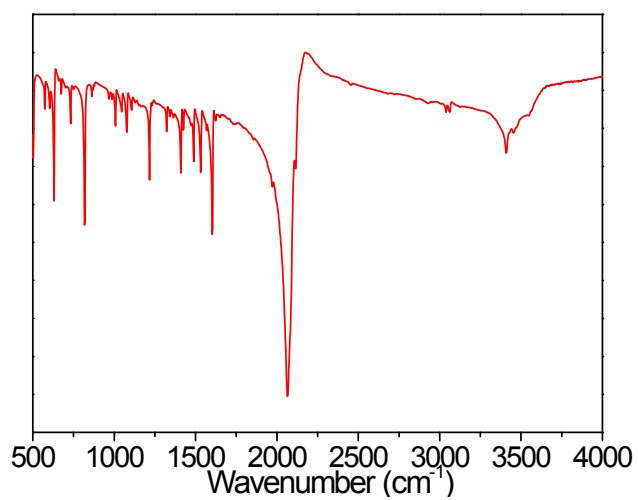
Fig. S1. XRPD patterns for **1** (a), **2** (b), and **3** (c).



(a)



(b)



(c)

Fig. S2. FT-IR spectra of **1** (a), **2** (b), and **3** (c).

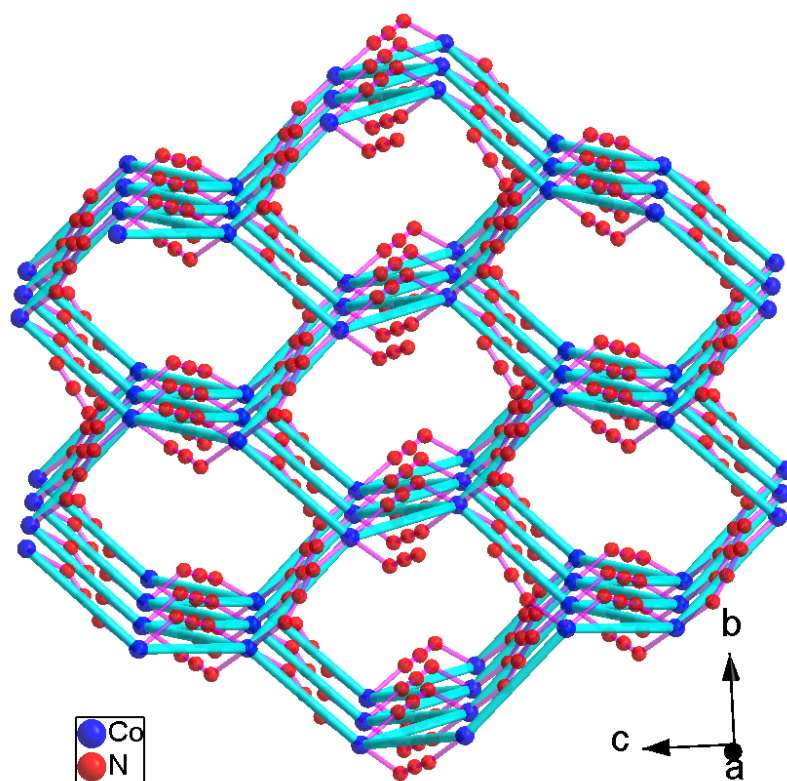


Fig. S3. 3D azide-bridged diamondoid framework in **3** viewed along the *a* direction showing the 4-connected topology and two kinds of single helices (generated by 2_1 axis) in this direction.

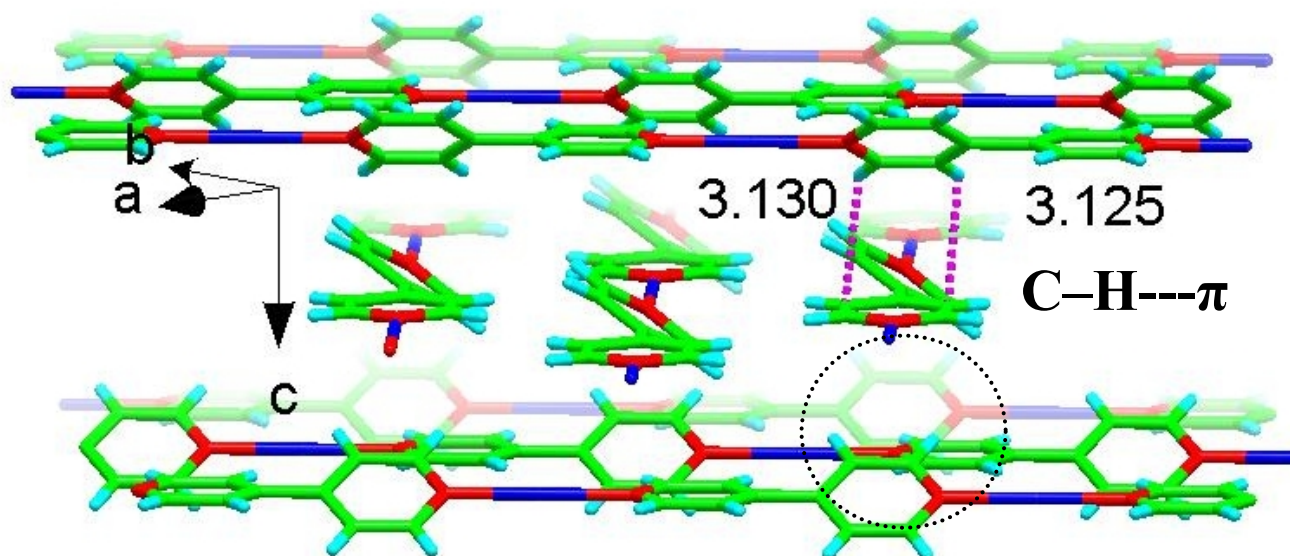


Fig. S4. Packing of Co(II)-bipy chains in **3** showing perpendicular array and C-H... π interactions.

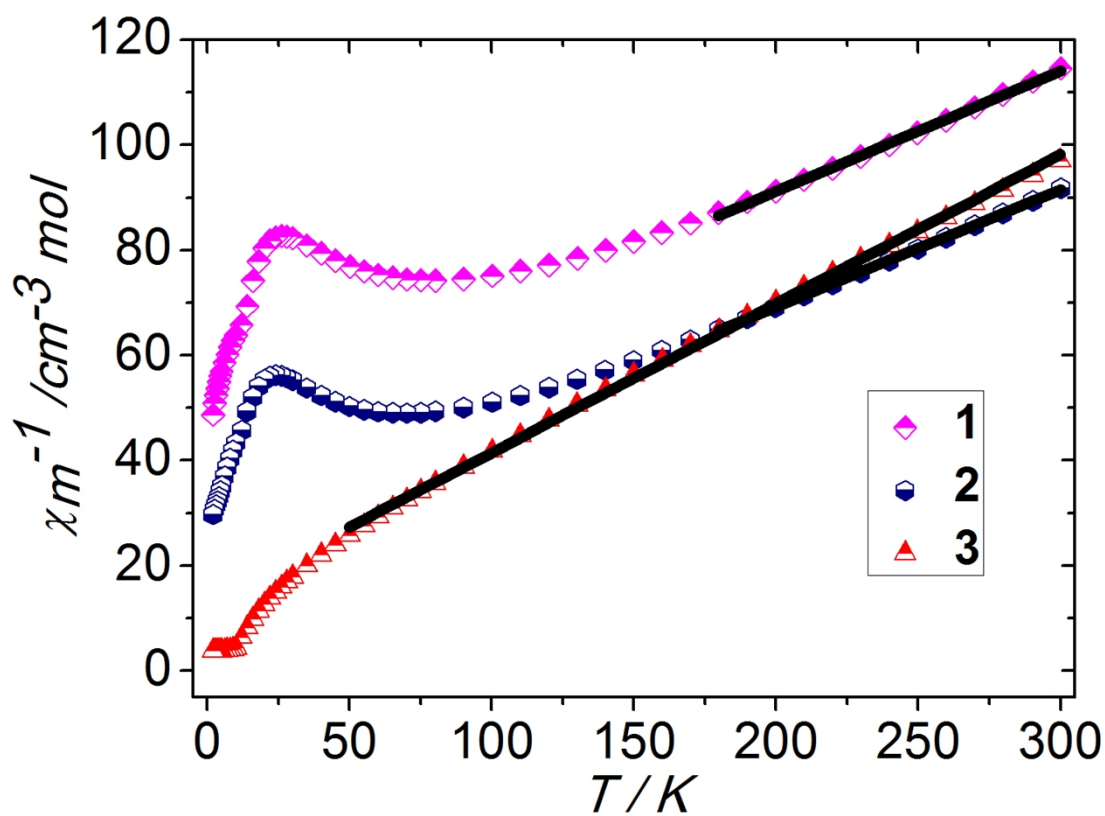


Fig. S5. Temperature dependence of $1/\chi_M$ for 1, 2, and 3.

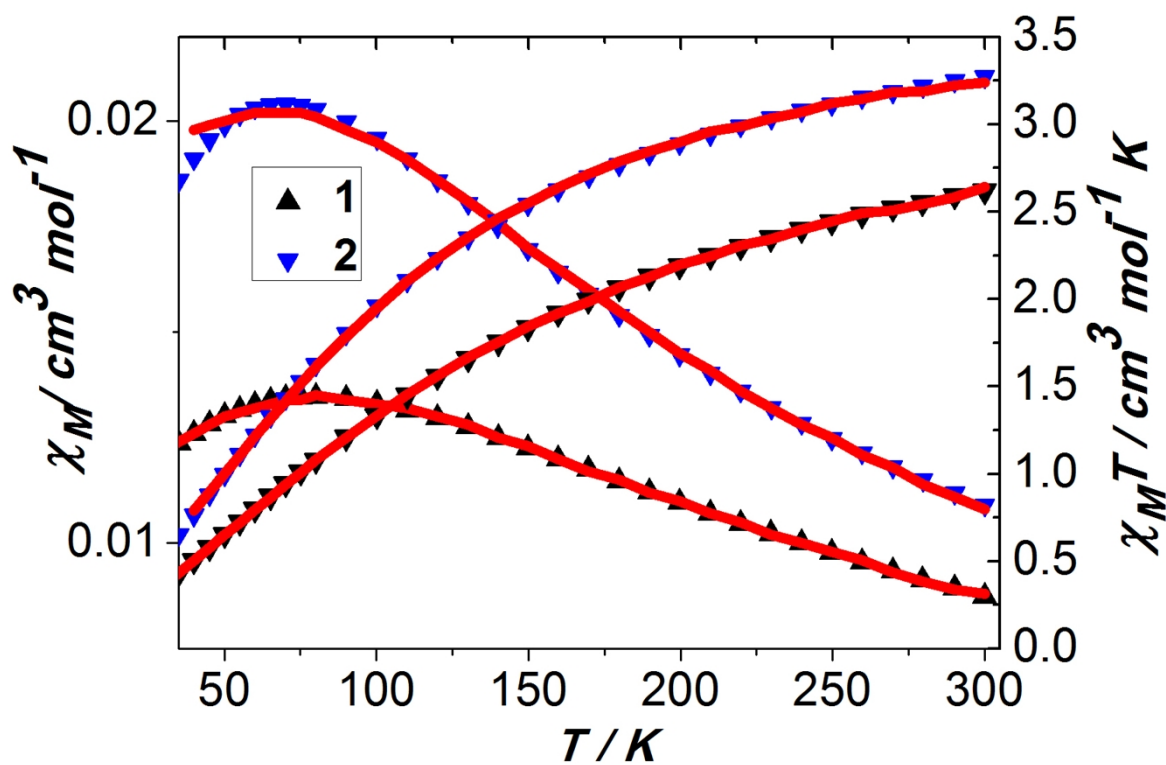


Fig. S6. The χ_M and $\chi_M T$ vs. T plot for 1 and 2 in 40~300 K. The red solid line is the best fitting of it.

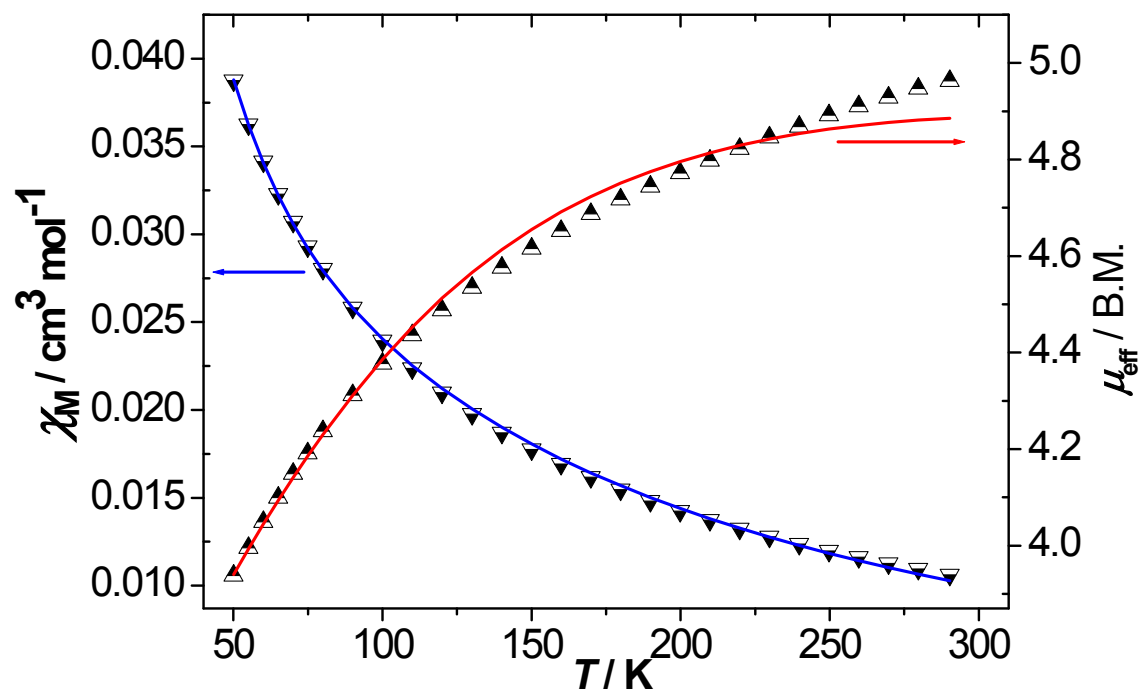


Fig. S7. Fitting of the susceptibility data of 3.