

**Effect of chalcogens on CO insertion into the palladium-methyl bond of
[(N[^]N[^]X)Pd(CH₃)]⁺ (X = O, S, Se) and on CO/ethylene copolymerisation**

Kamlesh Kumar and James Darkwa*

Department of Chemistry, University of Johannesburg, Auckland Park Kingsway Campus,

Auckland Park 2006, South Africa; email: jdarkwa@uj.ac.za

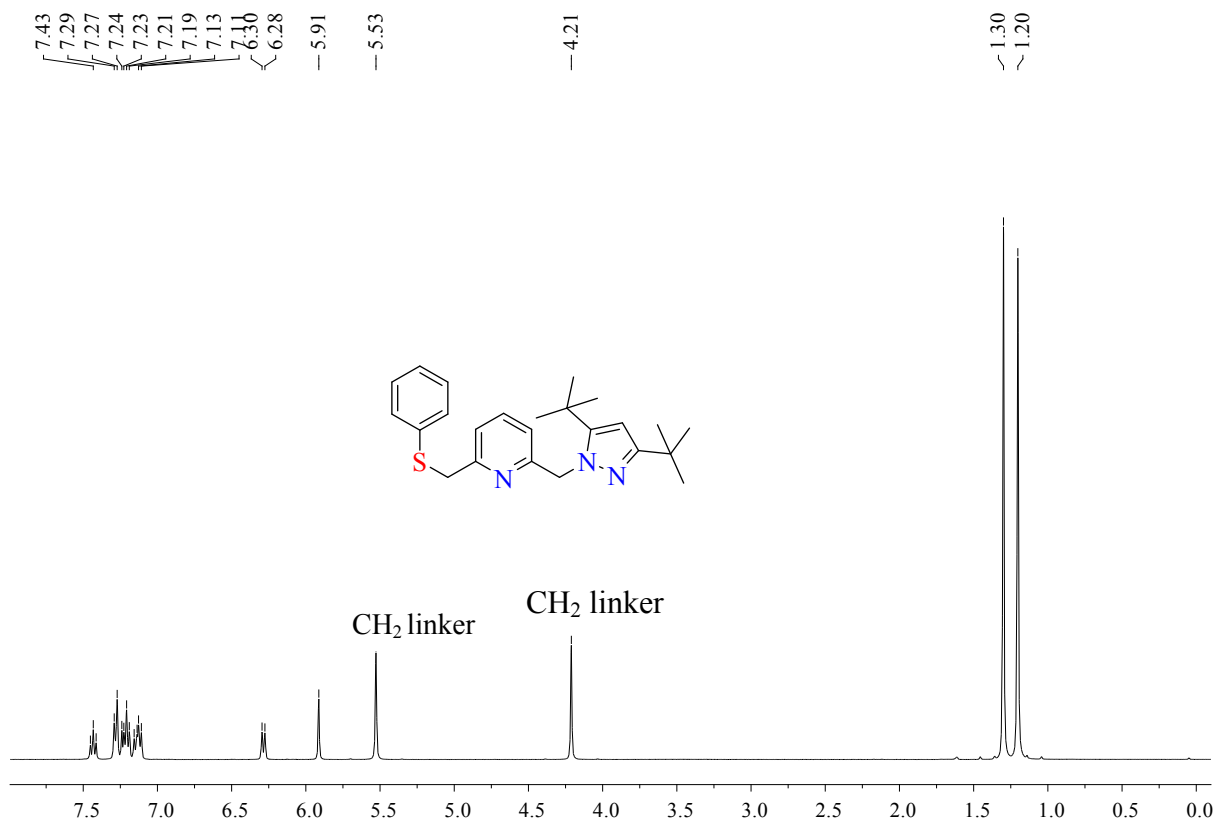


Figure S1: ¹H NMR spectrum of L1

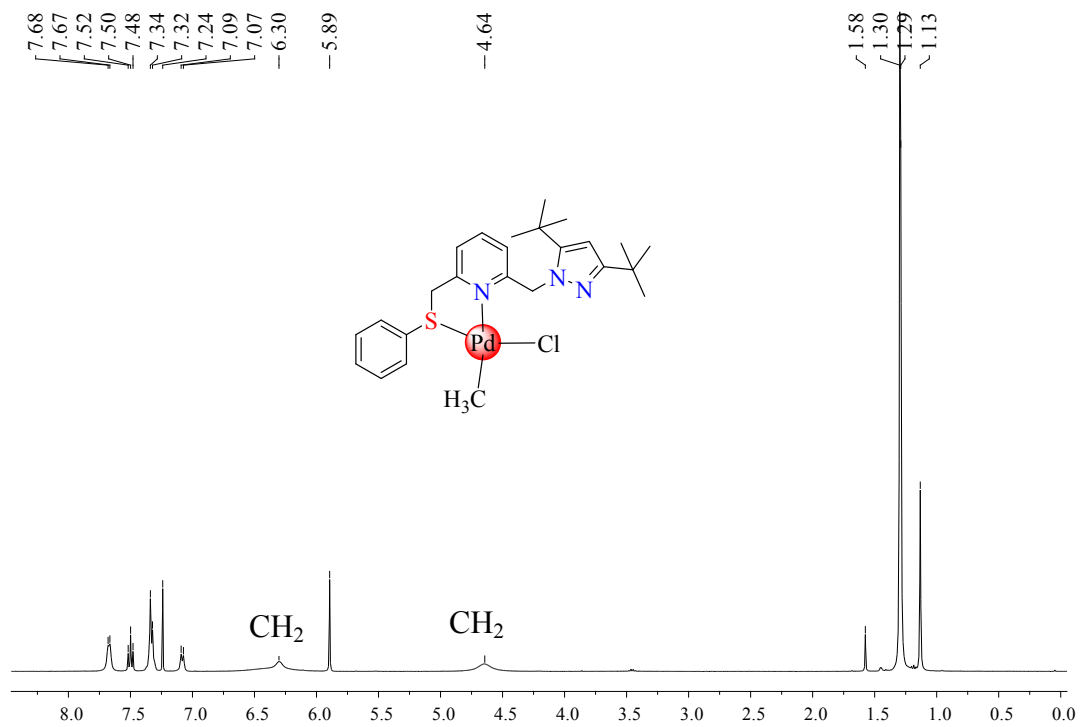


Figure S2: ¹H NMR spectrum of **1a**

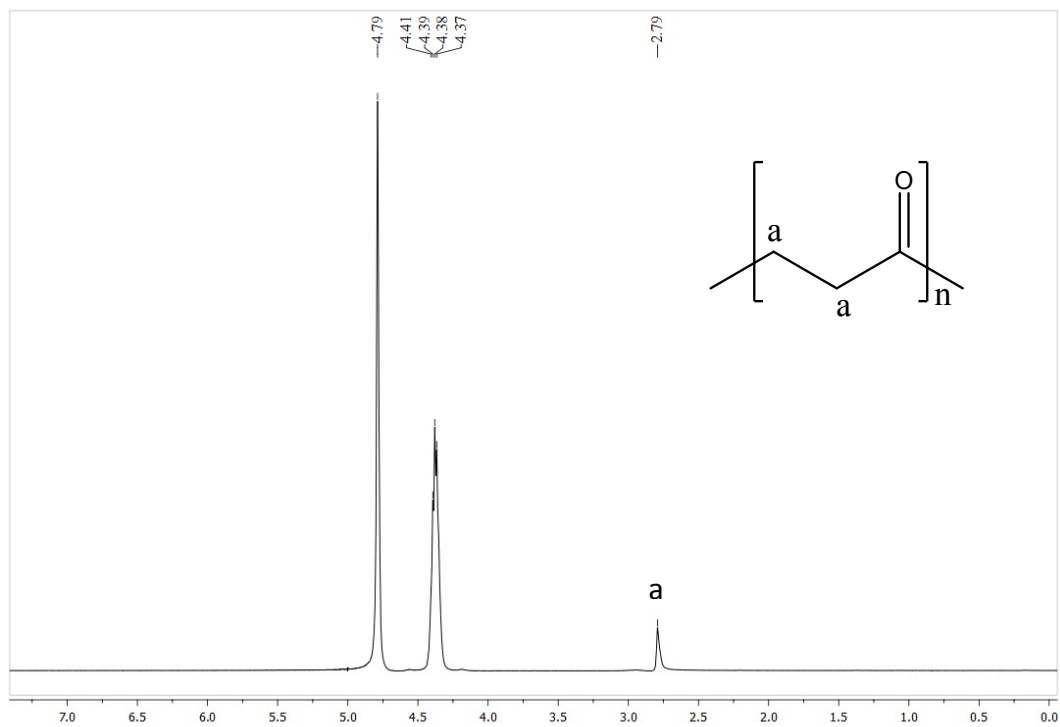


Figure S3: ¹H NMR spectrum of CO/ethylene copolymer in HFIP

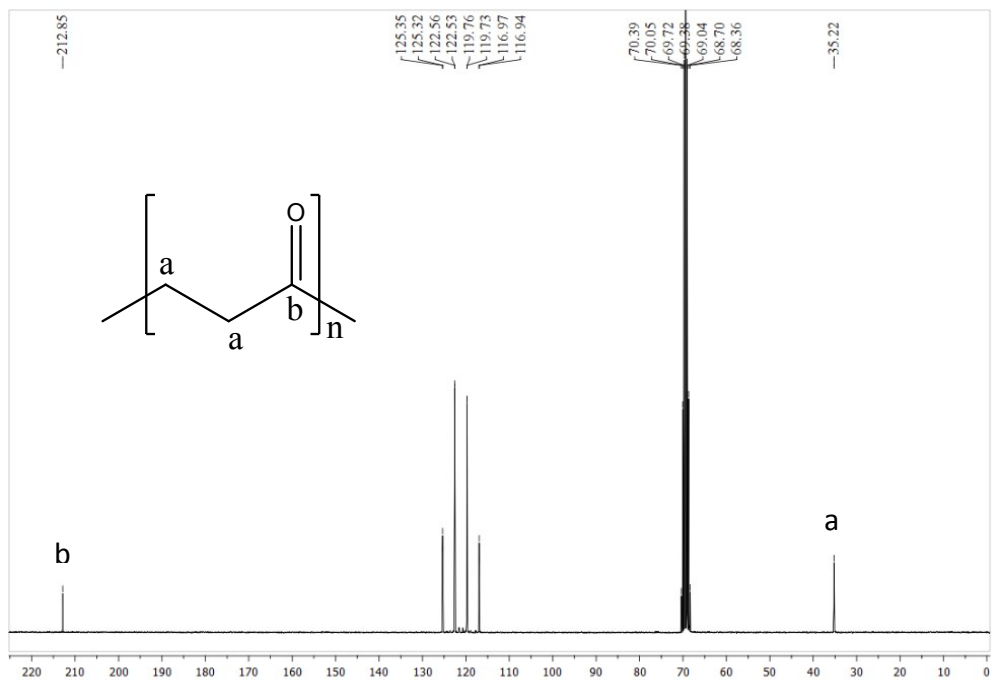


Figure S4: $^{13}\text{C}\{^1\text{H}\}$ NMR spectrum of CO/ethylene copolymer in HFIP

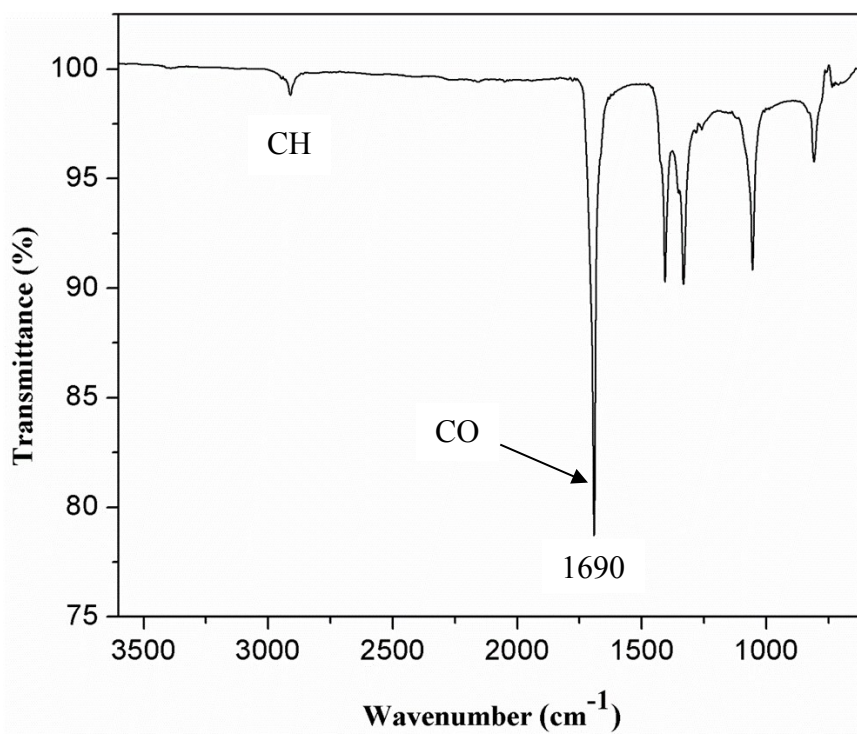


Figure S5: FT-IR spectrum of CO/ethylene copolymer

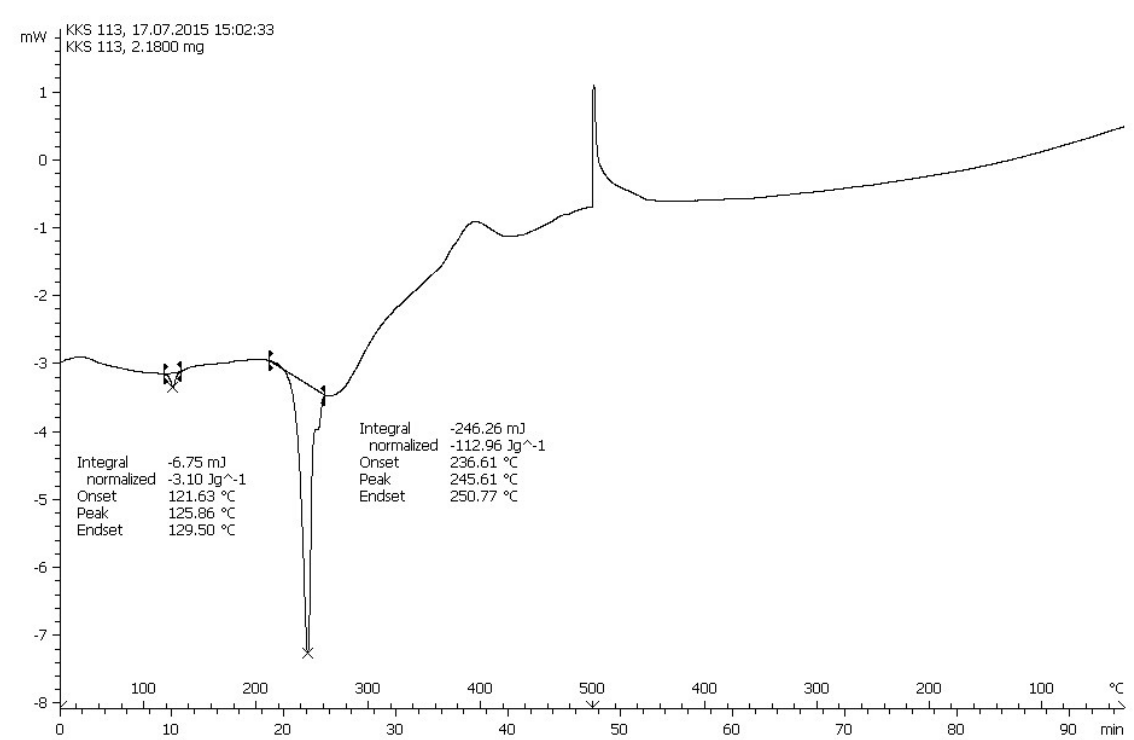


Figure S6: DSC thermogram of CO/ethylene copolymer

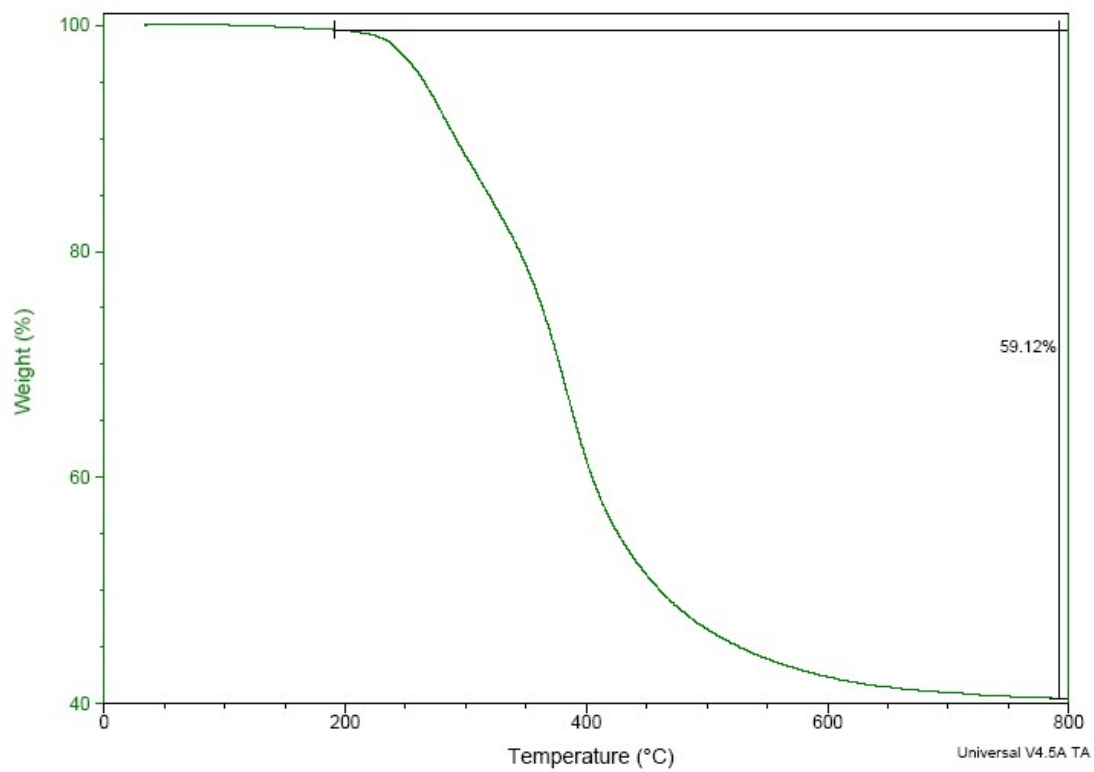


Figure S7: TGA thermogram of CO/ethylene copolymer

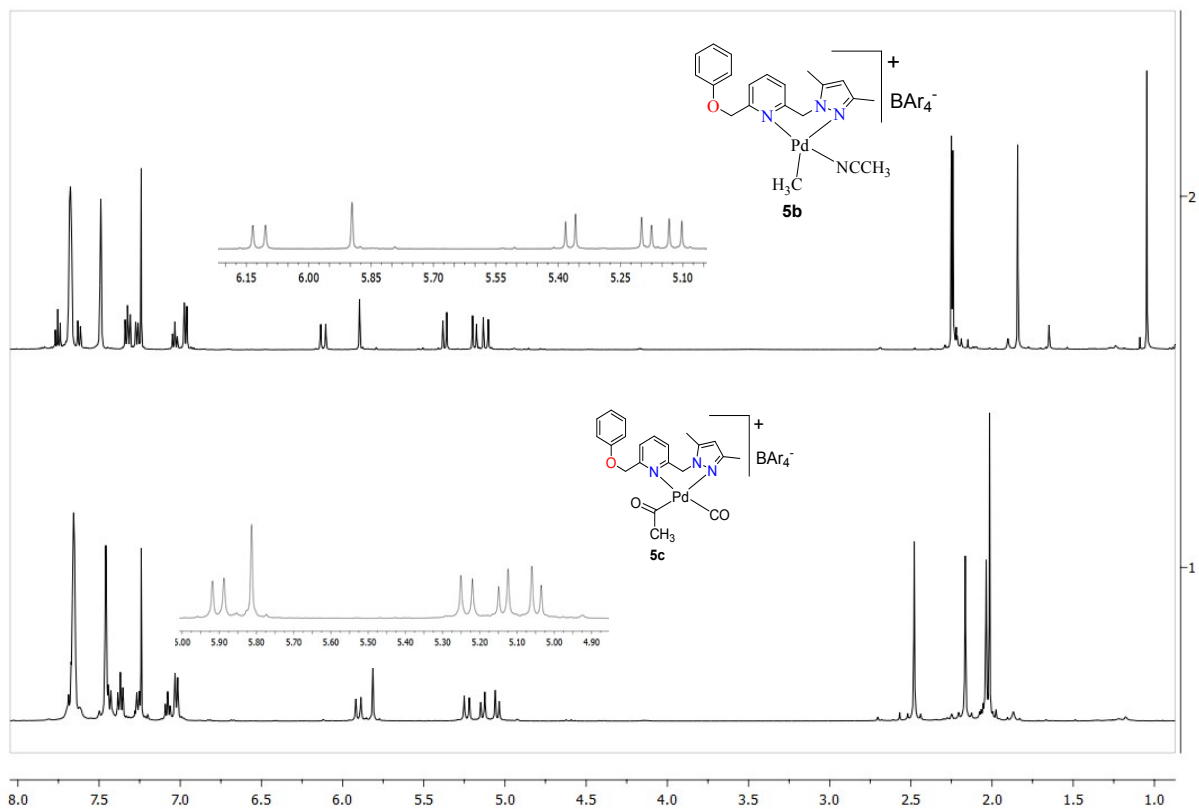


Figure S8: ¹H NMR spectra of complexes **5b** and **5c**

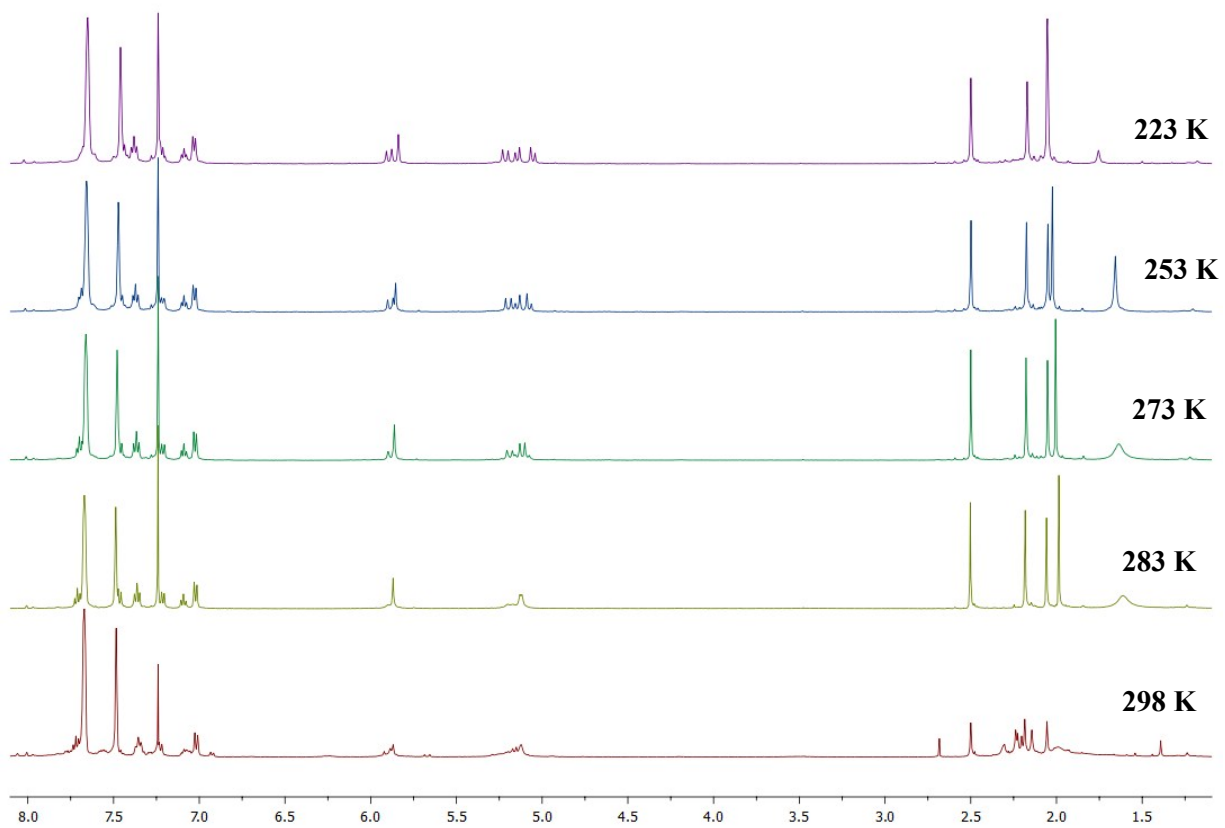


Figure S9: Variable temperature ^1H NMR of complex **5c**

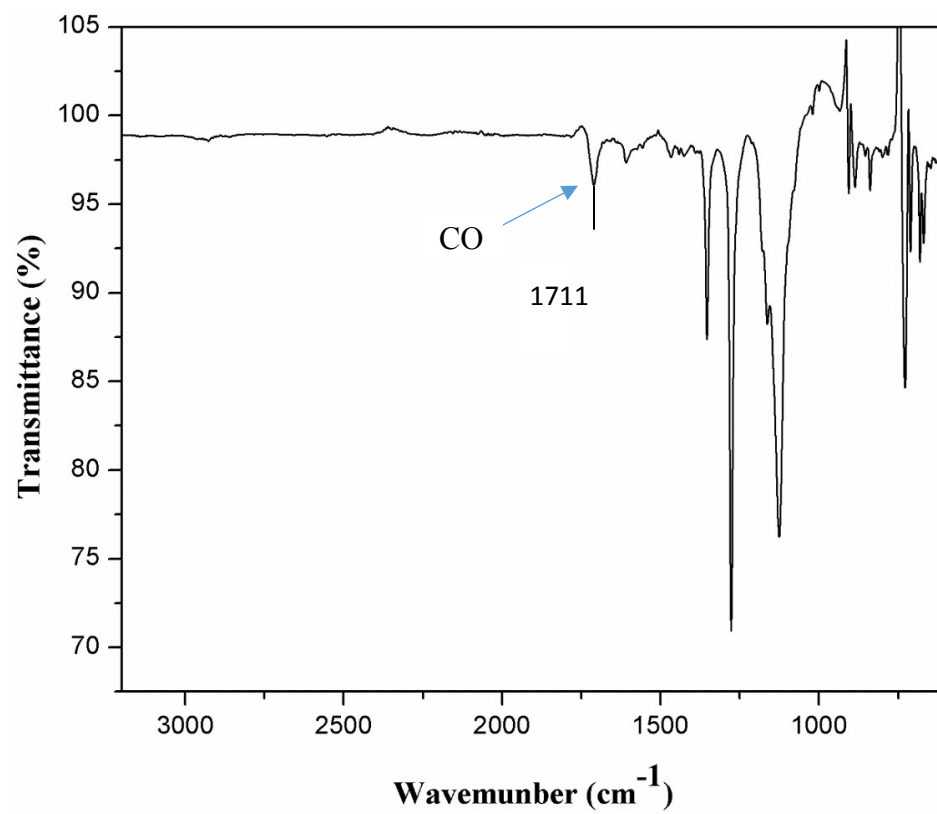


Figure S10: FT-IR spectrum of **1c**