

Supporting information

Multi-component assembly and luminescence tuning of lanthanide hybrids through the inside-outside double modification of zeolite A/L

Lei Chen, Bing Yan*

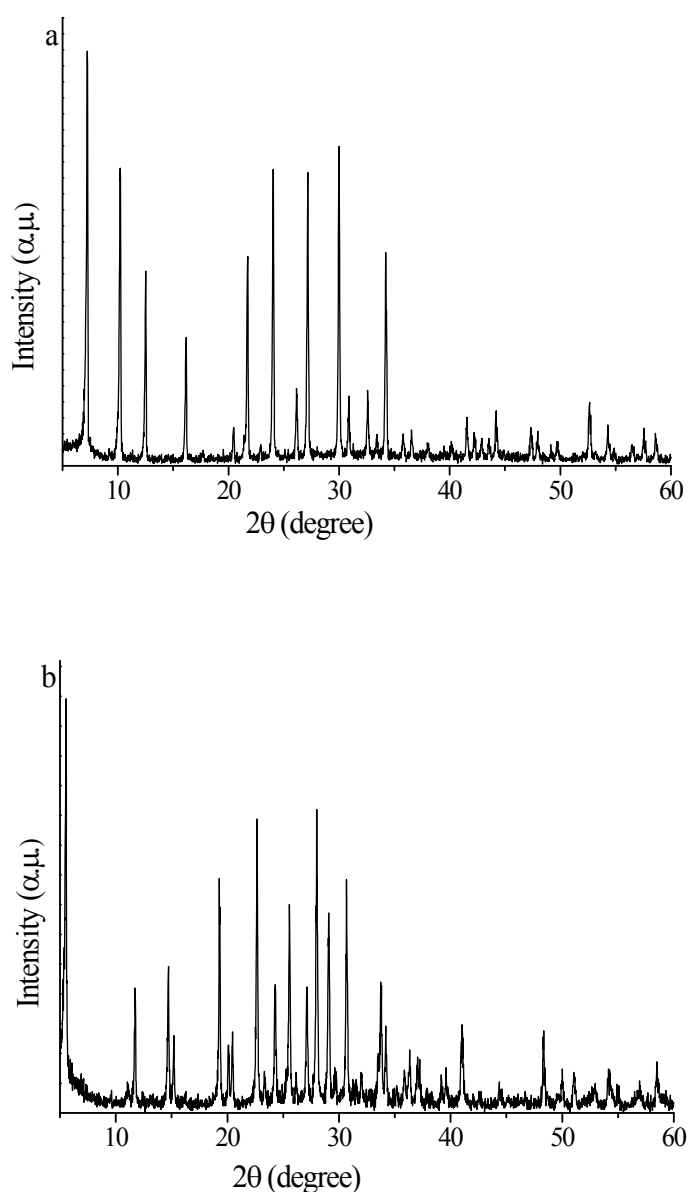


Figure S1 XRD patterns of zeolite A (a) and zeolite L (b) from 5-60 ° in a 2θ range

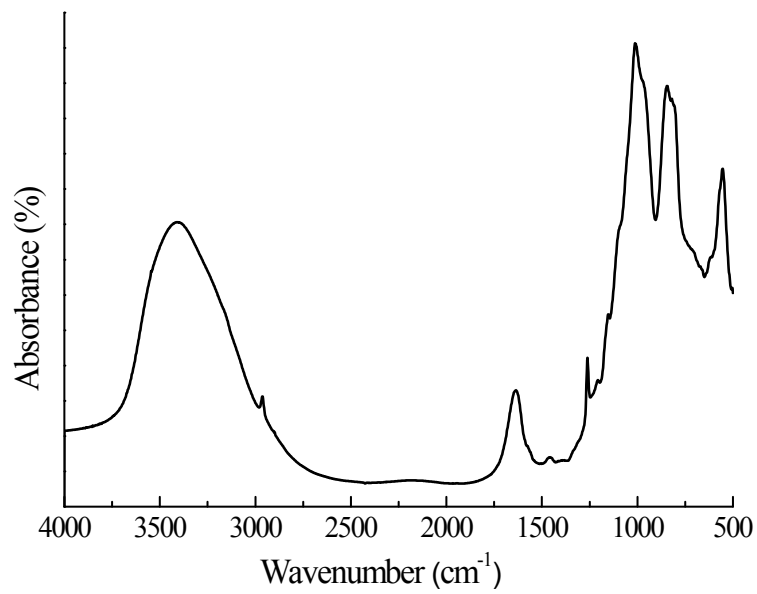


Figure S2 The selected FTIR spectrum of SmW10-IM-[ZA⊃Eu-TTA]

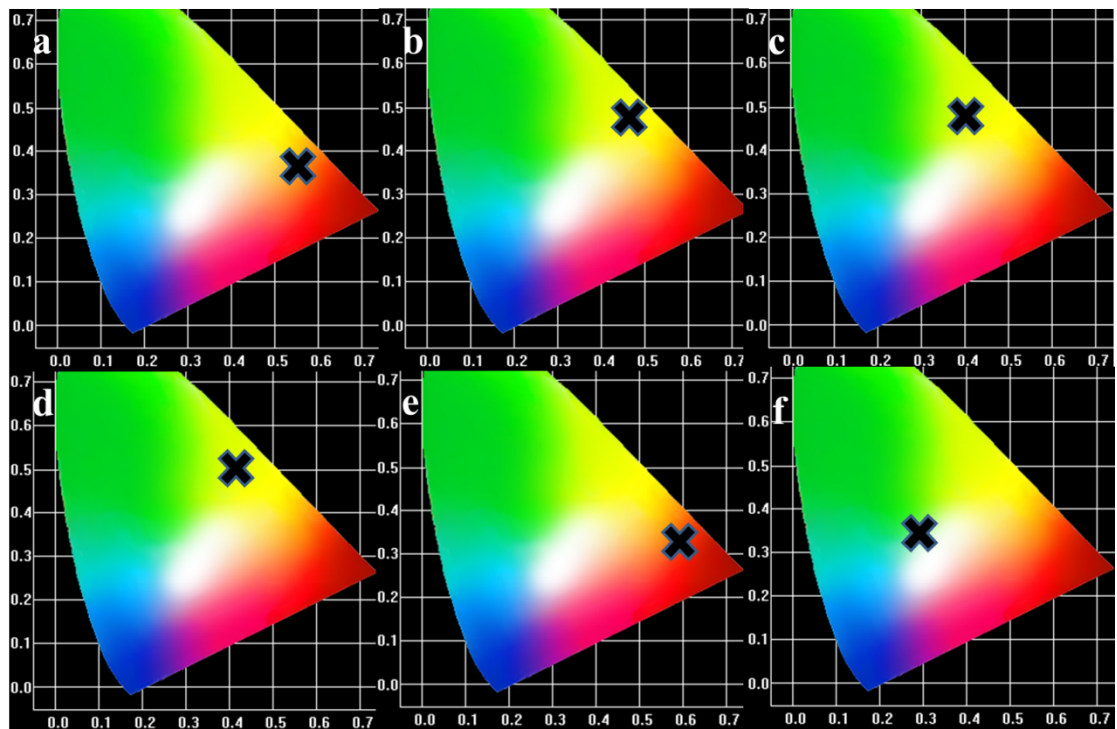


Figure S3 The selected CIE diagrams of EuW10-IM-[ZA⊃Tb-TAA] (a), EuW10-IM-[ZL⊃Tb-TAA] (b), TbW10-IM-[ZA⊃Eu-TTA] (c), TbW10-IM-[ZL⊃Eu-TTA] (d), SmW10-IM-[ZA⊃Eu-TTA] (e) and DyW10-IM-[ZA⊃Tb-TAA] (f)