

Electronic Supplementary Information

Effects of Ag-Embedment on electronic and ionic conductivities of LiMnPO₄ and performances as a cathode for lithium-ion batteries

Kug-Seung Lee,^a Kyung Jae Lee,^b Yun Sik Kang,^b Tae Joo Shin,^a Yung-Eun Sung^b and Docheon Ahn^{*a}

^a *Beamline Department, Pohang Accelerator Laboratory (PAL), Pohang 790-784, Republic of Korea*

^b *School of Chemical and Biological Engineering, Seoul National University, Seoul 151-742, Republic of Korea*

* Corresponding author. Tel.: +82-54-279-1527; fax: +82-54-279-1599. (D. Ahn)

E-mail address: adc4055@postech.ac.kr (D. Ahn).

Table S1. CHN analyses results of LMP and Ag-embedded LMP samples (EA-1110, Thermo Quest)

Sample Name	Carbon	Hydrogen	Nitrogen
LMP	3.236	0.208	0.414
Ag-embedded LMP	3.995	0.132	0.406

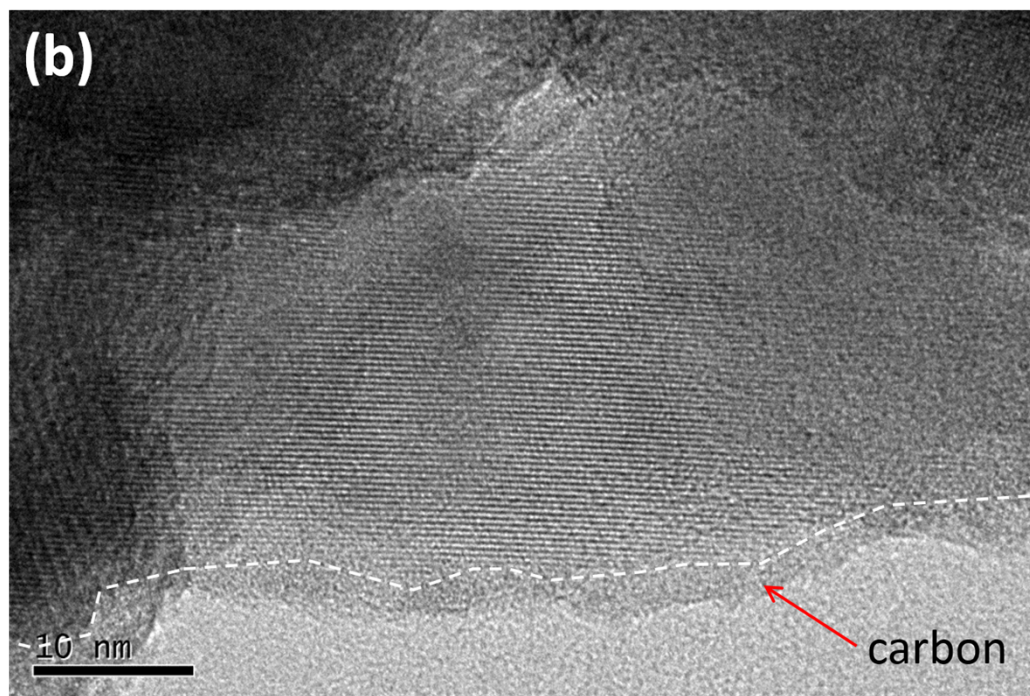
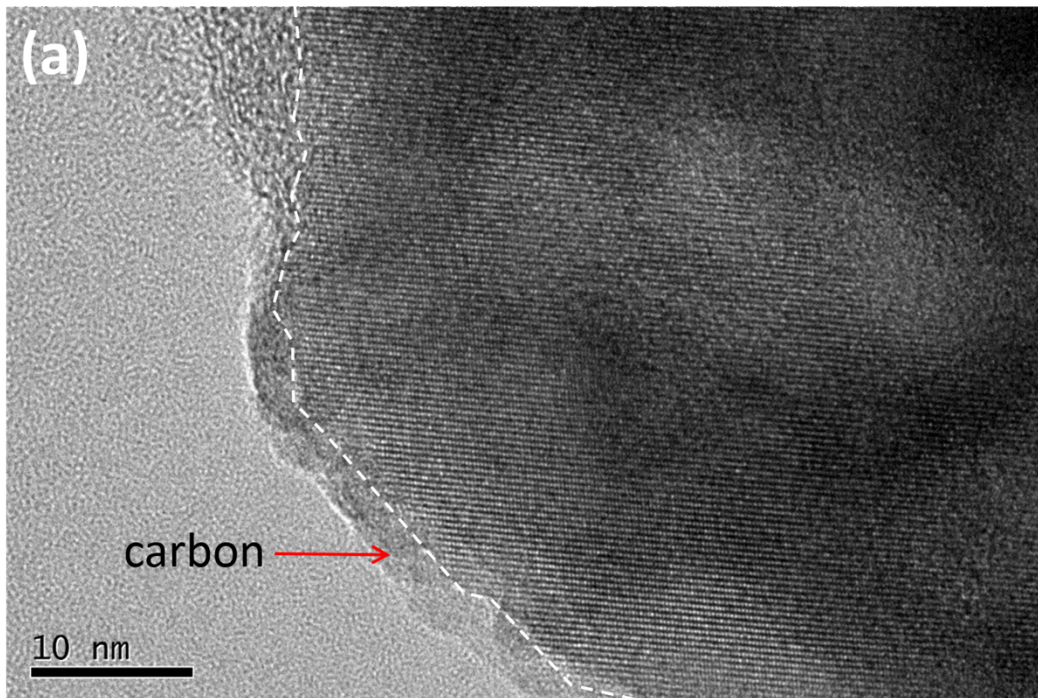


Figure S1. HR-TEM images of (a) pristine and (b) Ag-embedded LMPs. White guide lines indicate the border of LMP and carbon.