

Supplementary Material (ESI) for Nanoscale
This journal is © The Royal Society of Chemistry 2012

A Self-assembly Aptasensor Based on Thick-shell Quantum Dots for Sensing of Ochratoxin A

Xianfeng Chu,^{a,†} Xiaowen Dou,^{a,†} Ruizheng Liang,^b Menghua Li,^a Weijun Kong,^a Xihui Yang,^a
Jiaoyang Luo,^a and Meihua Yang^{*a,c} and Ming Zhao^d

^a Institute of Medicinal Plant Development, Chinese Academy of Medical Sciences & Peking Union Medical College, Beijing 100193, China.

^b State Key Laboratory of Chemical Resource Engineering, Beijing University of Chemical Technology, Beijing 100029, China.

^d Institute of Hainan Branch of Medicinal Plant Development, Chinese Academy of Medical Sciences & Peking Union Medical College, Wanning 571533, China.

^c School of Pharmacy, Jiangsu University, Zhenjiang 212013, China.

* Corresponding author. Phone: +86-10-57833277. Fax: +86-10-62896288. E-mail:
yangmeihua15@hotmail.com.

Tab. S1 DNA sequences used in this study

Strand ID	Oligonucleotides sequence (5'→3')
a-ssDNA1	(A*) ₅₅ -GATC <u>GGGTGTGGGTGG</u> CGTAAAGGGAGCATCGGACA
phosphorothioates	a-ssDNA2 (A*) ₄₅ -GATC <u>GGGTGTGGGTGG</u> CGTAAAGGGAGCATCGGACA
ssDNA	a-ssDNA3 (A*) ₃₀ -GATC <u>GGGTGTGGGTGG</u> CGTAAAGGGAGCATCGGACA
	c-ssDNA <u>CCACCCACACCC</u> CC-(A*) ₅₅
	sA-ssDNA (A*) ₅₅
Anti-OTA	Aptamer GATC <u>GGGTGTGGGTGG</u> CGTAAAGGGAGCATCGGACA

Note: the underline stands for the complementary sequence.

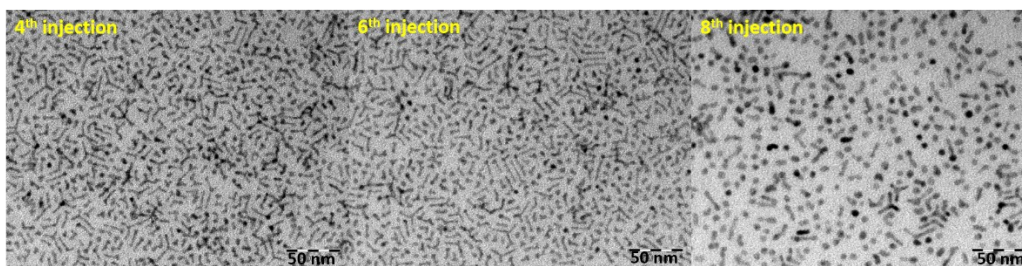


Fig. S1 TEM images of the CdSe/CdS QDs with increased injection times (4th, 6th and 8th).

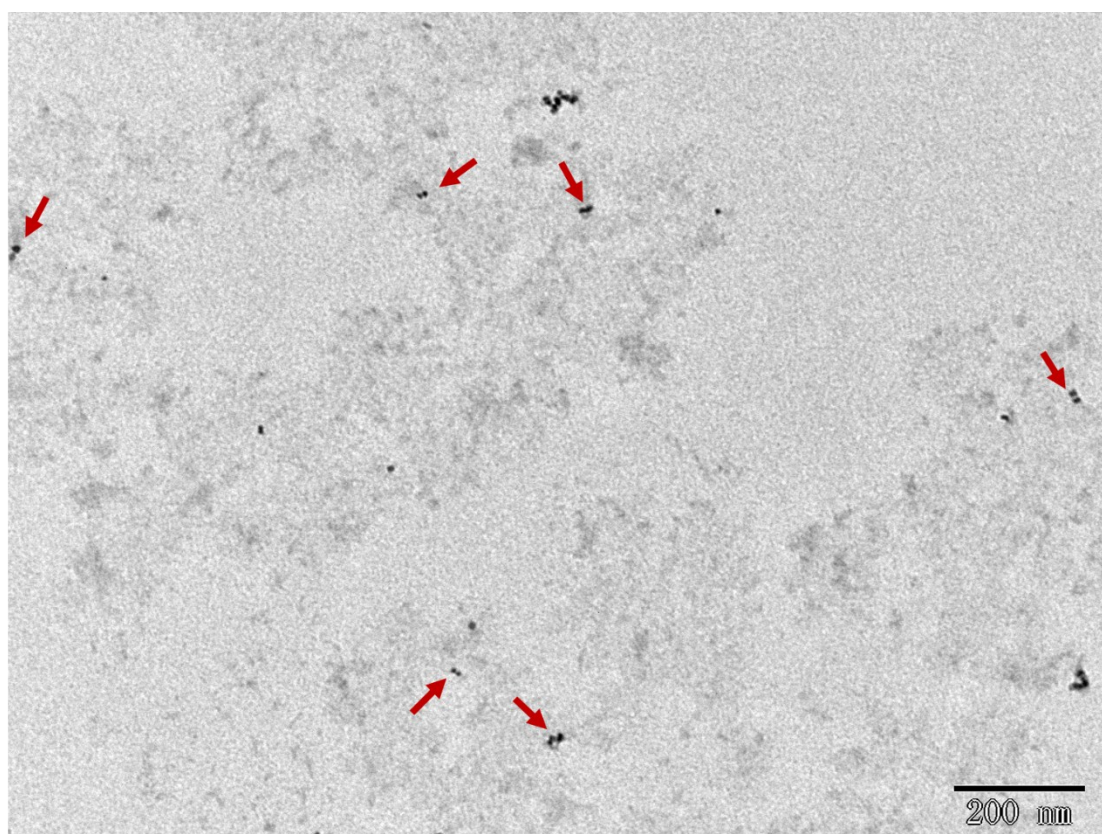


Fig. S2 TEM image of one c-ssDNA-QD conjugate hybridization with one a-ssDNA1-QD conjugate.

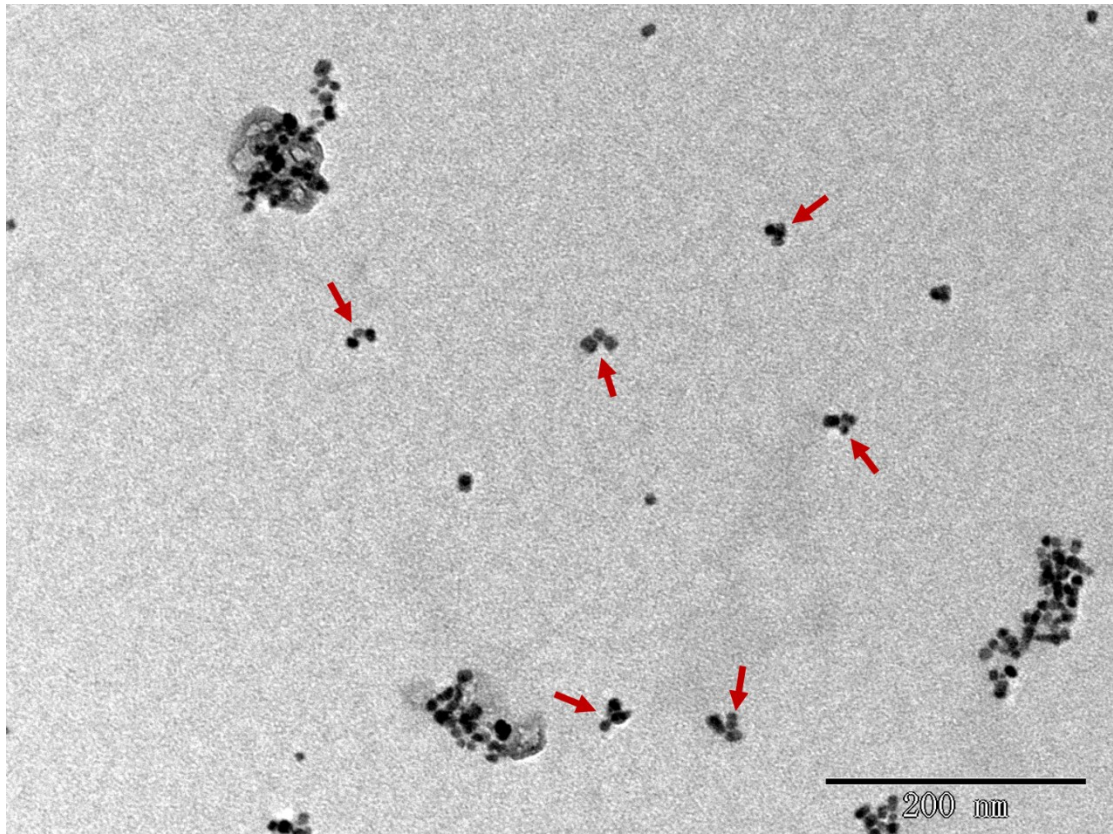


Fig. S3 TEM image of one c-ssDNA-QD conjugate hybridization with two a-ssDNA2-QD conjugates.

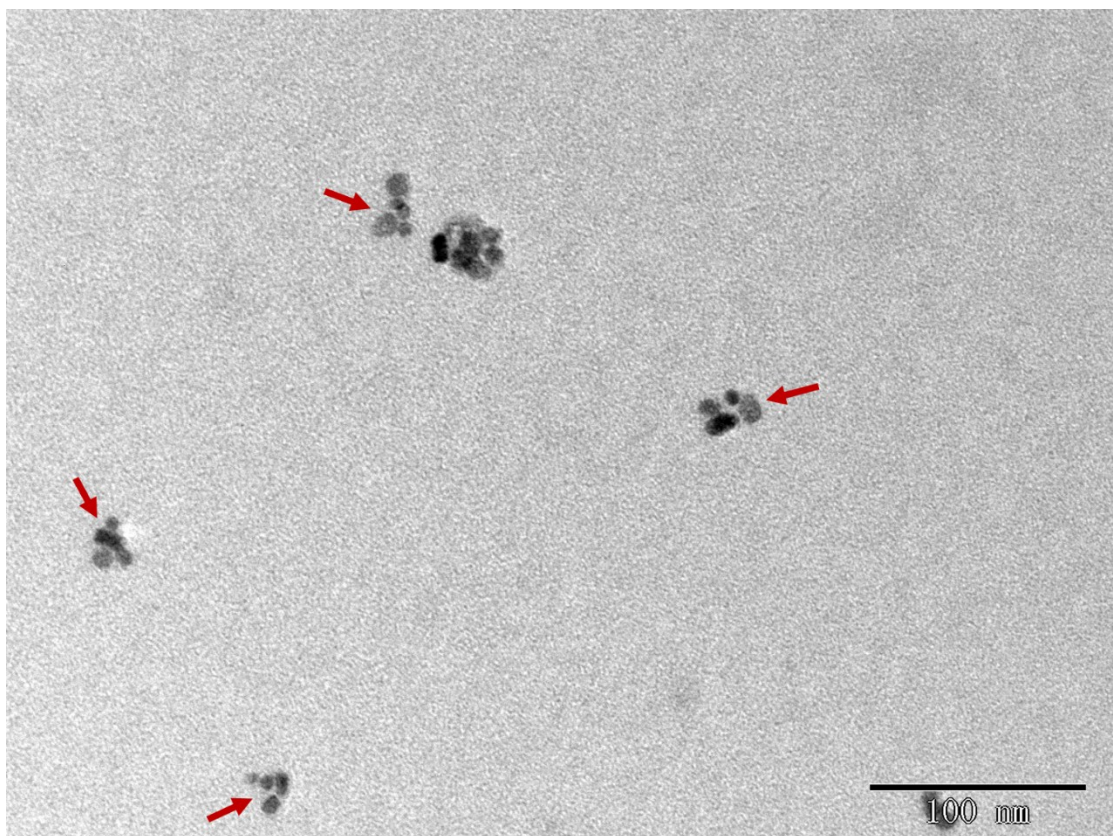


Fig. S4 TEM image of one c-ssDNA-QD conjugate hybridization with three a-ssDNA2-QD conjugates.