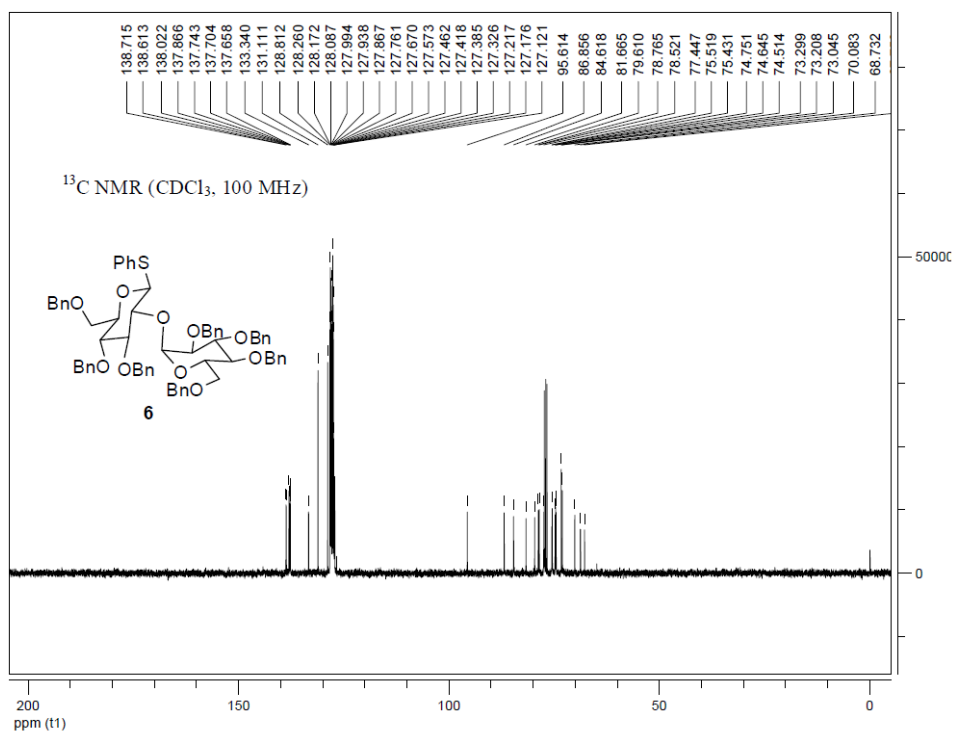
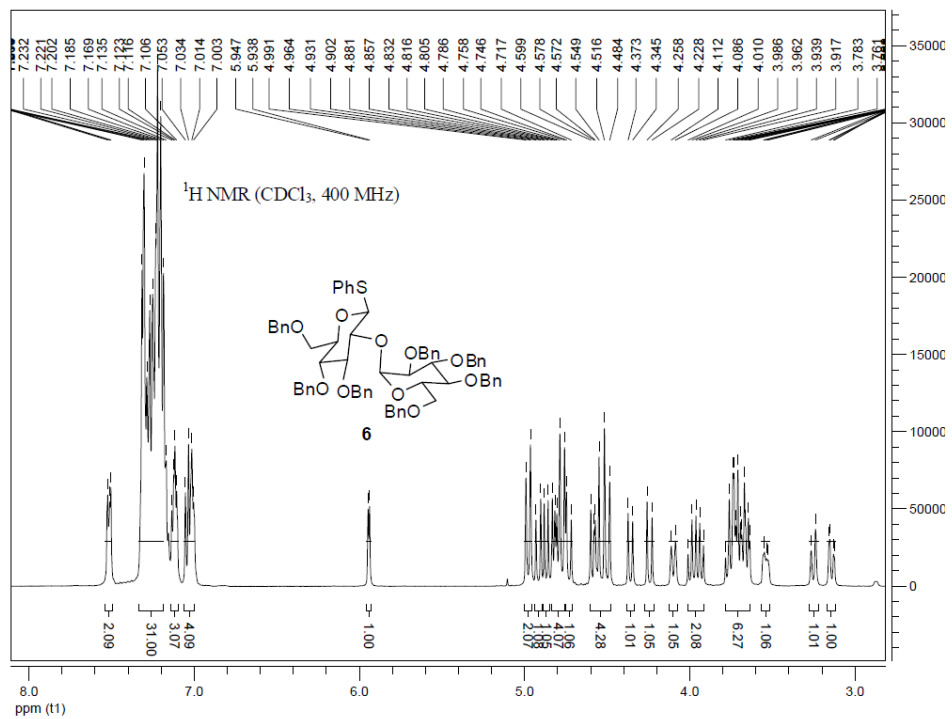


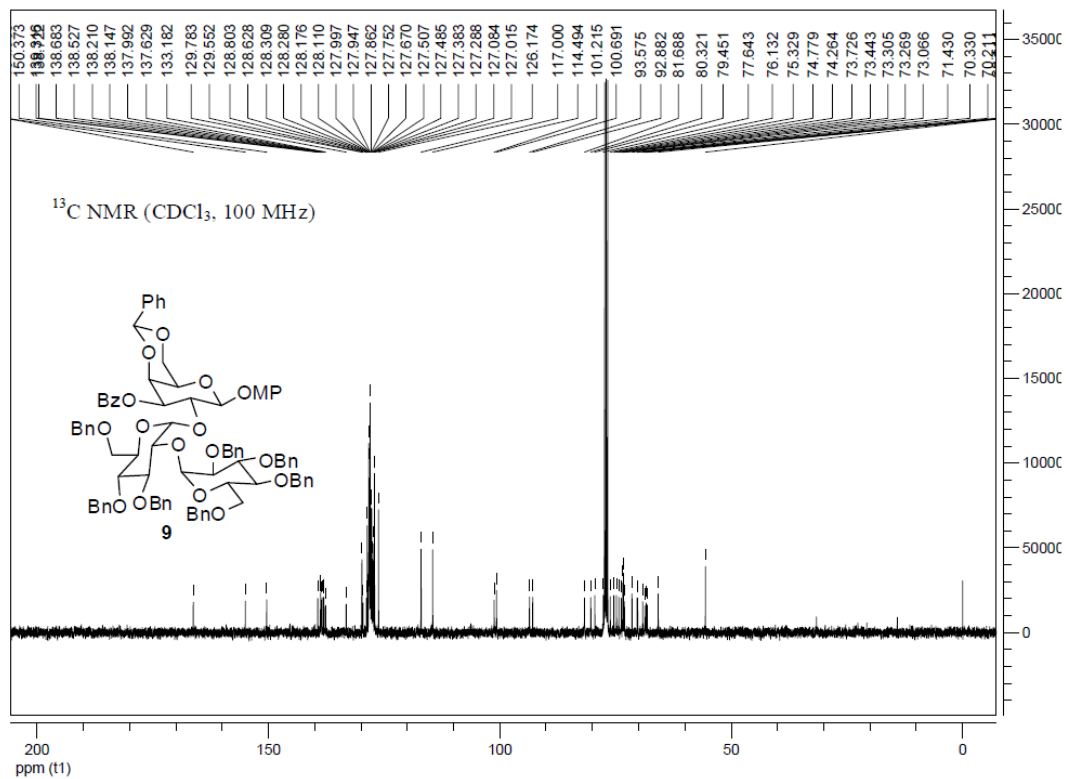
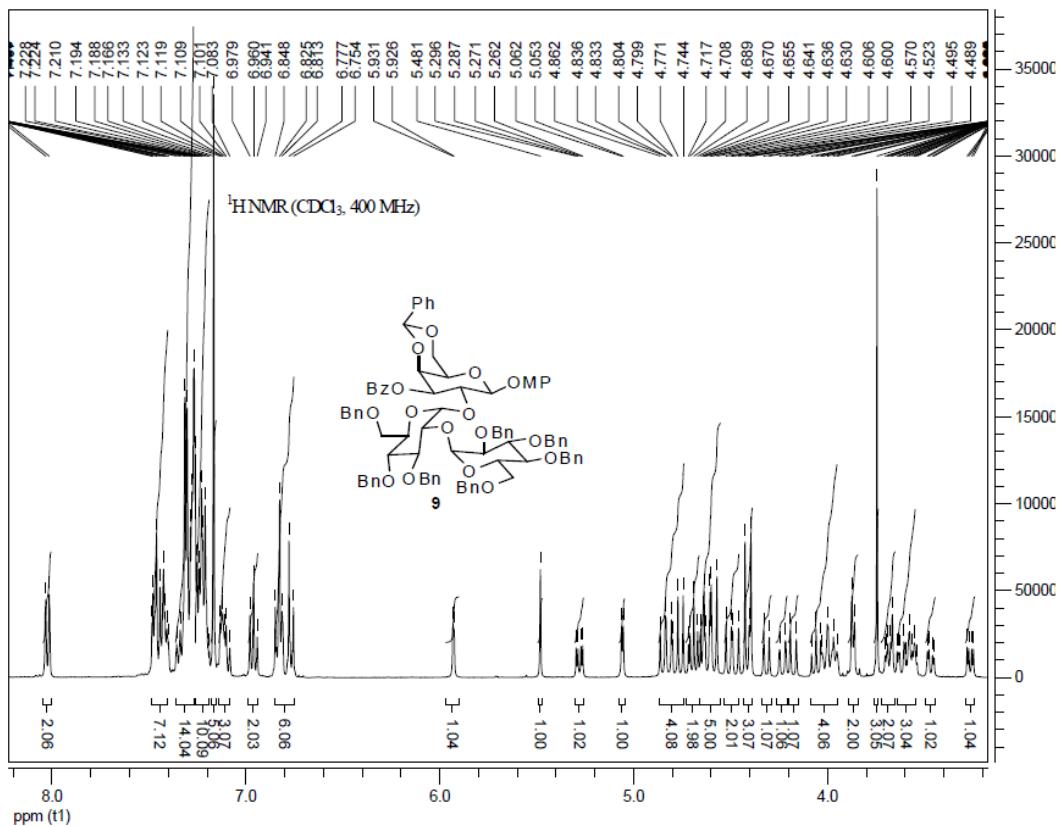
Supplementary Information

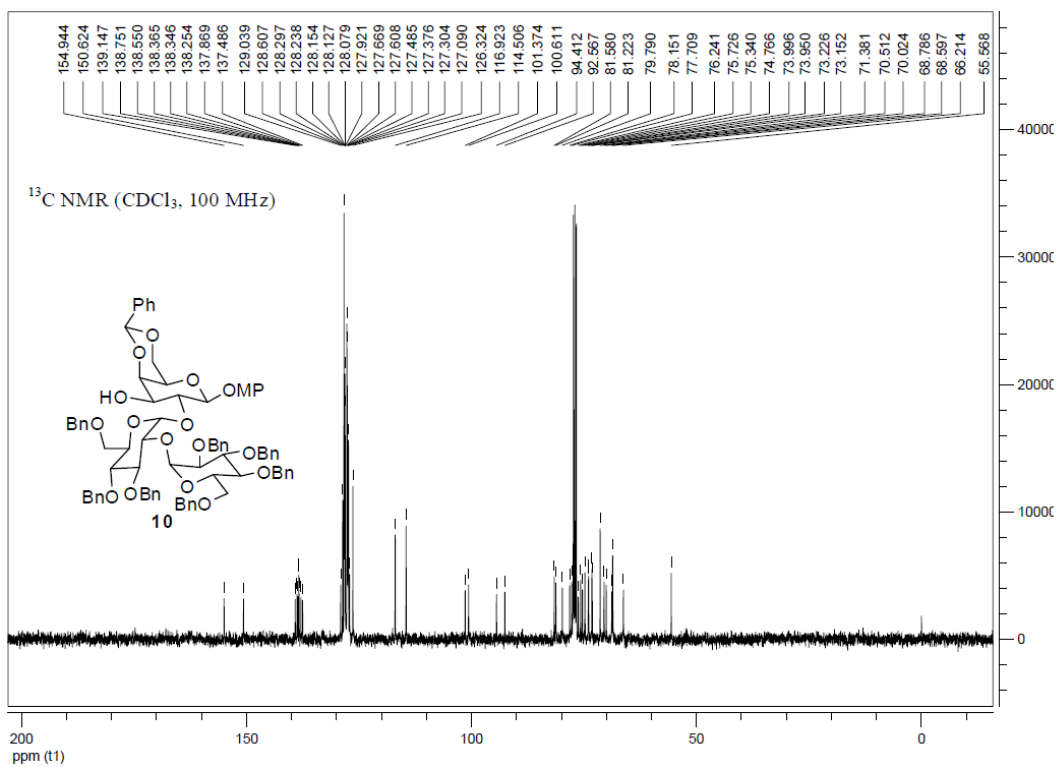
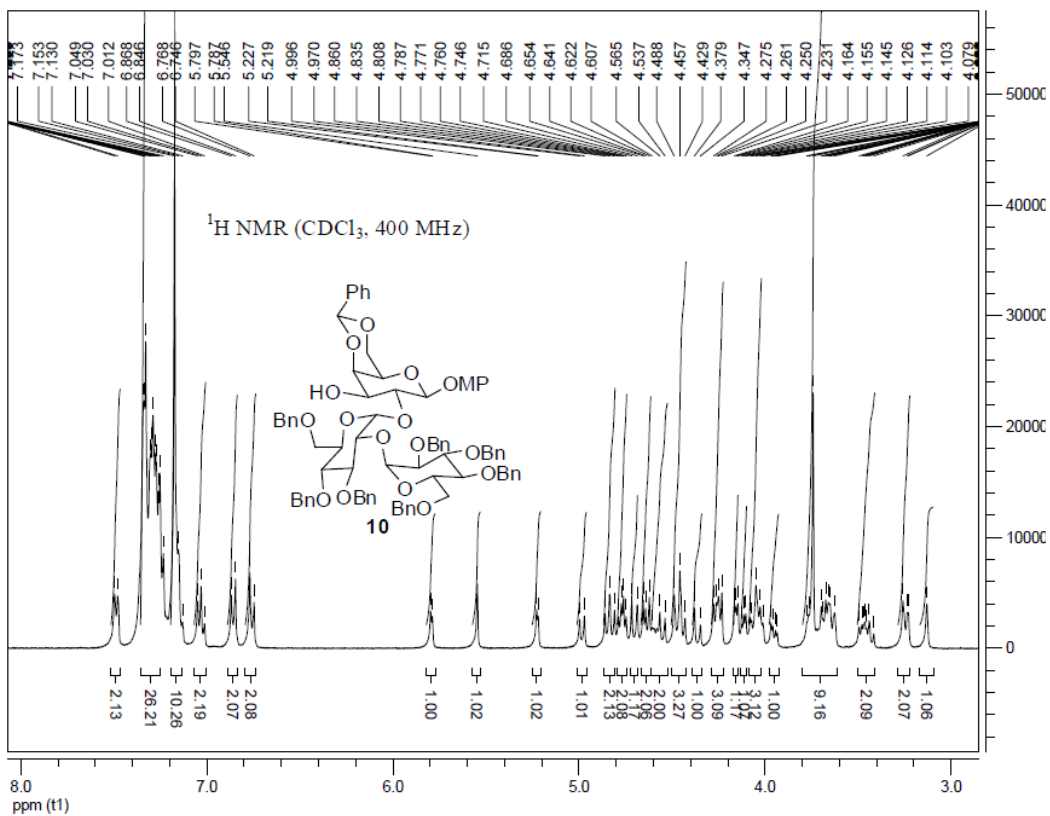
Chemical Synthesis of Outer Core Oligosaccharide of *Escherichia coli* R3 and Immunological Evaluation

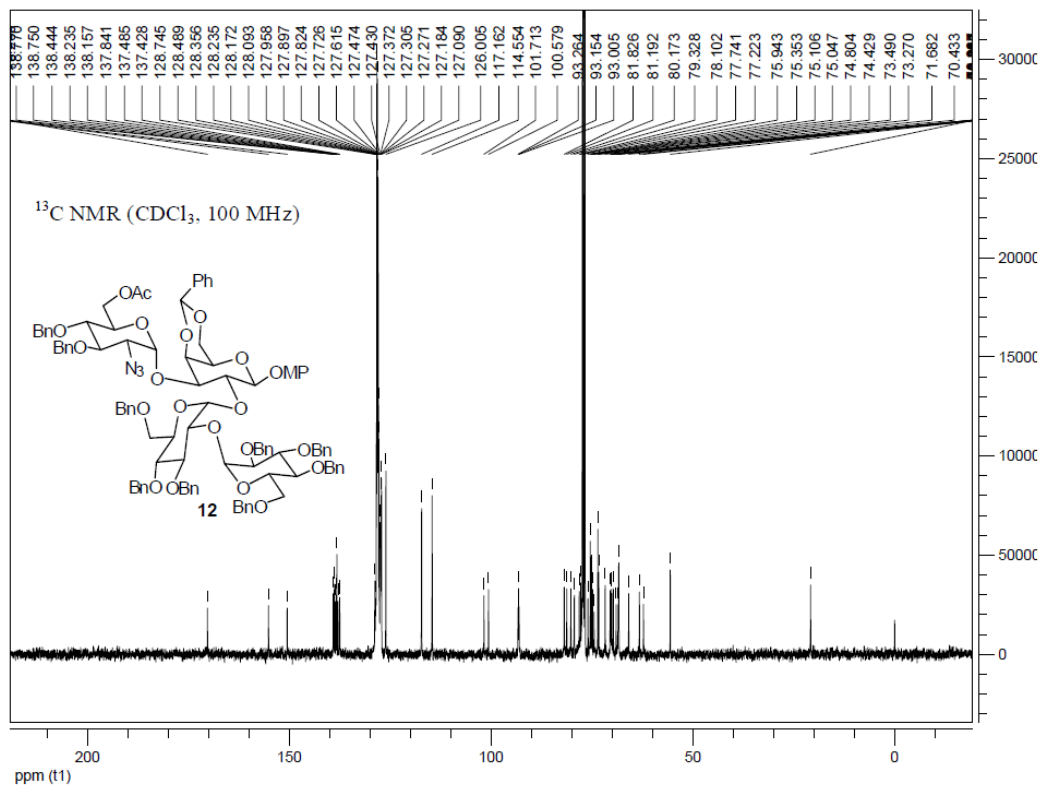
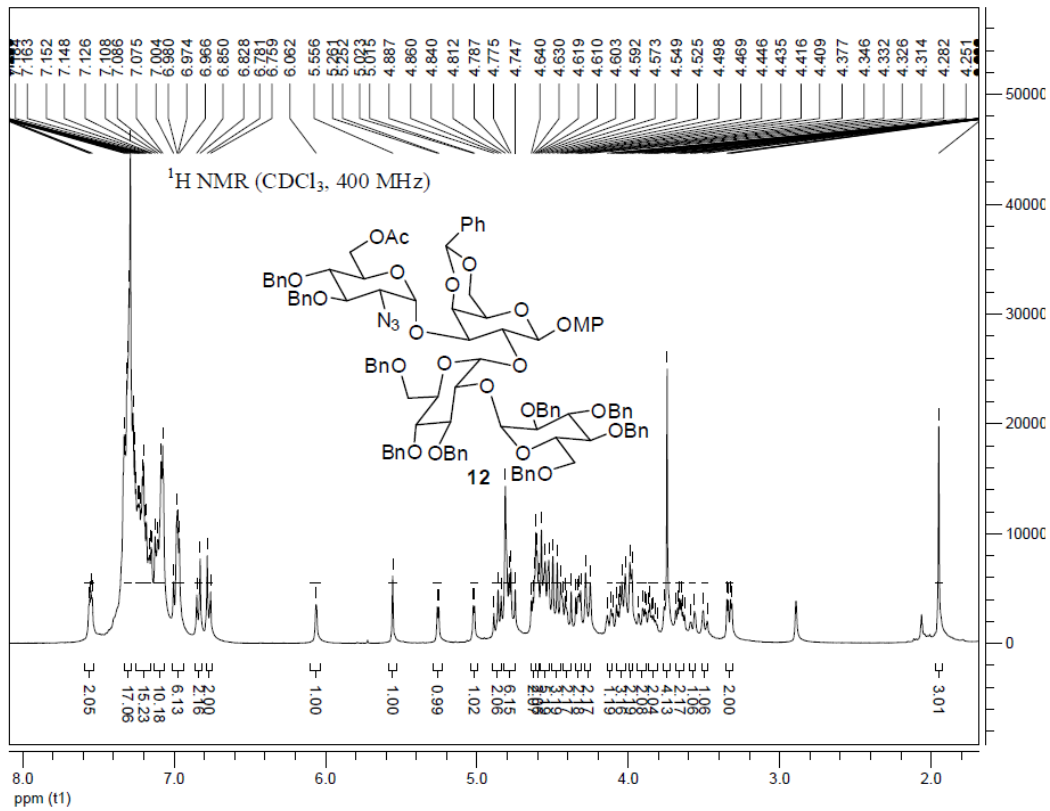
Wenjing Shang,^{a†} Zhongying Xiao,^{b†} Zaikuan Yu,^{b†} Na Wei,^b Guohui Zhao,^b Qing Zhang,^b Mohui Wei,^b Xuan Wang,^b Peng George Wang,^{*a, b} and Tiehai Li^{*b}

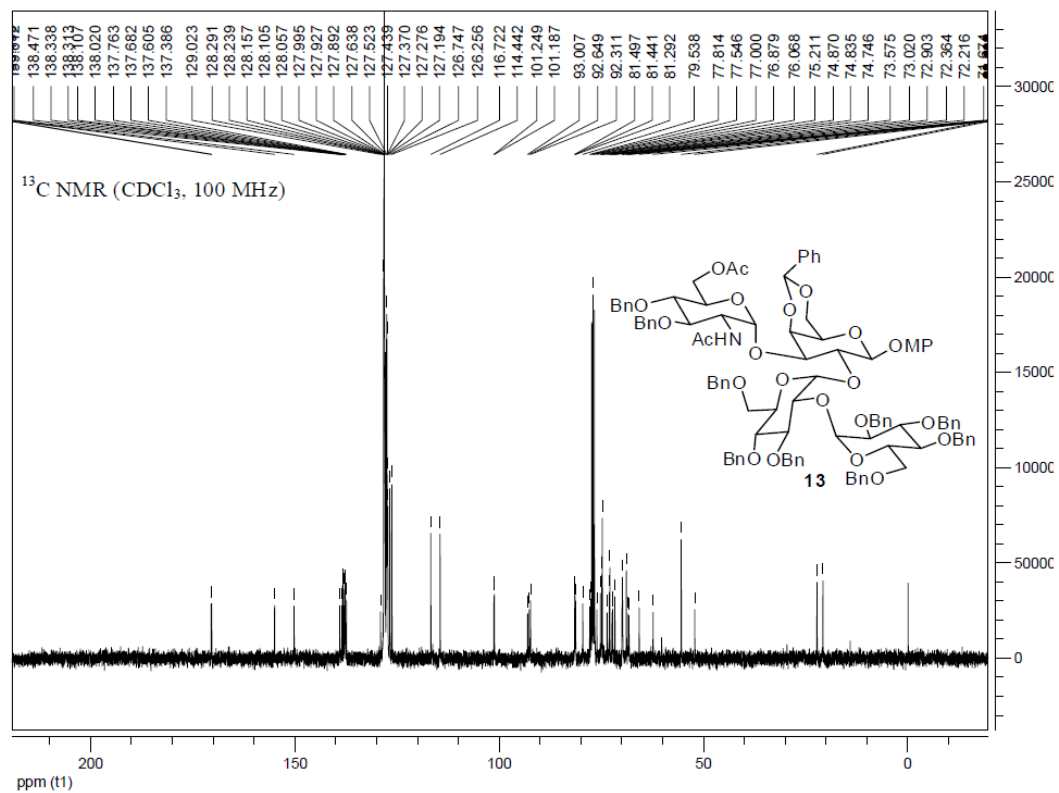
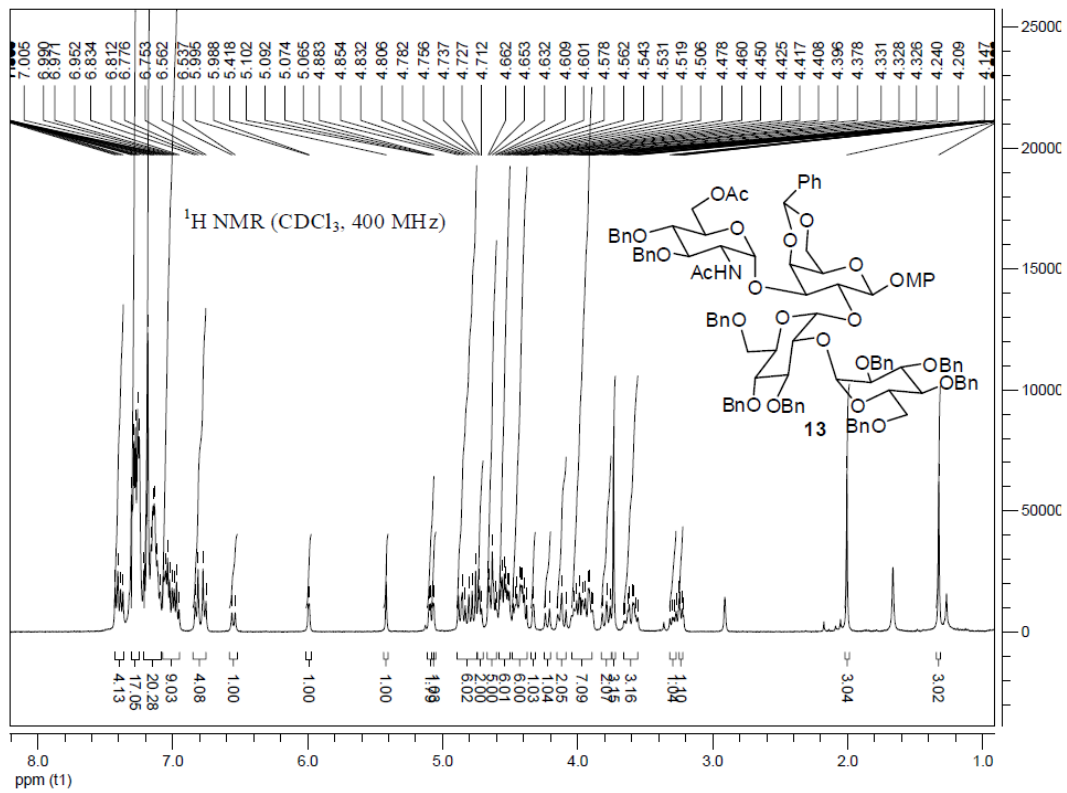
¹ H NMR and ¹³ C NMR spectra of compound 6	S2
¹ H NMR and ¹³ C NMR spectra of compound 9	S3
¹ H NMR and ¹³ C NMR spectra of compound 10	S4
¹ H NMR and ¹³ C NMR spectra of compound 12	S5
¹ H NMR and ¹³ C NMR spectra of compound 13	S6
¹ H NMR and ¹³ C NMR spectra of compound 16	S7
¹ H NMR and ¹³ C NMR spectra of compound 1	S8
ESI HRMS of compound 1	S9
ESI HRMS of active ester modified pentasaccharide	S9
MALDI-TOF mass analysis of CRM ₁₉₇ and pentasaccharide-CRM ₁₉₇	S10
SDS Gel analysis of CRM ₁₉₇ and pentasaccharide-CRM ₁₉₇	S10
MALDI-TOF mass analysis of BSA and pentasaccharide-BSA	S10
SDS Gel analysis of BSA and pentasaccharide-BSA	S10

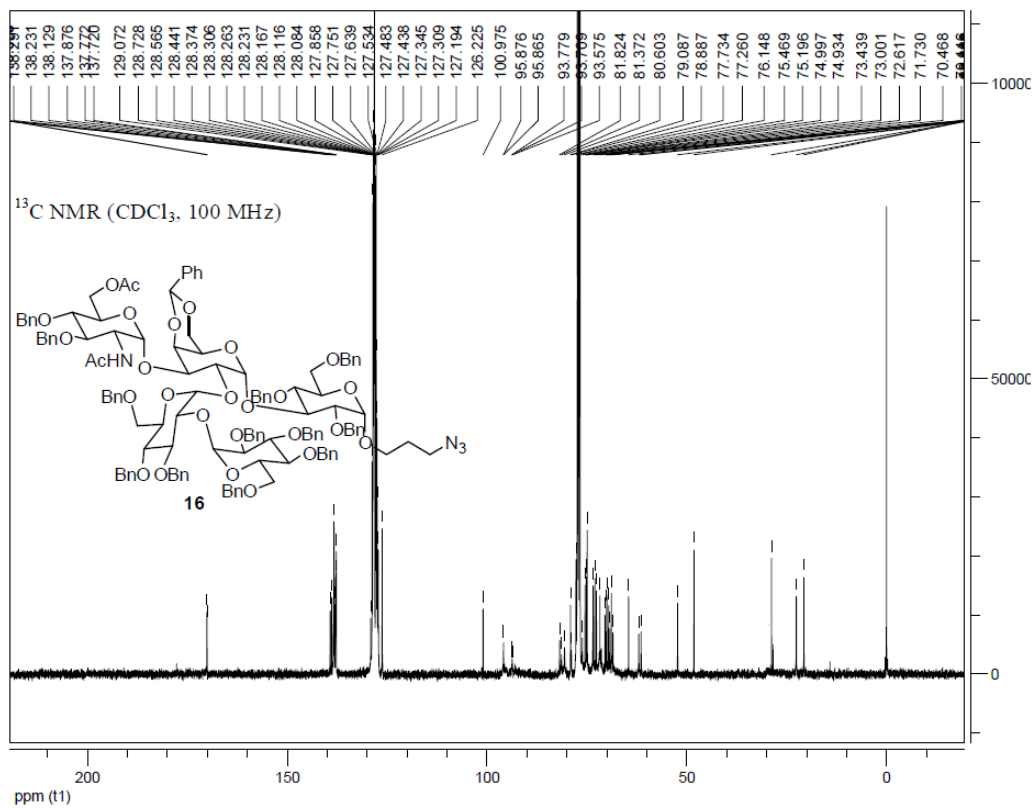
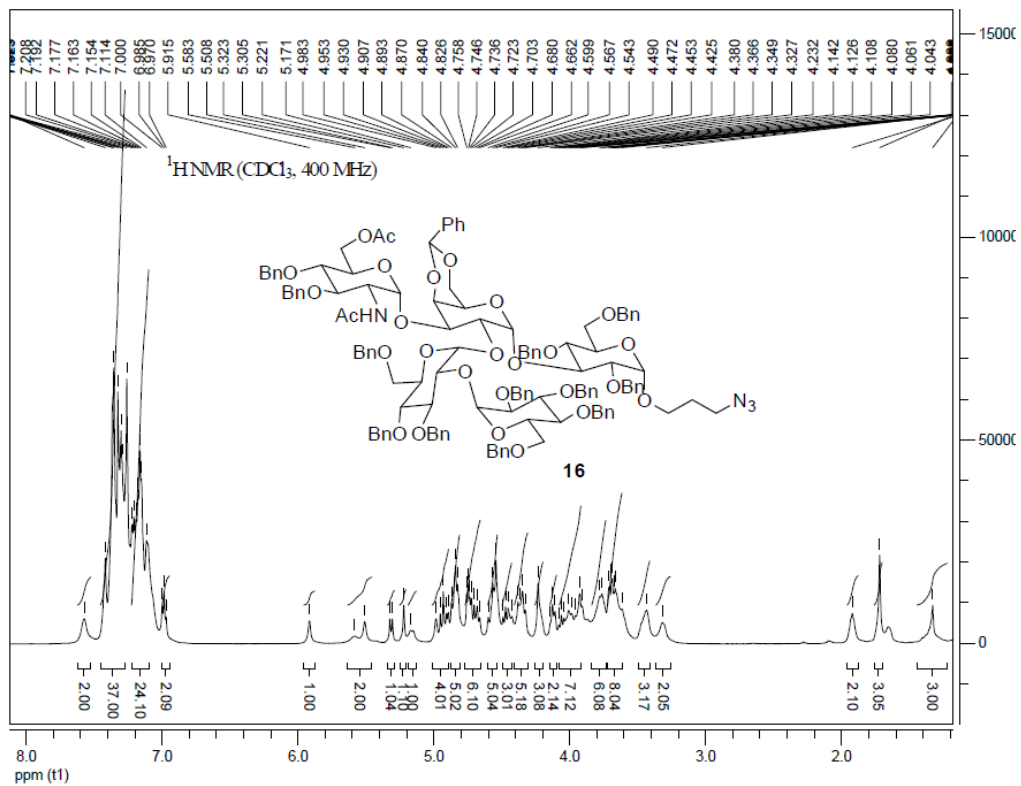




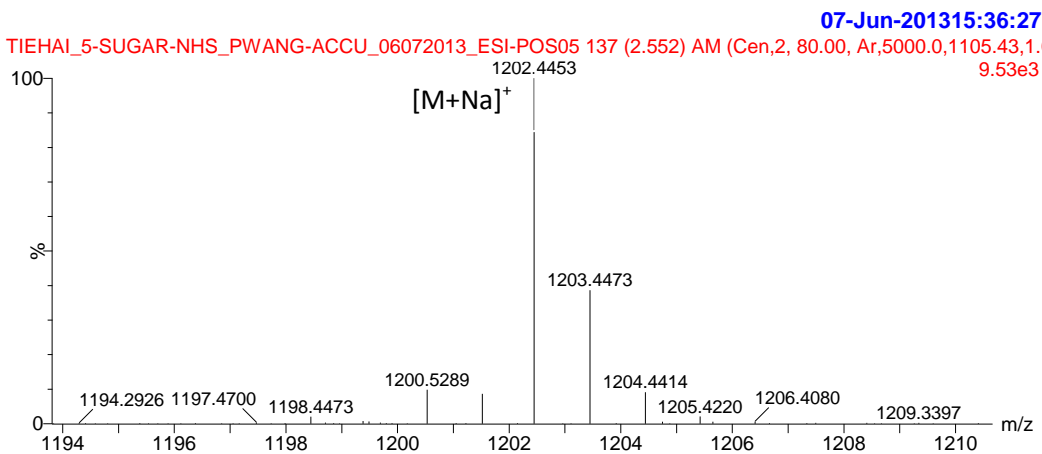
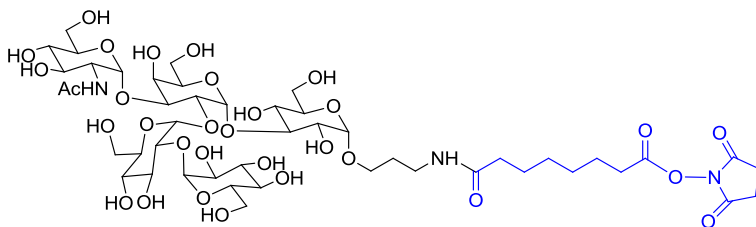
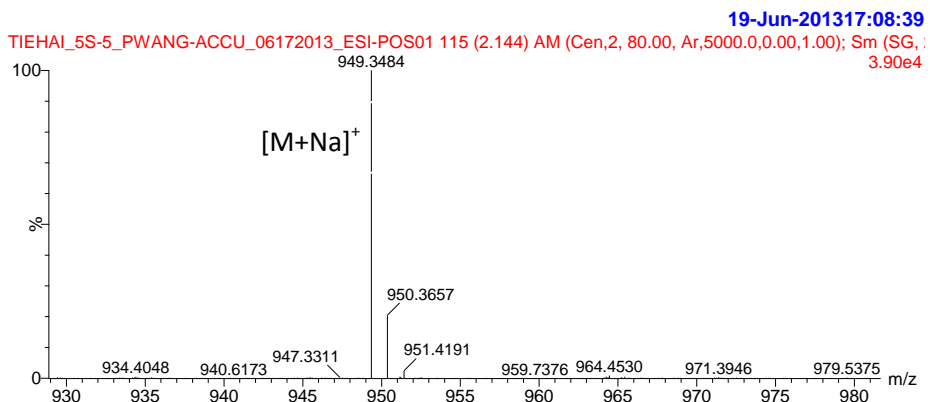
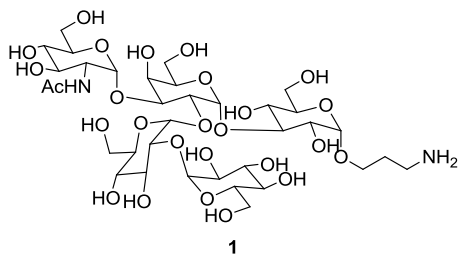




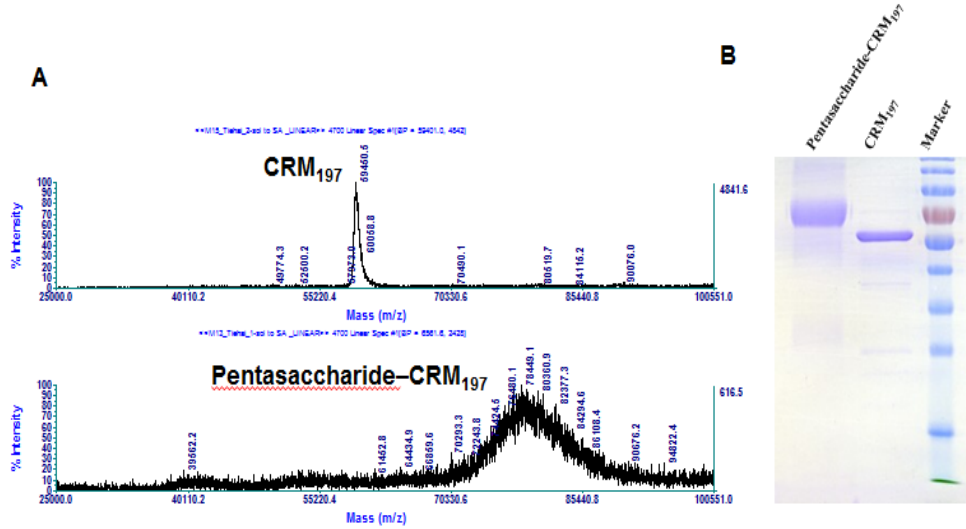




ESI HRMS of 1 and active ester modified pentasaccharide



MALDI-TOF mass (A) and SDS-PAGE (B) analysis of CRM₁₉₇ and pentasaccharide-CRM₁₉₇ (Figure S1)



MALDI-TOF mass (A) and SDS-PAGE (B) analysis of BSA and pentasaccharide-BSA (Figure S2)

