

Oligonucleotides Containing a *Ribo*-Configured Cyclohexanyl Nucleoside: Probing the Role of Sugar Conformation in Base Pairing Selectivity

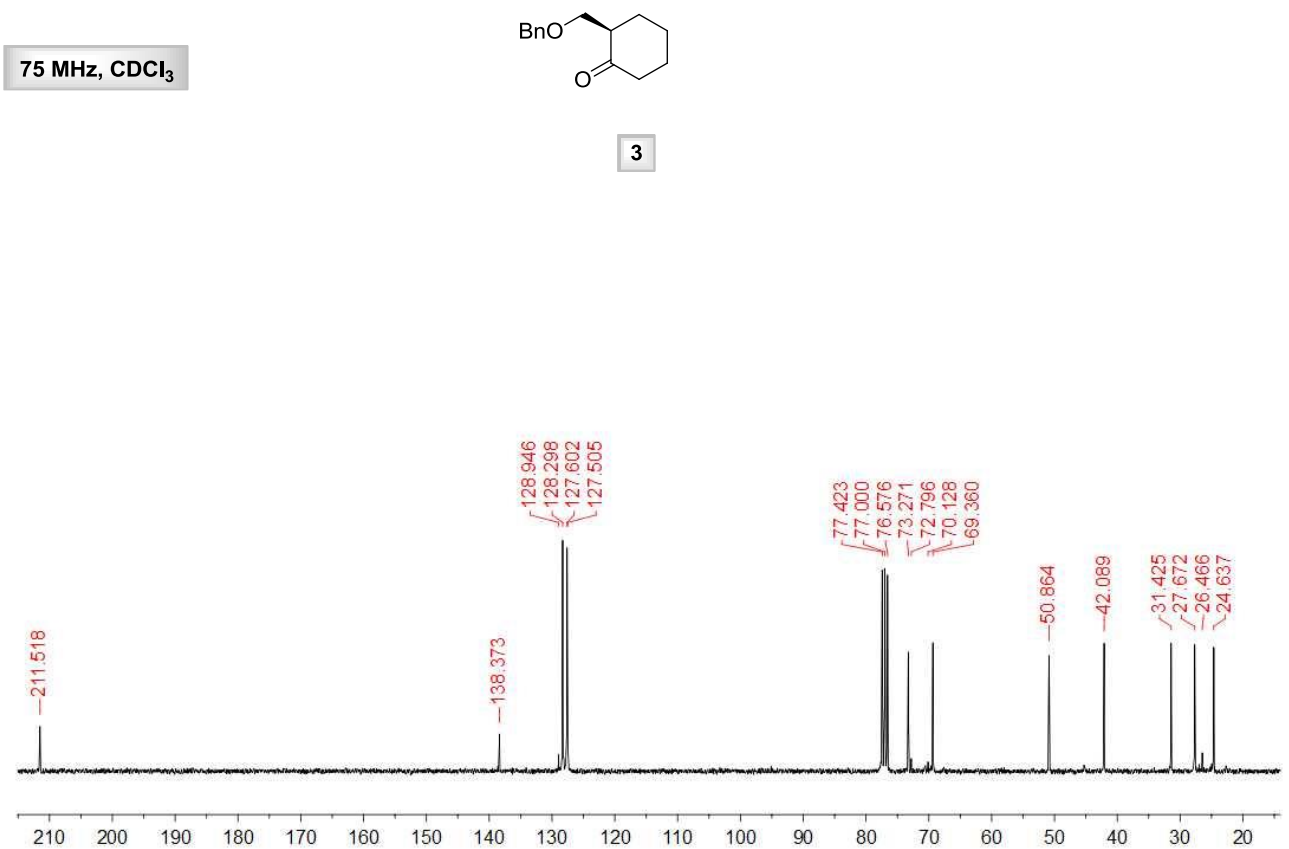
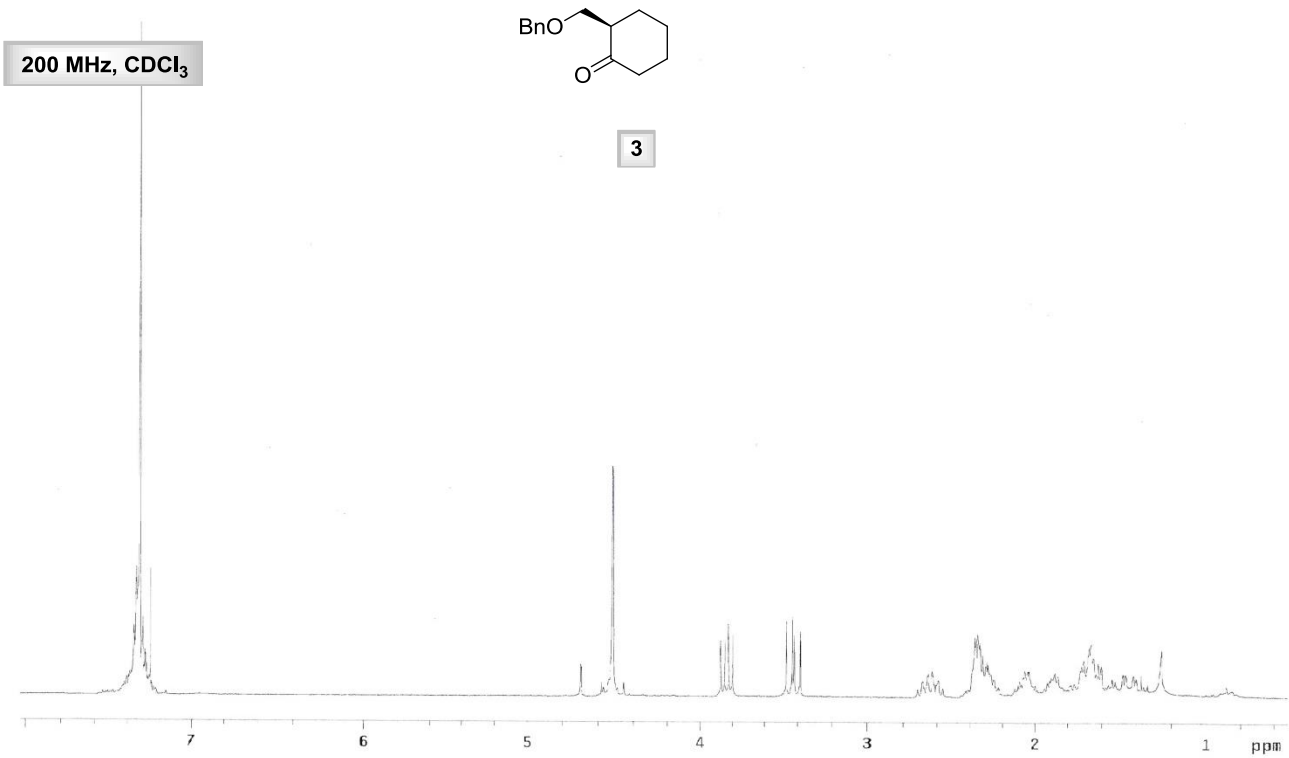
Concetta Paoletta,^a Daniele D'Alonzo,^{a,*} Guy Schepers,^b Arthur Van Aerschot,^b Giovanni Di
Fabio,^a Giovanni Palumbo,^a Piet Herdewijn^{b,*} and Annalisa Guaragna^a

^a*Dipartimento di Scienze Chimiche, Università degli Studi di Napoli Federico II, via Cintia, 80126*

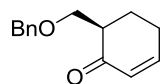
Napoli (Italy); ^b*Laboratory for Medicinal Chemistry, Rega Institute for Medical Research, KU*

Leuven, Minderbroedersstraat 10, 3000 Leuven (Belgium)

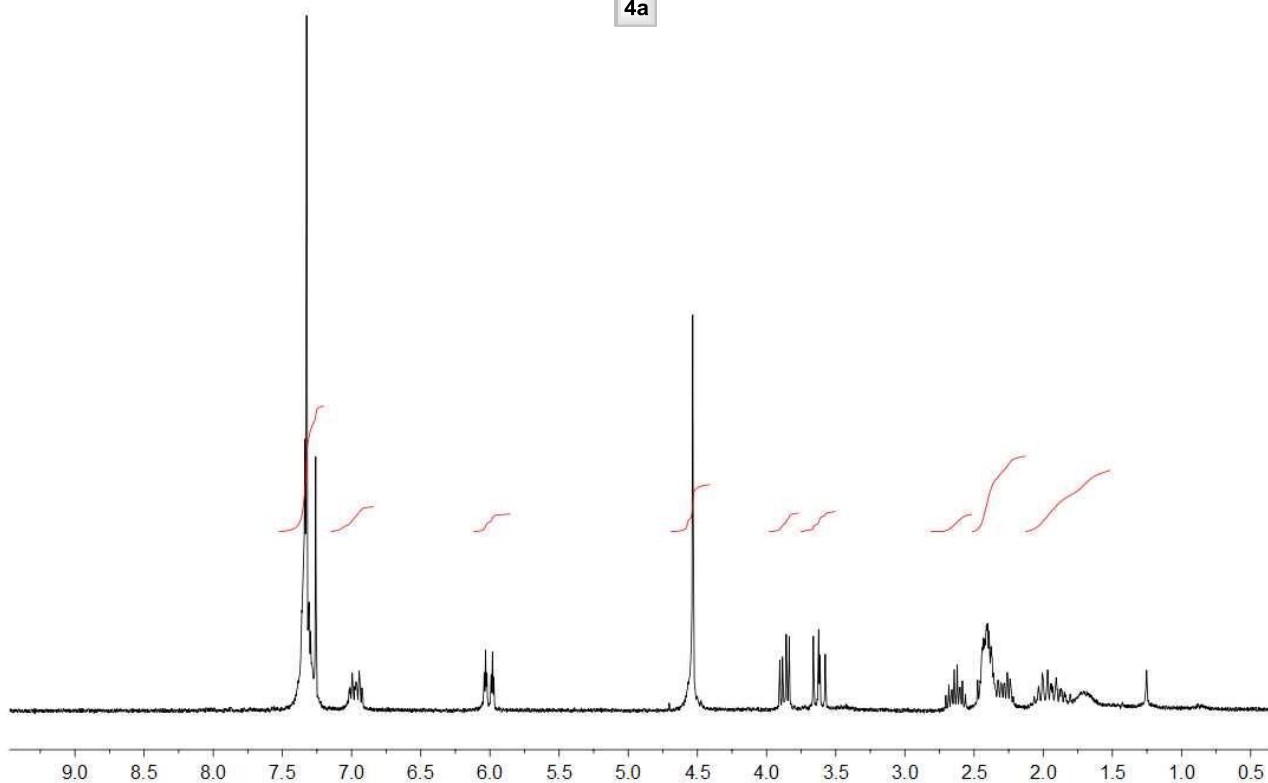
dandalonzo@unina.it; Piet.Herdewijn@rega.kuleuven.be



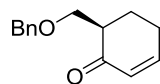
200 MHz, CDCl₃



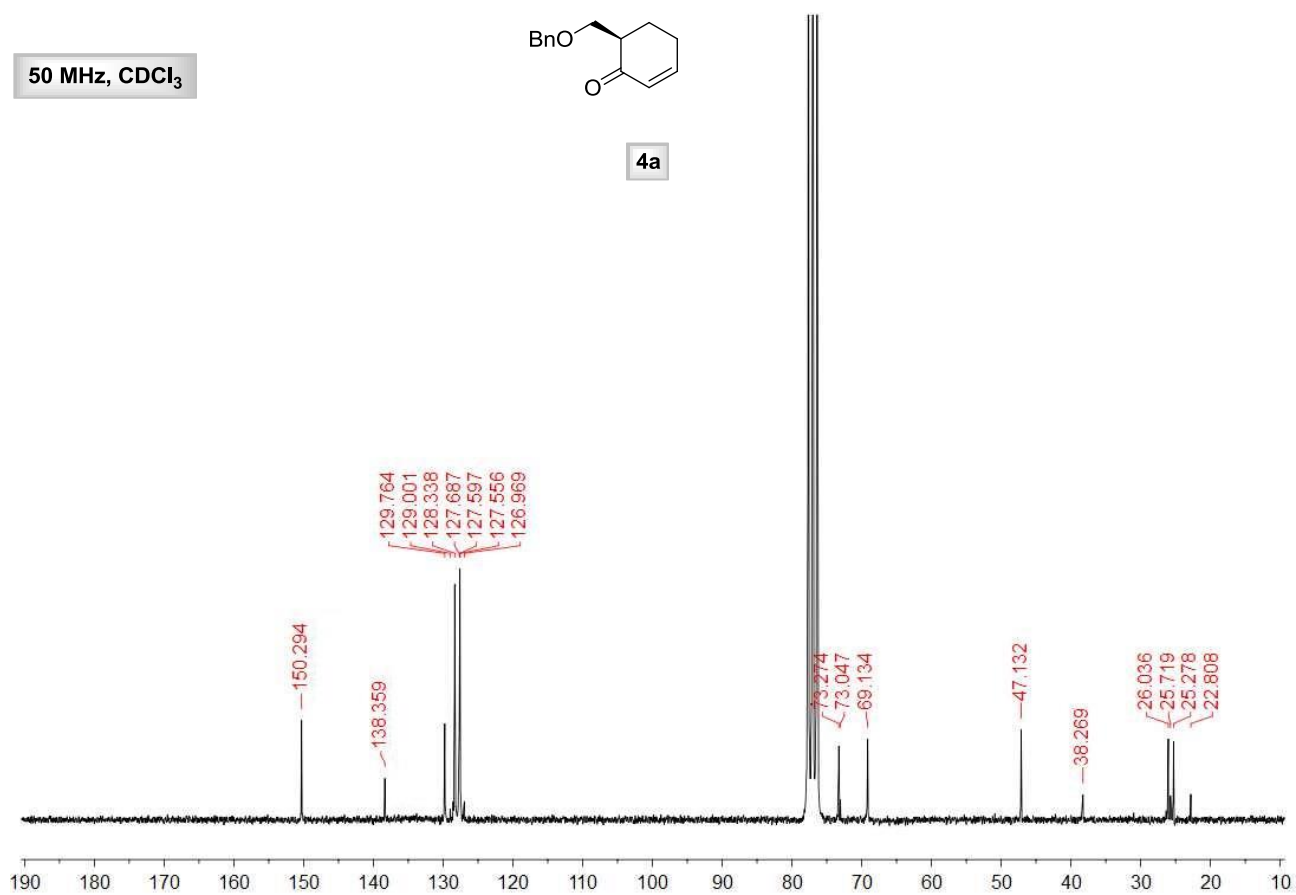
4a



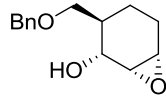
50 MHz, CDCl₃



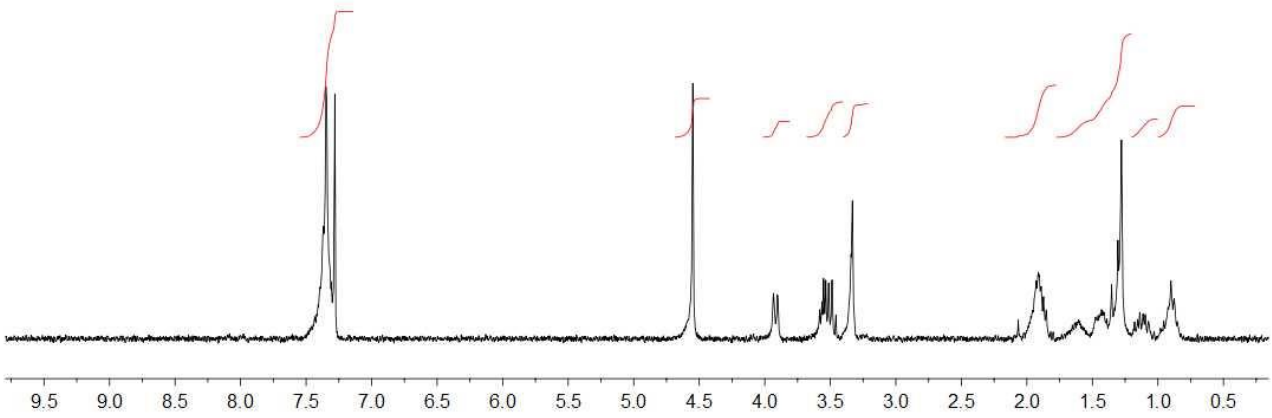
4a



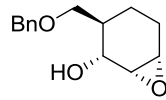
200 MHz, CDCl₃



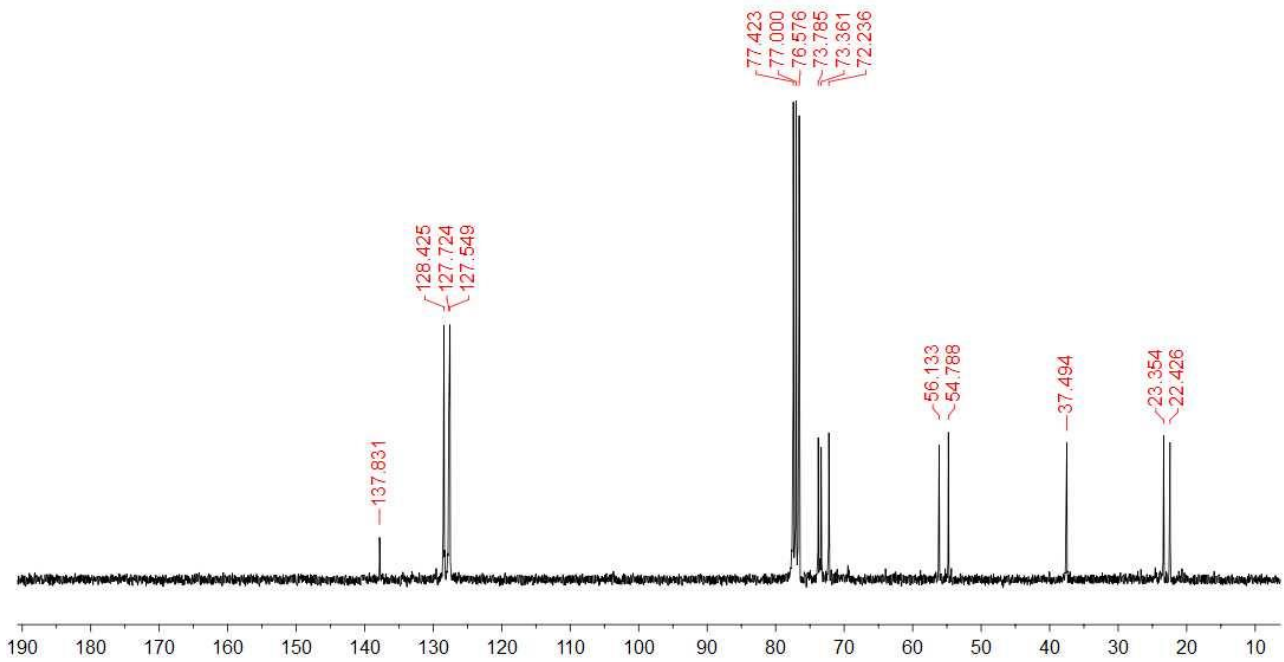
6



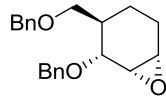
75 MHz, CDCl₃



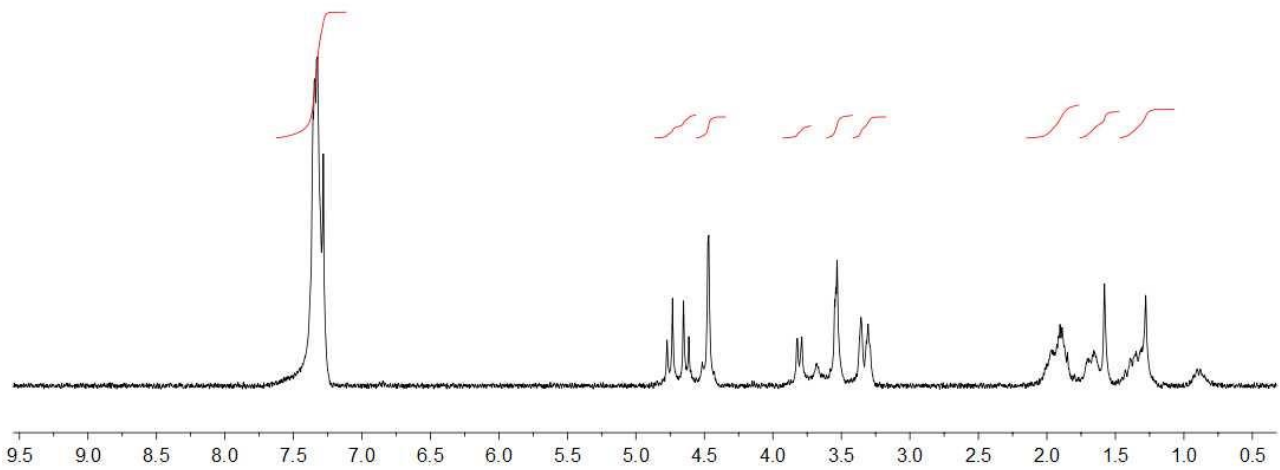
6



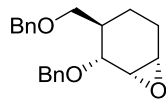
300 MHz, CDCl₃



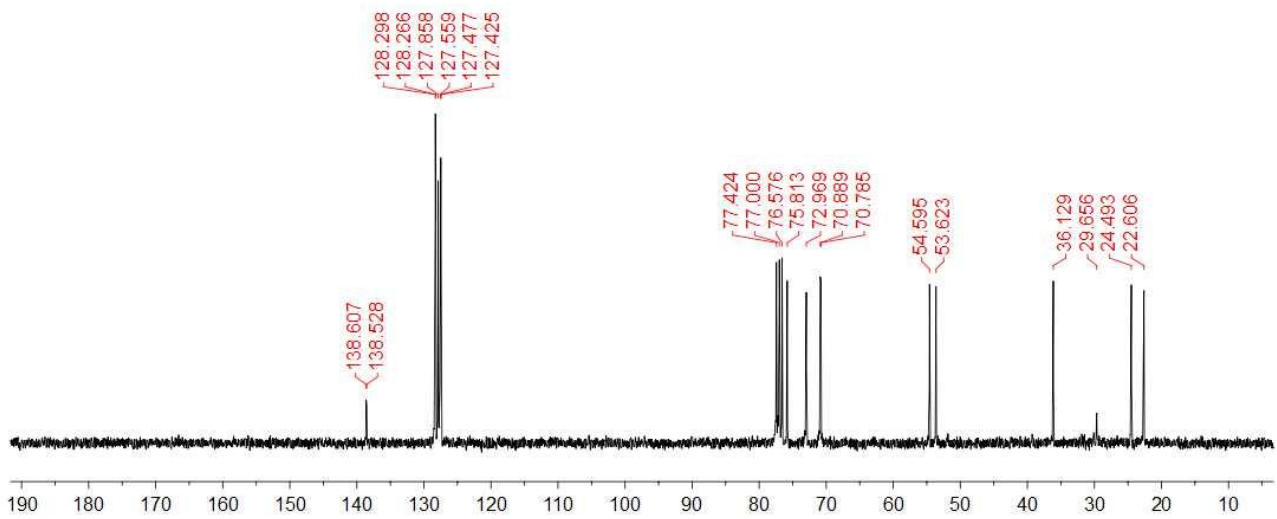
7



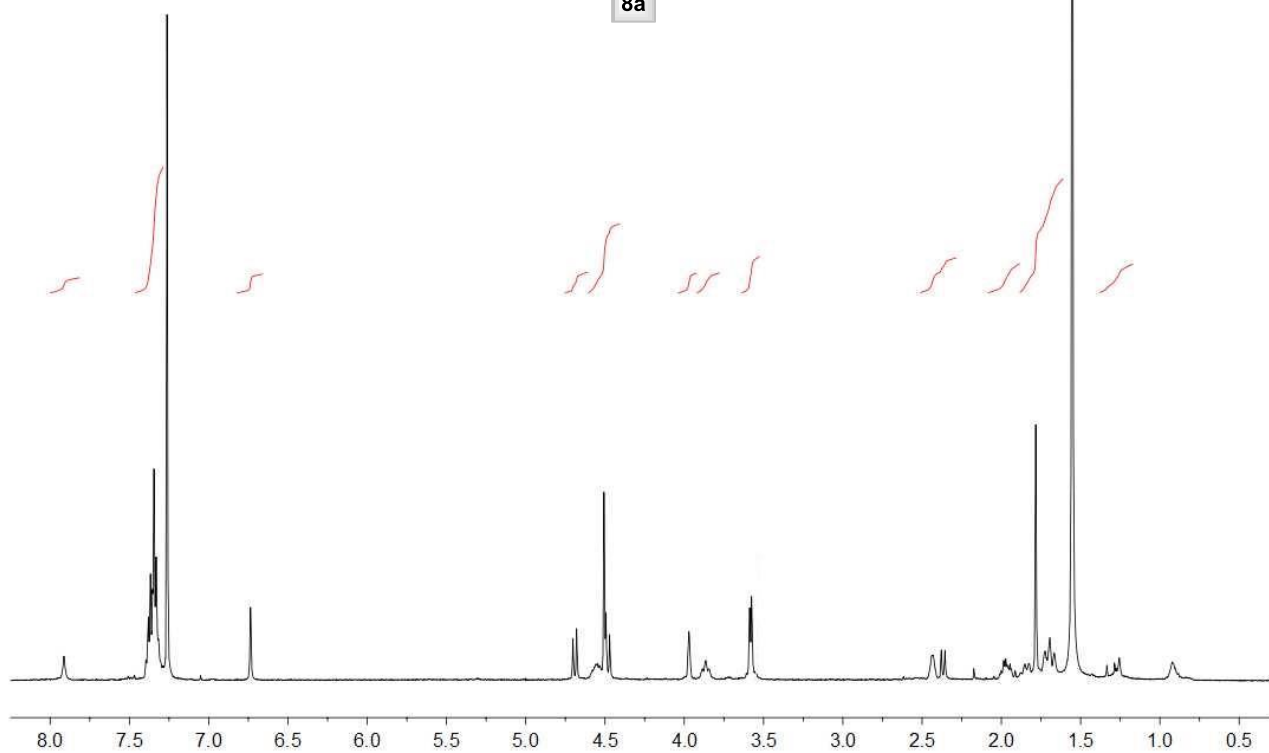
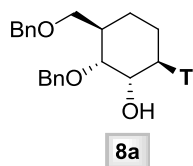
75 MHz, CDCl₃



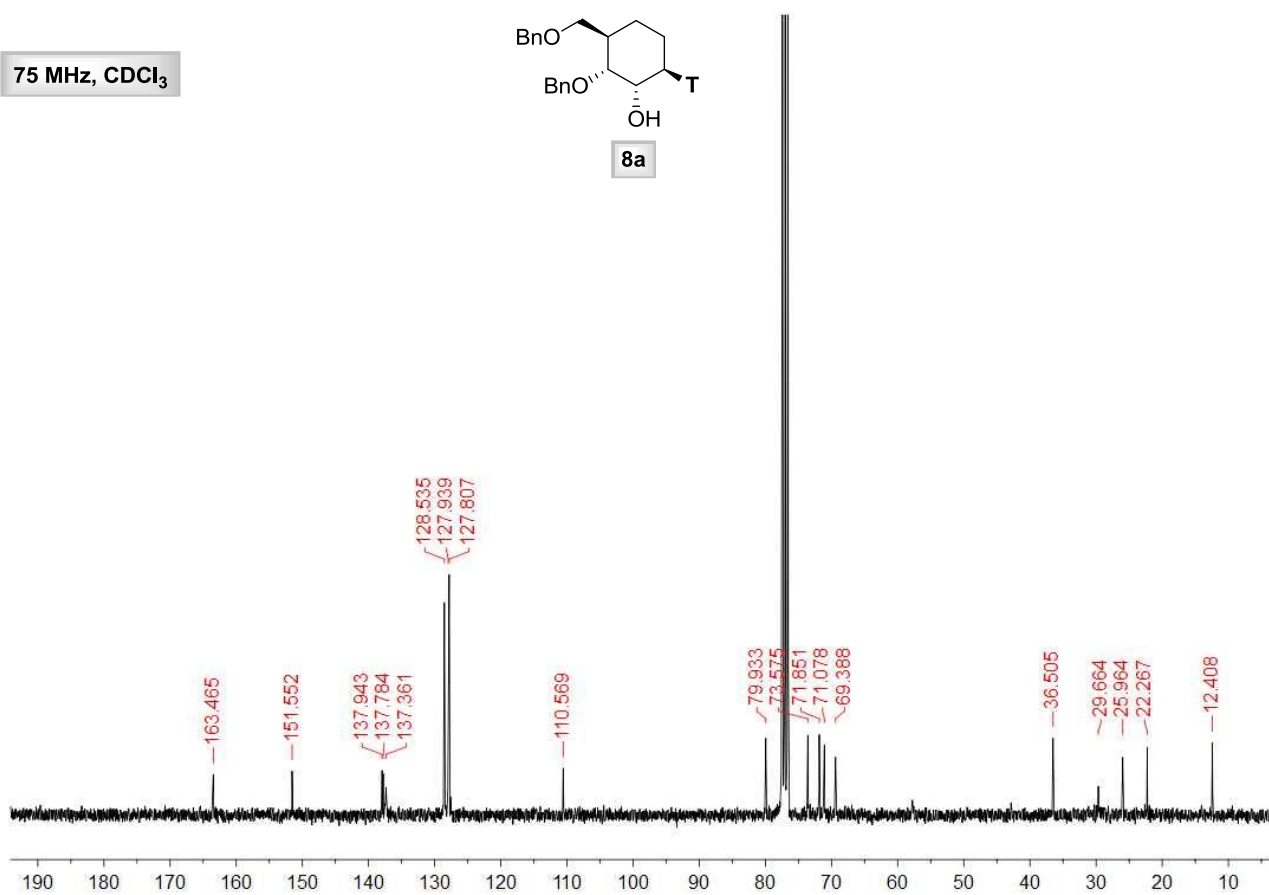
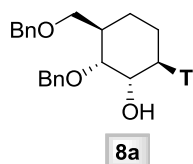
7



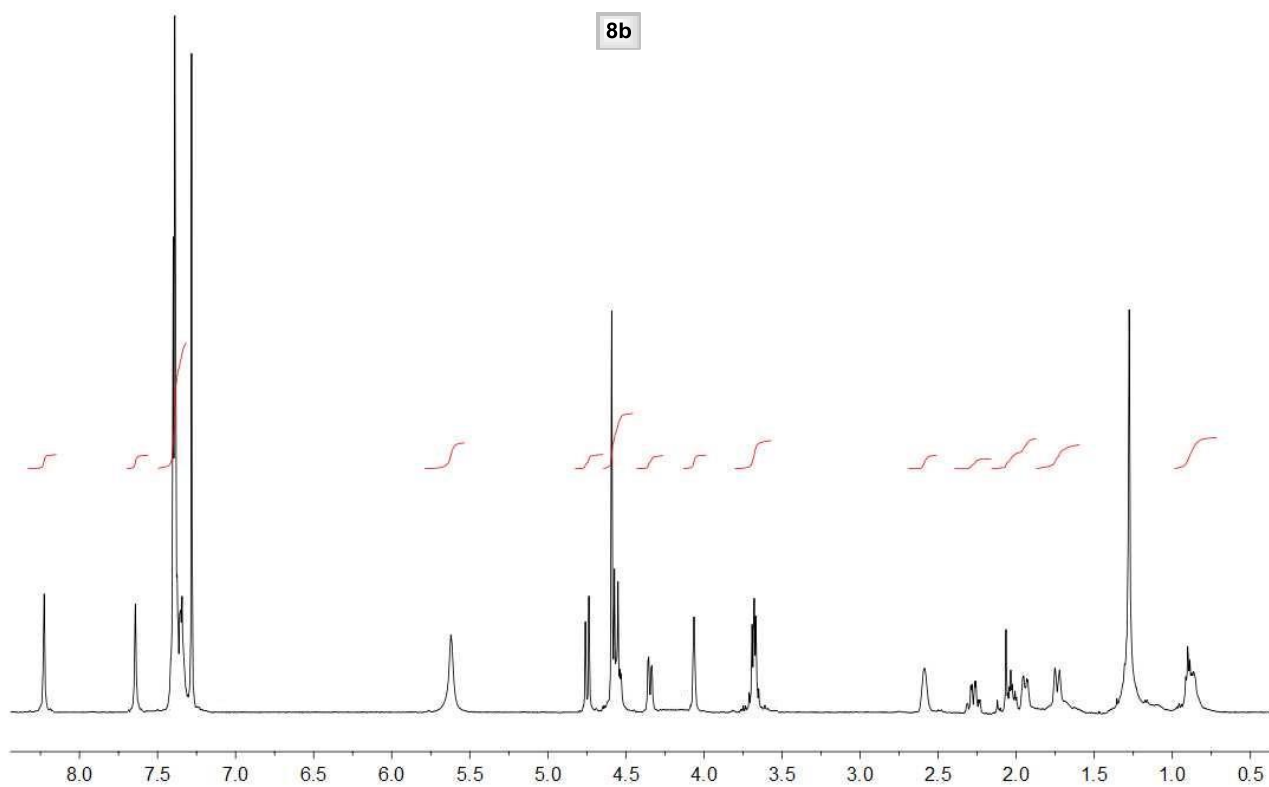
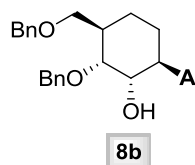
500 MHz, CDCl₃



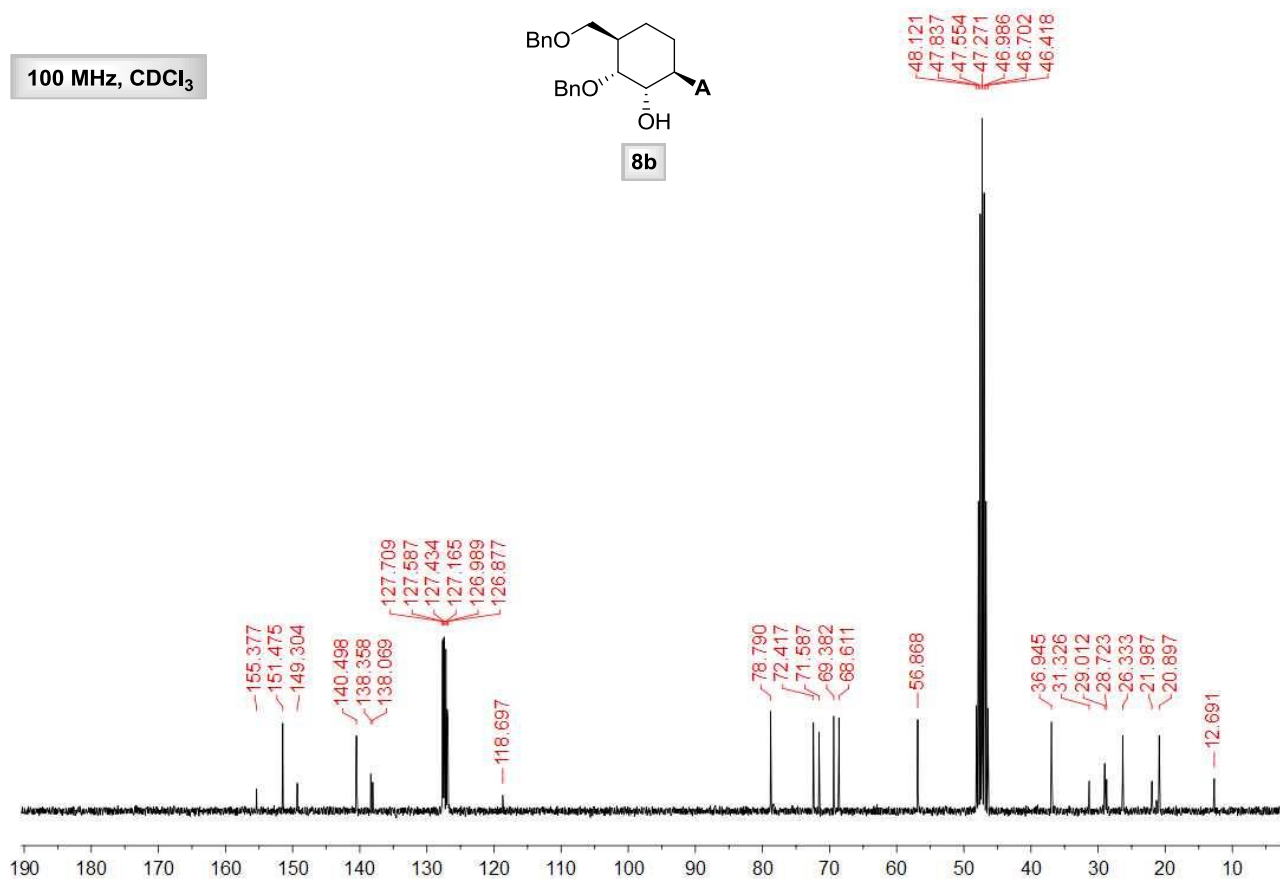
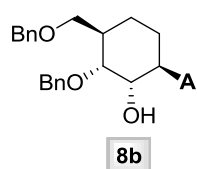
75 MHz, CDCl₃

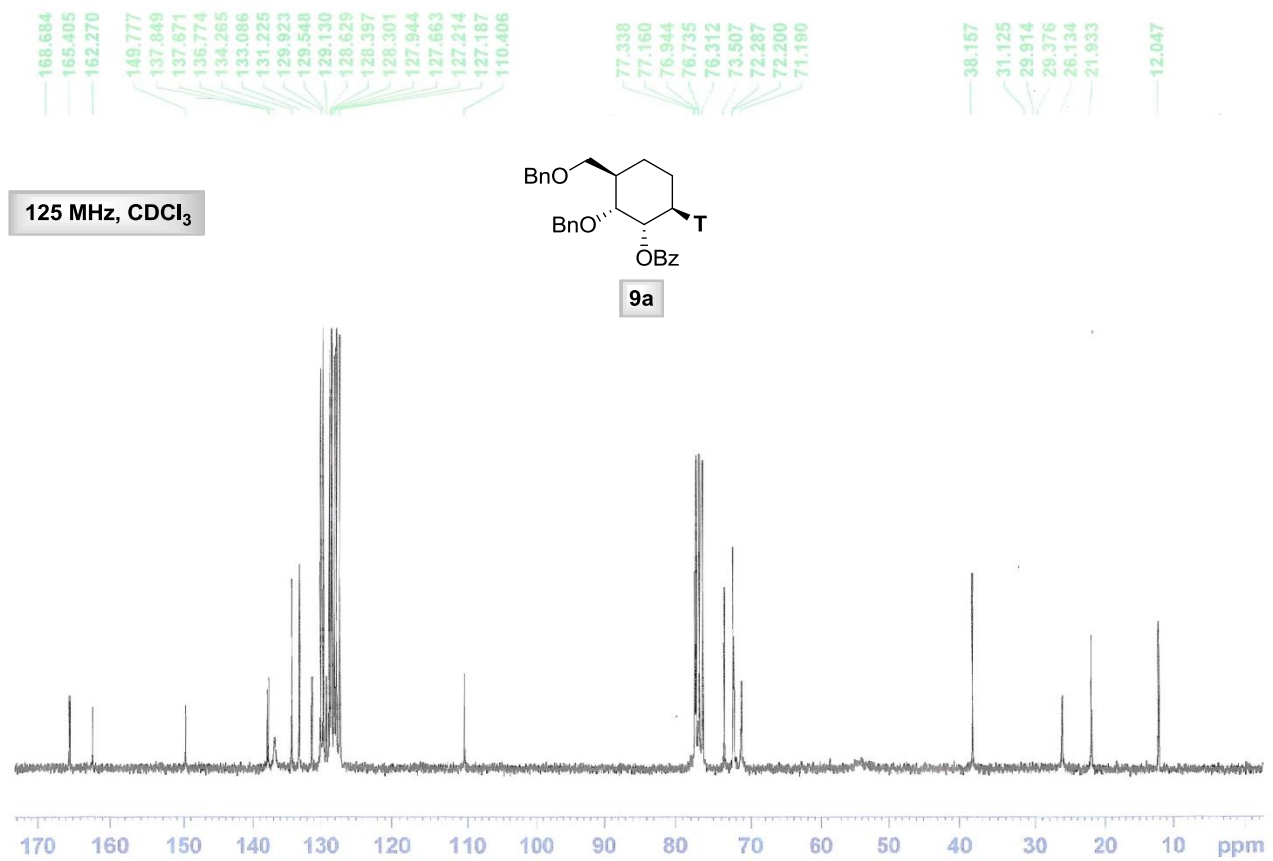
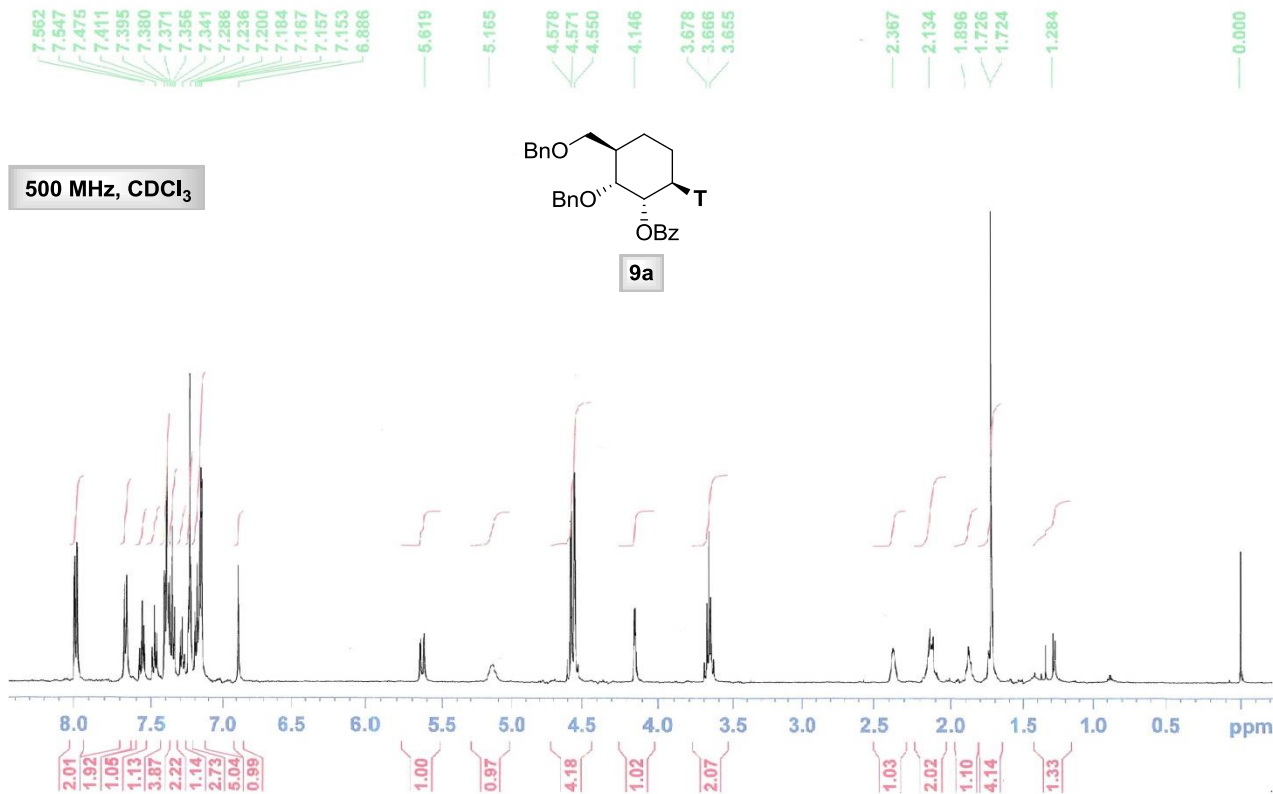


400 MHz, CDCl₃

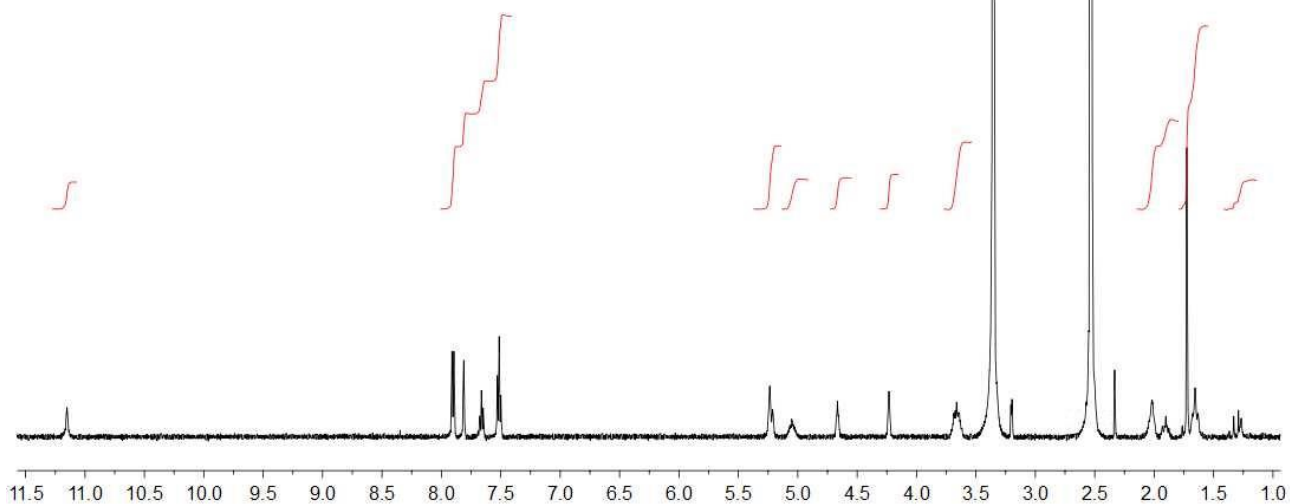
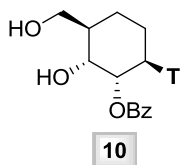


100 MHz, CDCl₃

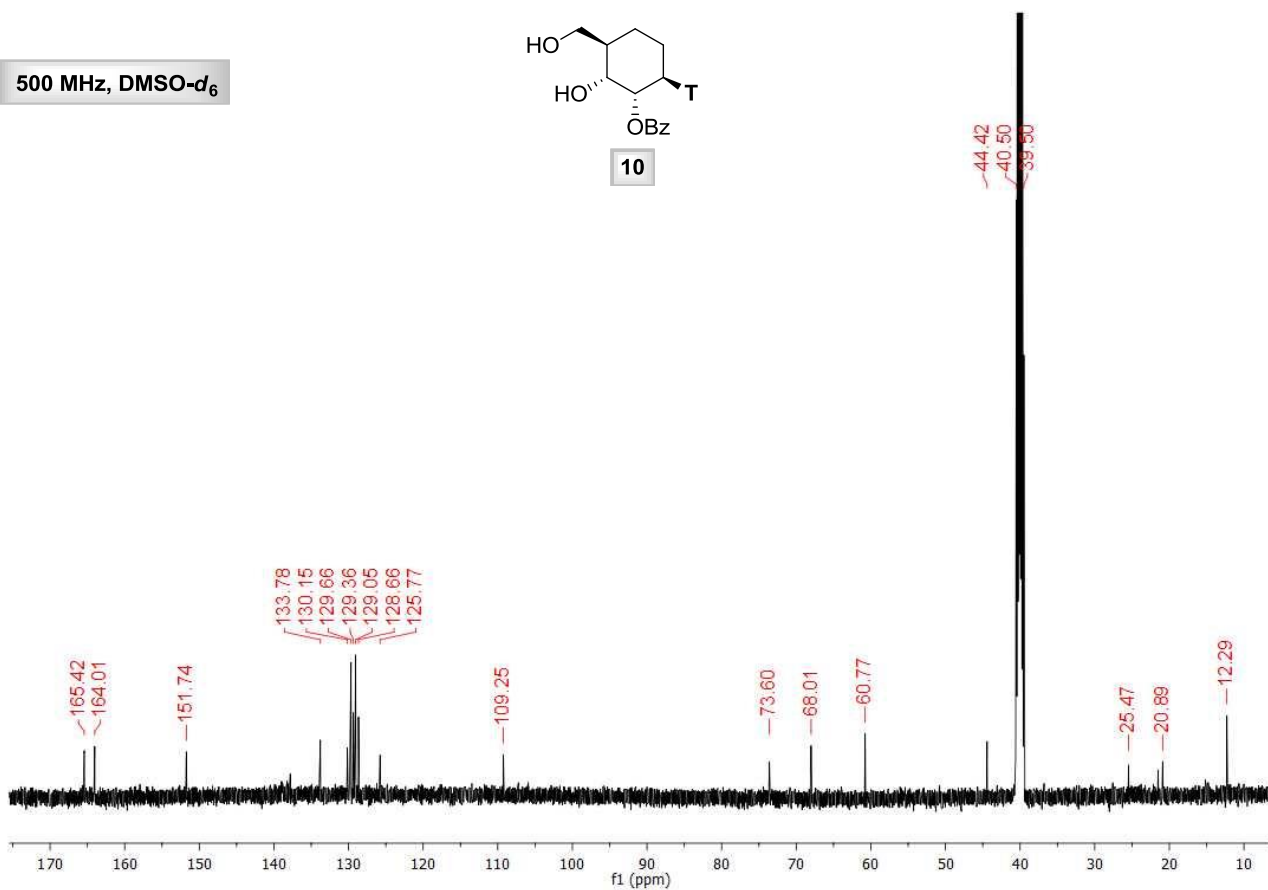
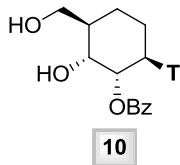


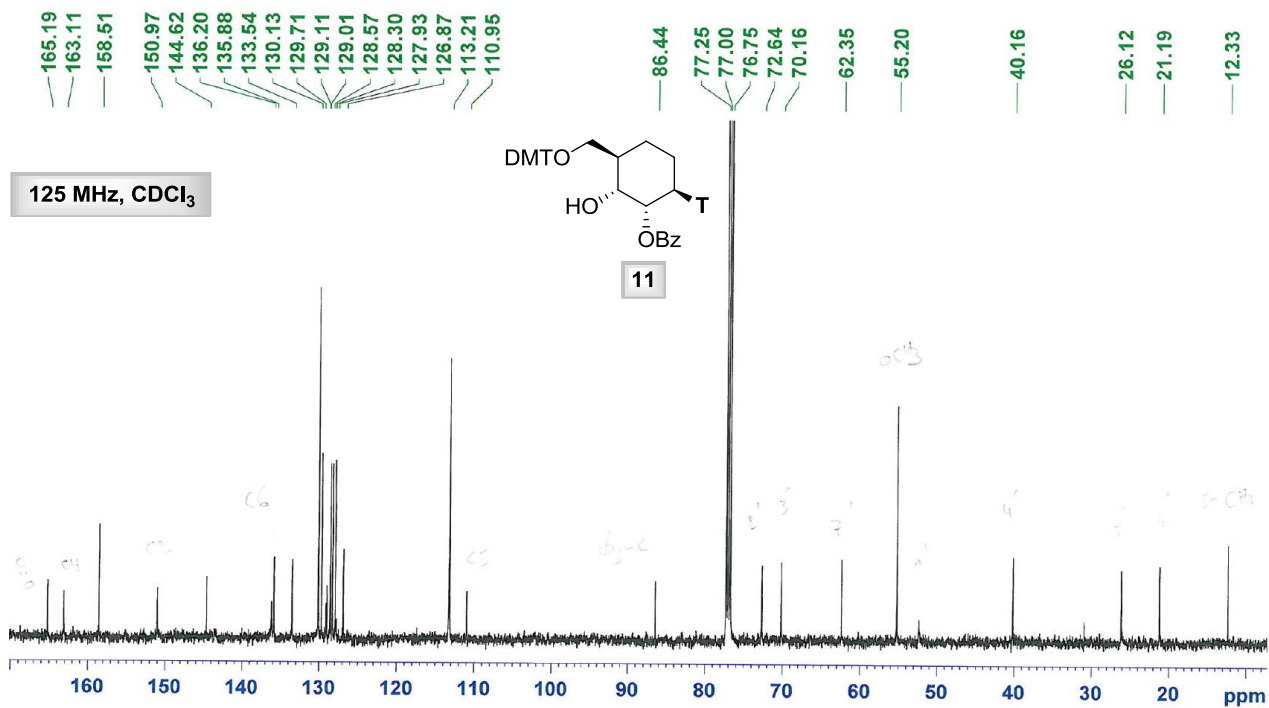
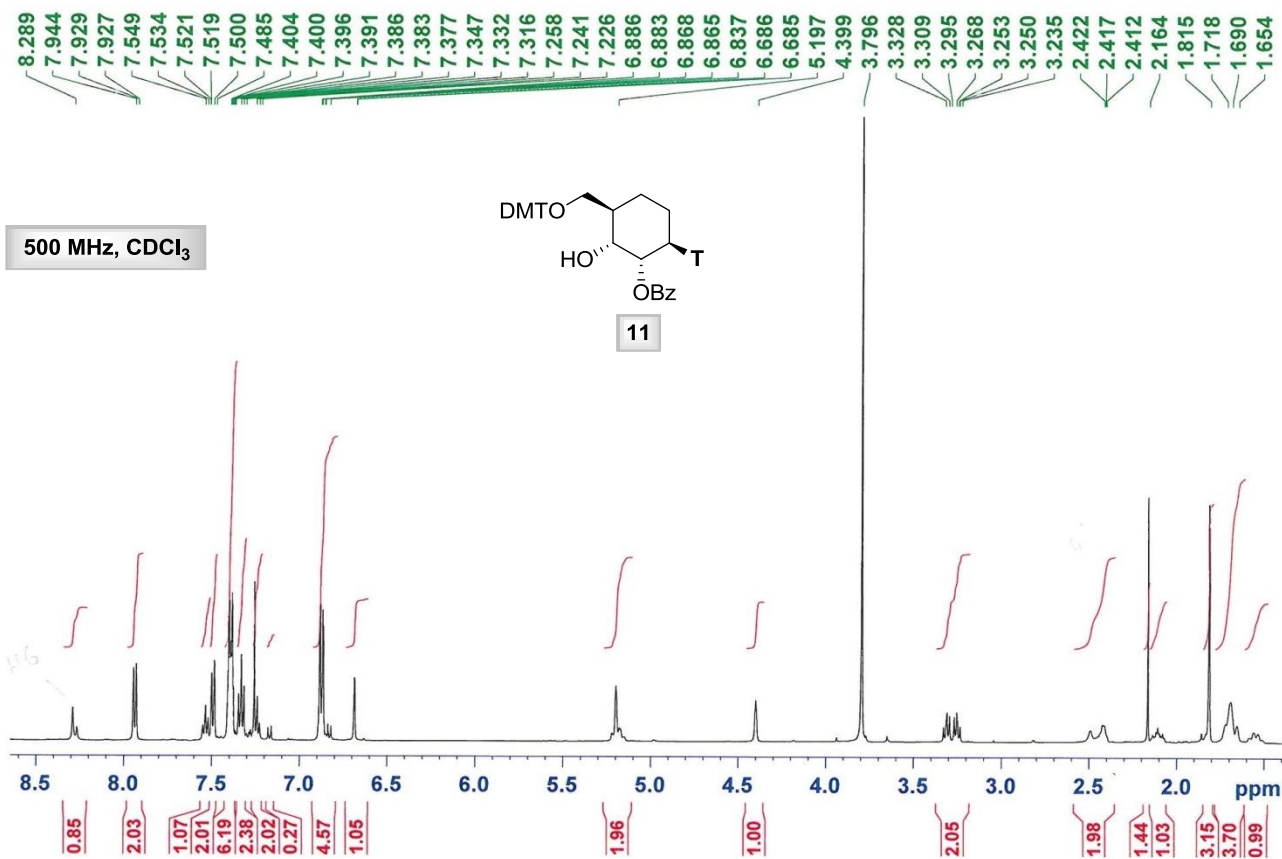


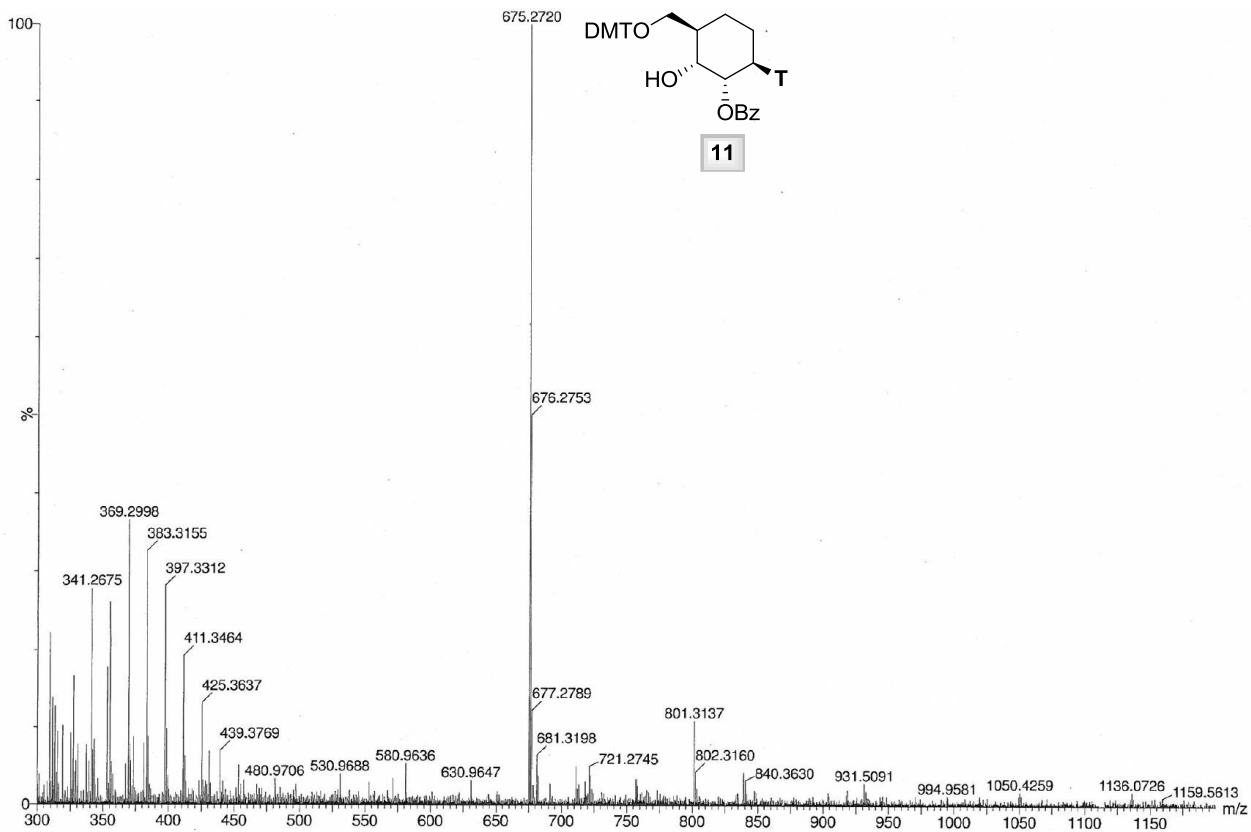
500 MHz, DMSO-d₆

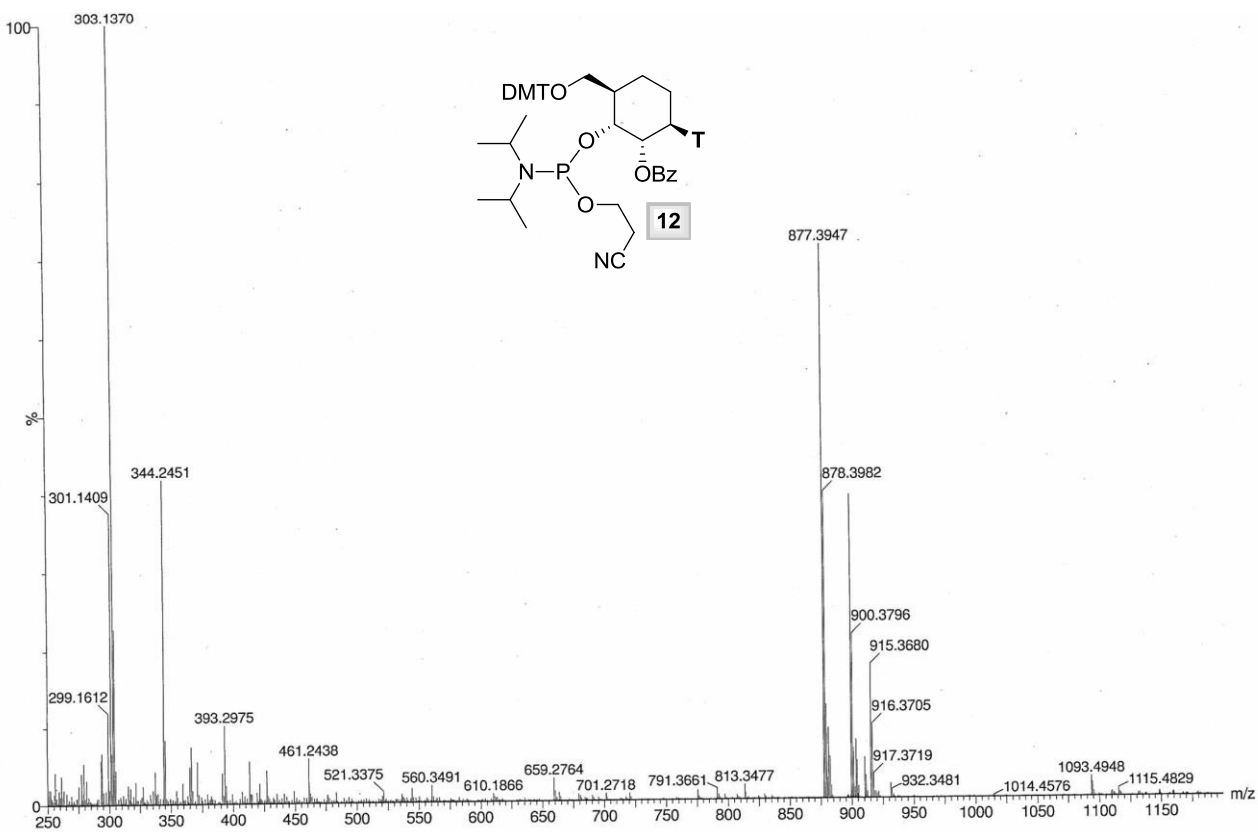
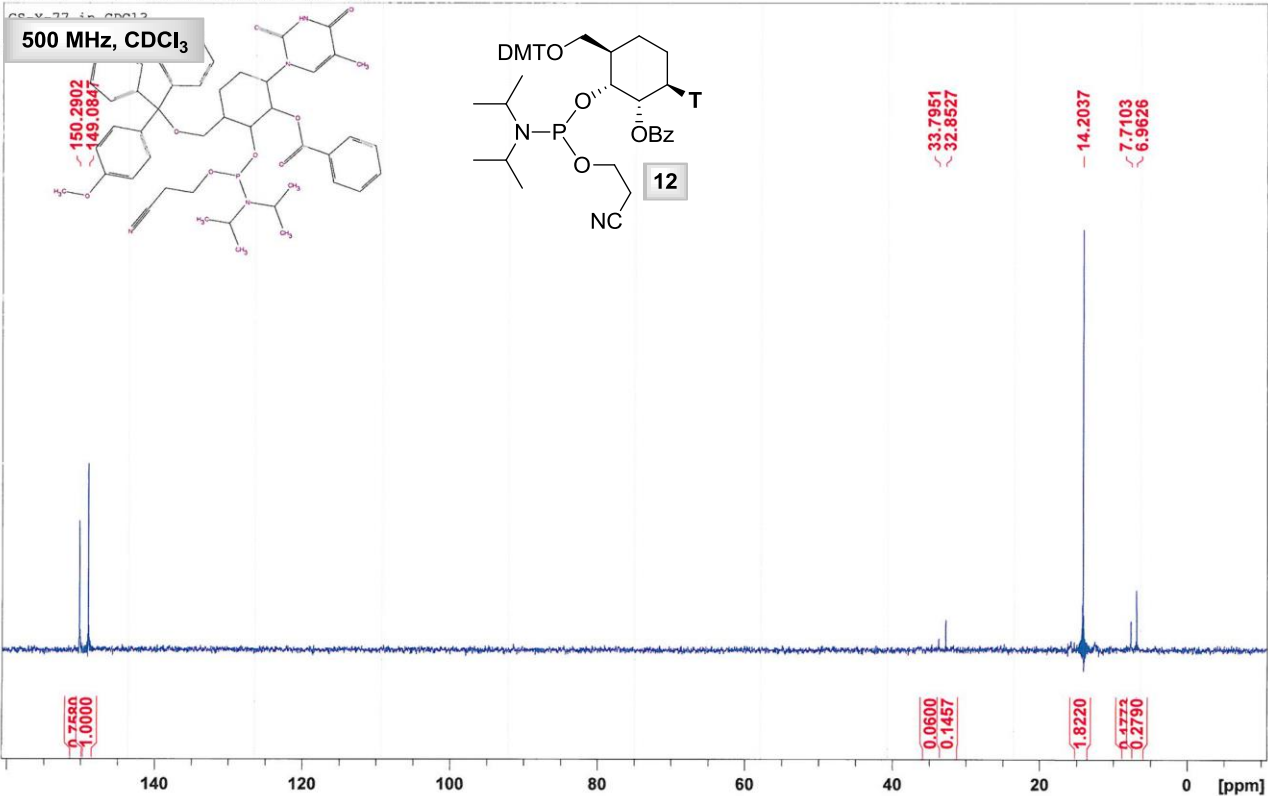


500 MHz, DMSO-d₆

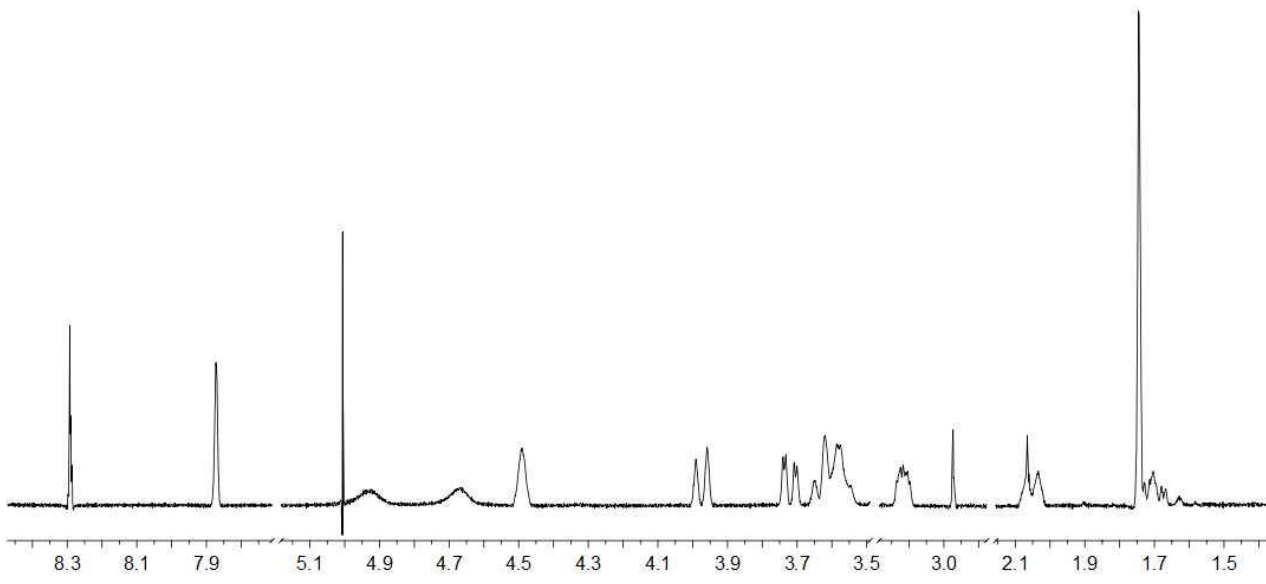
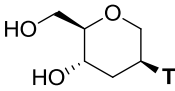




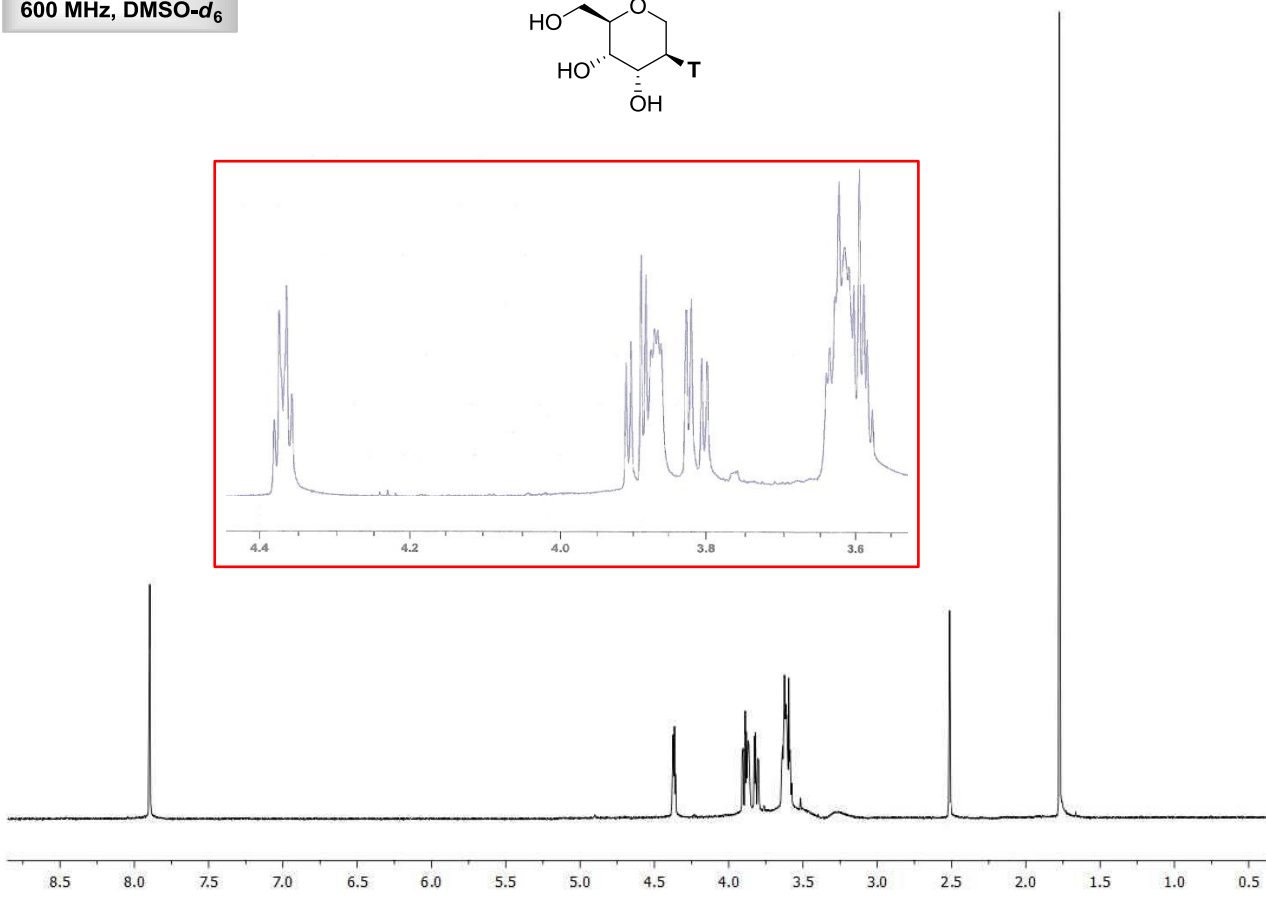
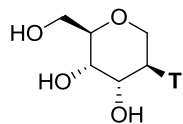




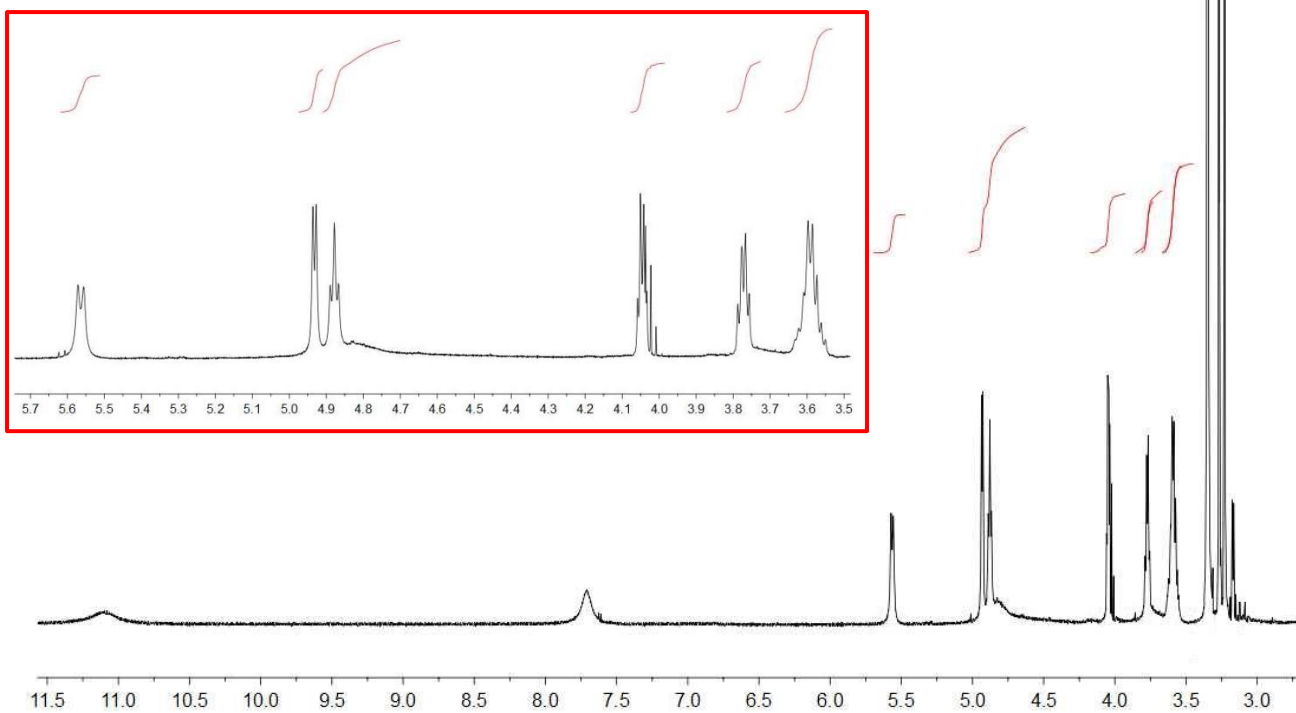
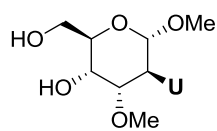
400 MHz, DMSO-*d*₆



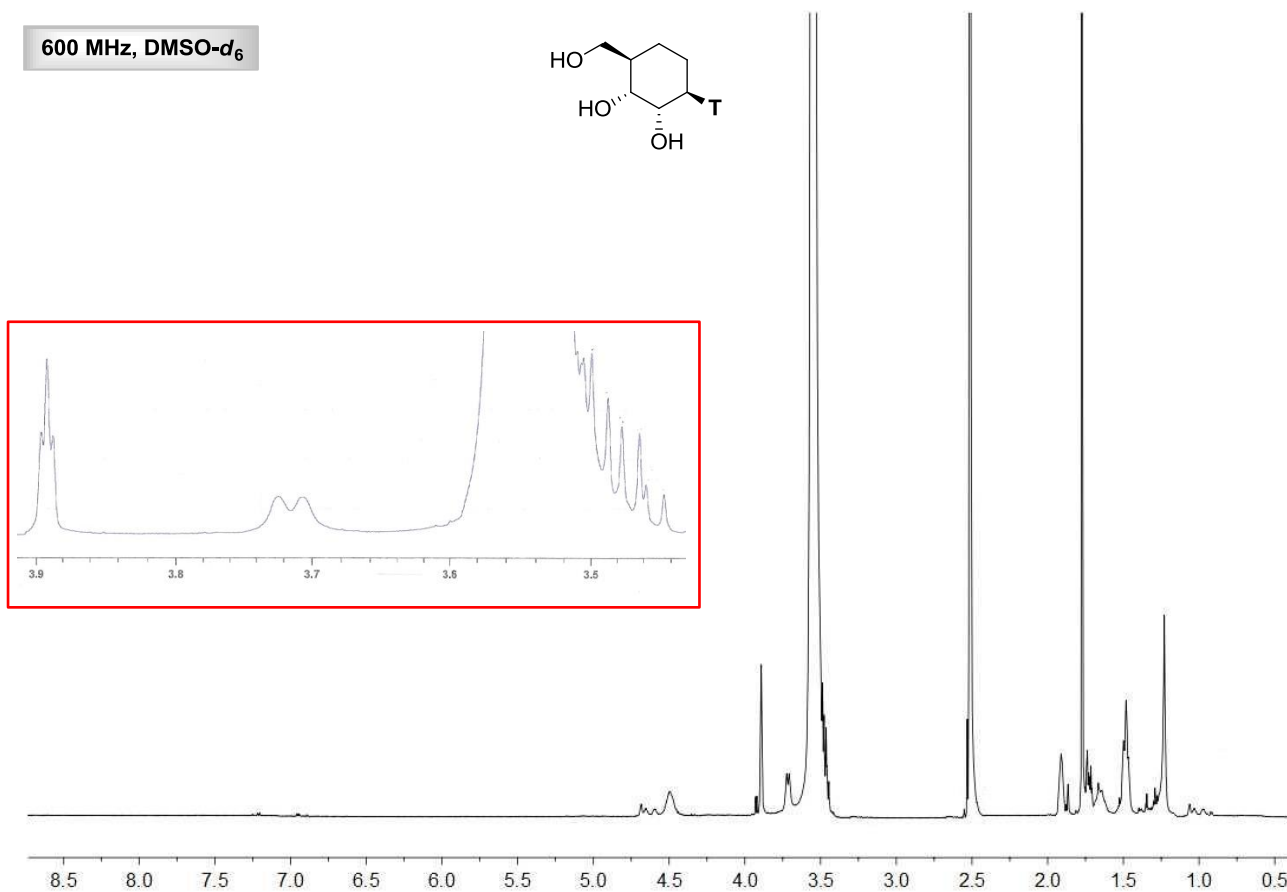
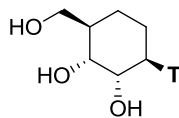
600 MHz, DMSO-*d*₆

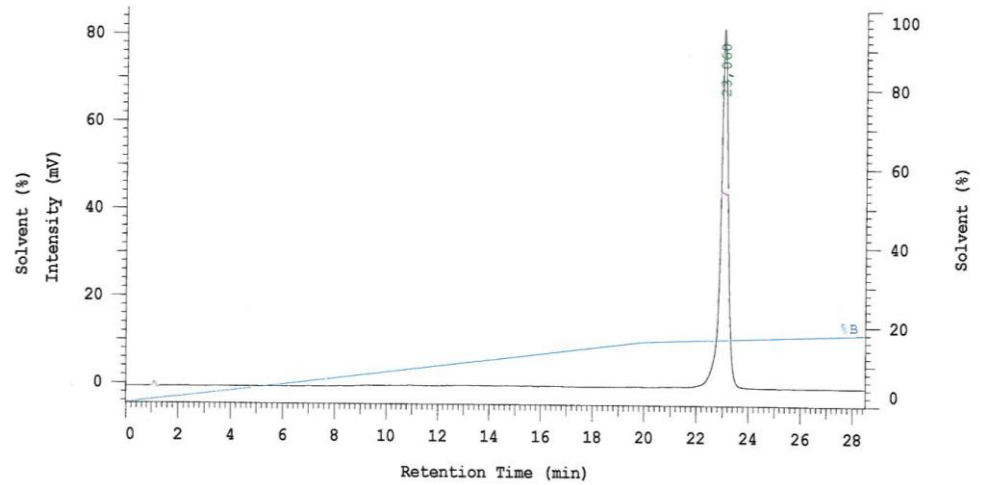
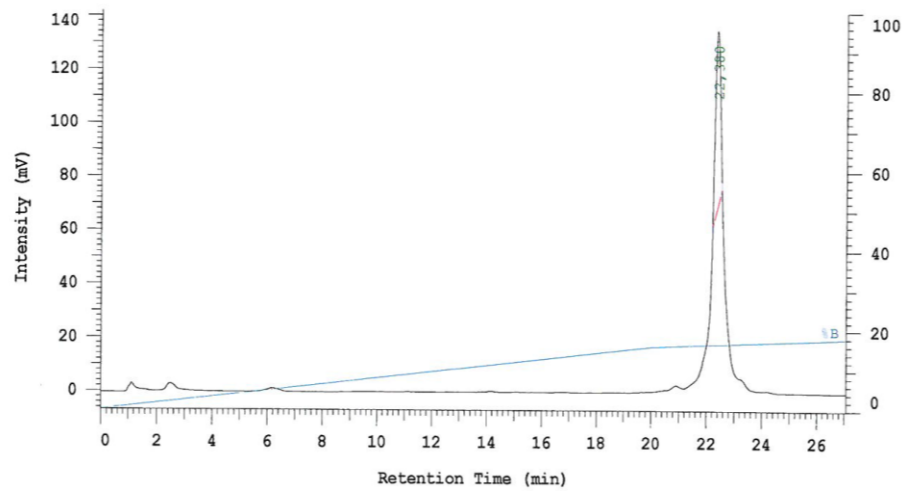


500 MHz, DMSO-*d*₆

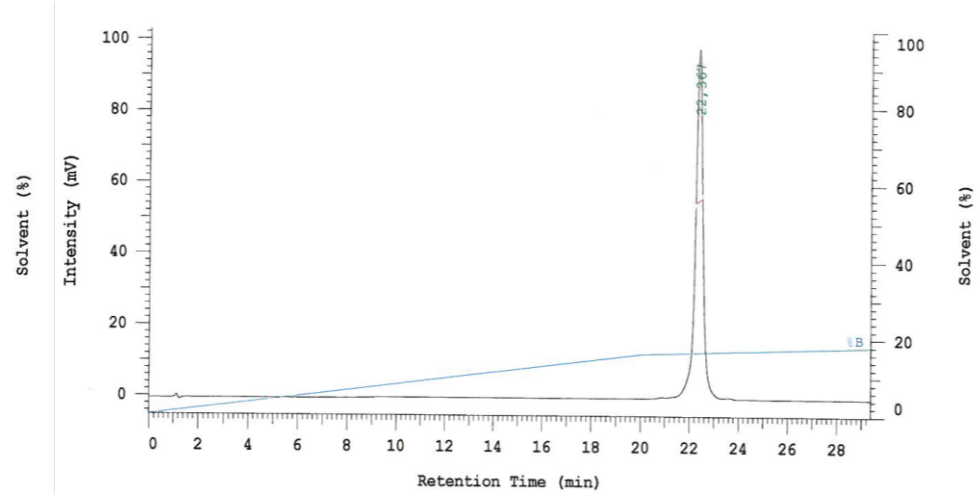
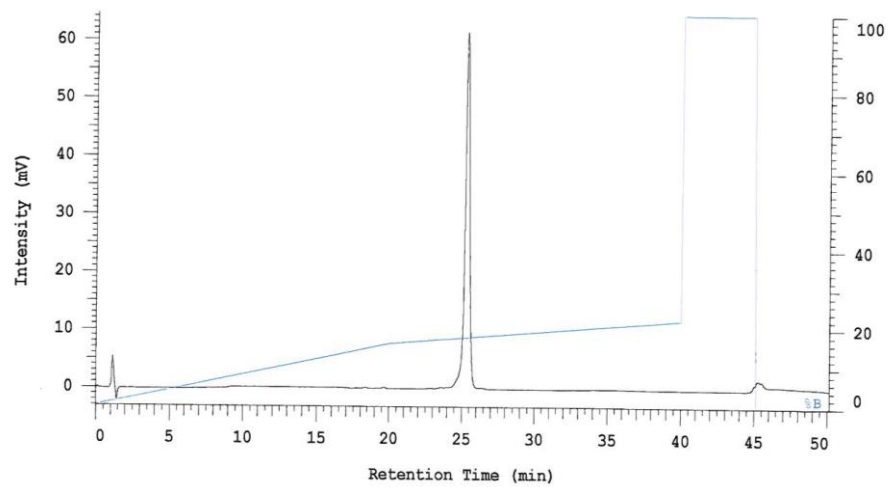


600 MHz, DMSO-*d*₆

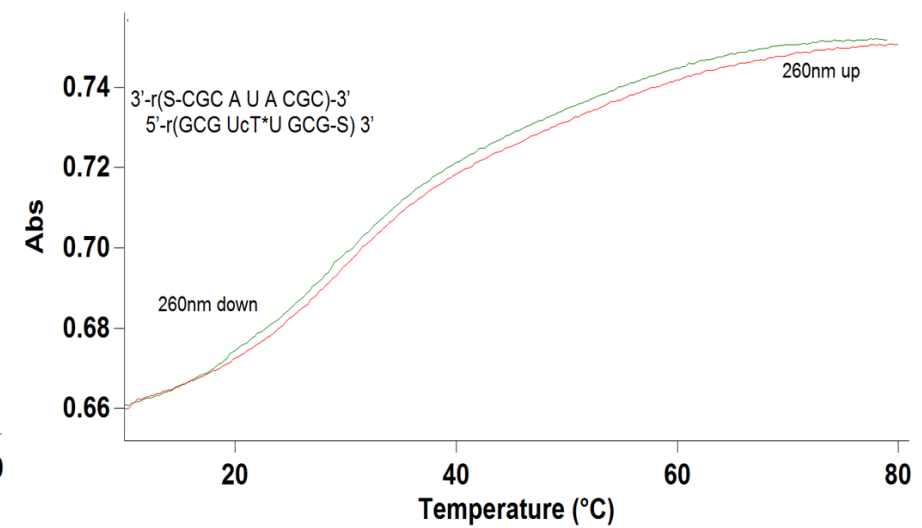
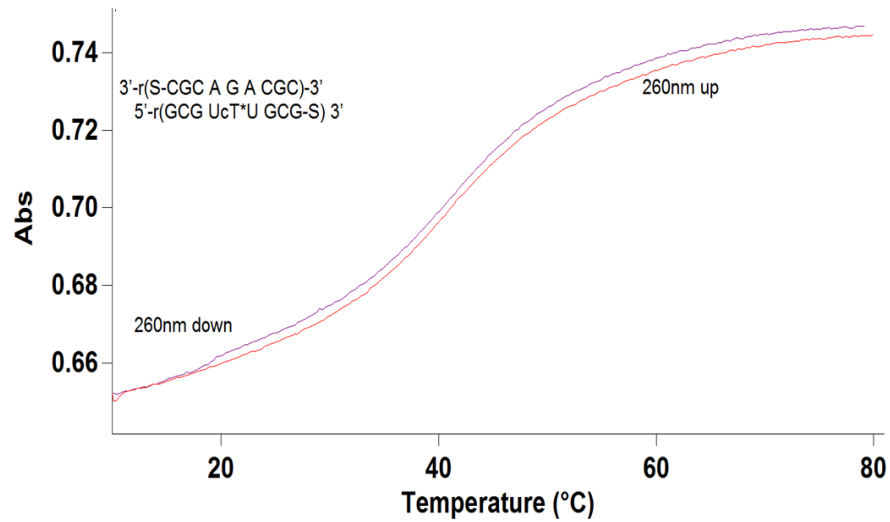
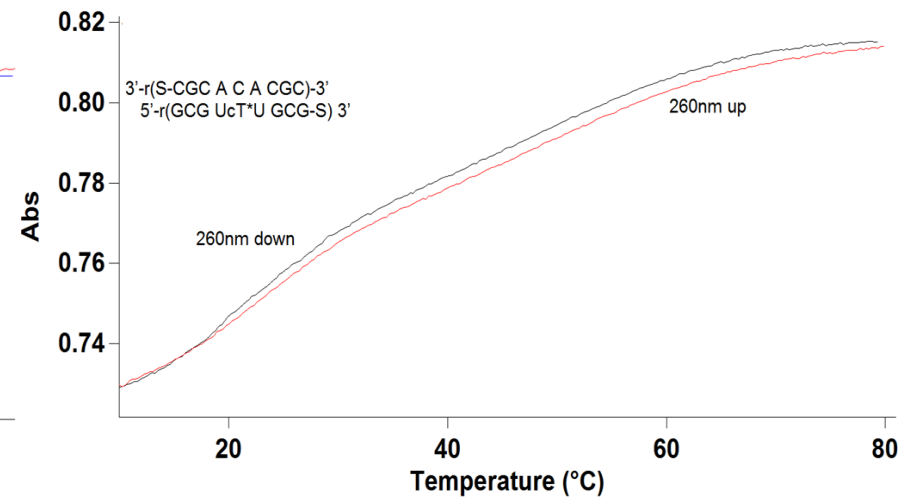
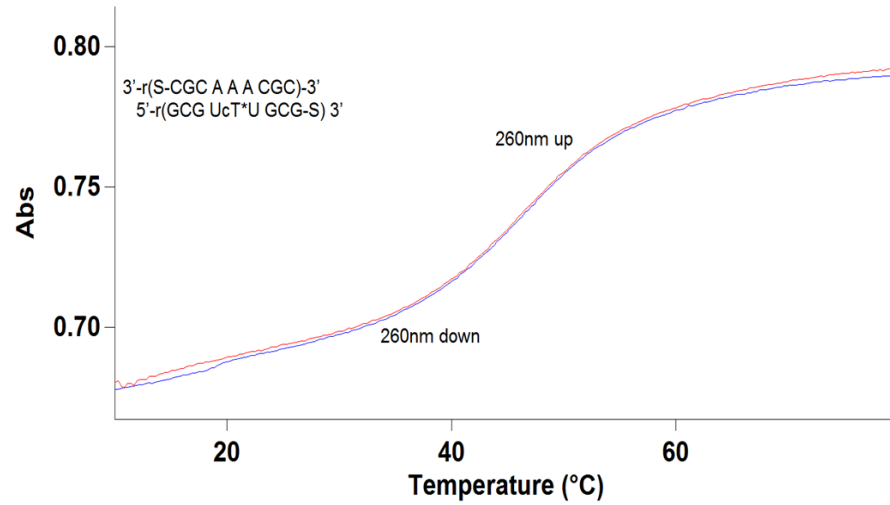




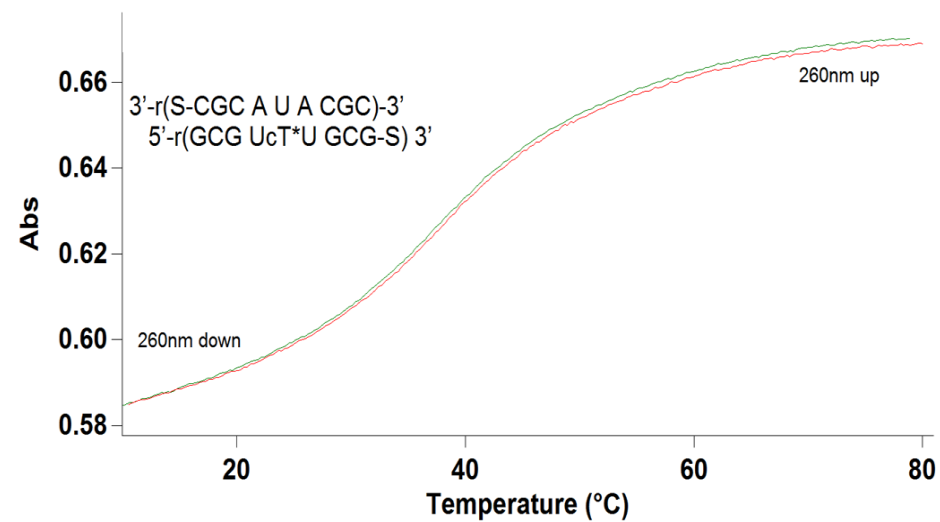
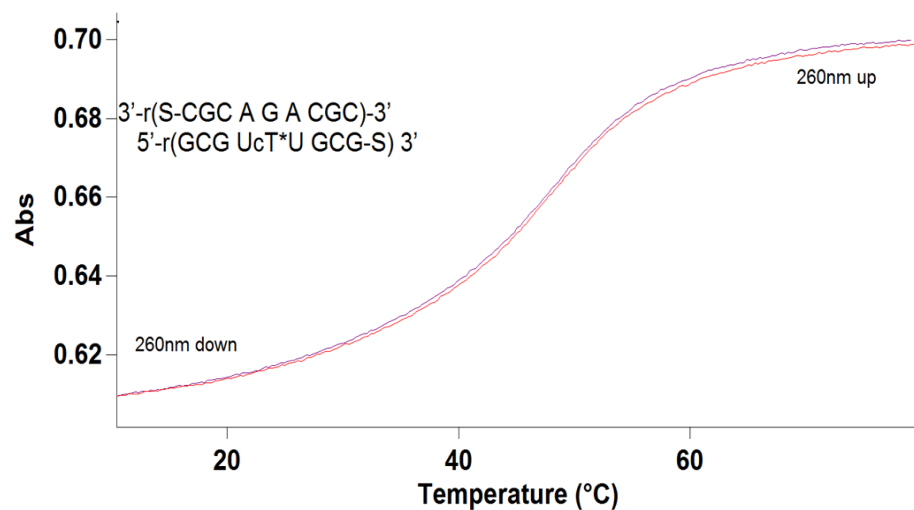
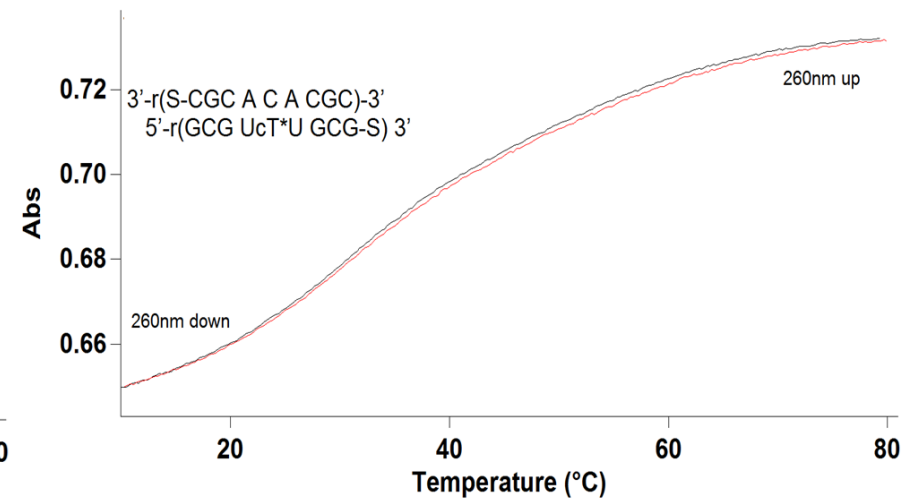
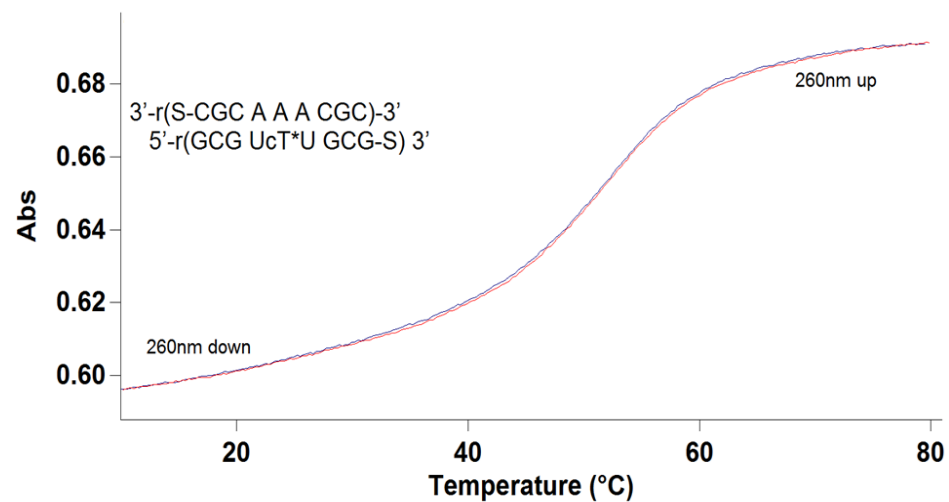
HPLC profiles of the purified oligonucleotide sequences 5'-r(GCGU)-cT*-r(UGCG)-3' and 5'-d(GCGT)-cT*-d(TGCG)-3'.



HPLC profiles of the purified oligonucleotide sequences 5'-d(CACCG)-cT*-d(TGCTACC)-3' and 5'-d(CGCA)-cT*-d(ACGC)-3'.



Melting curves of complementary RNA duplexes [5'-r(GCGUcT*UGCG)/5'-r(CGCA~~Y~~ACGC)] (Y: A, C, G, U). All measures were taken in 0.1 M NaCl, 20 mM KH₂PO₄, 0.1 mM Na₂EDTA, pH 7.5.



Melting curves of complementary RNA duplexes [5'-r(GCGUcT*UGCG)/5'-r(CGCA \mathbf{Y} ACGC)] (\mathbf{Y} : A, C, G, U). All measures were taken in 1 M NaCl, 20 mM KH₂PO₄, 0.1 mM Na₂EDTA, pH 7.5.