

Influence of rare earth doping on the structural and electro-magnetic properties of $\text{SmFeAsO}_{0.7}\text{F}_{0.3}$ iron pnictide

J. B. Anooja^a, P. M. Aswathy^a, Neson Varghese^a, C.K. Chandrakanth^a, N. Devendra Kumar^b, A. Sundaresan^c and U. Syamaprasad^{1,a}

^aNational Institute for Interdisciplinary Science and Technology (CSIR), Trivandrum 695019, India

^bDepartment of Engineering, University of Cambridge, Cambridge CB2 1PZ, UK

^cChemistry and Physics of Materials Unit, Jawaharlal Nehru Centre for Advanced Scientific Research, Bangalore 560064, India,

List of Figures

Figure S1 : XRD patterns of (a) Gd doped and (b) Ce doped samples.

Figure S2 : EDAX spectra of the samples (a) SmGd1 ($\text{Sm}_{0.9}\text{Gd}_{0.1}\text{FeAsO}_{0.7}\text{F}_{0.3}$) and (b) SmCe1 ($\text{Sm}_{0.9}\text{Ce}_{0.1}\text{FeAsO}_{0.7}\text{F}_{0.3}$).

Figure S3 : SEM images of Sm3 ($\text{SmFeAsO}_{0.7}\text{F}_{0.3}$) and selected samples from both Gd^{3+} and Ce^{3+} doped ones.

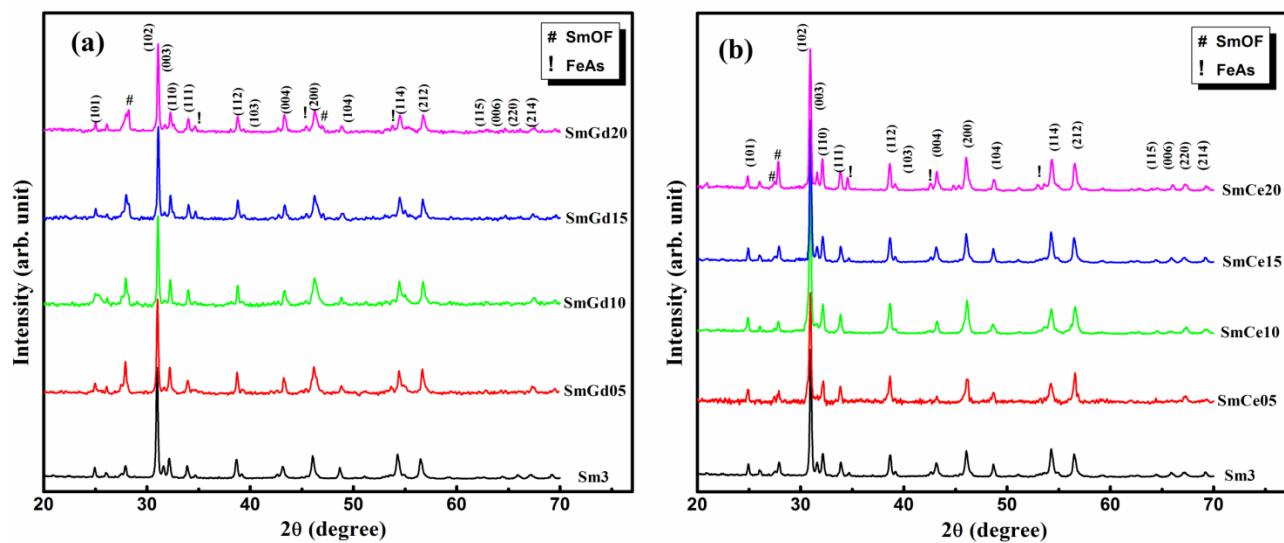


Figure S1: XRD patterns of (a) Gd doped and (b) Ce doped samples.

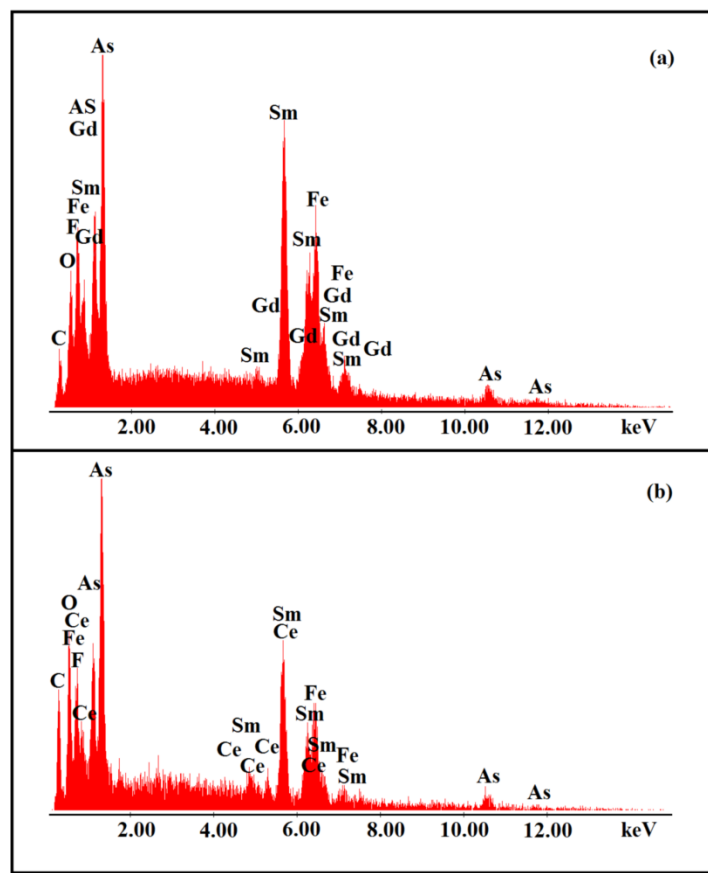


Figure S2: EDAX spectra of the samples (a) SmGd1 ($\text{Sm}_{0.9}\text{Gd}_{0.1}\text{FeAsO}_{0.7}\text{F}_{0.3}$) and (b) SmCe1 ($\text{Sm}_{0.9}\text{Ce}_{0.1}\text{FeAsO}_{0.7}\text{F}_{0.3}$).

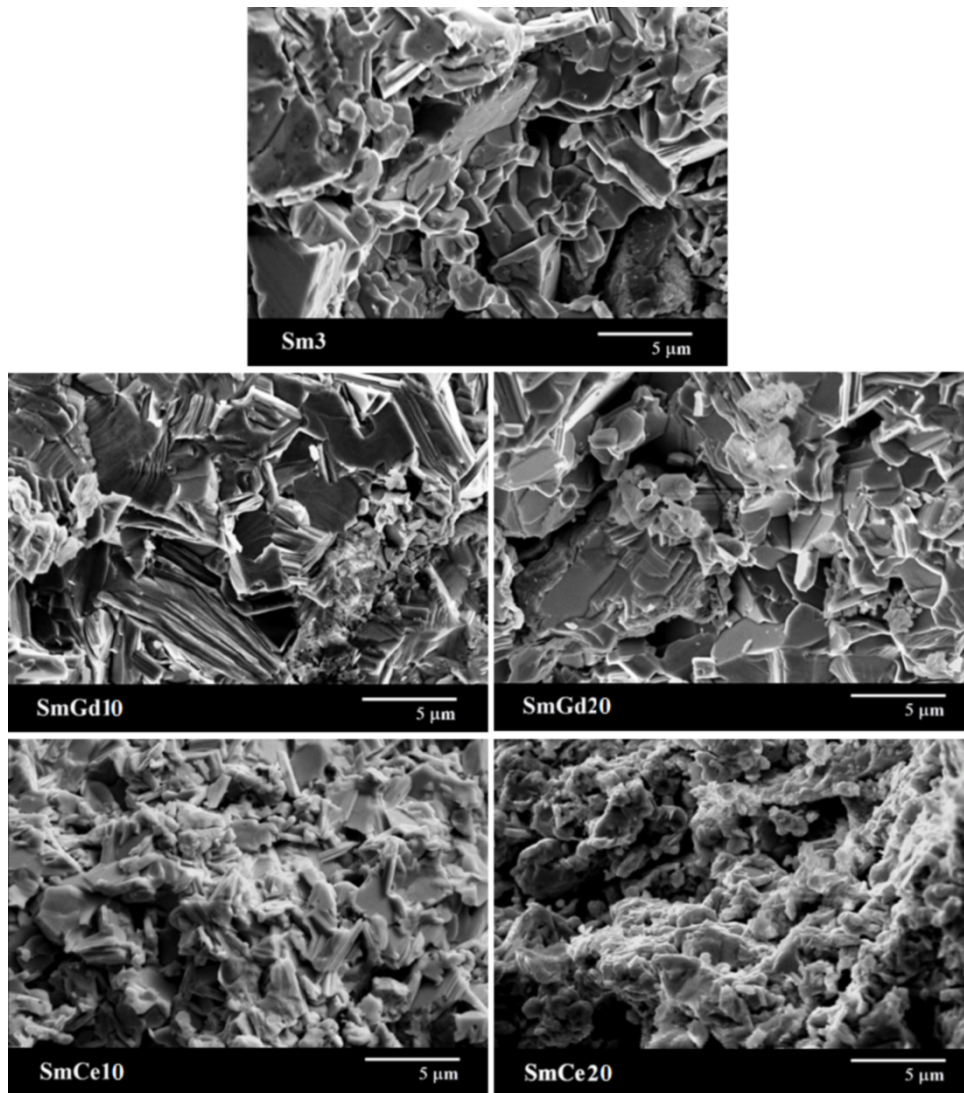


Figure S3: SEM images of Sm3 ($\text{SmFeAsO}_{0.7}\text{F}_{0.3}$) and selected samples from both Gd^{3+} and Ce^{3+} doped ones.