

Supplementary Information

Photo-crosslinked hierarchically honeycomb-patterned/macroporous scaffolds of calcium phosphate cement promote MC3T3-E1 cell functions

X. H. Wu,^a Z. Y. Wu^b, J. Qian^{b*}, Y.G. Yan^c, J. Wei^b, H. Li^c, J. C. Su^{d*}

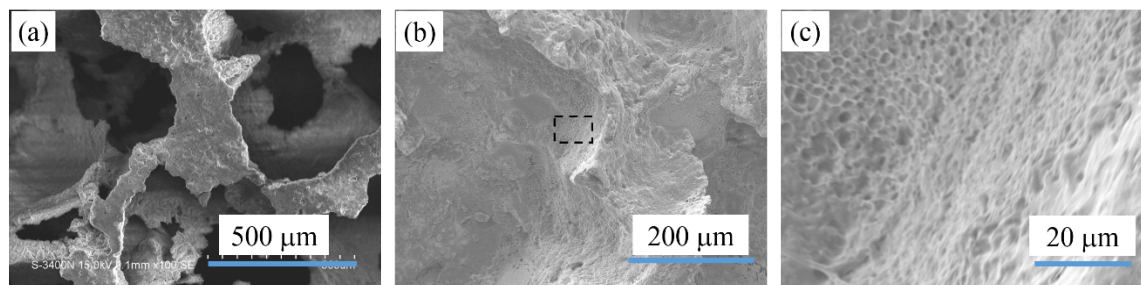


Figure S1. (a) Representative SEM image of scaffolds demonstrating the interconnected pores. (b) The SEM image showing the inside view of CH-CPC scaffolds. The sample was prepared by cracking the scaffold in liquid nitrogen. (c) The SEM image at high magnification corresponding to the rectangular area in (b).

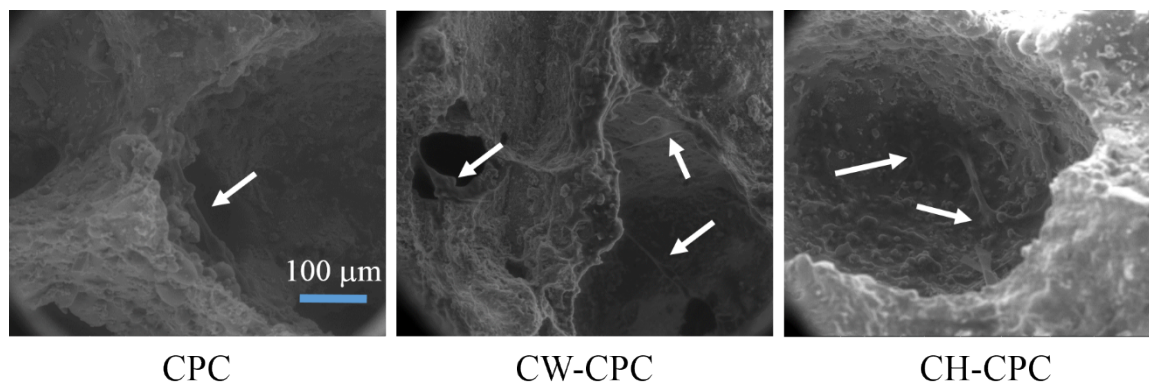


Figure S2. Cell adhesion on the CPC, CW-CPC, and CH-CPC scaffolds at day 1. Scale bar of 100 μm is applicable to all. The white arrows indicate the cells inside the macropores.

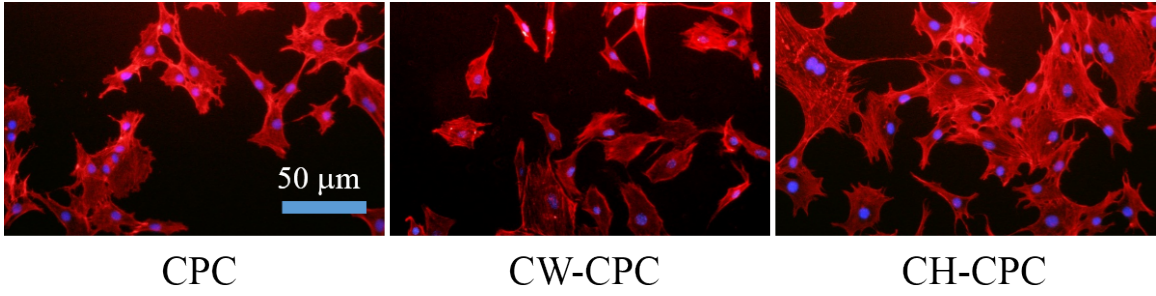


Figure S3. Representative fluorescent images of cells stained with RP (red) and DAPI (blue) at day 1 on CPC, CW-CPC, and CH-CPC scaffolds for measuring the cell spreading area. Scale bar of 50 μm is applicable to all.