

Electronic supplementary information

**Xylene gas sensor based on Ni doped TiO₂ bowl-like
submicron particles with enhanced sensing performance**

Linghui Zhu,^a Dezhong Zhang,^b Ying Wang,^b Caihui Feng,^c Jingran Zhou,^b Caixia Liu,^{a,*}
Shengping Ruan^{b,*}

^a State Key Laboratory on Integrated Optoelectronics, Jilin University, Changchun 130012, P. R. China

^b College of Electronic Science and Engineering, Jilin University, Changchun 130012, P. R. China

^c College of Instrumentation and Electrical Engineering, Jilin University, Changchun 130012, P. R. China.

*Electronic-mail: liucx@jlu.edu.cn

ruansp@jlu.edu.cn

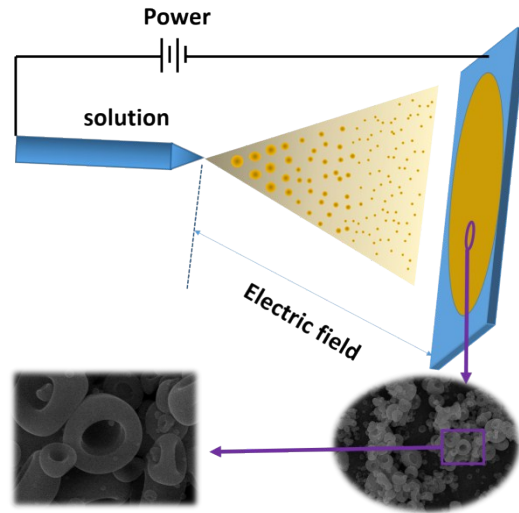


Fig. S1 Schematic diagram of electrospay process.

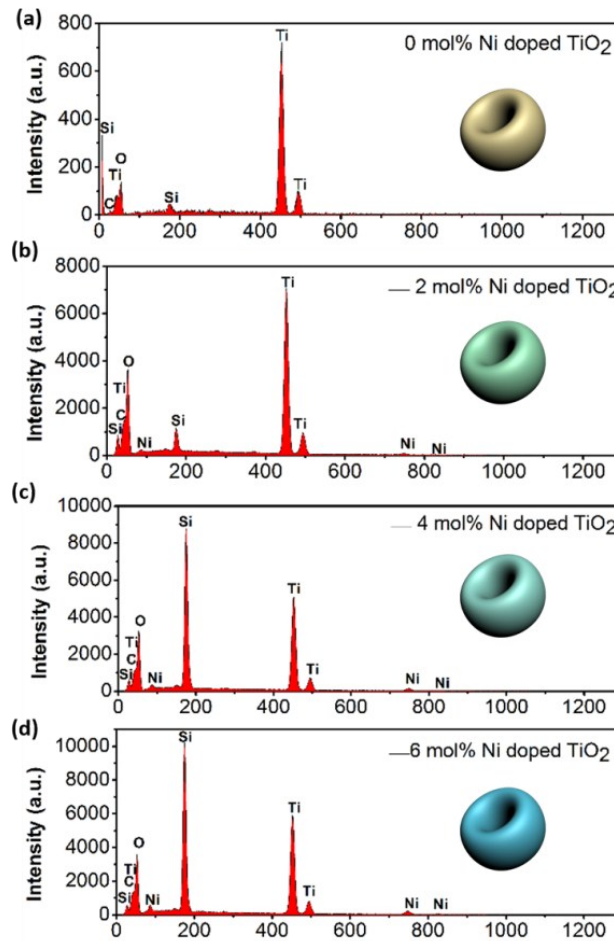


Fig. S2 EDX patterns of (a) 0 mol% (b) 2 mol % (c) 4 mol% (d) 6 mol% Ni doped TiO_2 submicron particles.