

Supplementary information

Synthesis and characterization of RGO/zeolite composites for removal of arsenic
from contaminated water

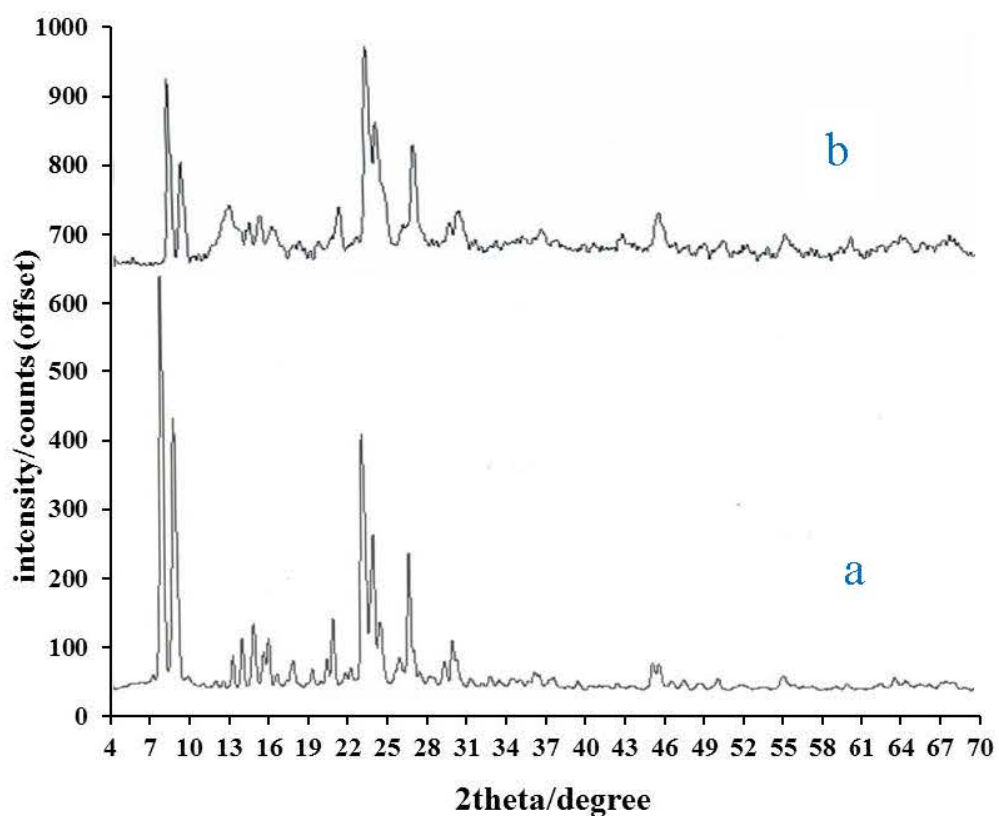


Figure. 1s. XRD pattern of Cu-Clin (a), RGO/Cu-Clin (b).

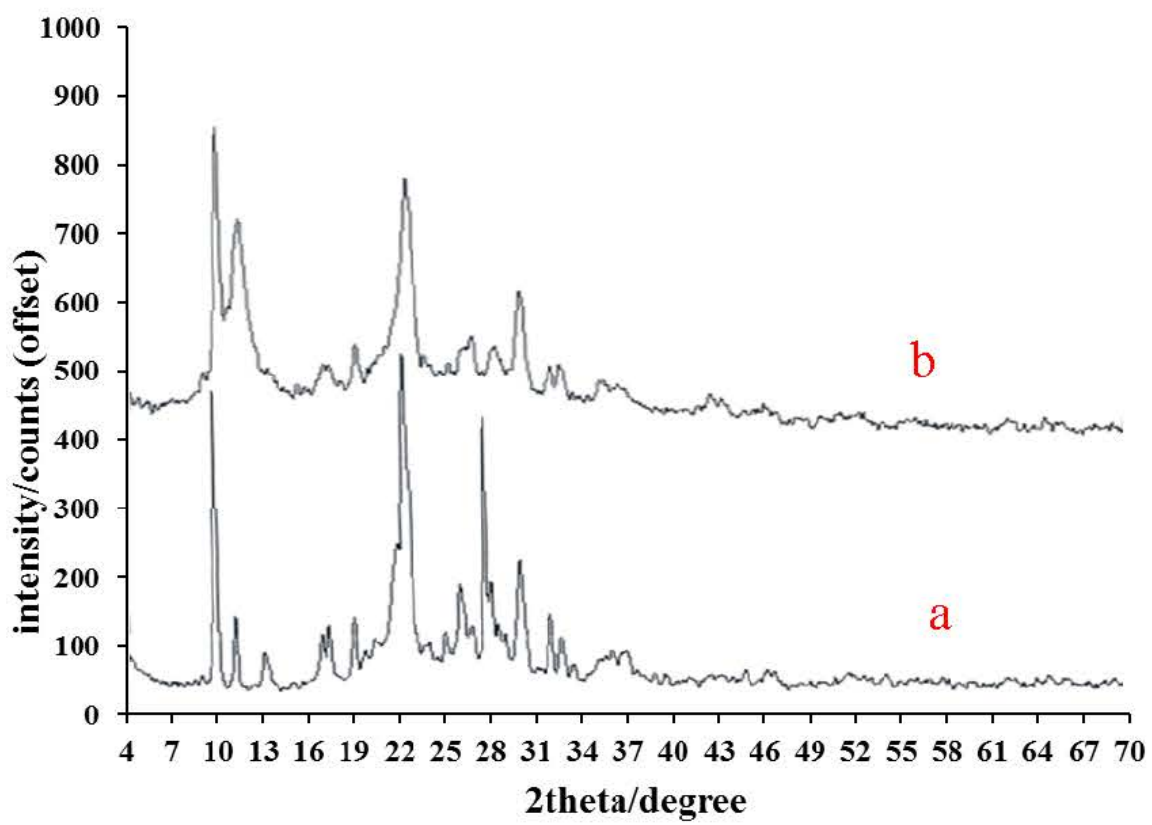


Figure. 2s. XRD pattern of Cu-ZSM-5 (a), RGO/Cu-ZSM-5 (b).