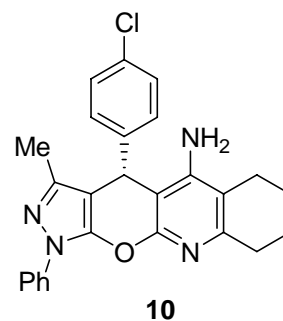
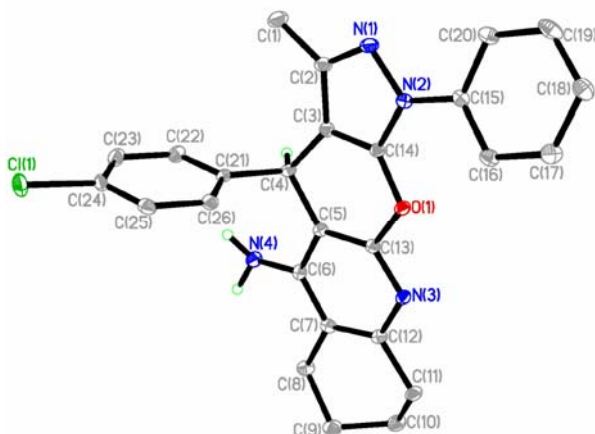


Table of Contents

- | | |
|---|-------------------|
| 1. Crystallography data of Compound 10 | Page 1 – Page 2 |
| 2. Copies of ¹ H and ¹³ C NMR Spectra | Page 2 – Page 19 |
| 3. Copies of HRMS spectra | Page 19 – Page 28 |
| 4. Copies of HPLC data | Page 29 – Page 46 |

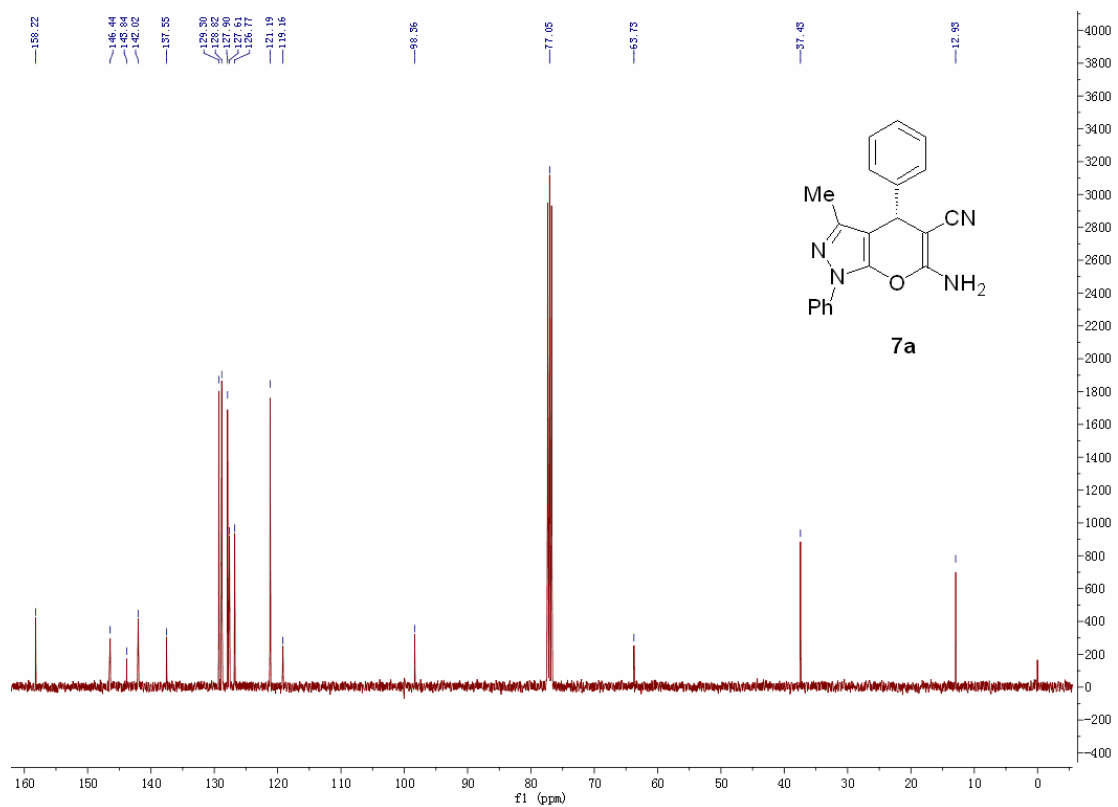
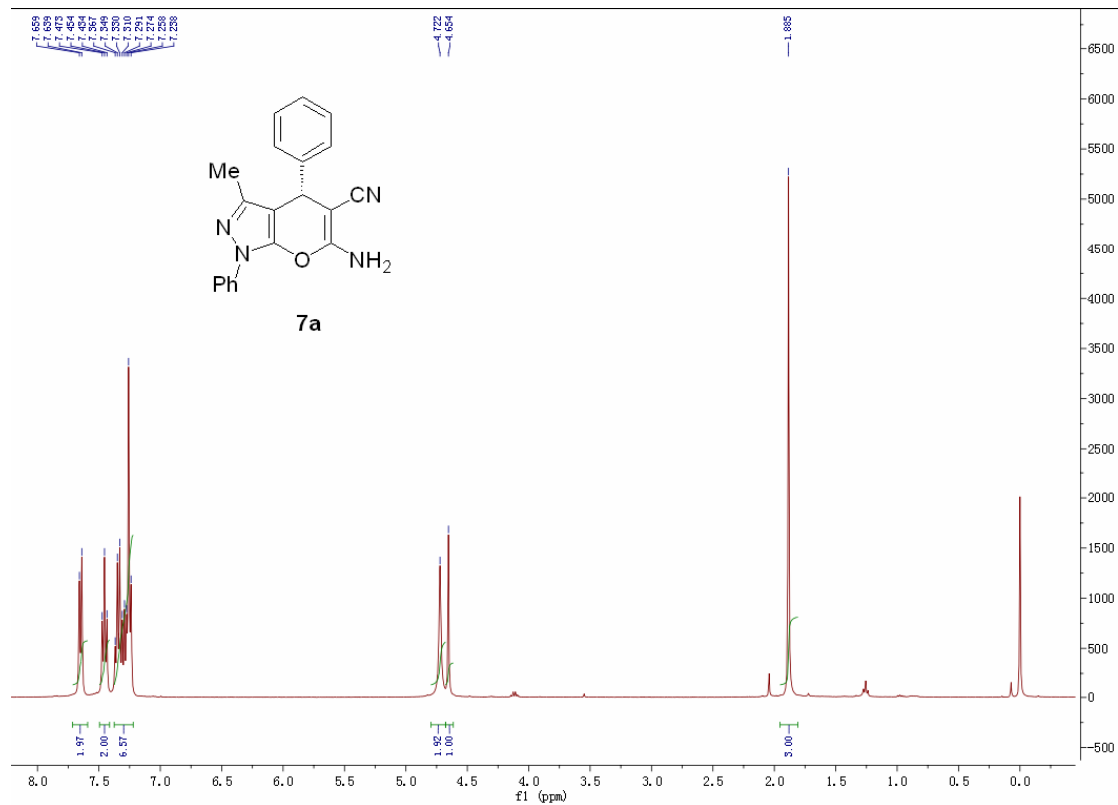
1. Crystallography data of Compound **10**

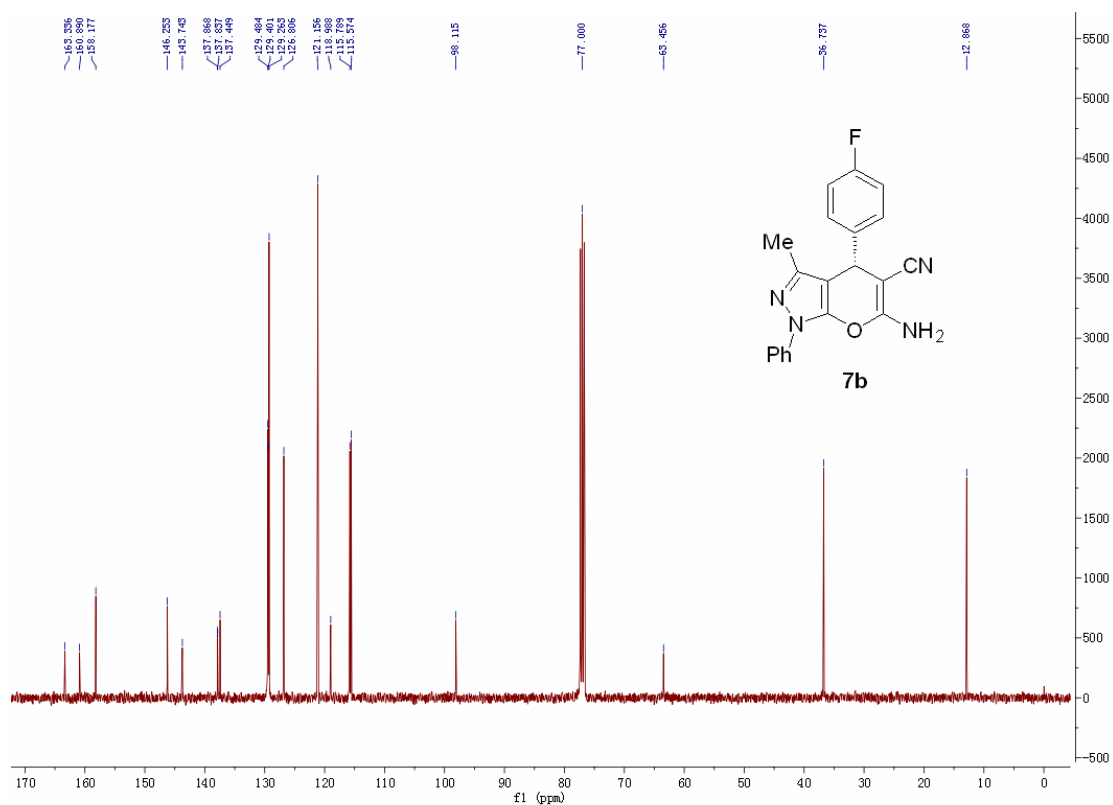
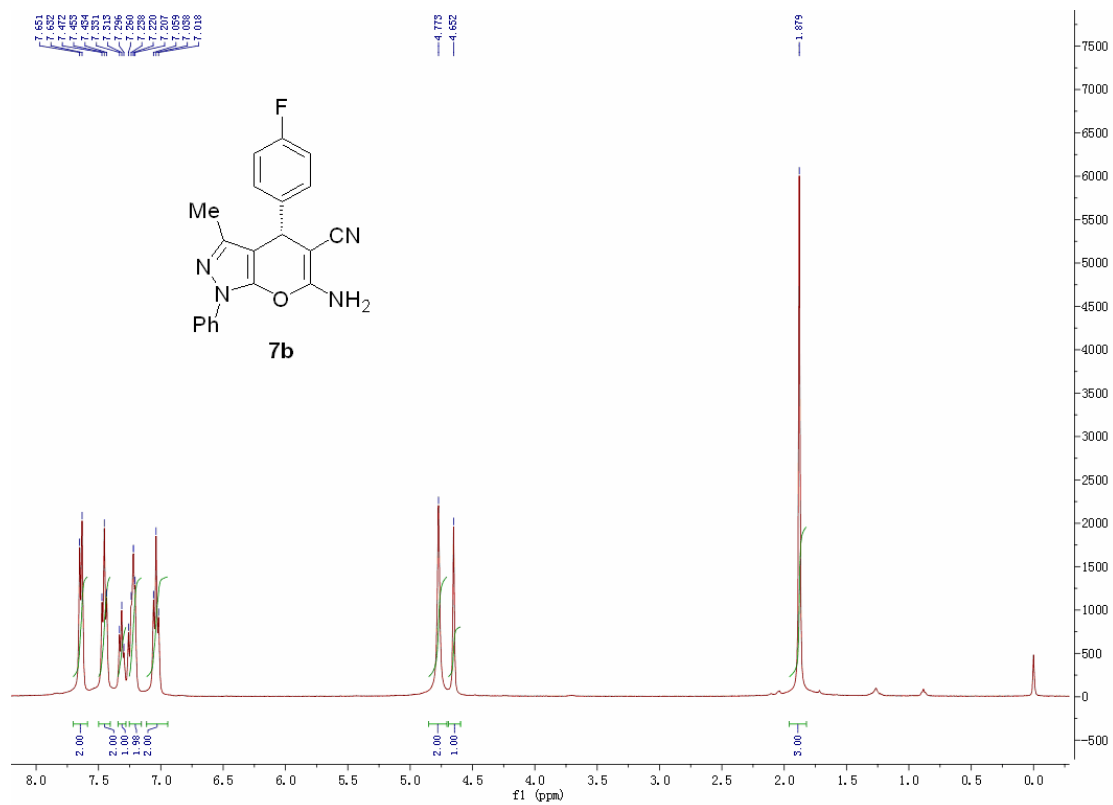


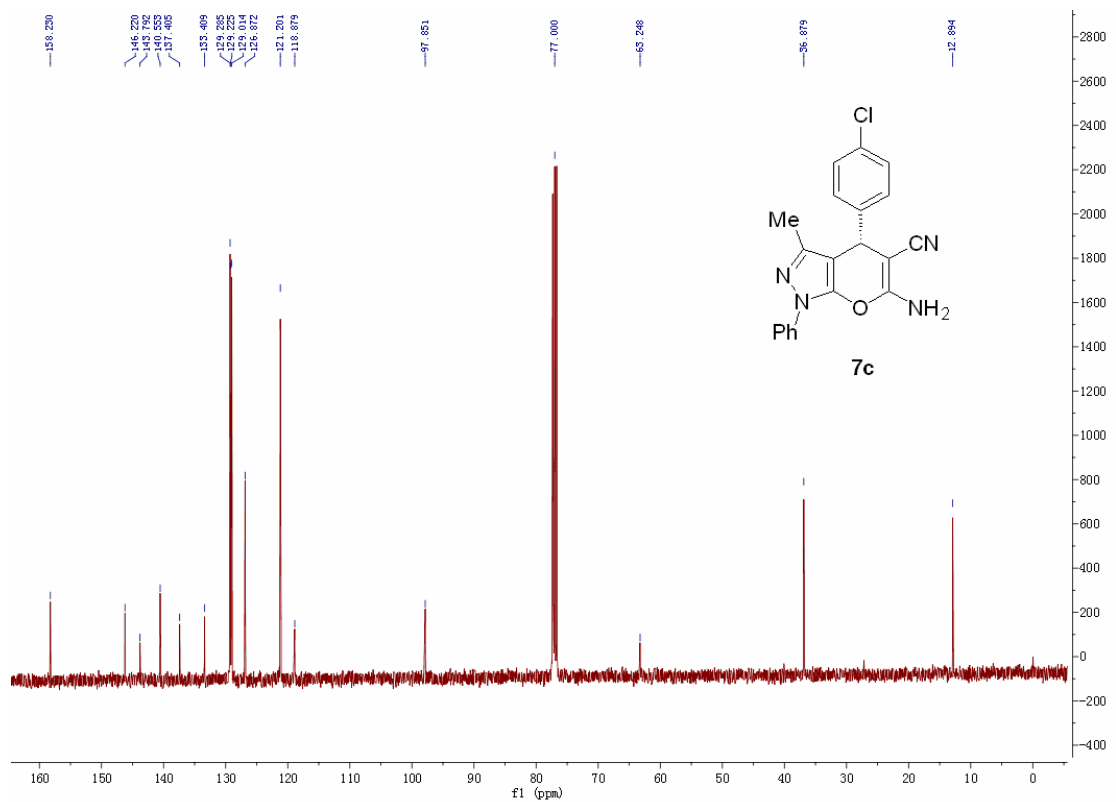
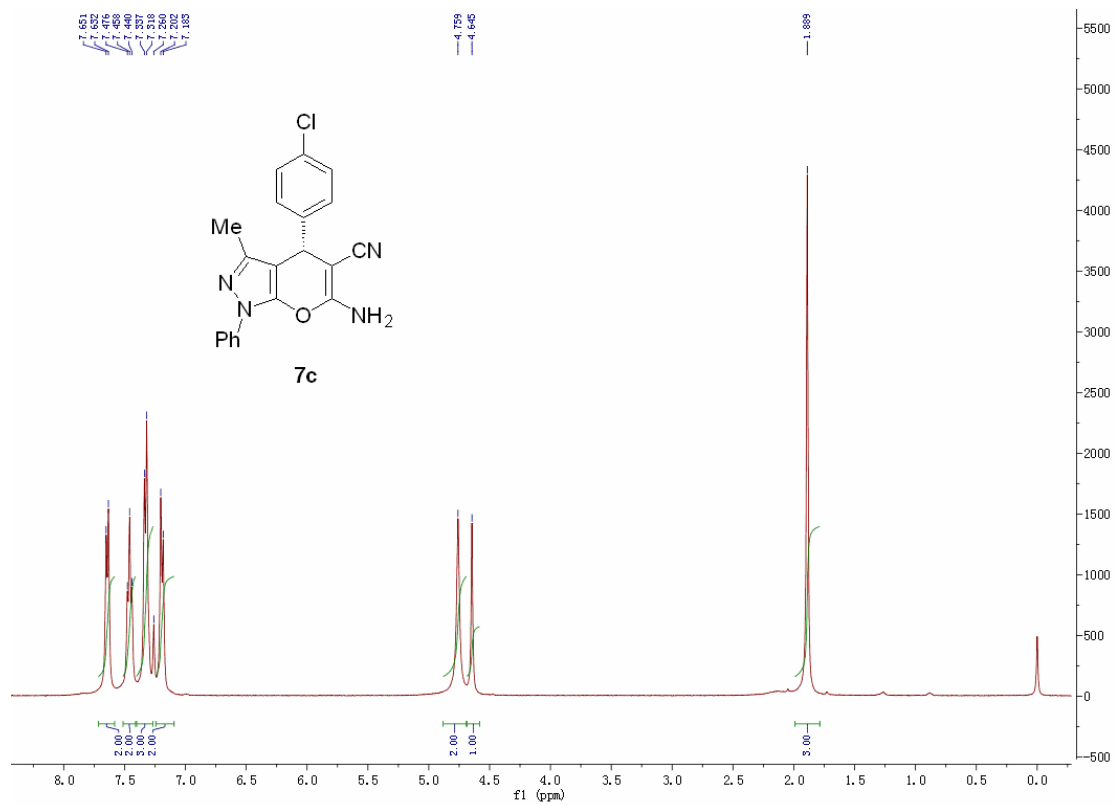
Identification code	shelxl
Empirical formula	C ₂₆ H ₂₃ Cl N ₄ O
Formula weight	442.93
Temperature	113(2) K
Wavelength	0.71073 Å
Crystal system, space group	Monoclinic, P2(1)
Unit cell dimensions	a = 8.1418(16) Å alpha = 90 deg. b = 12.894(3) Å beta = 105.75(3) deg. c = 10.541(2) Å gamma = 90 deg.
Volume	1065.1(4) Å ³
Z, Calculated density	2, 1.381 Mg/m ³
Absorption coefficient	0.207 mm ⁻¹
F(000)	464
Crystal size	0.20 x 0.18 x 0.12 mm
Theta range for data collection	2.01 to 28.10 deg.
Limiting indices	-9 ≤ h ≤ 10, -16 ≤ k ≤ 16, -13 ≤ l ≤ 13
Reflections collected / unique	10819 / 4910 [R(int) = 0.0301]
Completeness to theta = 28.10	99.1 %
Absorption correction	Semi-empirical from equivalents
Max. and min. transmission	0.9756 and 0.9598
Refinement method	Full-matrix least-squares on F ²
Data / restraints / parameters	4910 / 4 / 296
Goodness-of-fit on F ²	1.043
Final R indices [I > 2σ(I)]	R1 = 0.0312, wR2 = 0.0797

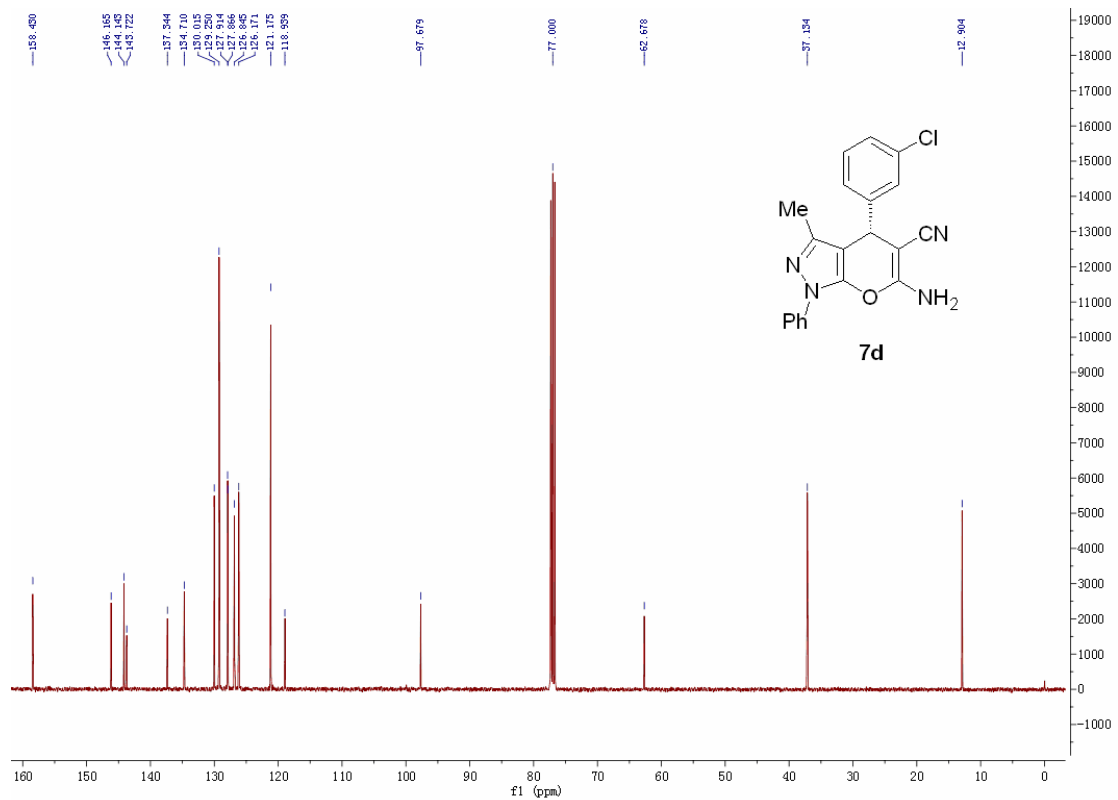
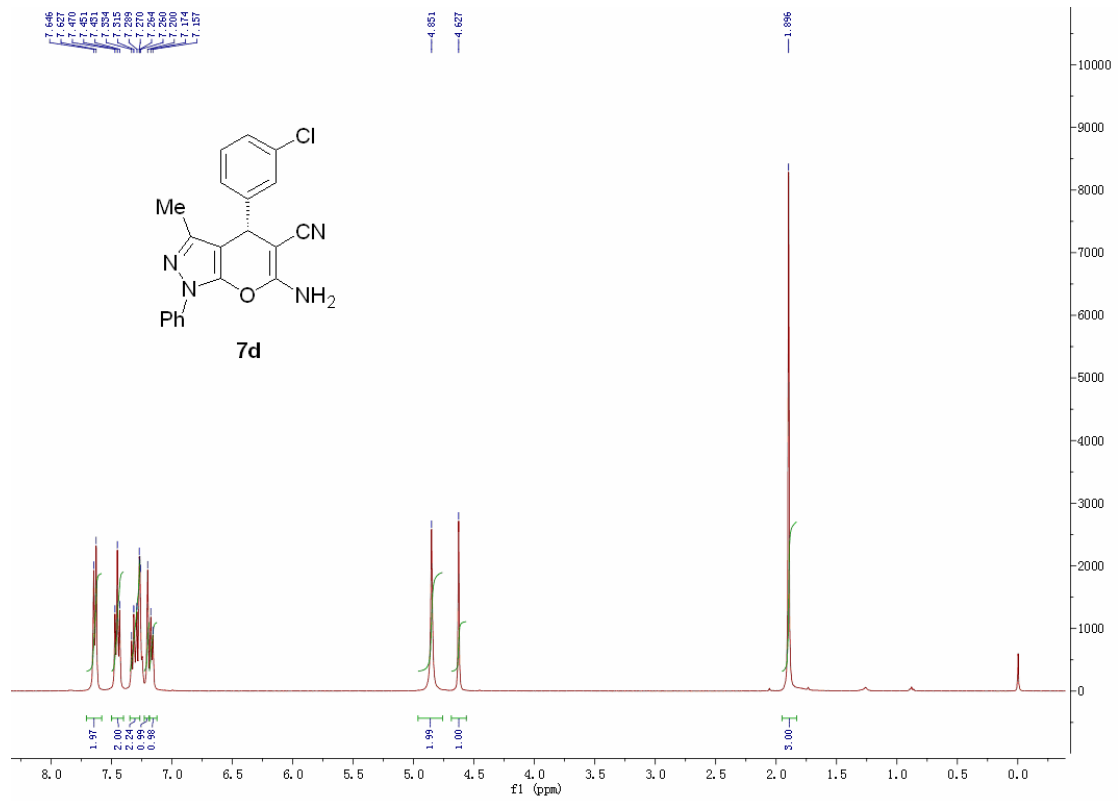
R indices (all data) R1 = 0.0414, wR2 = 0.0828
Absolute structure parameter -0.01(5)
Largest diff. peak and hole 0.209 and -0.296 e.A⁻³

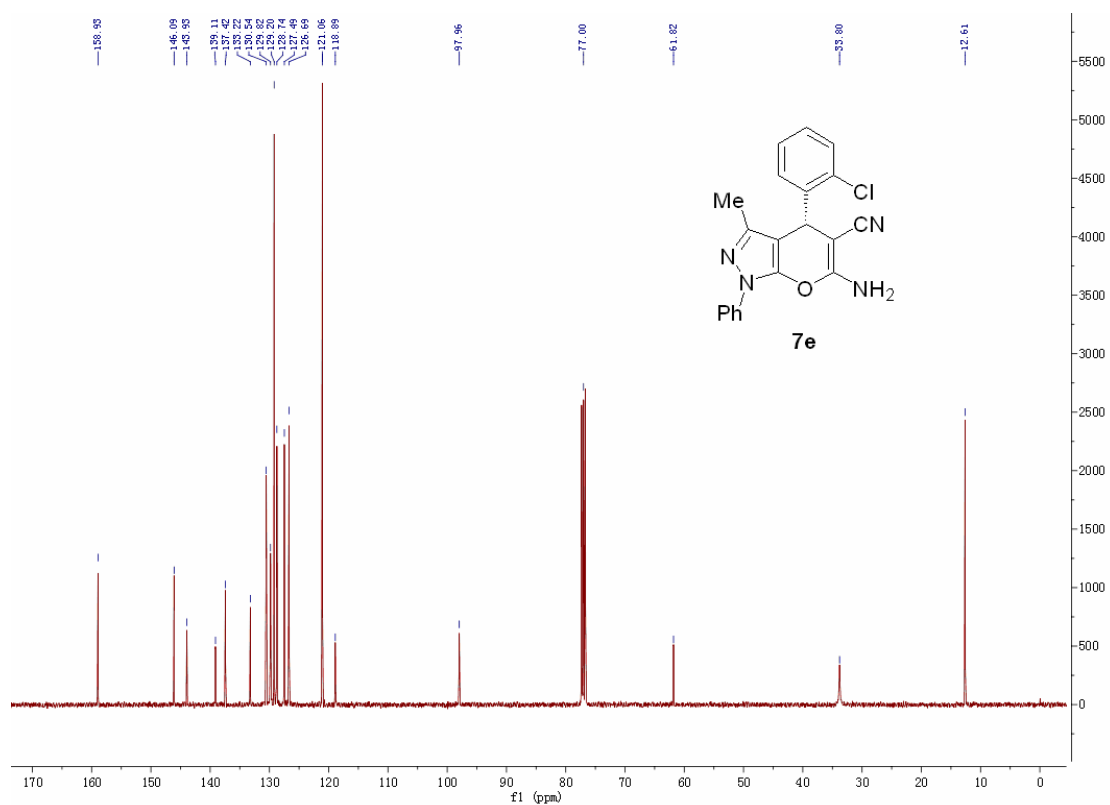
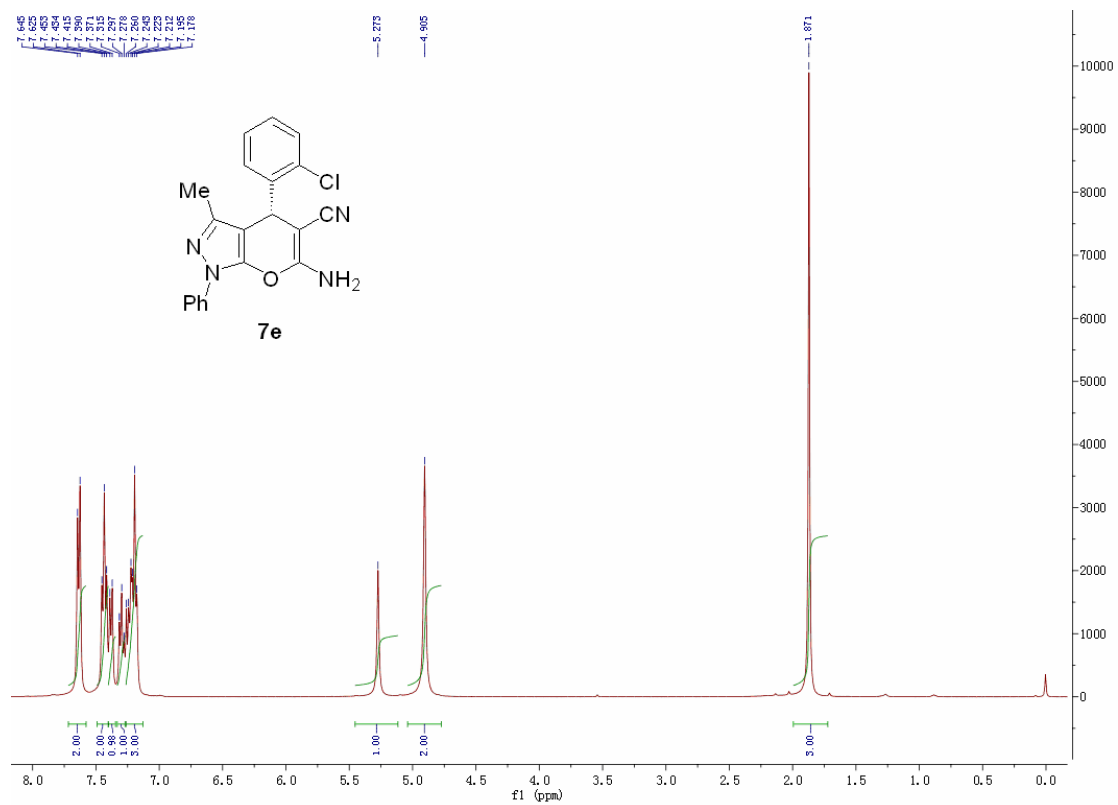
2. Copies of ¹H and ¹³C NMR Spectra

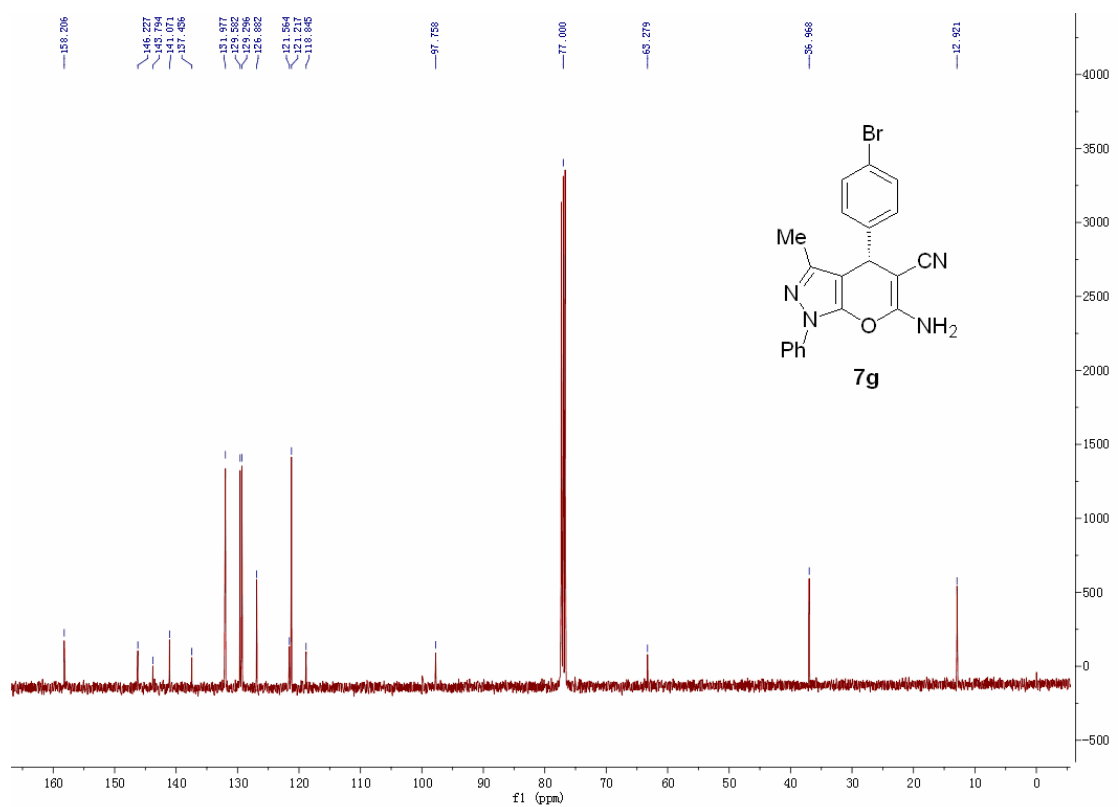
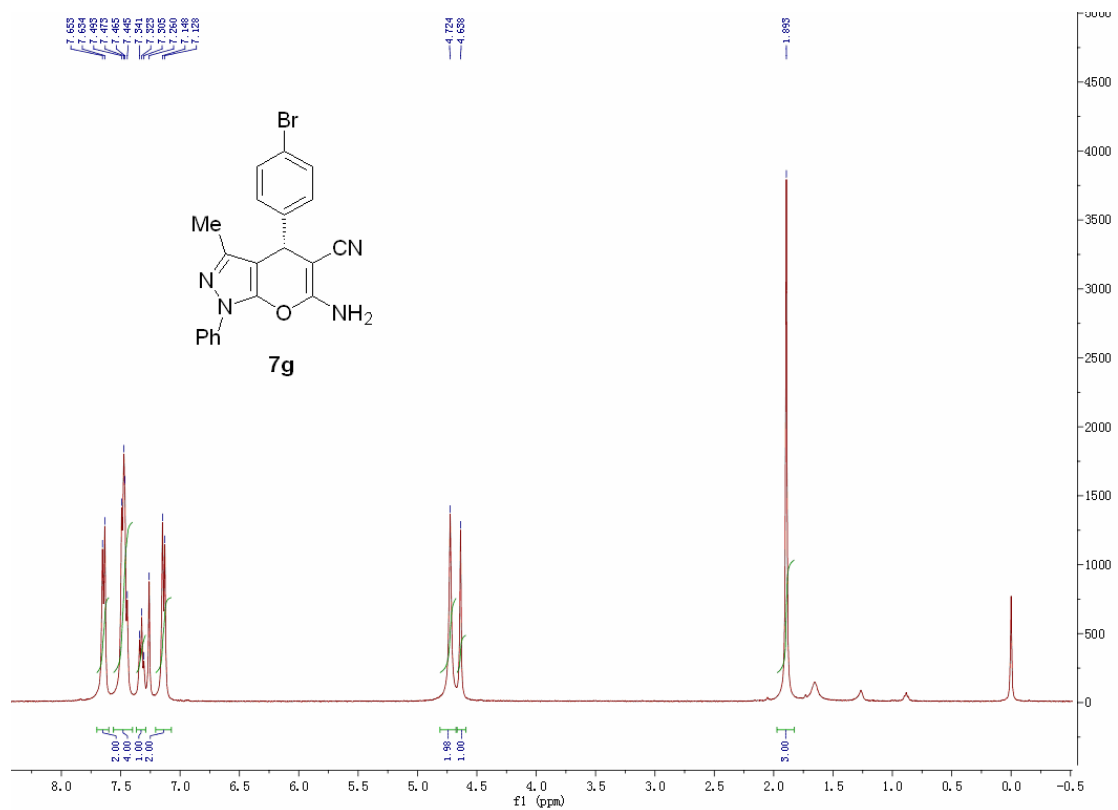


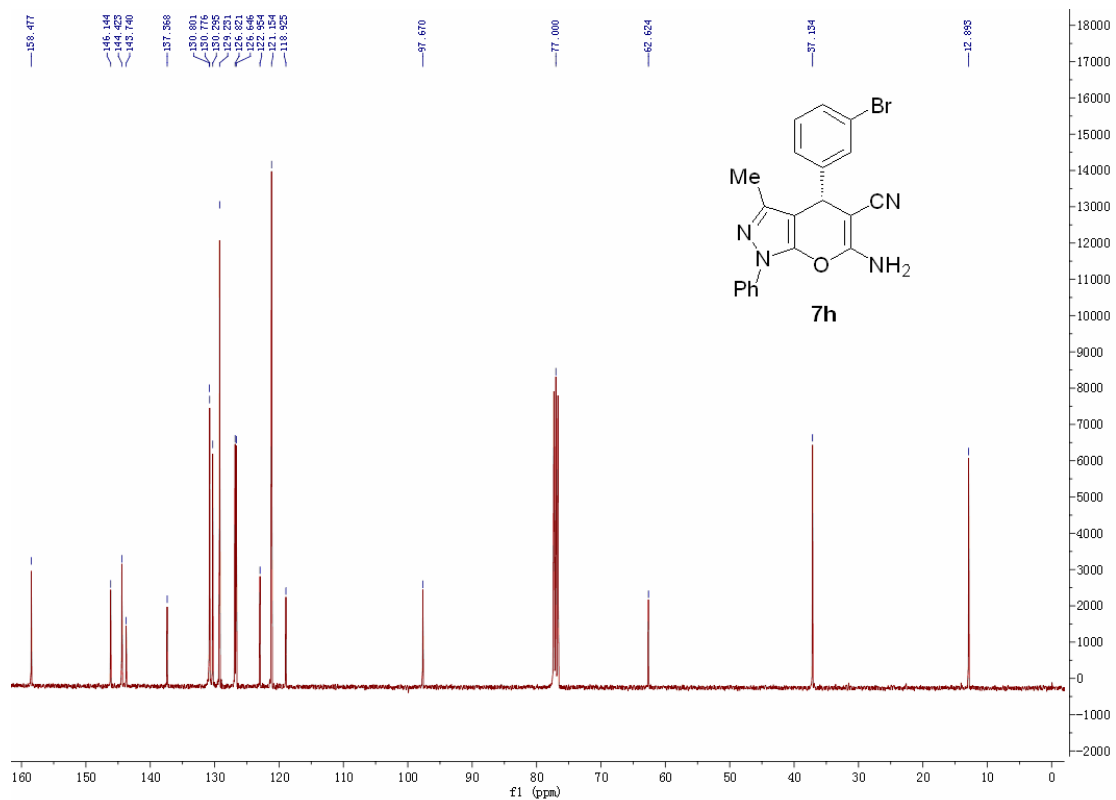
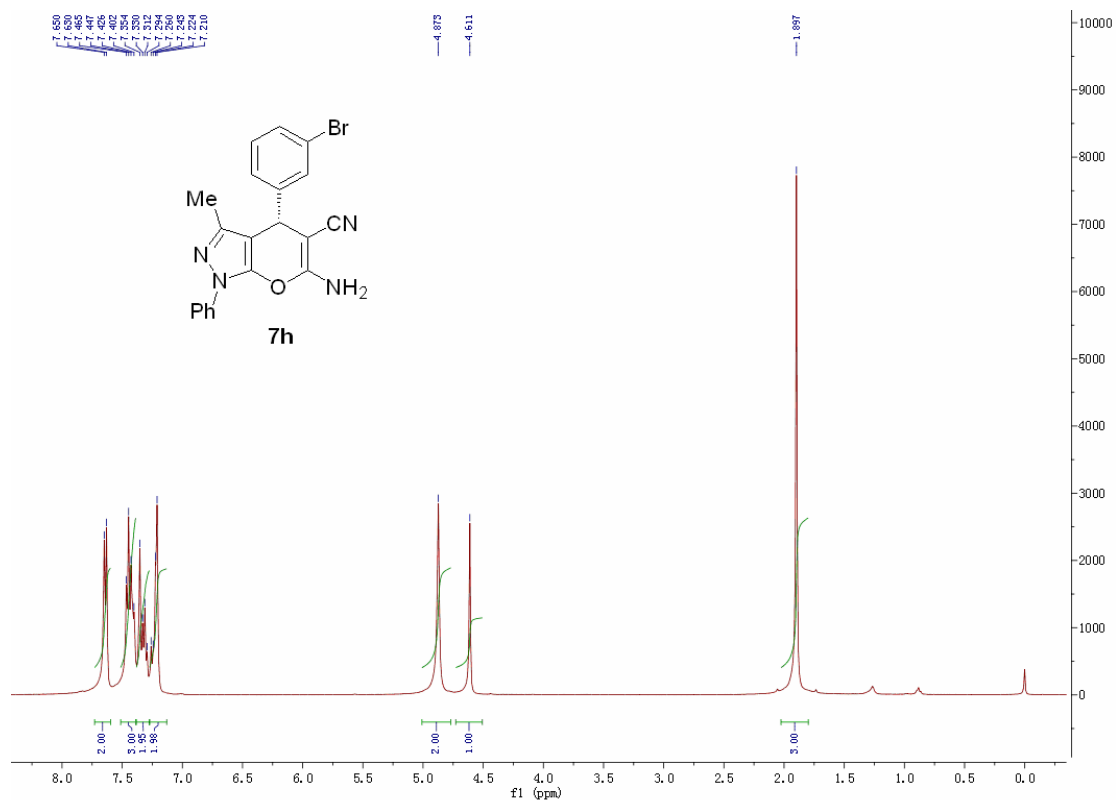


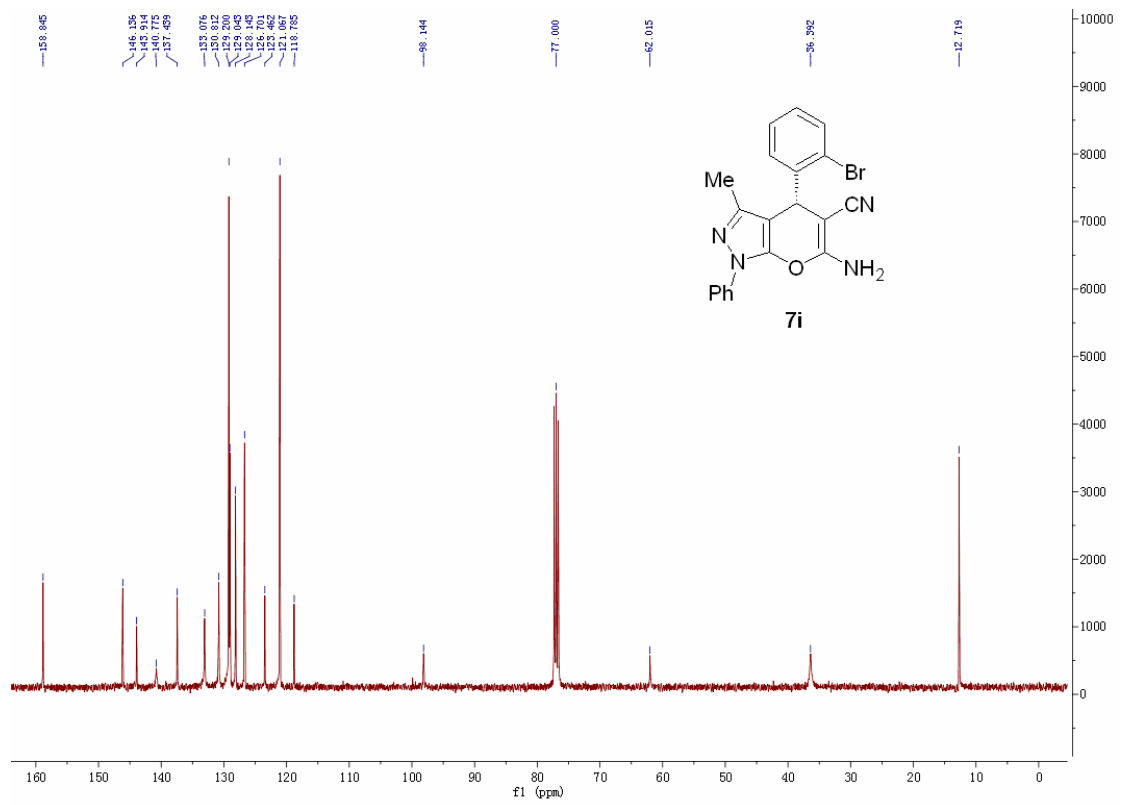
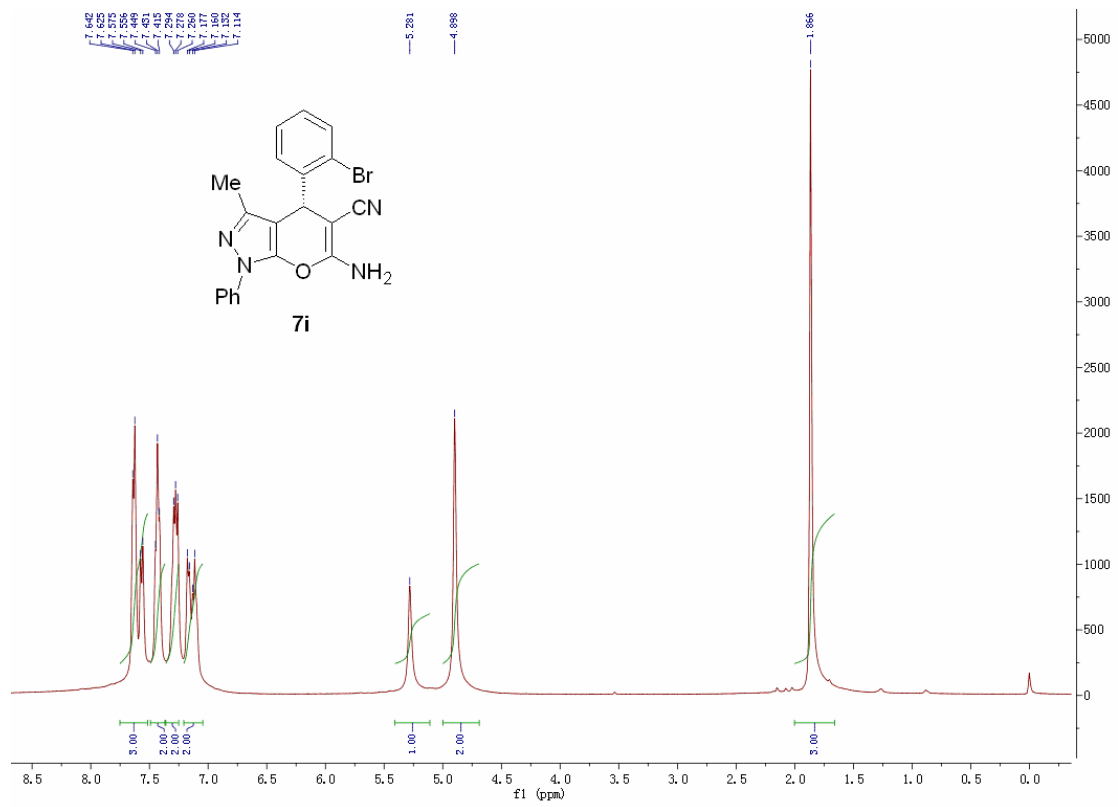


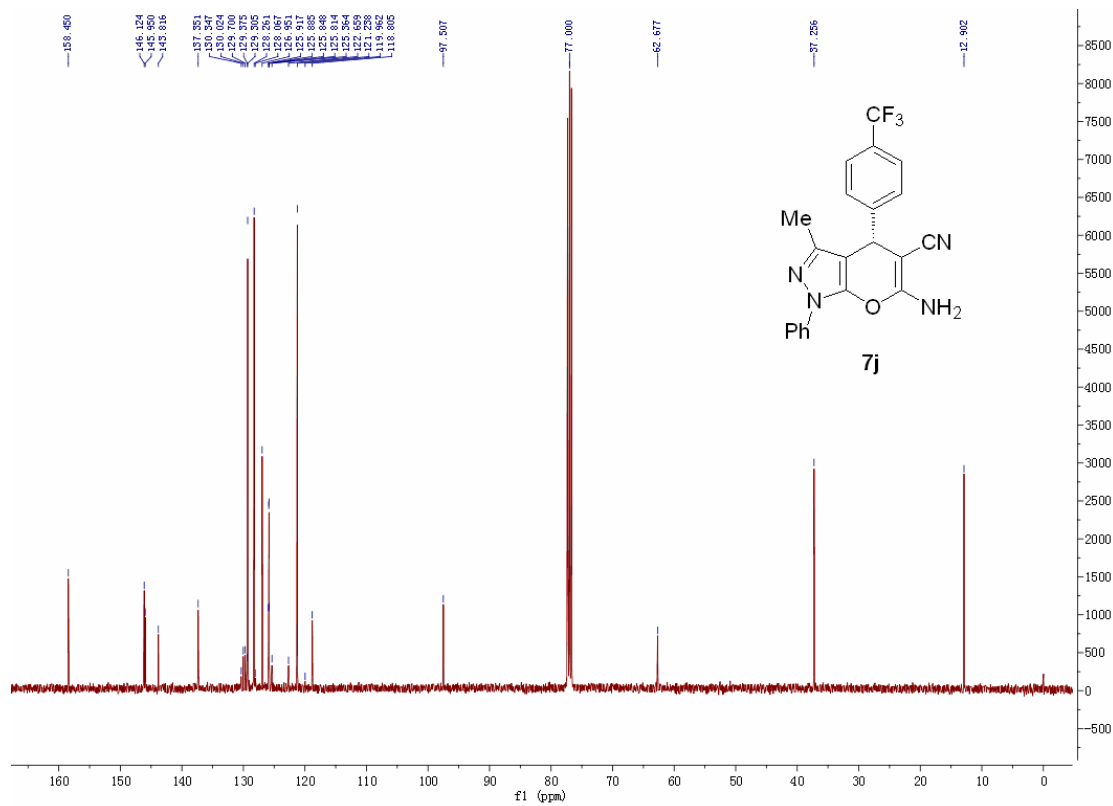
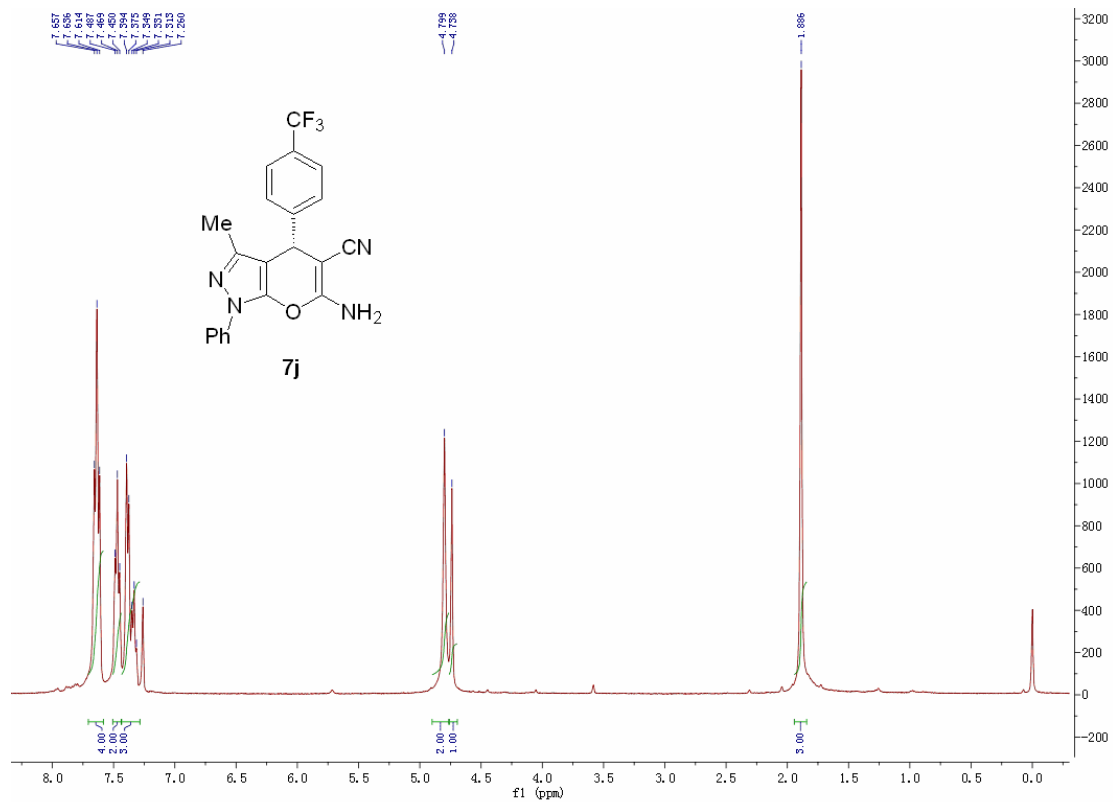


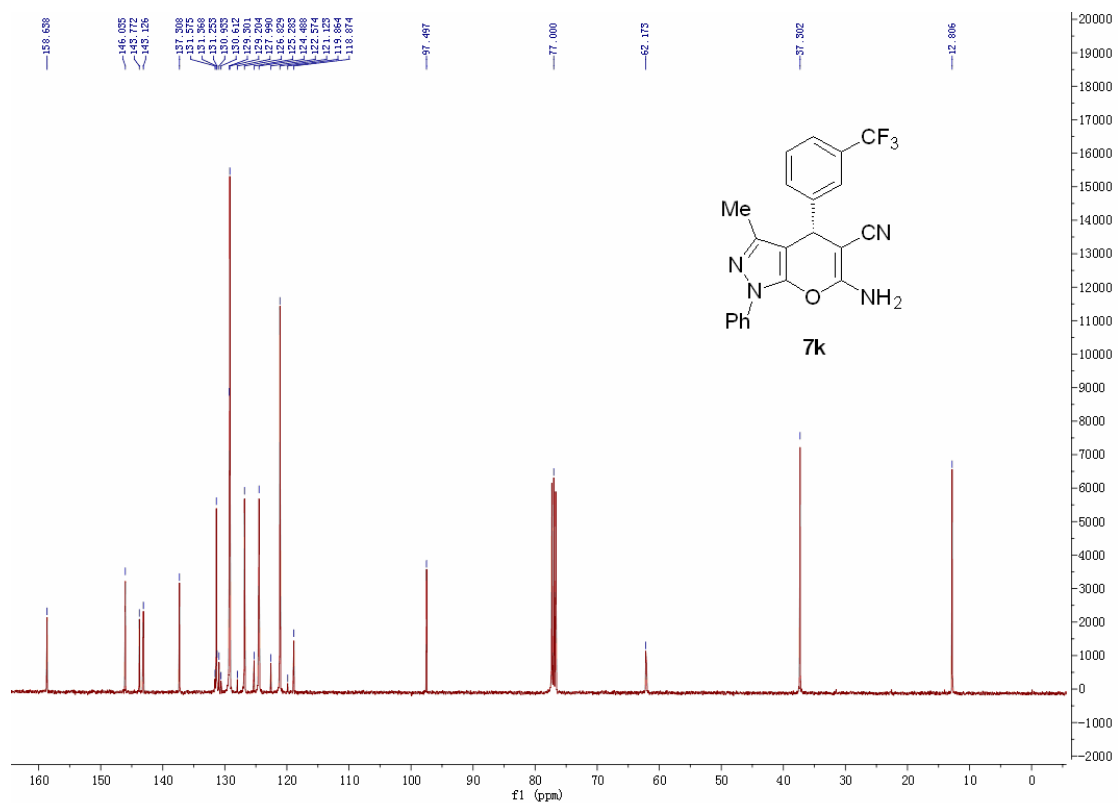
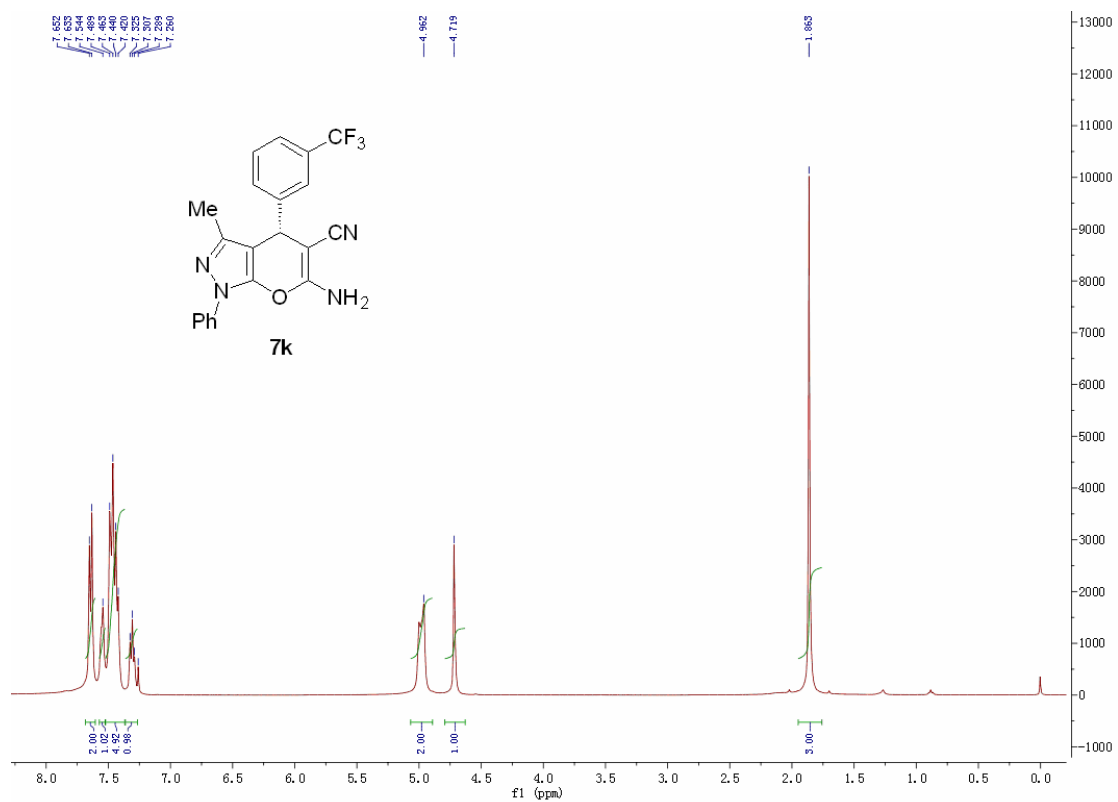


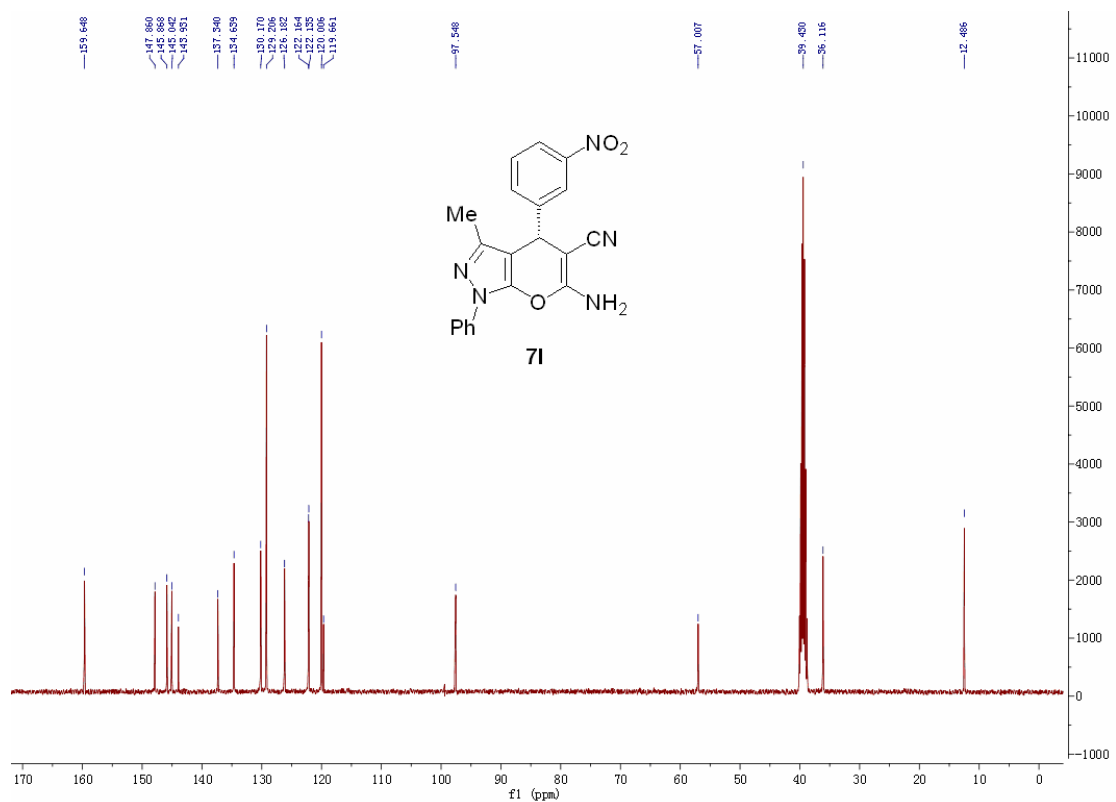
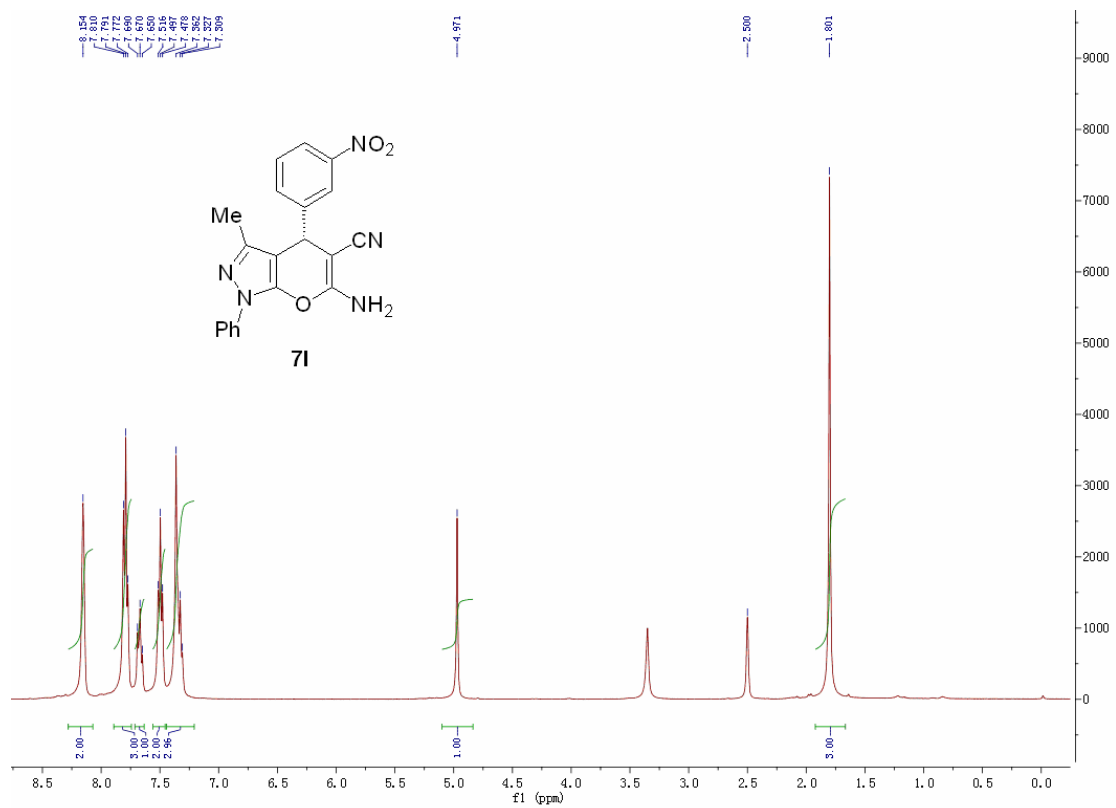


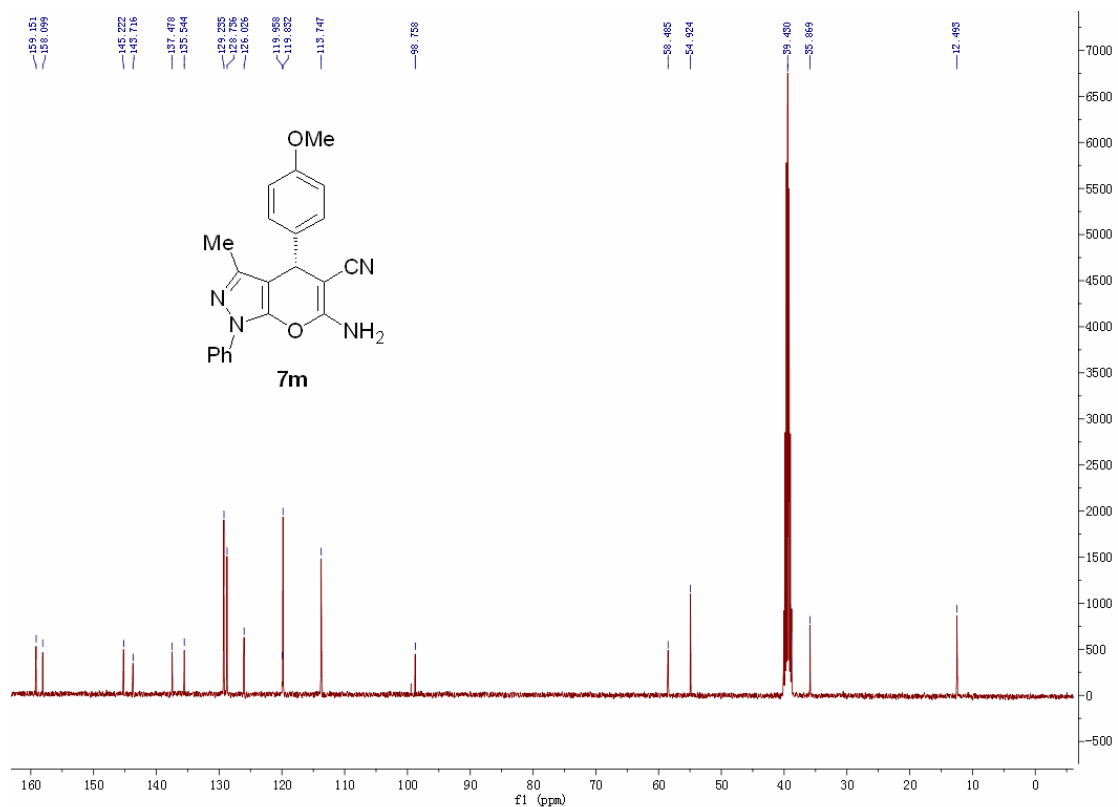
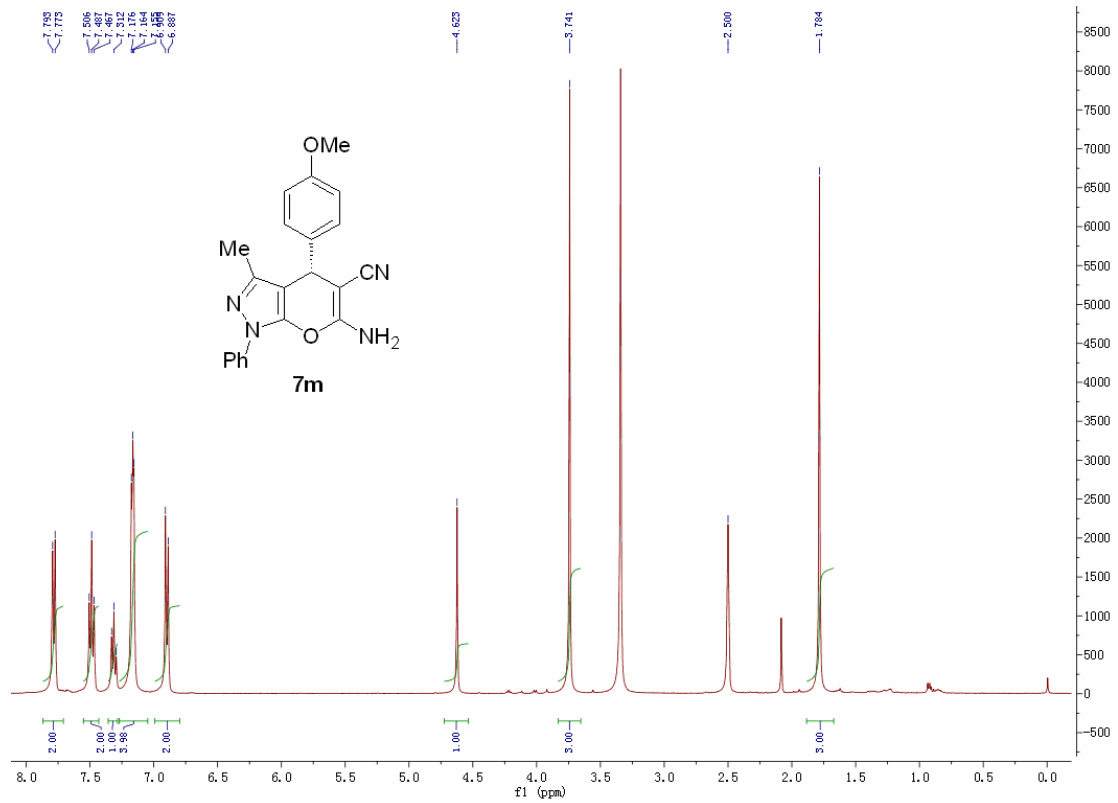


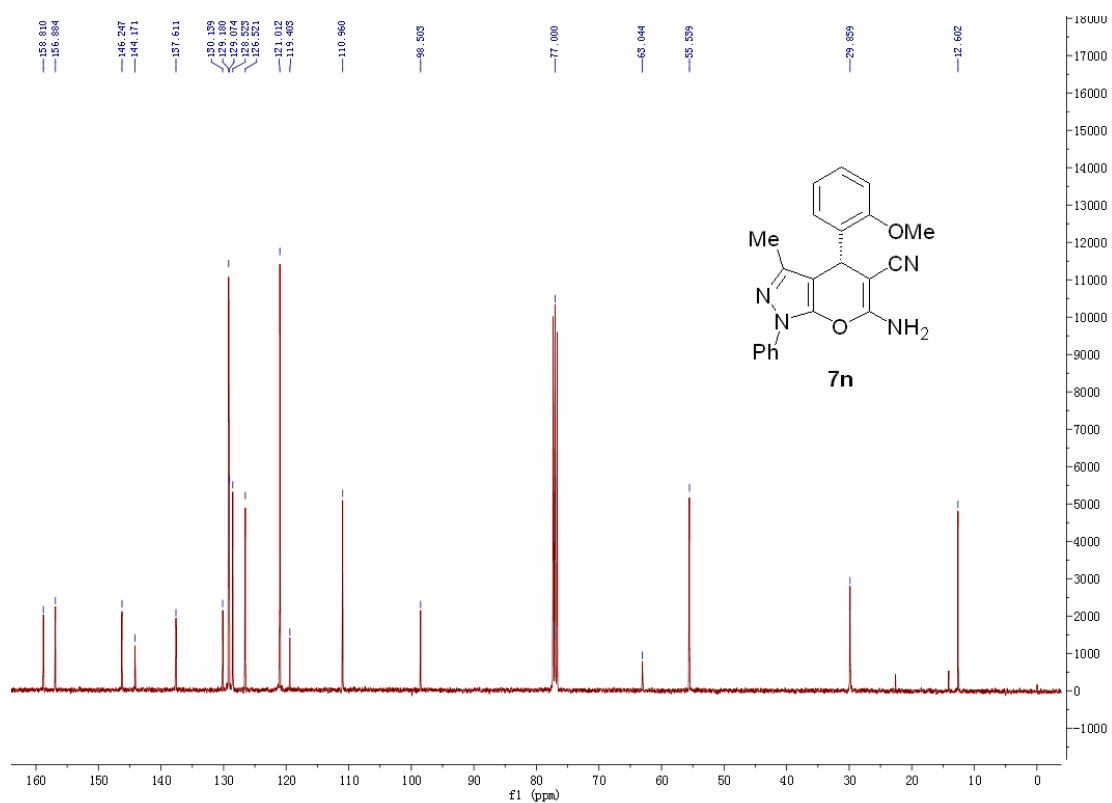
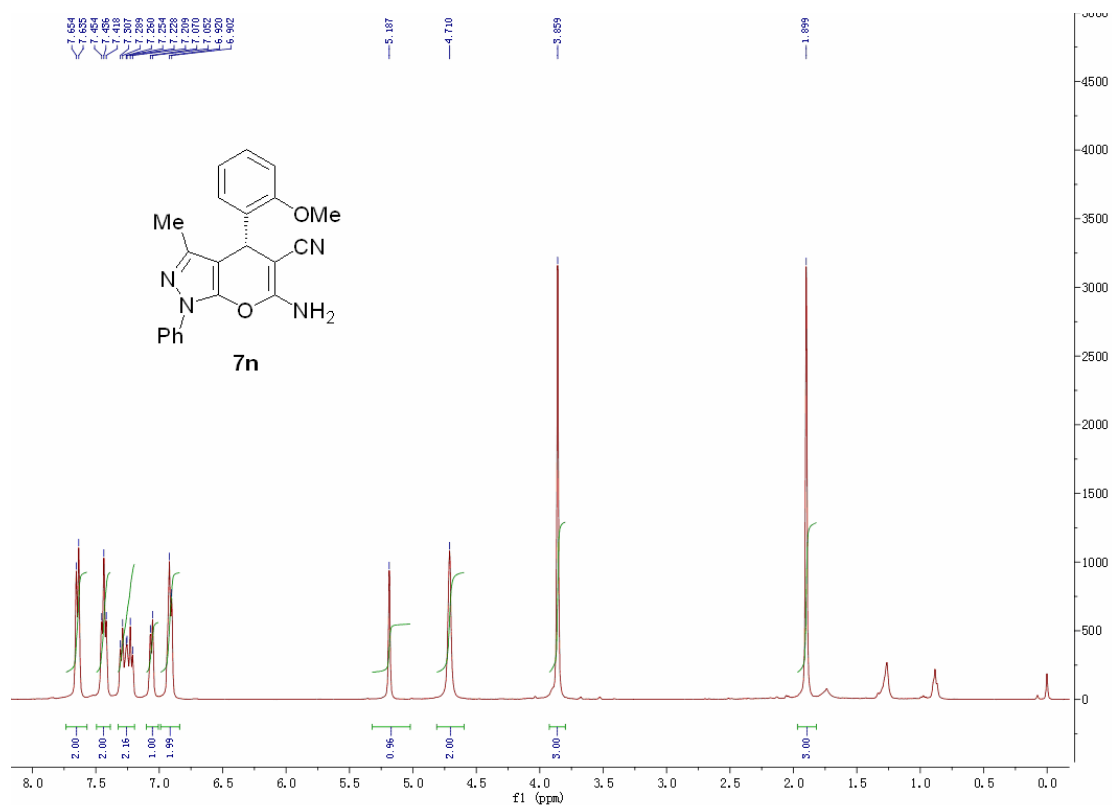


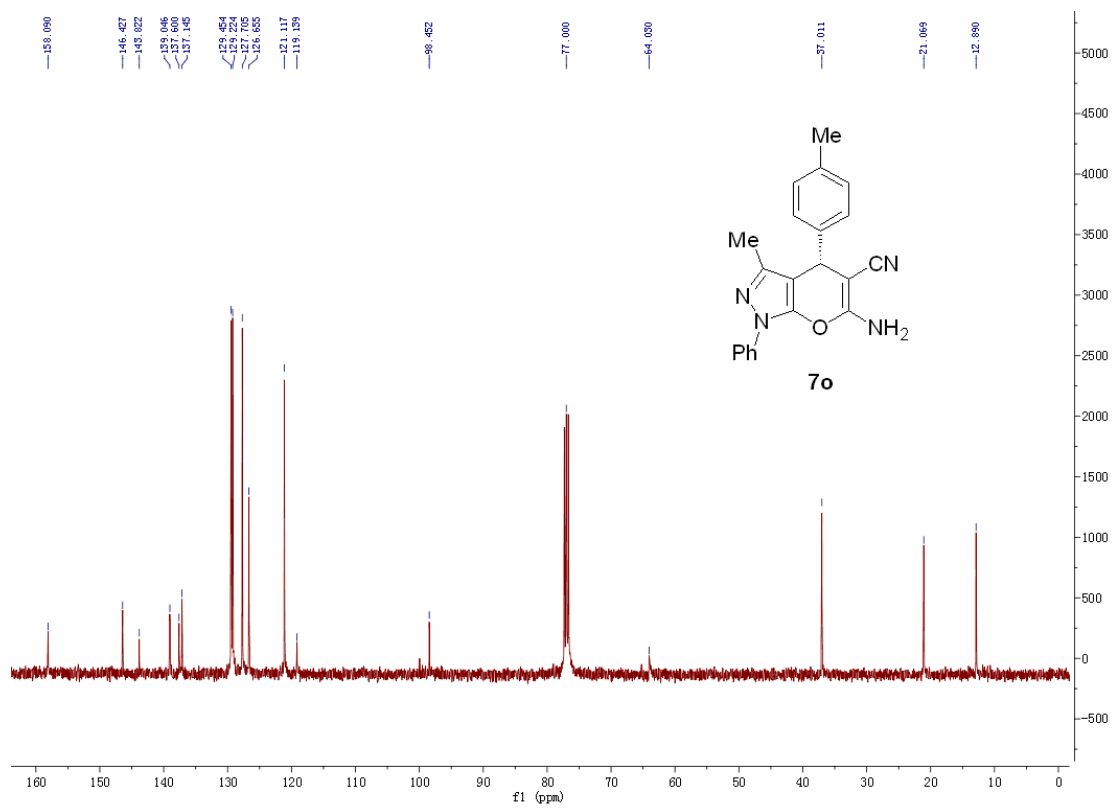
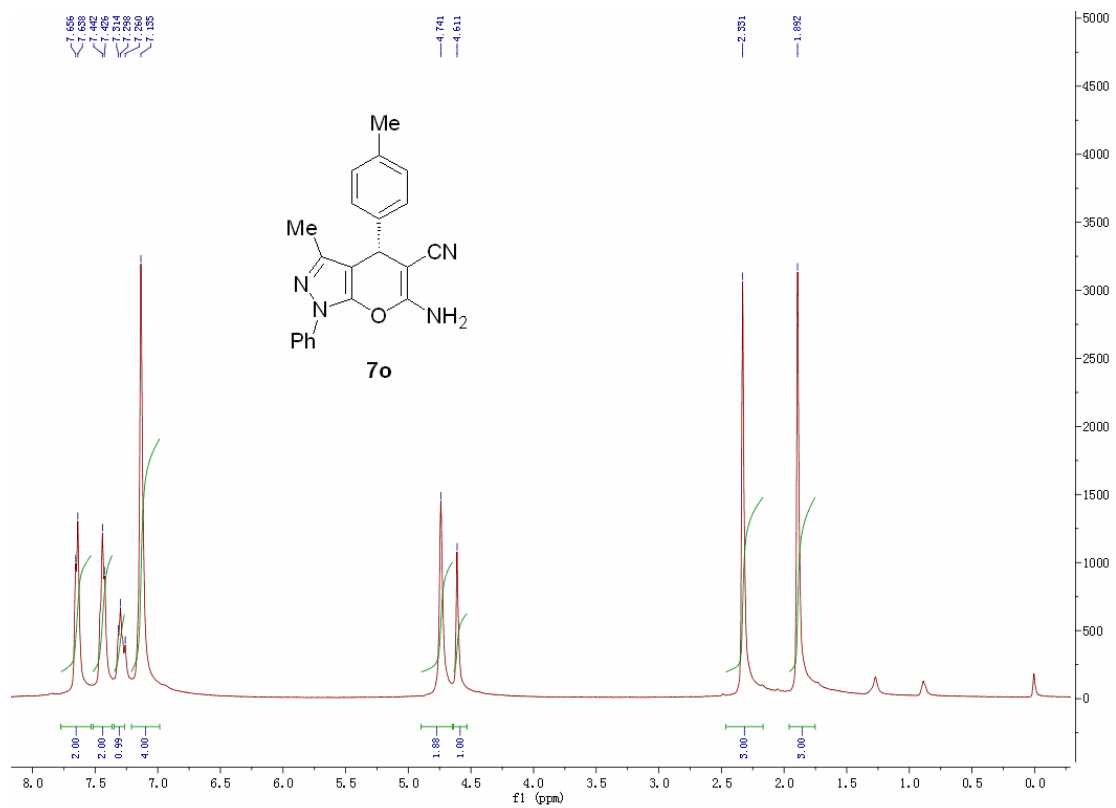


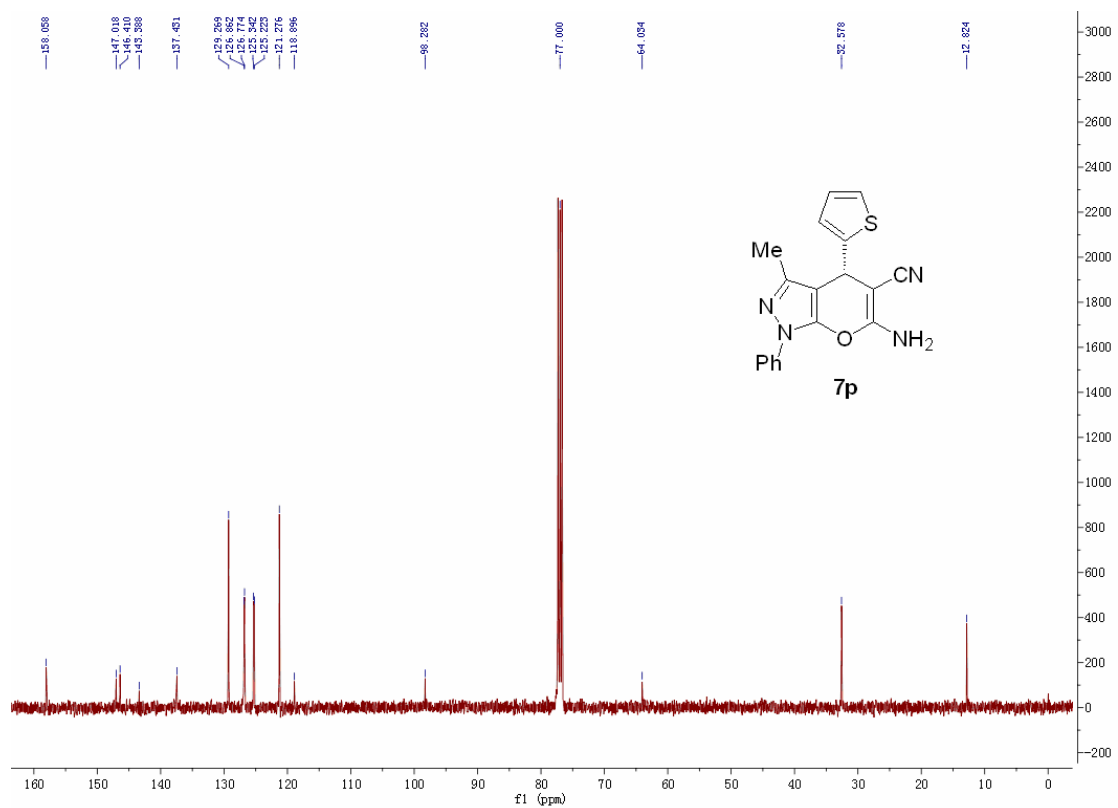
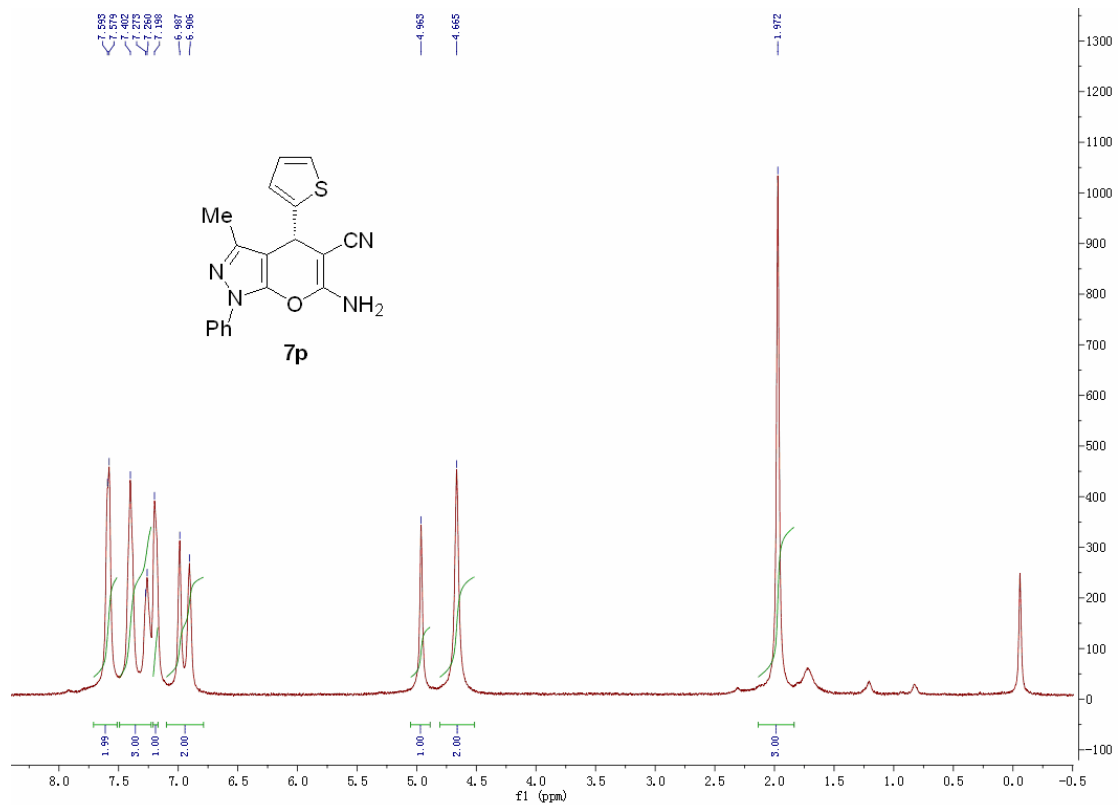


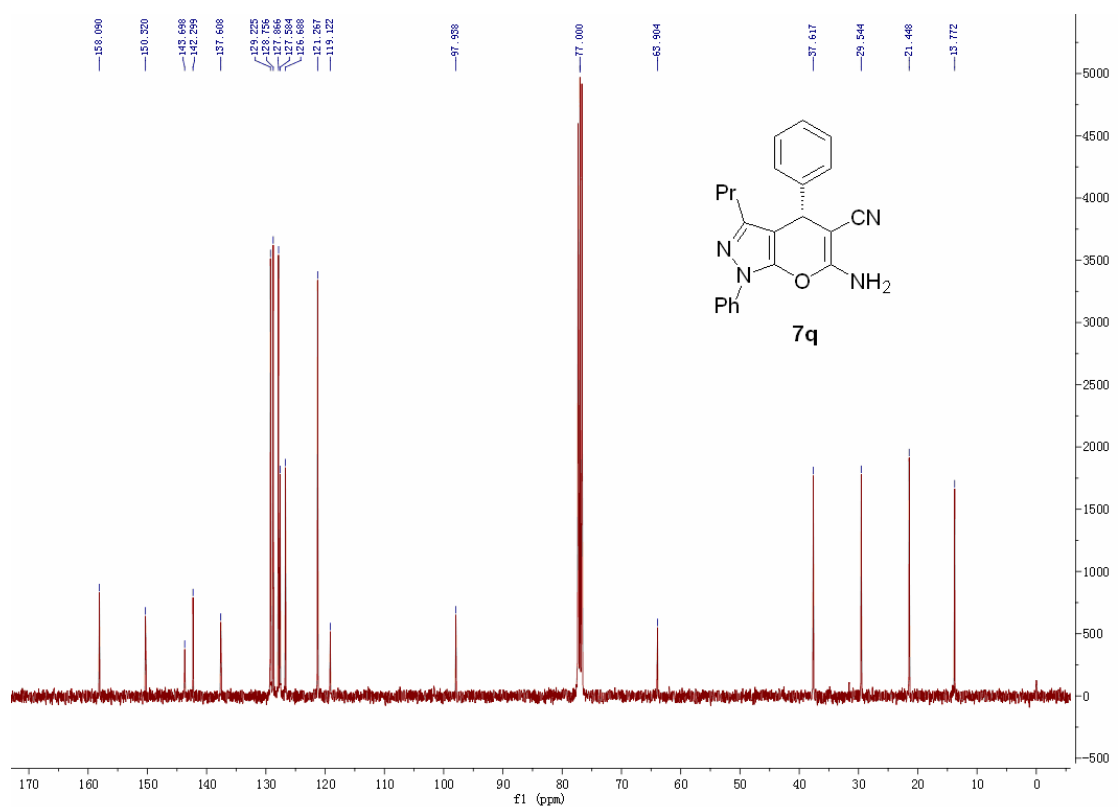
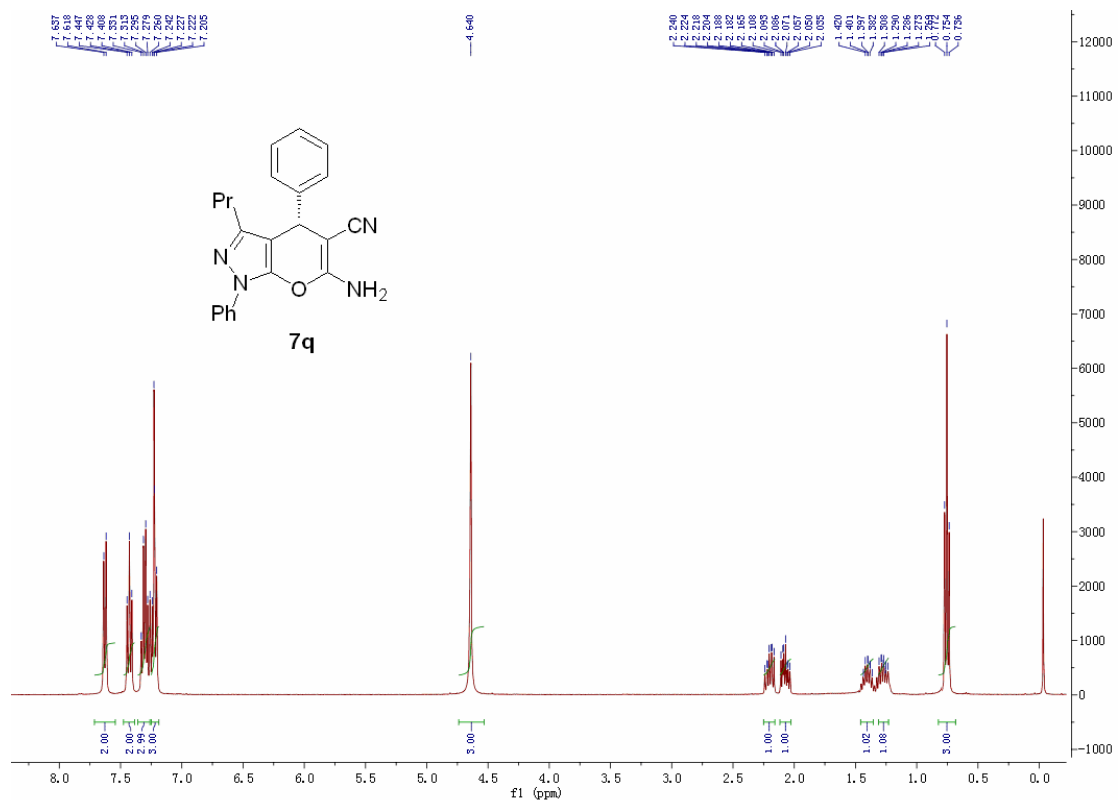


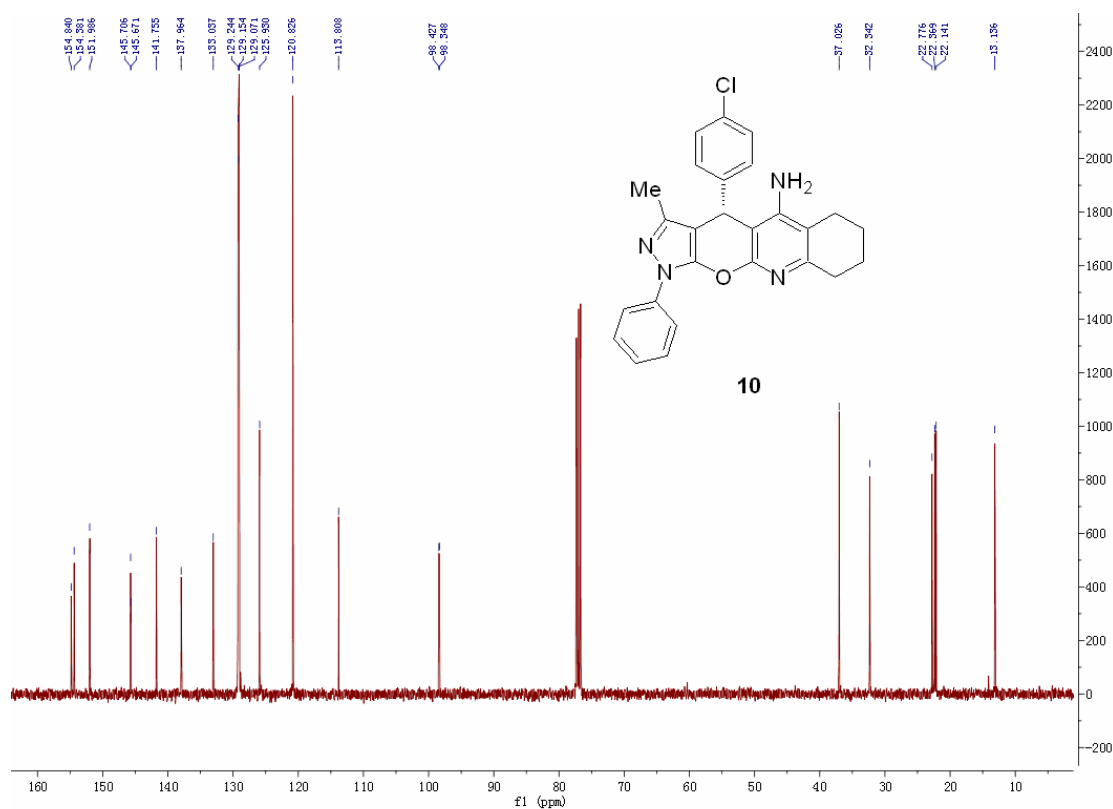
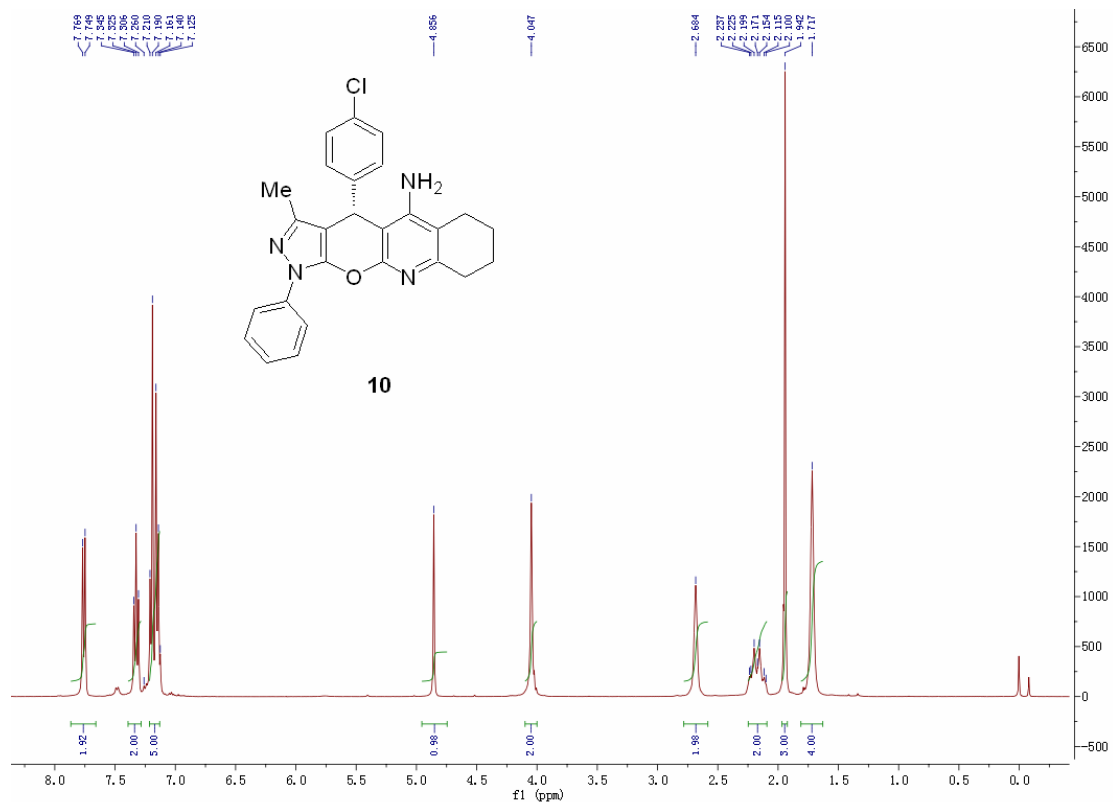










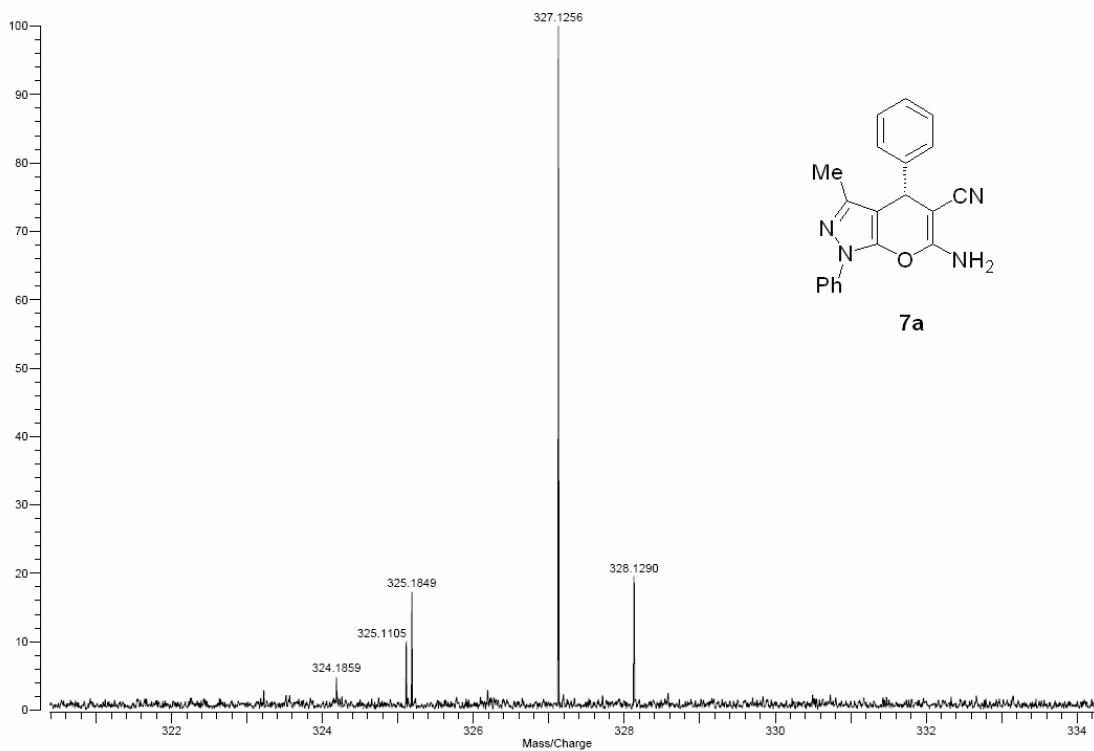


2. Copies of HRMS spectra

Varian QFT-ESI
File: D-H_ESI.trans

Mode: Negative
Scans: 1

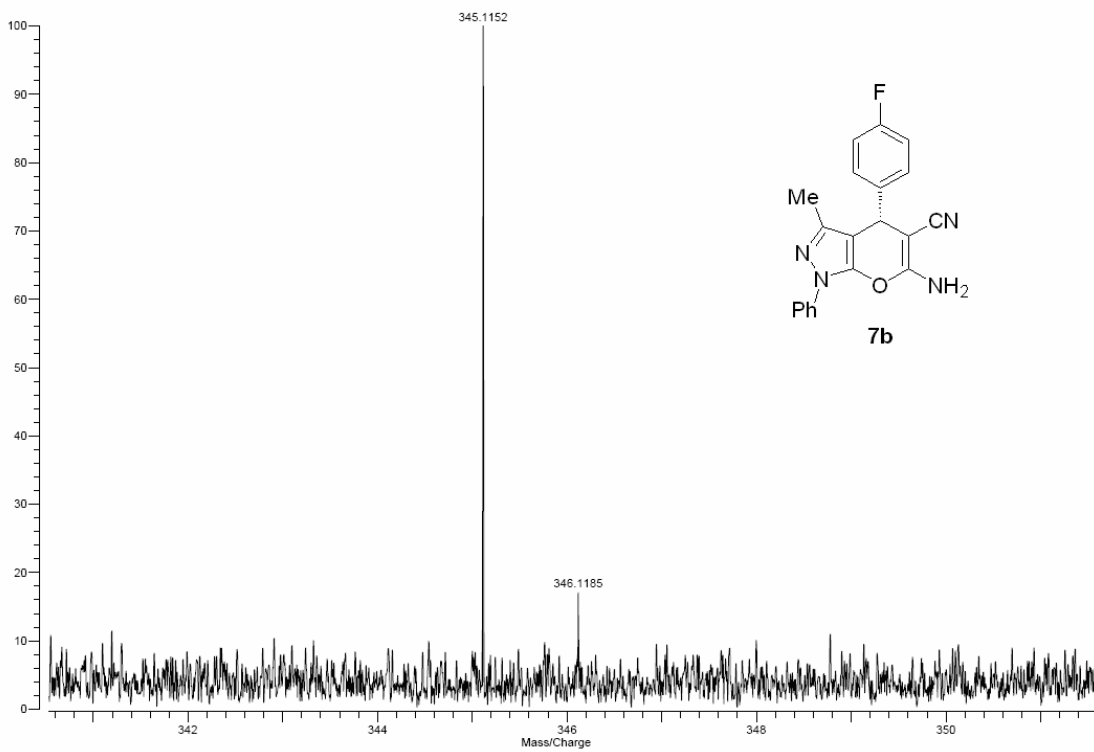
Date: 21-MAY-2013
Time: 10:19:20
Scale: 34.9534



Varian QFT-ESI
File: 4-F_ESI.trans

Mode: Negative
Scans: 1

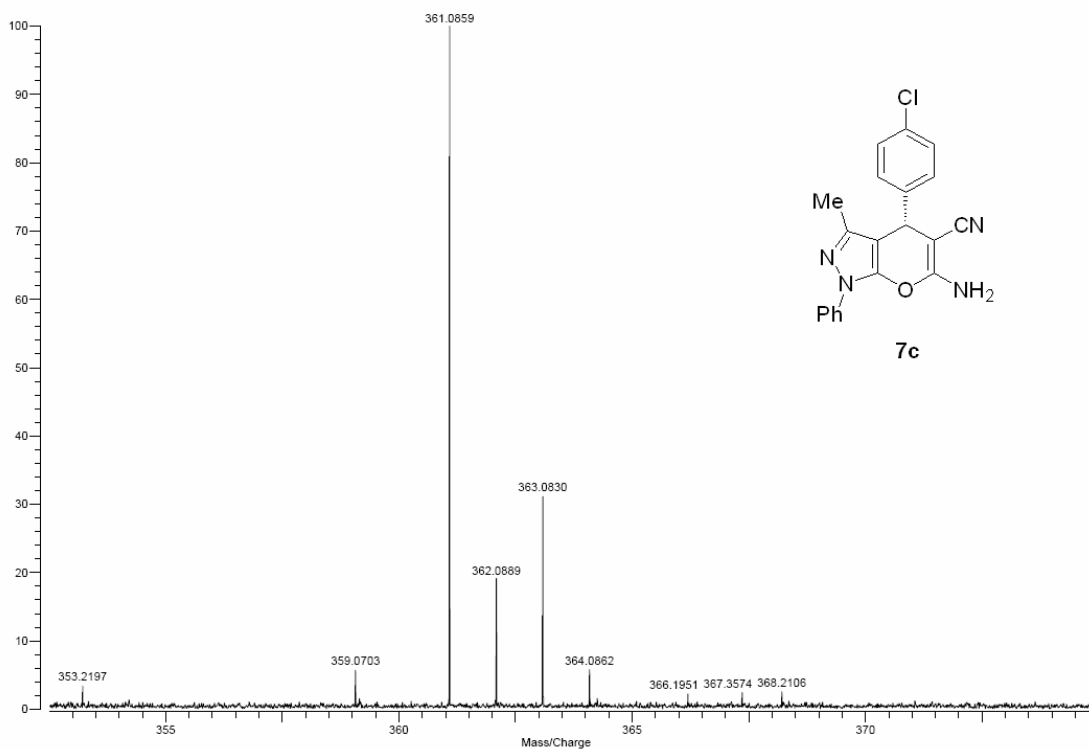
Date: 20-MAY-2013
Time: 16:51:17
Scale: 181.4321



Varian QFT-ESI
File: 4-Cl_ESI.trans

Mode: Negative
Scans: 1

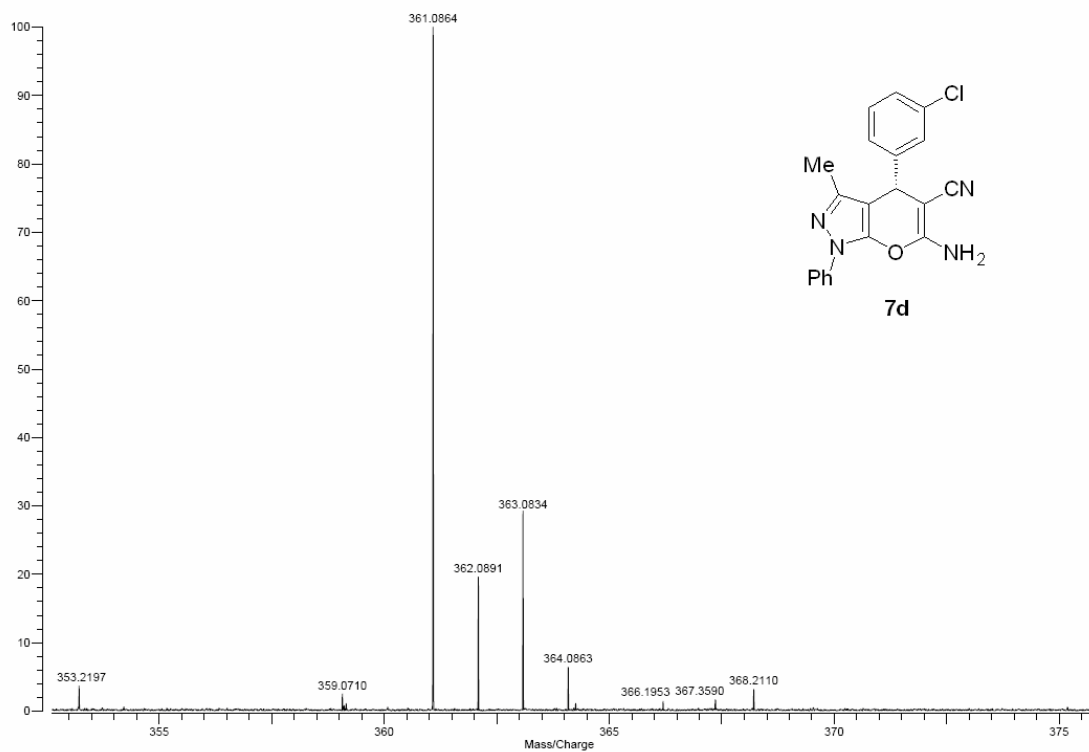
Date: 20-MAY-2013
Time: 16:45:06
Scale: 18.9229



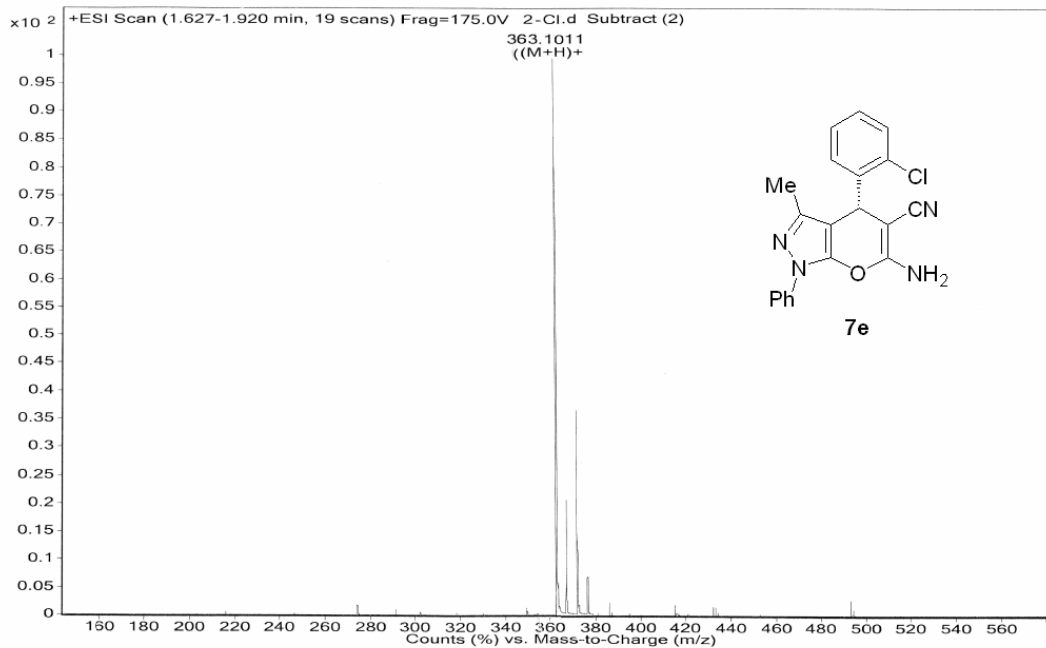
Varian QFT-ESI
File: 3-Cl_ESI.trans

Mode: Negative
Scans: 1

Date: 20-MAY-2013
Time: 16:45:19
Scale: 6.8487

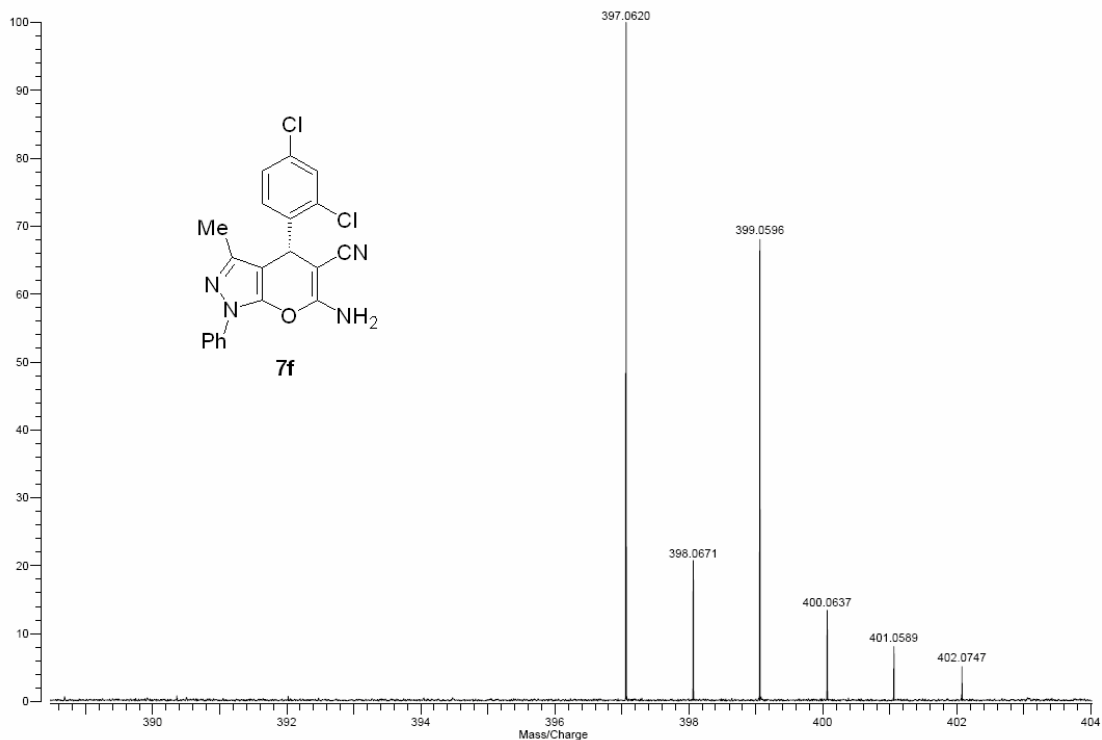


Sample Name	lc/ms	Position	P1-A3	Instrument Name	Instrument 1	User Name	
Inj Vol	3	InjPosition		SampleType	Sample	IRM Calibration Status	Some Ions Missed
Data Filename	2-Cl.d	ACQ Method	chen-ms.m	Comment		Acquired Time	6/17/2013 11:54:15 AM



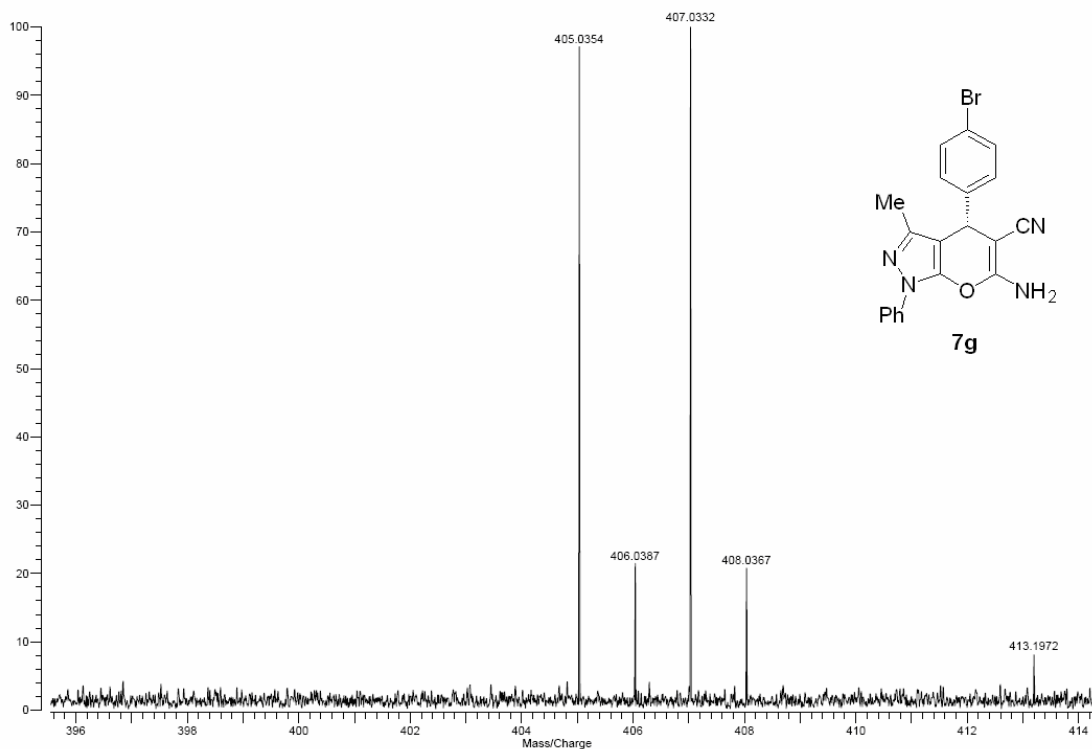
Varian ProMALDI
File: ZZH-WHX-2,4-CL-DHB-LASER60.trans

Mode: Positive
Scans: 1
Date: 24-MAY-2013
Time: 12:49:42
Scale: 9.8357



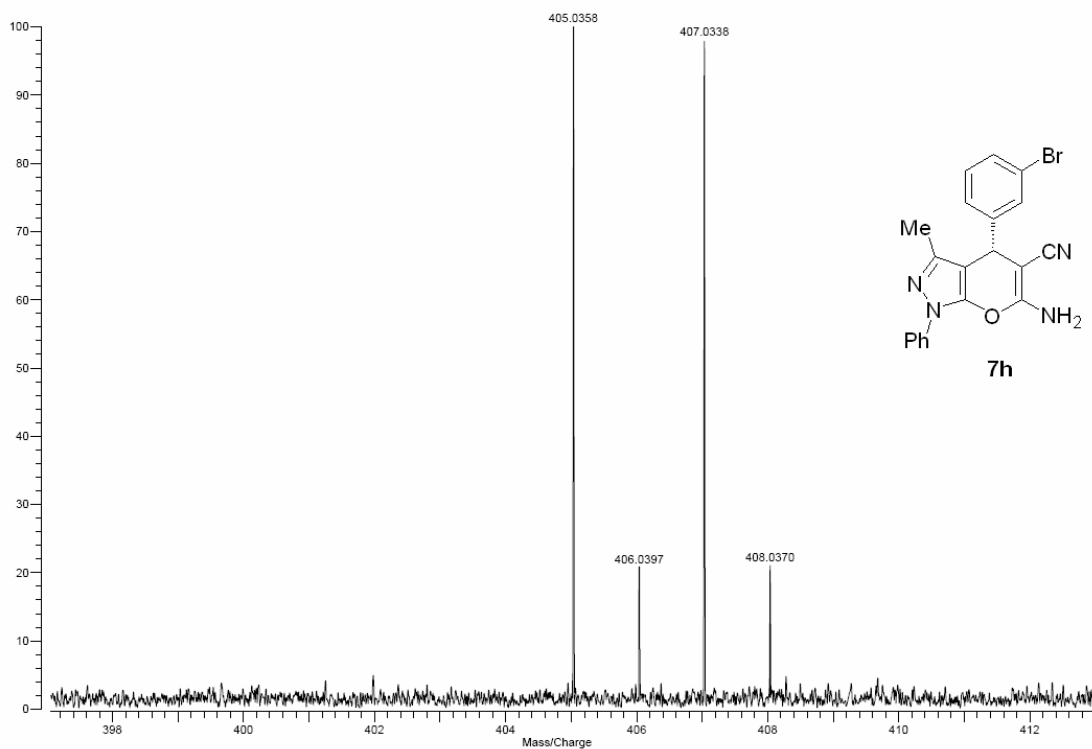
Varian QFT-ESI
File: 4-Br_ESI.trans

Mode: Negative
Scans: 1
Date: 20-MAY-2013
Time: 16:26:22
Scale: 61.8027



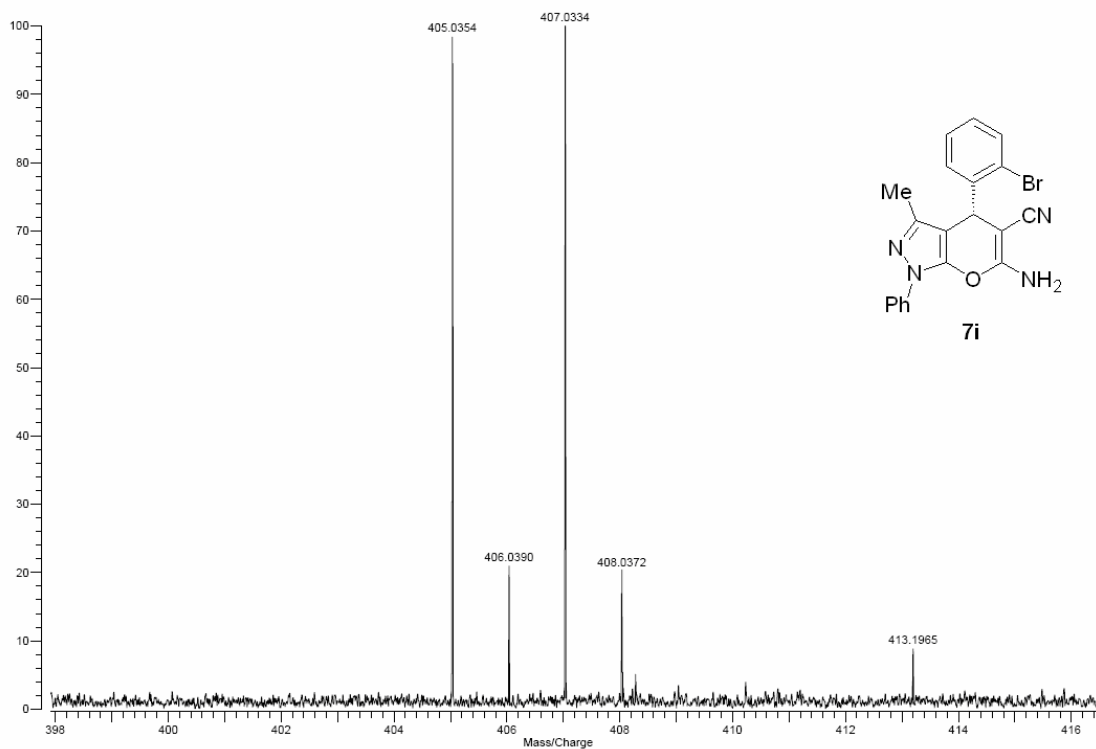
Varian QFT-ESI
File: 3-Br_ESI.trans

Mode: Negative
Scans: 1
Date: 20-MAY-2013
Time: 16:27:32
Scale: 64.5608



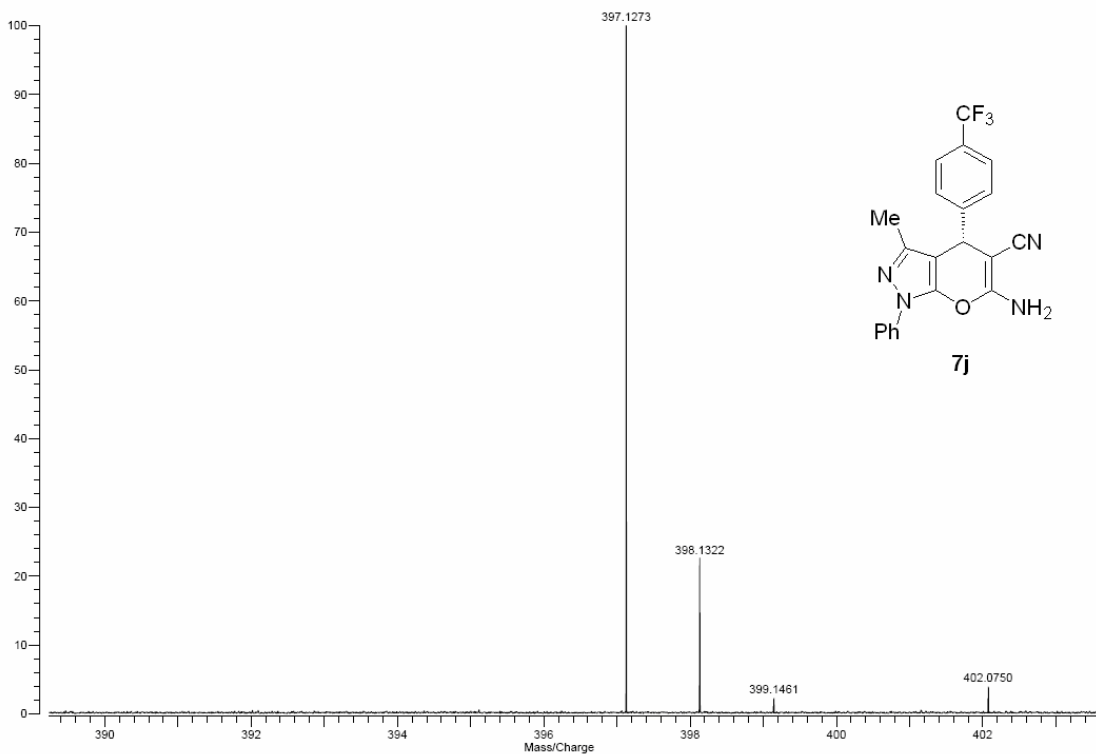
Varian QFT-ESI
File: 2-Br_ESI.trans

Mode: Negative
Scans: 1
Date: 20-MAY-2013
Time: 16:26:51
Scale: 47.7996



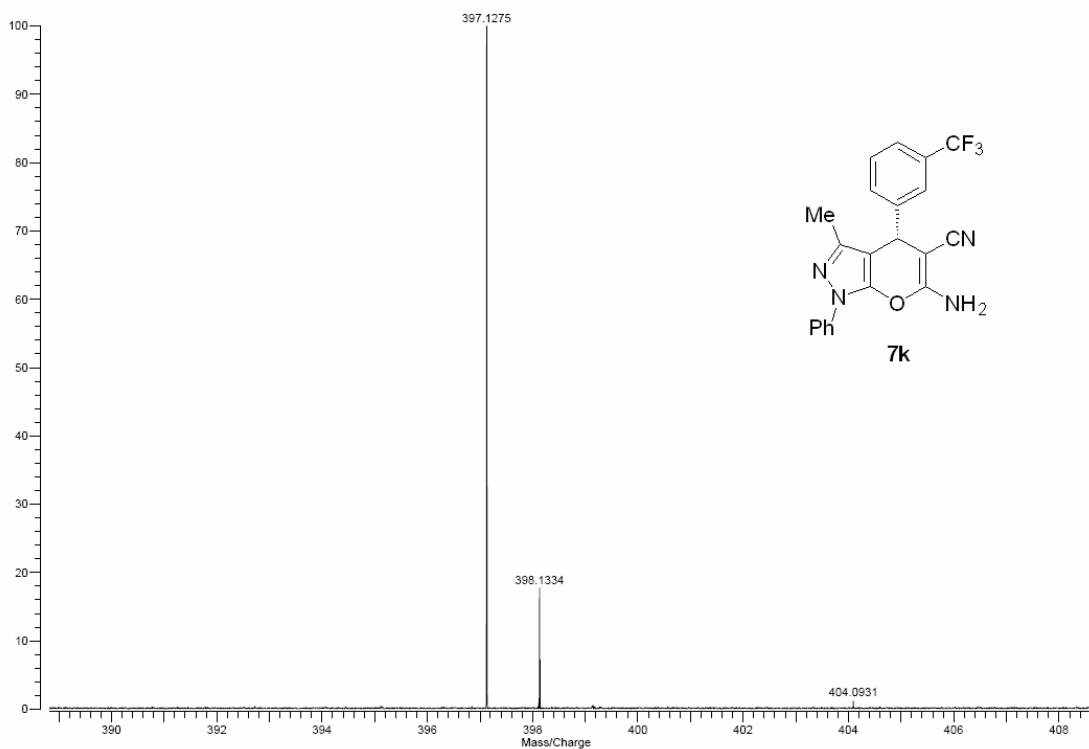
Varian ProMALDI
File: ZZH-WHX-4-CF3-DHB-LASER60.trans

Mode: Positive
Scans: 1
Date: 24-MAY-2013
Time: 12:57:51
Scale: 9.2864



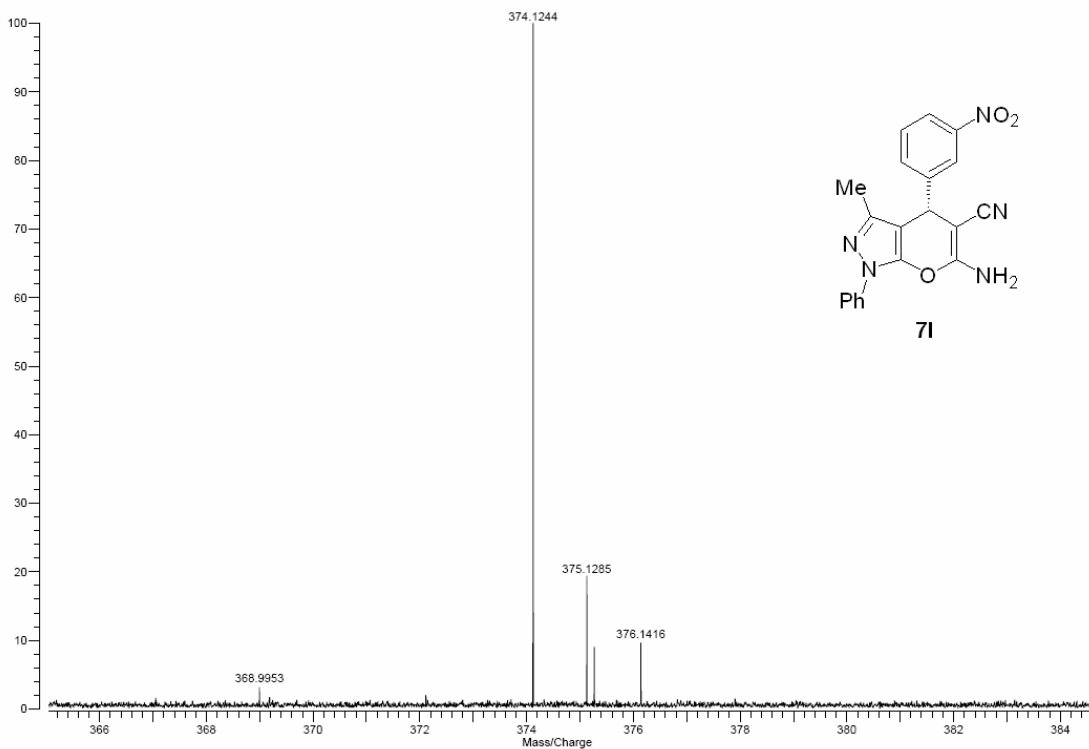
Varian ProMALDI
File: ZZH-WHX-3-CF3-DHB-LASER60.trans

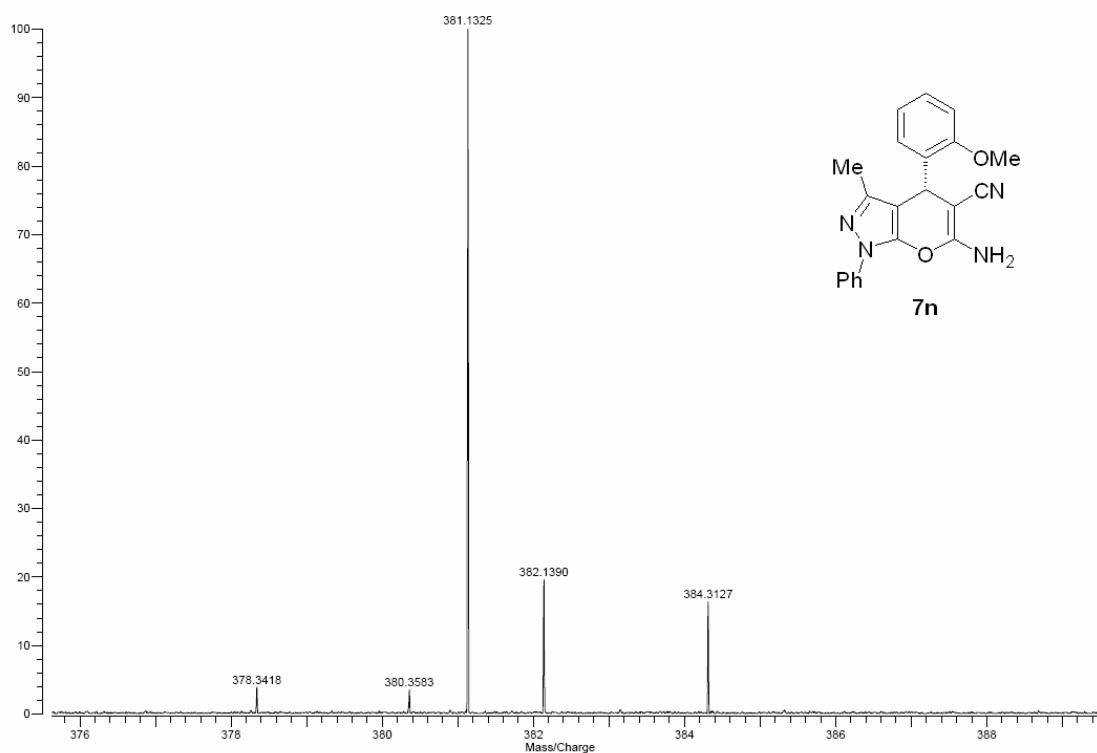
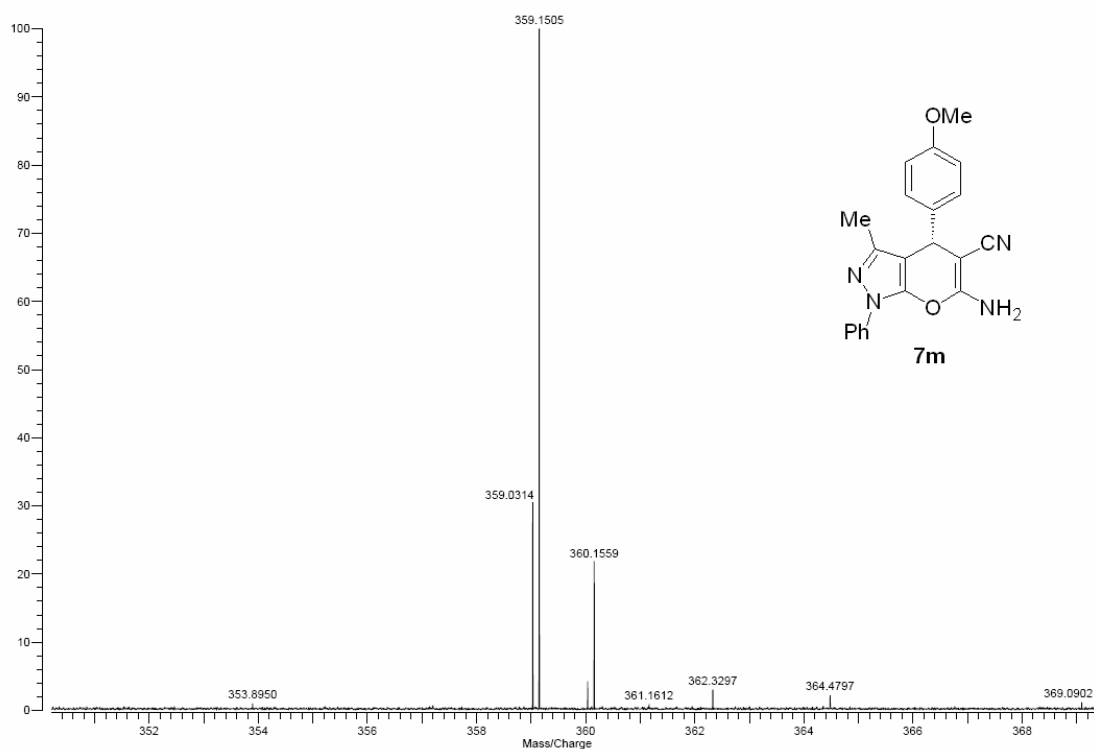
Mode: Positive
Scans: 1
Date: 24-MAY-2013
Time: 14:48:39
Scale: 6.4981

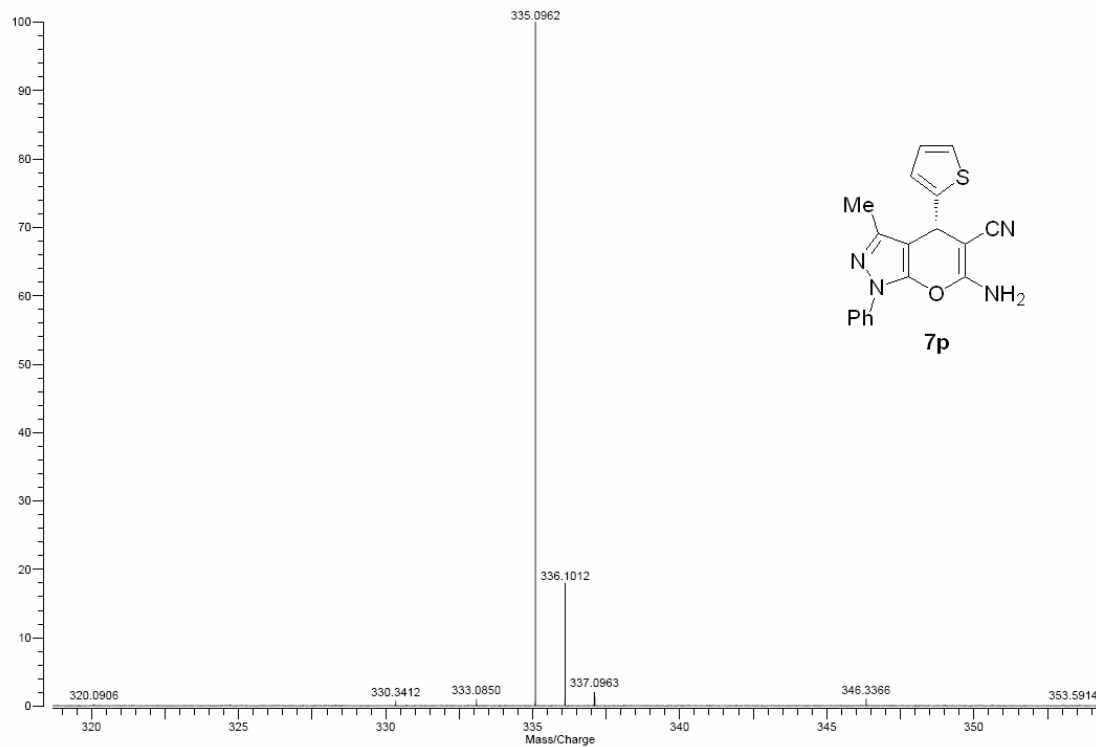
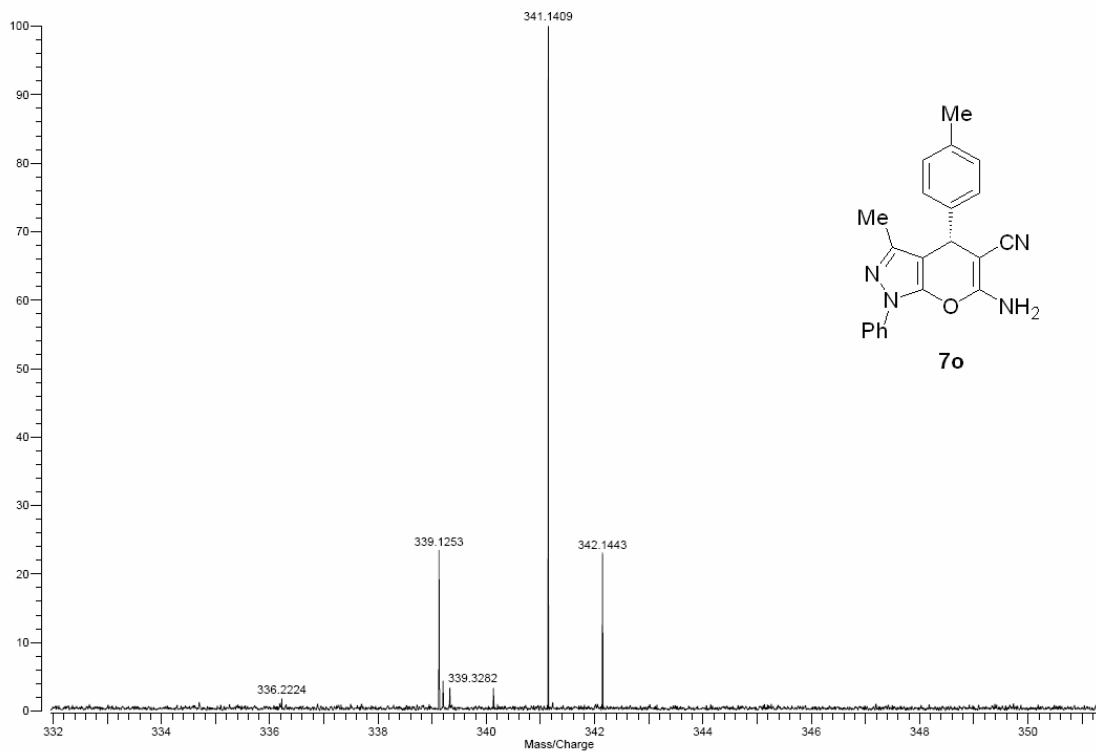


Varian ProMALDI
File: ZZH-WHX-3-NO2-DHB-LASER60.trans

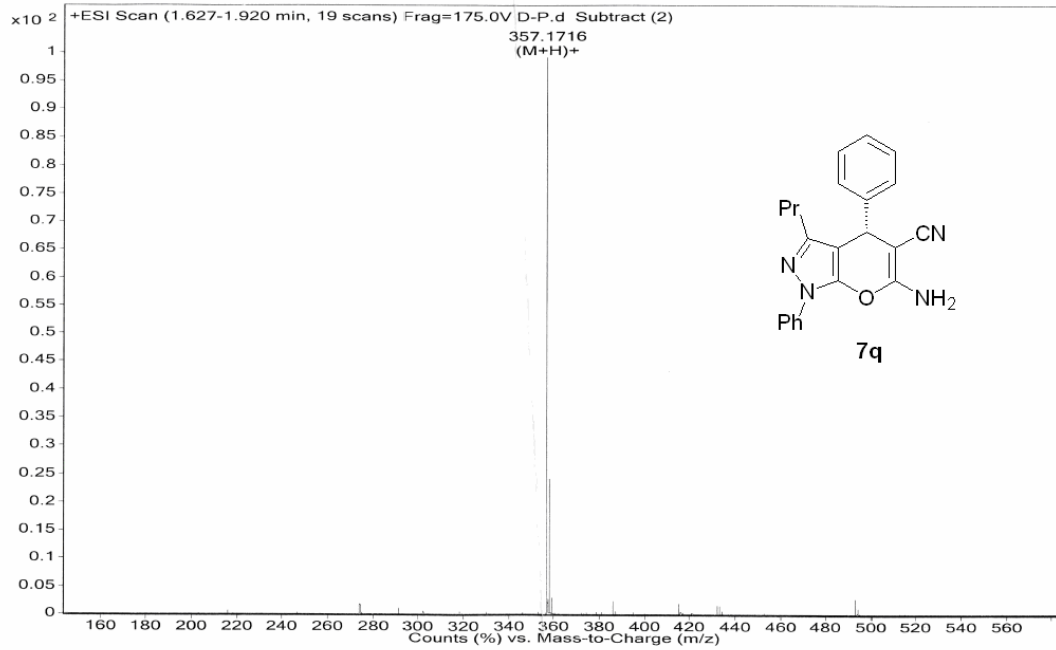
Mode: Positive
Scans: 1
Date: 24-MAY-2013
Time: 15:12:32
Scale: 25.0612



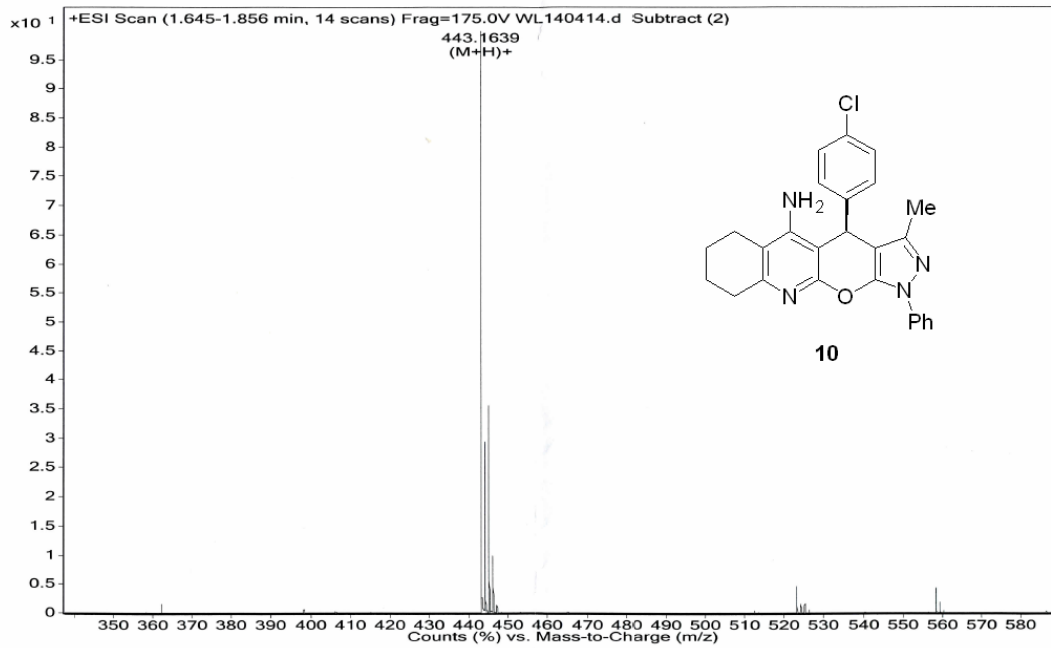




Sample Name	lc/ms	Position	P1-A3	Instrument Name	Instrument 1	User Name	
Inj Vol	3	InjPosition		SampleType	Sample	IRM Calibration Status	Some Ions Missed
Data Filename	D-P.d	ACQ Method	chen-ms.m	Comment		Acquired Time	6/17/2013 11:34:15 AM



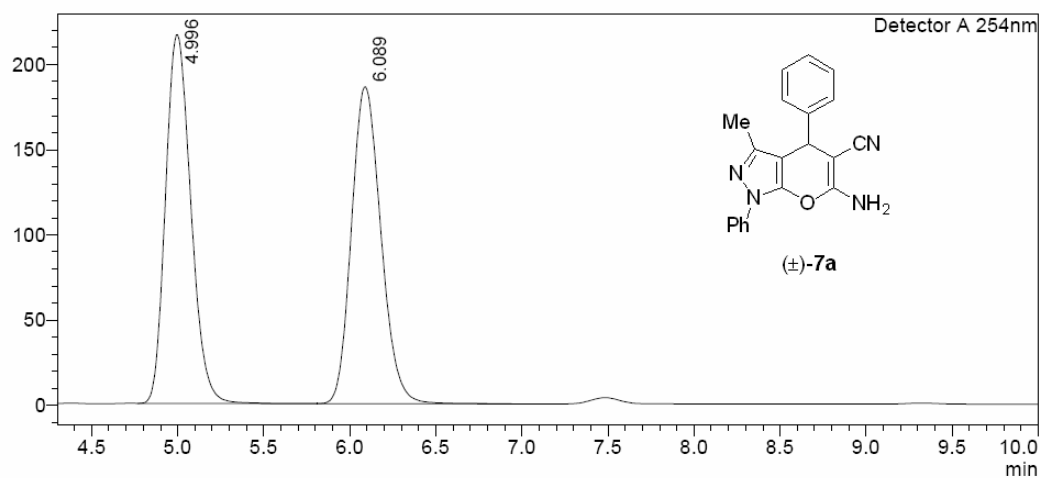
Sample Name	lc/ms	Position	P1-A4	Instrument Name	Instrument 1	User Name	
Inj Vol	-1	InjPosition		SampleType	Sample	IRM Calibration Status	Some Ions Missed
Data Filename	WL140414.d	ACQ Method	chen-ms.m	Comment		Acquired Time	4/17/2015 9:46:56 AM



3. Copies of HPLC data

<Chromatogram>

mV

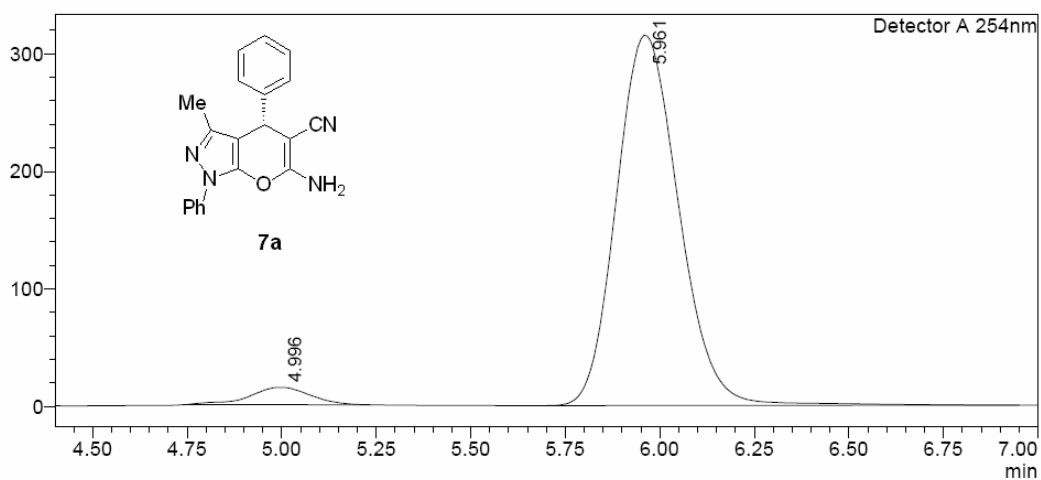


<Peak Table>

Detector A 254nm					
Peak#	Ret. Time	Area	Height	Height%	Area%
1	4.996	2218565	216367	53.760	49.977
2	6.089	2220565	186101	46.240	50.023
Total		4439129	402468	100.000	100.000

<Chromatogram>

mV

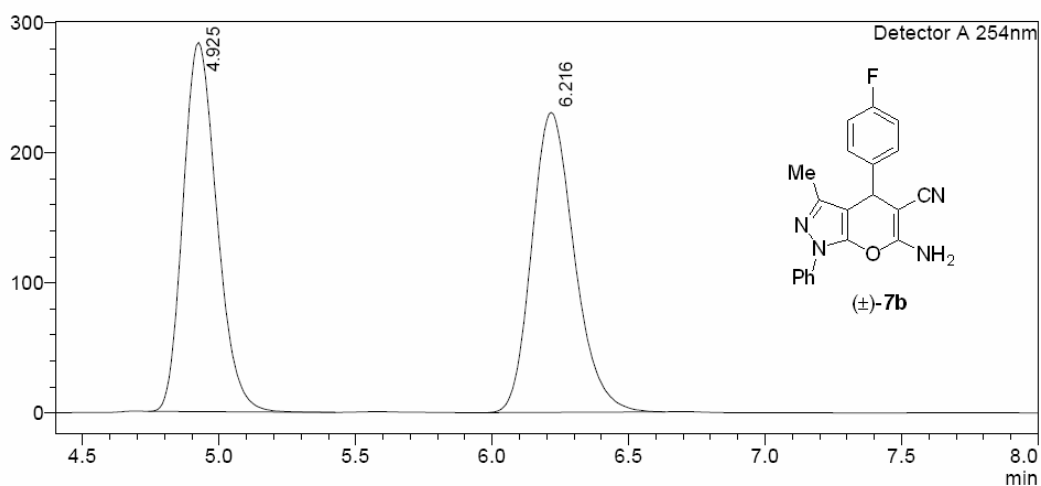


<Peak Table>

Detector A 254nm					
Peak#	Ret. Time	Area	Height	Height%	Area%
1	4.996	162201	14682	4.456	4.286
2	5.961	3622606	314788	95.544	95.714
Total		3784807	329470	100.000	100.000

<Chromatogram>

mV



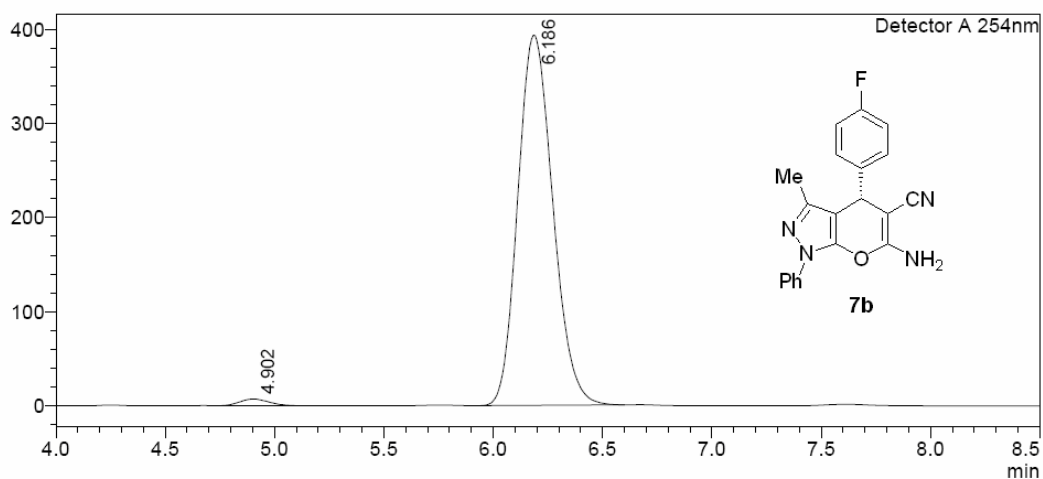
<Peak Table>

Detector A 254nm

Peak#	Ret. Time	Area	Height	Height%	Area%
1	4.925	2446516	283771	55.165	49.406
2	6.216	2505358	230637	44.835	50.594
Total		4951874	514408	100.000	100.000

<Chromatogram>

mV



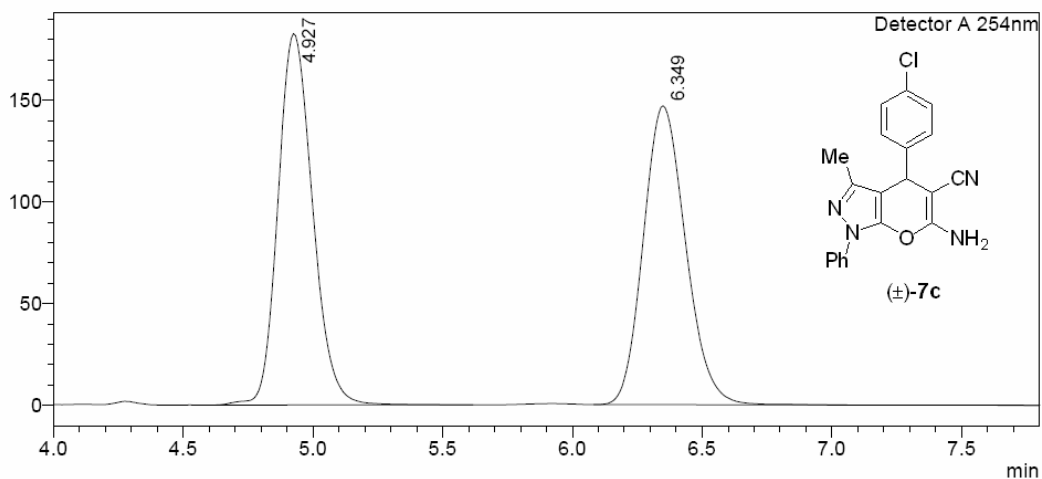
<Peak Table>

Detector A 254nm

Peak#	Ret. Time	Area	Height	Height%	Area%
1	4.902	64568	7013	1.751	1.450
2	6.186	4388776	393515	98.249	98.550
Total		4453343	400529	100.000	100.000

<Chromatogram>

mV

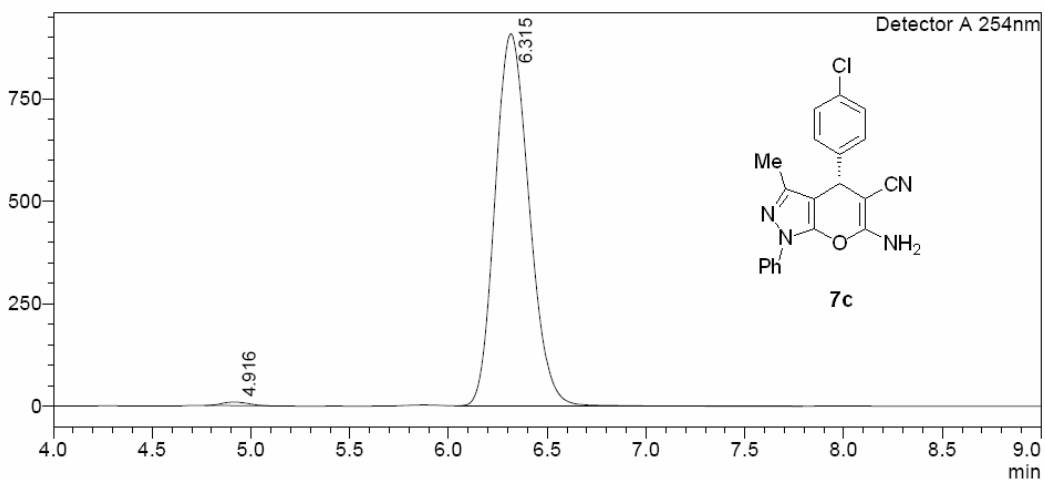


<Peak Table>

Detector A 254nm						
Peak#	Ret. Time	Conc.	Area/Height	Height%	Area%	
1	4.927	50.419	9.289	55.405	50.419	
2	6.349	49.581	11.349	44.595	49.581	
Total				100.000	100.000	

<Chromatogram>

mV

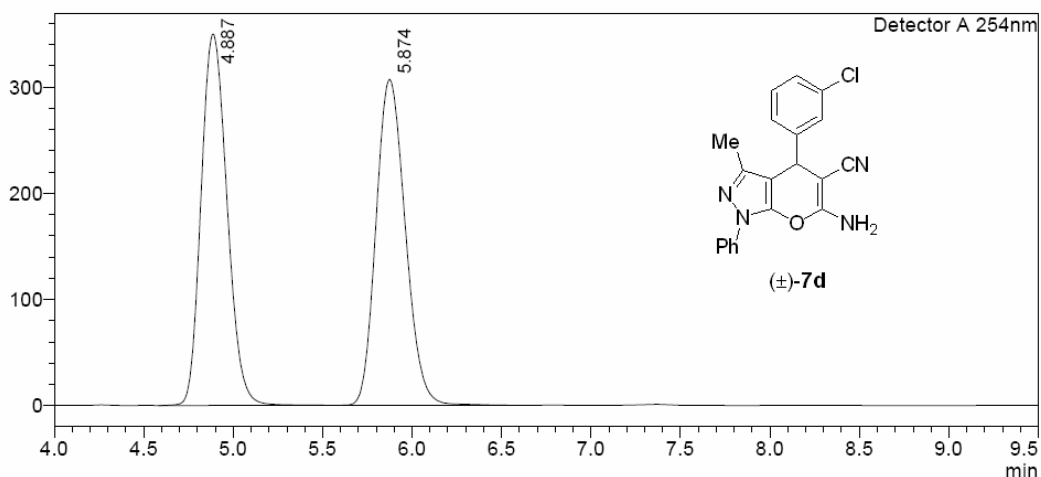


<Peak Table>

Detector A 254nm						
Peak#	Ret. Time	Area	Height	Conc.	Height%	Area%
1	4.916	79824	8600	0.728	0.938	0.728
2	6.315	10880117	907991	99.272	99.062	99.272
Total		10959941	916591		100.000	100.000

<Chromatogram>

mV



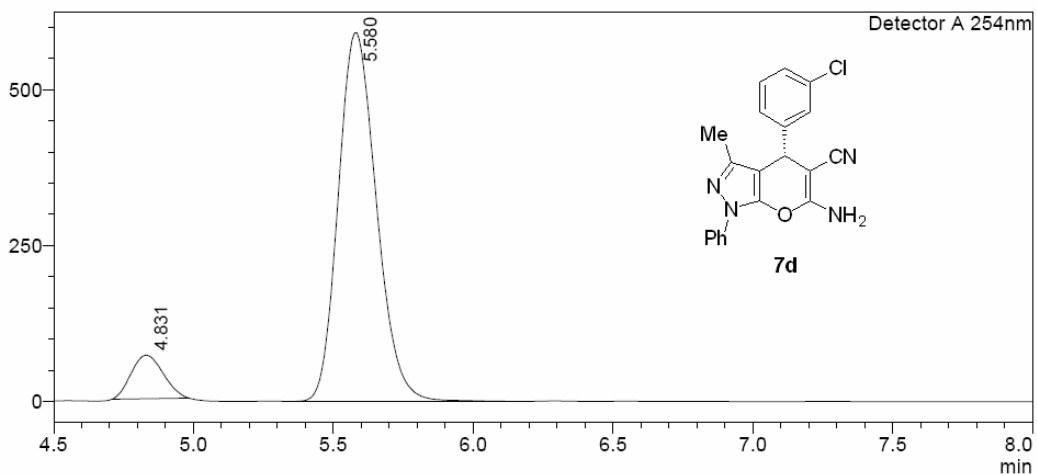
<Peak Table>

Detector A 254nm

Peak#	Ret. Time	Area	Height	Height%	Area%
1	4.887	3523325	349196	53.220	50.186
2	5.874	3497198	306946	46.780	49.814
Total		7020523	656142	100.000	100.000

<Chromatogram>

mV



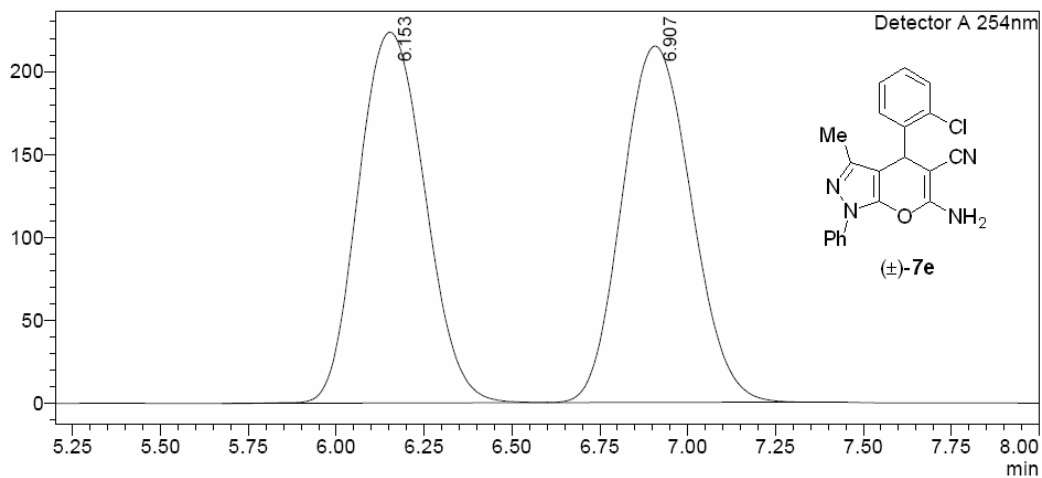
<Peak Table>

Detector A 254nm

Peak#	Ret. Time	Area	Height	Height%	Area%
1	4.831	555600	69806	10.571	9.012
2	5.580	5609729	590520	89.429	90.988
Total		6165328	660325	100.000	100.000

<Chromatogram>

mV

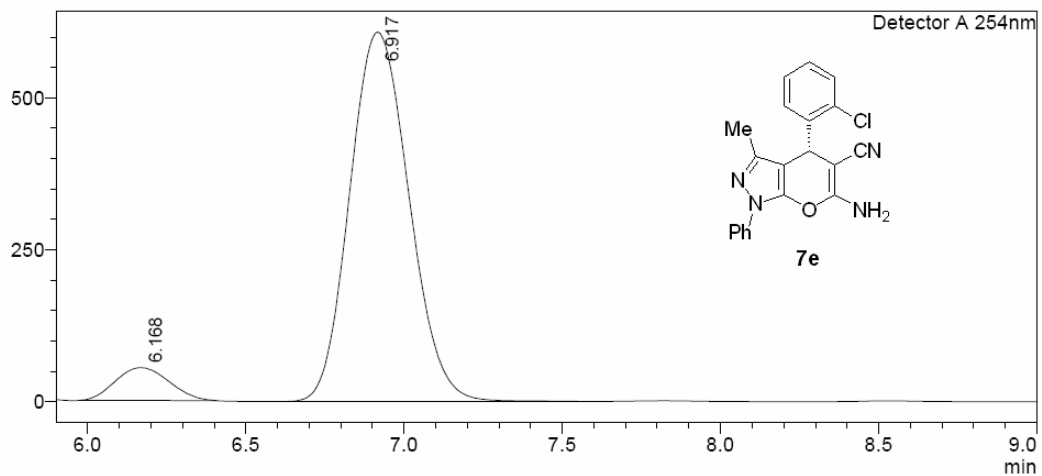


<Peak Table>

Detector A 254nm					
Peak#	Ret. Time	Area	Height	Height%	Area%
1	6.153	2945122	223426	50.988	49.921
2	6.907	2954392	214767	49.012	50.079
Total		5899514	438193	100.000	100.000

<Chromatogram>

mV

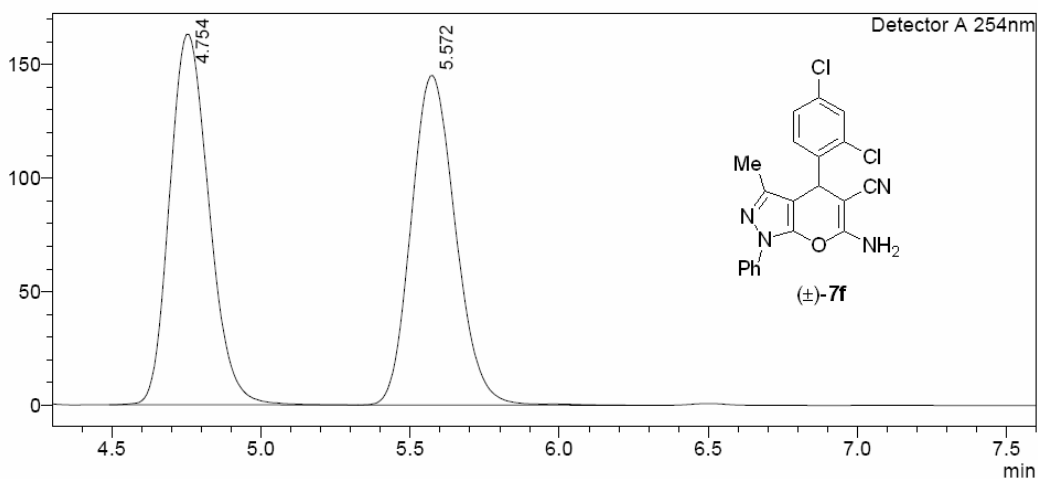


<Peak Table>

Detector A 254nm					
Peak#	Ret. Time	Area	Height	Height%	Area%
1	6.168	638818	54120	8.177	7.460
2	6.917	7924180	607766	91.823	92.540
Total		8562998	661886	100.000	100.000

<Chromatogram>

mV



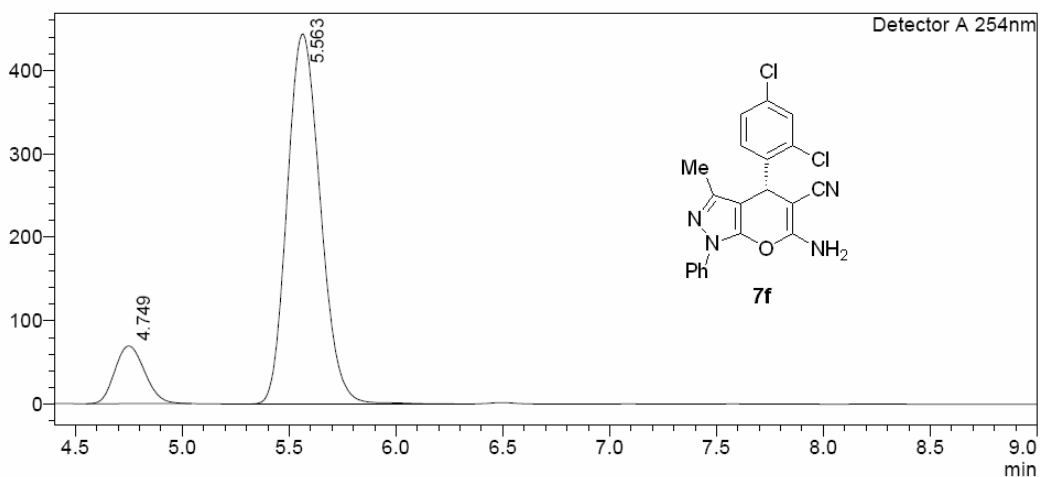
<Peak Table>

Detector A 254nm

Peak#	Ret. Time	Area	Height	Height%	Area%
1	4.754	1503065	162993	52.905	50.044
2	5.572	1500431	145095	47.095	49.956
Total		3003497	308089	100.000	100.000

<Chromatogram>

mV



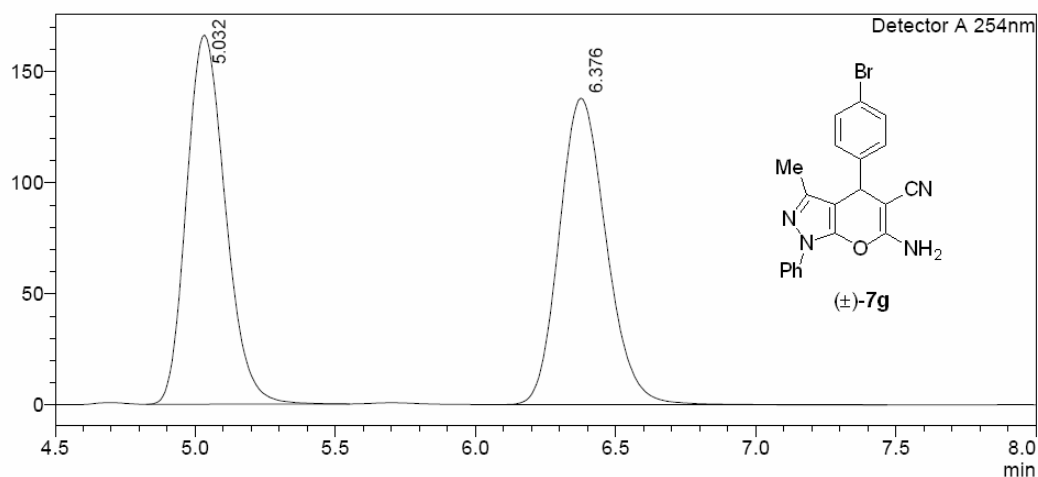
<Peak Table>

Detector A 254nm

Peak#	Ret. Time	Area	Height	Height%	Area%
1	4.749	669937	69064	13.489	12.268
2	5.563	4790785	442925	86.511	87.732
Total		5460722	511990	100.000	100.000

<Chromatogram>

mV



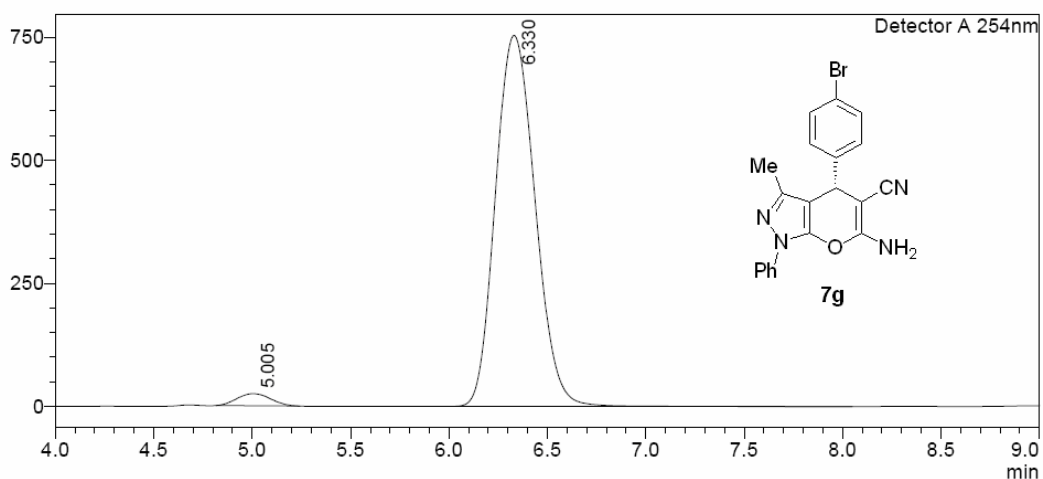
<Peak Table>

Detector A 254nm

Peak#	Ret. Time	Area	Height	Height%	Area%
1	5.032	1606230	166140	54.632	49.893
2	6.376	1613117	137969	45.368	50.107
Total		3219346	304109	100.000	100.000

<Chromatogram>

mV



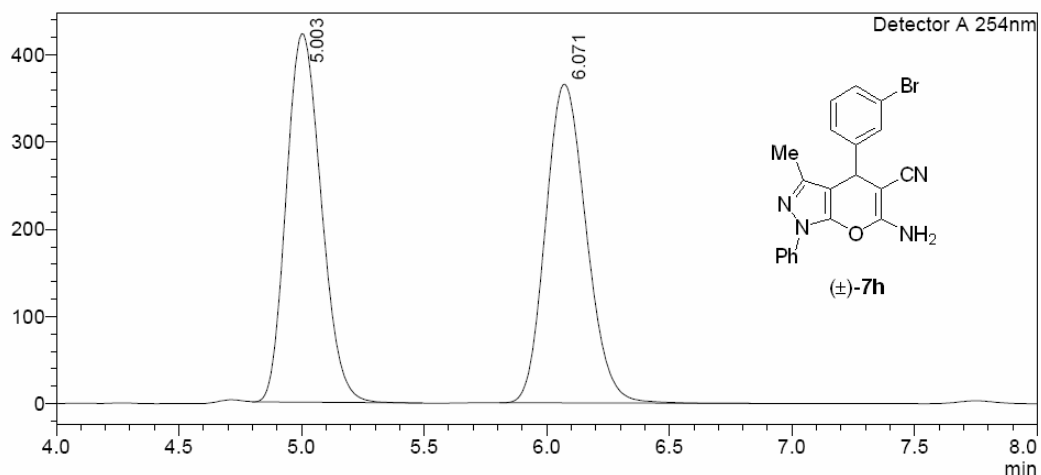
<Peak Table>

Detector A 254nm

Peak#	Ret. Time	Area	Height	Height%	Area%
1	5.005	290322	24500	3.150	2.676
2	6.330	10559422	753205	96.850	97.324
Total		10849744	777705	100.000	100.000

<Chromatogram>

mV

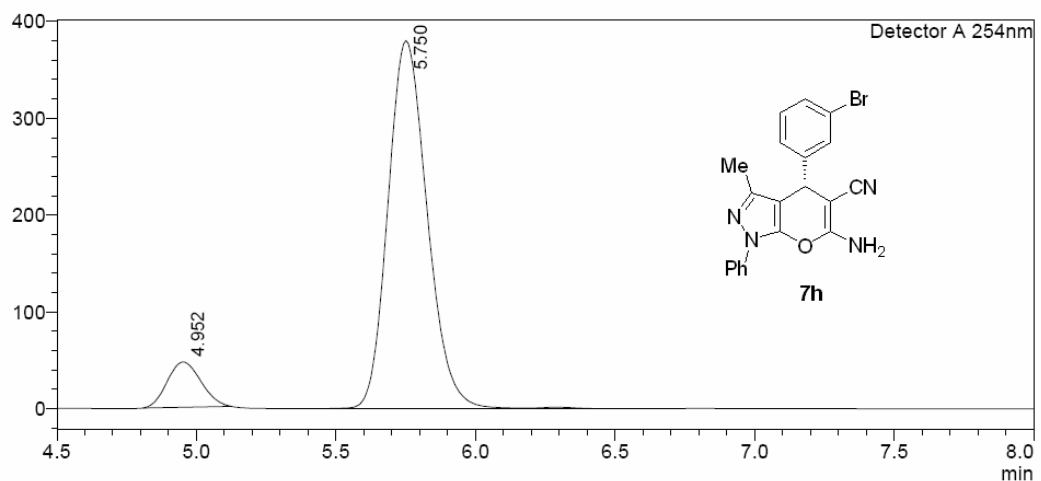


<Peak Table>

Detector A 254nm						
Peak#	Ret. Time	Conc.	Height	Area	Height%	Area%
1	5.003	49.840	421993	4199374	53.598	49.840
2	6.071	50.160	365342	4226311	46.402	50.160
Total			787335	8425685	100.000	100.000

<Chromatogram>

mV

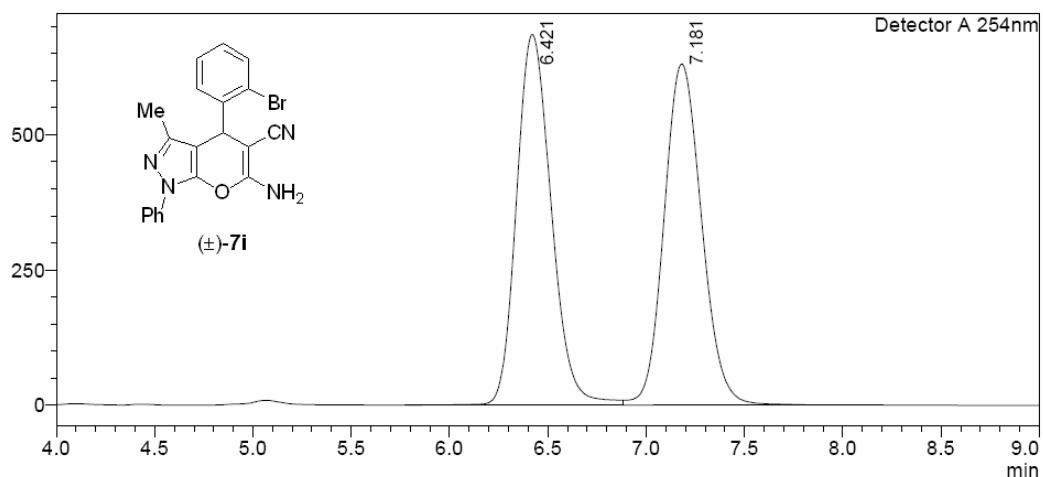


<Peak Table>

Detector A 254nm					
Peak#	Ret. Time	Area	Height	Height%	Area%
1	4.952	392318	46735	10.935	9.457
2	5.750	3755985	380648	89.065	90.543
Total		4148303	427383	100.000	100.000

<Chromatogram>

mV

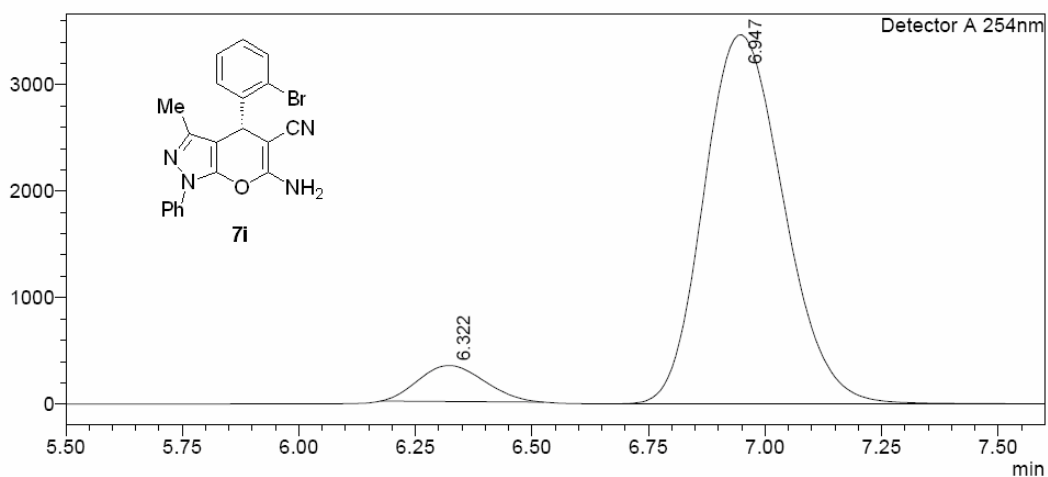


<Peak Table>

Detector A 254nm						
Peak#	Ret. Time	Conc.	Height	Area	Height%	Area%
1	6.421	50.217	683980	8421993	52.067	50.217
2	7.181	49.783	629682	8349290	47.933	49.783
Total			1313662	16771283	100.000	100.000

<Chromatogram>

mV

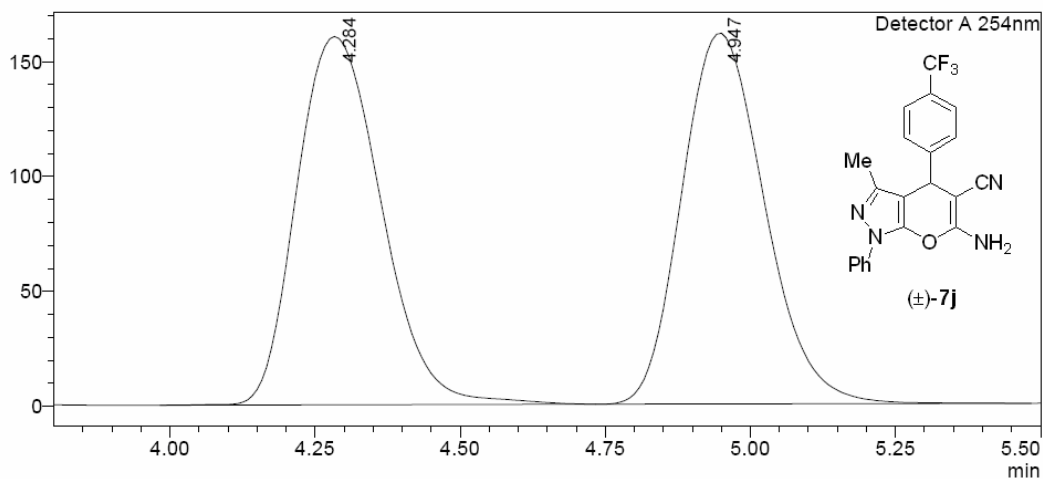


<Peak Table>

Detector A 254nm					
Peak#	Ret. Time	Area	Height	Height%	Area%
1	6.322	3352349	338840	8.904	7.519
2	6.947	41235262	3466734	91.096	92.481
Total		44587612	3805574	100.000	100.000

<Chromatogram>

mV

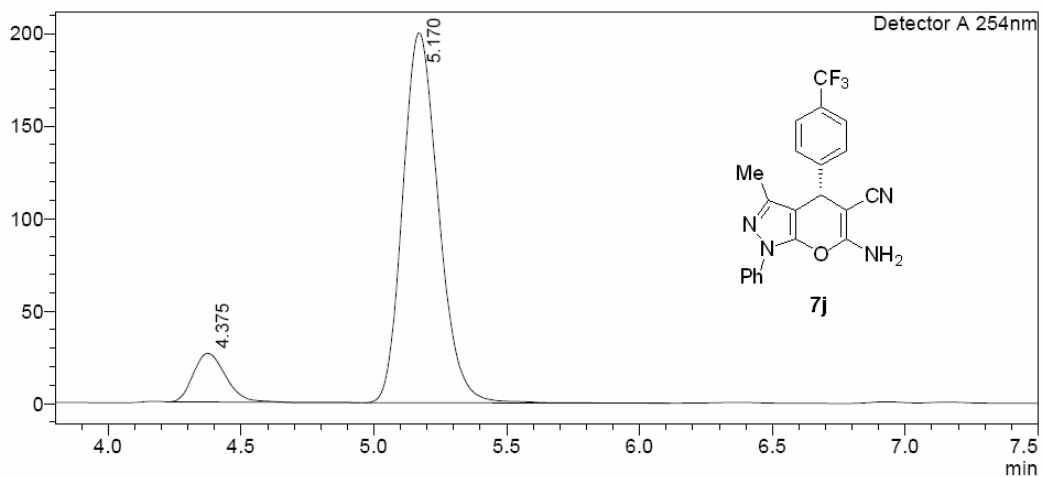


<Peak Table>

Detector A 254nm					
Peak#	Ret. Time	Area	Height	Height%	Area%
1	4.284	1625373	160332	49.842	50.316
2	4.947	1604985	161348	50.158	49.684
Total		3230358	321680	100.000	100.000

<Chromatogram>

mV

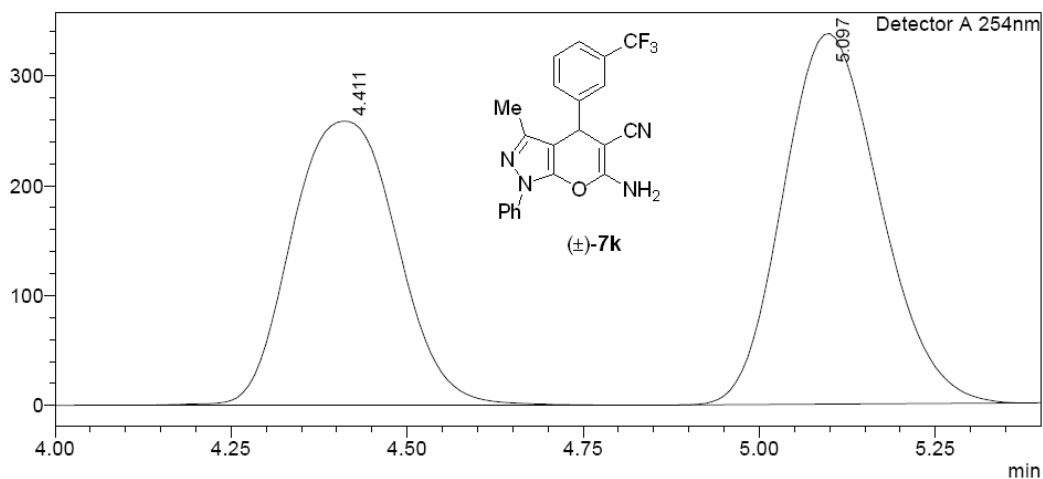


<Peak Table>

Detector A 254nm					
Peak#	Ret. Time	Area	Height	Area%	Height%
1	4.375	224324	26274	10.687	11.624
2	5.170	1874779	199762	89.313	88.376
Total		2099103	226036	100.000	100.000

<Chromatogram>

mV



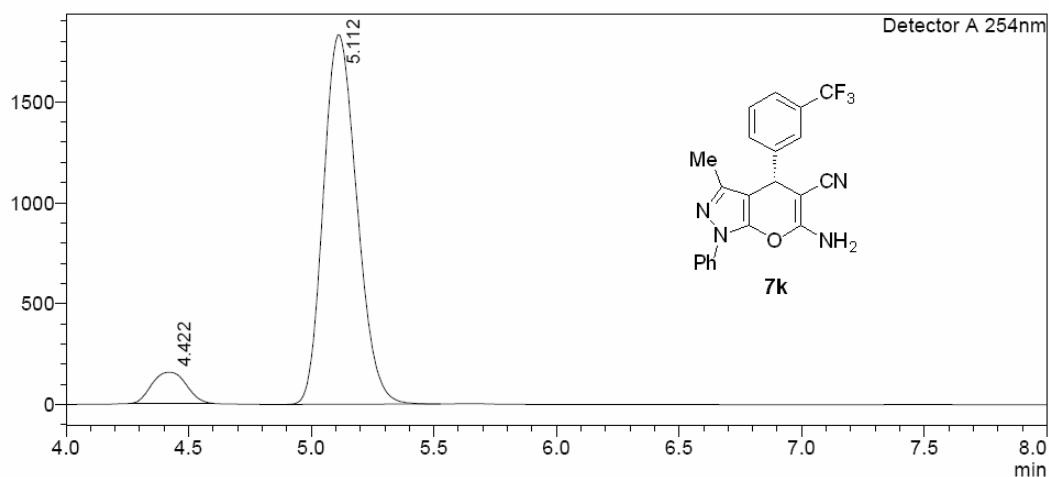
<Peak Table>

Detector A 254nm

Peak#	Ret. Time	Area	Height	Height%	Area%
1	4.411	2687069	258525	43.379	45.410
2	5.097	3230289	337447	56.621	54.590
Total		5917357	595972	100.000	100.000

<Chromatogram>

mV



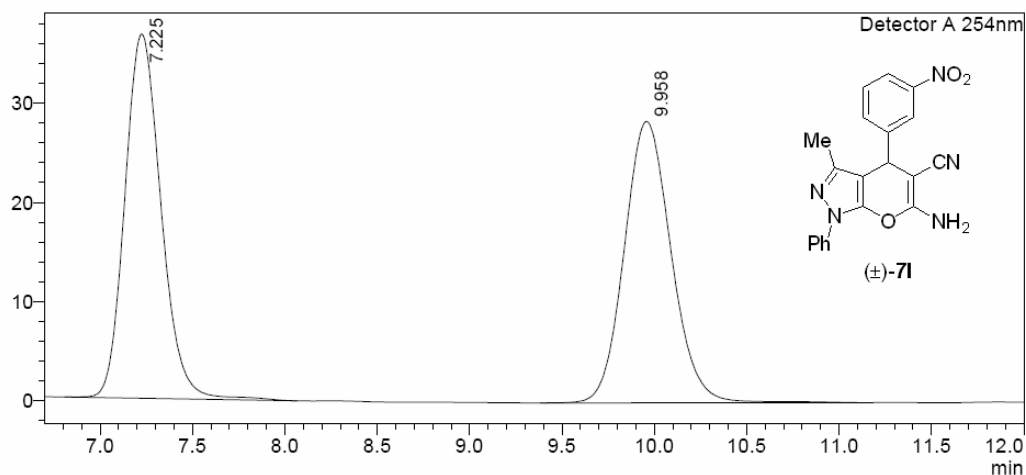
<Peak Table>

Detector A 254nm

Peak#	Ret. Time	Area	Height	Height%	Area%
1	4.422	1495302	154036	7.764	7.887
2	5.112	17462984	1829863	92.236	92.113
Total		18958286	1983899	100.000	100.000

<Chromatogram>

mV



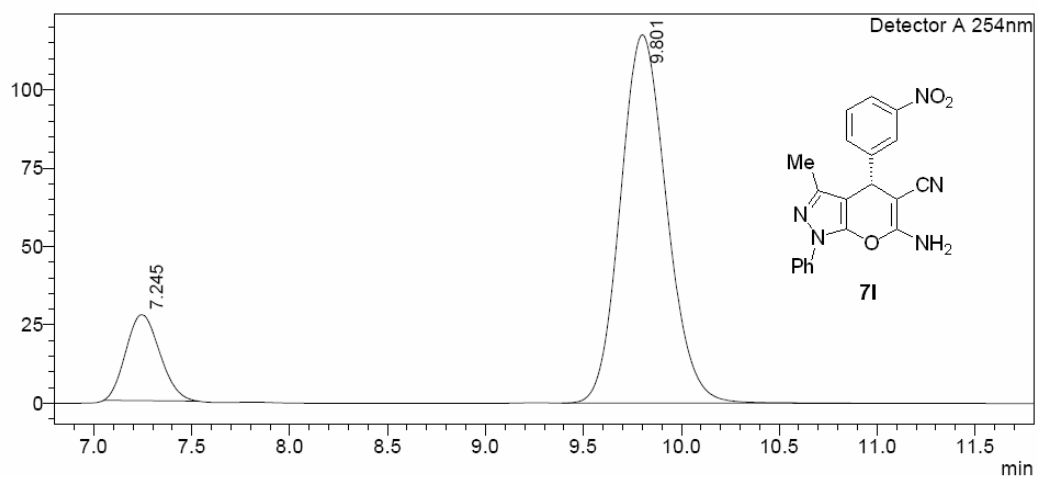
<Peak Table>

Detector A 254nm

Peak#	Ret. Time	Area	Height	Height%	Area%
1	7.225	501370	36734	56.427	50.000
2	9.958	501364	28366	43.573	50.000
Total		1002734	65100	100.000	100.000

<Chromatogram>

mV



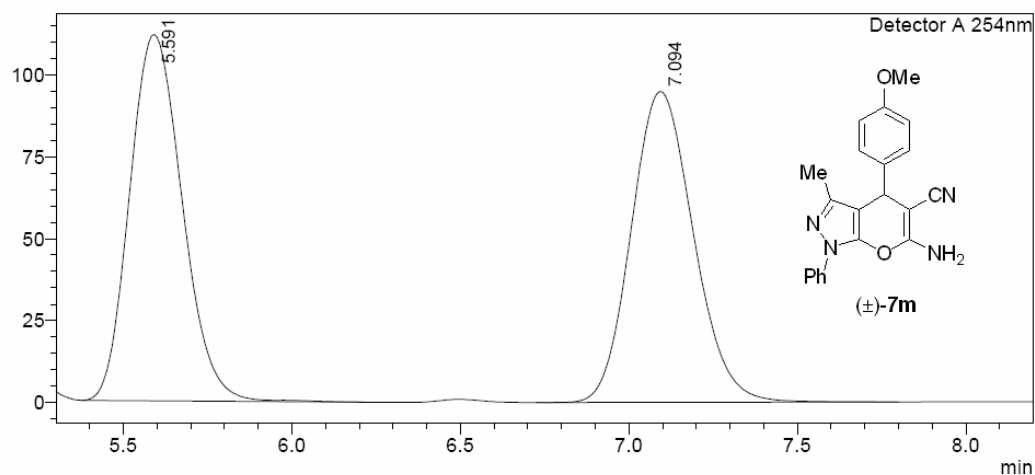
<Peak Table>

Detector A 254nm

Peak#	Ret. Time	Area	Height	Height%	Area%
1	7.245	331265	27400	18.913	14.637
2	9.801	1931906	117473	81.087	85.363
Total		2263171	144873	100.000	100.000

<Chromatogram>

mV

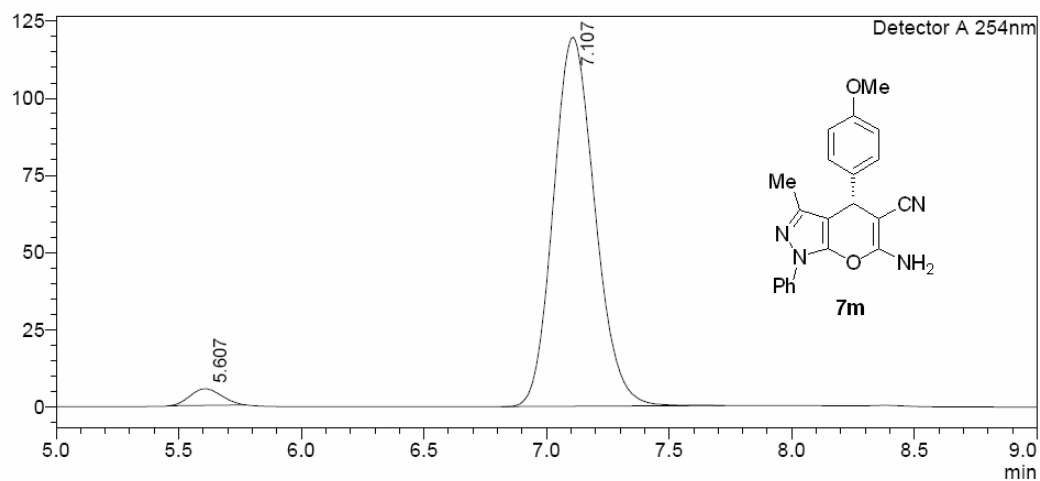


<Peak Table>

Detector A 254nm					
Peak#	Ret. Time	Area	Height	Height%	Area%
1	5.591	1214730	111866	54.100	49.945
2	7.094	1217400	94911	45.900	50.055
Total		2432130	206777	100.000	100.000

<Chromatogram>

mV

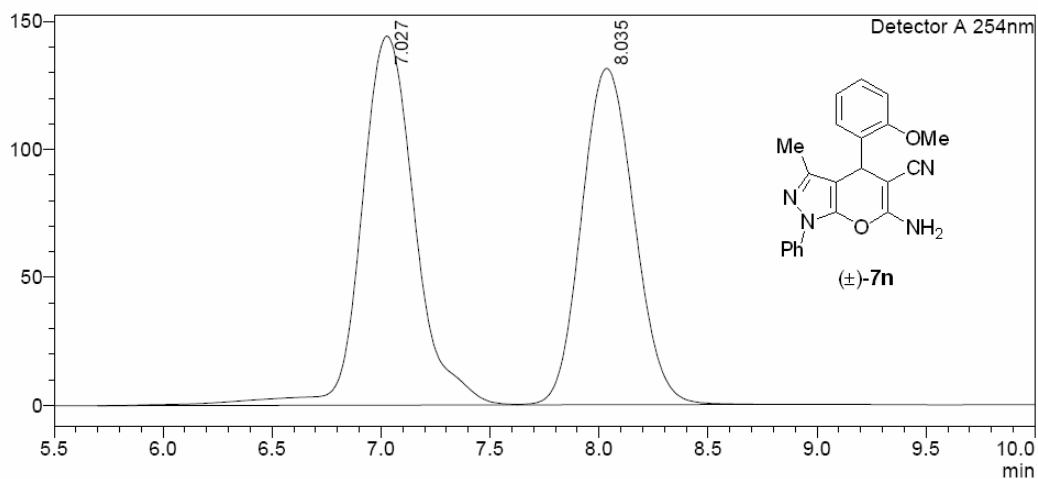


<Peak Table>

Detector A 254nm					
Peak#	Ret. Time	Area	Height	Height%	Area%
1	5.607	48480	5425	4.337	3.319
2	7.107	1412055	119664	95.663	96.681
Total		1460535	125088	100.000	100.000

<Chromatogram>

mV



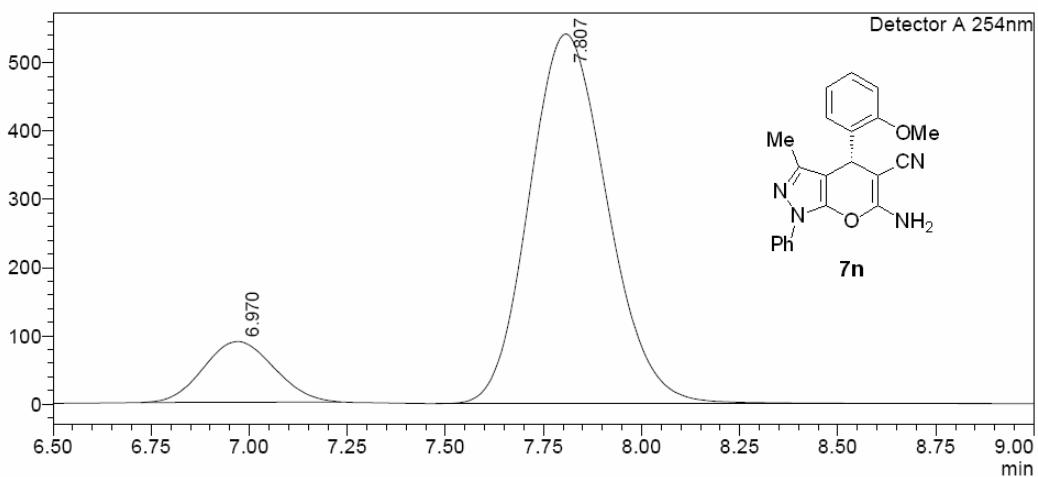
<Peak Table>

Detector A 254nm

Peak#	Ret. Time	Area	Height	Height%	Area%
1	7.027	2455546	144130	52.312	52.601
2	8.035	2212680	131388	47.688	47.399
Total		4668226	275518	100.000	100.000

<Chromatogram>

mV



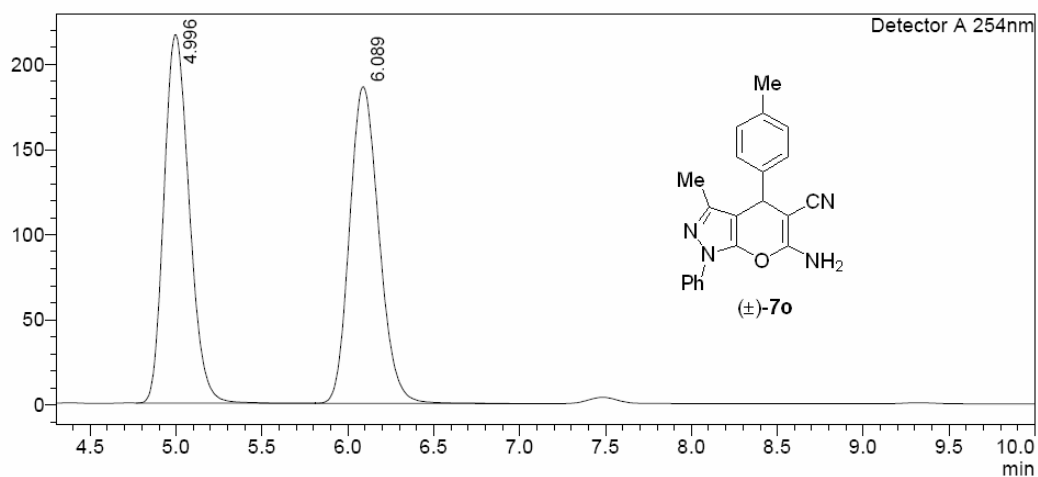
<Peak Table>

Detector A 254nm

Peak#	Ret. Time	Area	Height	Height%	Area%
1	6.970	1108892	88691	14.077	12.882
2	7.807	7499003	541337	85.923	87.118
Total		8607895	630028	100.000	100.000

<Chromatogram>

mV



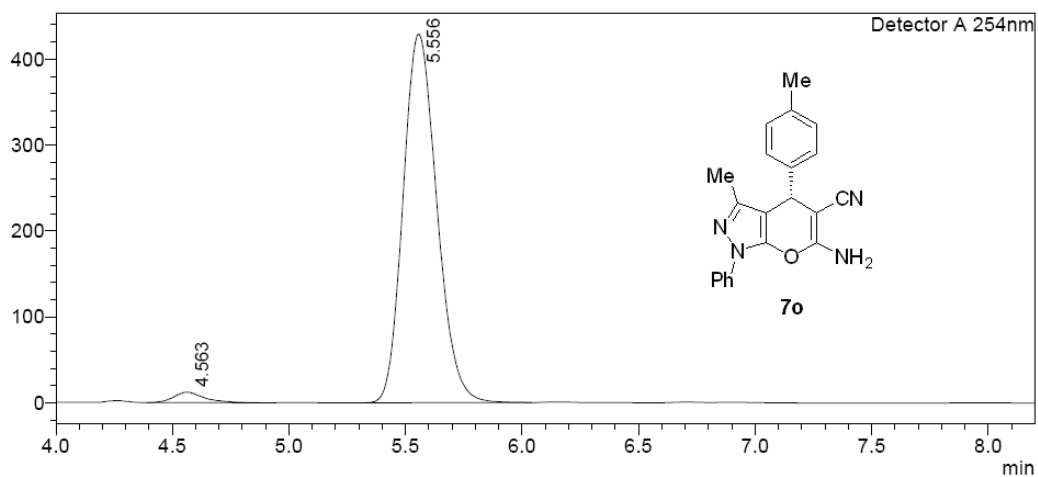
<Peak Table>

Detector A 254nm

Peak#	Ret. Time	Area	Height	Height%	Area%
1	4.996	2218565	216367	53.760	49.977
2	6.089	2220565	186101	46.240	50.023
Total		4439129	402468	100.000	100.000

<Chromatogram>

mV



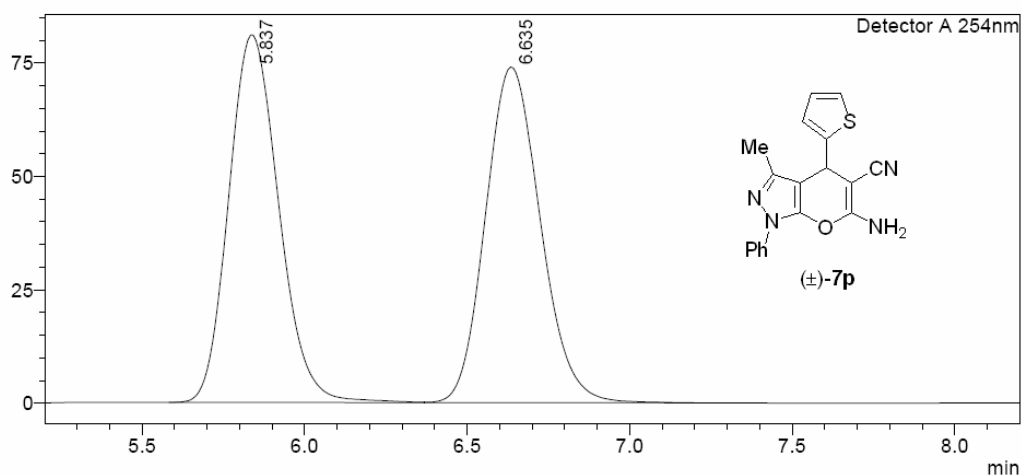
<Peak Table>

Detector A 254nm

Peak#	Ret. Time	Area	Height	Height%	Area%
1	4.563	110469	11950	2.710	2.493
2	5.556	4321216	429080	97.290	97.507
Total		4431684	441030	100.000	100.000

<Chromatogram>

mV



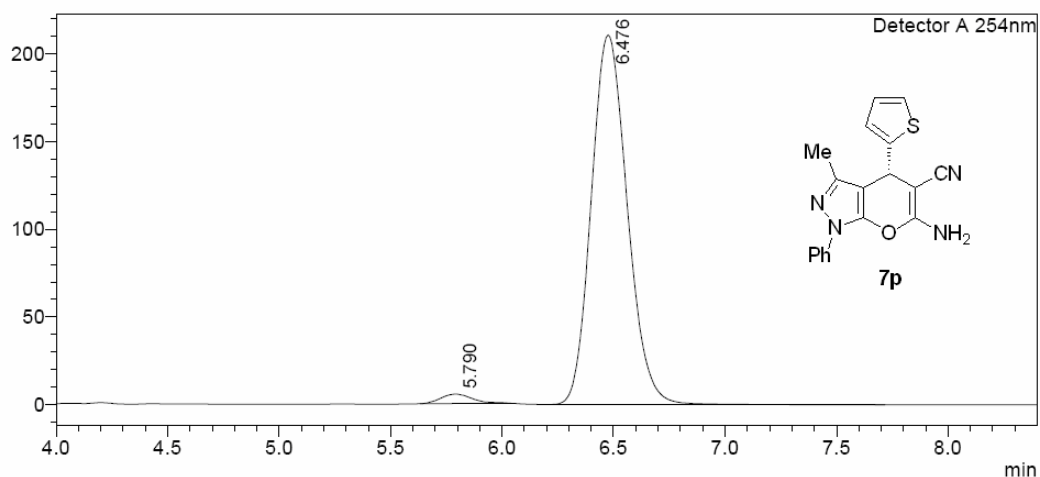
<Peak Table>

Detector A 254nm

Peak#	Ret. Time	Area	Height	Height%	Area%
1	5.837	868317	80923	52.238	49.957
2	6.635	869795	73988	47.762	50.043
Total		1738112	154911	100.000	100.000

<Chromatogram>

mV



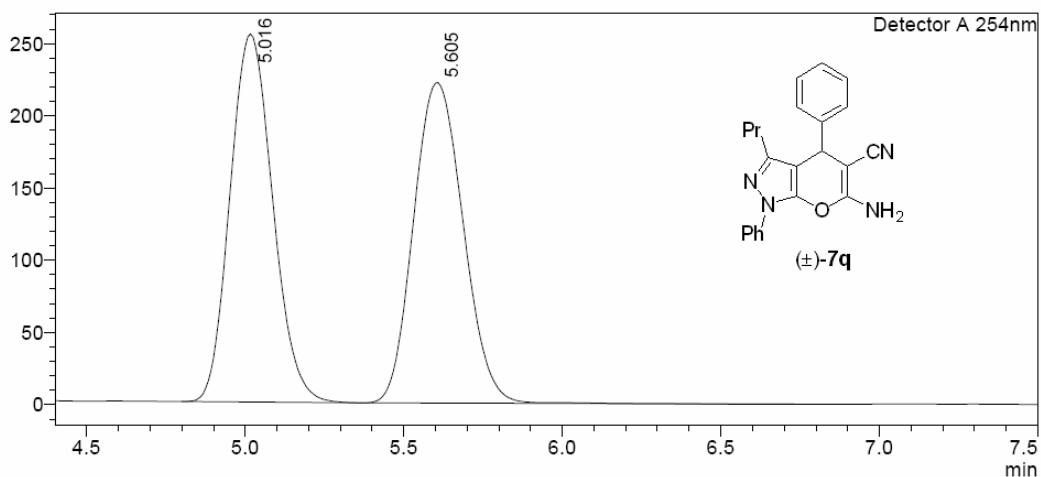
<Peak Table>

Detector A 254nm

Peak#	Ret. Time	Area	Height	Height%	Area%
1	5.790	53587	5350	2.477	2.215
2	6.476	2366003	210605	97.523	97.785
Total		2419590	215954	100.000	100.000

<Chromatogram>

mV



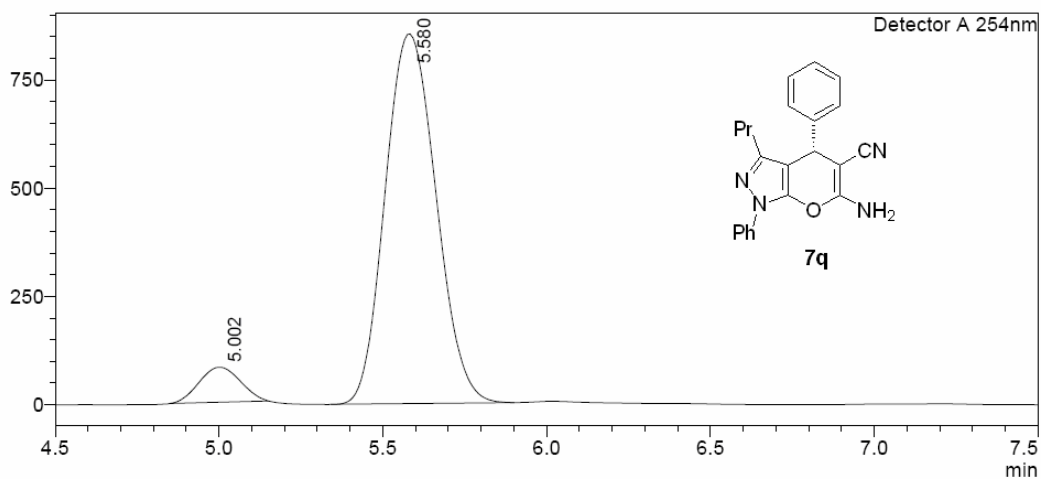
<Peak Table>

Detector A 254nm

Peak#	Ret. Time	Area	Height	Height%	Area%
1	5.016	2389151	254873	53.460	49.709
2	5.605	2417125	221879	46.540	50.291
Total		4806276	476752	100.000	100.000

<Chromatogram>

mV

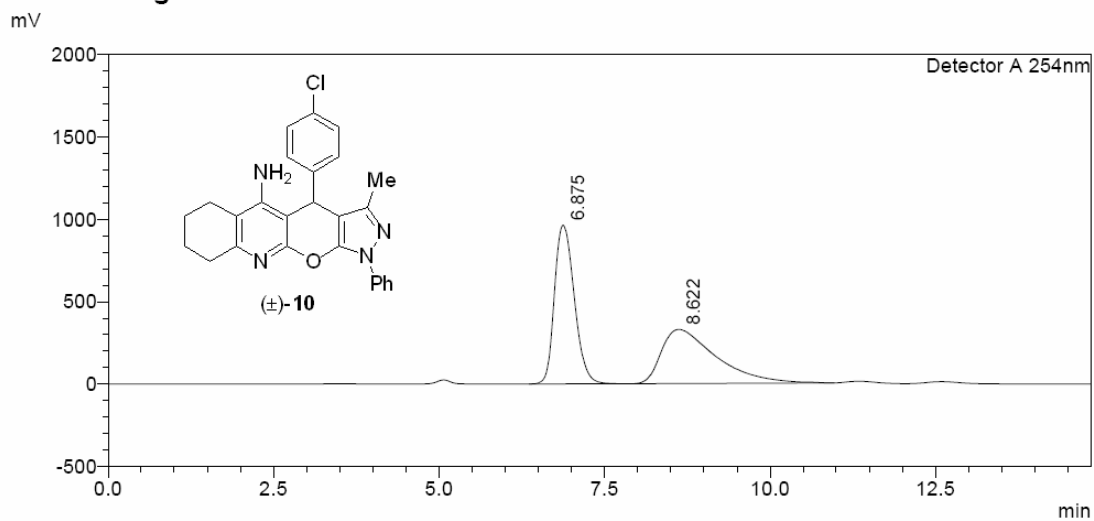


<Peak Table>

Detector A 254nm

Peak#	Ret. Time	Area	Height	Height%	Area%
1	5.002	707003	80796	8.647	7.111
2	5.580	9235767	853560	91.353	92.889
Total		9942770	934355	100.000	100.000

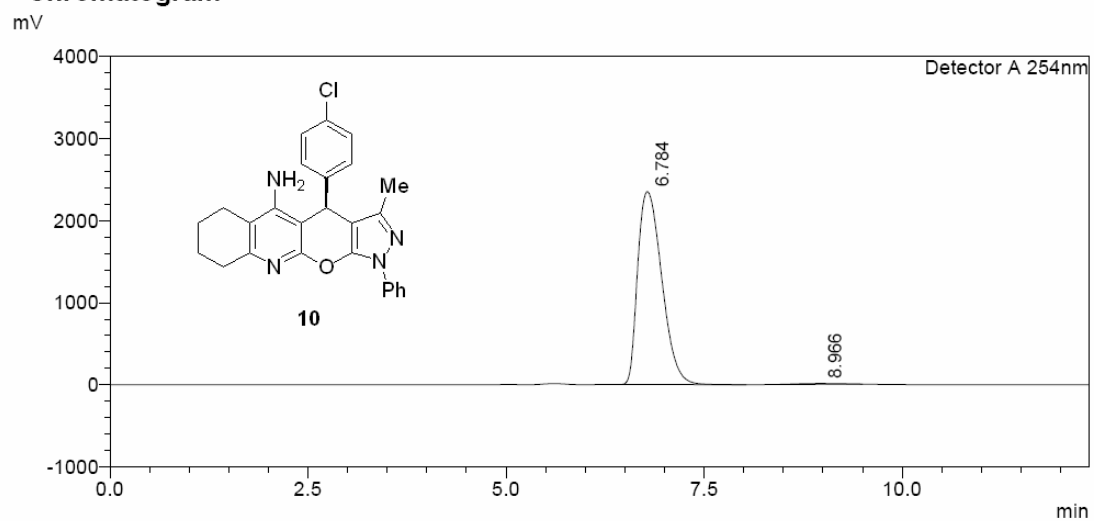
<Chromatogram>



<Peak Table>

Detector A 254nm						
Peak#	Ret. Time	Area	Height	Conc.	Height%	Area%
1	6.875	20086836	962995	51.547	74.530	51.547
2	8.622	18881130	329093	48.453	25.470	48.453
Total		38967966	1292088		100.000	100.000

<Chromatogram>



<Peak Table>

Detector A 254nm						
Peak#	Ret. Time	Area	Height	Conc.	Height%	Area%
1	6.784	49790827	2352420	99.329	99.627	99.329
2	8.966	336562	8797	0.671	0.373	0.671
Total		50127389	2361217		100.000	100.000