

Supplementary data

A multifunctional molecular entity Cu^{II}-Sn^{IV} heterobimetallic complex as potential cancer chemotherapeutic agents: DNA binding/cleavage, SOD mimetic, topoisomerase I α inhibitory and in vitro cytotoxic activities

Sartaj Tabassum,^{a*} Ahmad Asim,^a Rais Ahmad Khan,^{a,b} Farukh Arjmand,^a Rajakumar Divya,^c Perumalsamy Balaji,^c and Mohammad Abdulkader Akbarsha.^d

^{a*}Department of Chemistry, Aligarh Muslim University, Aligarh-202002, India.

Email: tsartaj62@yahoo.com

^bDepartment of Chemistry, King Saud University, Riyadh, 11451, KSA.

^cDepartment of Biomedical Science, Bharathidasan University, Tiruchirappalli 620 024, India.

^dMahatma Gandhi-Doerenkamp Center (MGDC) for Alternatives to Use of Animals in Life Science Education, Bharathidasan University, Tiruchirappalli - 620 024, India.

Figures.

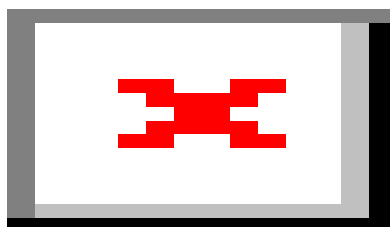
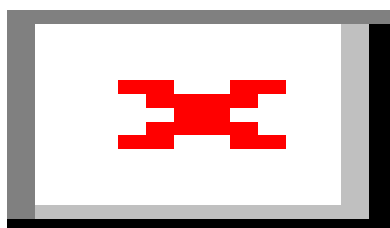


Figure S1. EPR spectra of complex 1 and 3 in DMSO at LNT

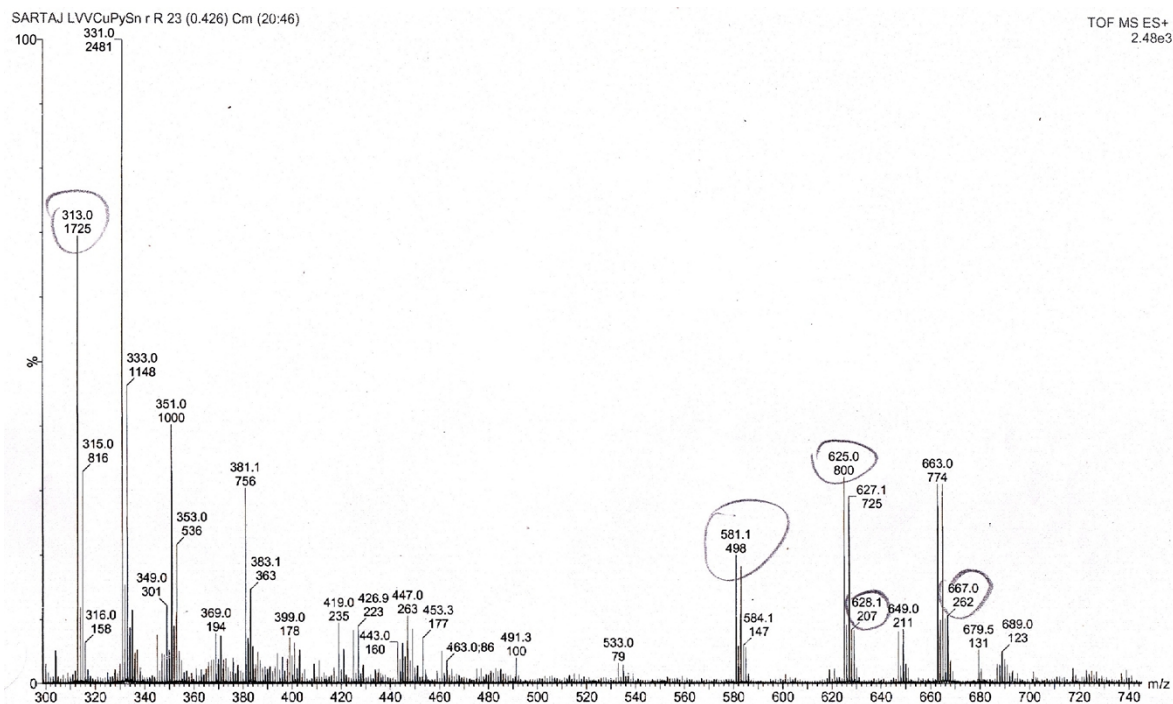


Fig. S2. ESI MS spectrum for complex 3.

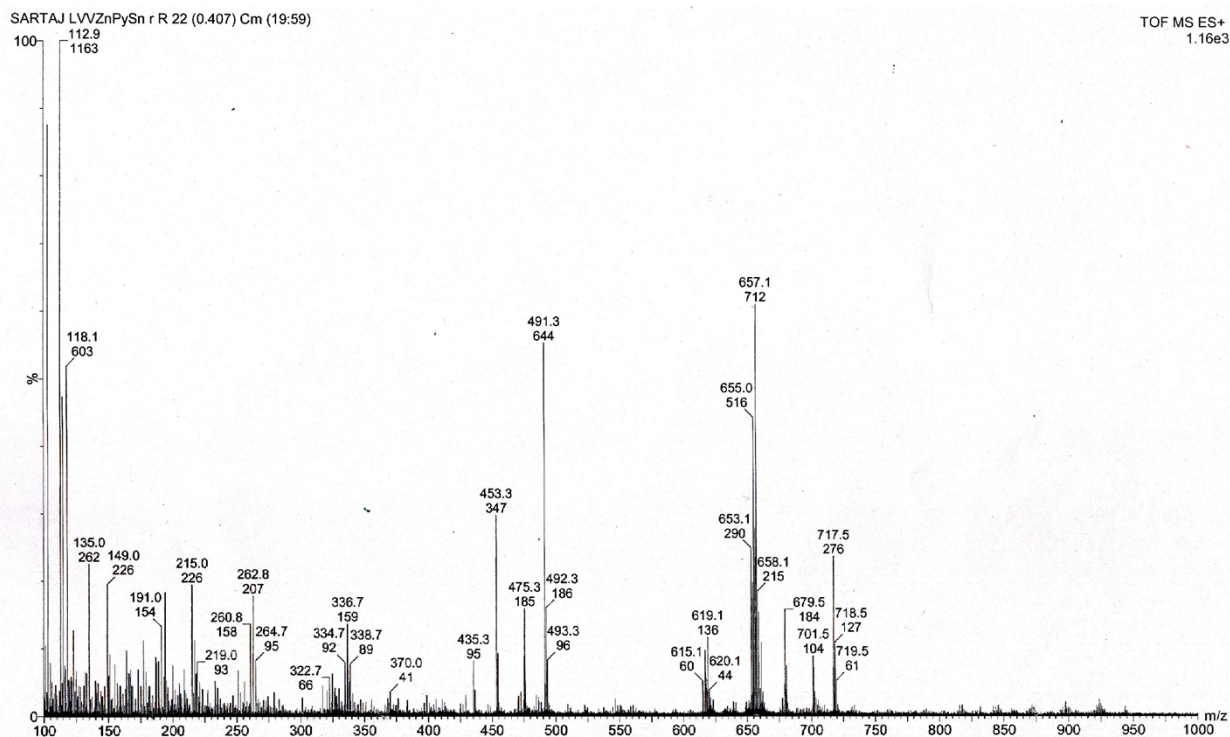


Fig. S3. ESI MS spectrum for complex 4.



Fig. S4. Absorption spectral traces of (A) complex **1** (B) complex **2** in 5% DMSO/ 5mM Tris HCl-50 mM NaCl buffer at pH 7.2 upon addition of CT DNA.



Fig. S5. Emission spectra of (A) complex **1** (B) complex **2** in the presence of DNA in 5 mM Tris-HCl/50mM NaCl buffer. Arrows show the intensity changes upon increasing concentration of the DNA.



Fig. S6. Emission spectra of EB bound to DNA in the absence and presence of (A) complex **1** and (B) complex **2** in 5 mM Tris-HCl/50 mM NaCl buffer. Arrows show the intensity changes upon increasing concentration of the complexes.