

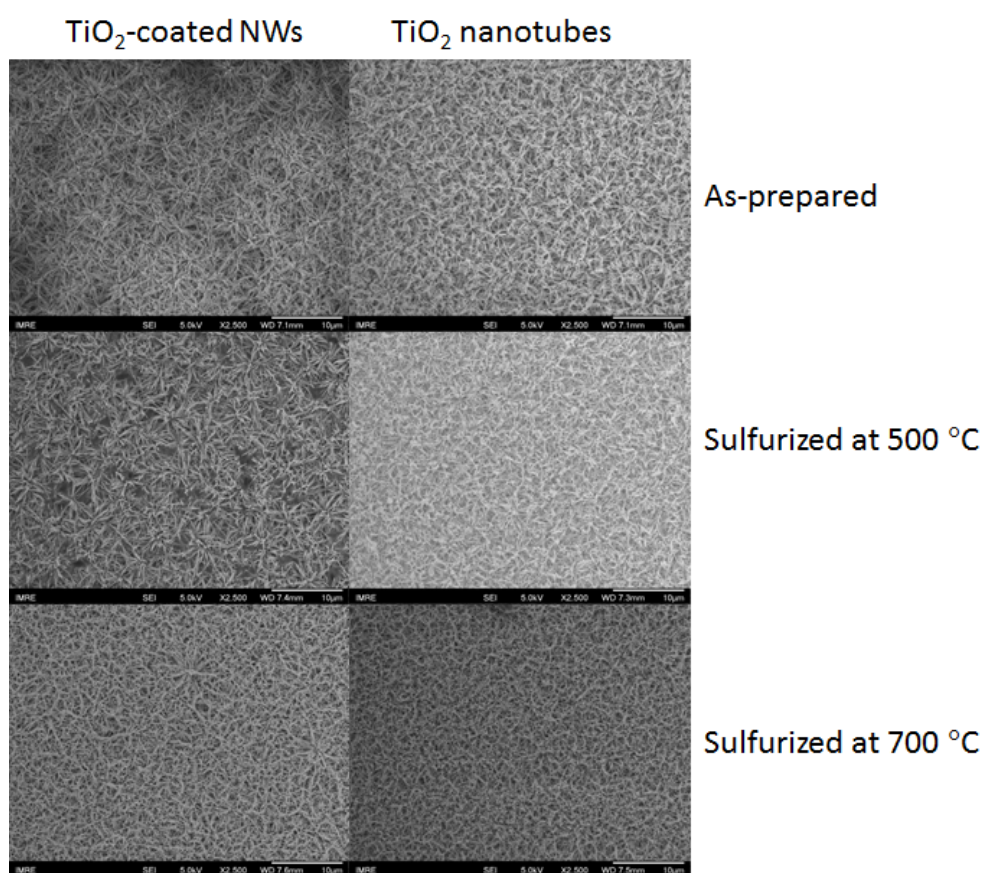
## Supporting Information

### Cobalt sulfide nanoparticles decorated on TiO<sub>2</sub> nanotubes via thermal vapor sulfurization of conformal TiO<sub>2</sub>-coated Co(CO<sub>3</sub>)<sub>0.5</sub>(OH)·0.11H<sub>2</sub>O core-shell nanowires for energy storage applications

H. F. Liu,<sup>1,\*</sup> Y. D. Wang,<sup>2</sup> M. Lin,<sup>1</sup> L. T. Ong,<sup>1</sup> S. Y. Tee<sup>1</sup>, and D. Z. Chi<sup>1</sup>

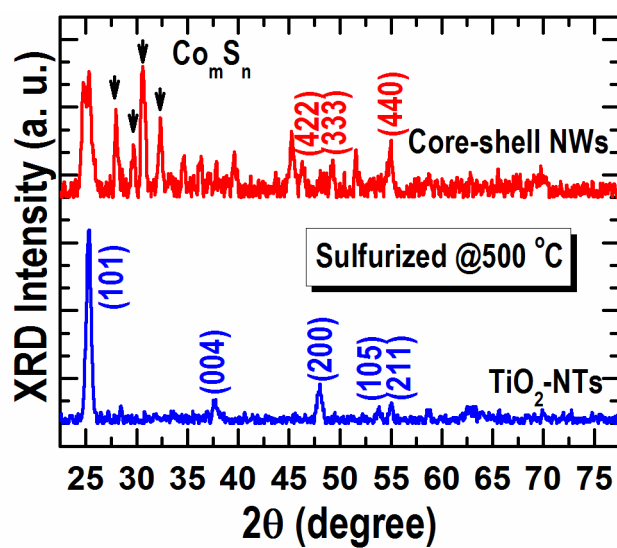
<sup>1</sup>*Institute of Materials Research and Engineering (IMRE), A\*STAR (Agency for Science, Technology and Research), 3 Research Link, Singapore 117602, Singapore*

<sup>2</sup>*School of Engineering, Nanyang Polytechnic, 180 Ang Mo Kio Avenue 8, Singapore 569830, Singapore*

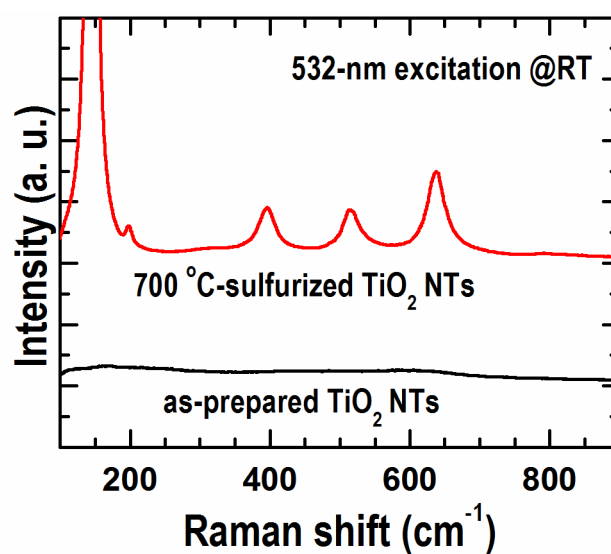


**Fig. S1** SEM image of the Co(CO<sub>3</sub>)<sub>0.5</sub>(OH)·0.11H<sub>2</sub>O-TiO<sub>2</sub> core-shell nanowires (left panels) and TiO<sub>2</sub> nanotubes (right panels) before and after thermal vapor sulfurization. The scale bars are 10 μm.

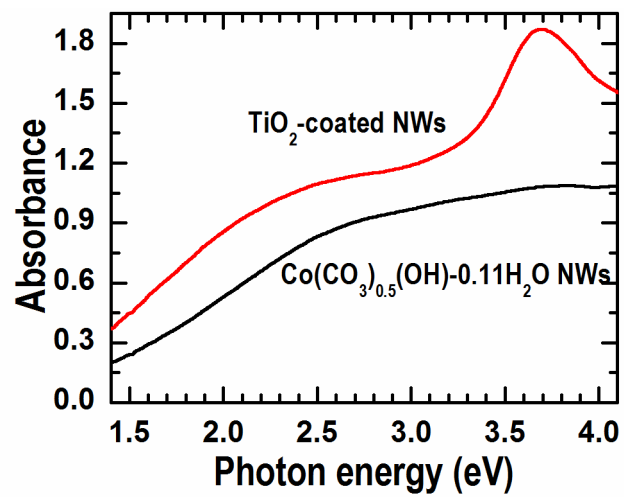
\* Author to whom correspondence should be addressed; electronic mail: [liuhf@imre.a-star.edu.sg](mailto:liuhf@imre.a-star.edu.sg)



**Fig. S2** XRD patterns collected from the  $Co(CO_3)_{0.5}(OH) \cdot 0.11H_2O$ - $TiO_2$  core-shell nanowires and the  $TiO_2$  nanotubes samples sulfurized at 500 °C.



**Fig. S3** Raman spectra collected at room temperature from the  $TiO_2$  nanotubes prepared on quartz substrates before and after the thermal vapor sulfurization.



**Fig. S4** Absorbance spectra collected from  $\text{Co}(\text{CO}_3)_{0.5}(\text{OH})\cdot 0.11\text{H}_2\text{O}$  nanowires before and after  $\text{TiO}_2$  coating by ALD.