

## Supplementary Information

# Synthesis of Exfoliated Titanium Dioxide Nanosheets / Nickel-Aluminum Layered Double Hydroxide as a Novel Electrode for Supercapacitors

Huimin Zhu,<sup>a</sup> Qi Liu,<sup>\*b</sup> Zhanshuang Li,<sup>\*a</sup> Jingyuan Liu,<sup>a</sup> Xiaoyan Jing<sup>b</sup>, Hongsen Zhang,  
<sup>a</sup> Jun Wang<sup>a,b</sup>

<sup>a</sup>Key Laboratory of Superlight Material and Surface Technology,

Ministry of Education, Harbin Engineering University, 150001, P. R. China.

<sup>b</sup>Institute of Advanced Marine Materials, Harbin Engineering University, 150001, P. R. China

E-mail: lzs@163.com; Fax:+86 0451 8251 9303; Tel:+86 0451 8251 9303

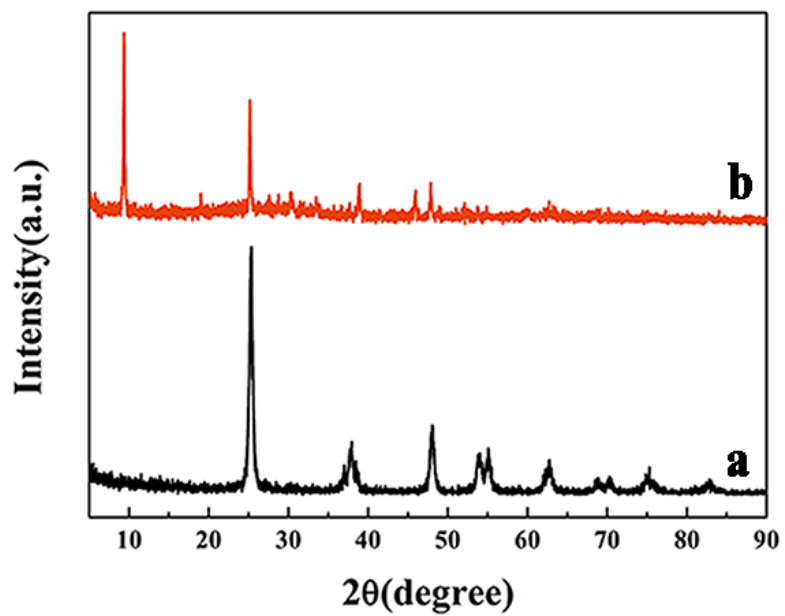


Fig. S1 The XRD patterns for (a) anatase TiO<sub>2</sub>, (b) protonated titanate.

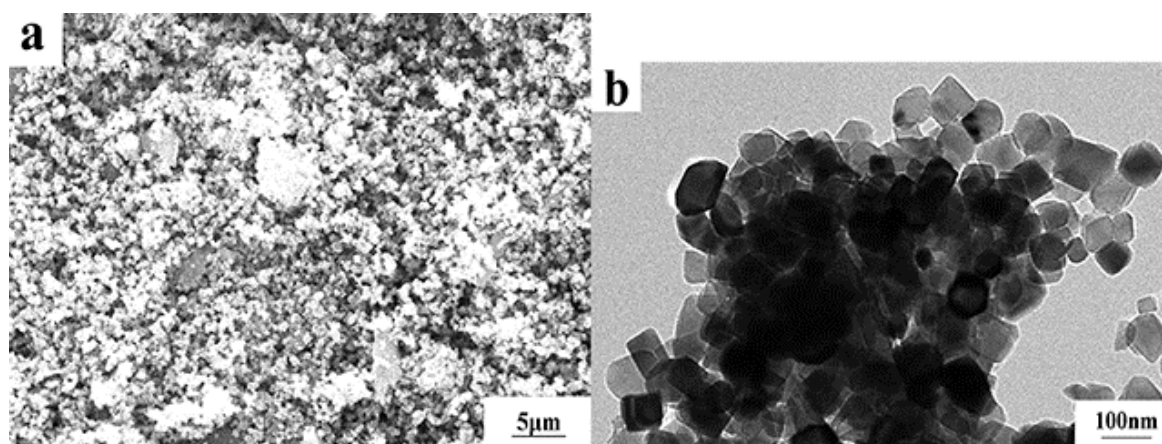
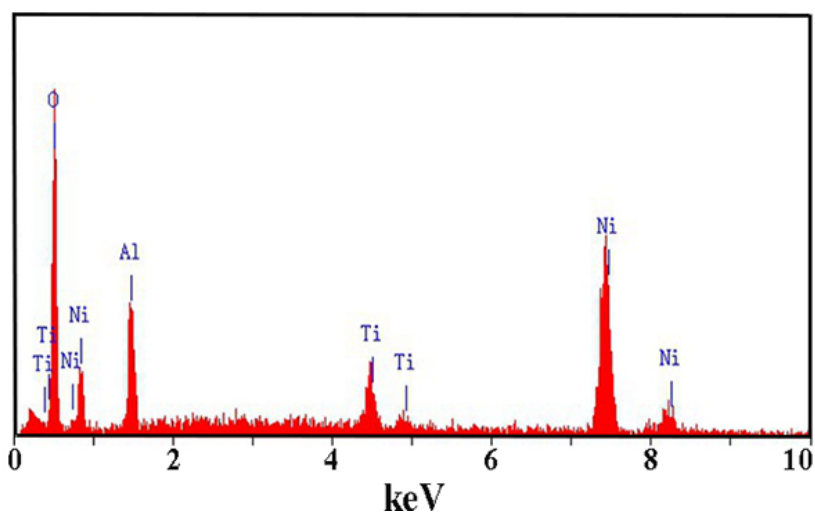


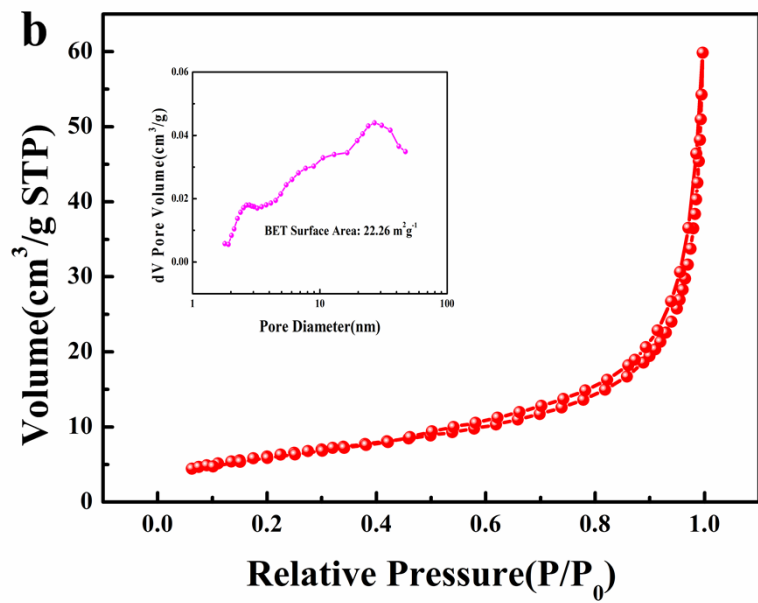
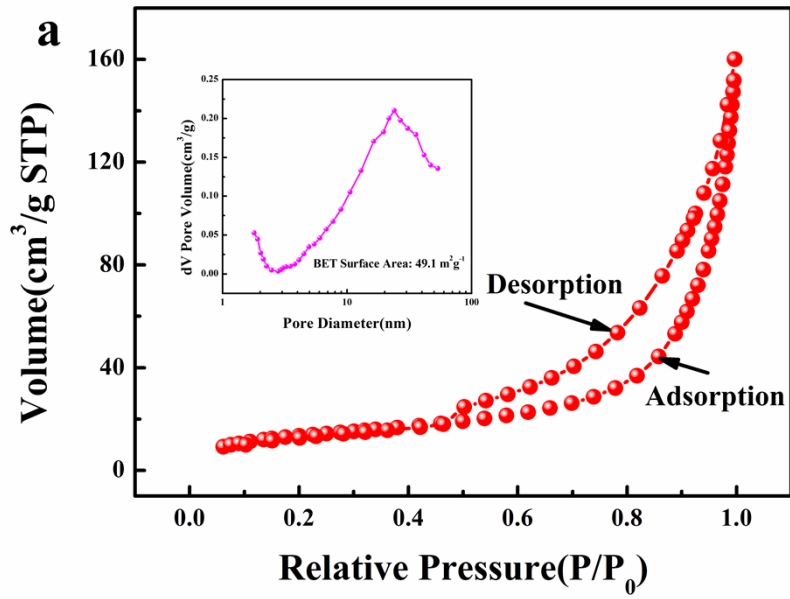
Fig. S2 The SEM and TEM of anatase TiO<sub>2</sub>.

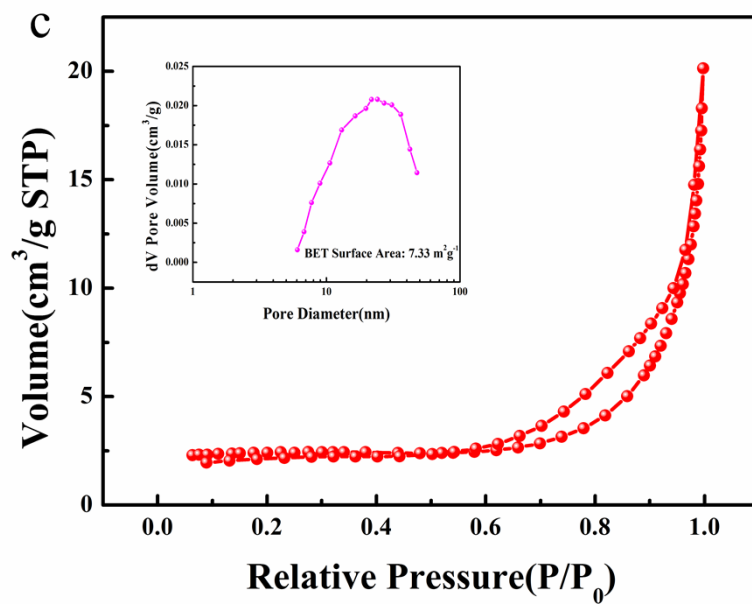


**Fig. S3** The photos of the colloidal suspension of exfoliated  $\text{TiO}_2$ .



**Fig. S4** The EDS spectrum of the  $\text{TiO}_2/\text{Ni-Al}$  LDH composite.





**Fig. S5** Nitrogen adsorption and desorption isotherms for the (a) TiO<sub>2</sub>/Ni-Al LDH, (b) Ni-Al LDH and (c) TiO<sub>2</sub>. The insets show the corresponding BJH pore size distributions.