

Supporting Information

Precise perylene bisimide-substituted polyethylene with high glass transition temperature and ordered architecture

Wei Song, Jianhua Wu, Guangda Yang, Huijing Han, Meiran Xie* and Xiaojuan Liao*

School of Chemistry and Molecular Engineering, East China Normal University, Shanghai 200241, China

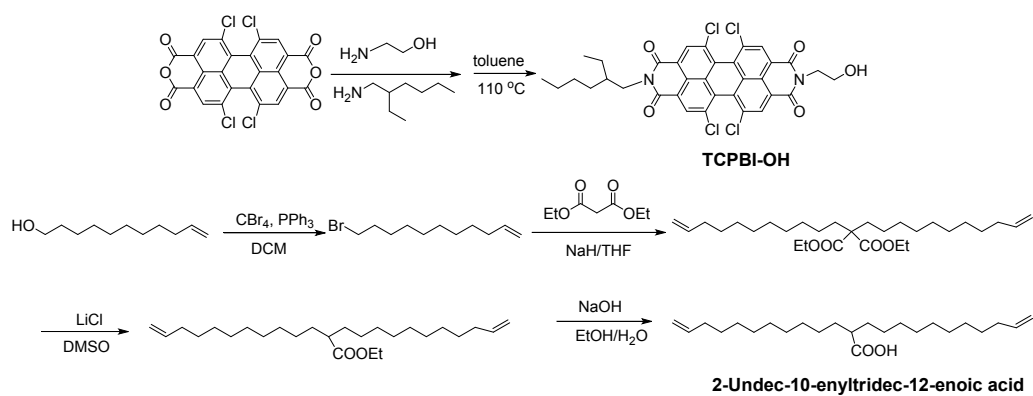
Corresponding Authors

*(M. X.) Tel: +86 21 54340058. Fax: +86 21 54340058.

E-mail: mrxie@chem.ecnu.edu.cn.

*(X. L.) Tel: +86 21 54340105. Fax: +86 21 54340105.

E-mail: xjliao@chem.ecnu.edu.cn.



Scheme S1 Syntheses of TCPBI-OH and 2-undec-10-enyltridec-12-enoic acid.

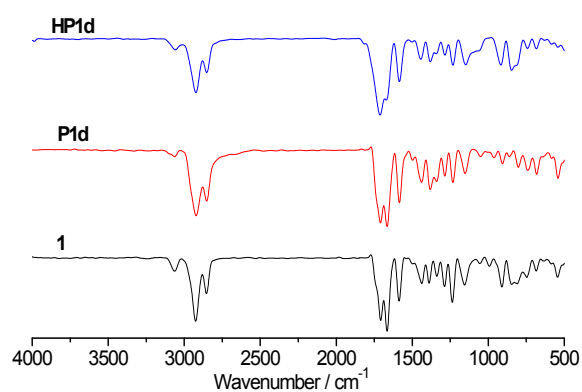


Fig. S1 IR spectra of monomer **1** and the relative polymers.

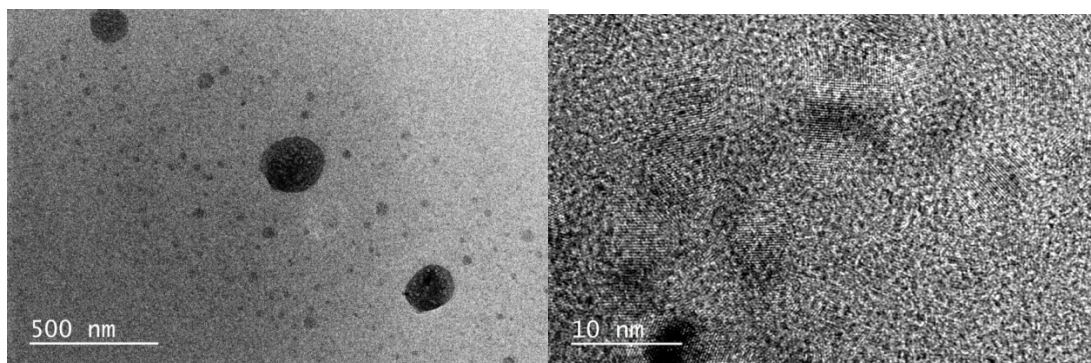


Fig. S2 TEM images of **P1d**.

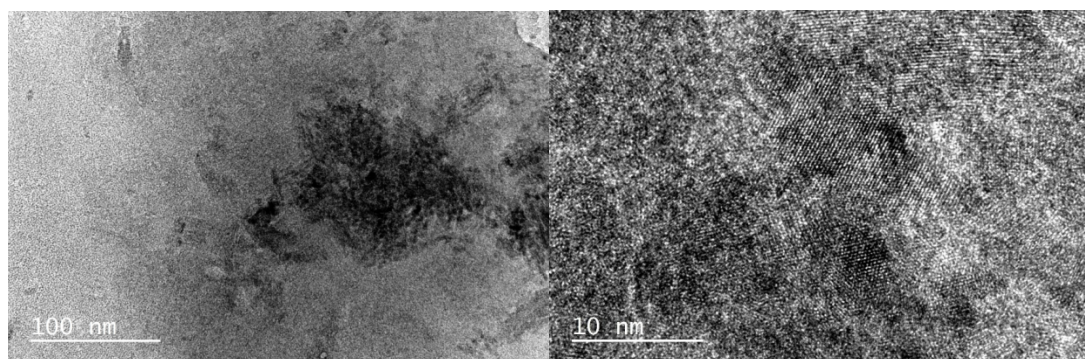


Fig. S3 TEM images of **HP1d**.

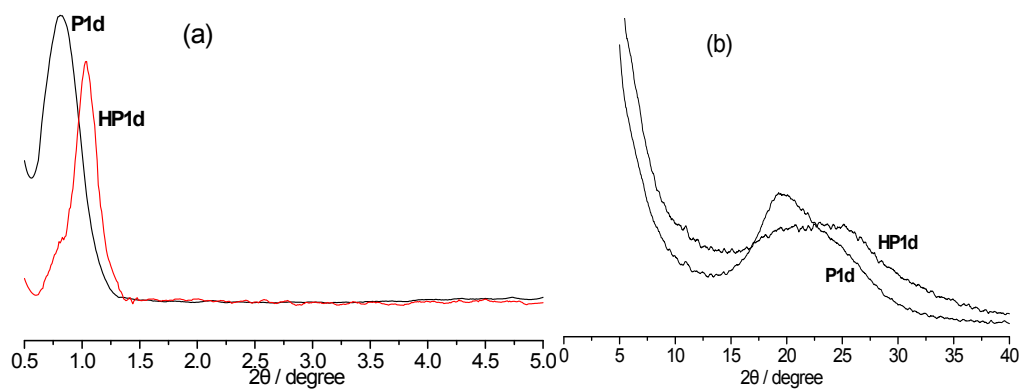


Fig. S4 XRD patterns of **P1d** and **HP1d**.

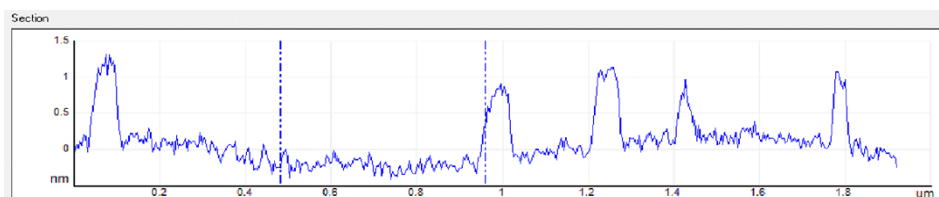


Fig. S5 Section analysis of AFM image of **HP1d**.

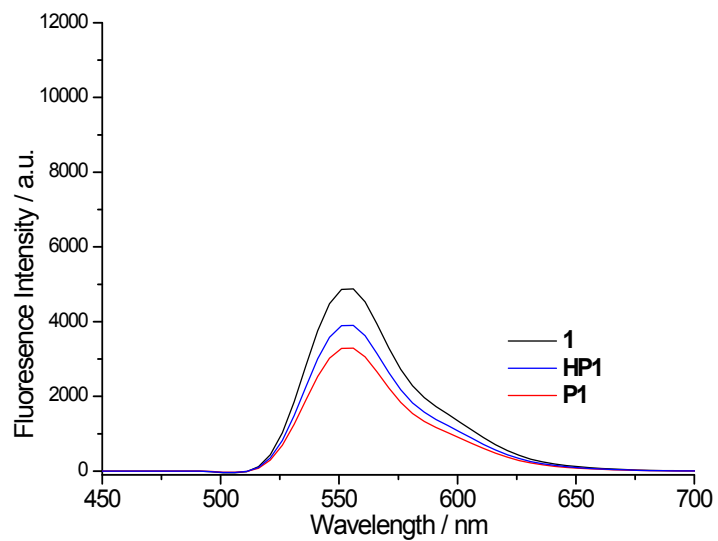


Fig. S6 Emission spectra of monomer and polymers under illumination in CHCl_3 solution excited at 522 nm; Φ_F was estimated using 9,10-diphenylanthracene ($\Phi = 90\%$) as standard.