

Supporting information

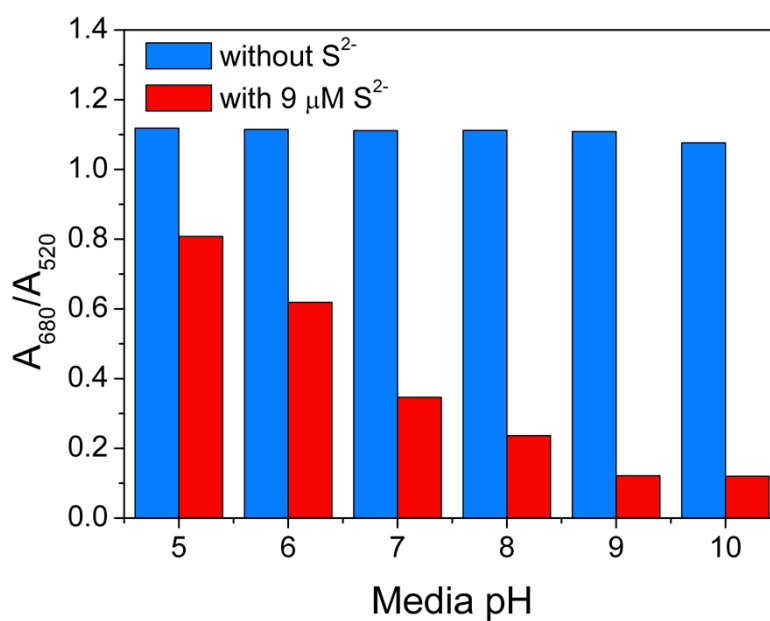


Fig. S1 Effect of media pH on the absorbance ratio (A_{680}/A_{520}) of the sensing system. The concentrations of TU were all 5 μM .

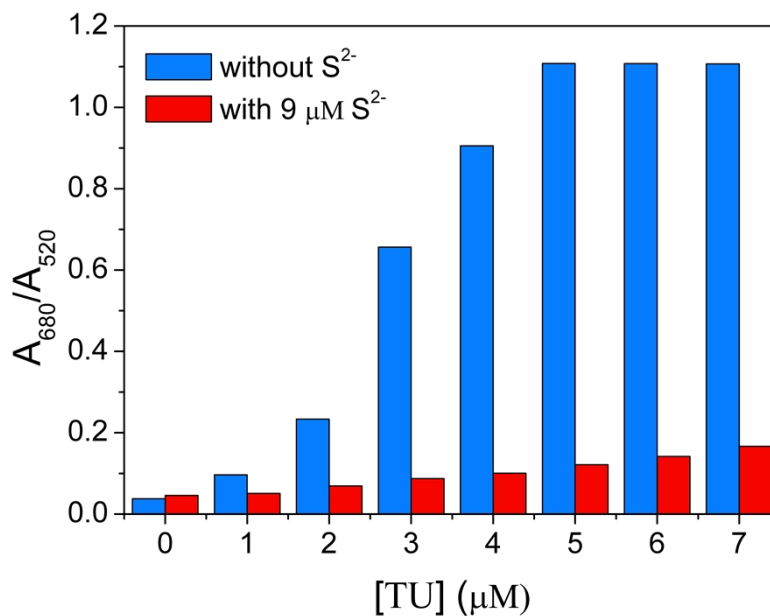


Fig. S2 Effect of the concentration of TU on the absorbance ratio (A_{680}/A_{520}) of sensing system.

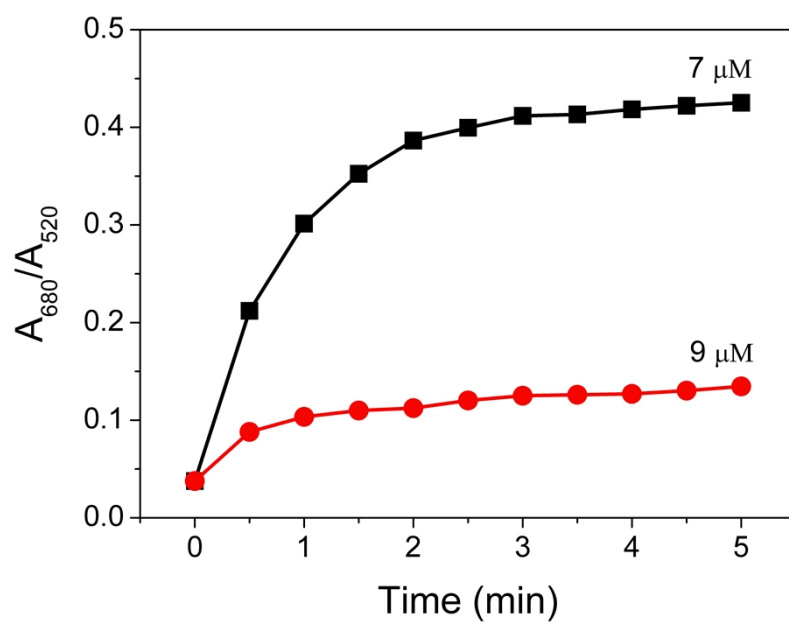


Fig. S3 Effect of incubation time on the absorbance ratio (A_{680}/A_{520}) of the sensing system.

The concentration of S^{2-} was 7 and $9 \mu\text{M}$.