

## Electronic Supplementary Information

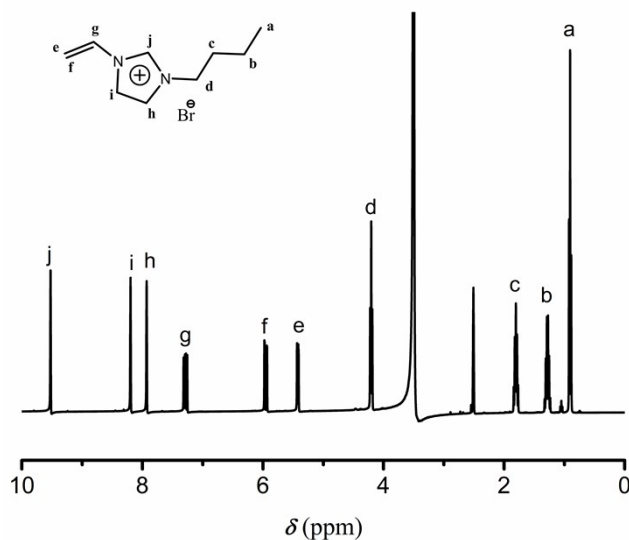
### Preparation of molecularly imprinted polymers using ion-pairs dummy template imprinting and ionic liquids

Ji Li,<sup>\*a</sup> Xiaoling Hu,<sup>a</sup> Ping Guan,<sup>a</sup> Xiaoyan Zhang,<sup>a</sup> Liwei Qian,<sup>a</sup> Renyuan Song,<sup>a</sup> Chunbao Du<sup>a</sup>  
and Chaoli Wang<sup>a</sup>

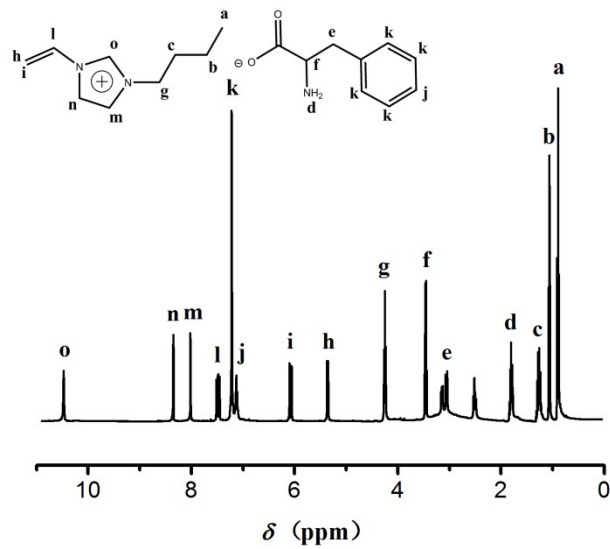
*Key Laboratory of space applied physics and chemistry, Ministry of Education, Department of Chemistry, School  
of Natural and Applied Science, Northwestern Polytechnical University, Xi'an 710129, PR China*

Tel.: +86 15319922429

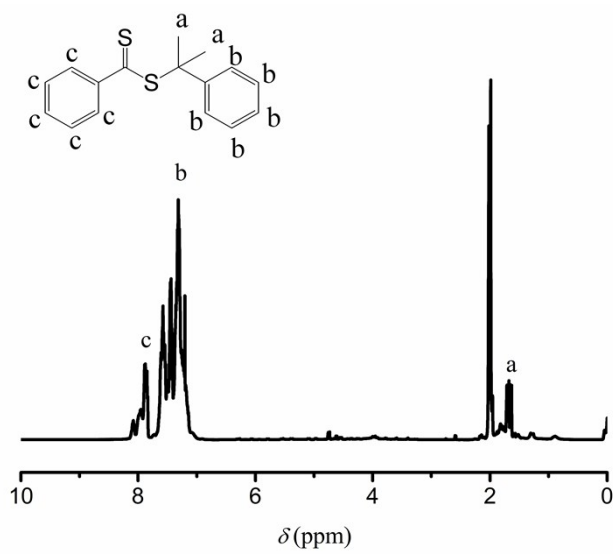
E-mail address: [lji2011@mail.nwpu.edu.cn](mailto:lji2011@mail.nwpu.edu.cn)



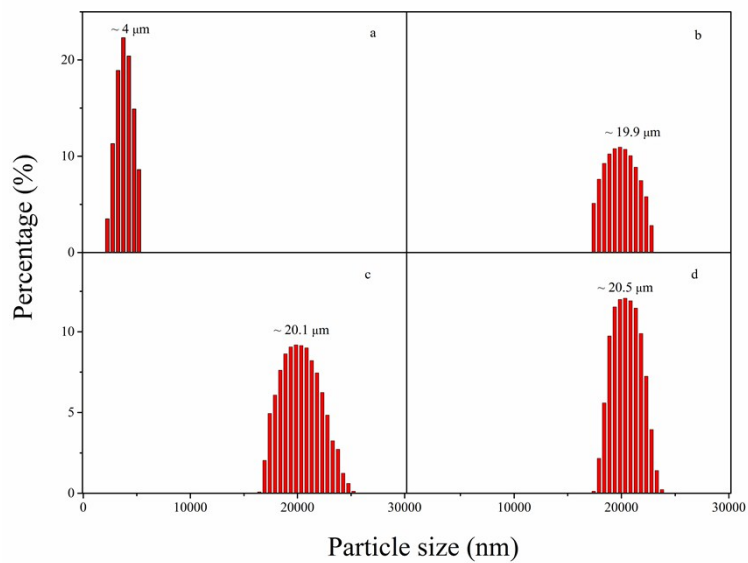
**Fig S1.** <sup>1</sup>H-NMR spectra (400 MHz) of the [Bvim]<sup>+</sup>Br<sup>-</sup> in DMSO-*d*<sub>6</sub>.



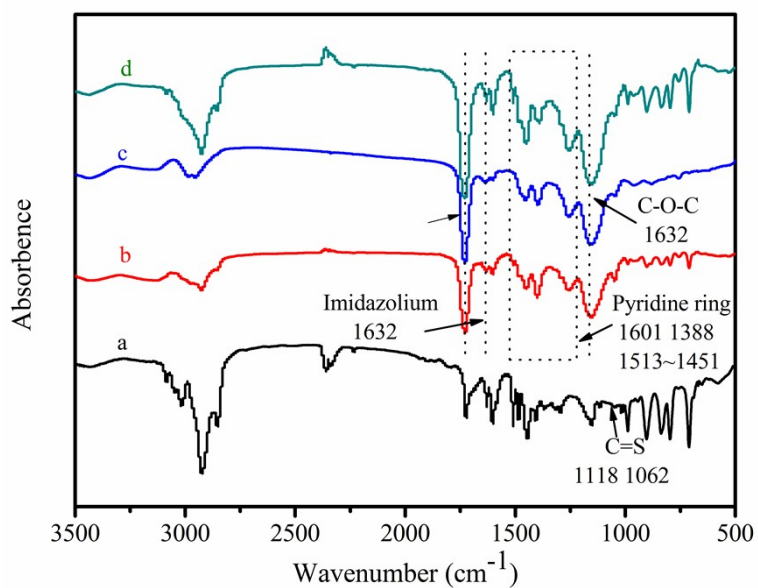
**Fig S2.** <sup>1</sup>H-NMR spectra (400 MHz) of the [Bvim][Phe] in DMSO-*d*<sub>6</sub>.



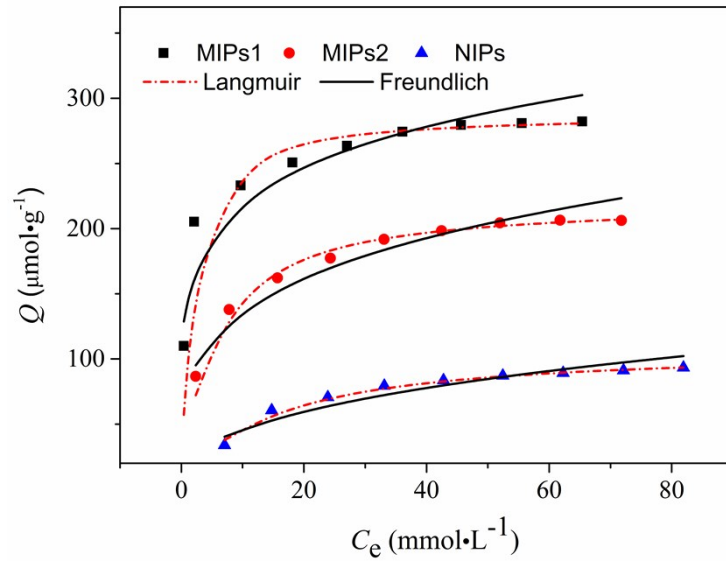
**Fig S3.** <sup>1</sup>H-NMR spectra (400 MHz) of the CDB in DMSO-*d*<sub>6</sub>.



**Fig. S4.** Particle size distribution of surface-CTA (a), MIPs1 (b), MIPs2 (c) and NIPs(d).



**Fig. S5.** FT-IR spectrum of the surface-CTA (a), MIPs1 (b), MIPs2 (c) and NIPs1 (d).



**Fig.S6.** Fitting using Langmuir and Freundlich isotherm model for of L-Phe adsorption onto MIPs and NIPs.