

Electronic Supplementary Information

Waterless tanning: Chrome tanning in ethanol and its derivatives

S. Silambarasan, R. Aravindhana, J. Raghava Rao* and P. Thanikaivelan*

*Central Leather Research Institute (Council of Scientific and Industrial Research), Adyar,
Chennai 600020, India.*

Fig. S1. Scanning electron microscopic images showing the surface of control and experimental crust leathers from (a) pickle-based (b) pickle-less chrome tanning in ethanol medium and (c) pickled-based chrome tanning in water medium. Post tanning was carried out in water medium for both control and experimental chrome tanned leathers.

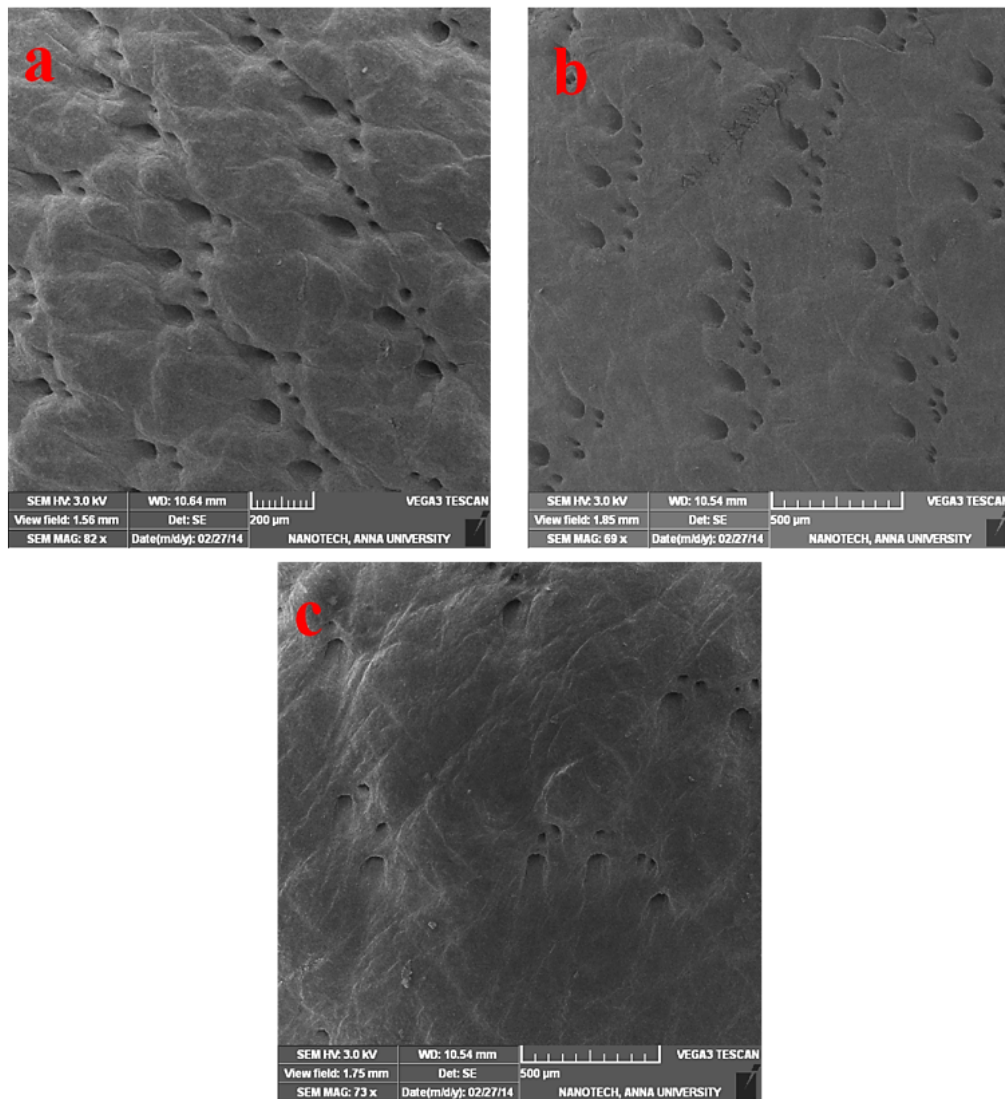


Fig. S2. Scanning electron microscopic images showing the cross section of control and experimental chrome tanned leathers from (a) pickle-based (b) pickle-less chrome tanning in ethanol medium and (c) pickled-based chrome tanning in water medium. Post tanning was carried out in water medium for both control and experimental chrome tanned leathers.

