

Supplementary file

Table 1. Physico-chemical characteristics of waste water from the factory of transport packaging

Parameters	Units	Minimum extent permitted discharge into the sewer	Minimum values	Maximum values	Mean values
pH value		6.5-9.5	7	8.2	7.6
Suspended solids	mg/L	150	850	1250	1050
COD	mgO ₂ /l	1000	900	1150	1025
BOD ₅	mgO ₂ /l	500	720	780	750
Chlorides	mg/L		45	70	57.5
Sulphates	mg/L	400	46	90	68
Anionic detergents	mg/L		3.2	3.8	3.5
Nitrate	mg/L		10	10.2	10.1
Nitrites	mg/L		8.2	8.6	8.4
Ammonium salt	mg/L		40	60	50
Phosphates	mg/L		15	23	19
Calcium	mg/L	5.0	0.05	0.05	0.05
Iron	mg/L	200	0.05	0.05	0.05
Zinc	mg/L	2.0	0.05	0.05	0.05

BOD- biochemical oxygen demand

COD- organic chemical oxygen demand

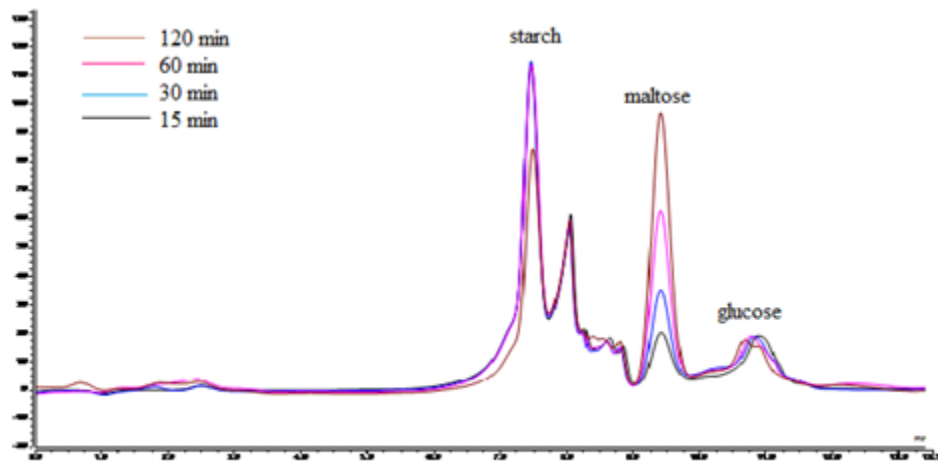


Figure 1. HPLC analysis of starch hydrolysis by *P. chitinolyticus* CKS1