

## Electronic Supplementary Information

### A Novel Shuttle-like Fe<sub>3</sub>O<sub>4</sub>-Co<sub>3</sub>O<sub>4</sub> Assembling Architecture with Highly Reversible Li Storage

Kaina Shang<sup>a,c</sup>, Wentao Li<sup>a,c</sup>, Yongmei Liu<sup>d</sup>, Wenguang Zhang<sup>b</sup>, Hui Yang<sup>a,c</sup>,  
Jiqing Xie<sup>a,c</sup>, Zuyan Liu<sup>b</sup>, Shu-Lei Chou,<sup>e</sup> Lingzhi Zhao<sup>a,c\*</sup>, Ronghua Zeng<sup>b,c\*</sup>

*a Guangdong Provincial Key Laboratory of Nanophotonic Functional Materials and Devices,  
Institute of Opto-Electronic Materials and Technology, South China Normal University,  
Guangzhou 510631, China*

*b School of Chemistry and Environment, Guangzhou Key Laboratory of Analytical Chemistry for  
Biomedicine, South China Normal University, Guangzhou 510006, China*

*c Guangdong Engineering Technology Research Center of Low Carbon and Advanced Energy  
Materials, Guangzhou 510631, China*

*d Department of Electronic Information, Guangzhou Vocational College  
of Science and Technology, Guangzhou 510550, China*

*e Institute for Superconducting and Electronic Materials, Australian Institute for Innovative  
Materials, University of Wollongong, Innovation Campus, Squires Way, North Wollongong  
NSW 2522, Australia.*

---

\* Corresponding author. E-mail address: ([zengronghua@m.scnu.edu.cn](mailto:zengronghua@m.scnu.edu.cn)); ([lzzhao@vip.163.com](mailto:lzzhao@vip.163.com))

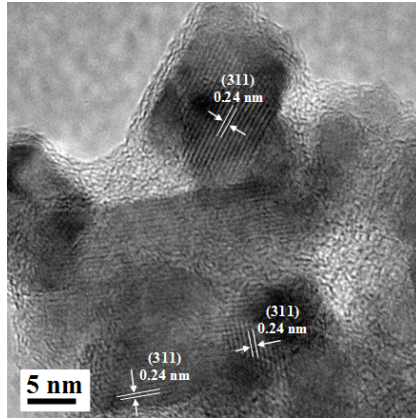


Figure S1. HRTEM image of SFC.

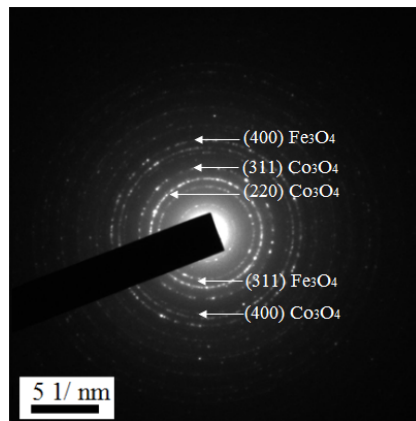


Figure S2. SAED pattern of SFC.