

Ultrasensitive electrochemiluminescence aptasensor based on graphene/polyaniline composite films modified electrode and CdS quantum dots coated platinum nanostructured networks as labels

Qingkun Kong^a, Meng Li^a, Chao Ma^a, Hongmei Yang^a, Shenguang Ge^b, Mei Yan^a, Jinghua Yu^a. *

^a School of Chemistry and Chemical Engineering, University of Jinan, Jinan 250022, P. R. China.

^b Shandong Provincial Key Laboratory of Preparation and Measurement of Building Materials, University of Jinan, Jinan 250022, P. R. China.

*Corresponding author: Jinghua Yu

E-mail: ujn.yujh@gmail.com

Telephone: +86-531-82767161

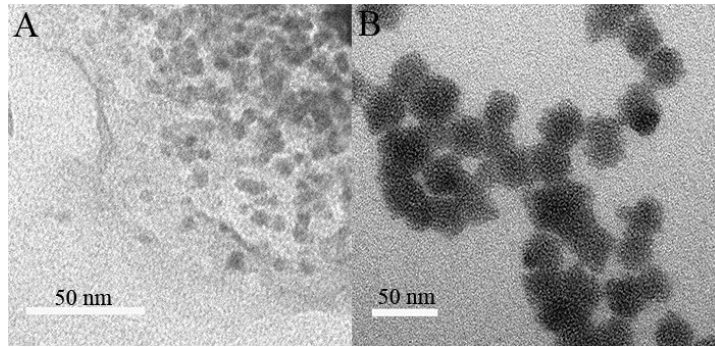


Figure S1. TEM of CdS QDs (A) and PNNs/CdS QDs (B).