

## Supporting Materials

<sup>1</sup> H NMR spectrum of compound 1 in CDCl <sub>3</sub>	S1
<sup>13</sup> C NMR spectrum of compound 1 in CDCl <sub>3</sub>	S2
<sup>1</sup> H NMR spectrum of compound 2 in DMSO- <i>d</i> <sub>6</sub>	S3
<sup>13</sup> C NMR spectrum of compound 2 in DMSO- <i>d</i> <sub>6</sub>	S4
<sup>1</sup> H NMR spectrum of compound probe 1 in CDCl <sub>3</sub>	S5
<sup>13</sup> C NMR spectrum of probe 1 in CDCl <sub>3</sub>	S6
HRMS spectrum of compound 1	S7
HRMS spectrum of compound 2	S8
HRMS spectrum of probe 1	S9
Choice of solvents ratio of EtOH with H <sub>2</sub> O for probe 1	S10

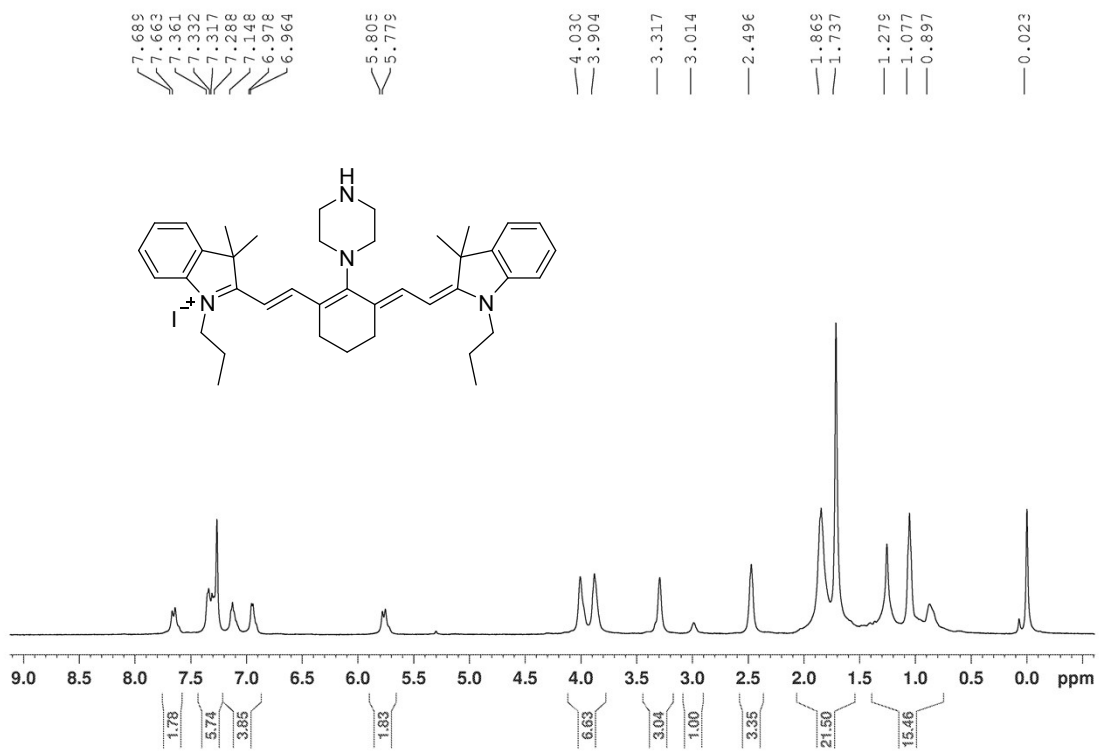


Fig. S1 <sup>1</sup>H NMR spectrum of compound 1 in CDCl<sub>3</sub>

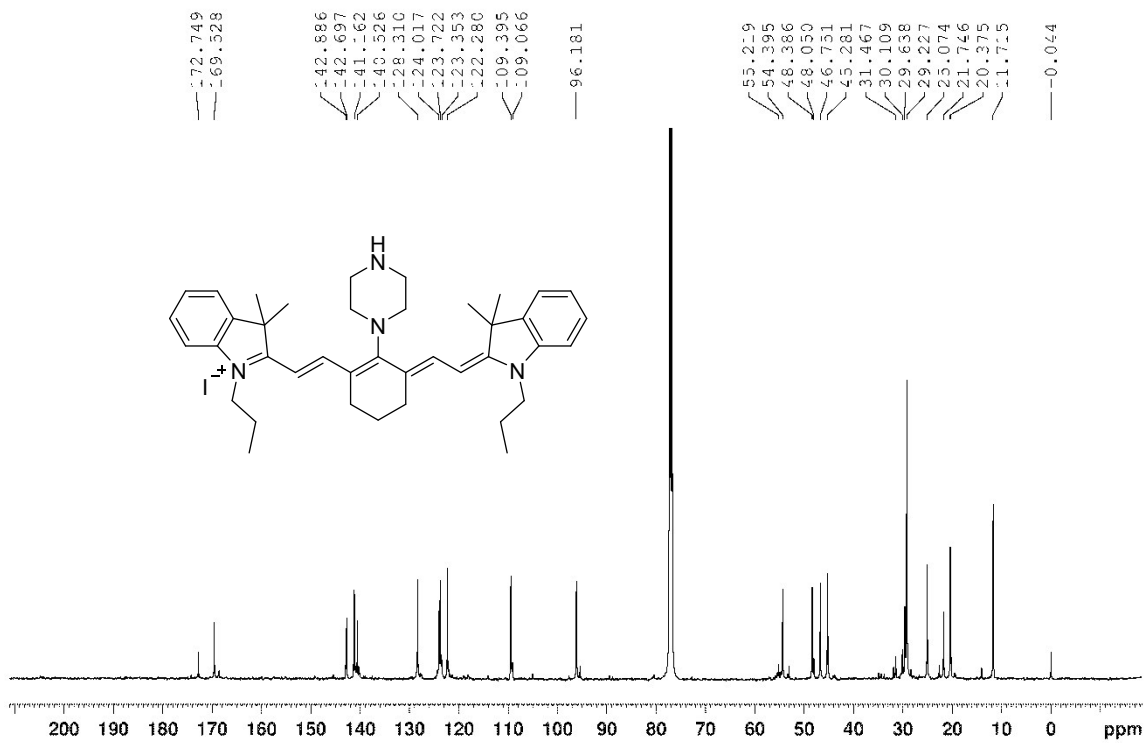


Fig. S2 <sup>13</sup>C NMR spectrum of compound 1 in CDCl<sub>3</sub>

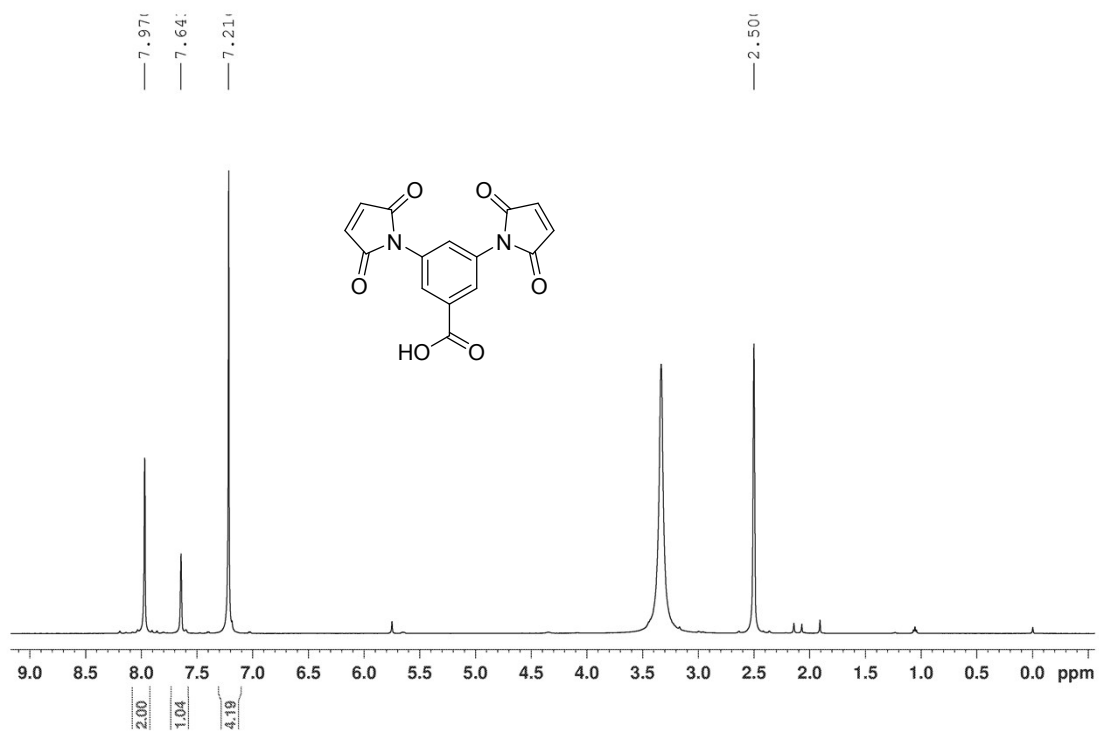


Fig. S3 <sup>1</sup>H NMR spectrum of compound 2 in DMSO-*d*<sub>6</sub>

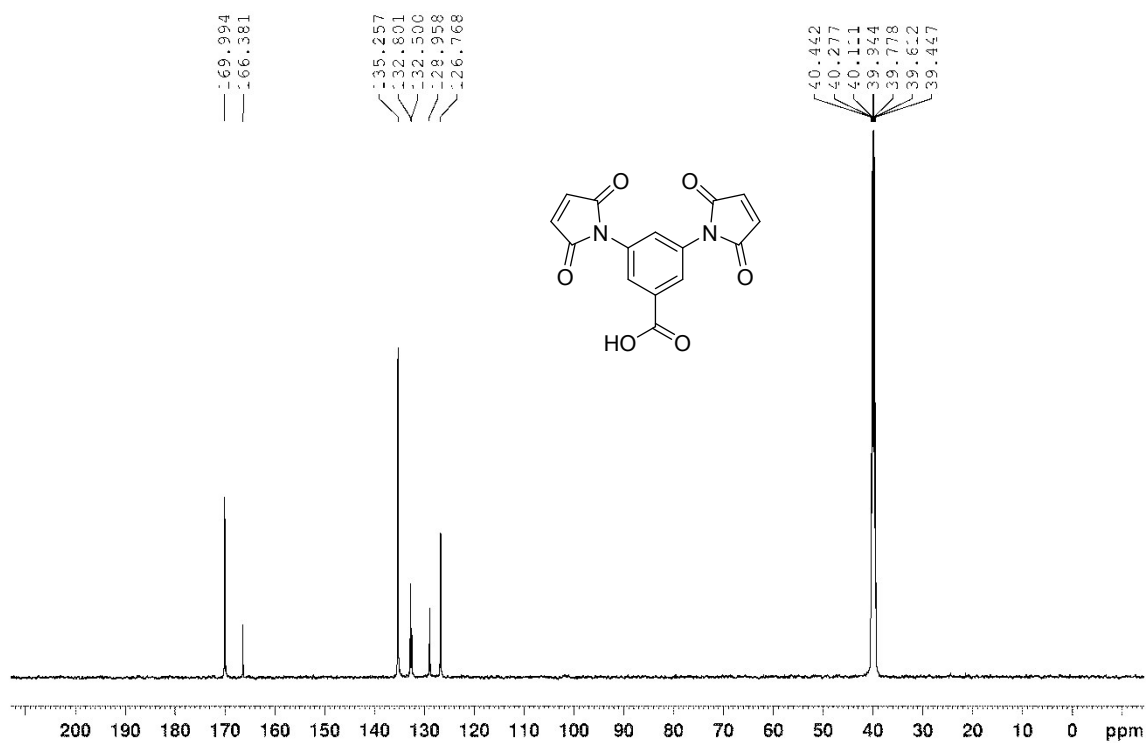
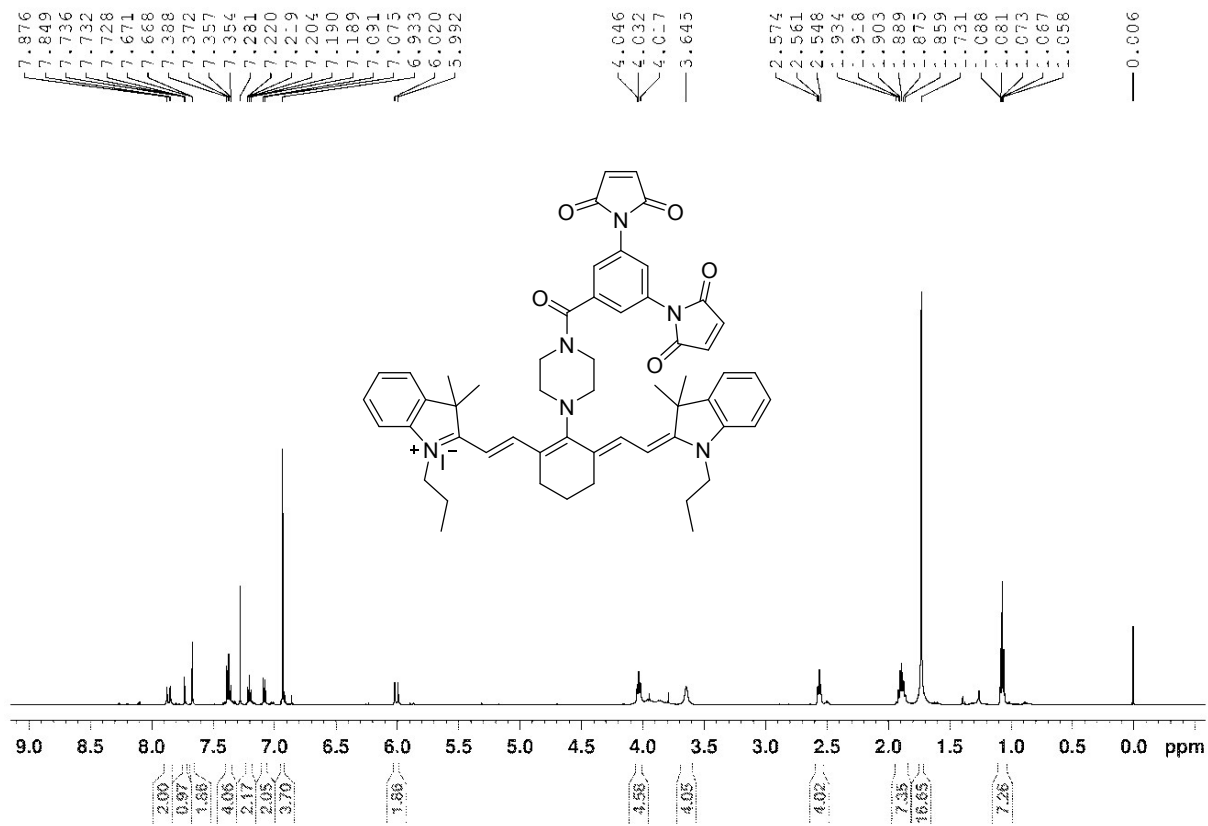
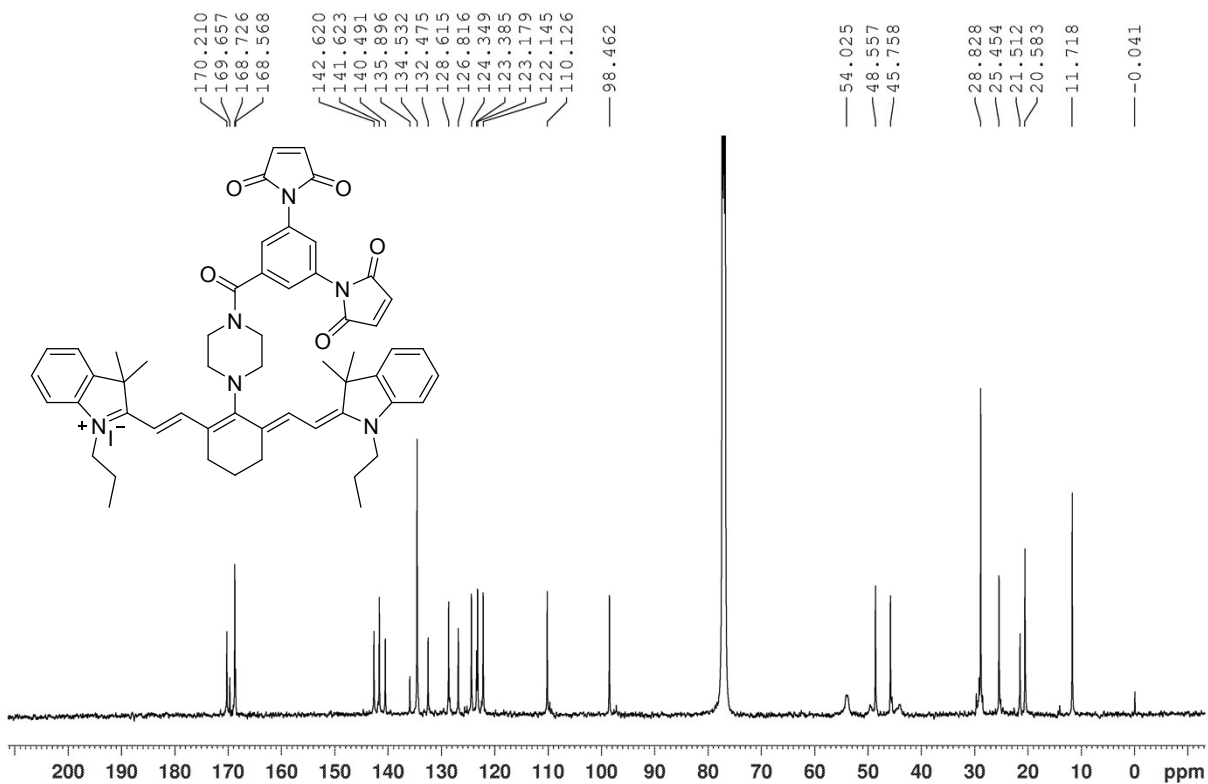


Fig. S4 <sup>13</sup>C NMR spectrum of compound 2 in DMSO-*d*<sub>6</sub>



**Fig. S5** <sup>1</sup>H NMR spectrum of compound 1 in CDCl<sub>3</sub>.



**Fig. S6** <sup>13</sup>C NMR spectrum of probe 1 in CDCl<sub>3</sub>



SAMPLE-150831-04 363 (6.779)

TOF MS ES-  
9.60e3

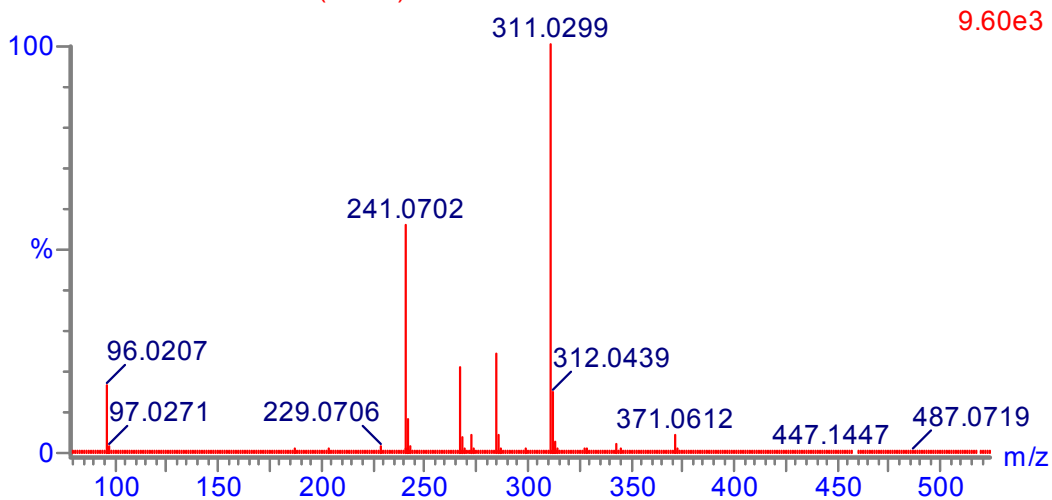
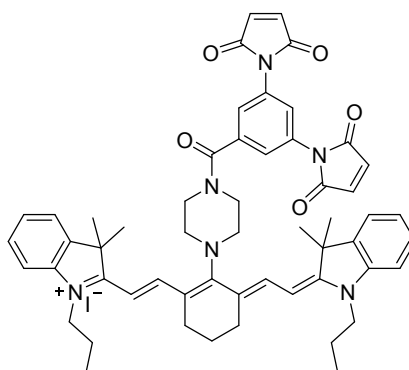
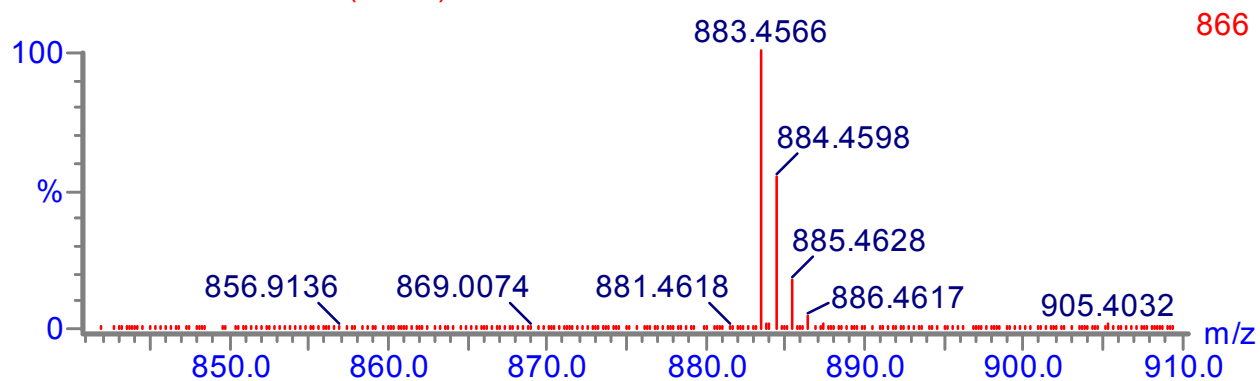


Fig. S8 HRMS spectrum of compound 2



SAMPLE-140723-01 96 (1.790)

TOF MS ES+  
866



SAMPLE-140723-02 81 (1.501)

TOF MS ES-  
1.16e3

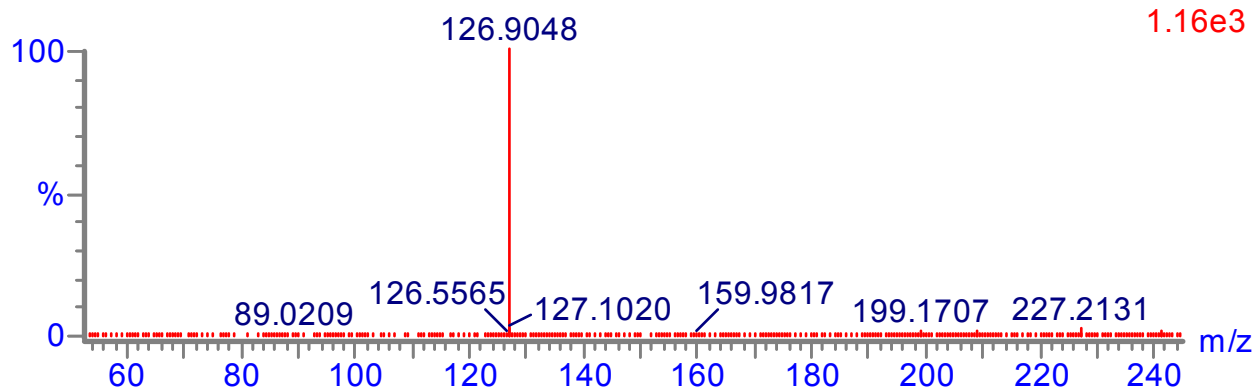


Fig. S9 HRMS spectrum of probe 1

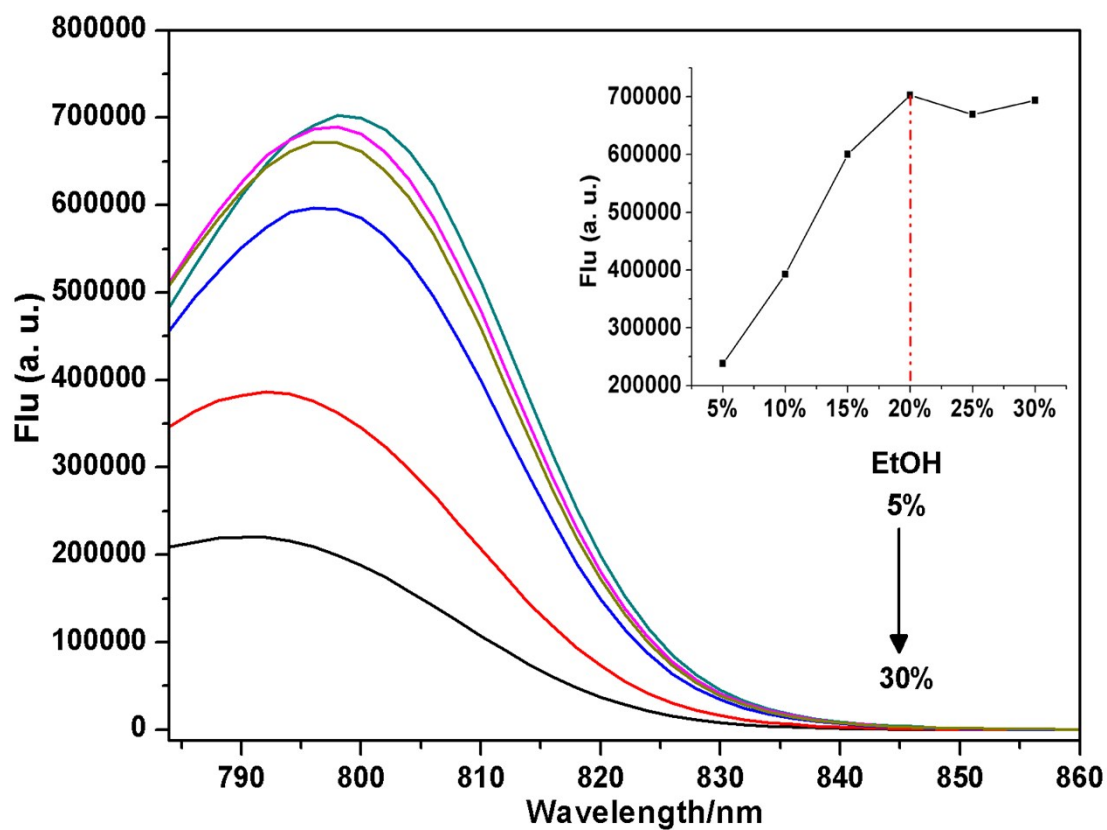


Fig. S10 Choice of solvents ratio of EtOH with H<sub>2</sub>O for probe 1