

## Catalytic conversion of glucose and cellobiose to ethylene glycol over

### Ni-WO<sub>3</sub>/SBA-15 catalysts

Yueling Cao<sup>1,2</sup>, Junwei Wang<sup>1\*</sup>, Maoqing Kang<sup>1</sup>, Yulei Zhu<sup>1</sup>

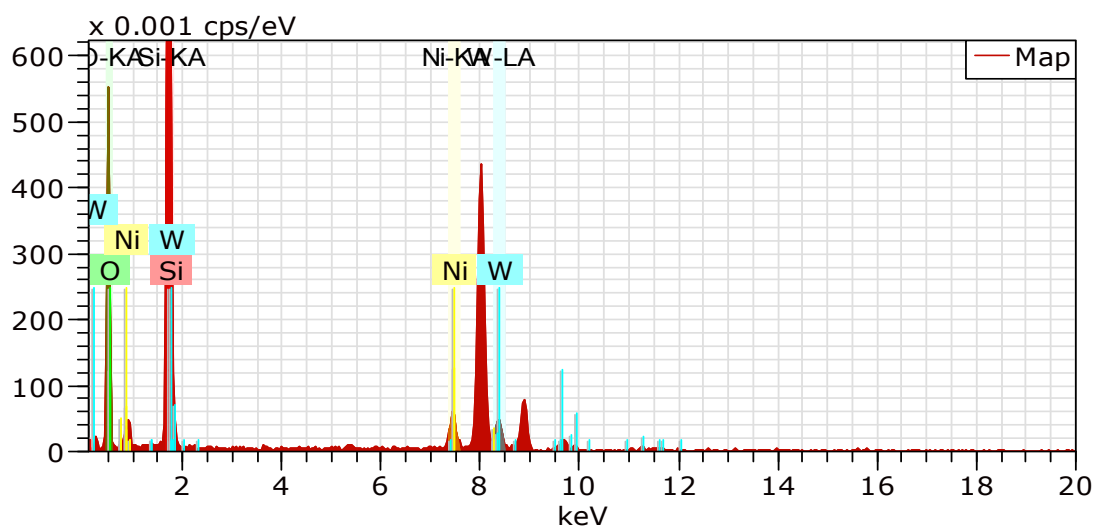
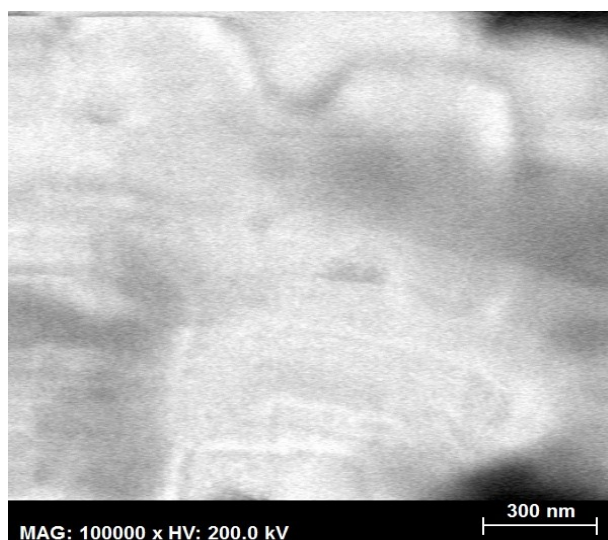
(1. Institute of Coal Chemistry, Chinese Academy of Sciences, Taiyuan 030001, PR China;

2. University of Chinese Academy of Sciences, Beijing 100049, PR China)

\* **Corresponding author:** Institute of Coal Chemistry, Chinese Academy of Sciences, Taiyuan 030001, P.R. China.

Tel: +86 351 4069680; Fax: +86 351 4069680.

E-mail: [wangjw@sxicc.ac.cn](mailto:wangjw@sxicc.ac.cn)(J. Wang).



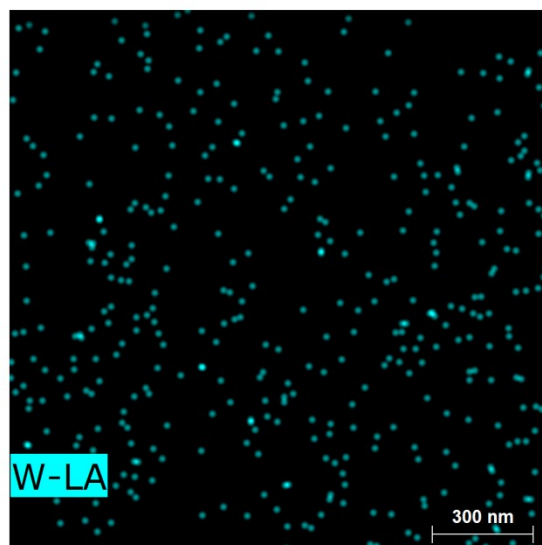
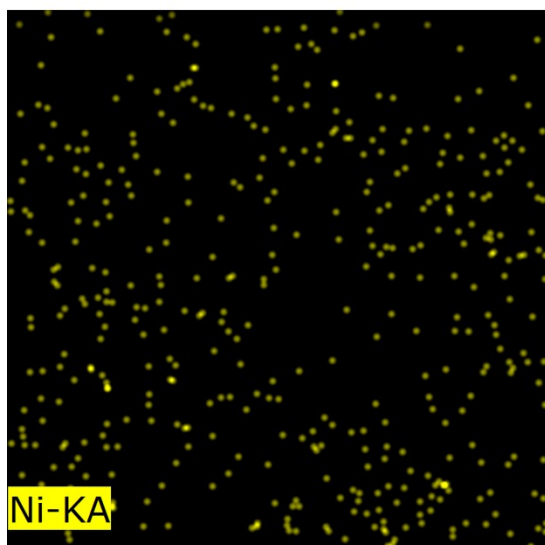
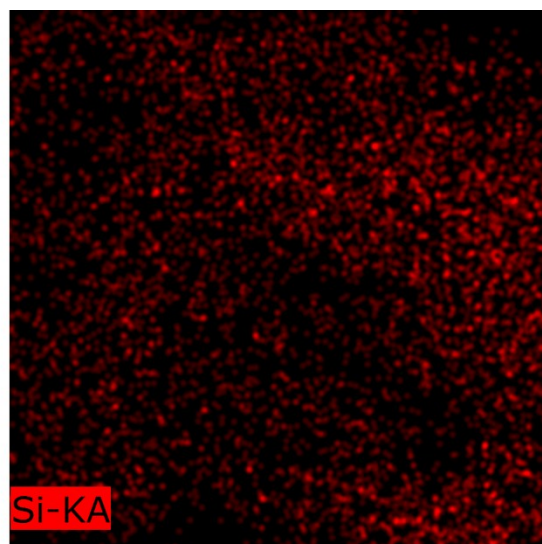
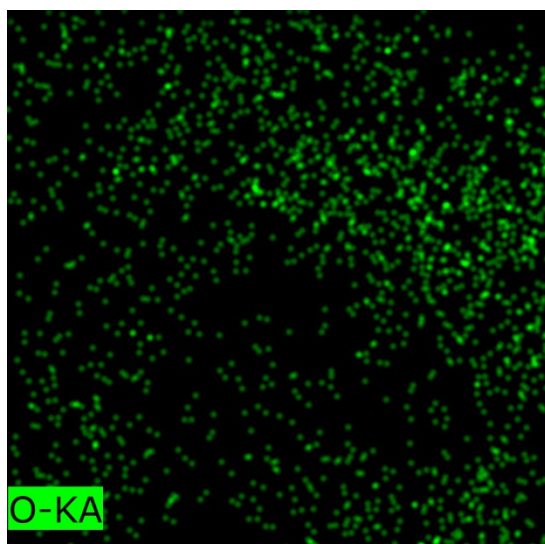
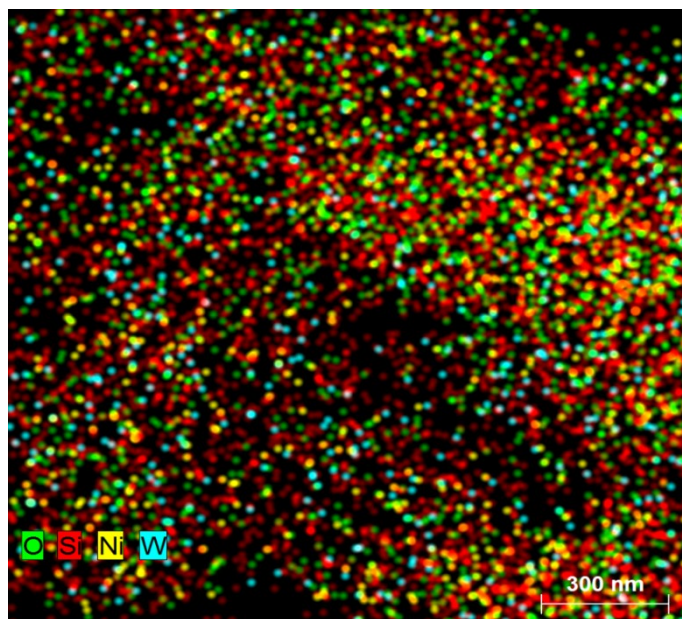
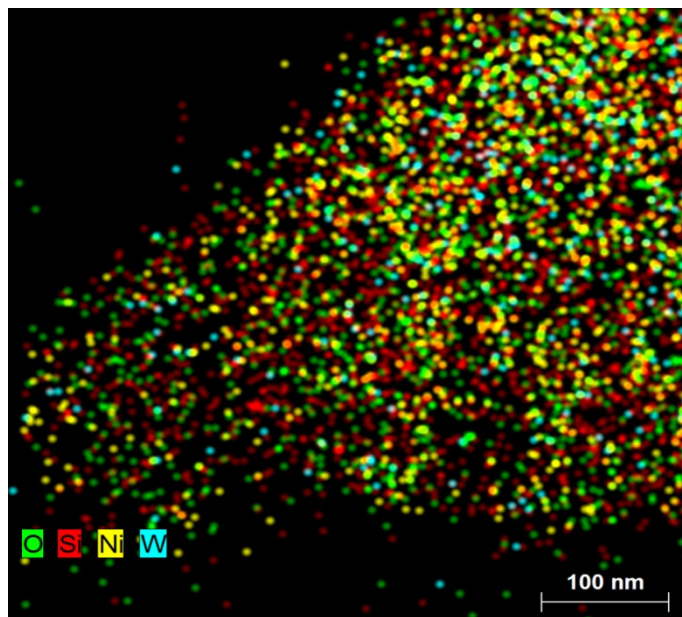
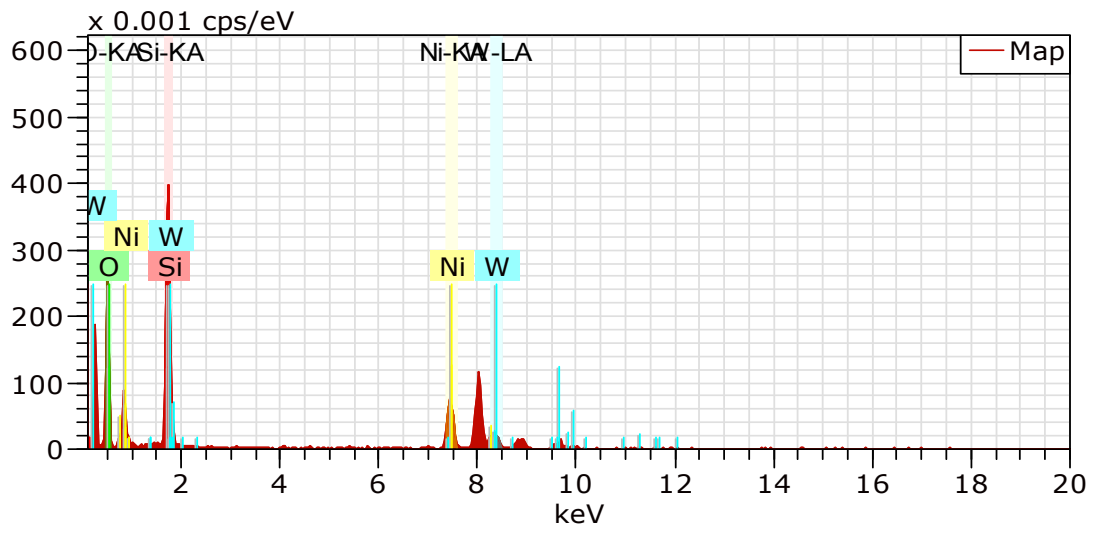
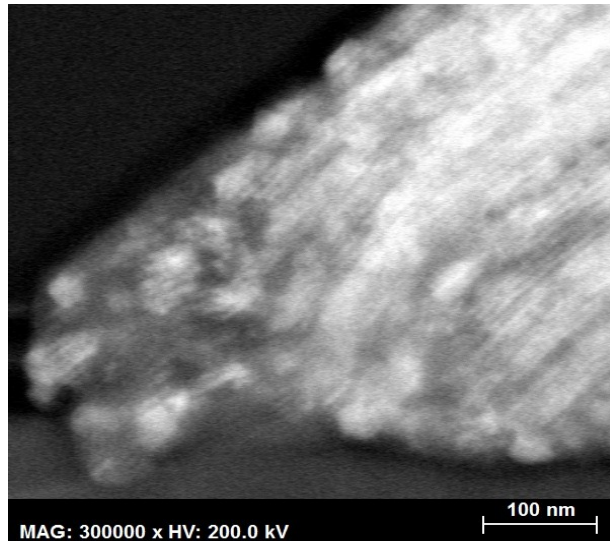


Figure S1 TEM-EDS analysis for the 3%Ni-15%WO<sub>3</sub>/SBA-15 sample



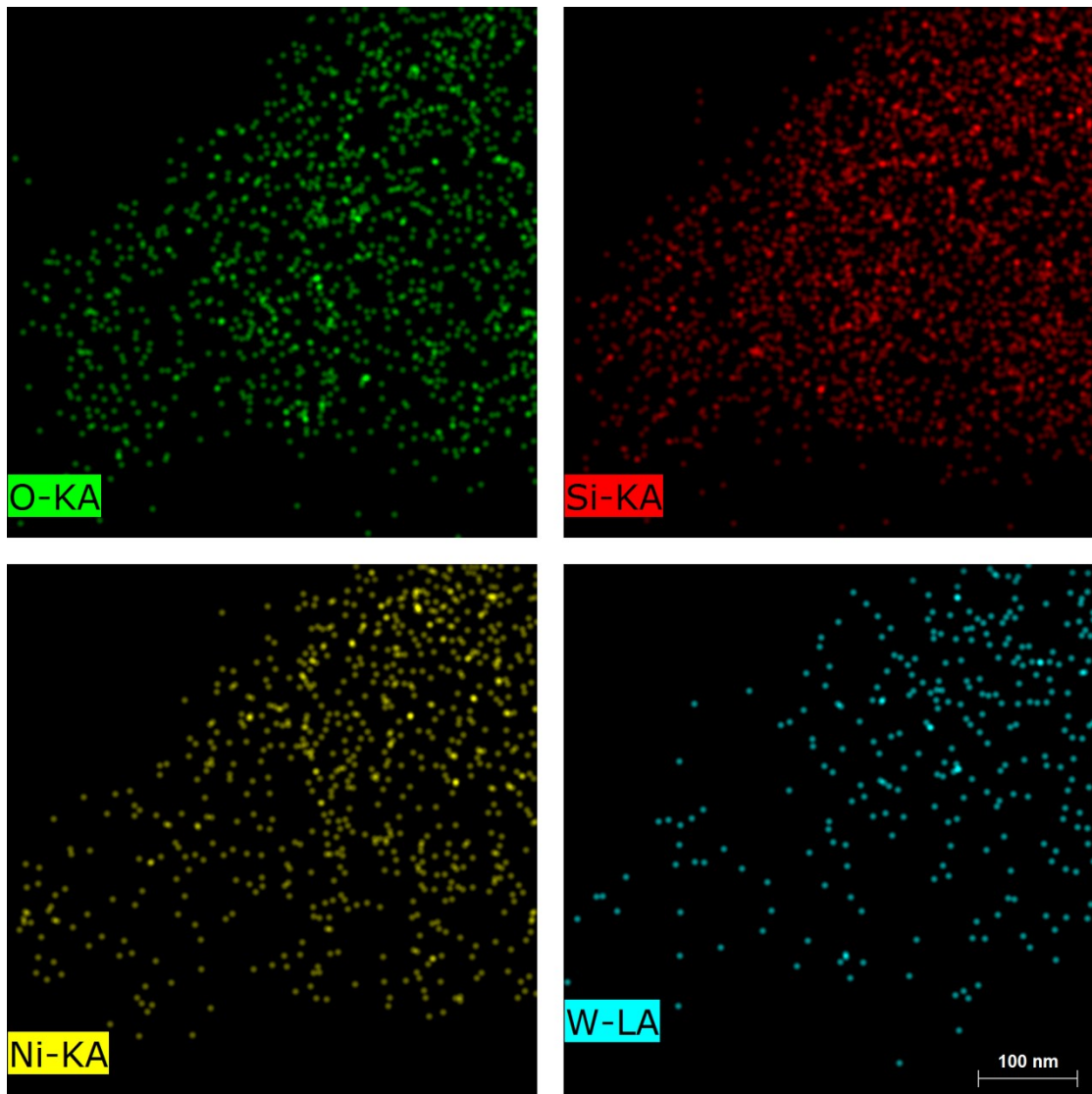


Figure S2 TEM-EDS analysis for the 15%Ni-15%WO<sub>3</sub>/SBA-15 sample