

Supporting Information

For

A supramolecular assembling of Zinc porphyrin with a π -conjugated oligophenylenevinylene (oPPV) molecular wire for dye sensitized solar cell

A. Charisiadis¹, C. Stangel¹, V. Nikolaou¹, M. S. Roy², G. D. Sharma³, A. G. Coutsolelos^{1*}

¹Department of Chemistry, University of Crete, Laboratory of Bioinorganic Chemistry, Voutes Campus, P.O. Box 2208, 71003 Heraklion, Crete, Greece

²Defence Laboratory, Jodhpur (Raj.) 342011, India

³R & D Centre for Engineering and Science
JEC group of colleges, Jaipur Engineering College campus
Kukas, Jaipur (Raj.) 303101, India

* Corresponding authors

G. D. Sharma gdsharma273@gmail.com

A. G. Coutsolelos acoutsol@uoc.gr

Table of contents

Figure S1a. ^1H NMR spectrum in CDCl_3 of compound LC	S-3
Figure S1b. Focus on aromatic region of ^1H NMR spectrum of LC	S-3
Figure S2a. ^{13}C NMR spectrum in CDCl_3 of compound LC	S-4
Figure S2b. ^{13}C NMR spectrum in CDCl_3 of compound LC	S-4
Figure S3. Mass spectrum of compound LC	S-5
Figure S4. Cyclic and square wave voltammograms of compound LC	S-5
Figure S5. A different view perspective of the gas-phase geometry structure of ZnTPP- LC	S-6
Table S1. Coordinates of gas phase geometry optimized structure of ZnTPP-LC calculated by DFT.....	S-6

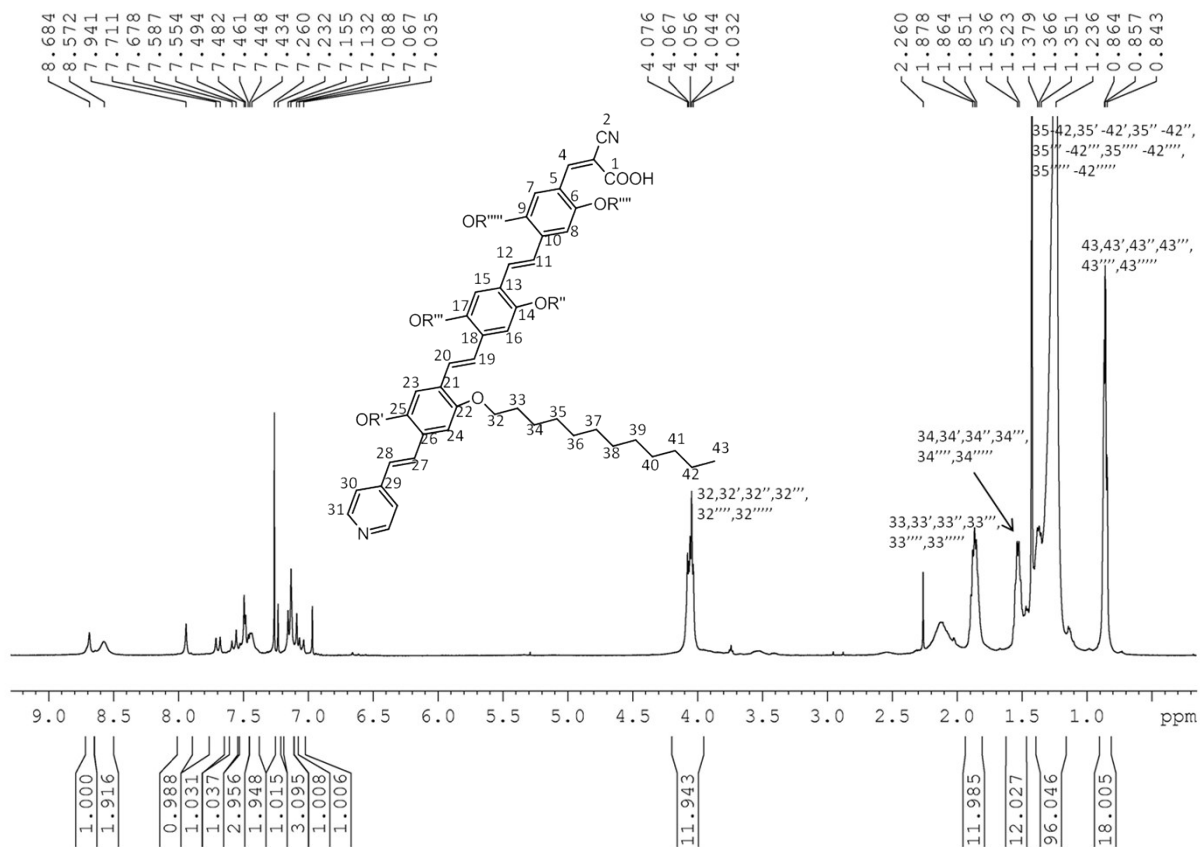


Figure S1a. ^1H NMR spectrum of LC (500MHz, CDCl_3)

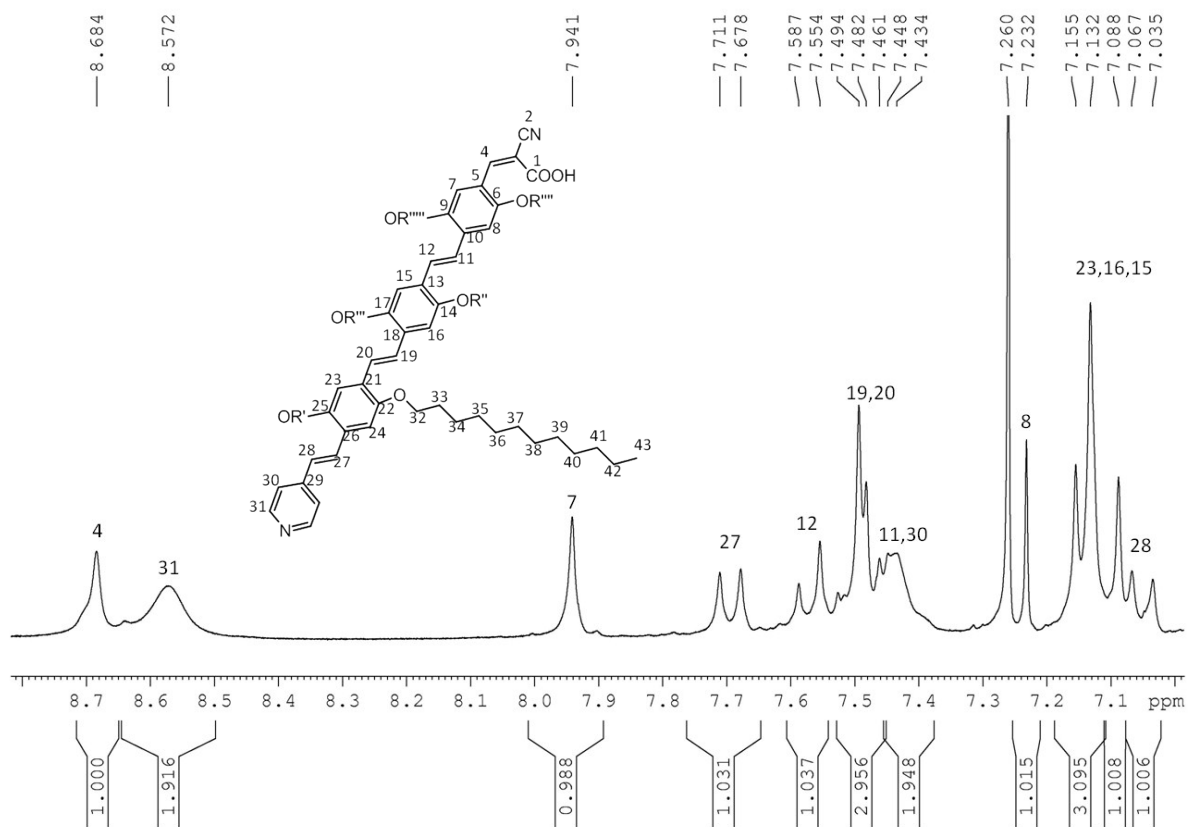


Figure S1b. Focus on aromatic region of ^1H NMR of LC

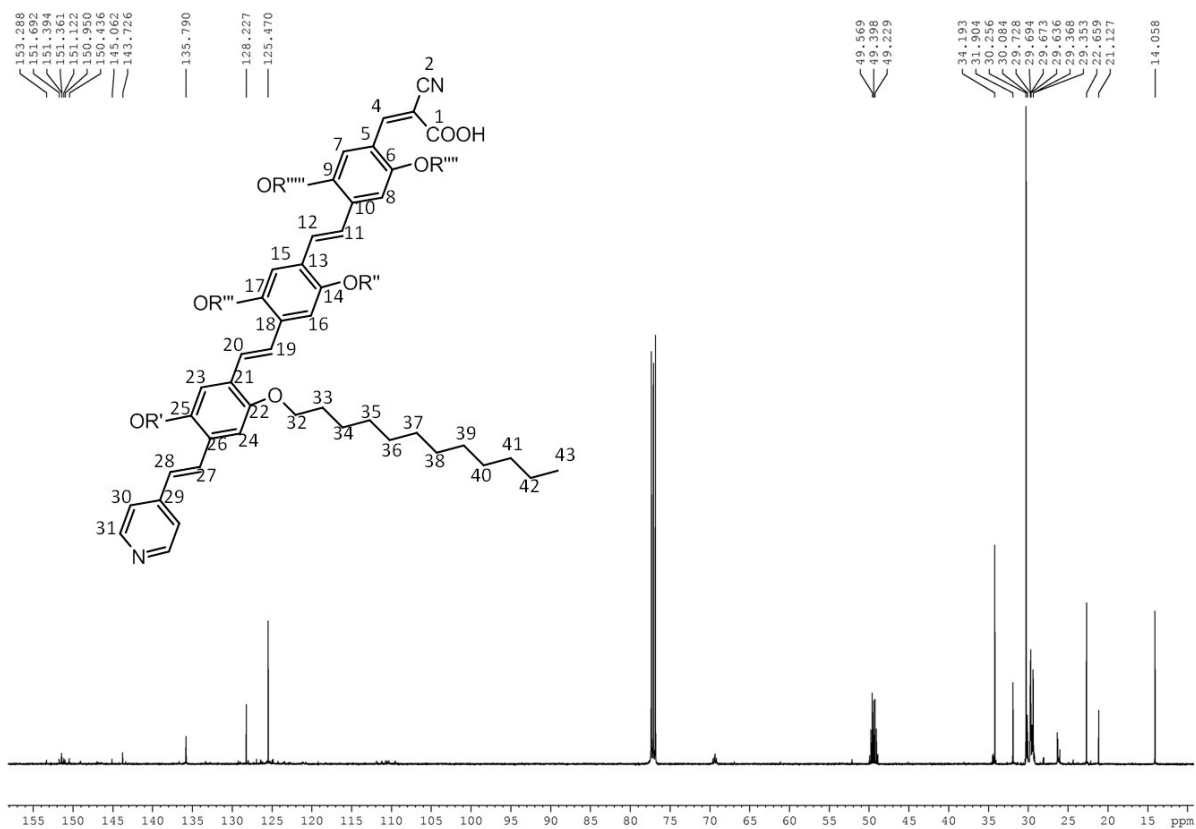


Figure S2a. ¹³C NMR spectrum of LC (500MHz, CDCl₃)

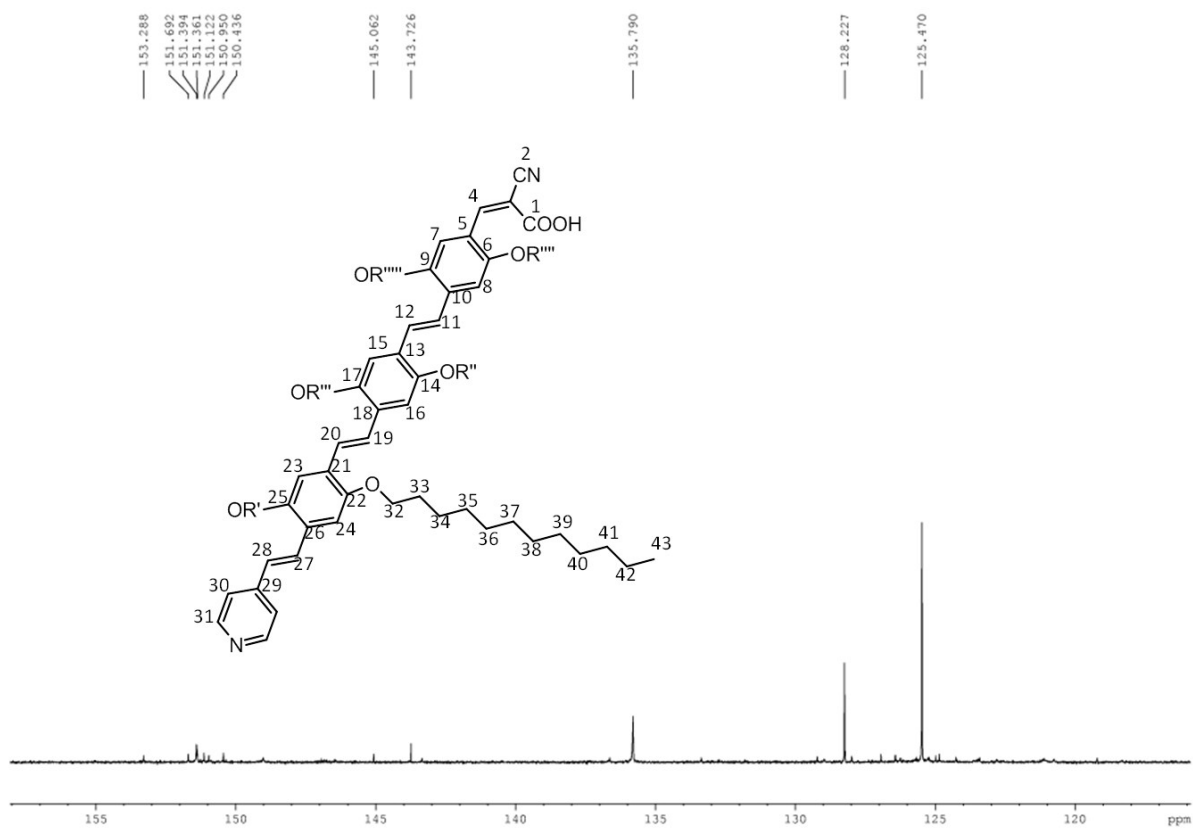


Figure S2b. ¹³C NMR spectrum of LC (500MHz, CDCl₃)

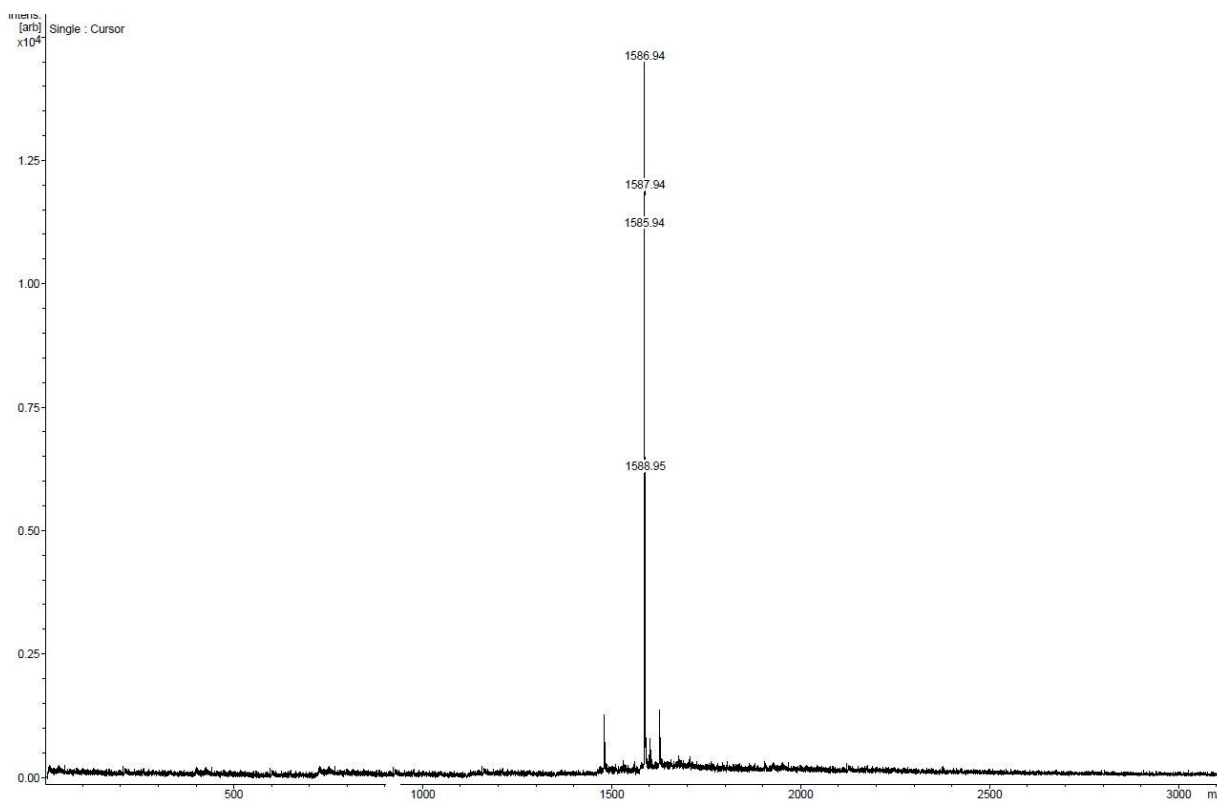


Figure S3. Mass spectrum of LC

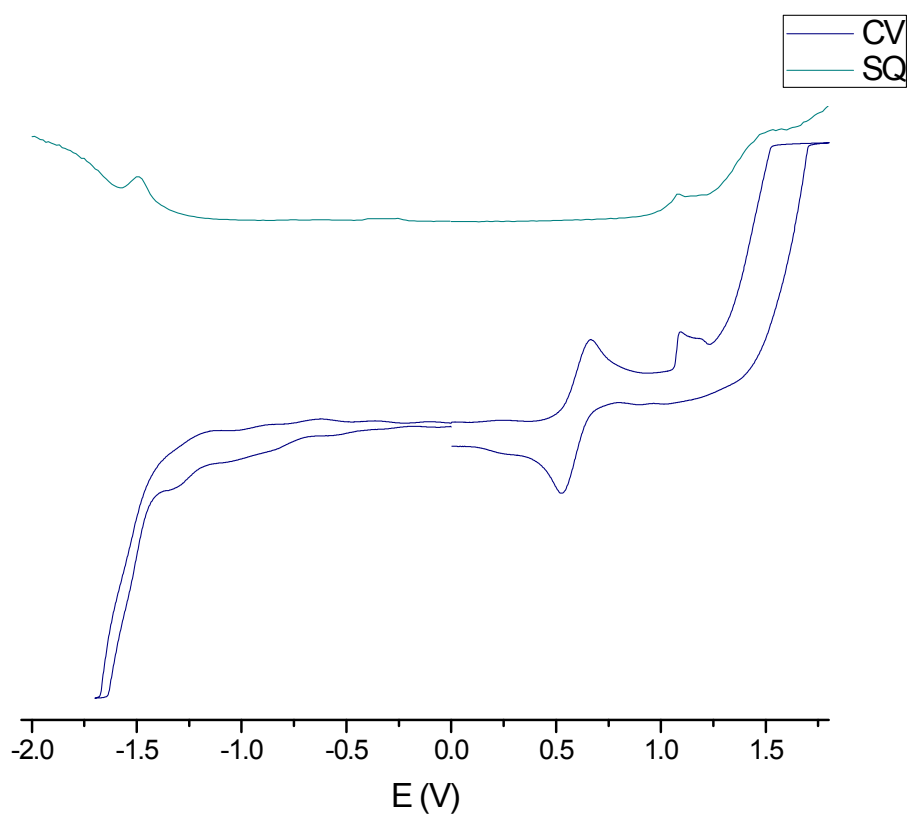


Figure S4. Cyclic and square wave voltammograms of LC

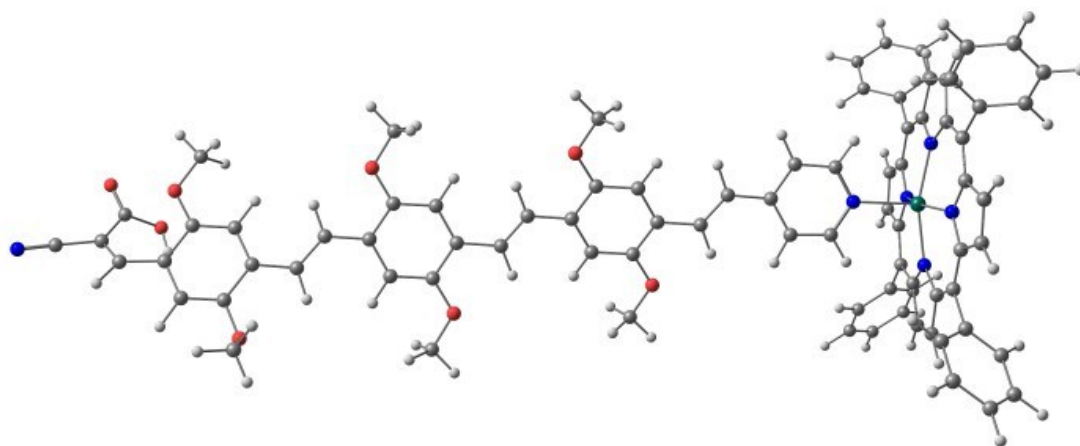


Figure S5: Different view perspective of the gas phase geometry optimized structure of **ZnTPP-LC**.

Table S1. Coordinates of gas phase geometry optimized structure of **ZnTPP-LC** calculated by DFT at the B3LYP / 6-31G(d) level.

E = - 4197.1729362 Hartree / particle.

C	6.393674000	-13.341950000	0.438909000
C	6.125455000	-13.564573000	1.756471000
C	4.818755000	-12.998877000	2.026339000
N	4.318203000	-12.447860000	0.872506000
C	5.245528000	-12.655437000	-0.118809000
C	2.588544000	-10.795889000	-3.612629000
C	3.823532000	-11.346916000	-3.454278000
C	3.968932000	-11.665609000	-2.046883000
N	2.821972000	-11.314297000	-1.382061000
C	1.957068000	-10.787066000	-2.306803000
C	5.106831000	-12.276231000	-1.473188000
C	-1.612772000	-10.088663000	0.774603000
C	-1.354914000	-9.891479000	-0.549056000
C	0.010774000	-10.315494000	-0.784402000
N	0.554342000	-10.762678000	0.394697000

C	-0.414496000	-10.654211000	1.361766000
C	0.654751000	-10.305834000	-2.042728000
C	2.180898000	-12.662146000	4.819282000
C	0.948254000	-12.105420000	4.662433000
C	0.858546000	-11.652946000	3.287532000
N	2.028238000	-11.949842000	2.635803000
C	2.853842000	-12.571611000	3.537615000
C	4.156571000	-13.051826000	3.274026000
C	-0.279004000	-11.040983000	2.714338000
C	-0.125482000	-9.761658000	-3.202215000
C	-1.455382000	-10.809185000	3.615567000
C	4.890973000	-13.703404000	4.407852000
C	6.256973000	-12.572050000	-2.389718000
C	-1.403536000	-9.835411000	4.625653000
C	-2.495637000	-9.617881000	5.467556000
C	-3.661031000	-10.371689000	5.314510000
C	-3.725383000	-11.345153000	4.315342000
C	-2.632287000	-11.561919000	3.474580000
C	-0.415431000	-8.390934000	-3.292723000
C	-1.144660000	-7.882005000	-4.368672000
C	-1.598349000	-8.736322000	-5.375673000
C	-1.317985000	-10.102167000	-5.298053000
C	-0.588908000	-10.609421000	-4.221205000
C	6.011072000	-13.088052000	4.988988000
C	6.696180000	-13.695407000	6.042749000
C	6.272837000	-14.931454000	6.535432000
C	5.160901000	-15.555540000	5.966029000

C	4.477449000	-14.947109000	4.912038000
C	7.045890000	-11.532520000	-2.907358000
C	8.116176000	-11.802827000	-3.761905000
C	8.417106000	-13.119889000	-4.114934000
C	7.639265000	-14.163418000	-3.608910000
C	6.568927000	-13.891431000	-2.755011000
Zn	2.565953000	-11.294090000	0.708749000
C	10.165878000	13.968685000	3.569934000
C	9.667093000	12.599438000	3.454131000
C	8.317460000	12.353446000	3.766548000
C	7.758838000	11.086330000	3.676434000
C	8.547809000	9.976469000	3.289102000
C	9.911334000	10.209638000	3.016812000
C	10.477071000	11.478472000	3.114069000
C	7.925393000	8.663010000	3.172184000
C	8.579281000	7.482627000	3.052601000
C	7.971568000	6.169227000	2.889891000
C	6.602369000	5.990634000	2.615454000
C	6.041058000	4.728721000	2.457104000
C	6.847600000	3.563324000	2.562268000
C	8.218285000	3.743652000	2.824261000
C	8.779150000	5.006070000	2.989070000
C	6.239923000	2.251274000	2.379521000
C	6.841254000	1.053416000	2.578042000
C	6.239926000	-0.256868000	2.361382000
C	4.985773000	-0.431318000	1.748668000
C	4.429809000	-1.691099000	1.548096000

C	5.130906000	-2.856773000	1.952825000
C	6.385165000	-2.683526000	2.568142000
C	6.938427000	-1.424662000	2.771609000
C	4.536347000	-4.166059000	1.720944000
C	5.134543000	-5.369245000	1.881427000
C	4.514772000	-6.669899000	1.642121000
C	3.153264000	-6.855128000	1.327869000
C	2.664529000	-8.133270000	1.102833000
N	3.428088000	-9.239748000	1.170958000
C	4.725839000	-9.080295000	1.478172000
C	5.297546000	-7.837625000	1.719267000
O	11.794350000	11.733777000	2.927514000
O	6.412531000	10.921571000	3.936961000
O	10.105910000	5.216833000	3.249043000
O	4.714937000	4.518732000	2.190148000
O	8.151181000	-1.217860000	3.372251000
O	3.217000000	-1.896365000	0.951416000
C	11.119596000	14.619877000	2.848740000
C	6.099697000	10.705519000	5.314571000
C	12.646711000	10.716977000	2.412830000
C	10.968477000	4.095557000	3.344118000
C	3.862751000	5.642635000	2.051562000
C	2.463418000	-0.771683000	0.529227000
C	8.897519000	-2.342667000	3.803231000
C	11.486517000	15.946338000	3.243642000
N	11.760433000	17.029642000	3.569226000
C	11.855852000	14.100807000	1.635791000

O	13.018867000	14.330280000	1.421775000
O	11.105439000	13.414260000	0.738680000
H	-0.498762000	-9.245590000	4.745266000
H	-2.436088000	-8.856840000	6.241530000
H	-4.511645000	-10.203226000	5.969705000
H	-4.625747000	-11.941639000	4.192246000
H	-2.682242000	-12.325167000	2.702990000
H	3.616752000	-15.437981000	4.466416000
H	6.339693000	-12.123556000	4.611486000
H	4.826652000	-16.520381000	6.338755000
H	7.558780000	-13.200083000	6.481339000
H	6.805661000	-15.404880000	7.355890000
H	5.960808000	-14.704663000	-2.368627000
H	7.861580000	-15.191638000	-3.882672000
H	9.250001000	-13.331349000	-4.780347000
H	8.716425000	-10.983547000	-4.149521000
H	6.815353000	-10.506884000	-2.632173000
H	7.279230000	-13.630531000	-0.108750000
H	6.748099000	-14.075866000	2.476485000
H	2.594164000	-13.101862000	5.715434000
H	0.167714000	-12.016334000	5.404183000
H	-2.533951000	-9.885512000	1.301341000
H	-2.030197000	-9.507344000	-1.300035000
H	2.141490000	-10.436941000	-4.528346000
H	4.565290000	-11.529039000	-4.218514000
H	-0.059166000	-7.722868000	-2.513312000
H	-0.377982000	-11.673394000	-4.159588000

H	-1.671122000	-10.776306000	-6.074192000
H	-2.166322000	-8.341160000	-6.213785000
H	-1.354850000	-6.816727000	-4.421595000
H	1.619531000	-8.297899000	0.856861000
H	5.316031000	-9.990873000	1.526161000
H	2.472508000	-6.013242000	1.262980000
H	6.354764000	-7.772529000	1.960706000
H	6.918633000	-3.563504000	2.903848000
H	4.452598000	0.448113000	1.412098000
H	7.861486000	1.021670000	2.945704000
H	5.201204000	2.281025000	2.067702000
H	3.511903000	-4.134705000	1.364264000
H	6.177291000	-5.415693000	2.190255000
H	8.848366000	2.865918000	2.885661000
H	5.981646000	6.871165000	2.509819000
H	6.839956000	8.682257000	3.201177000
H	9.663834000	7.471478000	3.098197000
H	7.675494000	13.181780000	4.053955000
H	10.532088000	9.374830000	2.717132000
H	9.683359000	14.556753000	4.349372000
H	8.356427000	-2.917918000	4.566228000
H	9.152543000	-3.004710000	2.964830000
H	9.815598000	-1.943686000	4.238664000
H	2.215092000	-0.112820000	1.371683000
H	2.996904000	-0.194251000	-0.237074000
H	1.543095000	-1.173415000	0.101514000
H	10.671702000	3.427382000	4.163144000

H	11.961274000	4.499494000	3.550958000
H	10.997026000	3.526438000	2.405551000
H	4.174140000	6.286426000	1.218267000
H	3.826576000	6.238160000	2.973454000
H	2.869148000	5.240762000	1.844385000
H	12.275251000	10.341002000	1.452453000
H	12.748887000	9.887609000	3.123663000
H	13.613442000	11.199139000	2.265431000
H	6.424128000	11.552623000	5.933098000
H	6.570817000	9.787620000	5.690010000
H	5.013127000	10.609357000	5.373494000
H	10.190770000	13.332202000	1.059154000